



Mountain View
Whisman
School District

Schematic Design for Theuerkauf Elementary School

15 June 2017

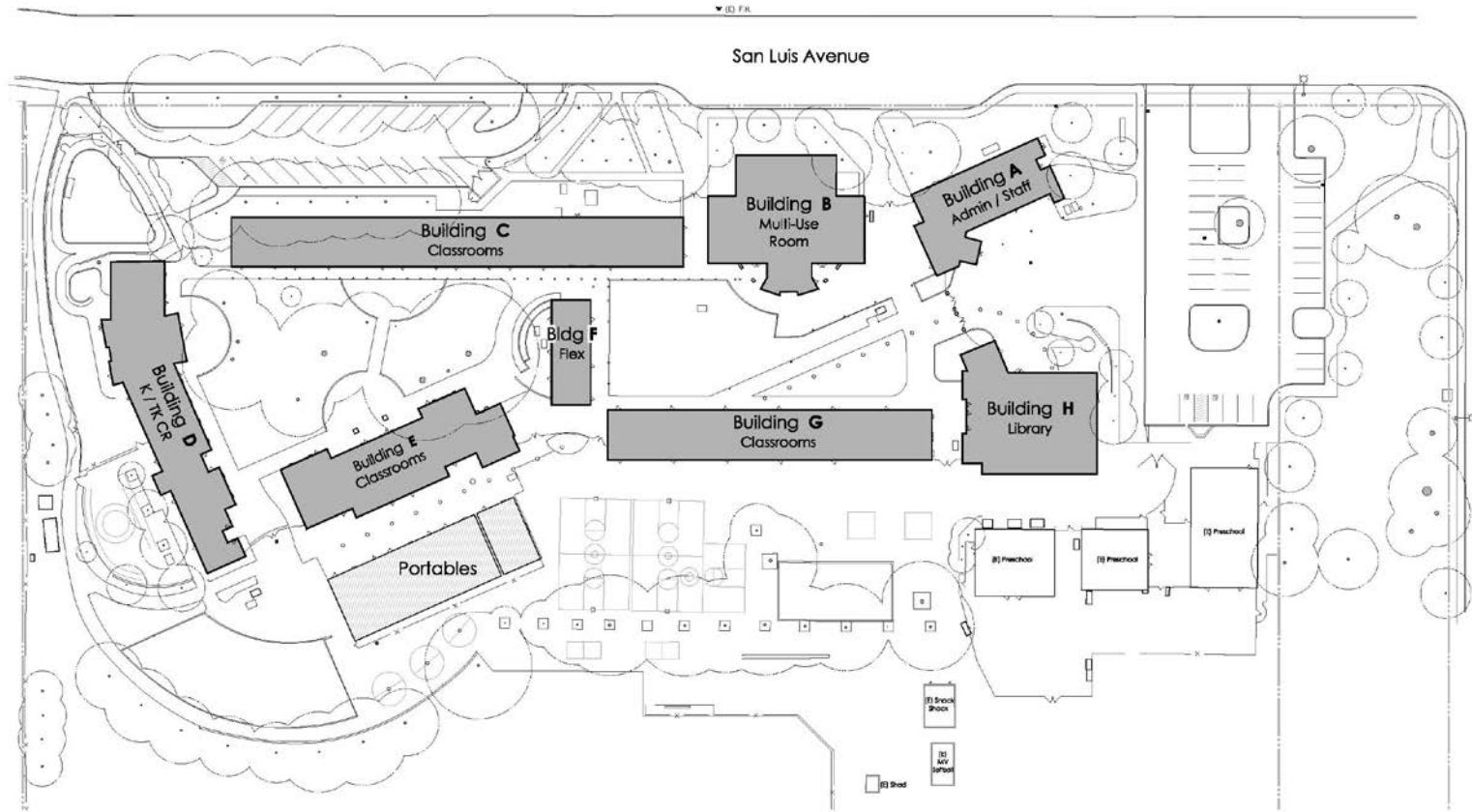


Theuerkauf Elementary School Scope of Work – Summer 2018

- Project:
 - Administration building
 - Library building
 - Staff Room/Work Room
 - Kindergarten building
 - Classroom modernization
 - Multi-Use Room (March 2018-Dec 2018)

Site Plan – The Campus

Site Plan



Theuerkauf Elem School - Site Plan

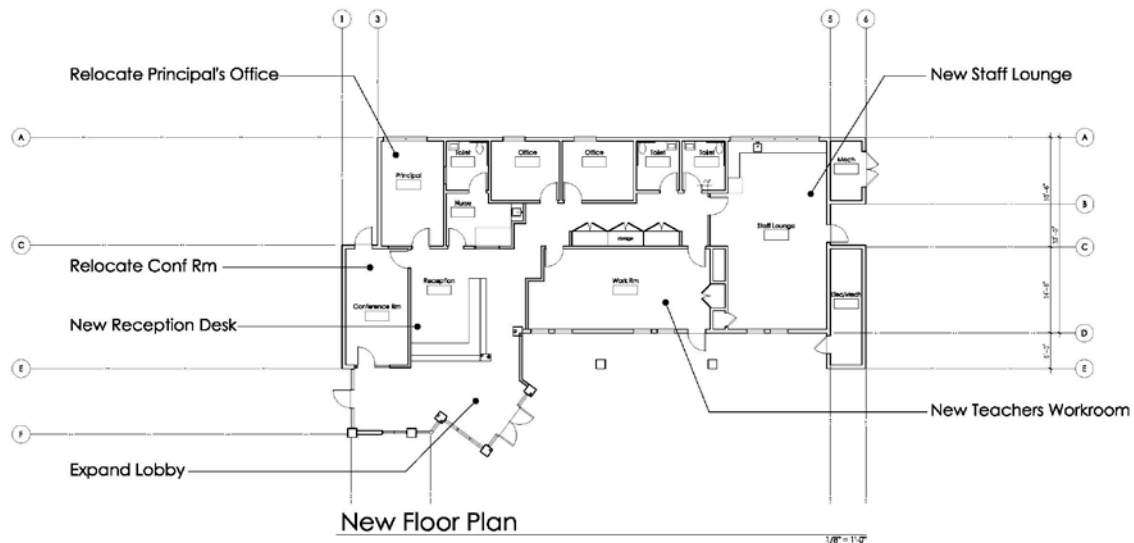
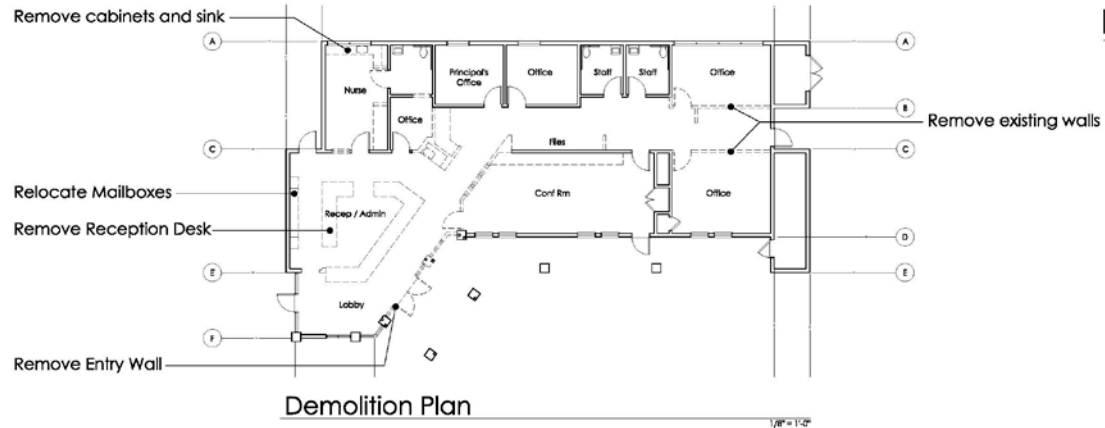
1" = 30'



Theuerkauf Elementary School

Administration Building

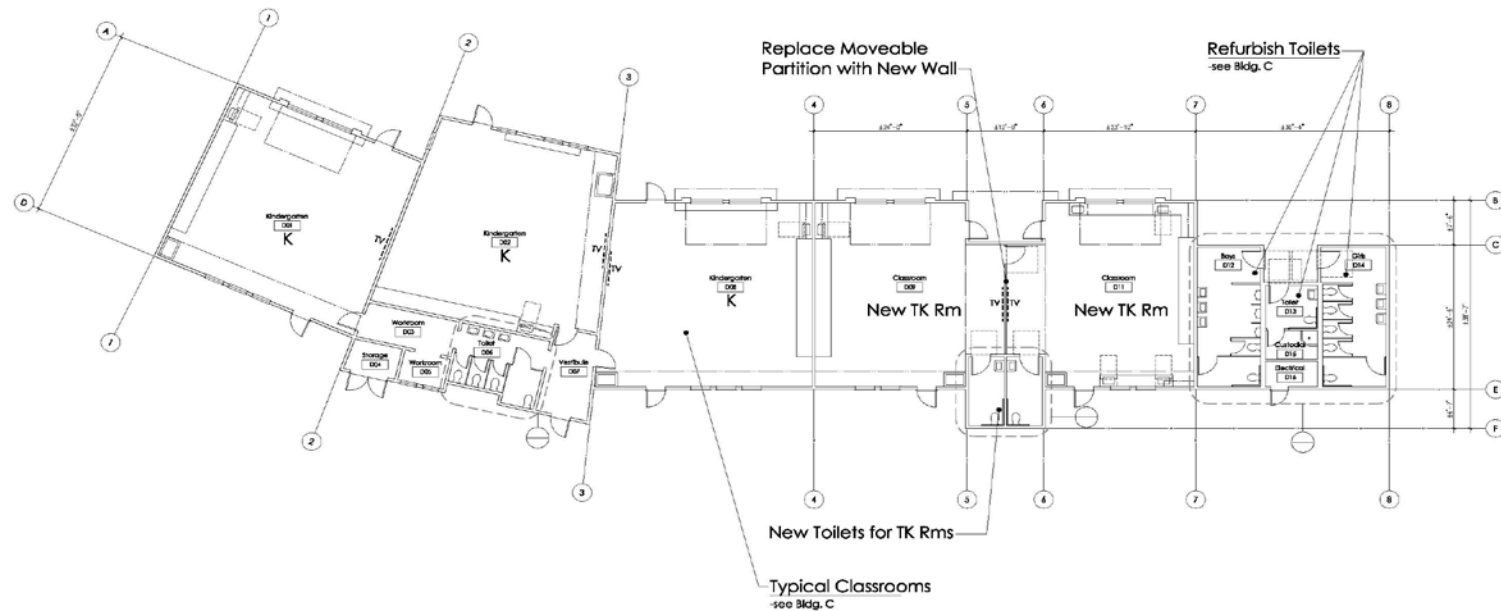
Bldg A: Admin



Theuerkauf Elementary School

Kindergarten Building

Bldg D: K & TK
Classrooms



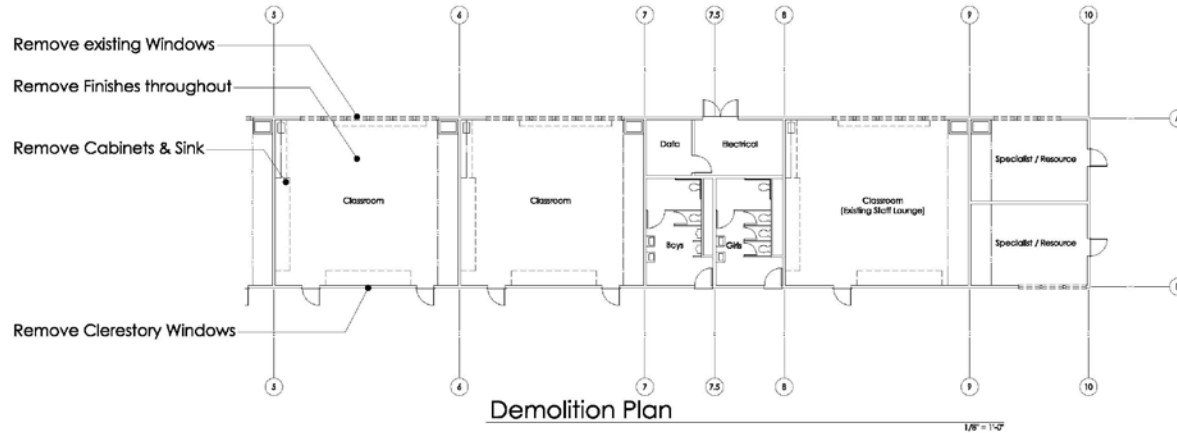
New Floor Plan

1/8" = 1'-0"



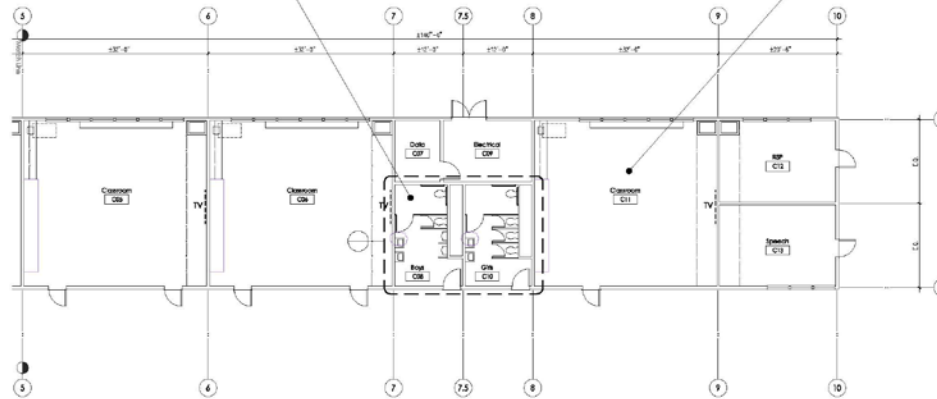
Theuerkauf Elementary School

Classroom Buildings



Bldg C: (G&E similar)
Typ. Classrooms

- Toilet Room Scope:
- New paint
 - Epoxy floor repair
 - New Faucets & Fittings
 - New Ventilation Fans
 - New Fire Alarm



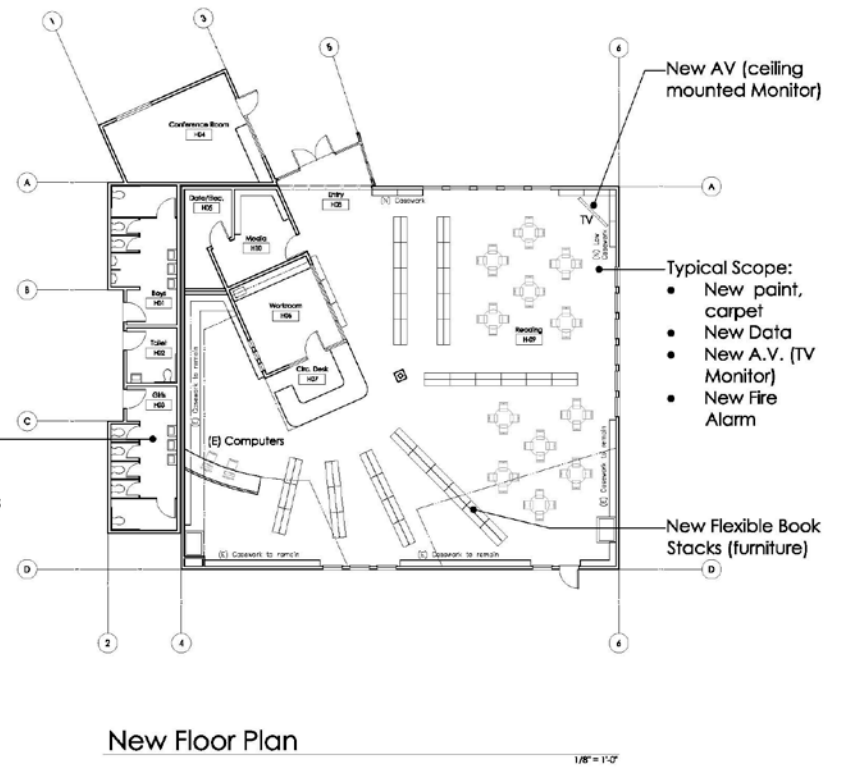
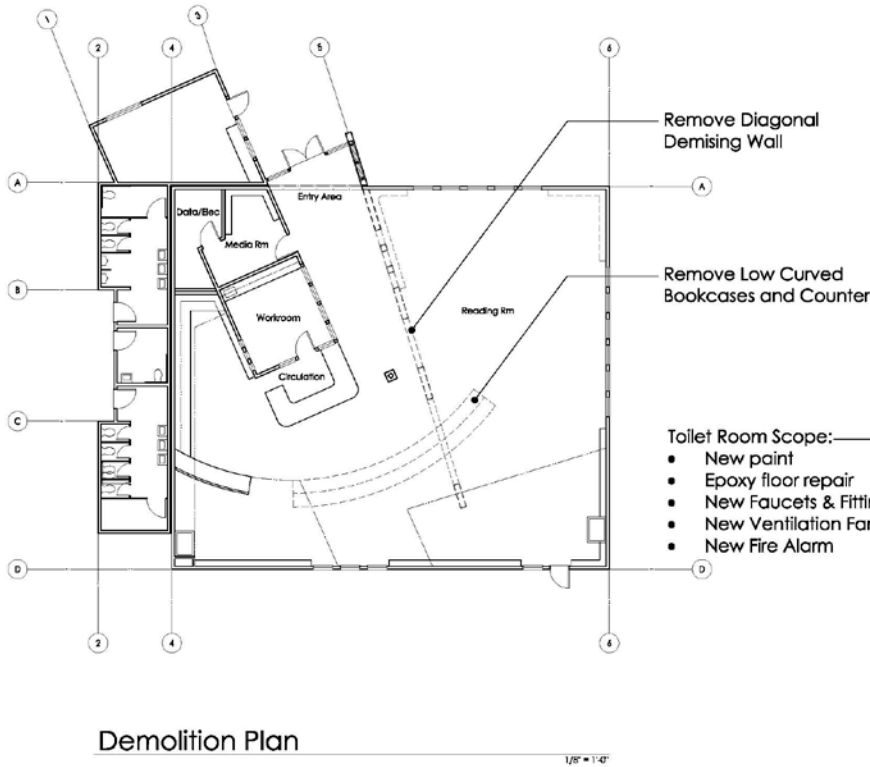
- Typical Classroom Scope:
- New Finishes: paint, carpet, resilient flooring
 - Replace Ceiling Tile
 - New Lighting
 - New A.V. Wall
 - Replace Windows
 - New Cabinets and Sink
 - Refurbish HVAC Units
 - New Fire Alarm
 - Voluntary Seismic Upgrades, (where necessary)



Theuerkauf Elementary School

Library Building

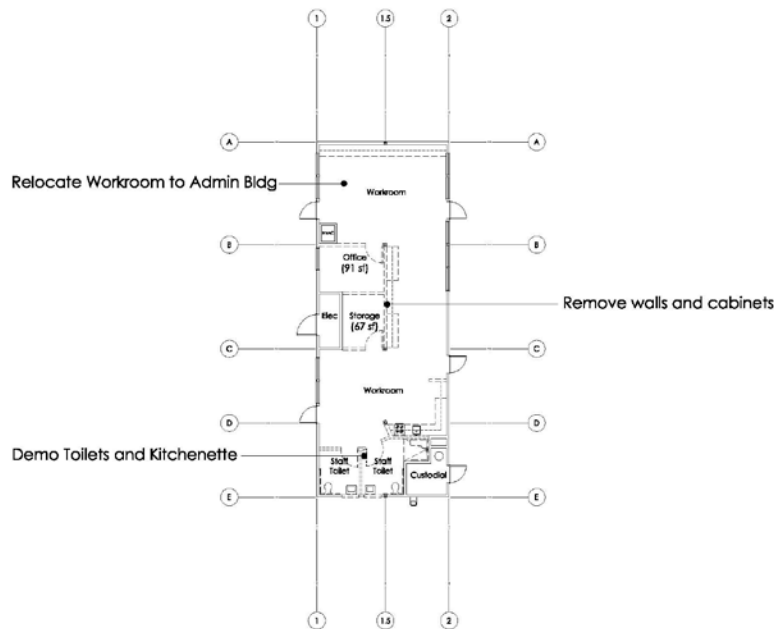
Bldg H: Library



Theuerkauf Elementary School

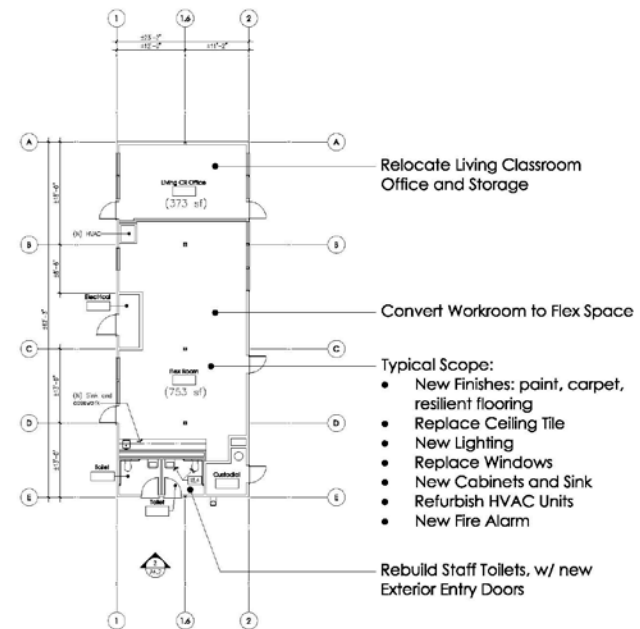
Staff Room/Work Room Building

Bldg F: Flex



Demolition Plan

1/8" = 1'-0"



New Floor Plan

1/8" = 1'-0"

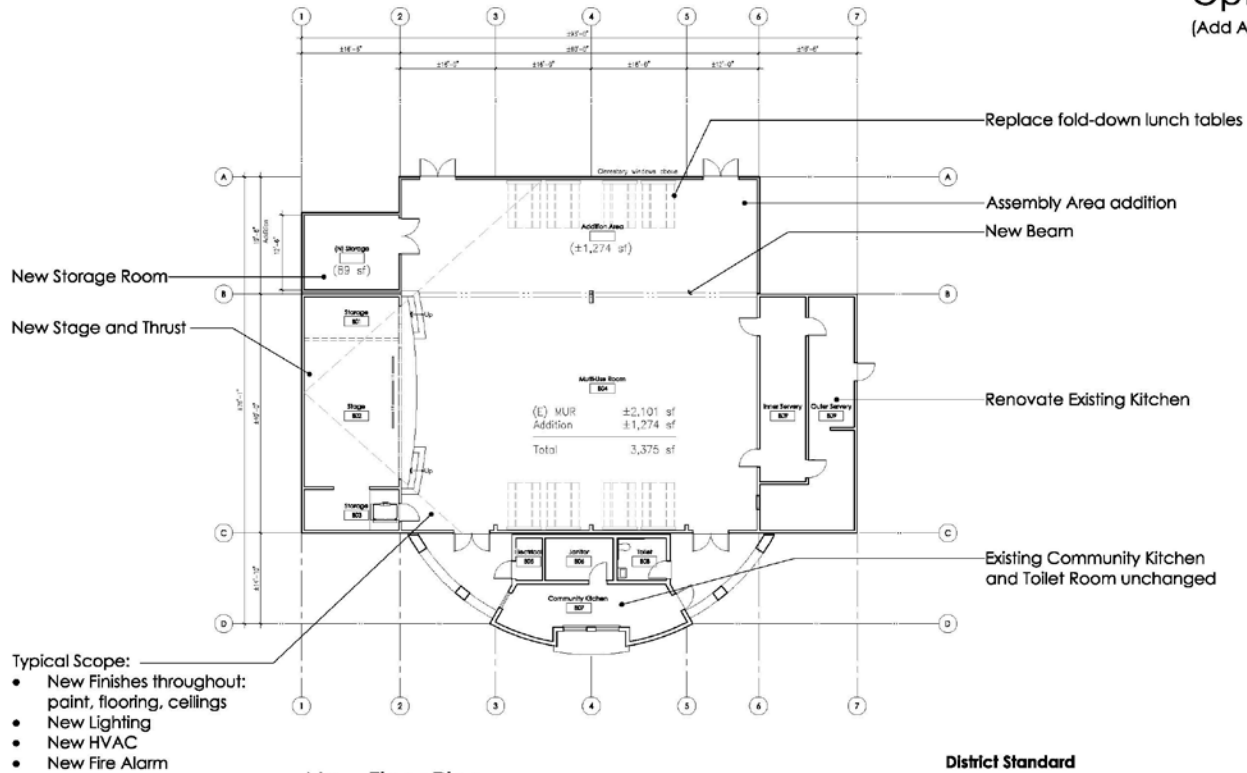
- Typical Scope:
- New Finishes: paint, carpet, resilient flooring
 - Replace Ceiling Tile
 - New Lighting
 - Replace Windows
 - New Cabinets and Sink
 - Refurbish HVAC Units
 - New Fire Alarm



Theuerkauf Elementary School

Multi-Use Room Building – Option 1

Bldg B: MUR
Option 1
(Add Assembly Space)



New Floor Plan

Option 1
1/8" = 1'-0"

District Standard

	Capacity	Sq. Ft. / person	Sq. Ft.
Dining	225	15	3,375 sq. ft. min.
Assembly	450	7	3,150 sq. ft.

Option 1 Assembly

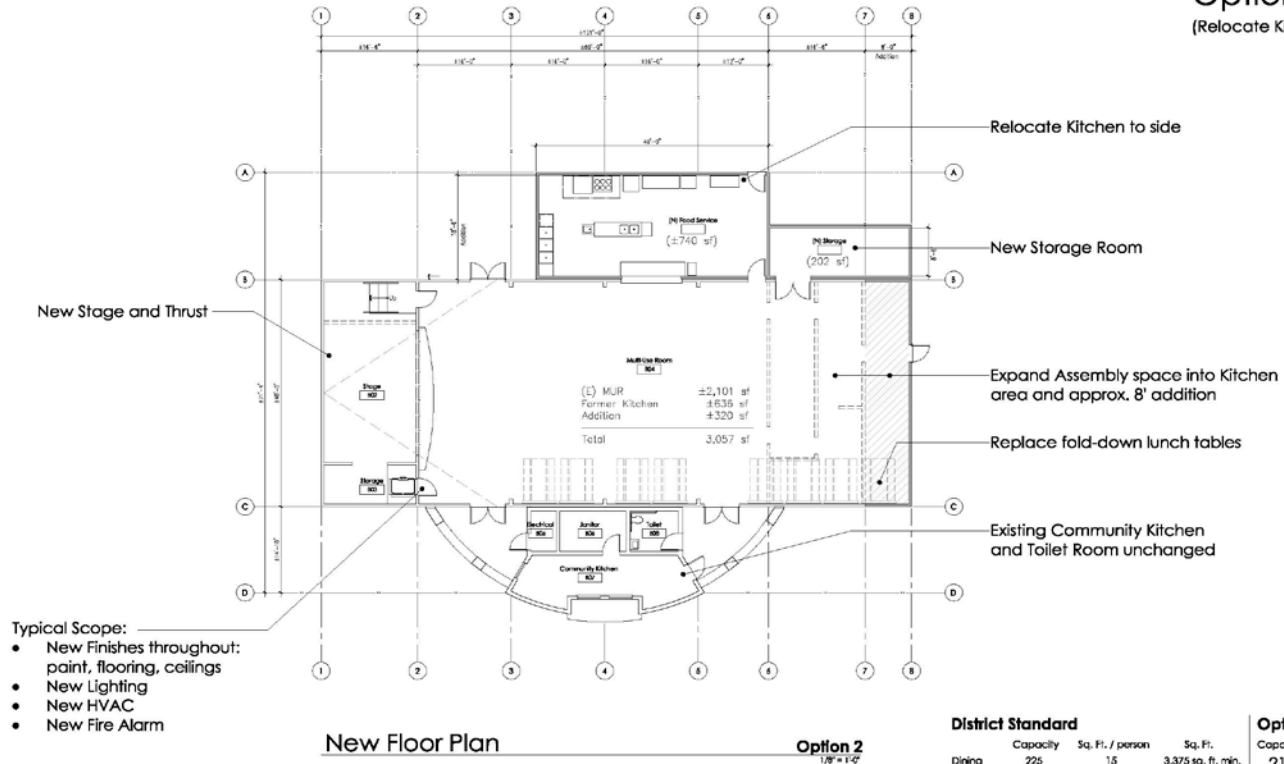
Capacity	3,375 sq. ft.
225	
482	



Theuerkauf Elementary School

Multi-Use Room Building – Option 2

Bldg B: MUR
Option 2
(Relocate Kitchen)



Theuerkauf Elementary School

Project Budget/Schedule

- The current budget for the Project is \$12,550,992, funded by Measure G Bond funds. The proposed schematic design is approximately \$11,700,648, depending on MUR Option #1 or #2 selection.
- The Project is scheduled for Summer 2018, with the MUR March-December 2018.

Questions/Comments/Discussion