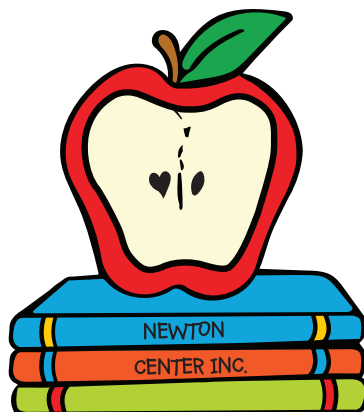


Newton @ Stevenson Elementary School
Fall 2020 Program Details
Full Distance Learning Program
Presented by Tal Tamir on behalf of Newton Center Inc.



Mountain View Whisman School District
Board of Trustees – Regular Meeting
August 6, 2020

Orders and Guidelines Followed

Our program will operate following the Orders and Guidelines of:

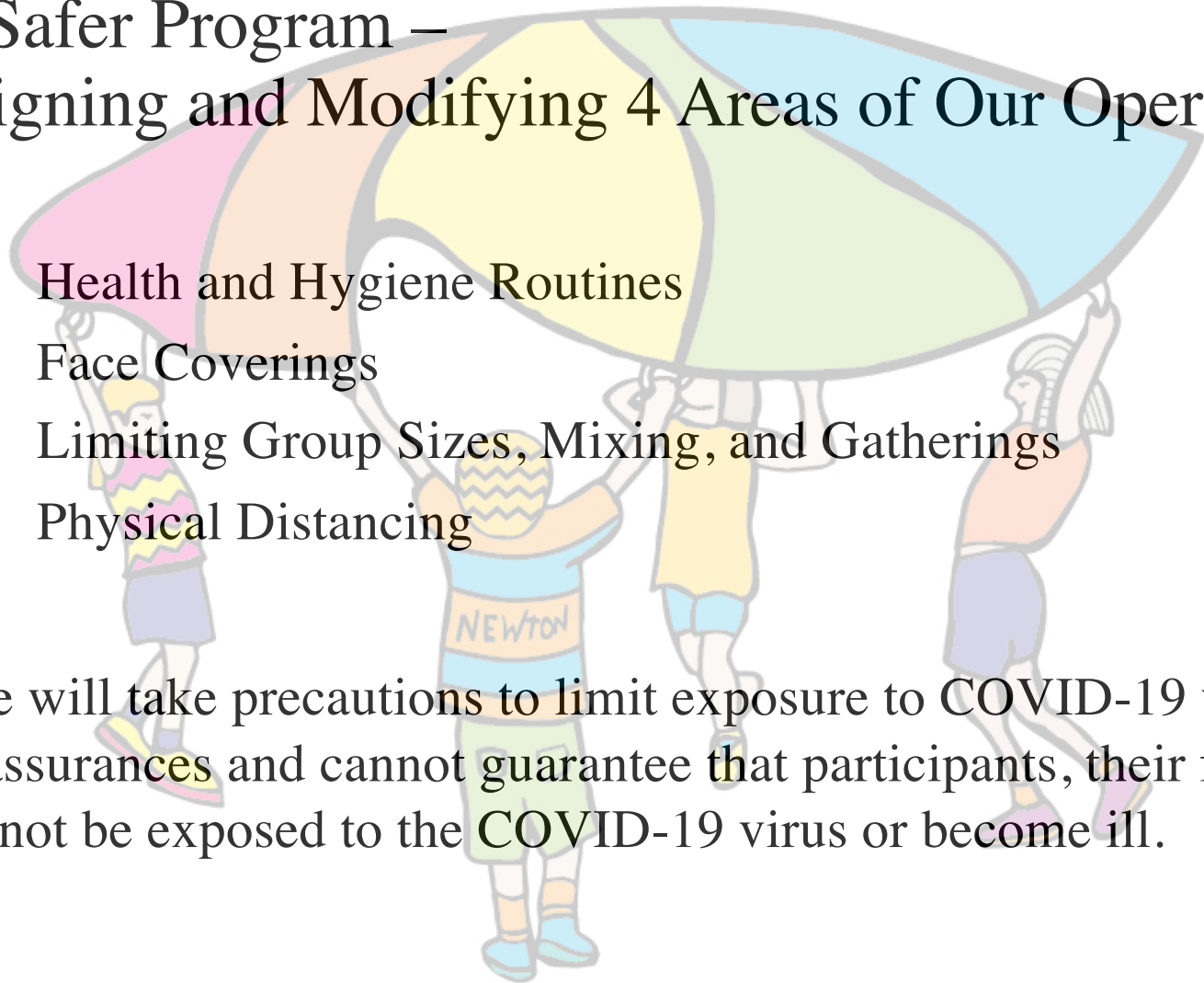
- County of Santa Clara Public Health
 - July 13, 2020: [Mandatory Directive for Programs Serving Children or Youth](#)
- California Department of Social Services, Child Care Licensing Requirements
 - July 17, 2020: [COVID-19 Update Guidance: Childcare Programs and Providers](#)
- CDC Child Care and Camp Guidelines
 - July 23, 2020: [Guidance for Child Care Programs that Remain Open](#)

Should there be conflicting guidelines, we will follow the most restrictive policy.

Offering a Safer Program – Redesigning and Modifying 4 Areas of Our Operations

1. Health and Hygiene Routines
2. Face Coverings
3. Limiting Group Sizes, Mixing, and Gatherings
4. Physical Distancing

Although we will take precautions to limit exposure to COVID-19 we provide no assurances and cannot guarantee that participants, their families, or staff will not be exposed to the COVID-19 virus or become ill.



Offering a Safer Program –

1. Health and Hygiene Routines

- Regular handwashing throughout the day using soap and water or hand sanitizer
 - Our preference will be for handwashing with soap and water
 - Alcohol-based hand sanitizer that contains at least 60 percent ethanol with adult supervision will be used when soap and water are unavailable
- Intensifying cleaning and disinfection efforts of all high-touch areas including regularly sanitizing all toys
 - We will be using an EPA N-rated Disinfectant (i.e. effective against SARS-CoV-2 (COVID-19))
 - The product has no synthetic chemicals and does not require PPE for use
 - Daily cleanings through the District's Facility Team

Offering a Safer Program –

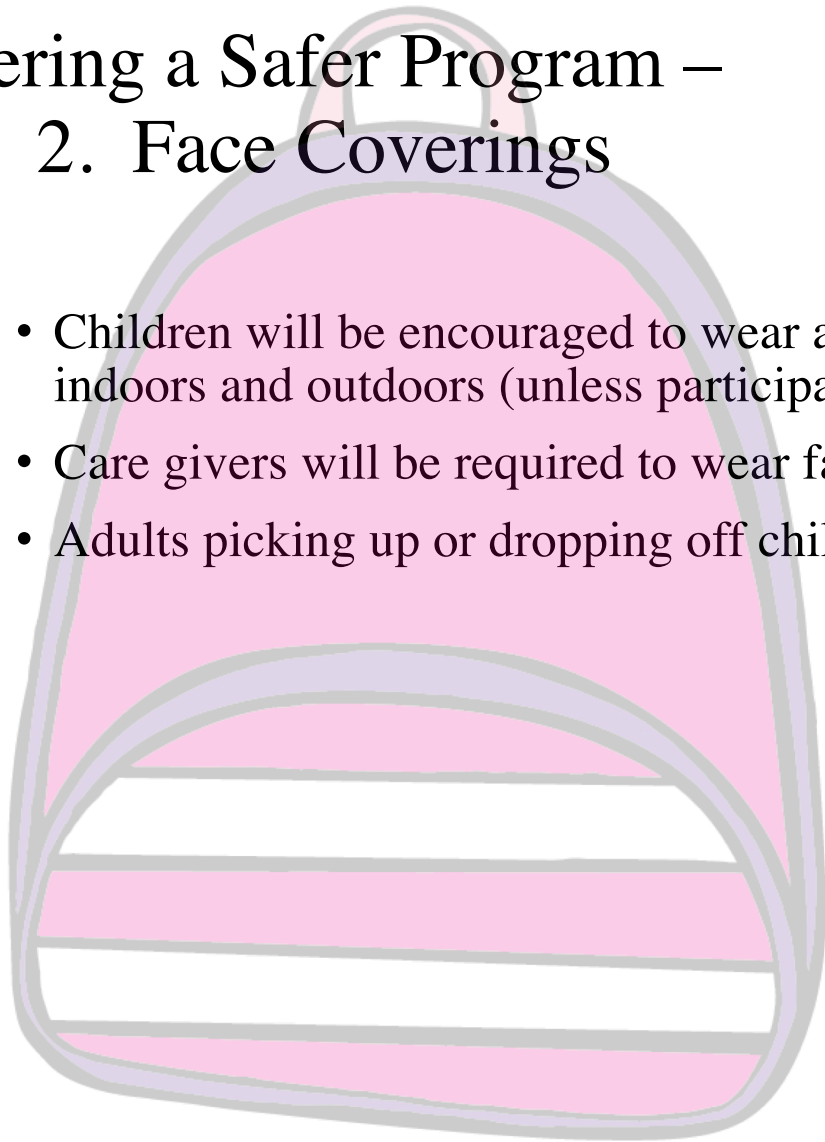
1. Health and Hygiene Routines

- Daily health and safety checks will be required for each child and care giver:
 - Temperature taken before check in
 - Visual screening of COVID-19 symptoms
 - Online Daily Health Questionnaire that inquires whether participants and/or someone in their household has been ill or has been in close contact with someone who has been ill. Participants indicating that they have, will be excluded from the program until further review of the circumstances.
- Children and care givers who develop contagious symptoms during the program day will be excluded from the program
 - They will be immediately separated from the group and sent home
 - They will not be allowed to return to the program until all symptoms of illness subside for at least 24 hours without the use of medicine
 - If symptoms appear that would require a COVID-test per County Health Direction, they will not be allowed to return until doctor's release or negative test result

Offering a Safer Program –

2. Face Coverings

- Children will be encouraged to wear a face covering as much as possible while indoors and outdoors (unless participating in outdoor physical activities)
- Care givers will be required to wear face coverings at all times
- Adults picking up or dropping off children will need to wear face coverings



Offering a Safer Program –

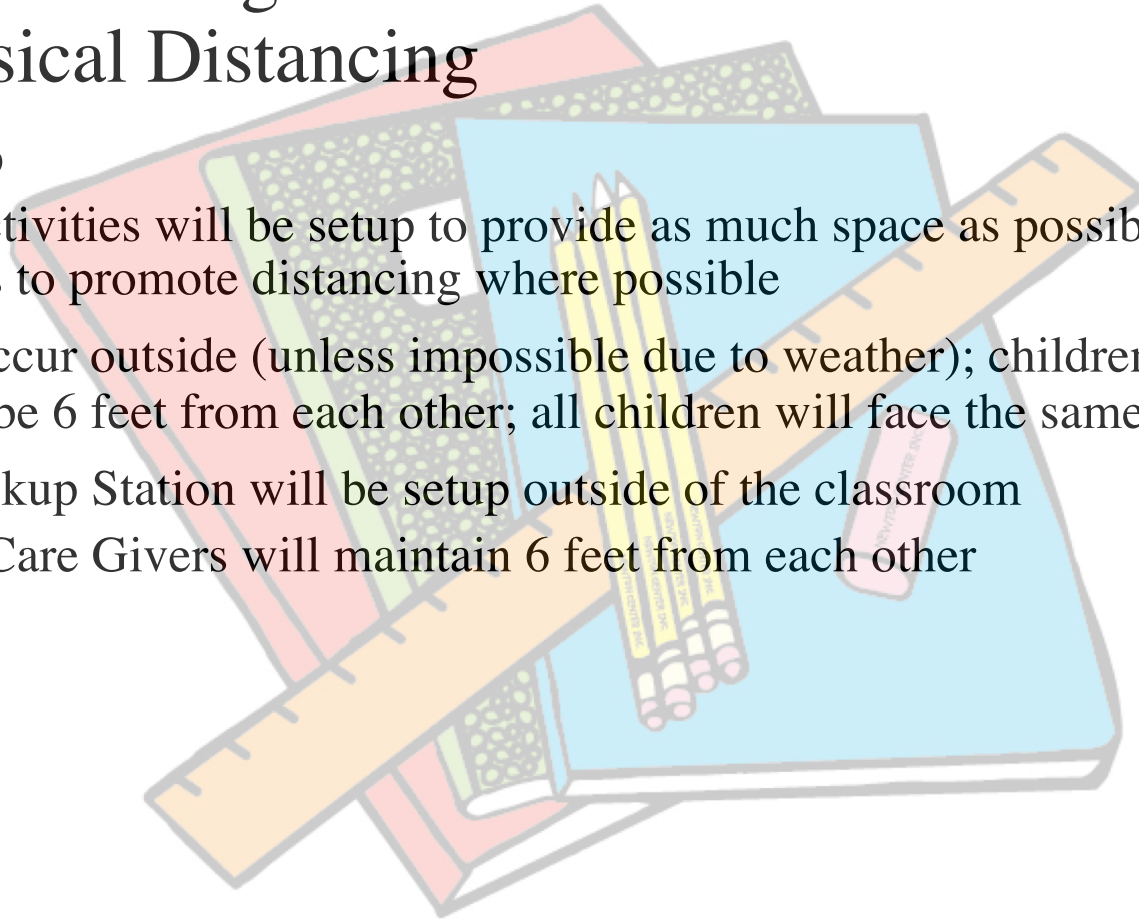
3. Limiting Group Size, Mixing, and Gatherings

- 1 group of 12 children
- Children will not be allowed to participate in any other child care program
- Continued enrollment until time to transition to hybrid learning
 - If a cancellation occurs, we will only add children to the group if our group has been stable for 3 weeks
- Group will not interact with any other groups who might be sharing the campus
- Care givers will not be allowed to work in another child care setting where they interact with a separate stable group
- Parents and visitors will not be allowed into the classroom; no tours allowed

Offering a Safer Program –

4. Physical Distancing

- Classroom Setup
 - Desks and activities will be setup to provide as much space as possible between the children and activities to promote distancing where possible
- All eating will occur outside (unless impossible due to weather); children from separate households will be 6 feet from each other; all children will face the same direction
- Drop-off and Pickup Station will be setup outside of the classroom
 - Parents and Care Givers will maintain 6 feet from each other



Program Details

- Primary focus of each day will be to support distance learning:
 - Daily routine will be set to allow students to participate in online distance learning assignments; complete any assigned work or projects; reading time
 - During this time the program will offer a quiet classroom-like setting
 - Care givers will support, guide, and correct any school assigned work
 - 2 staff members present throughout the day to support the group of 12 children complete distance learning assignments
- Additional time will be organized to offer ample time for outdoor active play as well as a variety of hands on learning activities
- The program will offer activities that promote an inclusive, team-like environment amongst group members

Enrollment Eligibility & Tuition

Registration will open on August 3 at 9 am, online at www.newtoncenter.org

We will begin reviewing applications and offering spots as soon as August 4.

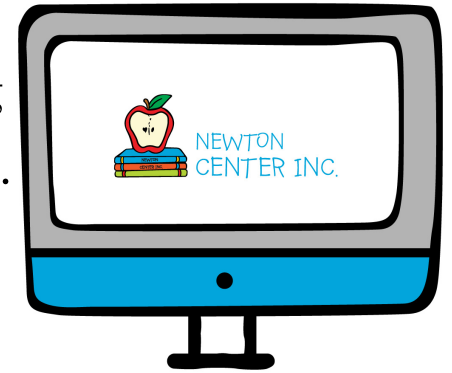
Spots will be offered based on the following priority:

1. MVWSD Families with Essential Critical Infrastructure Workers as designated by the State Public Health Officer
 2. Previously Enrolled Newton @ Stevenson PACT Families
 3. New Stevenson PACT Families
 4. All other MVWSD Students
- Parents will be asked to certify whether they are Essential Critical Infrastructure Workers as designated by the State Public Health Officer

There will be 1 registration option:

- 8 am until 5:30 pm, Monday through Friday
- Tuition will be billed at \$500 per week
- 4cs and County Subsidies are accepted

12 spots total are available





Questions?

If we did not answer your questions tonight, please feel free to email office@newtoncenter.org. We will do our best to respond back within 1 business day.