

SchoolMint <> MVWSD Implementation

MVWSD Board Meeting
January 4, 2018

SchoolMint

An online and mobile enrollment platform for K12 Schools

“We chose SchoolMint to manage our school choice programs. No other system could support our complex lottery needs....”

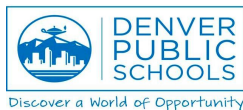
Mandele Davis,
Spring Branch ISD



Districts

“We are able to offer parents greater transparency and enable fair and equal access to the schools of their choice. SchoolMint ... has improved parent communications which will be important as we expand the school choice program with our charter schools in the future.”

Kevin Alin, Cleveland Metro



SchoolMint's end-to-end platform

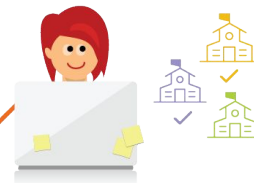
Retain

- Year-Round Events
- General Forms, Surveys & Communications
- Payments



Outreach

- Enrollment Website
- School Finder
- Interest Tracker
- Outreach Events & RSVPs

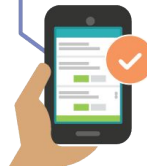


Apply

- Choice, Charter, Magnet & District Applications
- Transfer Requests
- Lottery & Assignments
- Waitlist Management

Register

- Registration Packets, Forms & Payments
- Re-Enrollment
- SIS Integration



Custom Landing Page

The screenshot shows the 'Online Enrollment System' landing page. At the top left is the district logo, and at the top right is a 'Welcome!' message. A dark navigation bar contains 'Welcome' and 'Bienvenido'. A yellow banner contains a login instruction and a note for current students. The main content area is split: the left side has a thank-you message and enrollment dates, while the right side features a 'Log In' form with fields for email/mobile number and password, and links for 'Forgot Username?' and 'Forgot Password?'. A blue 'Ready, Set, Go!' button is below the form. A yellow footer for the form says 'If you don't have an account, click here to [Create an Account](#)'. Below this is a blue banner with a video player showing two children and text describing the district's awards and providing links for more information and school location.

Mountain View Whisman School District

Online Enrollment System

Welcome!

Welcome Bienvenido

Please login to start your application by entering your username and password below.

NOTE: If your child is a current MVWSD student in TK - 7th grade, an account will be created for you. If you have not received your login, please contact MVWSD Support at 650-526-3252 and press 3.

Thank you for choosing Mountain View Whisman School District!

Open Enrollment 2018-19 will be from January 5, 2018 - February 2, 2018.

Log In

Email Address or Mobile Number

Forgot Username?

Password

Forgot Password?

Ready, Set, Go!

If you don't have an account, click here to [Create an Account](#)

Mountain View Whisman School District

Mountain View Whisman School District is an award-winning district with a National Blue Ribbon School, three California Distinguished Schools and two California Gold Ribbon Schools.

To learn more about each of our schools and programs, [click here](#).

To locate your neighborhood school, please [click here](#).

Timeline: Open Enrollment

Open Enrollment: January 5th - February 2nd,
2018


Lottery: February 16, 2018


Open Enrollment Process


(New to District and Transitional - up to 2 schools)

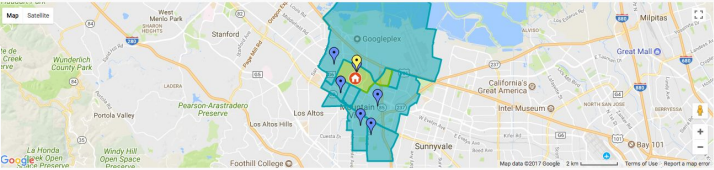
Please click on your student's name

Mark Sotheby

 April 11th 2004

 1084 Wentworth St
Mountain View, CA 94043

 Add another student



Select up to 2 schools to apply to:
school(s) selected: Select up to 1 more.

Filter by School Name

i Your neighborhood school has been assigned based on the address you provided. If you're not currently attending your neighborhood school, it is pre-selected with a checkmark and reads, "This is your neighborhood school." If you are unsure which school your child is zoned for or have questions, please contact the district at 650-528-3500.

Select	School	Grades	Distance	Location	Website
<input type="radio"/>	Stevenson Elementary School	K - 5	0.3 mi	See Map	Website
<input checked="" type="radio"/>	Theckerkauf Elementary School - This is your neighborhood district school	K - 5	0.4 mi	See Map	Website
<input type="radio"/>	Mariano Castro Elementary School	K - 5	0.6 mi	See Map	Website
<input type="radio"/>	Gabriela Mistral Elementary School	K - 5	0.6 mi	See Map	Website
<input type="radio"/>	Monta Loma Elementary School	K - 5	1 mi	See Map	Website
<input type="radio"/>	Edith Landels Elementary School	K - 5	1.1 mi	See Map	Website
<input type="radio"/>	Benjamin Bubb Elementary School	K - 5	1.4 mi	See Map	Website
<input type="radio"/>	Frank L. Huff Elementary School	K - 5	1.8 mi	See Map	Website

Back Cancel Next

Current School

Is Mark Sotheby currently enrolled at a school in Mountain View Whisman School District (not including Preschool)?

Yes No

What school is Mark Sotheby currently enrolled in? (REQUIRED)

Other

Enter "Other" if you don't see your school, or "Not Applicable"

Current Grade


Grade Applying to

Fourth Grade

Fifth Grade

Open Enrollment Process

(Transfer - one choice)



Select up to 2 schools to apply to:

1 school(s) selected. Select up to 1 more.

Filter by School Name

i Your neighborhood school has been assigned based on the address you provided. If you're not currently attending your neighborhood school, it is pre-selected with a checkmark and reads, "This is your neighborhood school.* If you are unsure which school your child is zoned for or have questions, please contact the district at 650-526-3500.

Select	School	Grades	Distance	Location	Website
<input type="radio"/>	Isaac Newton Graham Middle School	6 - 8	2.3 mi	See Map	Website
<input checked="" type="radio"/>	Crittenden Middle School <small>⚠️ - This is your neighborhood district school</small>	6 - 8	0.9 mi	See Map	Website

[Back](#) [Cancel](#) [Next](#)

Timeline: Returning Student Process

- Intent to Return: January 5th, 2018
- Re-enrollment Forms: August 2018

Intent to Return

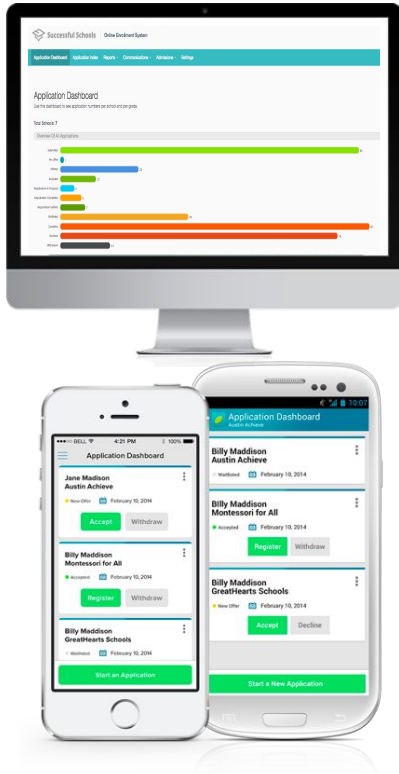
Student Dashboard

Important and Active

[+ Add/Edit New Student Application](#)

NAME	SCHOOL	GRADE	SCHOOL YEAR	LAST UPDATED	TYPE	STATUS	ACTIONS
John Doe	Crittenden Middle School	Seventh Grade	2018-2019	12/15/2017	Returning Student	<input type="radio"/> Undecided	Returning Not Returning

Ease of Use and Transparency



¡Gracias por elegir el distrito escolar Mountain View Whisman!

Las inscripciones para el periodo 2018-19 estarán abiertas del 5 de enero de 2018 al 2 de febrero de 2018.



El distrito escolar Mountain View Whisman es un distrito premiado con un National Blue Ribbon School, tres California Distinguished School y dos California Gold Ribbon School.

Para obtener más información sobre cada una de nuestras escuelas y programas, [haga clic aquí](#).

Para localizar la escuela más cercana a usted, [haga clic aquí](#).

Place of Birth

Student Country of birth *

Select Country

Student City of birth *

Age Verification *

Please upload one of the following documents: Birth Certificate (certification of vital record), Valid passport or Baptismal record.

Upload

Post-Launch Support and Training

Services & Support



Set-Up & Training

- Online training delivered through **Udemy**
- **Embedded feature updates and help** within admin interface



Support

- **Admin Support** - phone & email
- **Parent Support** - phone & email (bilingual)
- Dedicated school **Success Specialist**
- **Help Center** - 24/7 online FAQ & content repository



Community

- Online **community**
- Regional **user groups**
- **Monthly Webinars**

Thank You

