



Mountain View  
Whisman  
School District

# Theuerkauf Elementary School Restroom Modernization Schematic Design Presentation

August 21, 2025

# Guiding Principles

# Strategic Plan 2027

## Goal Area 5

- Equitable distribution of resources that support student success.
- Goal 5a: Ensure facilities and resources equitably serve all students.

# Conceptual Plan Goals

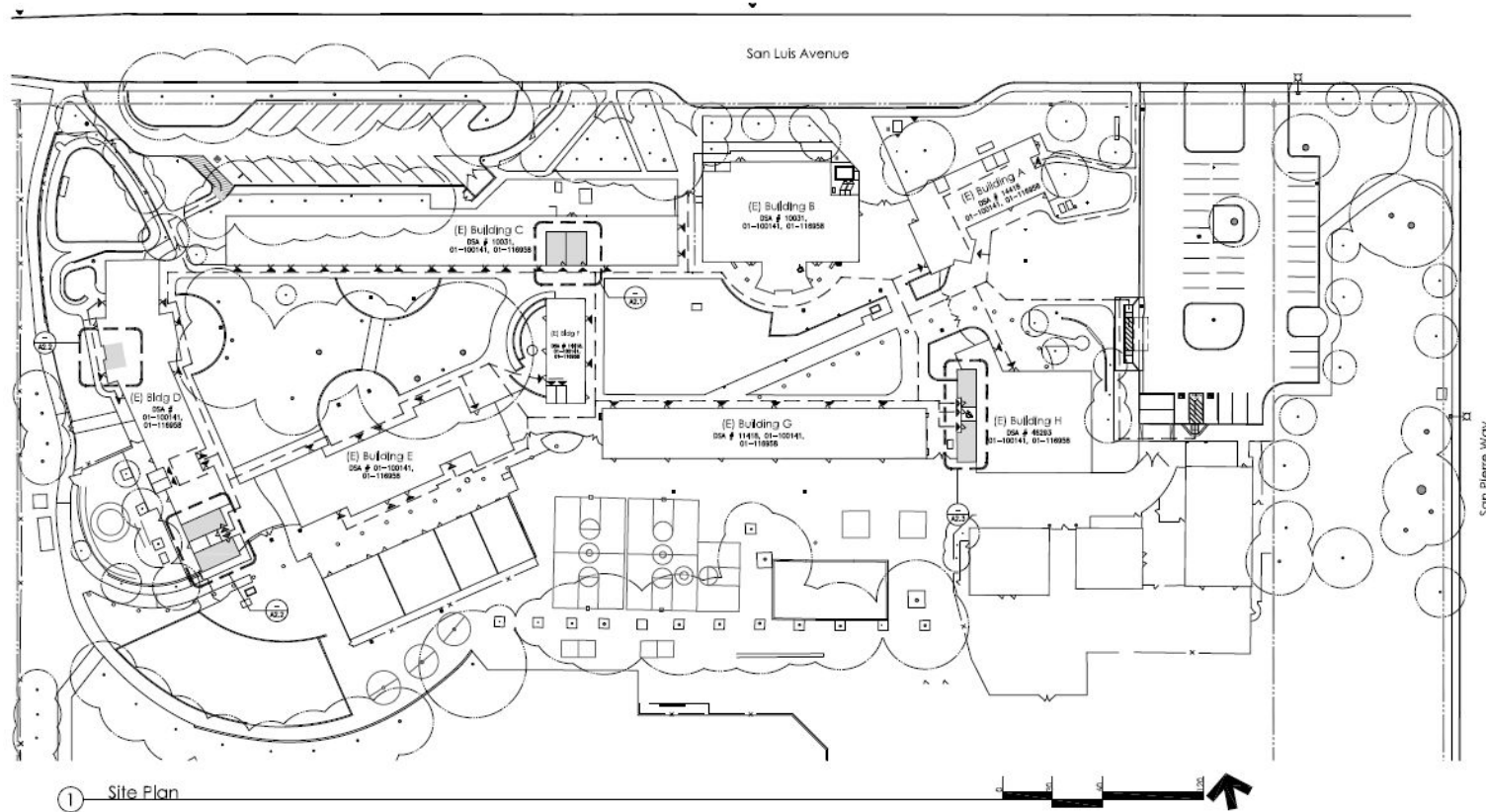
- Replace existing finishes and fixtures which are past their useful life.
- Bring restroom standard in line with other sites modernized under Measures G and T.



Mountain View  
Whisman  
School District

# Schematic Design Drawings

# Site Plan



1 Site Plan

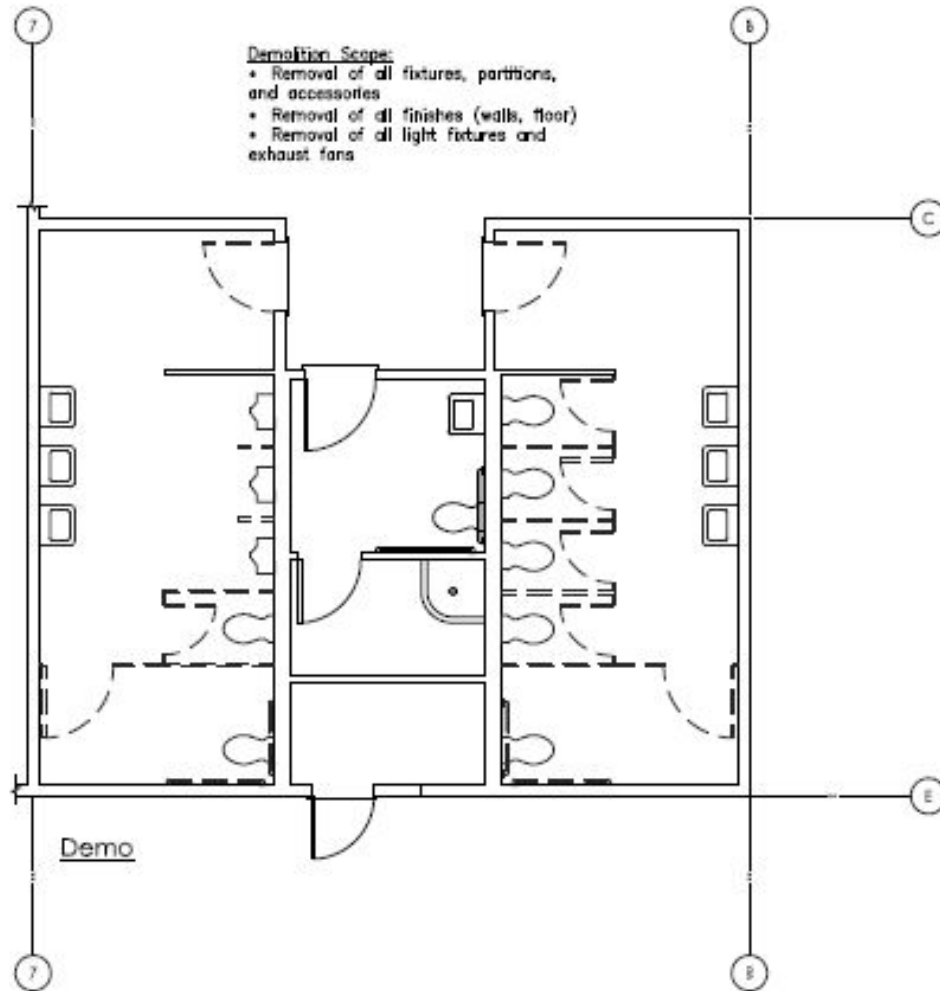
**DTA**  
**Dreling Terones Architecture Inc.**  
 Architecture  
 Environmental  
 Engineering  
 Landscape Architecture  
 Planning  
 4800 S. Bascom Avenue, Suite 1000  
 San Jose, CA 95128  
 408.435.1000  
 3111 Center Street, Suite 200  
 Mountain View, California  
 650.961.1888

State Architectural at  
**Theuerkauf Elementary School**  
 1825 San Luis Ave  
 Mountain View, CA

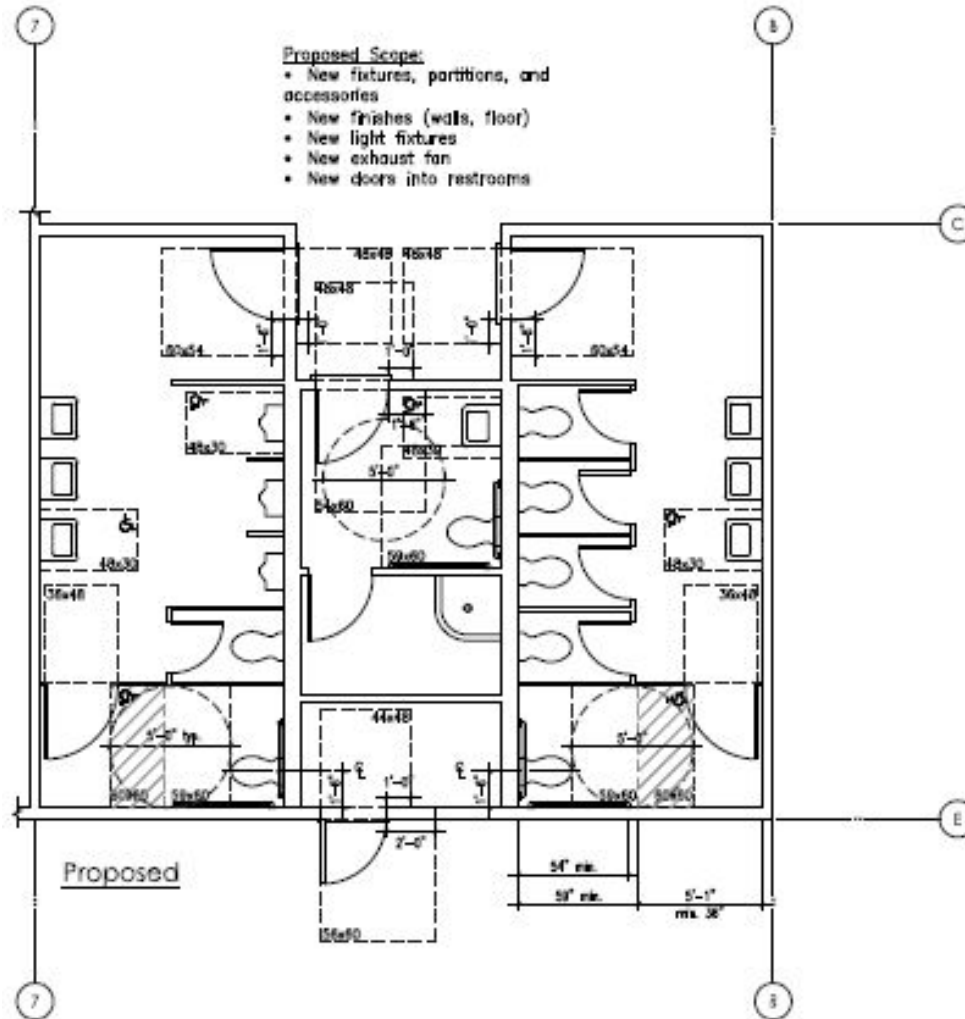
Site Plan  
 A1.1

2415

# Typical Demolition Plan



# Proposed Plan (Typical)







Mountain View  
Whisman  
School District

# Budget

# Schematic Design Budget

#	Description	Quantity	Unit	Unit \$	Total
<b>Direct Costs</b>					
	Total Direct Cost				\$ 571,241
	General Conditions	2 mo		\$ 45,000.00	\$ 90,000
	Contractors Fee	8 %			\$ 52,899
	Bonds & Insurance	2.2 %			\$ 15,711
<b>Anticipated bid amount</b>					<b>\$ 729,852</b>

## Project Cost

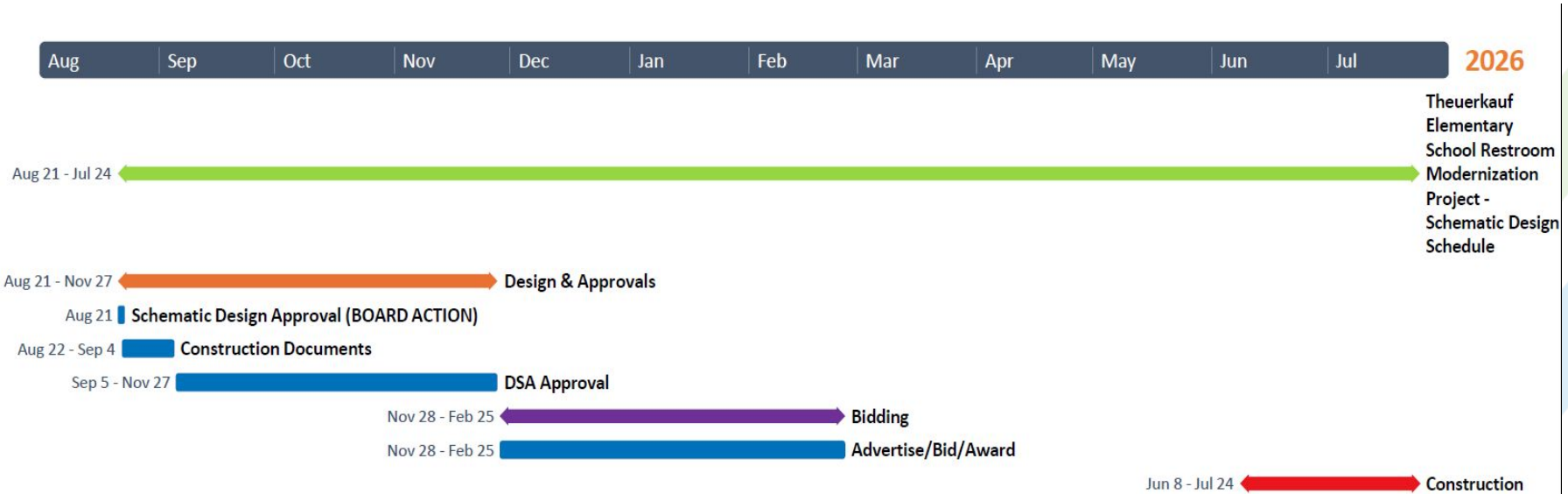
Description	Quantity	Unit	Unit Cost	Subtotal
Construction Budget	1	ls		\$ 729,852
Design Contingency	10	%		\$ 72,985
Construction Contingency	10	%		\$ 72,985
Architect Fees	1	ls		\$ 63,605
Architect Contingency	1	ls		\$ 10,218
Architect Reimbursable Expenses	1	ls		\$ 1,590
Blueprinting	1	ls	\$ 1,500.00	\$ 1,500
PM/CM Fees	4.5	%		\$ 36,128
DSA Inspector	2	mos.	\$ 8,500.00	\$ 17,000
Bid Advertisements	1	ls		\$ 2,500
DSA Fees	1.2	%	\$ 875,821.90	\$ 10,510
CEQA	1	ls	\$ 1,500.00	\$ 1,500
Legal	1	ls	\$ 1,000.00	\$ 1,000
Moving Expenses	0	ls	\$ -	\$ -
FF&E	0	ls	\$ -	\$ -
Misc. Expenses	1	ls	\$ 5,000.00	\$ 5,000
<b>Grand Total</b>				<b>\$ 1,026,372</b>



Mountain View  
Whisman  
School District

# Schedule

# Schematic Design Schedule





Mountain View  
Whisman  
School District

# Questions