



Mountain View  
Whisman  
School District

# Outdoor Learning

November 21, 2024

Mountain View Whisman School District





Mountain View  
Whisman  
School District

# Board Resolution

# Board Resolution 05-012623, Climate Change and Green Schoolyards

- The resolution, passed by the Board on January 26, 2023, has guided the work of the District and Sustainability Advisory Council.
- Greening is a part of the plan created by the Sustainability Advisory Council
- Greening is understood in a broader sense to include playgrounds, trees, and outdoor work areas.



Mountain View  
Whisman  
School District

# Strategic Plan 2027

# Strategic Plan 2027

## Goal Area 5

- Equitable distribution of resources that support student success.
- Goal 5a: Ensure facilities and resources equitably serve all students.



Mountain View  
Whisman  
School District

# Process for Greening

# Overview of Process

- The proposed process was designed to give the public and Board multiple touch points before design approval.
- Originally schematic design was planned for June of 2024 but the district paused and elongated the feedback process due to a portion of the community expressing concern.
- There is also a portion of the community that would like action sooner

# Overview of Process

- We will try to fulfill as many needs as possible but not everyone will be happy.
- The goal is to get the best design possible within our constraints (budget, space etc.)

# Original Timeline

**September 19, 2024**-Board presentation **DONE**

**October- early November 2024**-Community meetings to review scores and suggest prioritization based on limited budget **DONE** (staff, students, community, Canopy, Living Classroom)

**November 21, 2024** Board Presentation on initial plans

**December-January 2024-2025**-Community meetings for feedback on designs

**January 2025**- Carducci to updated designs based on feedback

**February 13, 2025**- Board presentation on plans and feedback received.

**March 2025**- Community meetings to review designs

**April 24, 2025** - Board approval of schematic design plans

# Proposed Adjusted Timeline

**September 19, 2024**-Board presentation **DONE**

**October- early November 2024**-Community meetings to review scores and suggest prioritization based on limited budget  
**DONE** (staff, students, community, Canopy, Living Classroom)

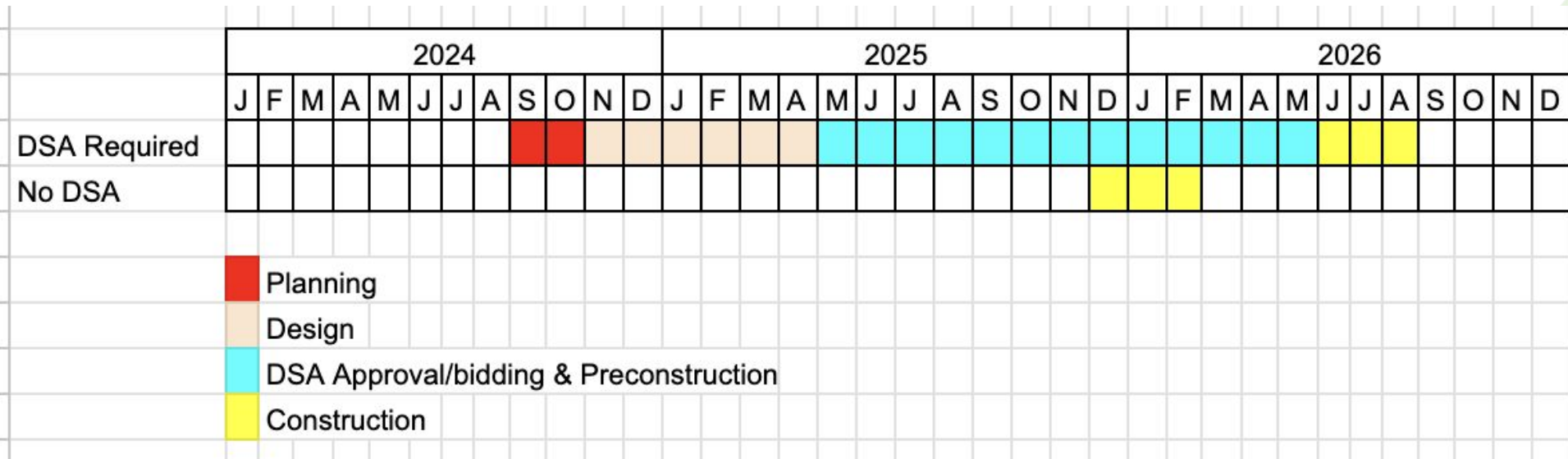
**November 21, 2024** Board Presentation on initial plans

**December-January 2024-2025**-Community meetings for feedback on designs

**February 2025**- Carducci to updated designs based on feedback

**March 6, 2025**- Board approval of schematic design plans

# Overall Timeline





Mountain View  
Whisman  
School District

# Initial Drafts For Each School

**OUTDOOR LEARNING  
LEGEND**

- 1 SCHOOL FRONTAGE - SEATING AREAS FOR PICK-UP/DROP-OFF UNDER EXISTING TREES WITH DECOMPOSED GRANITE, NATURAL SEATING ELEMENTS AND NATIVE PLANTING
- 2 LIBRARY - OUTDOOR CLASSROOM/ GATHERING AREA AT LIBRARY ENTRY WITH SEATING AND NATIVE SHADE TREE. CONVERT UN-USED LAWN AREAS INTO BUTTERFLY AND POLLINATOR GARDENS
- 3 CLASSROOM WINGS - SMALL GROUP SEATING AREAS SUITABLE FOR CLASS BREAKOUT ACTIVITIES, ONE-ON-ONE EMOTIONAL REGULATION, OR OTHER COUNSELING SESSIONS. PICNIC TABLES, NATIVE PLANTING RAISED BEDS AND NEW NATIVE SHADE TREES
- 4 MUR BUILDING - MOUNDED NATIVE AND POLLINATOR PLANTING WITH NATIVE TREES AND NATURAL SEATING
- 5 LOOP PATH - 1/4 MILE PAINTED WALKING/ RUNNING LOOP ON MAIN SCHOOL YARD
- 6 SMALL LOOP - ENHANCEMENT OF EXISTING PAINTED TRIKE LOOP. SHADE TREES IN NEW TREE WELLS. PAINTED ASPHALT
- 7 MAIN YARD PLANTING - TREE GROVE WITH DECOMPOSED GRANITE, NATURAL SEATING ELEMENTS AND NATIVE PLANTING
- 8 NATURE PLAY & GATHERING AREA - EXTENSIVE NEW TREE CANOPY OVER FLEXIBLE NATURE AREA WITH STUMPS, LOGS, BOULDERS, PICNIC TABLES AND OTHER ELEMENTS. VARIETY OF SURFACING TYPES INCLUDING MOUNDING, DECOMPOSED GRANITE, FLAGSTONE AND ENGINEERED WOOD FIBER. SUITABLE FOR PLAY, EXPLORATION, OUTDOOR LEARNING, PERFORMANCE AND MEDIUM SIZE EVENTS
- 9 POSSIBLE COMMUNITY TREE PLANTING OPPORTUNITY



**OUTDOOR LEARNING**  
**AMY IMAI ELEMENTARY SCHOOL**  
 MOUNTAIN VIEW, CALIFORNIA

POSSIBLE SITE IMPROVEMENTS  
 NOVEMBER 21, 2024



**OUTDOOR LEARNING  
LEGEND**

- 1** SCHOOL FRONTAGE - SEATING AREAS FOR PICK-UP/DROP-OFF WITH DECOMPOSED GRANITE, NATURAL SEATING ELEMENTS, AND NATIVE PLANTING
- 2** LIBRARY - OUTDOOR GATHERING AREA AT LIBRARY ENTRY WITH DECOMPOSED GRANITE AND NATURAL SEATING
- 3** CLASSROOM WINGS - SMALL GROUP SEATING AREAS SUITABLE FOR CLASS BREAKOUT ACTIVITIES, ONE-ON-ONE EMOTIONAL REGULATION, OR OTHER COUNSELING SESSIONS, PICNIC TABLES, NATIVE PLANTINGS, AND NEW NATIVE SHADE TREES
- 4** LOOP PATH - 1/7 MILE PAINTED WALKING/RUNNING LOOP ON MAIN SCHOOL YARD
- 5** MAIN YARD PLANTING - TREE GROVE WITH DECOMPOSED GRANITE, PICNIC TABLES, NATURAL SEATING ELEMENTS AND NATIVE PLANTING
- 6** PERFORMANCE AREA - STAGE WITH PAINTED ASPHALT UNDER EXISTING SOLAR CANOPY, NEW SHADE TREES WITH NATIVE PLANTING AND TURF MOUNDS
- 7** NATURE PLAY & GATHERING AREA - EXTENSIVE NEW TREE CANOPY OVER FLEXIBLE NATURE AREA WITH STUMPS, LOGS, BOULDERS, AND OTHER ELEMENTS. VARIETY OF SURFACING TYPES INCLUDING MOUNDING, LAWN, DECOMPOSED GRANITE AND ENGINEERED WOOD FIBER. SUITABLE FOR PLAY, EXPLORATION, OUTDOOR LEARNING, PERFORMANCE AND MEDIUM SIZED EVENTS, DECOMPOSED GRANITE PATH CONNECTING TO PAINTED WALKING LOOP ON MAIN SCHOOL YARD
- 8** POSSIBLE COMMUNITY TREE PLANTING OPPORTUNITY



**OUTDOOR LEARNING  
LEGEND**

- 1 MISTRAL KINDERGARTEN YARD - NEW PLANTING AND TREES TO THE EXISTING PLANTING AREA AROUND THE PLAY YARD
- 2 MISTRAL CLASSROOM WINGS - SMALL GROUP SEATING AREAS SUITABLE FOR CLASS BREAKOUT ACTIVITIES, ONE-ON-ONE EMOTIONAL REGULATION, OR OTHER COUNSELING SESSIONS. NEW SITE FURNISHINGS, NATIVE PLANTING AND NEW NATIVE SHADE TREES
- 3 MISTRAL LEARNING GARDEN - EXPANDED LEARNING GARDEN AREA WITH NEW RAISED BEDS, PICNIC TABLES, TEACHING TABLE, CHALKBOARD, NATIVE PLANTING AND MULCHED SURFACING WITH BOULDERS, STUMPS AND LOGS
- 4 MISTRAL EXISTING OAK TREE - COMPOSITE WOOD TOP TO EXISTING CONCRETE SEAT WALL BENEATH OAK TREE
- 5 LIBRARY COURTYARD - NEW PLANTING AT ENTRY TO LIBRARY
- 6 LIBRARY SOUTH - SEATING AREA WITH DECOMPOSED GRANITE PAVING, PICNIC TABLES, AND CANOPY TREES. INFORMAL NATURAL SEATING AND NEW PLANTING TO EXISTING PLANTED AREA
- 7 MAIN YARD PAINTING - PAINTED ASPHALT AT MAIN LUNCH AREA (SCHOOL MASCOTS)
- 8 NATURE PLAY & DISCOVERY IN EXISTING TREE GROVE - ROCK SWALE WITH STUMPS, LOGS, AND BOULDERS TO CREATE BALANCE AND DISCOVERY ZONE. BRIDGE CONNECTION OVER SWALE. NEW TREES AND PLANTING. INFORMAL GATHERING AREAS SUITABLE FOR OUTDOOR LEARNING AND SOCIALIZING.
- 9 STAGE - FLUSH DECK IN NATURE ZONE FOR IMAGINATIVE PLAY AND SMALL PERFORMANCES
- 10 CASTRO ART COURTYARD - OUTDOOR ART & DISPLAY SPACE WITH DECOMPOSED GRANITE PAVING, OUTDOOR ART DISPLAY CASES, SEATING AND NATIVE PLANTING
- 11 CASTRO LEARNING GARDEN - IMPROVED LEARNING GARDEN AREA WITH NEW RAISED BEDS, PICNIC TABLES, TEACHING TABLE, CHALKBOARD, NATIVE PLANTING AND NEW NATIVE SHADE TREES, DECOMPOSED GRANITE PAVING
- 12 CASTRO CLASSROOM WINGS - SMALL GROUP SEATING AREAS SUITABLE FOR CLASS BREAKOUT ACTIVITIES, ONE-ON-ONE EMOTIONAL REGULATION, OR OTHER COUNSELING SESSIONS. PICNIC TABLES NATIVE PLANTING AND NEW NATIVE SHADE TREES
- 13 CASTRO KINDERGARTEN YARD - NEW TREES, PLANTING AND NATURAL SURFACING WITH BOULDER/STUMP BALANCING PERIMETER. SMALL GROUP SEATING AREAS WITH TERRACED SEATING AND DECOMPOSED GRANITE PAVING
- 14 POSSIBLE COMMUNITY TREE PLANTING OPPORTUNITY



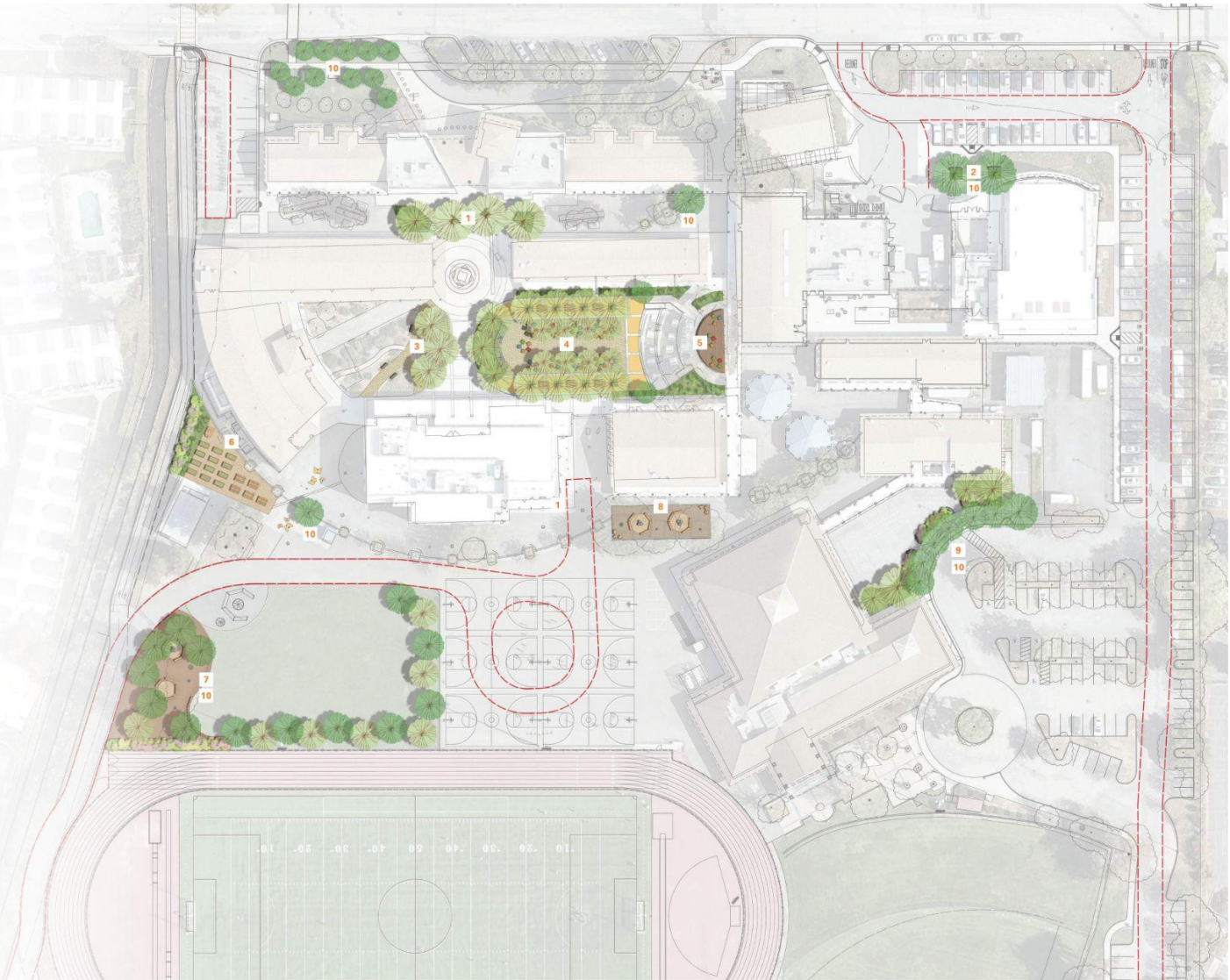
**OUTDOOR LEARNING  
CASTRO MISTRAL ELEMENTARY SCHOOL**  
MOUNTAIN VIEW, CALIFORNIA

POSSIBLE SITE IMPROVEMENTS  
NOVEMBER 21, 2024



**OUTDOOR LEARNING  
LEGEND**

- 1 ENTRY GROVE - NEW SHADE TREES WITH NATIVE PLANTING AND SEATING ELEMENTS
- 2 AUDITORIUM ENTRY - REPLACE EXISTING TREES WITH LARGER SHADE TREES AND SEATING ELEMENTS
- 3 EXISTING NATIVE GARDEN - FLAGSTONE PAVING, SEATING AND NEW LARGE SHADE TREES ADDED TO EXISTING NATIVE GARDEN
- 4 MAIN STUDENT QUAD - GATHERING AREA/ EVENT GROVE WITH FLAGSTONE PAVING, TERRACED STONE SEATING AND MOUNDED NATIVE PLANTING, NEW SHADE TREES IN TREE WELLS, OR FLAGSTONE PAVING. SEATING ELEMENTS INCLUDE PICNIC TABLES AND ADIRONDACK CHAIRS
- 5 MAIN QUAD PERFORMANCE AREA - FLUSH WOOD DECK AROUND EXISTING TREES FOR AMPHITHEATER STAGE
- 6 LEARNING GARDEN - ENHANCED DECOMPOSED GRANITE WITH PICNIC TABLES, NEW RAISED BEDS AND GARDEN SHED FOR OUTDOOR LEARNING, NEW SCREENING HEDGE WITH POLLINATOR NATIVE PLANTING AREA
- 7 NATURE EXPERIENCE AREA - EXTEND EXISTING REDWOOD GROVE WITH NEW SHADE TREES OVER FLEXIBLE NATURE AREA WITH STUMPS, LOGS, BOULDERS, AND OTHER ELEMENTS. VARIETY OF SURFACING TYPES INCLUDING DECOMPOSED GRANITE AND ENGINEERED WOOD FIBER, SUITABLE FOR EXPLORATION, OUTDOOR LEARNING, AND GENERAL SOCIALIZING
- 8 GATHERING AREA - EXPAND SEATING AREAS WITH DECOMPOSED GRANITE, AROUND EXISTING TREES WITH NATURAL SEATING ELEMENTS AND ENGINEERED WOOD FIBER, SUITABLE FOR LUNCH, OUTDOOR LEARNING, AND GENERAL SOCIALIZING. SERVES AS A BUFFER AND TRANSITION FROM LUNCH AREA TO MAIN YARD
- 9 EYM FRONTAGE - NEW SHADE TREE AND SCREENING HEDGE WITH NATIVE PLANTING AND NATURAL ELEMENTS
- 10 POSSIBLE COMMUNITY TREE PLANTING OPPORTUNITY



**OUTDOOR LEARNING  
CRITTENDEN MIDDLE SCHOOL**  
MOUNTAIN VIEW, CALIFORNIA

POSSIBLE SITE IMPROVEMENTS  
NOVEMBER 21, 2024

**CARDUCCI  
ASSOCIATES**

**OUTDOOR LEARNING  
LEGEND**

- 1 OUTDOOR CLASSROOM - OUTDOOR CLASSROOM AT EXISTING SCIENCE WING WITH PICNIC TABLES, DECOMPOSED GRANITE, TEACHING TABLE AND CHALKBOARD
- 2 CLASSROOM WINGS - SMALL GROUP AND FULL CLASS SEATING AREAS SUITABLE FOR CLASS BREAKOUT ACTIVITIES, ONE-ON-ONE EMOTIONAL REGULATION, OR OTHER COUNSELING SESSIONS, PICNIC TABLES, TEACHING TABLES, CHALKBOARDS, NATIVE PLANTING, RAISED BEDS AND NEW NATIVE SHADE TREES
- 3 EXISTING LEARNING GARDEN - NEW SHED, TEACHING TABLE AND CHALKBOARD AT EXISTING LEARNING GARDEN
- 4 LUNCH GROVE - REGULAR GRID OF LARGE SHADE TREES AT EXISTING LUNCH AREA
- 5 GATHERING AREAS - SEATING AREAS WITH DECOMPOSED GRANITE, ROUND PICNIC TABLES, MOVEABLE FURNITURE, LOGS, BOULDERS, AND NATIVE PLANTING, SUITABLE FOR LUNCH, OUTDOOR LEARNING, AND GENERAL SOCIALIZING. SERVES AS A BUFFER AND TRANSITION FROM THE MAIN YARD TO THE LUNCH AREA
- 6 NATURE EXPERIENCE ZONE - EXTENSIVE NEW CANOPY TREES AROUND A CENTRAL DECOMPOSED GRANITE AREA WITH TERRACED STONE SEATING, STUMPS, LOGS, AND BOULDERS AROUND PERIMETER AS ADDITIONAL INFORMAL SEATING, BALANCING, AND TREE/PLANT PROTECTION, ABUTTED BY A LARGE MULCHED AREA WITH ADDITIONAL TREES THAT BUFFER SCHOOL SPACE FROM ADJACENT LAWN, SUITABLE FOR PLAY, EXPLORATION, OUTDOOR LEARNING, PERFORMANCE AND MEDIUM SIZE EVENTS.
- 7 RELOCATED BIKE PARKING - RELOCATION OF BIKE PARKING FROM MAIN YARD TO SCHOOL ENTRY AREA WITH SECURE CHAIN LINK FENCE AND GATE



**OUTDOOR LEARNING**  
**GRAHAM MIDDLE SCHOOL**  
MOUNTAIN VIEW, CALIFORNIA

POSSIBLE SITE IMPROVEMENTS  
NOVEMBER 21, 2024

**CARDUCCI**  
ASSOCIATES

**OUTDOOR LEARNING  
LEGEND**

- 1 KINDERGARTEN YARD - NEW PLANTING, TREES AND NATURE PLAY CIRCUIT. DECOMPOSED GRANITE, ENGINEERED WOOD FIBER AND TURF SURFACING. FORMAL AND INFORMAL SEATING OPPORTUNITIES, PICNIC TABLES FOR OUTDOOR LEARNING AND GATHERING. SCREENING SHRUBS AROUND PERIMETER
- 2 SCHOOL FRONTAGE - SEATING AREAS FOR PICK-UP/DROP-OFF UNDER EXISTING TREES WITH DECOMPOSED GRANITE, NATURAL SEATING ELEMENTS AND NATIVE PLANTING.
- 3 LIBRARY COURTYARD - DECOMPOSED GRANITE AND SEATING AND NATIVE SHADE TREE AT LIBRARY ENTRY. CONVERT UN-USED LAWN AREAS INTO BUTTERFLY AND POLLINATOR GARDENS
- 4 LEARNING GARDEN - IMPROVED LEARNING GARDEN AREA WITH NEW RAISED BEDS, PICNIC TABLES, TEACHING TABLE, CHALKBOARD, NATIVE PLANTING AND DECOMPOSED GRANITE PAVING
- 5 CLASSROOM WINGS - SMALL GROUP SEATING AREAS SUITABLE FOR CLASS BREAKOUT ACTIVITIES, ONE-ON-ONE EMOTIONAL REGULATION, OR OTHER COUNSELING SESSIONS. PICNIC TABLES, NATIVE PLANTING AND NEW NATIVE SHADE TREES
- 6 MAIN YARD PLANTING - TREE GROVE WITH DECOMPOSED GRANITE, NATURAL SEATING ELEMENTS AND NATIVE PLANTING
- 7 LOOP PATH - 1/4 MILE PAINTED WALKING/ RUNNING LOOP ON MAIN SCHOOL YARD
- 8 SOLAR ARRAY - AC PAVING TO CURRENTLY UNPAVED SEATING AREA BENEATH SOLAR ARRAY
- 9 NATURE EXPERIENCE ZONE - EXTENSIVE NEW TREE CANOPY THROUGHOUT FLEXIBLE NATURE AREA. CENTRAL DECOMPOSED GRANITE AREA WITH TERRACED STONE SEATING, STUMPS, LOGS AND BOULDERS PROVIDE INFORMAL SEATING AND BALANCING COURSE. VARIETY OF SURFACING TYPES INCLUDING MOUNDED PLANTING AREAS, DECOMPOSED GRANITE AND ENGINEERED WOOD FIBER, DRY CREEK BED WITH FALLEN LOGS AND BOULDERS. FLEXIBLE TURF ZONE. TREES THAT BUFFER SCHOOL SPACE FROM ADJACENT LAWN. SUITABLE FOR PLAY, EXPLORATION, OUTDOOR LEARNING, PERFORMANCE AND MEDIUM SIZE EVENTS
- 10 LOOP PATH - DECOMPOSED GRANITE EXTENSION OF PAINTED 1/4 MILE LOOP WITH CONNECTION TO NATURE EXPERIENCE ZONE
- 11 POSSIBLE COMMUNITY TREE PLANTING OPPORTUNITY



**OUTDOOR LEARNING**  
**LANDELS ELEMENTARY SCHOOL**  
MOUNTAIN VIEW, CALIFORNIA

POSSIBLE SITE IMPROVEMENTS  
NOVEMBER 21, 2024



**OUTDOOR LEARNING  
LEGEND**

- 1** EXISTING PLAYGROUND - EXPANDED NATURE PLAY AREAS UNDER EXISTING TREES WITH ENGINEERED WOOD FIBER AND STUMPS, LOGS, BOULDERS, AND OTHER ELEMENTS FOR BALANCING, GATHERING AND EXPLORATION. NEW COMPLIANT CONCRETE ACCESS RAMP INTO PLAY AREA AND RELOCATED PICNIC TABLES
- 2** NATURAL AMPHITHEATER - REGRADE LAWN MOUND TO EXPAND GATHERING/PERFORMANCE SPACE WITH TERRACED STONE SEATING, DECOMPOSED GRANITE PAVING WITH STUMPS AND LOGS, NEW BENCHES AND NATIVE PLANTING UNDER EXISTING TREE
- 3** LEARNING GARDEN - EXPANDED EXISTING GARDEN WITH NEW SHADE TREES AND DECOMPOSED GRANITE PICNIC TABLES, NEW RAISED BEDS, BLACKBOARD, AND TEACHING TABLE FOR OUTDOOR LEARNING. EXPANDED NATIVE AND POLLINATOR GARDEN. KEEP EXISTING GARDEN SHED IN PLACE
- 4** OUTDOOR CLASSROOM - OUTDOOR CLASSROOM WITH FLAGSTONE PAVING, PICNIC TABLES, BOULDERS AND STUMPS IN DECOMPOSED GRANITE. NEW SHADE TREES WITH NATIVE PLANTING
- 5** LUNCH AREA - NEW SHADE TREES IN DECOMPOSED GRANITE WITH BOULDERS, AND LOG SPIRAL BENCH FOR GATHERING AND GENERAL SOCIALIZING
- 6** NATURE PLAY & GATHERING AREA - EXTENSIVE NEW TREE CANOPY OVER FLEXIBLE NATURE AREA WITH STUMPS, LOGS, BOULDERS, AND OTHER ELEMENTS. VARIETY OF SURFACING TYPES INCLUDING NATIVE PLANTING, DECOMPOSED GRANITE AND ENGINEERED WOOD FIBER. SUITABLE FOR PLAY, EXPLORATION, AND OUTDOOR LEARNING
- 7** KINDER YARD - ENHANCED KINDER YARD WITH LAWN, NATIVE PLANTING, SCREENING HEDGE AND NATURE ZONES OF ENGINEERED WOOD FIBER WITH STUMP, LOGS AND BOULDERS BALANCING COURSE ALONG PERIMETER. REMOVE LAWN UNDER EXISTING LARGE TREES TO PROVIDE ENGINEERED WOOD FIBER AND BOULDERS FOR SEATING AND GATHERING OPPORTUNITIES
- 8** SCHOOL FRONTAGE - SEATING AREAS FOR PICK-UP/DROP-OFF WITH DECOMPOSED GRANITE FLAGSTONE PAVING AROUND EXISTING FOUNTAIN WITH NATURAL SEATING ELEMENTS LIKE BOULDERS, LOGS AND STUMPS. NEW SHADE TREE AND NATIVE PLANTING
- 9** POSSIBLE COMMUNITY TREE PLANTING OPPORTUNITY



**OUTDOOR LEARNING**  
**MONTA LOMA ELEMENTARY SCHOOL**  
MOUNTAIN VIEW, CALIFORNIA

POSSIBLE SITE IMPROVEMENTS  
NOVEMBER 21, 2024



**OUTDOOR LEARNING  
LEGEND**

- 1** SPORTS AND GATHERING LAWN - MAINTAIN NATURAL LAWN SPACE FOR GATHERING, SPORTS ACTIVITY, AND PLAY WITH 1/2 MILE COLORED TRACK LOOP.
- 2** NATURE BUFFER - NEW PERIMETER SHADE TREES WITH NATIVE PLANTING, AND NATURAL ELEMENTS LIKE BOULDERS, LOGS AND STUMPS FOR EXPLORATION AND PLAY.
- 3** NATURE PLAY & GATHERING AREA - NEW SHADE TREE OVER FLEXIBLE NATURE AREA WITH TABLES, STUMPS, LOGS, BOULDERS, AND OTHER ELEMENTS. VARIETY OF SURFACING TYPES INCLUDING MOUNDING, DECOMPOSED GRANITE AND ENGINEERED WOOD FIBER, DECOMPOSED GRANITE PATH CONNECTING TO COLORED TRACK LOOP. SUITABLE FOR PLAY, EXPLORATION, AND OUTDOOR LEARNING.
- 4** PERFORMANCE AREA - STAGE IN DECOMPOSED GRANITE WITH NATURAL ELEMENTS LIKE BOULDERS, STUMPS AND LOGS FOR SEATING. NEW TREE CANOPY WITH NATIVE PLANTING AND MOUNDING FOR SCREENING.
- 5** MAIN YARD PLANTING - NEW SHADE TREES WITH NATIVE PLANTING.
- 6** LEARNING GARDEN - EXPANDED EXISTING GARDEN WITH NEW SHADE TREES AND NATIVE PLANTING, AND DECOMPOSED GRANITE PAVING, NEW RAISED BEDS, GARDEN SHED, BLACKBOARD, TEACHING TABLE, LEARNIGN TABLES AND NATURAL SEATING ELEMENTS FOR OUTDOOR LEARNING.
- 7** KINDER YARD - ENHANCED KINDER YARD WITH NEW SHADE TREES, NATIVE PLANTING, AND NATURE ZONE OF ENGINEERED WOOD FIBER WITH STUMP, LOGS AND BOULDERS.
- 8** POSSIBLE COMMUNITY TREE PLANTING OPPORTUNITY.



**OUTDOOR LEARNING**  
**STEVENS ON ELEMENTARY SCHOOL**  
 MOUNTAIN VIEW, CALIFORNIA

POSSIBLE SITE IMPROVEMENTS  
 NOVEMBER 21, 2024

**CARDUCCI**  
 ASSOCIATES

**OUTDOOR LEARNING  
LEGEND**

- 1 SCHOOL FRONTAGE - SEATING AREAS FOR PICK-UP/DROP-OFF WITH DECOMPOSED GRANITE, NATURAL SEATING ELEMENTS, NEW TREES AND NATIVE PLANTING
- 2 OUTDOOR CLASSROOM - PICNIC TABLES, DECOMPOSED GRANITE AND INCREASED CANOPY
- 3 GATHERING/PERFORMANCE SPACE - FLAGSTONE STAGE AND DECOMPOSED GRANITE SEATING AREA WITH NATURAL SEATING ELEMENTS SUCH AS LOGS, BOULDERS, AND STUMPS, SURROUNDED BY NEW TREES, DECOMPOSED GRANITE PATHS TO ADJACENT CONCRETE WALKWAYS, SUITABLE FOR OUTDOOR LEARNING, PERFORMANCE AND MULTI-CLASS EVENTS.
- 4 MAIN YARD SEATING - SEATING AREA WITH NEW TREES AND NATIVE PLANTING.
- 5 NATURE PLAY AREAS - ADDITION OF NATURE PLAY AREA AND TREES ADJACENT TO EXISTING PLAY STRUCTURES, STUMPS AND LOG BALANCING PERIMETER WITH ENGINEERED WOOD FIBER SURFACING
- 6 MAIN YARD PAINTING - PAINTING OF EXISTING ASPHALT BASKETBALL COURTS
- 7 PHYSICAL COMFORT ZONE - TREE GROVE WITH DECOMPOSED GRANITE, NATURAL SEATING ELEMENTS AND NATIVE PLANTING
- 8 CONCRETE COLUMNS - CONCRETE AND ASPHALT PAINTING TO BASE OF AND ON EXISTING CONCRETE COLUMNS
- 9 OUTDOOR CLASSROOM - FORMAL LEARNING SPACE IN EXISTING PLANTED AREA, ENGINEERED WOOD FIBER SURFACING WITH DECOMPOSED GRANITE PATHS AND NATURAL SEATING ELEMENTS
- 10 PRE-/T-K YARD - NEW PLANTING, TREES AND NATURE PLAY CIRCUIT IN THE ENCLOSED T/K PRE-K YARD, ENGINEERED WOOD FIBER SURFACING, WATER PLAY ZONE WITH NEW CONCRETE PAVING, FORMAL AND INFORMAL SEATING OPPORTUNITIES, PAINTED ASPHALT PAVING.
- 11 NEW PLANTING AND TREES AROUND EXISTING PLAY STRUCTURE
- 12 LEARNING GARDEN - IMPROVED LEARNING GARDEN AREA WITH NEW RAISED BEDS, PICNIC TABLES, TEACHING TABLE, CHALKBOARD, NATIVE PLANTING AND NEW NATIVE SHADE TREES, DECOMPOSED GRANITE PAVING.
- 13 POSSIBLE COMMUNITY TREE PLANTING OPPORTUNITY.



**OUTDOOR LEARNING**  
**THEUERKAUF ELEMENTARY SCHOOL**  
 MOUNTAIN VIEW, CALIFORNIA

POSSIBLE SITE IMPROVEMENTS  
 NOVEMBER 21, 2024



# Recommended Next Steps

- Community meetings at each site to discuss draft plans and possible adjustments.
- Staff is recommending that a member from Carducci remotely attend each meeting to help answer questions on the design. We would bring an amendment to the Board for this item.
- Presentation to Board in March 2025 for approval (based on revised timeline).



Mountain View  
Whisman  
School District

# Questions