



## Bubb Elementary Canopy Tree Planting Proposal

At Canopy, we believe that expanding the urban forest is so much more than just planting trees. It is a *movement* where community members join gloves to invest in their wellbeing, joy, and resilience in our changing climate. We hope you join us in this movement to foster a lifetime of environmental stewardship, care, and advocacy in your students.



Included in this document is Canopy's proposed tree planting designs for the Bubb Elementary campus. We have included recommended planting locations, tree species information, and the itemized cost estimate

These trees would be planted *with* the school community. Volunteers of all ages and experience levels are welcome to participate. Canopy will provide all necessary

materials and tools for volunteers to use during the planting. Canopy will work with Bubb Elementary to determine a suitable date and time to host the planting workday.

The school will be responsible for maintaining and irrigating the trees after they are planted. Extensive tree care guidance and recommendations can be found at <https://canopy.org/tree-info/caring-for-trees/>.

---

## Table of Contents

Bubb Elementary Planting Site Map	2
Planting Locations	3
Species Information	4
Cost Estimates	10

## Planting Locations

- 40 trees will be planted throughout the school to provide screening, shade, and biodiversity to the campus, as shown in the map below. The trees will be sourced from Google Tree Farm in 15 gallon bags.



### Bubb Elementary Tree Master Planting Map | October 30, 2024

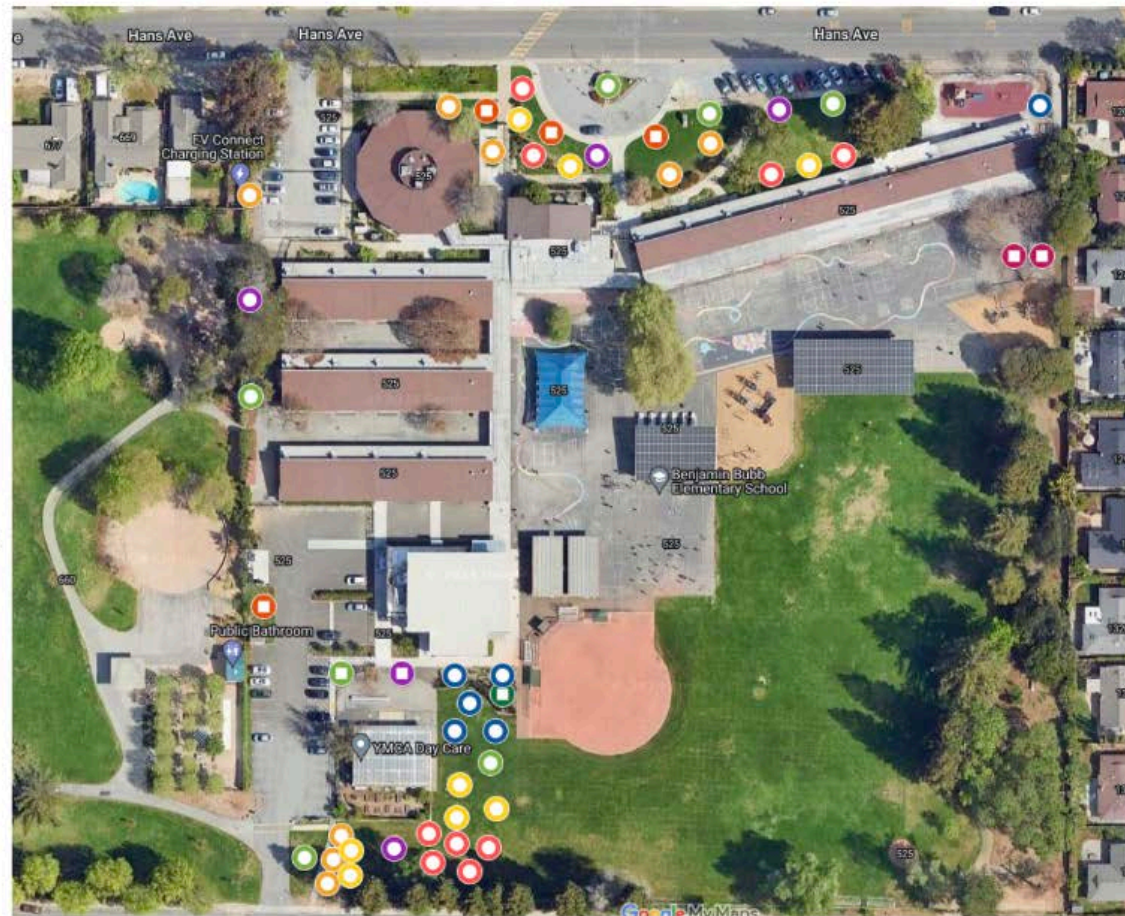


**40**  
Community-Planted  
Trees (15 gal)

**9** Box Trees  
(needs to be installed  
by contractor; 24"+  
box)

- Community Planted Tree - Western redbud
- Community Planted Tree - Pacific wax myrtle
- Community Planted Tree - Hollyleaf cherry
- Community Planted Tree - Coast live oak
- Community Planted Tree - Hairy blue elderberry
- Community Planted Tree - Valley oak
- Box Trees - Black oak
- Box Trees - Blue oak
- Box Trees - Coast live oak
- Box Trees - Valley oak
- Box Trees - Vine maple

Complete map of possible tree planting locations, including sizes and species, if applicable.



## Species Information

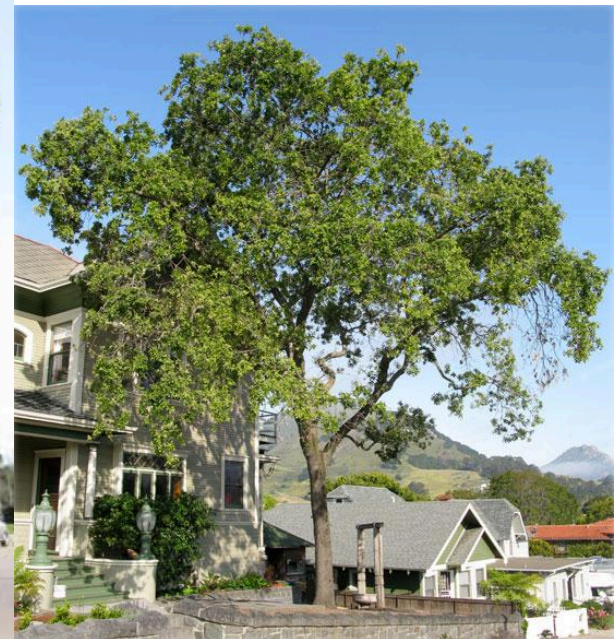
### *Quercus agrifolia* - Coast Live Oak

- Evergreen tree
- 70 ft tall, 30-70 ft wide
- Low water needs, drought tolerant once established, doesn't tolerate summer watering



## *Quercus lobata* - Valley Oak

- Deciduous tree
- 70 ft tall, 50 ft wide
- Medium watering needs, drought tolerant once established



## ***Cercis occidentalis* - Western Redbud**

- Deciduous tree/shrub
- 25 ft tall, 1-20 ft wide
- Medium watering needs, drought tolerant once established.
- Attracts local wildlife



## ***Morella californica* - Pacific Wax Myrtle**

- Evergreen tree/shrub
- 30 ft tall, 10-30 ft wide
- Medium watering needs
- Screen and provides food and habitat for native wildlife



## *Prunus ilicifolia* - Hollyleaf Cherry

- Evergreen tree/shrub
- 30 ft tall, 10-25 ft wide
- Low watering needs
- Screen and provides food and habitat for native wildlife



## ***Sambucus nigra* - Blue Elderberry**

- Deciduous tree/shrub
- 30 ft tall, 10-20 ft wide
- Medium watering needs
- Screen and provides food and habitat for native wildlife



## Cost Estimates

Trees		
Tree Species	Qty	Cost; delivery not included
Blue Elderberry	2	Donated by Google
California Wax Myrtle	7	Donated by Google
Coast Live Oak	4	Donated by Google
Hollyleaf Cherry	6	Donated by Google
Valley Oak	4	Donated by Google
Western Redbud	7	Donated by Google
Staff Time		
Type	Staff	Cost
Site Visit and Planning Meetings	TPM, CF1, ED	\$19,199.73
Event Planning & Tool Prep	CF1, TCC, CF2, TPM, ED	
Truck Rental	CF1, TCC	
Volunteer Coordination	VEM, CF1	
Tree Sourcing Coordination with Google	TPM, CF1, ED	
Collateral and Education Prep	CF1, CMC, EE, TPM, ED	
Planting Event (set up, tree and tool drop off, event, and clean up)	TPM, CF1, VEM, TCC, CF2, ED	
Community Outreach (school assemblies, community recruitment)	EE, CF1, VEM	
Other Costs		

Truck Rental & Gas	\$500.00
Hospitality (Drinks, Snacks)	\$250.00
<b>Proposal Total</b>	<b>\$19,949.73</b>

TPM = Tree Programs Manager  
 CF1 = Community Forester #1  
 CF2 = Community Forester #2  
 TCC = Tree Care Coordinator  
 VEM = Volunteer Engagement Manager  
 CMC = Communications & Marketing Coordinator  
 ED = Executive Director  
 EE = Environmental Educator