



Mountain View  
Whisman  
School District

# Alterations to the District Office and Portable Complex Schematic Design Presentation

June 13, 2024



Mountain View  
Whisman  
School District

# Context and History

# The Need

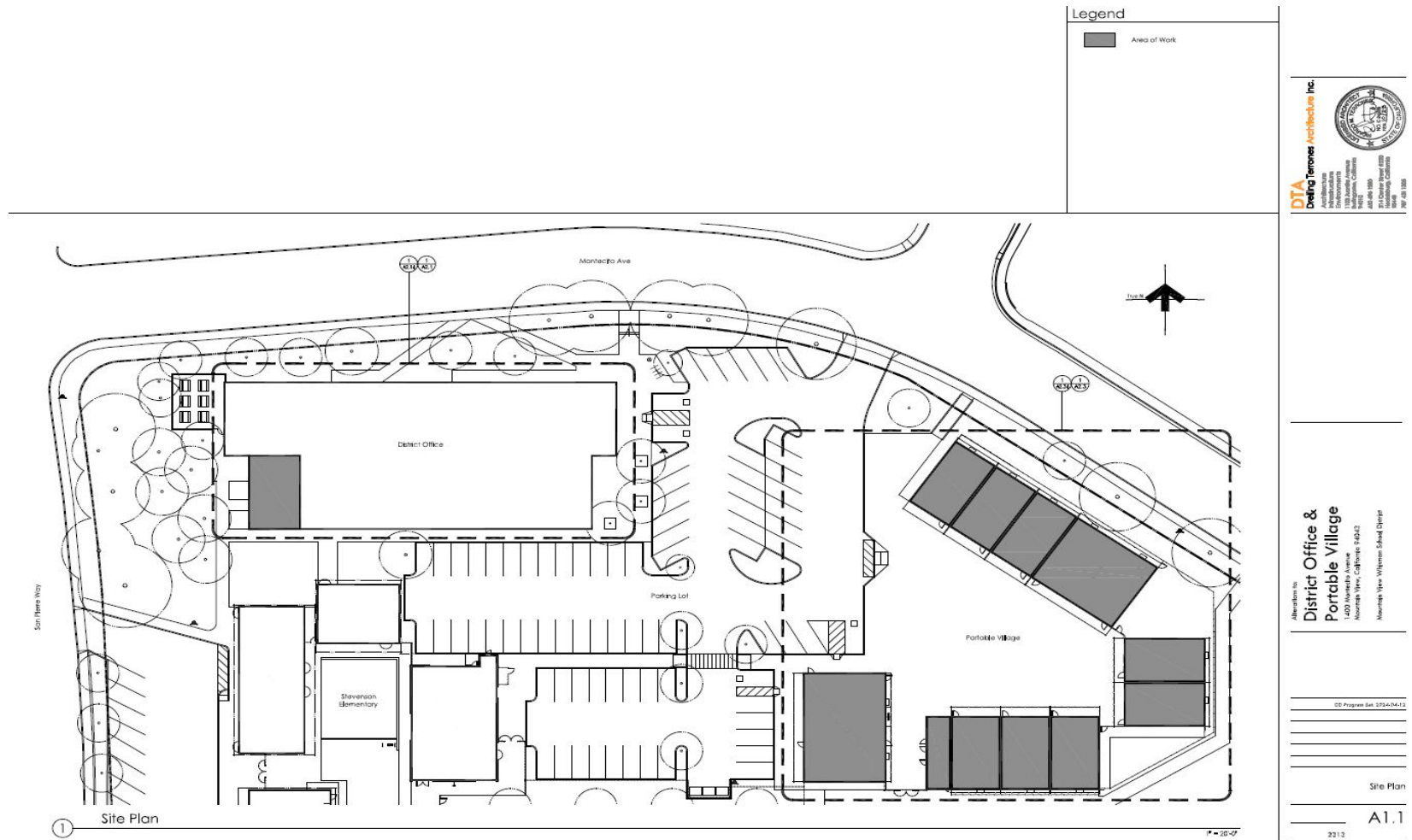
- Need for increased workstations and office space for itinerant staff/teachers (early literacy team, vision specialists and behaviorists) and District Office personnel.
- Better organization of departments and like responsibilities in the District Office portable annex.



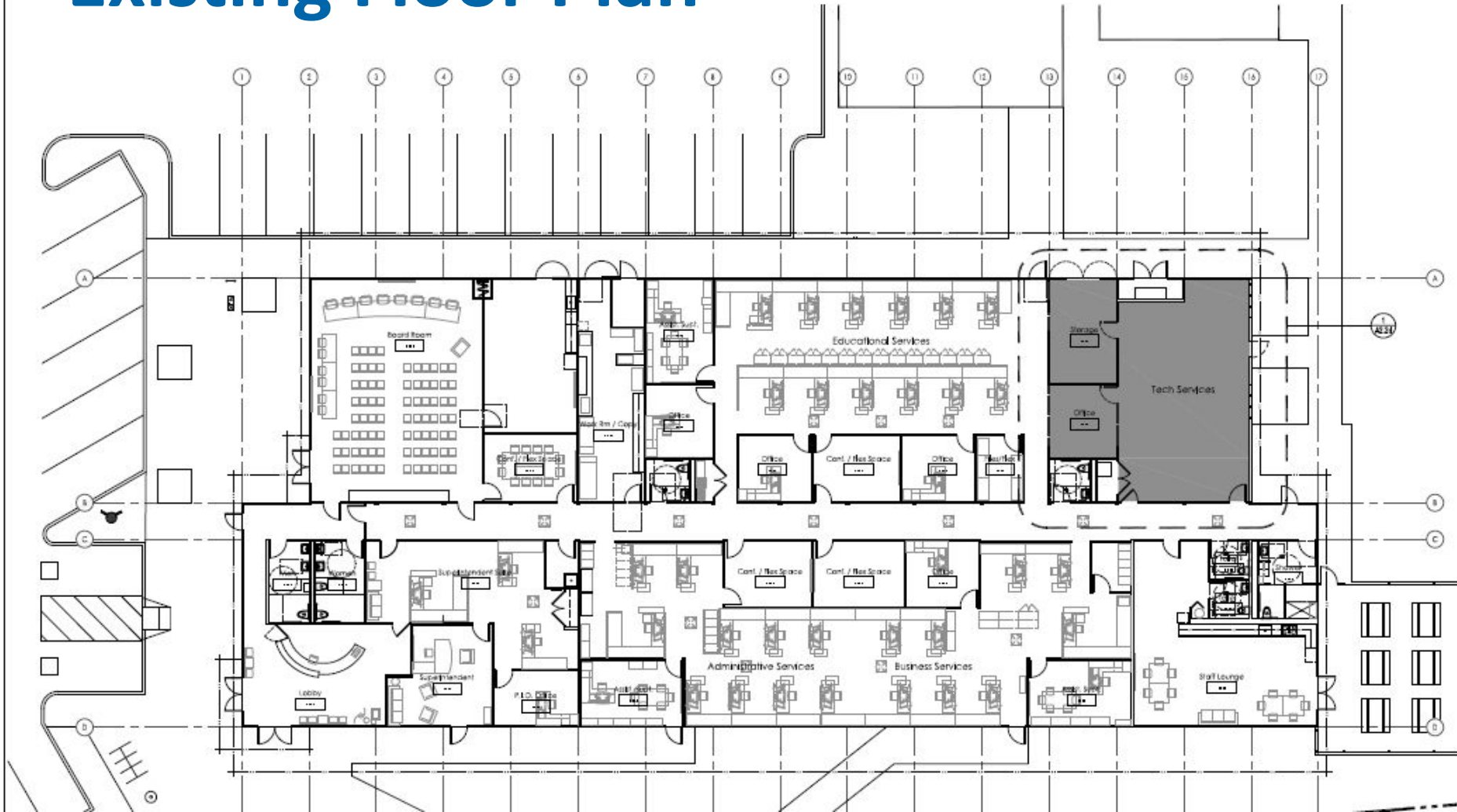
Mountain View  
Whisman  
School District

# Schematic Design Drawings

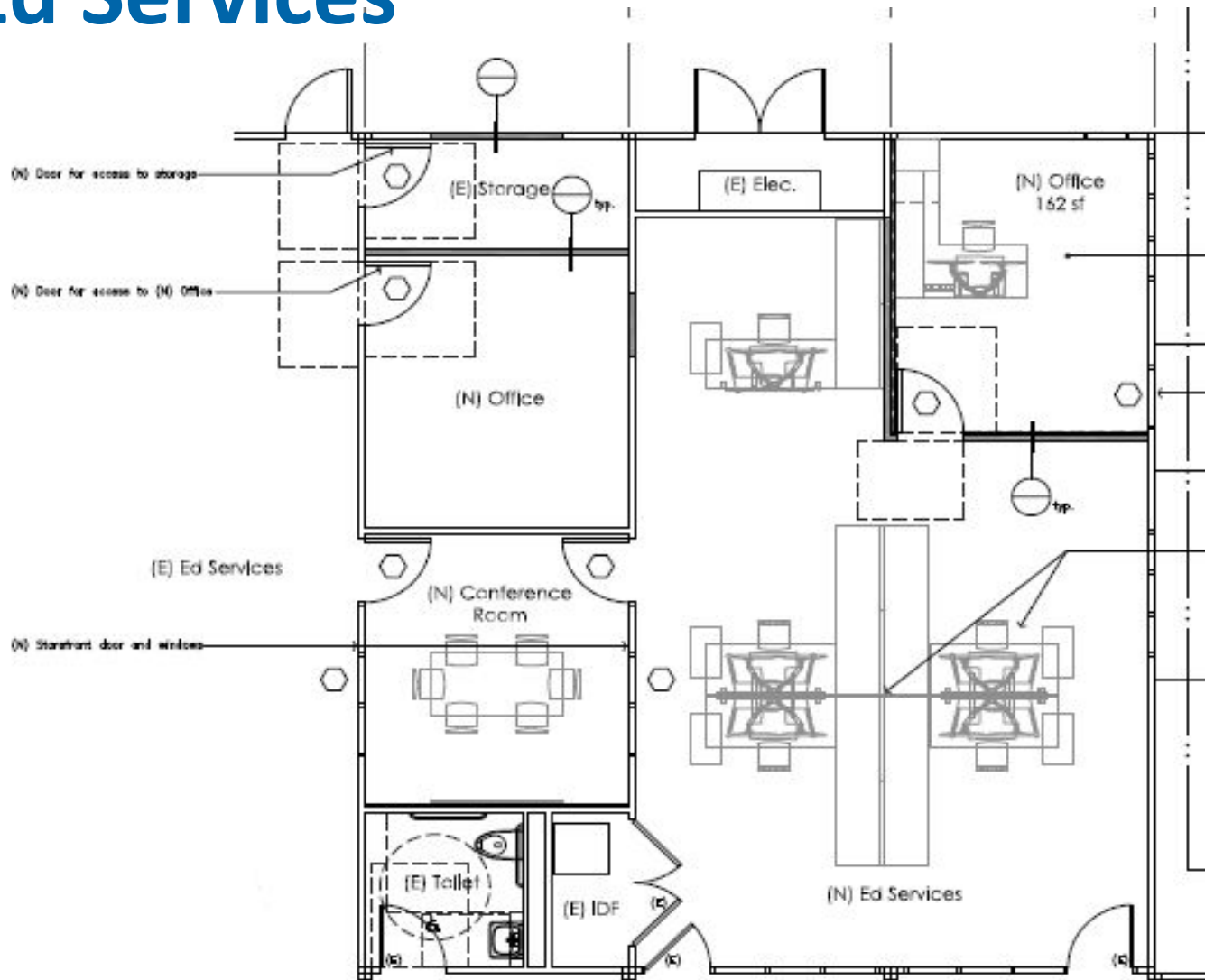
# Schematic Design



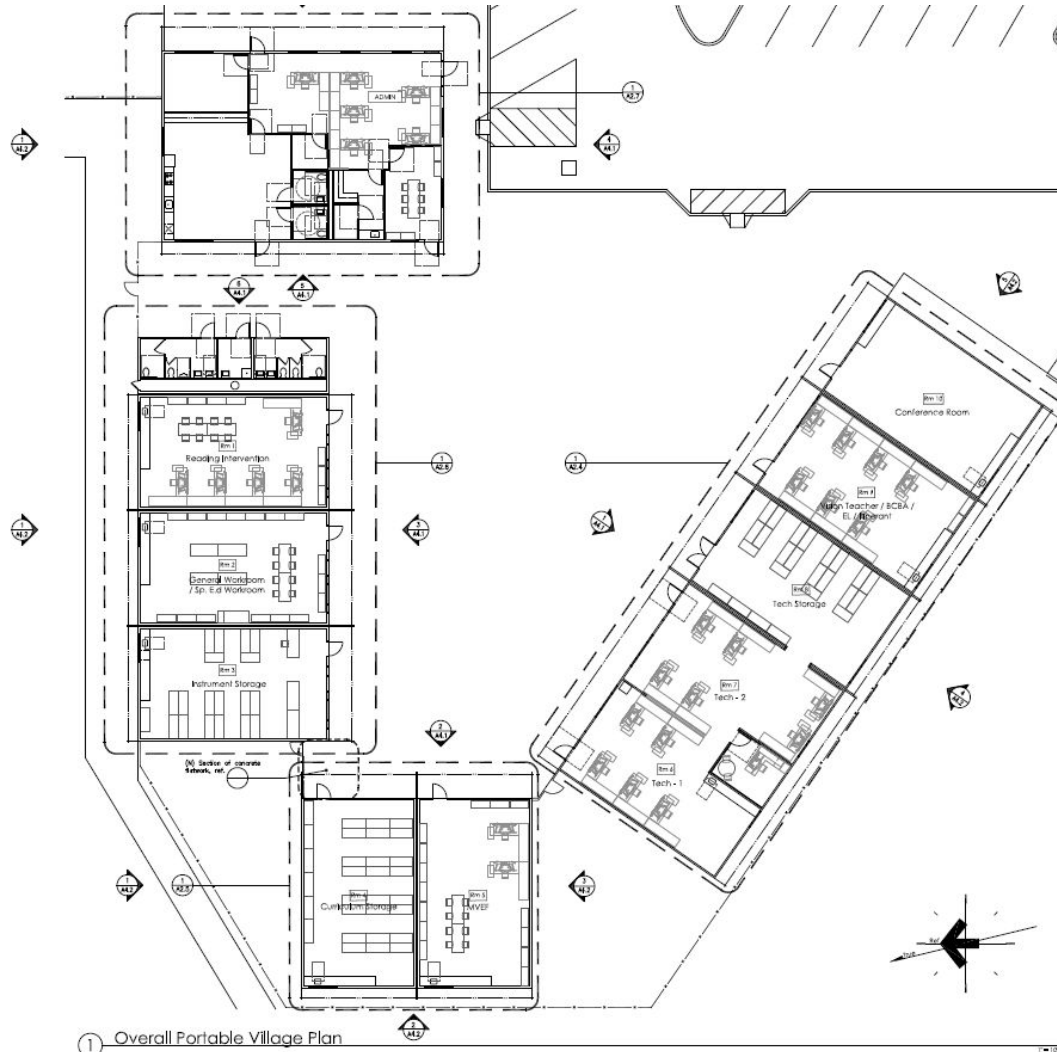
# Existing Floor Plan



# New Floor Plan - additional desk space for Ed Services



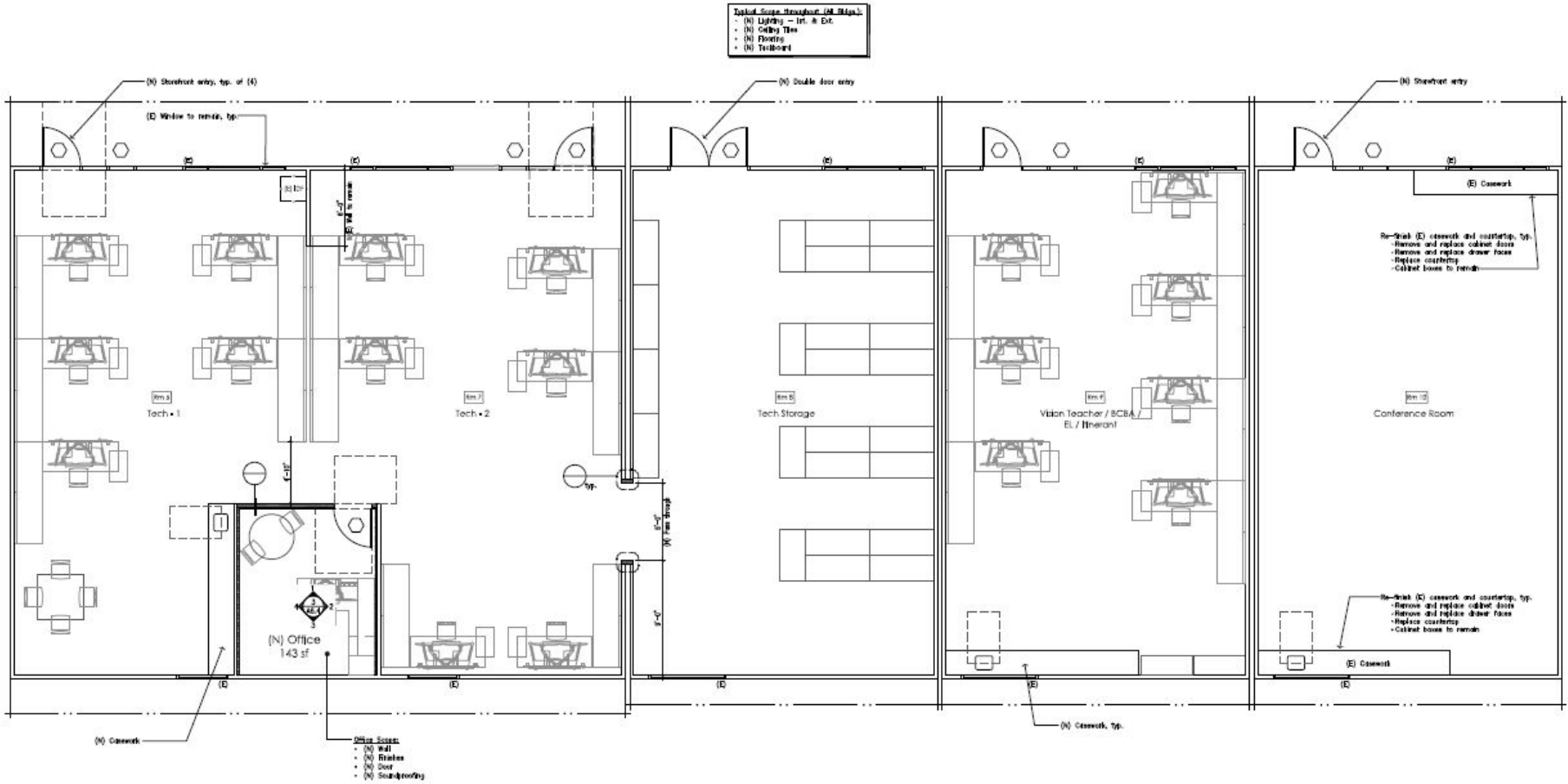
# New Portable Village Floor Plan



1 Overall Portable Village Plan

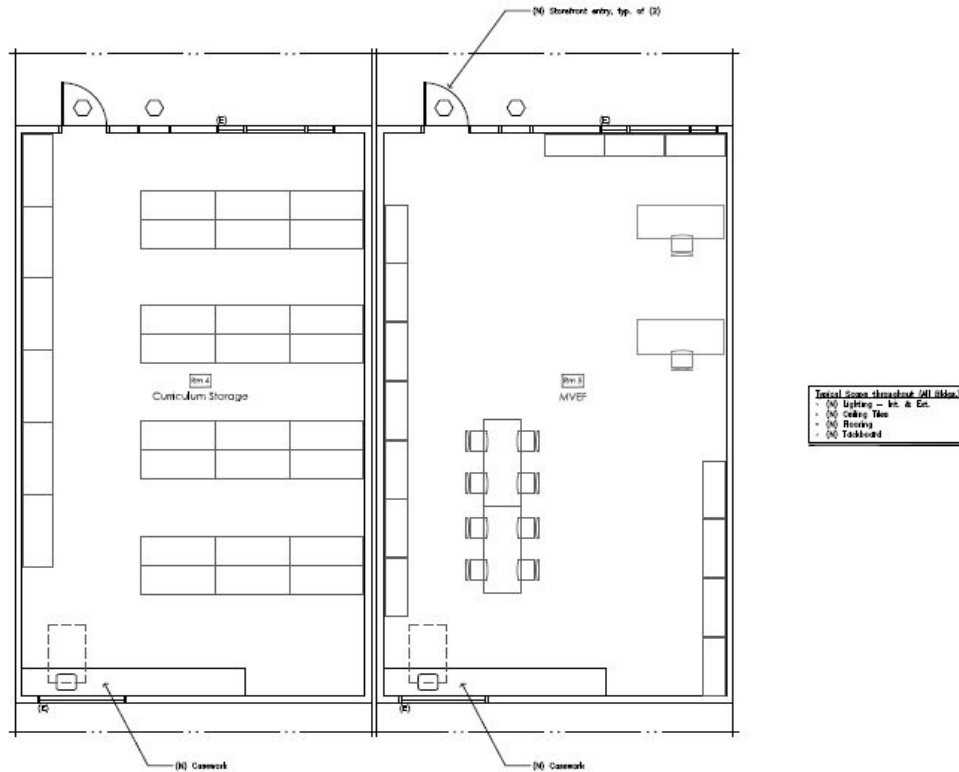


# Portable 6-10 New Floor Plans



① Portables 6-10: Floor Plans

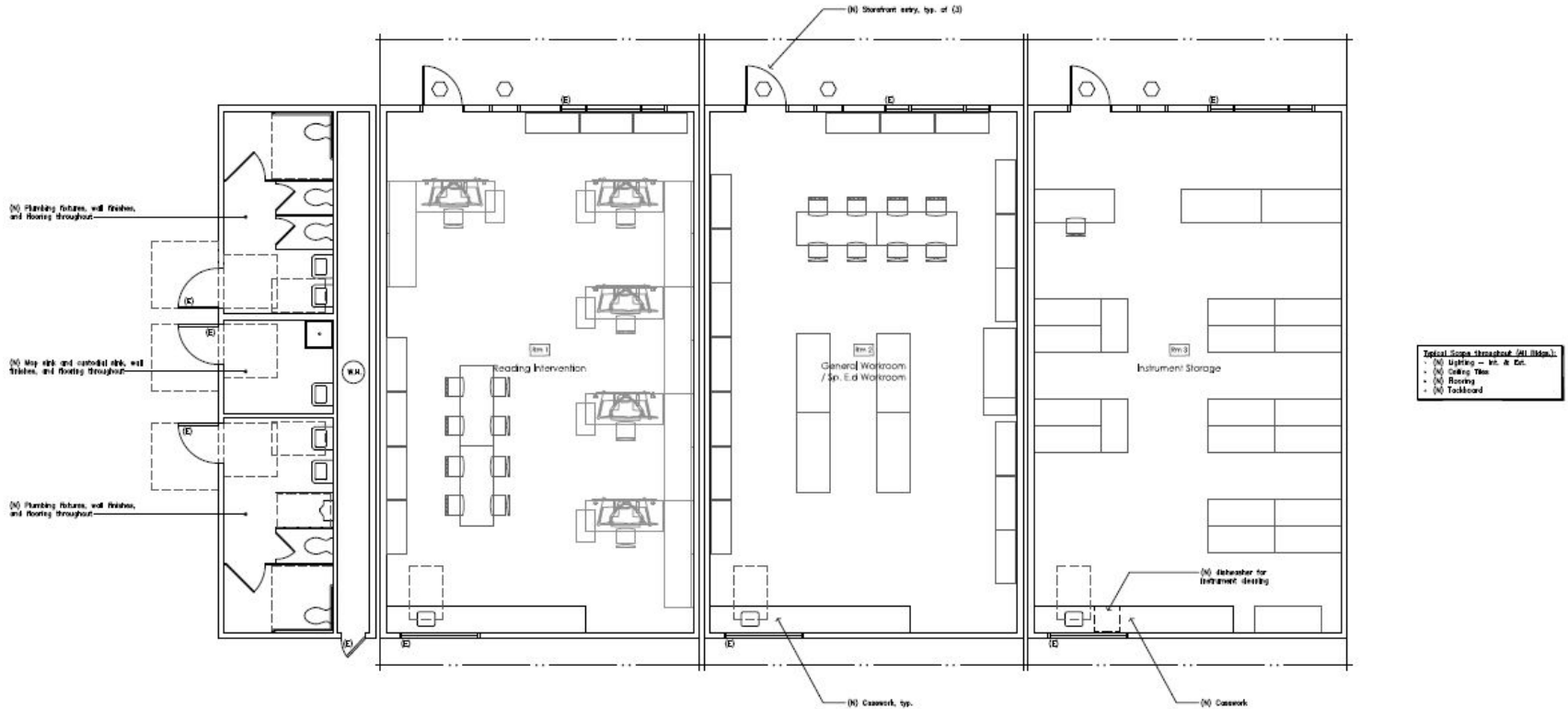
# Portable 4-5 New Floor Plans



① Portables 4-5: Floor Plans

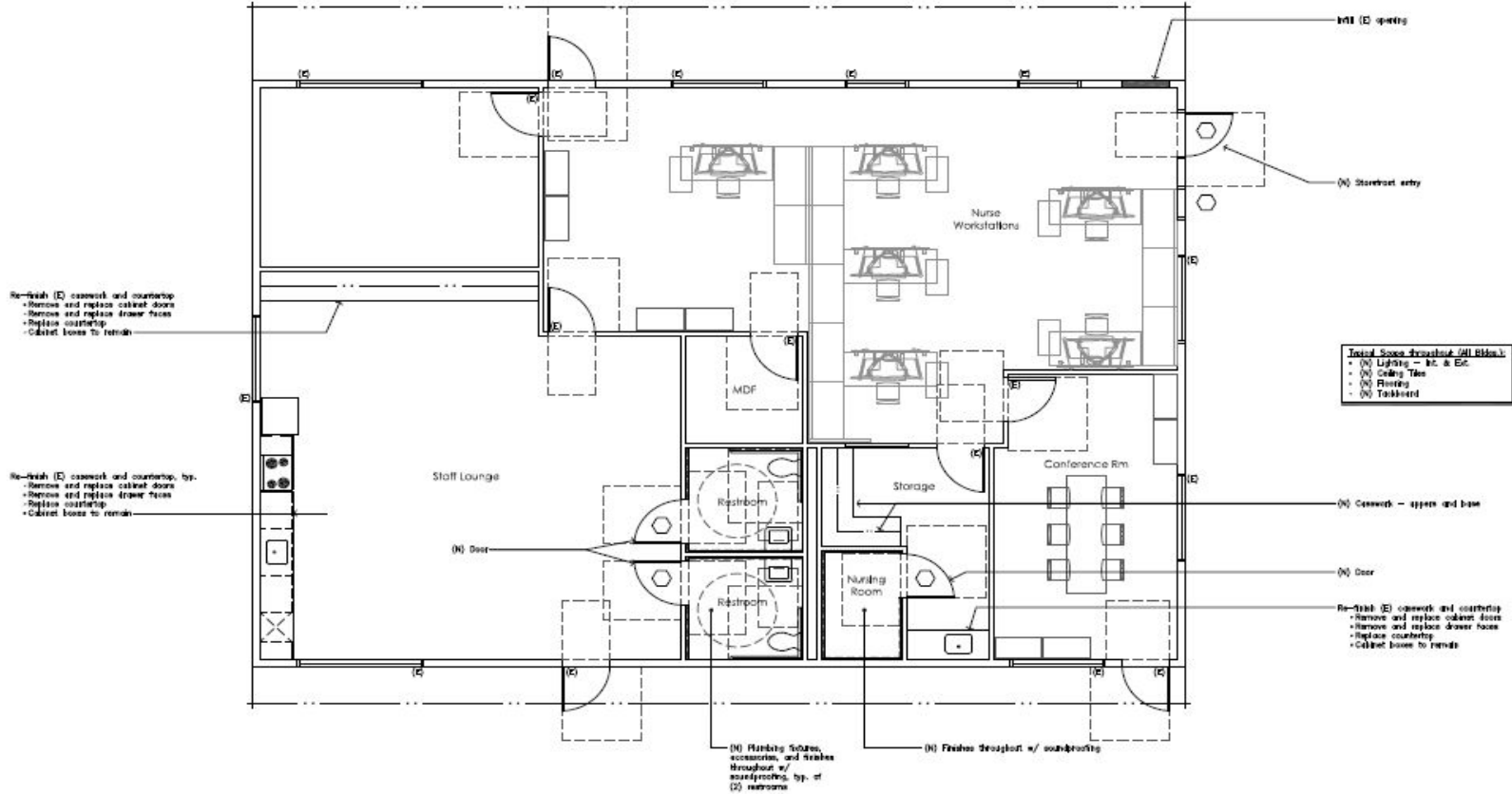
1/20/2020

# Portable 1-3 Floor Plans



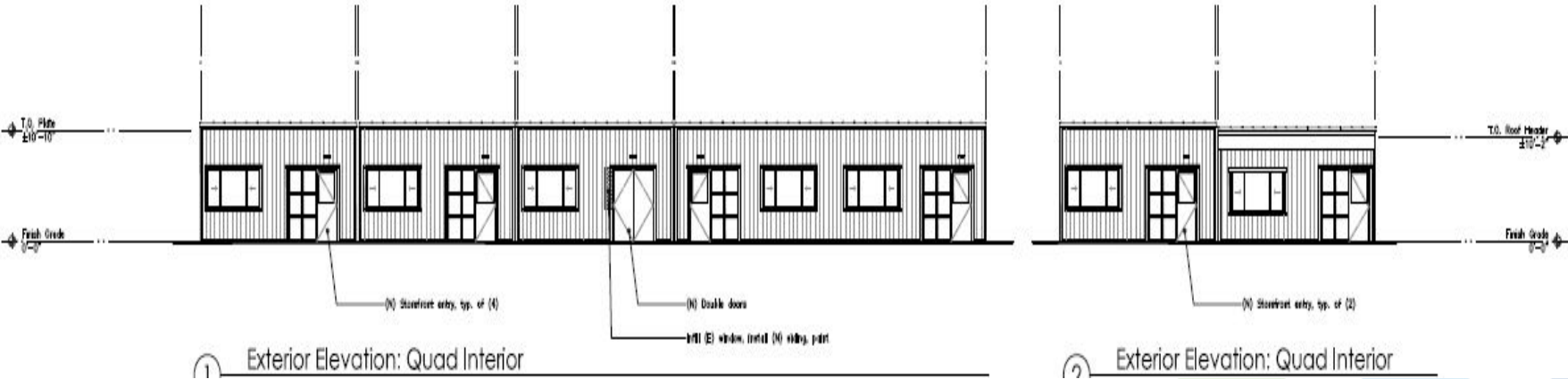
① Portables 1-3 & Toilets: Floor Plans

# Portable Admin Building Floor Plan



1 Portables Admin: Floor Plan

# Typical Exterior Elevations





Mountain View  
Whisman  
School District

# Budget

# Schematic Design Budget

Description	Quantity	Unit Cost	Subtotal
District office Subtotal			\$ 362,430.00
Tech Portables Subtotal			\$ 258,960.00
Standard Portable Finishes			\$ 616,000.00
Restrooms and Custodial			\$ 69,900.00
Administration Portable			\$ 285,070.00
<b>Total Direct Cost</b>			<b>\$ 1,592,360</b>
General Conditions	4 mos	\$ 60,000	\$ 240,000
Contractors Fee	5.5 %		\$ 87,580
Bonds & Insurances	2.1 %		\$ 38,399
<b>Anticipated Bid Amount</b>			<b>\$ 1,958,339</b>

Project Cost			
Description	Quantity	Unit Cost	Subtotal
Construction Budget	1 ls		\$ 1,958,339
Design Contingency	10 %		\$ 195,834
Construction Contingency	10 %		\$ 195,834
Architect Fees	1 ls		\$ 140,565
Architect Contingency	1 ls		\$ 27,417
Architect Reimbursable Expenses	1 ls		\$ 3,514
Blueprinting	1 ls	\$ 1,500	\$ 1,500
PM/CM Fees	4.5 %		\$ 96,938
DSA Inspector	4 mos.	\$ 8,500	\$ 34,000
Bid Advertisements	1 ls		\$ 2,500
DSA Fees	1.2 %	\$ 2,350,006	\$ 28,200
CEQA	1 ls	\$ 1,500	\$ 1,500
Legal	1 ls	\$ 2,500	\$ 2,500
Moving Expenses	1 ls	\$ 5,000	\$ 5,000
FF&E	1 ls	\$ 10,000	\$ 10,000
Misc. Expenses	1 ls	\$ 15,000	\$ 15,000
<b>Grand Total</b>			<b>\$ 2,718,640</b>

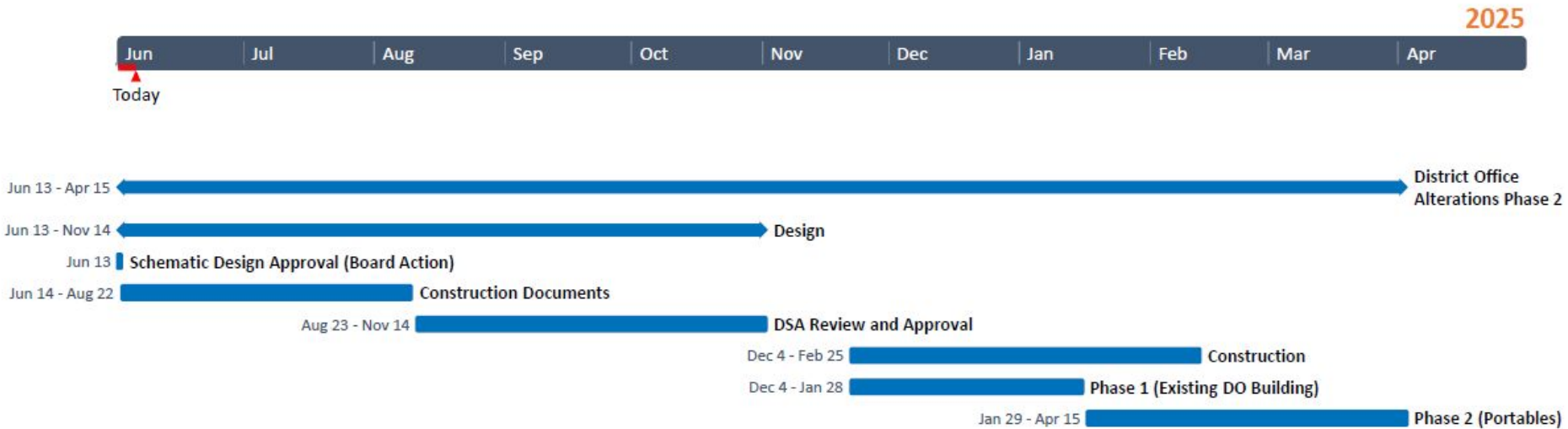


Mountain View  
Whisman  
School District

# Schedule



# Schematic Design Schedule





Mountain View  
Whisman  
School District

# Questions

# Recommendations

Staff recommends that the Board approve the schematic design, as presented.