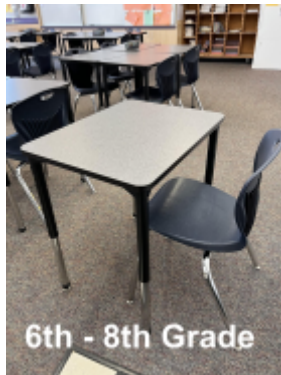
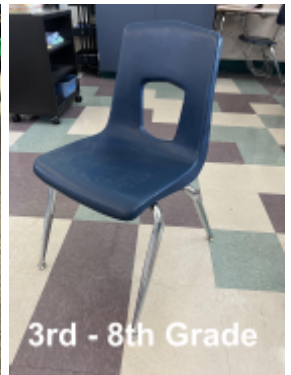
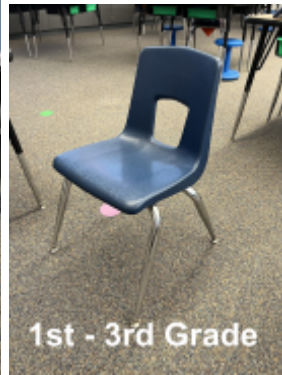
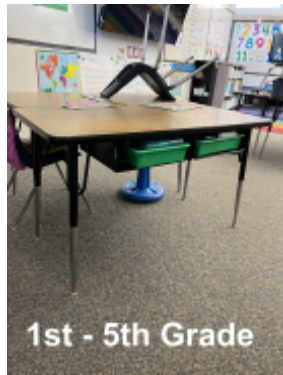


# Mountain View Whisman School District Classroom Furniture Standards



## Standard classroom list of furniture

- Student desk - 1 per student
- Student chair Plus 5 chairs for the activity table
- Teachers desk & Chair
- Group table - horseshoe, round, rectangle
- 1 trashcan & 1 recycle bin
- 4 foot presentation table - **optional**
- Front door mat 3x5
- Activity rug Provided by the site for TK-1st grade

## Preschool

- Cubbies
- Rectangle table 60"
- Round table 30" & 42"
- Easel
- Classroom shelves
- Kitchen set
- Sand / Water table
- Horseshoe Teaching table
- Stacking chairs 11 ½
- Bookstand
- Activity rug
- Front door mat

## TK

- 4, 5 or 6 foot Tables
- 4 or 6 small chairs per table
- Activity table with 4, 5 or 6 chairs - **optional**
- Activity Rug
- Teachers desk & chair
- 1 trash can and 1 recycle bin
- 4 foot presentation table - **optional**
- Front door mat 3x5

## Kindergarten

- 6 foot rectangle table
- 6 Kinder chairs per table
- Round or horseshoe table plus 6 chairs - **optional**
- Activity rug Provided by the site TK-1st grade

- Teachers desk & chair
- 1 trash can and 1 recycle bin
- 4 foot presentation table - **optional**
- Front door mat 3x5

## Grade 1 - 5

- Student desks - 1 per student
  - Single desk or double desk
- Student chair
- Teachers desk
- Teacher chair
- Group table with chairs - horseshoe, round, rectangle - **optional**
- 1 trash can and 1 recycle bin
- 4 foot presentation table - **optional**
- Front door mat 3x5

## Grade 6, 7 & 8

- Student desks - 1 per student
  - Single desk or sled desk
- Student chair
- Teachers desk
- Teacher chair
- Group table with chairs - horseshoe, round, rectangle - **optional**
- 1 trash can and 1 recycle bin
- 4 foot presentation table - **optional**
- Front door mat 3x5

**If additional furniture is needed. The district will provide it to them if available. Custom furniture to be purchased by site.**

## Furniture that should not be in Classrooms:

- No couches, recliners or big fabric chair
- Additional furniture must be approved by the Site Admin, Director of M.O.T and **MUST BE** fire rated.
- Bean bag chairs
- Pillows
- Anything fabric that isn't fire resistant
- Excessive paper on walls (Fire Hazard)



## Examples of Furniture that should be replaced:

- Deep gouges or holes in the table top or seat that may cause a sharp edge
- Explicit words, pics or comments carved in.
- Missing, broken or malfunctioning parts of the furniture
  - Broken leg or foot
  - Slamming table top
  - Chair basket missing
  - Broken welds
  - Missing tops
- Excessive rust

## Furniture color standard:

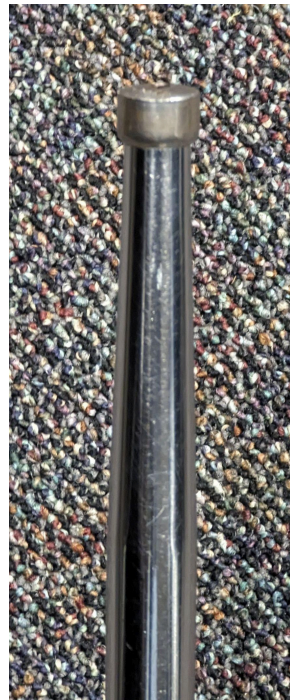
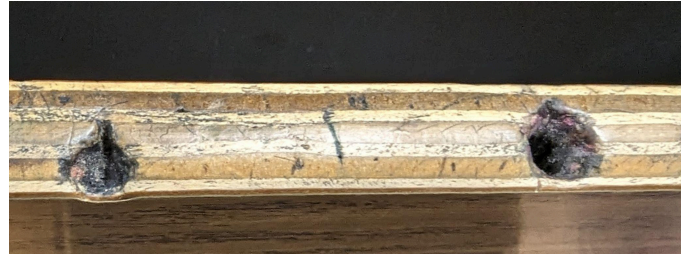


**Desks & Table tops**



**Chair Color**

## Examples of damage to furniture that would be taken out of the room:





## **Classroom**

Audio/Video equipment:

- 75 inch or larger commercial TV
- Kramer VIA presentation device
- FrontRow CB6000 Touch-based control panel
- FrontRow amplifier (models vary)
- FrontRow speakers (models vary)
- FrontRow pendant teacher microphone
- FrontRow wall-mounted classroom microphone

## **Teacher assigned equipment:**

- Apple laptop
- Apple iPad

Additional equipment:

- Poly VOIP phone

## **Student Technology**

- All students in K-8 are assigned a Chromebook
- New Chromebooks are issued to Kinder and 5th grade students