



SESSION 4

AI AND EDUCATION

60 minutes

AI + CUSD

Presentation made with the help of



Toolkit for Education

What is Artificial Intelligence?



Generative AI



Generative AI: Tools that create text, images, code, and sound based on vast datasets.

Generative AI tools such as Bard, Bing, and ChatGPT, are trained on massive amounts of data to recognize patterns and relationships between words, images, sounds and code. They use that understanding to generate brand-new, original, often creative outputs customized to the prompts users provide.

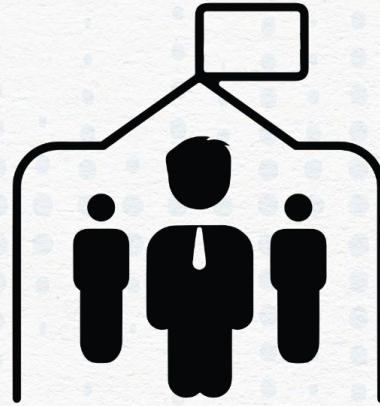
Why AI?



AI and Machine Learning Jobs are Growing

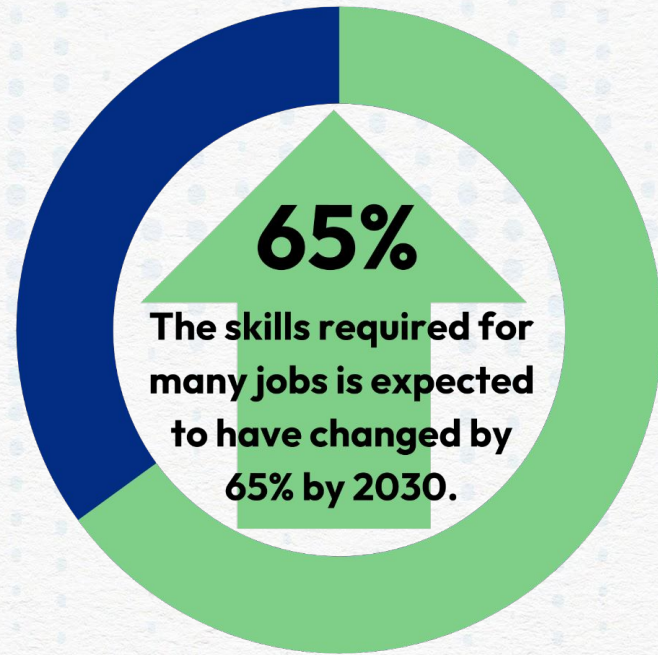
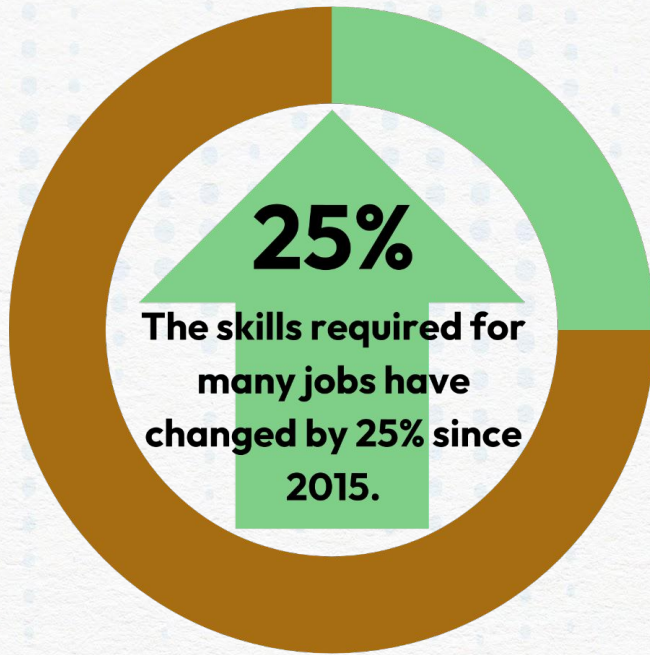


AI or machine learning jobs
will grow by 40%.



Over 1 million new jobs are
expected by 2027.

◆ Skills Required for Job Success are Changing



Will AI Widen the Digital Divide?

Old Digital Divide

Computers in
Schools, High
Speed Internet,
1:1 devices...



New Digital Divide

Who is empowered
to learn with and
about AI

AI Benefits and Risks



Education with AI is:

- Personalized learning: More practice problems for struggling students, more advanced concepts for students who are ahead
- Differentiation in seconds
- Increased student persistence
- Handwriting conversion to digital
- Text to speech, speech to text
- Language Translation

Education with AI is NOT:

- Replacing teachers
- Going to solve every problem
- One more thing that needs to take a lot of time for busy educators
- Another subject that must be separate from Computer Science

Types of Questions about AI in Education

Risk

Opportunity

Present

“How do we stop kids from cheating?”

“How can we use AI tools to improve education?”

Future

“Will AI replace teachers?”

“How can we rethink education in an age of AI?”

Potential Benefits & Risks of Using AI in Education

Potential Benefits

Content development and differentiation

Assessment design and timely, effective feedback

Tutoring and **personalized** learning assistance

Aiding **creativity** and **collaboration**

Operational and administrative **efficiency**

Misinformation, errors, and academic dishonesty

Diminished student and teacher agency and **accountability**

Compromised student **privacy** and unauthorized data collection

Overreliance and loss of critical thinking

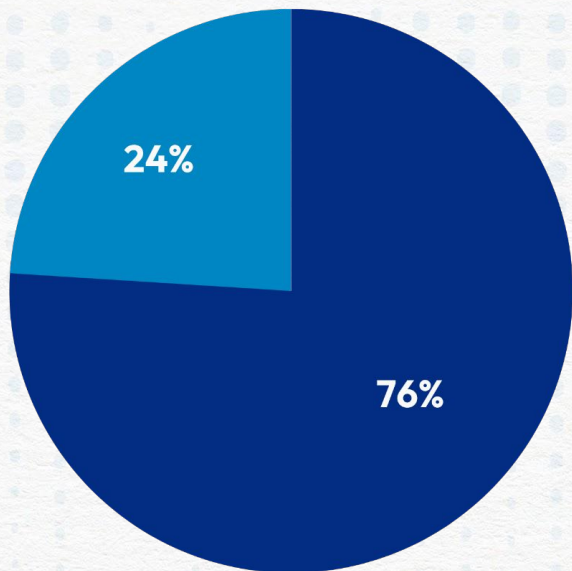
Societal bias and lack of cultural sensitivity

Potential Risks

Teachers AI Use for Work

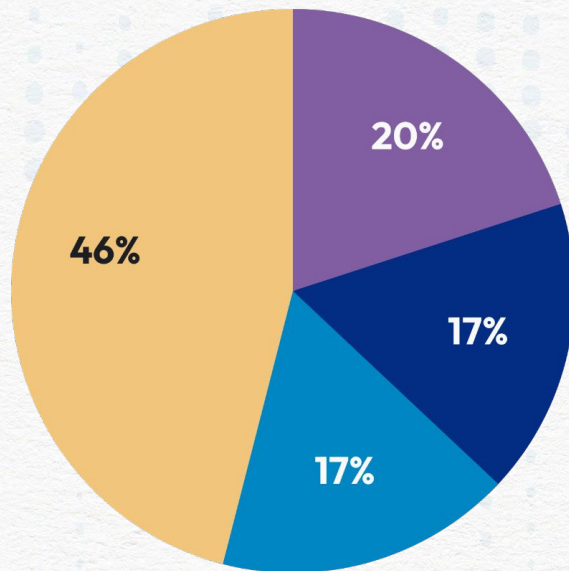
Do teachers use AI for work?

Some use of AI for work Never use AI for work



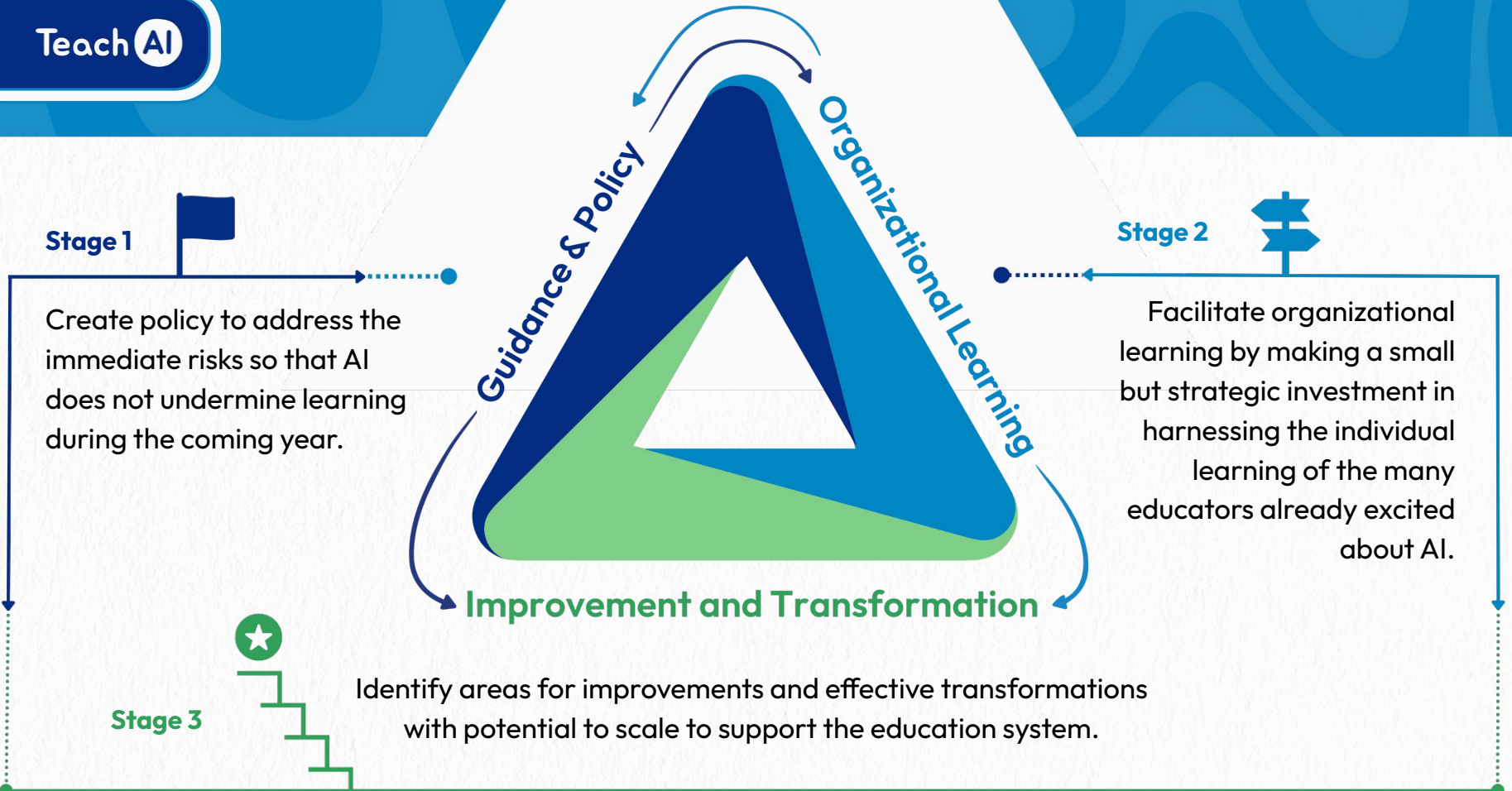
If teachers use AI what do they use it for?

Planning and preparation Communication
Individualized instruction Other



Steps for Implementing AI





Next Steps for CUSD

Policies

- BP 5131.9: Academic Honesty
- Update: Acceptable Use Policy for Staff and Students

Guidance

- Allowable uses for staff, teachers, and students
- Best practices
- Provide guidance to families

Professional Development

- Teacher efficacy
- Benefits and Risks
- Deeper Learning/ Personalized Learning

Exploration

- Investigate partnerships with solutions
- Instruct and evaluate student AI use
- Ensure academic integrity and ethical applications
- AI to support instruction₁₆

Khanmigo

