



Mountain View
Whisman
School District

Vargas Greening and Outdoor Learning Project Schematic Design Presentation

February 9, 2023

Guiding Principles

Strategic Plan 2027

Goal Area 5

- Equitable distribution of resources that support student success.
- Goal 5a: Ensure facilities and resources equitably serve all students.

Master Facility Plan

- In December of 2019, the Board approved the Master Facilities Plan (MFP) which prioritizes the work of Measure T.
- After a community input process, the large trees at the front of Vargas were removed due to damage caused to cars by falling pine cones and the danger they posed to people.
- Prior to removing the trees, the Board explored building a carport using Measure T funds and the District paid to have the pinecones harvested.

Conceptual Plan Goals

- Replace trees along N. Whisman Rd
 - Exceeding 2:1 District Standard Ratio
- Improving campus greening
 - Providing optimal soil mass for trees and shrubs with native plant material
- Provide flexible, informal outdoor learning spaces
 - Utilizing natural materials (boulders, logs, stumps, etc)
 - Multi-Use of experiencing nature, recreation, play, therapy and learning
- Increasing inner campus tree canopy
- Supporting District goals of existing campus programs and curriculum

Public Feedback Recap

1/24/2023 VARGAS FEEDBACK MEETING

- Zoom Meeting, 4:30-5:30 pm
- Approximately 25 attendees. Including but not limited to:
 - Living Classroom
 - Green Spaces Mountain View
 - Parents
 - Trustee
 - District staff

GENERAL SUMMARY OF INPUT

- Living classroom space improvements
 - Need a minimum of 1000 SF of garden space
 - More wood planters for classroom instruction (8'x4'x15") and native habitat gardens
- Need green space resources
 - Fairy gardens / Imaginative play
 - Recycling/compost program
 - Planting areas at grade
 - Native planting/Pollinator gardens
- More large canopy shade trees are beneficial
 - Without fruit, large seeds, sap, etc.
 - At school frontage and within interior of the campus
- Partnering with City, Canopy, Living Classroom, Dark Sky, Green Schoolyards America, etc.

Additional Feedback

- Adding nature to sensory play & therapeutic proposed spaces
- Broad canopy trees for maximum shade & carbon sequestration
- Irrigation updates and training
- Protecting and relocating donated buddy bench that's currently north of YMCA portables/classrooms
- Diverse and native trees and shrub selections
 - For seasonal color
 - Deciduous vs evergreen
 - Supportive of native habitat instruction
 - Shade and Beauty

Site Visit Input & Observations

- Four square is most popular hardcourt play
 - Hopscotch areas not used
 - Acceptable to relocate four square to EVA lane areas for optimizing greening opportunities to inner courtyard
 - Wall ball, dropshot basketball and varied play striping desired
- Fenced kinder lunch tables may be relocated under solar canopy to expand greening and outdoor learning opportunities, such as living classroom space
 - Fencing can also be adjusted as needed
- Play structure areas are highly used - for active and passive play
- Opportunities for for greening at parking lot and perimeter along N. Whisman Rd



Mountain View
Whisman
School District

Schematic Design Drawings

Last Conceptual Plan (dated 1.12.2023)

OUTDOOR LEARNING & GREENING LEGEND

- 1 OUTDOOR GATHERING AREA WITH STUMP AND LOG SEATING
- 2 SENSORY WALL AND THERAPY AREA
- 3 NATURAL/SHADED SEATING AREA WITH BASALT BENCHES
- 4 RAISED PLANTERS WITH VINE TRELLIS SCREEN AND BENCHES
- 5 TEACHING AREA UNDER EXISTING SOLAR ARRAY WITH MOVABLE TEACHING WALLS
- 6 SENSORY PATH
- 7 ENTRY GATEWAY PLANTING
- 8 NEW NATIVE TREES (62)
- 9 NEW PLANTING AREAS WITH NATIVE PLANTS AND POLLINATOR HABITAT
- 10 PAINTED ASPHALT AND GAME STRIPING
- 11 SCREEN PLANTING



Updated SD Plan

OUTDOOR LEARNING & GREENING LEGEND

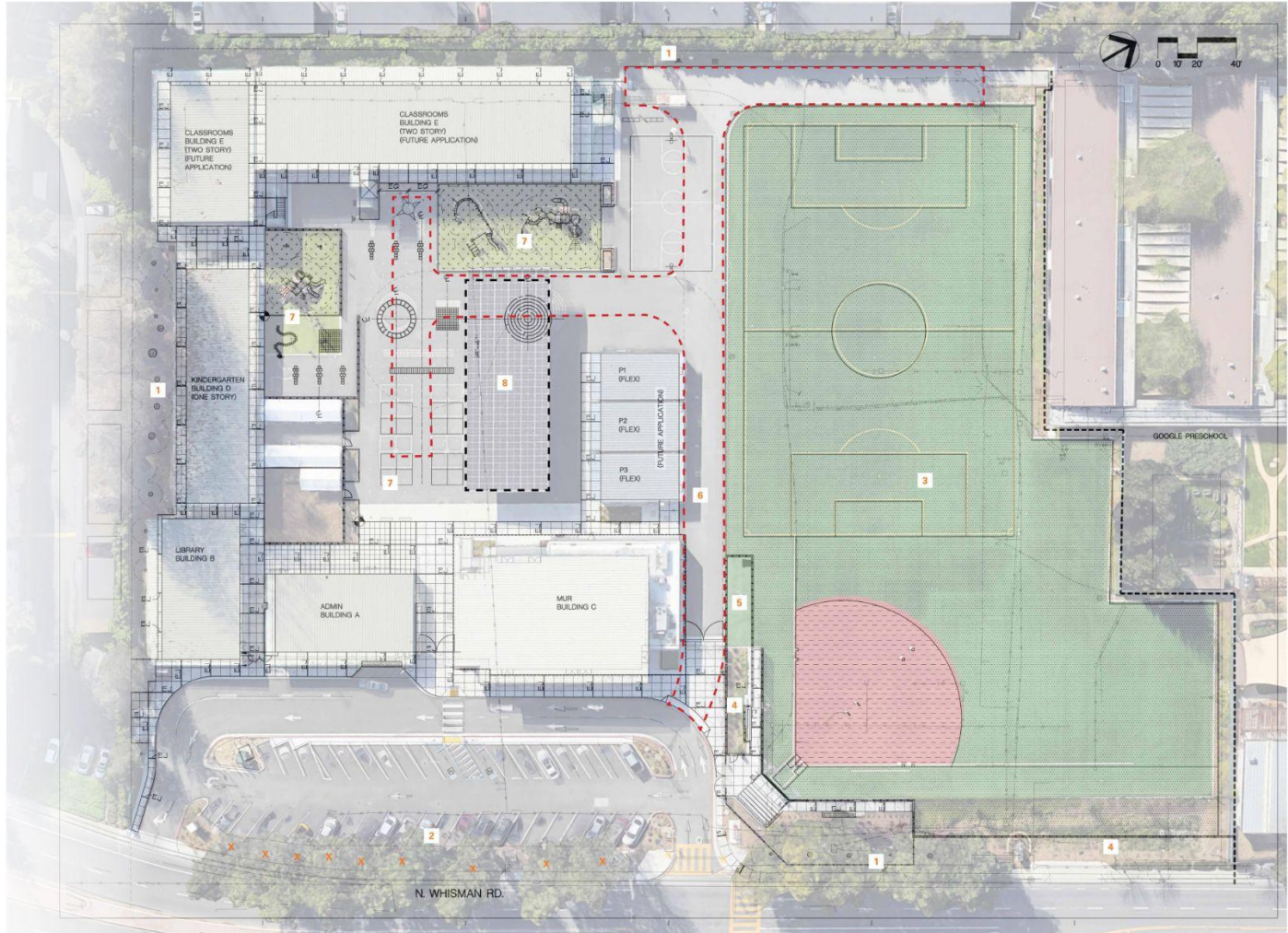
- 1 LEARNING GARDEN WITH RAISED BEDS, SEATING, DECOMPOSED GRANITE AND NATIVE PLANTING AREAS (2000SF)
- 2 SENSORY WALL AND THERAPY AREA
- 3 NATURAL/SHADED SEATING AREA WITH BASALT BENCHES
- 4 RAISED PLANTERS WITH VINE TRELLIS SCREEN AND BENCHES
- 5 EXISTING SEATING AREA UNDER SOLAR ARRAY
- 6 SENSORY PATH
- 7 DECOMPOSED GRANITE PATHS
- 8 NEW NATIVE TREES (60+)
- 9 REDWOOD GROVES WITH SEATING, BERMS, AND FLAGSTONE PATHS
- 10 PAINTED ASPHALT AND GAME STRIPING
- 11 SCREEN PLANTING ALONG N. WHISMAN
- 12 NATIVE TREES IN MOUNDED LANDSCAPE ALONG N. WHISMAN
- 13 RELOCATED FOUR SQUARE COURTS
- 14 BALL WALL
- 15 TRIPLE DROP SHOT COURT



Existing Conditions and Constraints

VARGAS ELEMENTARY EXISTING CONDITIONS

- 1 EXISTING TREES TO REMAIN
- 2 EXISTING TREES TO BE REPLACED (9)
- 3 EXISTING TURF FIELD
- 4 EXISTING PLANTED BIOTREATMENT AREA
- 5 EXISTING STORAGE SHED
- 6 EMERGENCY VEHICLE ACCESS LANE - DO NOT OBSTRUCT
- 7 EXISTING PLAY AREAS - DO NOT REDUCE
- 8 EXISTING SOLAR ARRAY - DO NOT SHADE



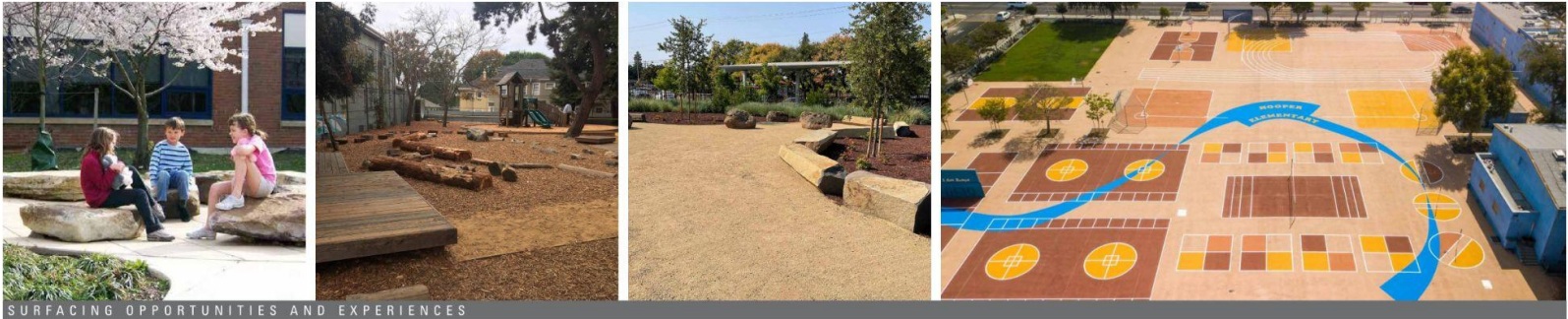
Tree Canopy and Counts

OUTDOOR LEARNING & GREENING LEGEND - CANOPY & DIVERSITY

-  ACER MACROPHYLLUM/BIGLEAF MAPLE (75' CANOPY) - QTY:7
-  SEQUOIA SEMPERVIRENS/COAST REDWOOD (45' CANOPY) - QTY:24
-  ARCTOSTAPHYLOS DR. HURD/DR. HURD MANZANITA (15' CANOPY) - QTY:15
-  CEANOTHUS RAY HARTMAN/TREE LILAC (15' CANOPY) - QTY:15
-  CERCIS OCCIDENTALIS/WESTERN REDBUO (15' CANOPY) - QTY:9
-  LYONOTHAMNUS FLORIBUNDUS SUBSP. ASPLENIIFOLIUS/CATALINA IRONWOOD (20' CANOPY) - QTY:7
-  QUERCUS AGRIFOLIA /COAST LIVE OAK (60' CANOPY) - QTY:6
-  CHILITALPA TASHKENTENSIS 'PINK DAWN' (25' CANOPY) - QTY:5
-  QUERCUS SUBER/ CORK OAK (70' CANOPY) - QTY:4
-  TOTAL TREE COUNTS: 92



SD Image Board



Mountain View Whisman School District

SD Image Board



PLANTERS AND FURNISHINGS



SENSORY WALL AND THERAPEUTIC SPACES



HARDCOURT PLAY

Mountain View Whisman School District

SD Image Board



NATIVE TREES



NATIVE SHRUBS

NON-NATIVE TREE OPTIONS



NATIVE POLLINATOR AND HABITAT GARDENS



Mountain View
Whisman
School District

Budget

Schematic Design Budget

Description	Quantity	Unit Cost	Subtotal
Anticipated Bid Amount			\$ 452,812

Project Cost

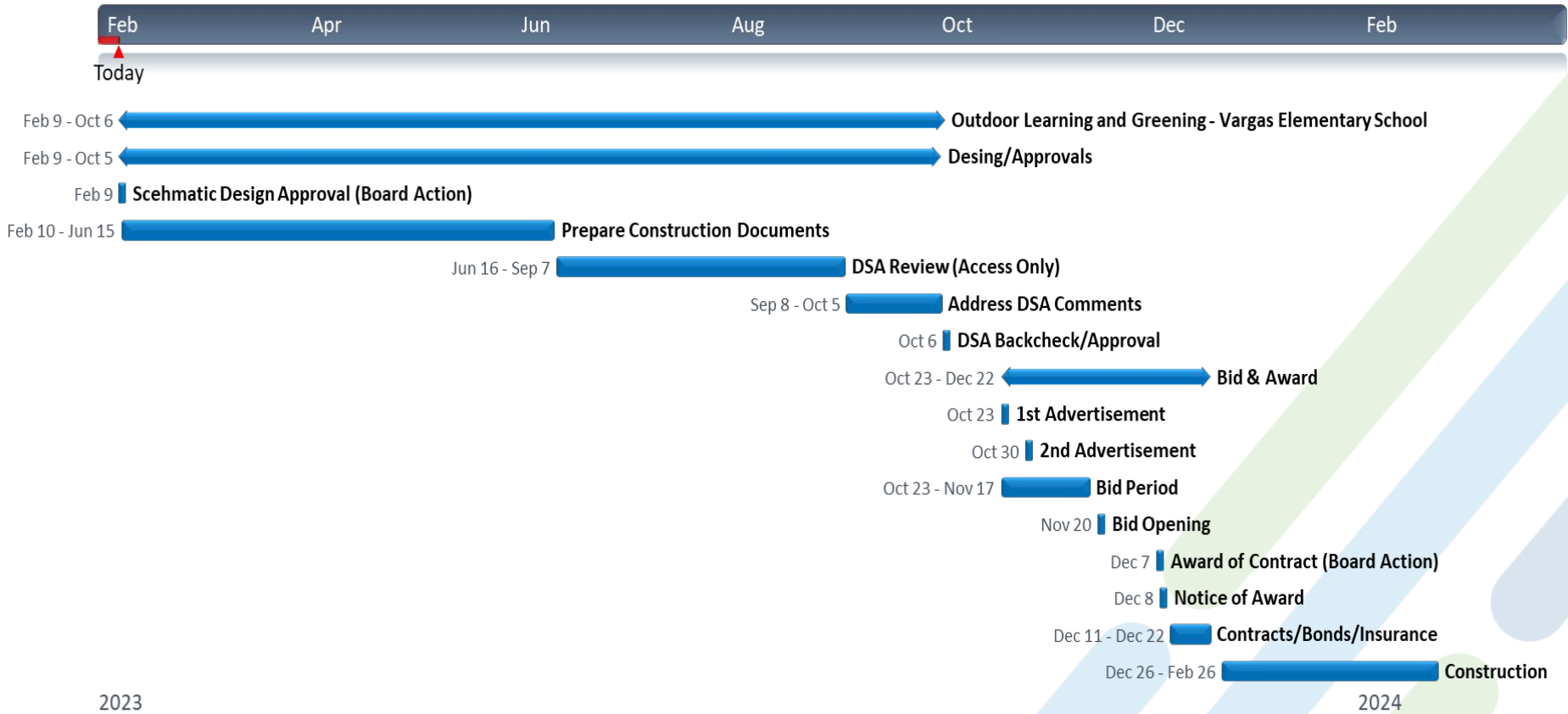
Description	Quantity	Unit Cost	Subtotal
Construction Budget	1 ls	\$	452,812
Design Contingency	10 %	\$	45,281
Construction Contingency	10 %	\$	45,281
Architect Fees	1 ls	\$	40,395
Architect Contingency	1 ls	\$	9,056
Architect Reimbursable Expenses	1 ls	\$	2,020
Blueprinting	1 ls	\$	2,500
Topographic Survey	1 ls	\$ 25,000	\$ 25,000
PM/CM Fees	4.5 %	\$	22,414
DSA Inspector	1 mos.	\$ 15,000	\$ 15,000
Bid Advertisements	1 ls	\$	2,500
DSA Fees	1.2 %	\$ 543,374	\$ 6,520
CEQA	1 ls	\$ 1,500	\$ 1,500
Legal	1 ls	\$ 5,000	\$ 5,000
Misc. Expenses	1 ls	\$ 10,000	\$ 10,000
Grand Total			\$ 685,280



Mountain View
Whisman
School District

Schedule

Schematic Design Schedule





Mountain View
Whisman
School District

Questions