



Mountain View  
Whisman  
School District

# Vargas Greening and Outdoor Learning

January 12, 2023

# Guiding Principles

# Strategic Plan 2027

## Goal Area 5

- Equitable distribution of resources that support student success.
- Goal 5a: Ensure facilities and resources equitably serve all students.

# Master Facility Plan

- In December of 2019, the Board approved the Master Facilities Plan (MFP) which prioritizes the work of Measure T.
- After a community input process, the large trees at the front of Vargas were removed due to damage caused to cars by falling pine cones and the danger they posed to people.
- Prior to removing the trees, the Board explored building a carport using Measure T funds and the District paid to have the pinecones harvested.

# Previous Requests for Greening

- Native, drought resistant trees.
- Include as many trees as possible throughout the campus.
- Include additional greenery on the campus to reduce the heat island effect produced by the large amount of asphalt
- Provide comfortable places for students and staff to be outside.
- Explore a partnership with Canopy to provide education to students.

# Further Background

- 9 trees were removed and the the District is proposing to plant 62 new native trees.
  - This is over the 2:1 District standard for replacement.
- Not everyone will be happy.
  - We need to balance the schools needs and community needs.



Mountain View  
Whisman  
School District

# Design

# Design Considerations

The design was a technical exercise due to the limitations of the site which include:

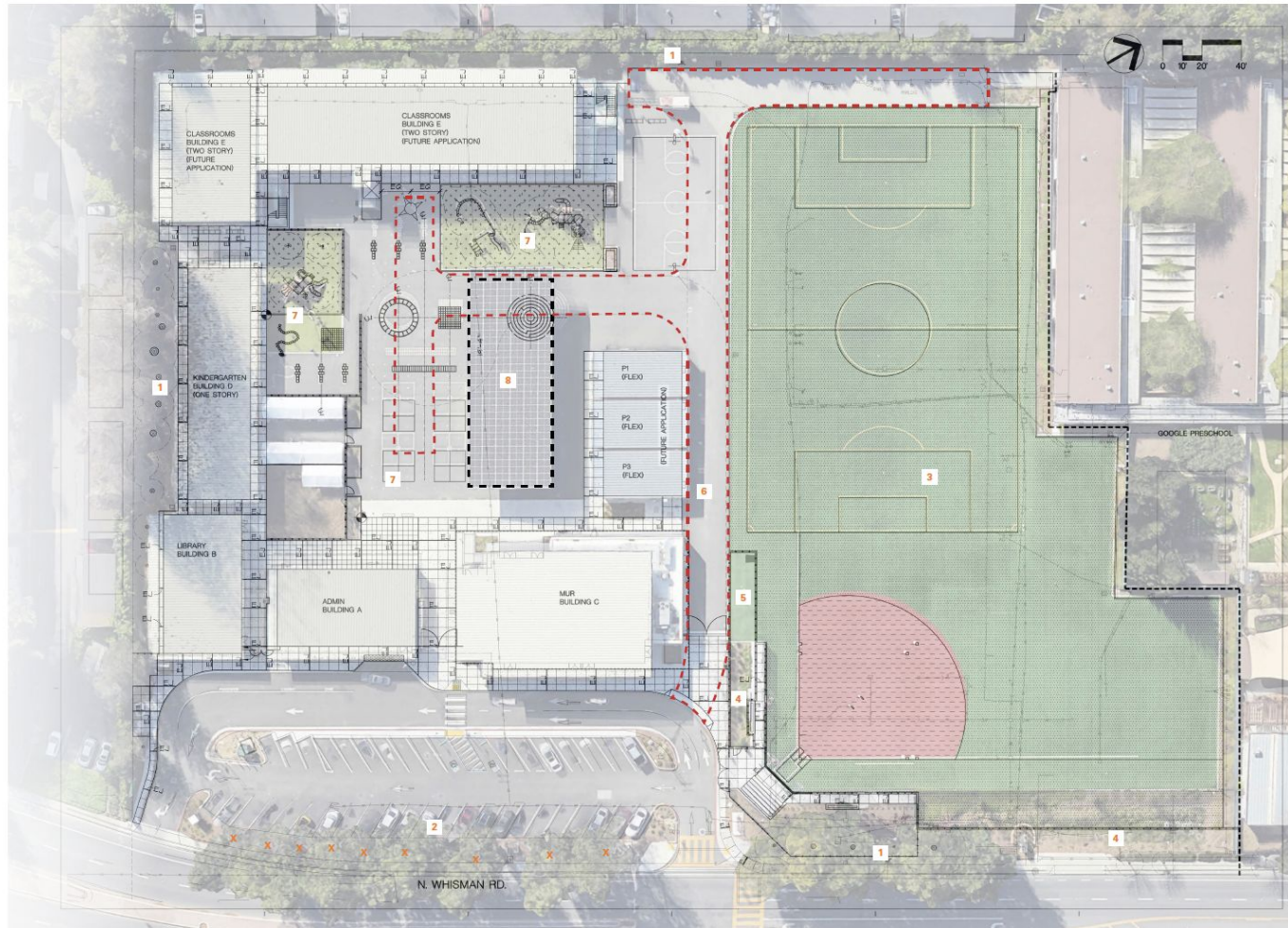
- Emergency vehicle access
- Shading of solar
- Underground utilities
- The need for blacktop playspace for students
- Existing biotreatment area that is planted
- Looked at lessons learned from other sites



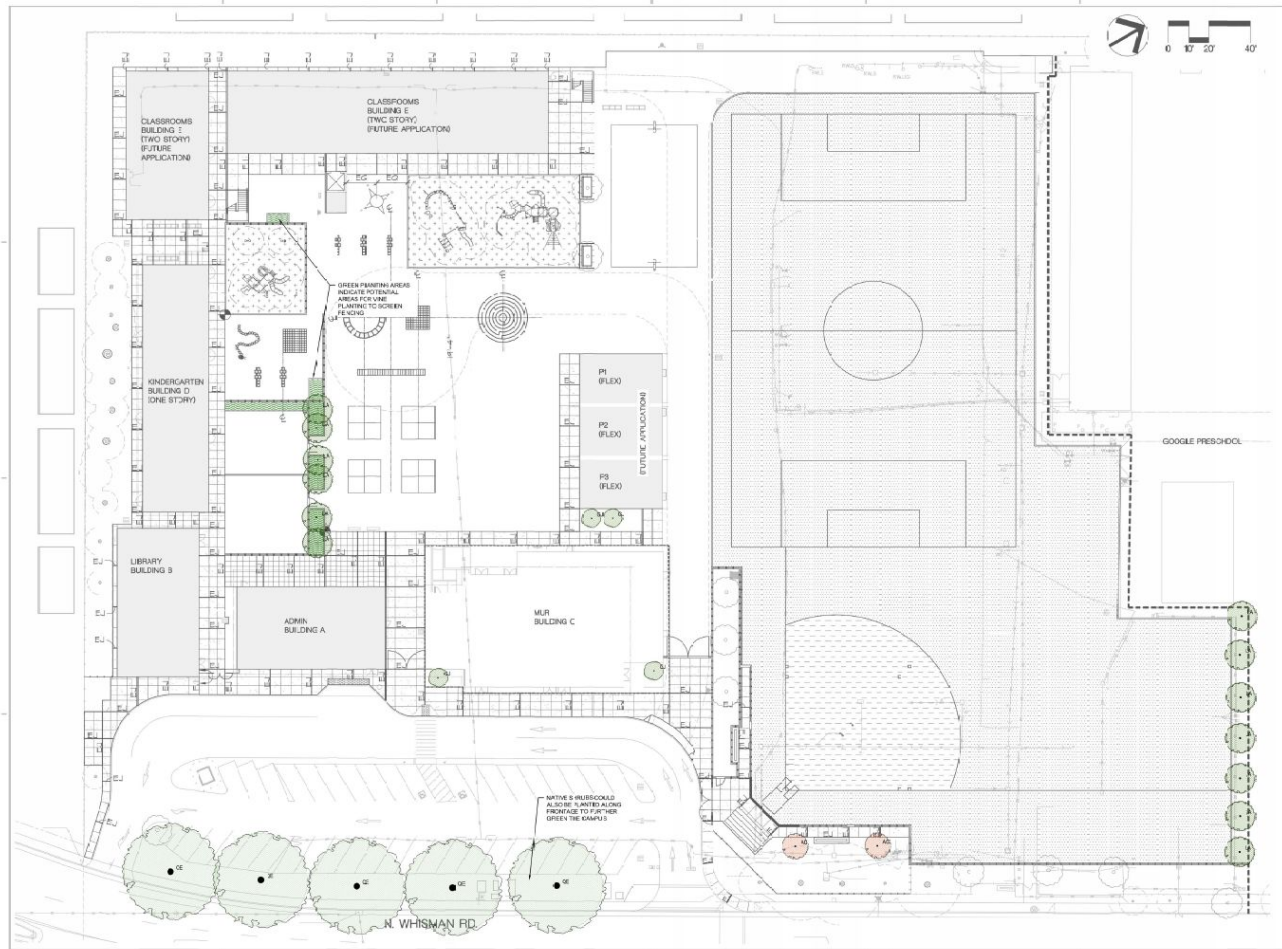
# Design Limitations Considerations

## VARGAS ELEMENTARY EXISTING CONDITIONS

- 1 EXISTING TREES TO REMAIN
- 2 EXISTING TREES TO BE REPLACED (9)
- 3 EXISTING TURF FIELD
- 4 EXISTING PLANTED BIOTREATMENT AREA
- 5 EXISTING STORAGE SHED
- 6 EMERGENCY VEHICLE ACCESS LANE - DO NOT OBSTRUCT
- 7 EXISTING PLAY AREAS - DO NOT REDUCE
- 8 EXISTING SOLAR ARRAY - DO NOT SHADE



# First Conceptual Drawing



JOSE ANTONIO VARGAS ELEMENTARY TREE REPLACEMENT  
MOUNTAIN VIEW, CALIFORNIA

SCHEMATIC TREE PLAN  
DECEMBER, 2022

CARDUCCI  
ASSOCIATES



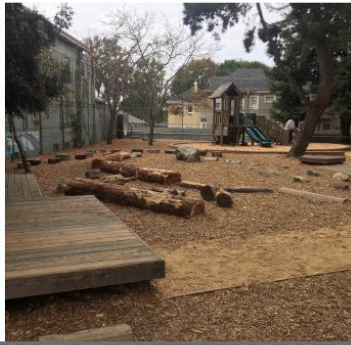
# Second Conceptual Drawing

**OUTDOOR LEARNING & GREENING LEGEND**

- 1 OUTDOOR GATHERING AREA WITH STUMP AND LOG SEATING
- 2 SENSORY WALL AND THERAPY AREA
- 3 NATURAL/SHADED SEATING AREA WITH BASALT BENCHES
- 4 RAISED PLANTERS WITH VINE TRELLIS SCREEN AND BENCHES
- 5 TEACHING AREA UNDER EXISTING SOLAR ARRAY WITH MOVABLE TEACHING WALLS
- 6 SENSORY PATH
- 7 ENTRY GATEWAY PLANTING
- 8 NEW NATIVE TREES (62)
- 9 NEW PLANTING AREAS WITH NATIVE PLANTS AND POLLINATOR HABITAT
- 10 PAINTED ASPHALT AND GAME STRIPING
- 11 SCREEN PLANTING







SURFACING OPPORTUNITIES AND EXPERIENCES



SEATING OPPORTUNITIES AND EXPERIENCES



SHADE OPPORTUNITIES AND EXPERIENCES

SENSORY WALL AND THERAPEUTIC SPACES

OUTDOOR LEARNING & GREENING  
VARGAS ELEMENTARY SCHOOL  
MOUNTAIN VIEW, CALIFORNIA

CONCEPT IMAGES  
JANUARY 12TH, 2023

CARDUCCI  
ASSOCIATES

3





PLANTERS AND FURNISHINGS



NATIVE TREES AND SHRUBS



NATIVE POLLINATOR AND HABITAT GARDENS

OUTDOOR LEARNING & GREENING  
 VARGAS ELEMENTARY SCHOOL  
 MOUNTAIN VIEW, CALIFORNIA

SITE FURNISHING & GREENING OPPORTUNITIES  
 JANUARY 12TH, 2023

CARDUCCI  
 ASSOCIATES 4

# Canopy

- Canopy has offered to provide a one hour assembly for students in K-3 and a one hour community event for \$5,000.
- Canopy's goal would be to have participants walk away with a renewed excitement for trees and more knowledge about trees.



Mountain View  
Whisman  
School District

# Questions



# Questions

- Staff recommends that we align Canopy's education with planting, however we have a couple of questions that we need direction on?
  - What is the Board's expectation for Canopy's involvement?
  - To reduce costs, does the Board feel that it is ok with the possibility of moving forward if the children's education cannot be scheduled prior to planting season schedule?
  - Is it the Board's expectation that the education sessions in conjunction with planting?
  - Does the Board want staff to green all other campuses?





Mountain View  
Whisman  
School District

# Next Steps

# Next Steps

- Show parents and the community the plan.
  - Meeting will take place January 24
- Bring it back for final Board approval on the February 9 meeting with
  - Timeline that is aligned with planting season.
  - Estimate of projected cost \$599,749