



Mountain View  
Whisman  
School District

# Enrollment and Staffing Update

October 2023



# Alignment to Strategic Plan

## Goal 1:

- Effective and consistent instructional practices that meet the needs of all students

## Goal 4:

- Effective and engaged employees

## Board of Trustees Goal:

- Place all students at their neighborhood schools

# Enrollment Update

- Enrollment determines number of teachers at each site:
  - Staffing Ratio: schoolwide *averages* in the following grades Kindergarten through 3<sup>rd</sup> grades: 24:1
  - 4th and 5th grades: 30:1
  - 6th, 7th and 8th grades: 180 contacts per day or 33 in any one core class period
- Students do not come in “groups of 24”
- Students don’t come only in August

# Enrollment Update

- Things we have considered:
  - Concerns about 4th/5th grade classes with overloads
  - Students come throughout the year with particular increases in December and April
  - We have increased supports at multiple sites (newcomer teachers, Literacy team, additional staff to lower elective class sizes)
  - TK age continues to adjust

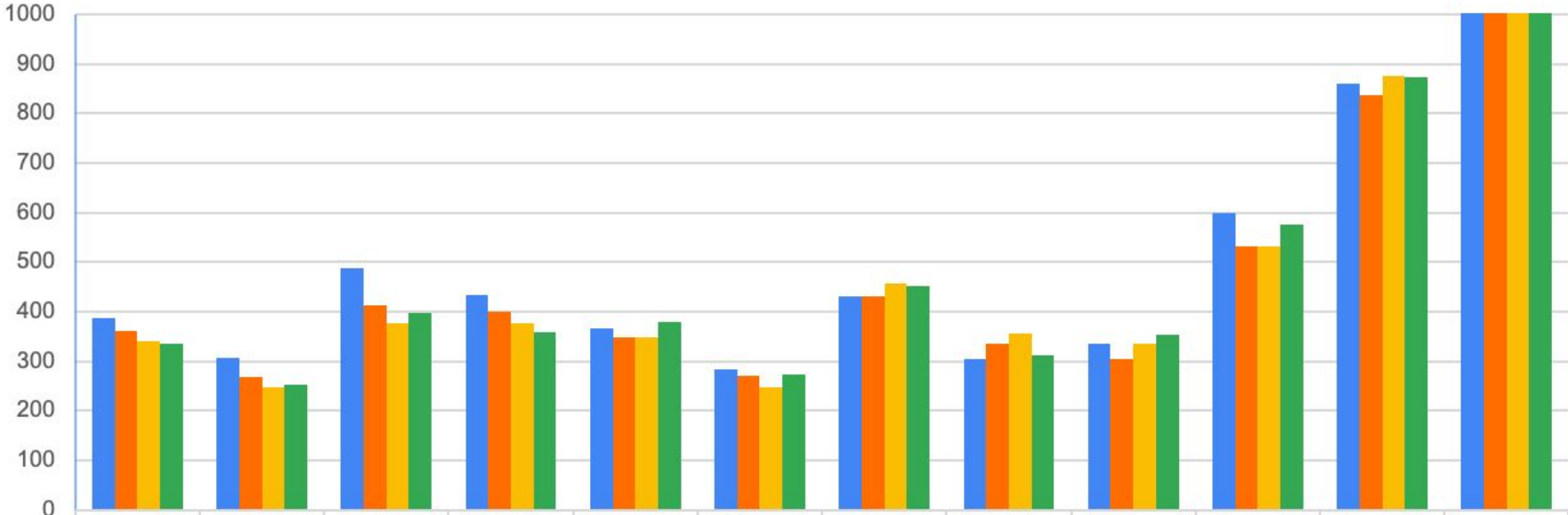


Mountain View  
Whisman  
School District

# Enrollment Updates by School Site

*September 2020 to September 2023*

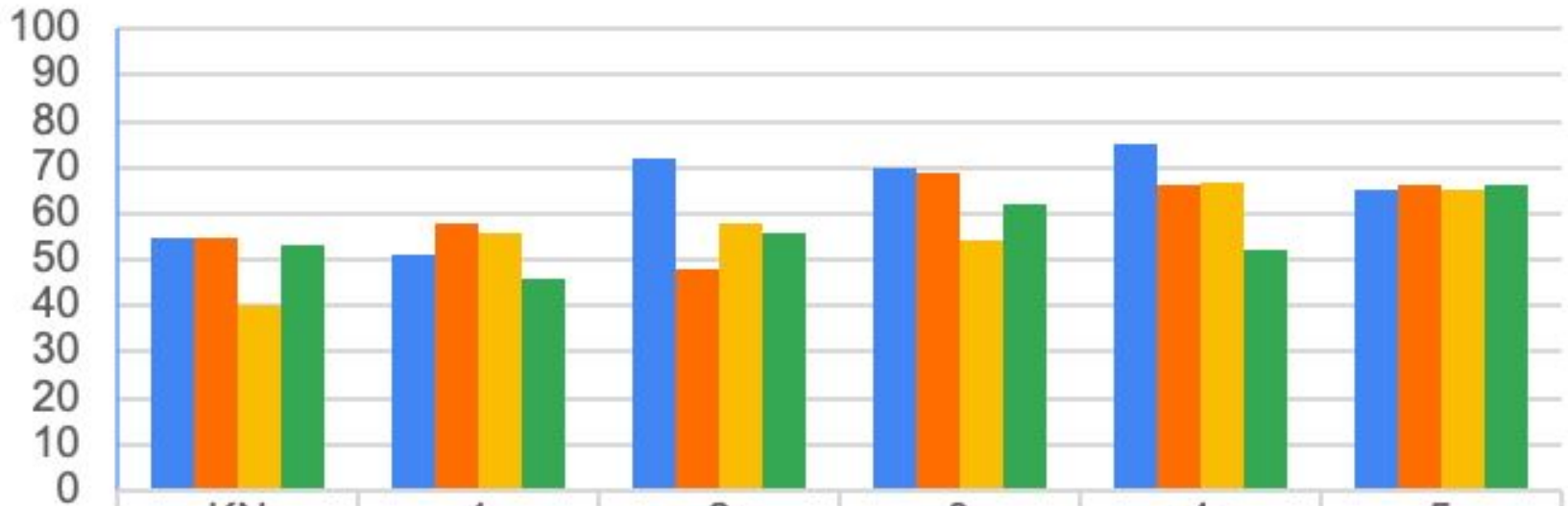
## Enrollment September 2020 - September 2023



	Bubb	Castro	Imai	Landels	Mistral	Monta Loma	Stevenson	Theuerkauf	Vargas	Crittenden	Graham	Districtwide
■ 2020	388	308	488	433	365	283	430	305	334	600	860	4894
■ 2021	362	268	413	399	347	271	432	336	304	531	838	4591
■ 2022	340	246	377	376	348	248	456	356	336	533	877	4493
■ 2023	335	252	397	359	379	274	452	313	352	576	872	4561

# Bubb Elementary

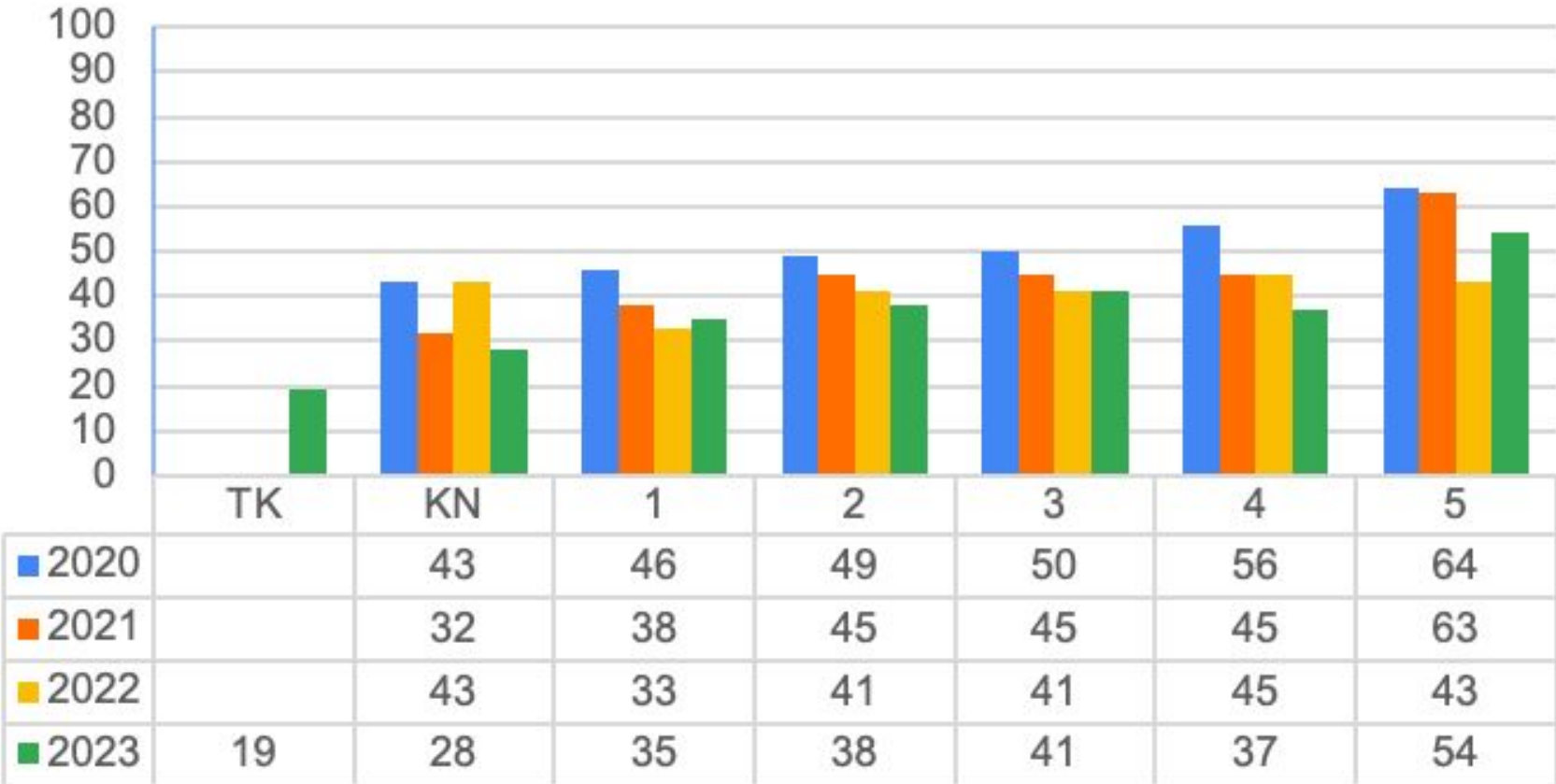
## September 2020 - September 2023



Enrollment includes students in general education classes as well as SAI classes

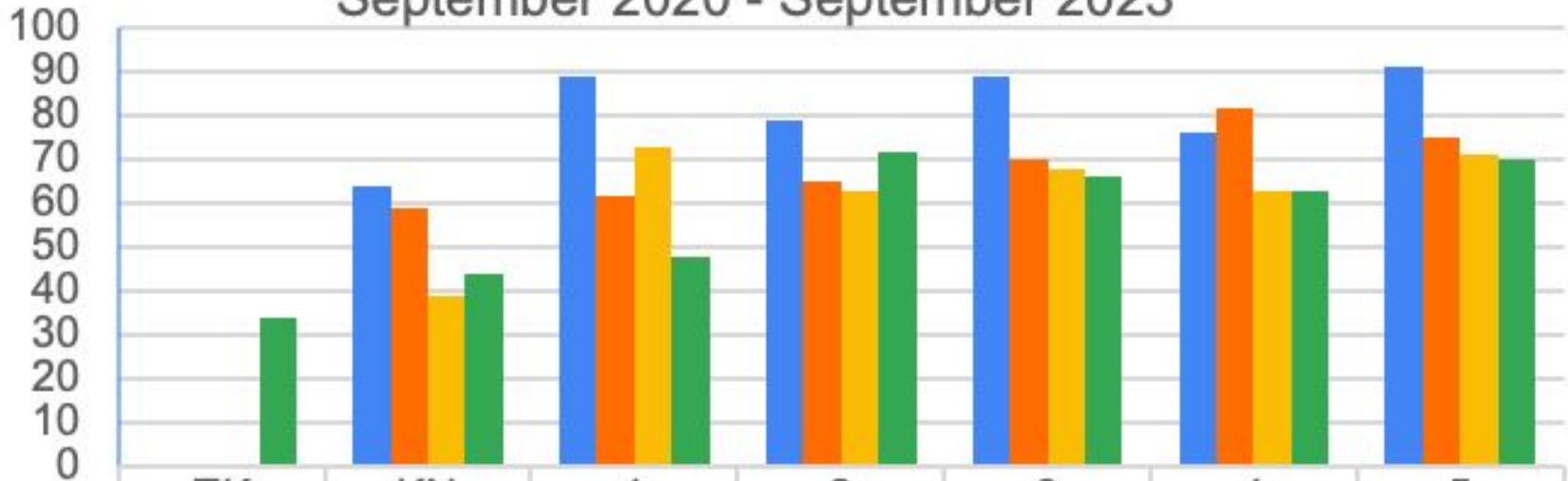
# Castro Elementary

## September 2020 - September 2023





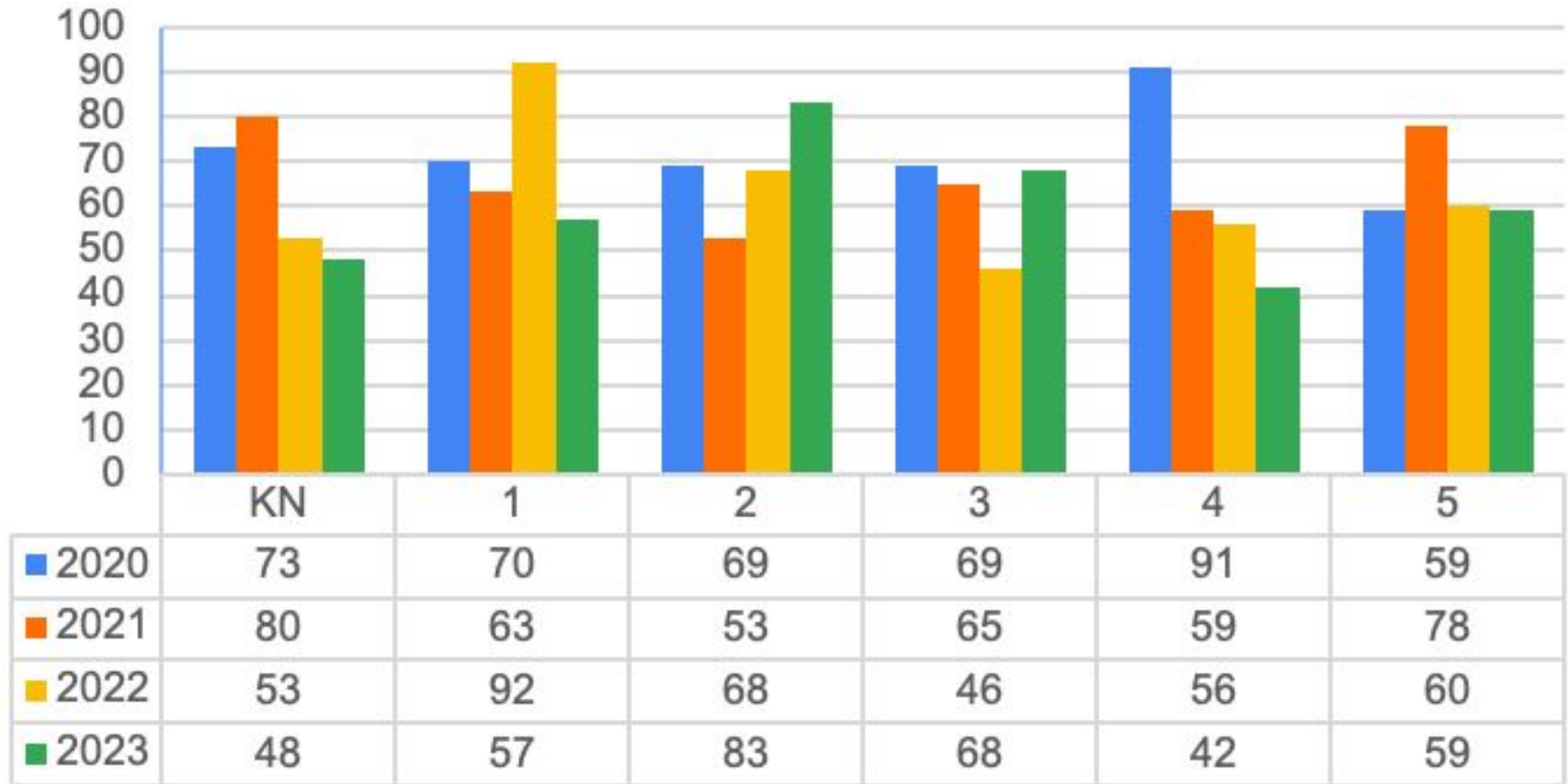
## Imai Elementary September 2020 - September 2023



	TK	KN	1	2	3	4	5
■ 2020		64	89	79	89	76	91
■ 2021		59	62	65	70	82	75
■ 2022		39	73	63	68	63	71
■ 2023	34	44	48	72	66	63	70

# Landels Elementary

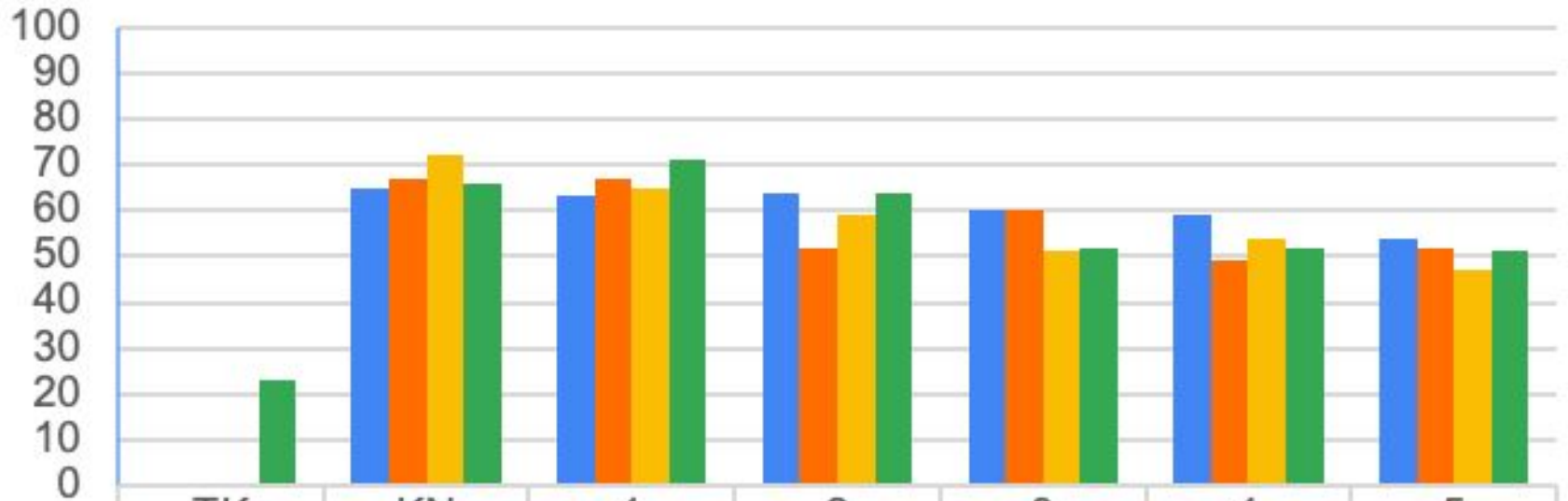
## September 2020 - September 2023



Enrollment includes K-5 students in general education classes as well as an SAI class.  
It does not include students in other grades.

# Mistral Elementary

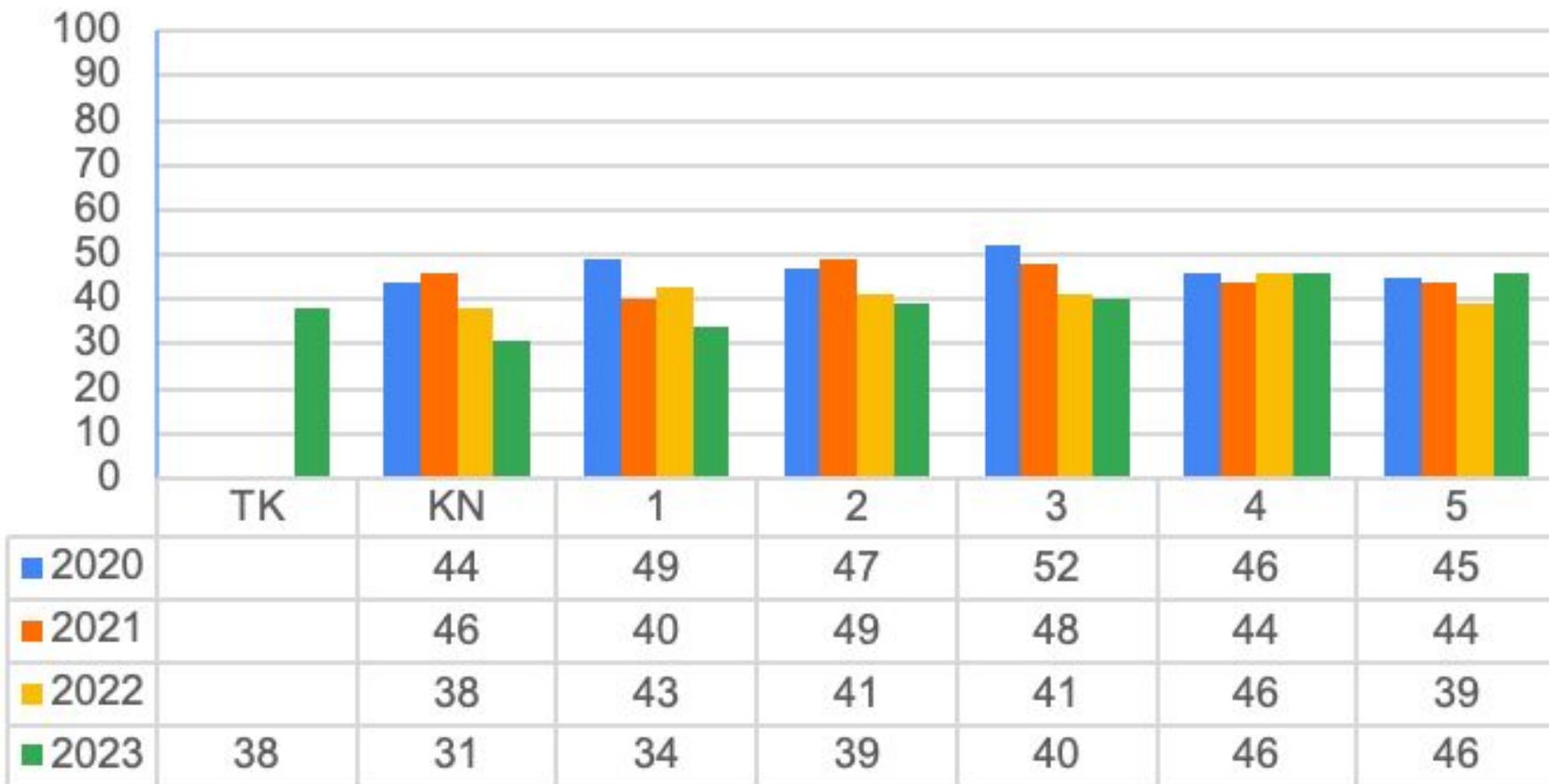
## September 2020 - September 2023



	TK	KN	1	2	3	4	5
■ 2020		65	63	64	60	59	54
■ 2021		67	67	52	60	49	52
■ 2022		72	65	59	51	54	47
■ 2023	23	66	71	64	52	52	51

# Monta Loma Elementary

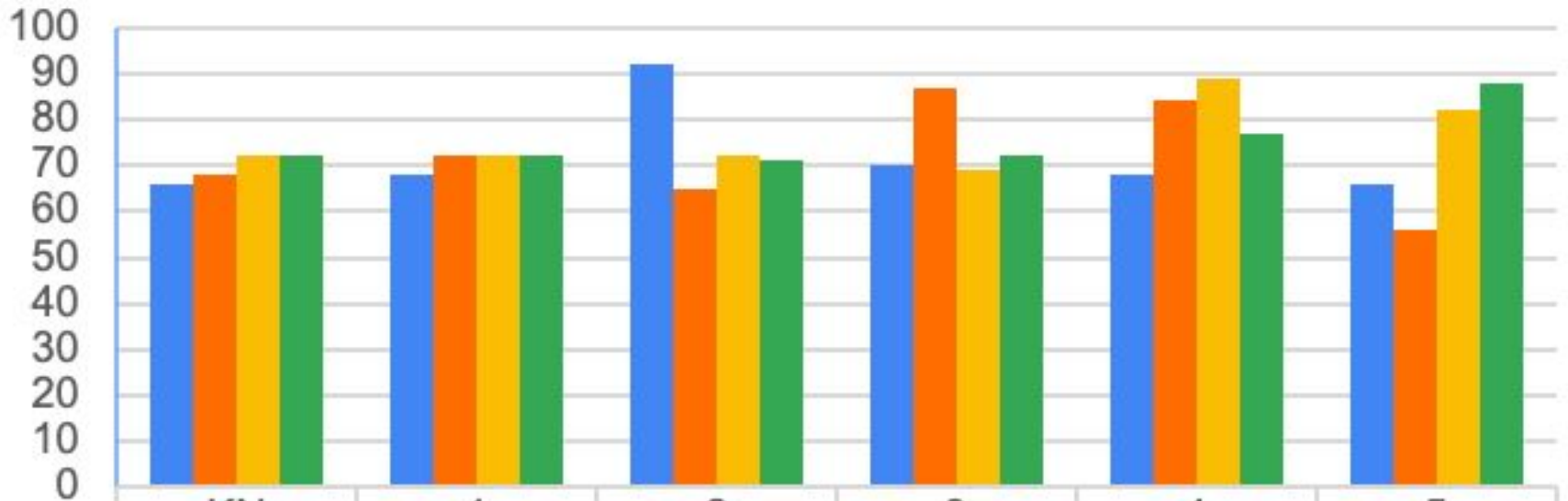
## September 2020 - September 2023



Enrollment includes students in general education classes as well as SAI classes  
 Mountain View Whisman School District

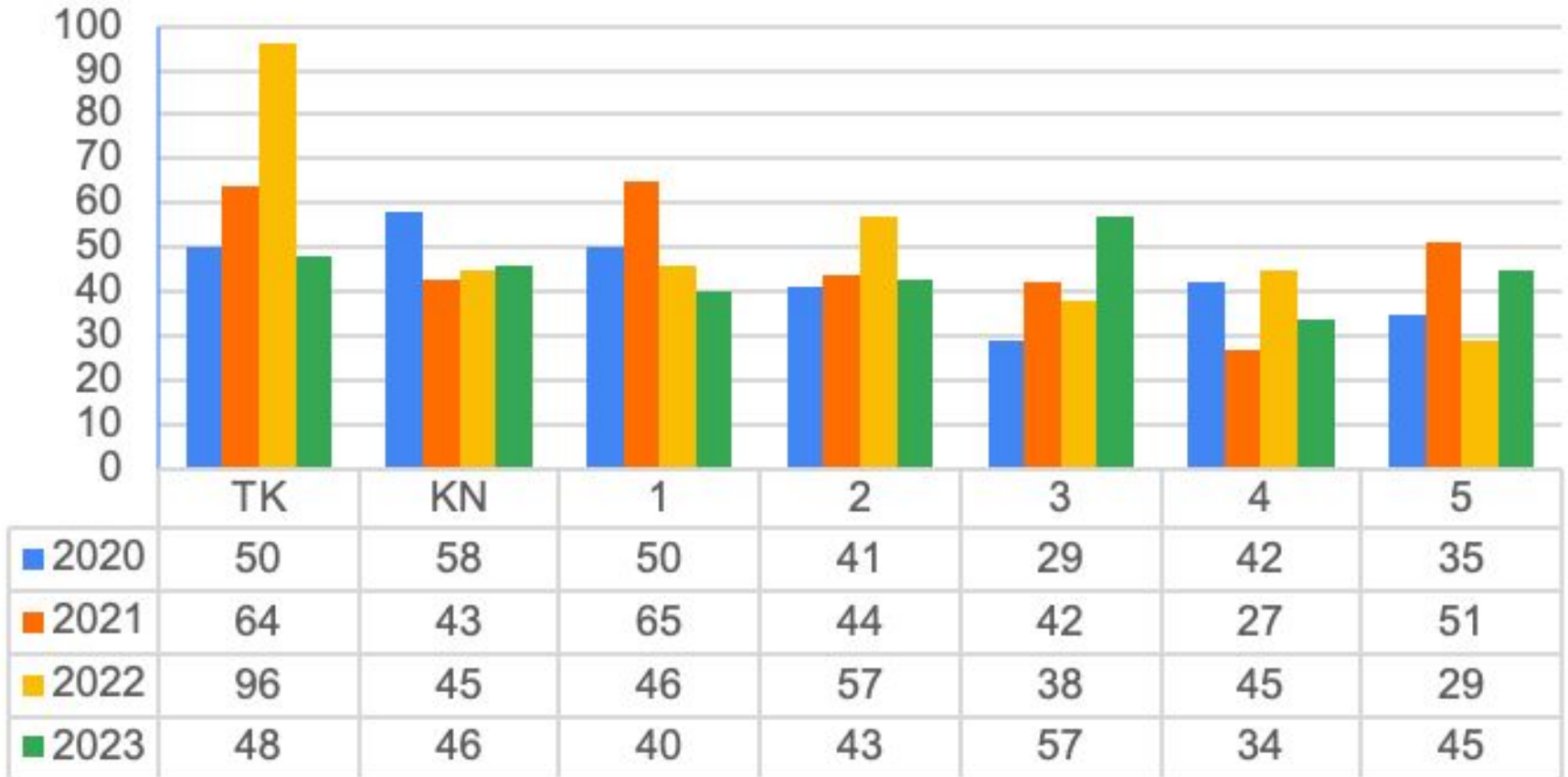
# Stevenson Elementary

## September 2020 - September 2023



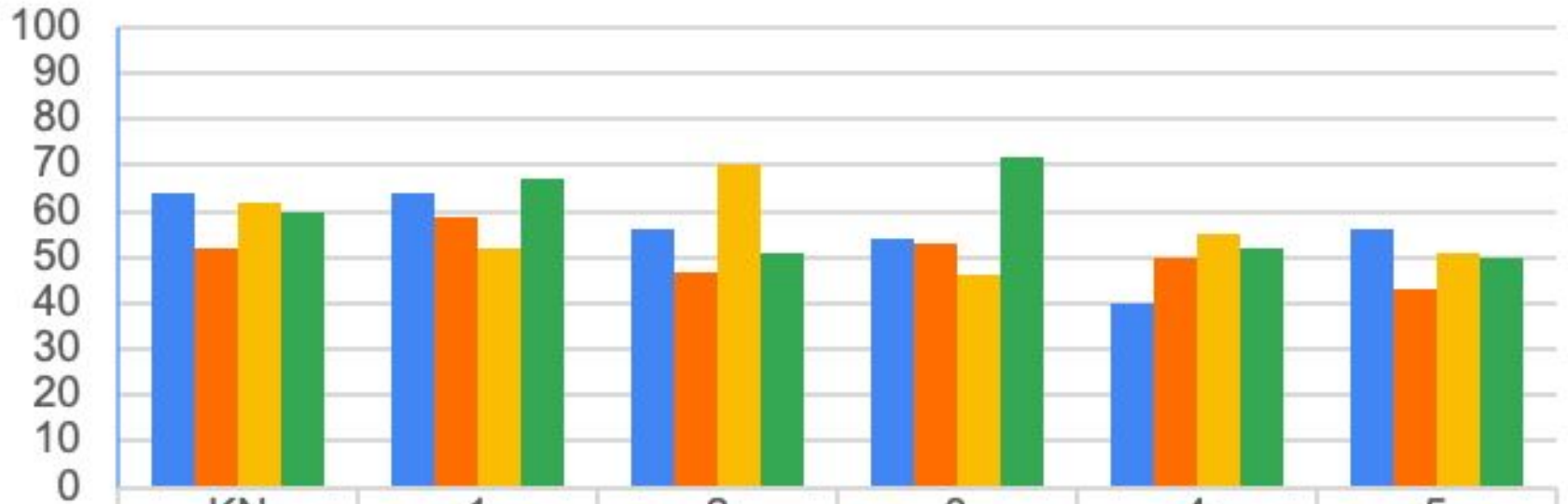
# Theuerkauf Elementary

## September 2020 - September 2023



# Vargas Elementary

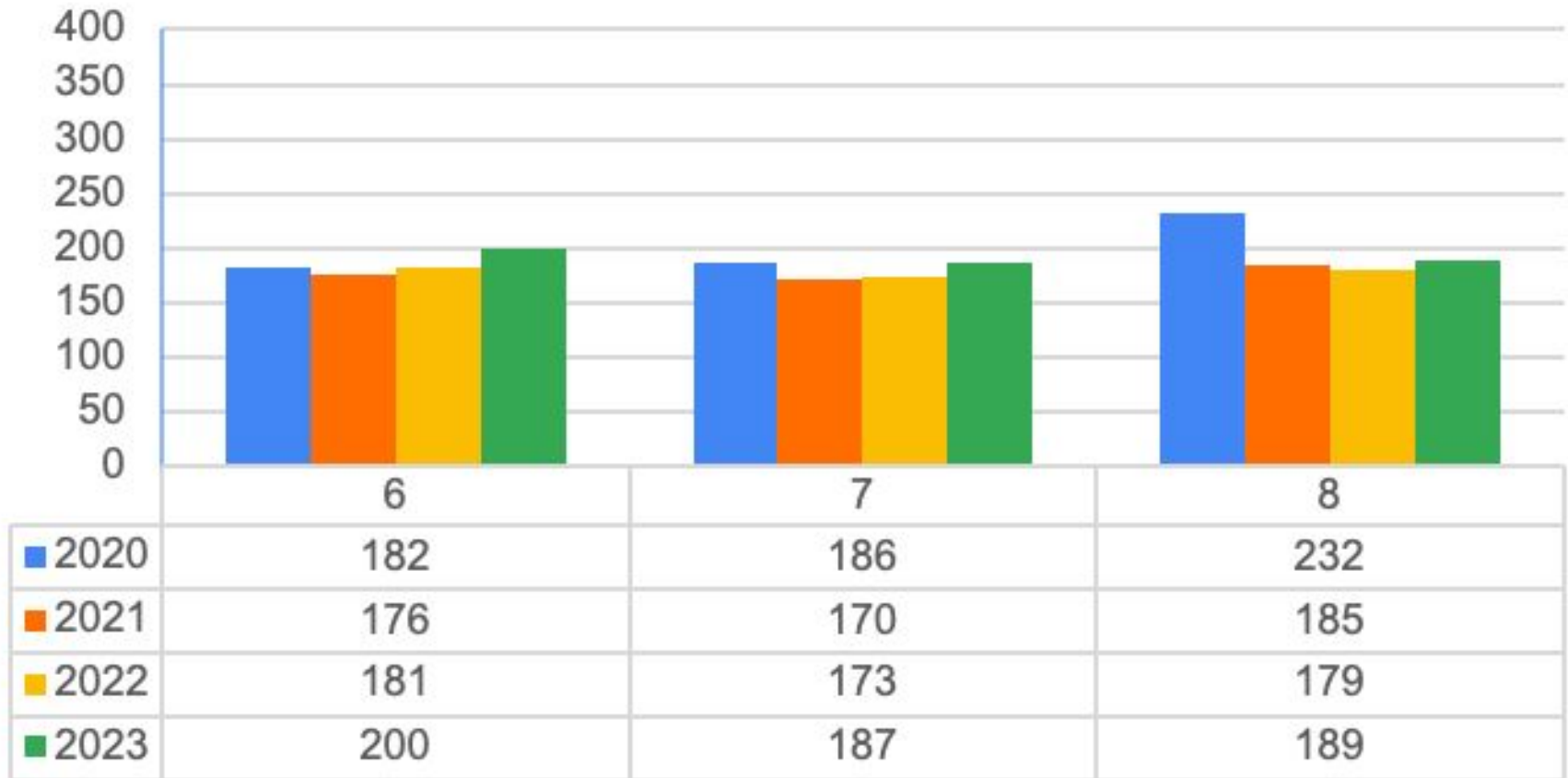
## September 2020 - September 2023





# Crittenten Middle School

## September 2020 - September 2023

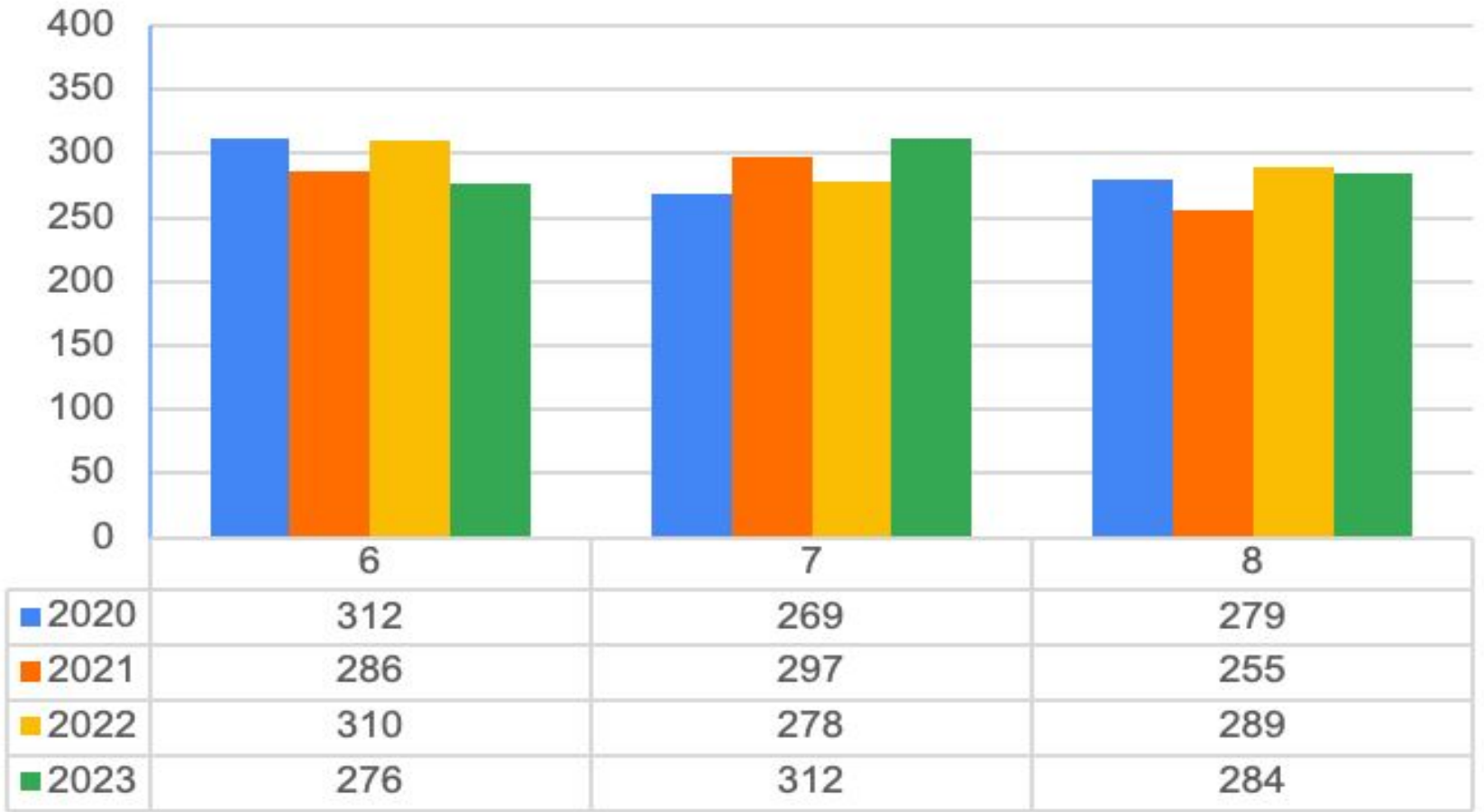


Enrollment includes students in general education classes as well as SAI classes



# Graham Middle School

## September 2020 - September 2023

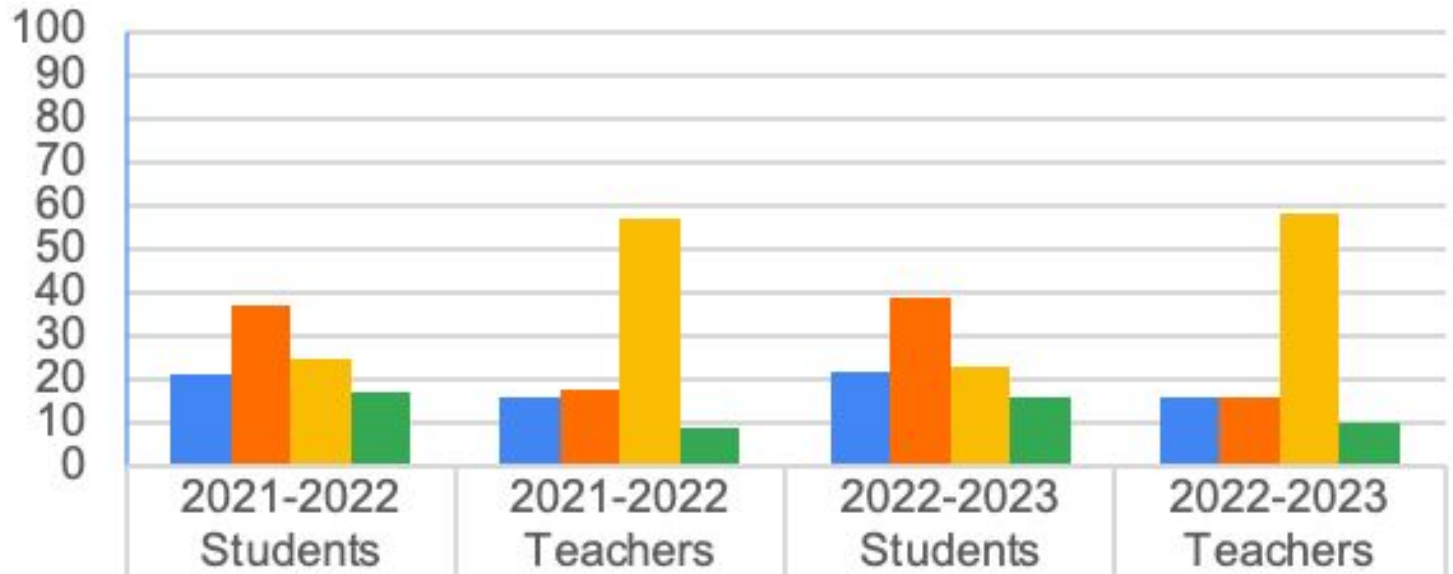


Enrollment includes students in general education classes as well as SAI classes

# Site Teaching Staff

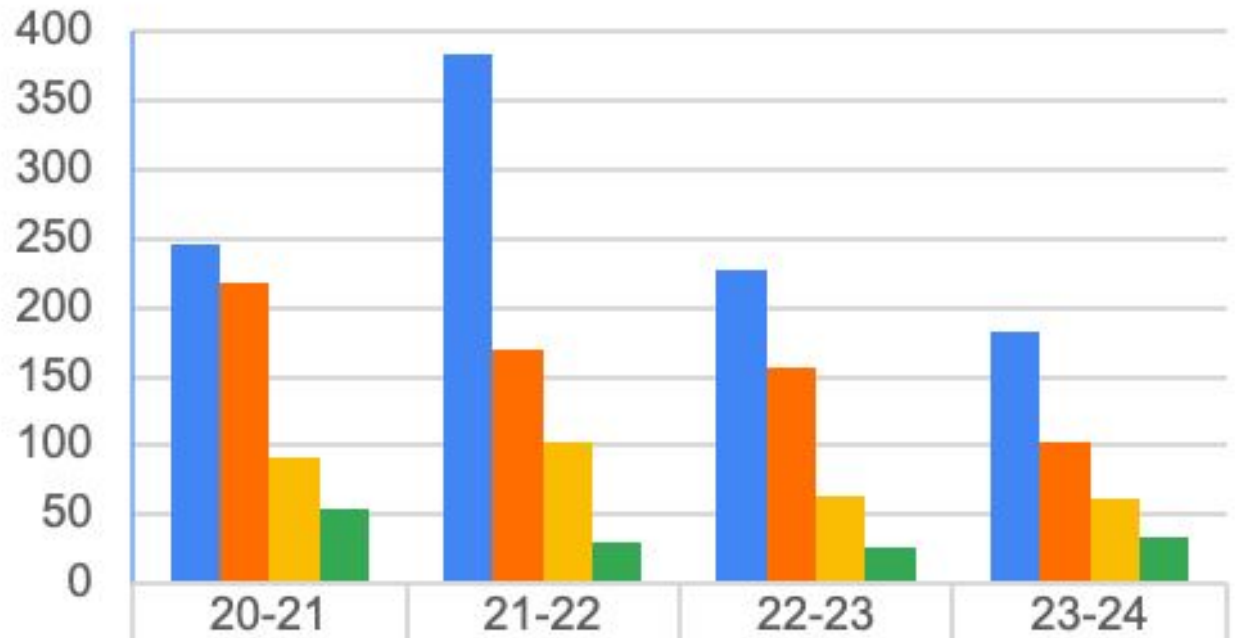
	2022 Students	2023 Students	2022 Classroom Teachers	2023 Classroom Teachers	2022 Special Education Teachers	2023 Special Education Teachers	2022 TOSAs	2023 TOSAs
Bubb Elementary	340	335	14	15	4	3	2	3
Castro Elementary	246	252	12	13	1	1	3	2
Amy Imai Elementary	377	397	16	19	1	3	3	3
Edith Landels Elementary	376	359	16	16	2	2	3	3
Gabriela Mistral Elementary	348	379	15	17	1	1	3	3
Monta Loma Elementary	248	274	12	14	3	3	2	2
Stevenson Elementary	456	452	18	18	1	1	3	3
Theuerkauf Elementary	356	313	17	16	1	1	2	2
Jose Antonio Vargas Elementary	336	352	15	17	1	1	3	3
Crittenden Middle	533	576	28	29	5	4	2	2
Isaac Newton Graham Middle	877	872	40	44	5	5	3	2
							2	9
	4493	4561	203	218	25	25	31	37

## Race/Ethnicity Students and Staff



■ Asian	21	16	22	16
■ Hispanic/Latino	37	18	39	16
■ White	25	57	23	58
■ Other	17	9	16	10

# Student Withdrawal Reasons



■ 160 (Another school in CA)	245	383	228	182
■ 180 (Private/Home school)	217	170	156	102
■ 200 (Out of State)	92	103	63	61
■ 240 (Out of Country)	55	30	27	33

# Staff Retention

	Total Teacher Retention	Retention of New Teachers
2020-21	86%	50%
2021-22	85%	46%
2022-23	87%	82%

# Staff Retention

Top five reasons that teachers leave

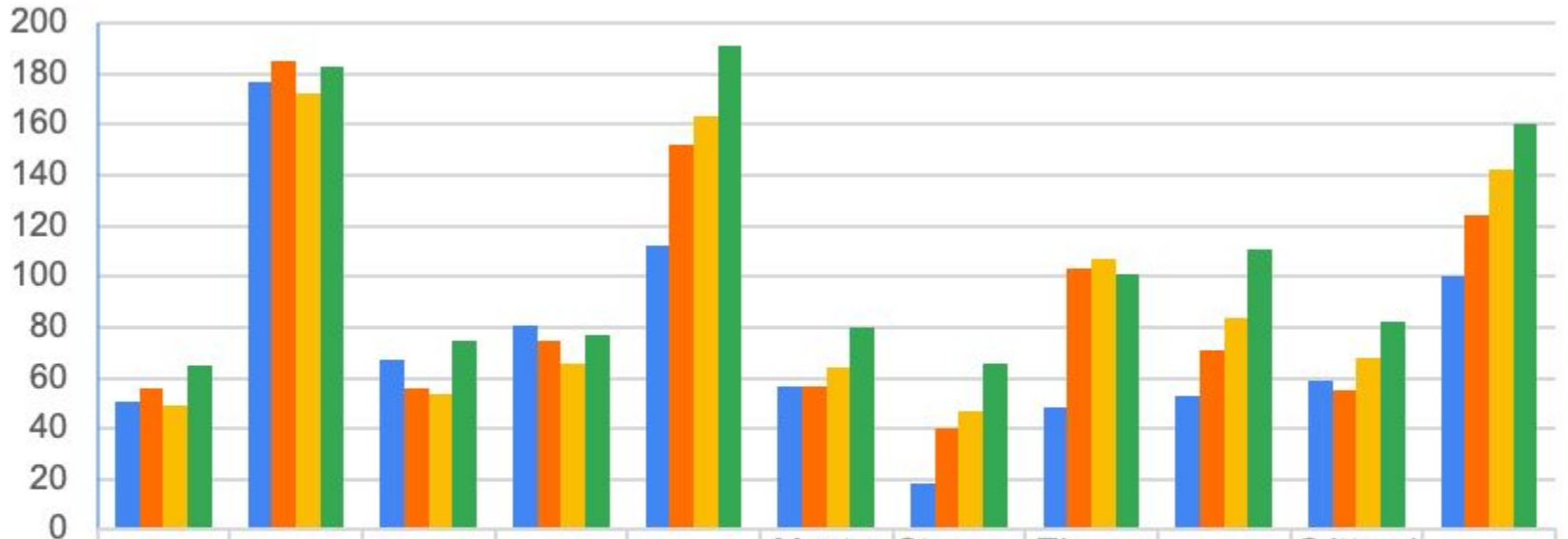
1. End of temp/prob assignment
2. Accepted a job in another district
3. Moved out of the area
4. Retirement
5. Health/Family



Mountain View  
Whisman  
School District

# Additional Data

# English Learners

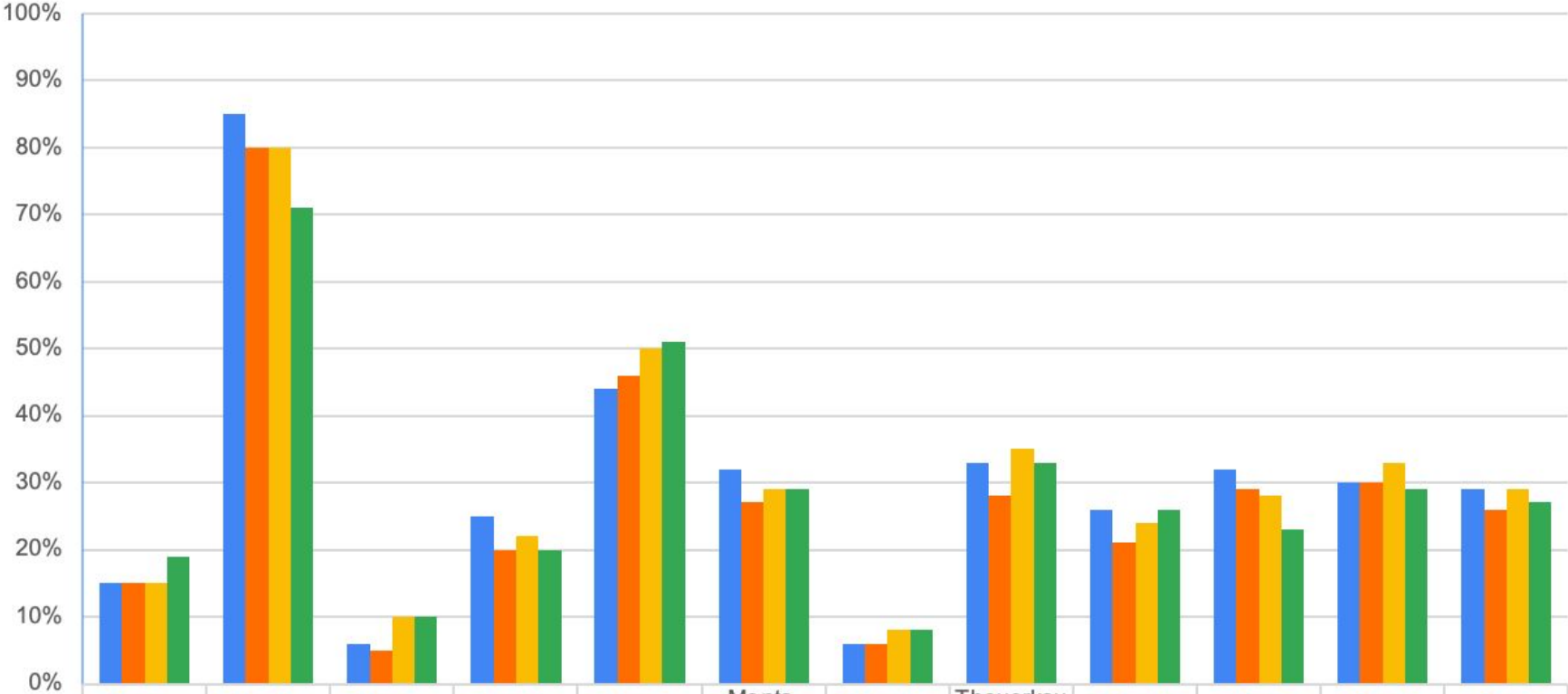


	Bubb	Castro	Imai	Landels	Mistral	Monta Loma	Stevens on	Theuer kauf	Vargas	Crittenden	Graham
2020-21	51	177	67	81	112	57	18	48	53	59	100
2021-22	56	185	56	75	152	57	40	103	71	55	124
2022-23	49	172	54	66	163	64	47	107	84	68	142
2023-24	65	183	75	77	191	80	66	101	111	82	160



# SocioEconomically Disadvantaged

September 2020 - September 2023



	Bubb	Castro	Imai	Landels	Mistral	Monta Loma	Stevenson	Theuerkautz	Vargas	Crittenden	Graham	District
■ 2020-21	15%	85%	6%	25%	44%	32%	6%	33%	26%	32%	30%	29%
■ 2021-22	15%	80%	5%	20%	46%	27%	6%	28%	21%	29%	30%	26%
■ 2022-23	15%	80%	10%	22%	50%	29%	8%	35%	24%	28%	33%	29%
■ 2023-24	19%	71%	10%	20%	51%	29%	8%	33%	26%	23%	29%	27%

# McKinney Vento Counts

McKinney Vento Counts	2020-2021	2021-2022	2022-2023	2023-2024
Bubb	*	*	*	13
Castro	60	53	43	50
Crittenden	20	19	23	19
Graham	31	38	61	62
Imai	*	*	*	*
Landels	10	10	19	17
Mistral	*	19	25	32
Monta Loma	*	*	11	12
Stevenson	*	*	*	*
Theuerkauf	12	12	17	11
Vargas	11	11	23	32



Mountain View  
Whisman  
School District

# Immunizations

# Immunizations

- California law requires children to be immunized.
  - Children are exempt from immunization requirements only if a parent or guardian submits a written statement from a licensed physician (M.D. or D.O.)
- Immunization requirements for admission to school in California for the 2023-2024 school year remain in place
- With a few specific exceptions, immunizations must be complete before students are able to attend class in person
- The Administrative Services team has worked with all families new to the district or entering grade 7 to ensure immunizations requirements were met prior to students attending
- As of September 11, only 4 students needed immunizations



Mountain View  
Whisman  
School District

# Hiring

# Staffing

- Additional staff have been hired this year
  - in anticipation of future enrollments
  - to support student needs
- The gap between student/staff demographics remains high
- This year, we recruited through several college campuses and participated in job fairs at UOP and SFSU
- We hosted job fairs at Stevenson
- We expanded our advertising through EdJoin
- We were proactive in outreach to applicants
- Teacher retention rates have continued to improve
- We welcomed new staff with a new teacher meet and greet at the end of May
- A new onboarding system was implemented this year
- Special Education positions continue to be the most challenging to fill



Mountain View  
Whisman  
School District

# Summary

# Summary

- Enrollment has continued to be reasonably flat
  - Theuerkauf has seen a decrease in TK due to the expansion of TK to other sites but an increase in neighborhood students
  - Castro, Imai, Mistral, Monta Loma have increased enrollment due to the addition of TK classes on site
  - Choice Schools remain consistent
- Middle School enrollment remains reasonably flat this year
- Withdrawal reasons are fairly consistent with years past
- The number of English Learners has increased throughout the district
- The number of SocioEconomically Disadvantaged students has declined in some areas, but students in need remain fairly consistent



# Next Steps

- Continue to plan for further TK expansion
- Continue making adjustments to the enrollment process to streamline and support families, staffing, budgeting, and teacher assignments
- Vaccination clinics will be provided to support families in completing vaccination prior to the first day of school
- Further expand recruitment efforts
- Review and analyze staff survey results to determine staff needs