



Mountain View  
Whisman  
School District

# Paving Phase 3 Project Landels Elementary School

September 21, 2023



Mountain View  
Whisman  
School District

# Scope of Work

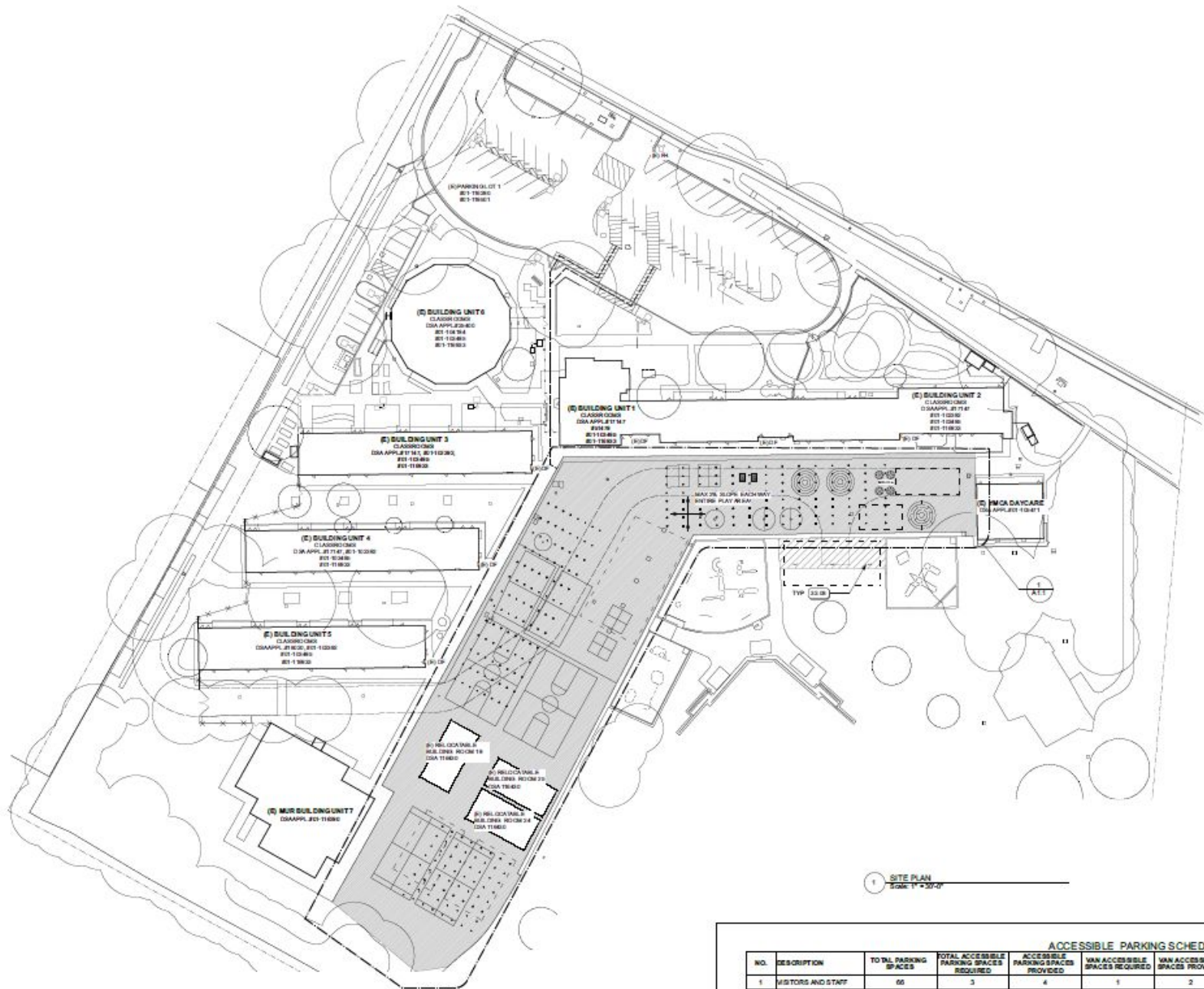
# Scope of Work

- Repair and replacement of asphalt paving and striping in playground at Landels Elementary School. Includes adding paving below new solar array for expanded covered eating and student activity area (currently grass below).

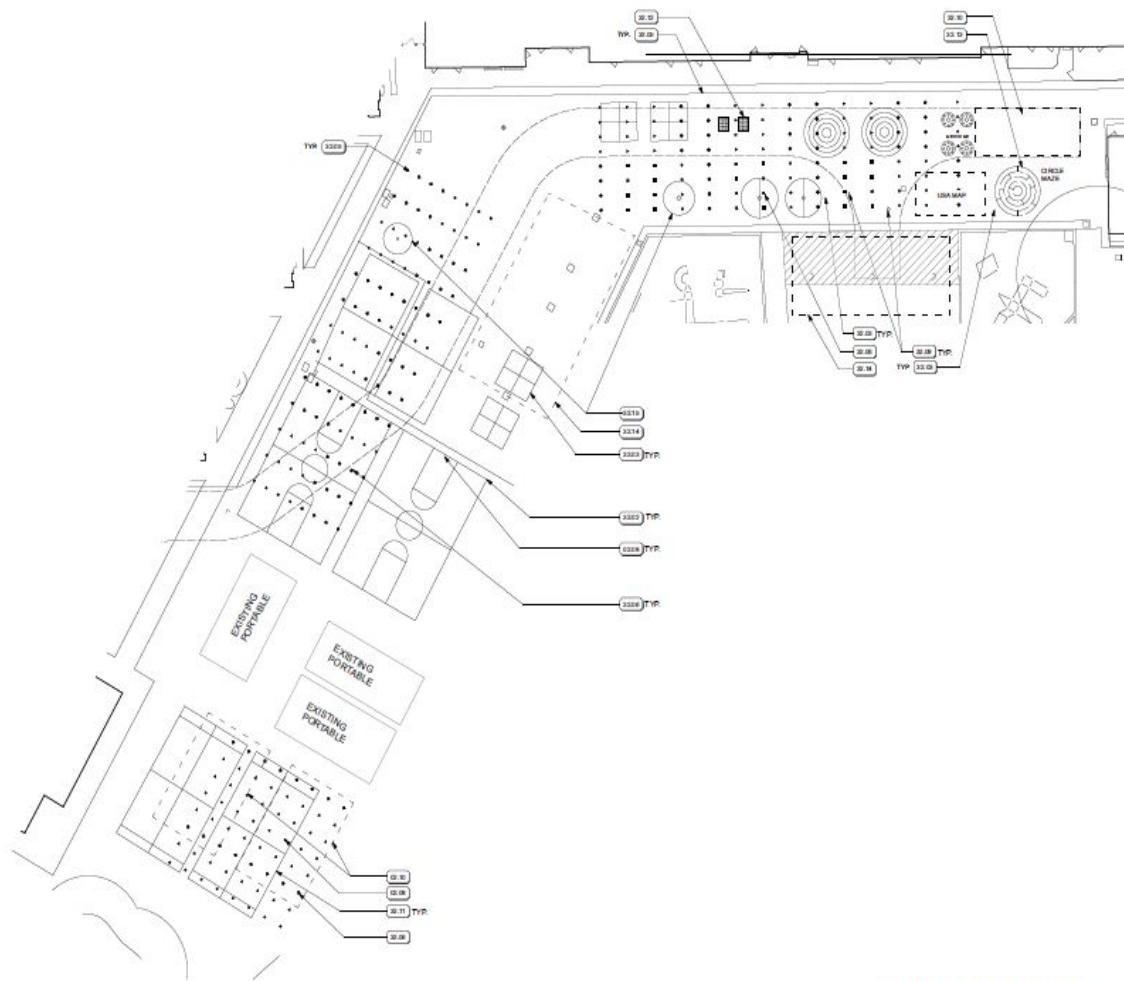


Mountain View  
Whisman  
School District

# Proposed Plans



ACCESSIBLE PARKING SCHEDULE						
NO.	DESCRIPTION	TOTAL PARKING SPACES	TOTAL ACCESSIBLE PARKING SPACES REQUIRED	ACCESSIBLE PARKING SPACES PROVIDED	MAN ACCESSIBLE SPACES REQUIRED	MAN ACCESSIBLE SPACES PROVIDED
1	VISITORS AND STAFF	66	3	4	1	2



**KEYNOTES**

- KEYNOTES
- 01.00 TYPICAL SLAB
- 02.00 FINISH (ACCORDING TO DETAIL AT FINISHING CONTRACTOR SPECIFICATIONS INCLUDING TERMINAL AC INJECTION)
- 03.00 FINISH (ACCORDING TO DETAIL AT FINISHING CONTRACTOR SPECIFICATIONS INCLUDING TERMINAL AC INJECTION)
- 04.00 SEE THE FINISHING CONTRACTOR
- 05.00 FINISH (ACCORDING TO FINISHING CONTRACTOR SPECIFICATIONS INCLUDING TERMINAL AC INJECTION)
- 06.00 FINISH (ACCORDING TO FINISHING CONTRACTOR SPECIFICATIONS INCLUDING TERMINAL AC INJECTION)
- 07.00 FINISH (ACCORDING TO FINISHING CONTRACTOR SPECIFICATIONS INCLUDING TERMINAL AC INJECTION)
- 08.00 FINISH (ACCORDING TO FINISHING CONTRACTOR SPECIFICATIONS INCLUDING TERMINAL AC INJECTION)
- 09.00 FINISH (ACCORDING TO FINISHING CONTRACTOR SPECIFICATIONS INCLUDING TERMINAL AC INJECTION)
- 10.00 FINISH (ACCORDING TO FINISHING CONTRACTOR SPECIFICATIONS INCLUDING TERMINAL AC INJECTION)
- 11.00 FINISH (ACCORDING TO FINISHING CONTRACTOR SPECIFICATIONS INCLUDING TERMINAL AC INJECTION)
- 12.00 FINISH (ACCORDING TO FINISHING CONTRACTOR SPECIFICATIONS INCLUDING TERMINAL AC INJECTION)
- 13.00 FINISH (ACCORDING TO FINISHING CONTRACTOR SPECIFICATIONS INCLUDING TERMINAL AC INJECTION)
- 14.00 FINISH (ACCORDING TO FINISHING CONTRACTOR SPECIFICATIONS INCLUDING TERMINAL AC INJECTION)
- 15.00 FINISH (ACCORDING TO FINISHING CONTRACTOR SPECIFICATIONS INCLUDING TERMINAL AC INJECTION)
- 16.00 FINISH (ACCORDING TO FINISHING CONTRACTOR SPECIFICATIONS INCLUDING TERMINAL AC INJECTION)
- 17.00 FINISH (ACCORDING TO FINISHING CONTRACTOR SPECIFICATIONS INCLUDING TERMINAL AC INJECTION)
- 18.00 FINISH (ACCORDING TO FINISHING CONTRACTOR SPECIFICATIONS INCLUDING TERMINAL AC INJECTION)
- 19.00 FINISH (ACCORDING TO FINISHING CONTRACTOR SPECIFICATIONS INCLUDING TERMINAL AC INJECTION)
- 20.00 FINISH (ACCORDING TO FINISHING CONTRACTOR SPECIFICATIONS INCLUDING TERMINAL AC INJECTION)

**EDITH LANDELS  
ELEMENTARY  
SCHOOL**

PAVING

115 WEST DANA ST  
MOUNTAIN VIEW, CA 94041

**MOUNTAIN VIEW  
WHISMAN SCHOOL  
DISTRICT**

1400 MONTICELLO AVE  
MOUNTAIN VIEW, CA 94043

(925) 526-2000

**SHEET NOTES**

1. ALL DIMENSIONS ARE IN FEET AND INCHES UNLESS OTHERWISE NOTED. ALL DIMENSIONS SHALL BE TO FACE UNLESS OTHERWISE NOTED.
2. ALL DIMENSIONS SHALL BE TO FACE UNLESS OTHERWISE NOTED.

HAMILTON + ATKEN ARCHITECTS

1400 MONTICELLO AVE  
MOUNTAIN VIEW, CA 94043  
WWW.HA-AT.COM



1 ENLARGED PLAN - PLAY AREAS MARKINGS  
Scale: 1" = 20'-0"

NO.	REVISION	DATE
1	ISSUED FOR PERMITS	07/2020

THIS DOCUMENT IS UNREVIEWED BY THE ARCHITECT. THE ARCHITECT IS NOT RESPONSIBLE FOR THE ACCURACY OF THE INFORMATION CONTAINED HEREIN. THE ARCHITECT SHALL BE RESPONSIBLE FOR OBTAINING ALL NECESSARY PERMITS AND APPROVALS FROM THE LOCAL, STATE AND FEDERAL AGENCIES. THE ARCHITECT SHALL BE RESPONSIBLE FOR OBTAINING ALL NECESSARY PERMITS AND APPROVALS FROM THE LOCAL, STATE AND FEDERAL AGENCIES.



Mountain View  
Whisman  
School District

# Proposed Budget

# Schematic Design Budget

#	Description	Quantity	Unit	Unit \$	Total
AC Paving at Playground - Remove and					
1	Replace	59023	sf	\$ 6	\$ 354,138
Demo sod and irrigation and install					
2	pervious paving	300	sf	\$ 25	\$ 7,500
3	Striping	1	alw	\$ 15,000	\$ 15,000
<b>3 Anticipated bid amount</b>		<b>1</b>	<b>ls</b>	<b>\$</b>	<b>376,638</b>

Project Cost					
Description	Quantity		Unit Cost		Subtotal
Construction Budget	1	ls		\$	376,638
Design Contingency	10	%		\$	37,664
Construction Contingency	10	%		\$	37,664
Architect Fees	1	ls	\$ -	\$	26,500
Architect Contingency	1	ls		\$	3,013
Architect Reimbursable Expenses	1	ls		\$	795
Blueprinting	1	ls		\$	2,500
Topographic Survey	1	ls	\$ 5,000	\$	5,000
Soils Report & Testing	2	%		\$	7,533
CM Fees	4.5	%		\$	18,644
DSA Inspector	2	mos.	\$ 5,500	\$	11,000
Testing Laboratory	1	%		\$	3,766
Bid Advertisements	1	ls		\$	2,500
DSA Fees	1.2	%	\$ 451,966	\$	5,424
CEQA	1	ls	\$ 1,500	\$	1,500
Legal	1	ls	\$ 2,500	\$	2,500
<b>Grand Total</b>				<b>\$</b>	<b>542,640</b>

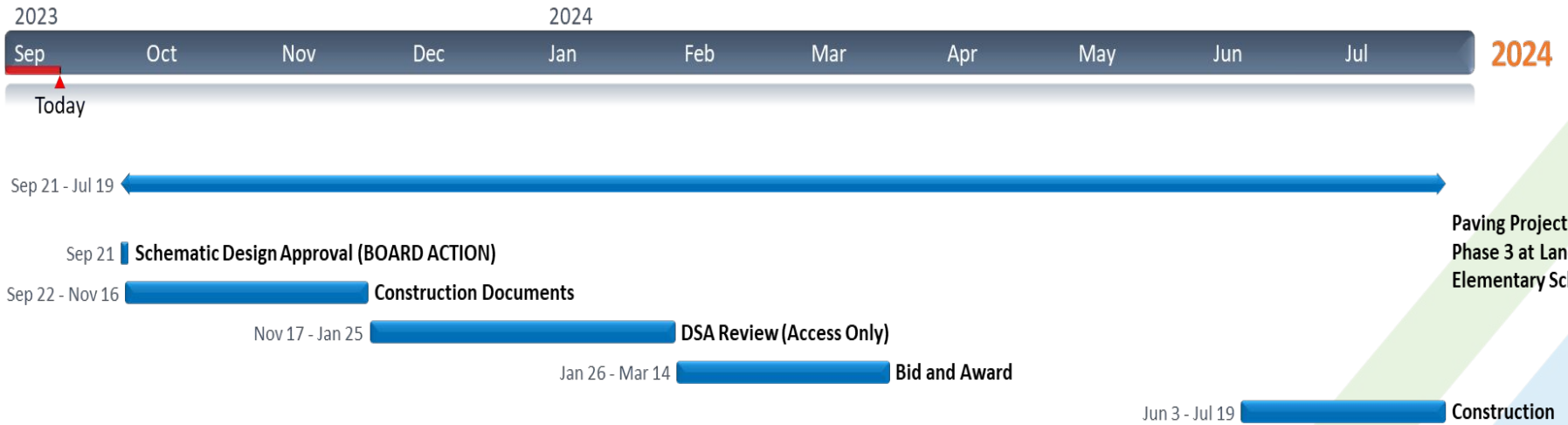




Mountain View  
Whisman  
School District

# Schedule

# Schedule





Mountain View  
Whisman  
School District

# Thoughts and Questions