

MONTA LOMA OUTDOOR IMPROVEMENTS PROJECT FENCING OPTIONS

Presentation to Board of Trustees
August 17th, 2023



AGENDA

- Context
- Community Input Process
- Fence Options
- Gate Options
- Budget
- Questions

The Needs

- MVWSD is owner of the largest amount of green space
- As a school and neighborhood community, we have worked together over the last couple of years to balance how school fields are used
 - students and staff to play and do physical education
 - residents' need for green space recreation.
- We view sharing our green space as our pledge to the community we serve.
- We believe that the school's and the community's needs are not mutually exclusive, and that a solution is possible.

The Needs

- Student and staff safety and security
 - We are responsible for their safety when they are in our charge

Security Issues at Monta Loma

2021-22: **81** incidents - 3 were hostile, argumentative, uncomfortable engagement, or involved MVPD*

2022-23: **155** incidents - 10 were hostile, argumentative, uncomfortable engagement, or involved MVPD

2023-24: **5** so far this year

- *includes people entering classrooms, bathrooms or the office*



Mountain View
Whisman
School District

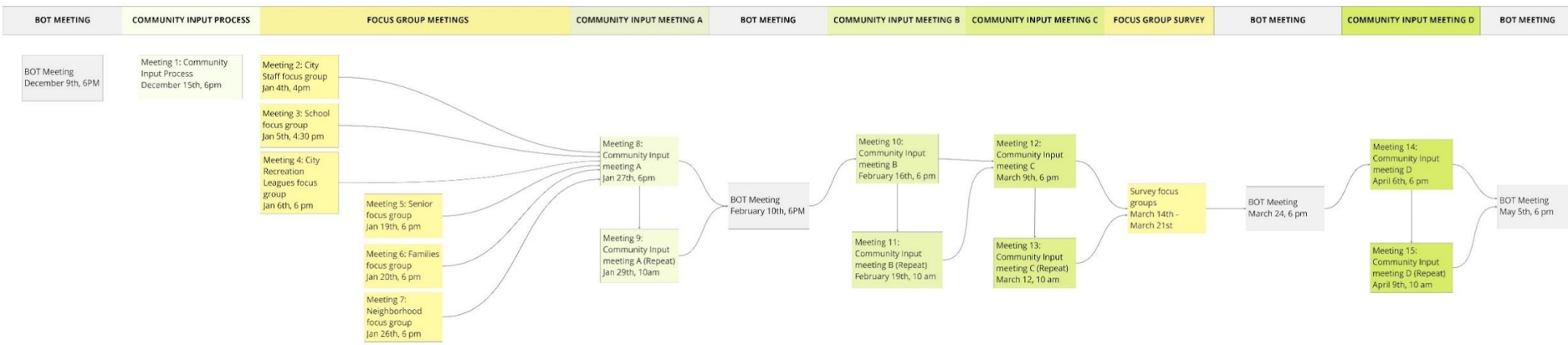
HISTORICAL CONTEXT: PREVIOUS PROPOSALS (HYA SEPT 9, 2021)



Monta Loma Work Group Recap

- Work group consisted of community members, teachers/staff, City representatives and parents.
- Discussions illuminated multiple items that need to be addressed, and more solutions based on data.
- On June 17th, 2021 the Board gave direction to move the Monta Loma open space reconfigurations to a priority 1 project and bring on an architect
- Carducci Associates was selected to perform a series of input meetings with stakeholders and produce solutions for the field configuration that benefit all users

COMMUNITY INPUT PROCESS - (DEC 2021-MAY 2022) Overview



- 15 of Community Input Meetings – Between December 2021 through May 2022
 - Includes General Community Meetings, Repeats and Focus Groups
 - Postcards to the Community
 - Public Miro Board for Ongoing Input & Data Gathering

Monta Loma Outdoor Improvements Project |
Carducci Associates
Mountain View Whisman School District

Public Outreach Goals

- Provide an equitable public outreach strategy that reaches as many users as possible
- Include multiple times and means of collecting input
- Provide for engaging productive meetings to gather input
- Develop design solutions that incorporate user input and needs
- Create a consensus of understanding of all users needs
- Develop a plan that will benefit and support all users
- Encourage participation from as many user groups as possible

Communicating with District and City

- Weekly design team meetings with District
- Bi-monthly design team meetings with District and City
- Regular updates to Board of Trustees
- Regular updates to City Council from City staff
- Student Imagery Package and Survey distributed by Staff

Communicating with Residents

- Mailed postcards to residents
- Regular updates to webpage:
MVWSD.org/MontaLomaField
- Email meeting updates and reminders
- Online Surveys for those users who cannot attend the community meetings
- Social Media
- Email Listserv
- Community Board

SEPTEMBER 2021, ISSUE 2



SHARING MONTA LOMA

Regular updates on shared community use of the school fields at Monta Loma Elementary for the residents of the Monta Loma neighborhood from the Mountain View Whisman School District



NEW COMMUNICATION TO RESIDENTS

The Mountain View Whisman School District and the City of Mountain View are beginning their work on a joint exploration to best maximize school/community use of Monta Loma Elementary greenspace. This newsletter will come to you each month.

THE LATEST

Welcome back to Monta Loma students and staff members! Best wishes to everyone for a safe 2021-22 school year.

Summer Pilot Program: This summer, you may have noticed yellow cones in the field. In June, MVWSD and the City launched a pilot program to provide public access to areas of the Monta Loma greenspace while summer school was in session. The District and City will continue the program to indicate the areas that are available for public use during the school day.

Public Access Reminder: Now that school is back in session, public access will follow the pilot program guidelines. Public access is limited to the designated areas (*See map on reverse: Blue areas*) during the school office hours of 7:30 am to 4:00 pm. Publicly accessible areas are the tot lot, the areas marked by cones at the front of the school and along the tree line adjacent to the tot lot, and at the back of the baseball diamond. The public will have full access to the Monta Loma school greenspace outside of school business hours.

Continued on reverse

IN THIS NEWSLETTER

- Summer pilot - 1
- Public access - 1
- New pathway connection - 2
- Architect and next steps - 2

Email updates

To sign up for email updates on this topic, please visit: <http://mvw.sd/ConstUpdates>



Get in Touch

[facebook.com/MVWSD](https://www.facebook.com/MVWSD)
[facebook.com/MontaLomaElem](https://www.facebook.com/MontaLomaElem)

#MVWSD

[MVWSD.org/Construction](https://www.mvw.sd.org/Construction)

Para obtener una versión en español de este aviso, vaya aquí.



The Mountain View Whisman School District prohibits discrimination, harassment, intimidation and bullying in educational programs, activities, or employment on the basis of actual or perceived ancestry, age, color, disability, gender, gender identity, gender expression, nationality, race or ethnicity, religion, sex, sexual orientation, parental pregnancy, family or marital status, military status or association with a person or a group with one or more of these actual or perceived characteristics. The Mountain View Whisman School District requires that school personnel take immediate steps to intervene when said to do so when he or she witnesses an act of discrimination, harassment, intimidation, or bullying. Questions or complaints of alleged discrimination, harassment, intimidation and bullying, equity or Title IX equity and compliance concerns should be directed to: Tara Wignat at 650.526.2500, 1400 Montecito Ave., Mountain View, CA 94043, or twignat@mvwvwsd.org.

SEPT 2021, ISSUE 2

WHAT'S NEXT?

Architect to be Hired: On June 18, the MVWSD Board of Trustees voted to make the redesign of the Monta Loma greenspace a Priority 1 project. This means that the District will set aside funds for hiring an architectural firm. Since then, MVWSD has sent out a request for proposals for architects. At a September Board of Trustees meeting, the Board will hear an update from District staff. The Board will also consider approving an architectural firm that will be recommended jointly by City and District staff members. Please watch this webpage for meetings dates, times, agendas and supporting materials:

<http://mvw.sd/agenda>

New Pathway Connection: As a result of the pilot program, the City and MVWSD recognized a need to add an asphalt pathway to connect the existing asphalt path from the Anna access point to the existing asphalt path that leads behind the baseball field. The City expects to install the path later this fall. You will see the location of this path (*See map: Shown as a yellow line*)



Monta Loma campus map

Yellow triangles = Cones
Blue rectangles = Signs
Yellow line = Future path

PRRST STD
U.S. POSTAGE
PAID
SAN JOSE, CA
PERMIT 1206

Mountain View Whisman
School District
1400 Montecito Ave.,
Mountain View, CA 94043

marked by a temporary orange barrier until the asphalt is installed. The purpose of the temporary barrier and the new path is to provide a clear route for public access and maintain appropriate separation with students and staff when school is in session.

Next Steps: MVWSD and the City will work together to develop and guide the design process and to hold multiple meetings to hear community input. This process will be defined once the architectural firm has been hired. Please look for additional communication this fall.

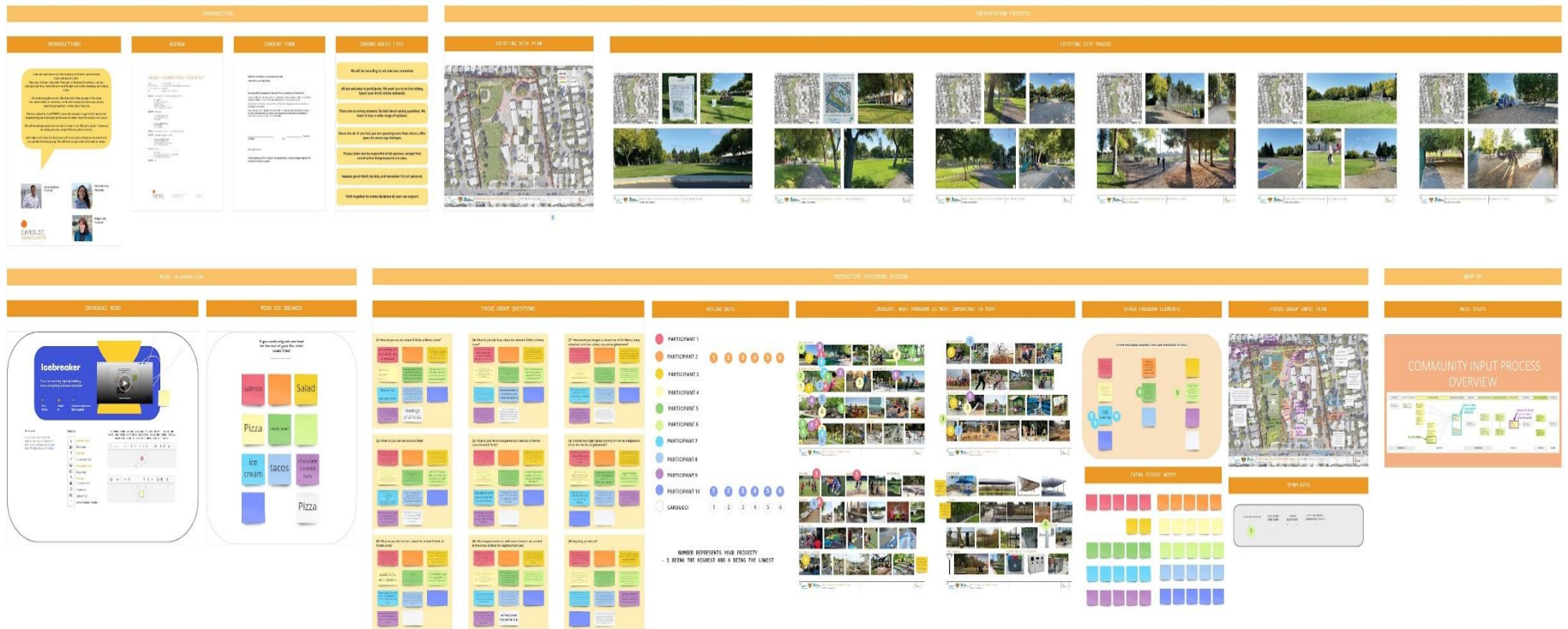
Monta Loma Outdoor Improvements Project |
Carducci Associates
Mountain View Whisman School District



Mountain View
Whisman
School District

Stakeholder Feedback

Typical focus group Miro Board example



City Staff Focus Group

- January 4th @ 4pm
- Duration: 1 hour, 20 minutes
- Three main priorities per discussion:
 - Maintenance access for fields and playground/park facilities
 - Community access to open space for active/Passive activities during and after school hours
 - Field use for youth sports organizations



School Staff Focus Group

- January 5th @ 4:30pm
- Duration: 1 hour, 30 minutes
- Three main priorities per discussion:
 - Mutual understanding/respect of open space usage for all site users.
 - Delineation of open space which creates a safe/secure greenspace for students during school hours.
 - A playground that addresses all student needs (inclusive play).



City Recreation Leagues Focus Group

- January 6th @ 6pm
- Participants: 1 hour, 15 minutes
- Three main priorities per discussion:
 - Continued flexible usage of little league and soccer field space.
 - Maintenance of fields: drainage, dog droppings, gophers, bleachers, vandalism to building, etc.
 - Central location for the youth of Monta Loma that are a part of the organizations.



Seniors Focus Group

- January 19th @ 6pm
- Participants: 2 hours
- Three main priorities per discussion:
 - Maintaining openness of the greenspace available to community use during and before/after school hours.
 - Looking at ways to secure the site for the students that address school's security issues without the use of fencing and/or fragmenting the site.
 - Walking is a major use of the site, and existing circulatory paths should be considered when looking at improvements. Walkways can be better maintained.



Families Focus Group

- January 20th @ 6pm
- Participants: 2 hours
- Three main priorities per discussion:
 - Providing more open greenspace than currently being provided for children to run in during school hours
 - Play spaces adjacent to greenspace that has good visibility/sightlines are important for families with small children
 - Not using fencing along entire extent of property for security and prioritizing open green space



Neighborhood Focus Group

- January 26th @ 6pm
- Participants: 3 hours
- Four main priorities per discussion:
 - Preservation of open green space during non-school hours, and maintaining the site's ability to be a place of community building, and gathering.
 - Finding innovative ways to secure site without fencing
 - Park amenities can be improved and/or updated: benches, picnic tables, play structures, native plantings and pathways
 - Community access areas at Laura and Anna are dark, and narrow. Look at ways to use low-level pathway lighting and mirrors to improve security to these areas.



All Focus Group Questions Overview

Q3: What do you like the best about the school & fields at Monta Loma?



Q4: What do you like least about the school & fields at Monta Loma?



All Focus Group Questions Overview

Q5: What is your favorite experience or memory of Monta Loma School & Fields?



Q6: What improvements or additional elements are needed at the school & fields?



All Focus Group Questions Overview

Q7: How would you imagine a shared use of the Monta Loma school site with the school, city and neighborhood?

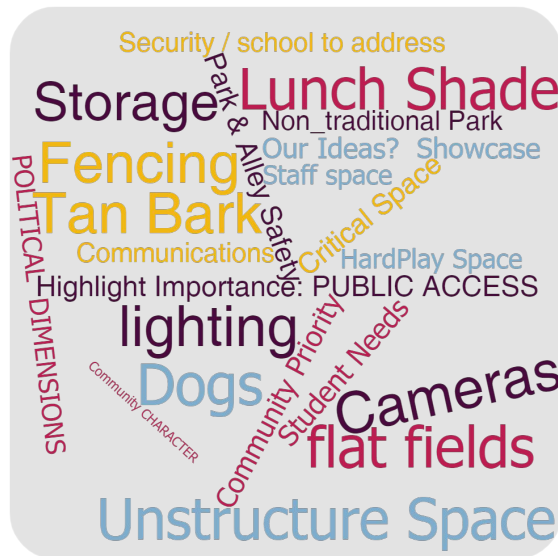


Q8: What is the single highest priority for the reconfiguration of the site?



All Focus Group Questions Overview

Q9: Anything we missed?



All Focus Group Imagery Overview

Imagery Voting Matrix

IMAGE CATEGORIES	PRIORITY SCALE						TOTAL VOTES	TOTAL VALUES
	1ST	2ND	3RD	4TH	5TH	6TH		
YOUTH SOCCER / SOCCER	18	15	16	6			12	55
LITTLE LEAGUE / BASEBALL	12	20	8		4		10	44
BOCCE BALL								
PICKLEBALL								
SOCIAL SPACES	36	15	16	6			15	73
EXERCISE STATIONS	6					2	3	8
SEATING			8	3		2	5	13
WALKING	6	20	8	9	10	3	18	56
TABLES			8	6			4	14
PICNIC		10		12	8	2	12	32
UNSTRUCTURED PLAY	24	20		3	4	4	15	55
KINDER-TOT PLAY	6	5	16		4	1	9	32
NATURE PLAY		5	16	9	2	1	10	32
PLAY	24	5	4	6	2	1	10	42
HARDCOURT		5		3	2	2	5	12
OUTDOOR LEARNING		5	4	3	2	3	7	17
SHADE STRUCTURES		15	8				5	23
FENCING	30						5	30
SITE LIGHTING				3			1	3
WATER STATIONS				3	6	5	9	14
WASTE / RECYCLING				3	3		2	5
INCLUSIVE PLAY	6	5		3	2		4	16

Imagery Voting Word Cloud



All Focus Group Imagery Overview

Other program elements that were not listed in the imagery package that are important to the constituents.

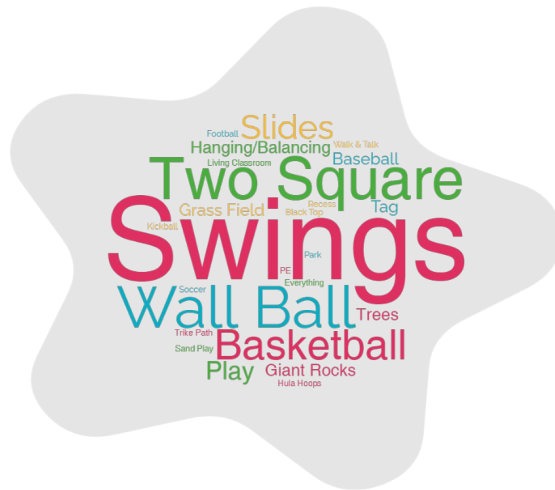
Top three additional programs were:

- Open Space
- Unstructured Play
- Inclusive Play



Student Survey Input

What is your **MOST FAVORITE** thing about the outdoor areas of your school?

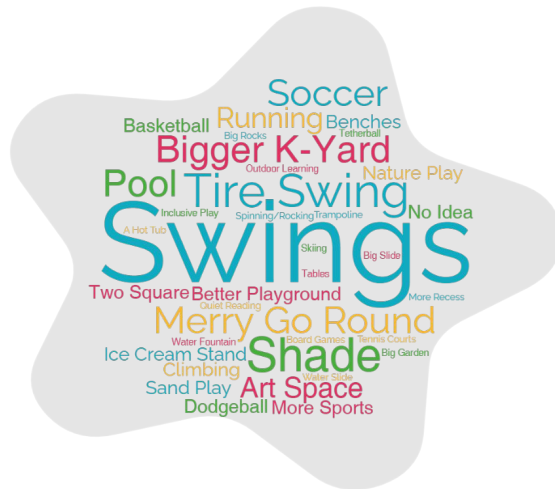


What is your **LEAST FAVORITE** thing about the outdoor areas of your school?



Student Survey Input

What do you WISH you had outdoors at your school?



What do you NEED outdoors at your school?



FOCUS GROUP DATA FOR PUBLIC VIEWING

The data is organized into three main sections:

- WHAT YOU SEE (Left Column):** Contains 9 panels of sticky notes on a grid background, each with a question at the top. Questions include: "How do you see the school & fields at this time?", "What do you like about the school & fields at this time?", "What do you see the school & fields?", "What is your favorite experience or memory of this school & field?", "What do you see the school & fields at this time?", "What memories or activities can you remember at the school & field?", "What do you see?", "What do you see the school & fields at this time?", and "What do you see the school & fields at this time?".
- WHAT YOU HEAR (Middle Column):** Contains 8 panels of photo grids. Each panel has a question at the top: "What do you hear?", "What do you hear?", "What do you hear?", "What do you hear?", "What do you hear?", "What do you hear?", "What do you hear?", and "What do you hear?".
- WHAT YOU THINK (Right Column):** Contains 8 panels. The first panel is a circular diagram with text. The next three panels are maps of a school site with colored overlays. The final three panels are data entry forms with multiple rows of text input fields.

General Summary of Input

Maximize Open Green Space – Unstructured
Importance of Nature

Upgraded Furnishings – Picnic, Benches, and
Fitness

Upgraded Play – Structures, Ball Wall, Two Square

Upgraded Pathways – Surfacing and Widening

Providing Safety and Security

Maintain Current Available Amenities



Mountain View
Whisman
School District

Board Direction

BOARD DIRECTION – SUMMER PILOT PROGRAM - 2022 (temporary)



Yellow triangles = Cones
Blue rectangles = Signs
Yellow line = Future asphalt path

Orange barricade has been placed by the yellow line as a temporary measure.

Monta Loma Outdoor Improvements Project |
Carducci Associates
Mountain View Whisman School District

Outcome of Pilot

- Temporary signage and barriers redirecting adults away from children during the day was not effective.
 - Didn't achieve the desired results and further divided the community.
 - I.e pilot arrangement, while school is in session MVWSD staff placed cones out in the fields at the start of the day, and City staff brings them in.
 - when the cones were left out by city staff last year, residents blamed school officials for trying to restrict access
 - During the summer cones were left in the field for reasons unbeknownst to MVWSD



Mountain View
Whisman
School District

Lessons Learned

Lessons learned: Signage

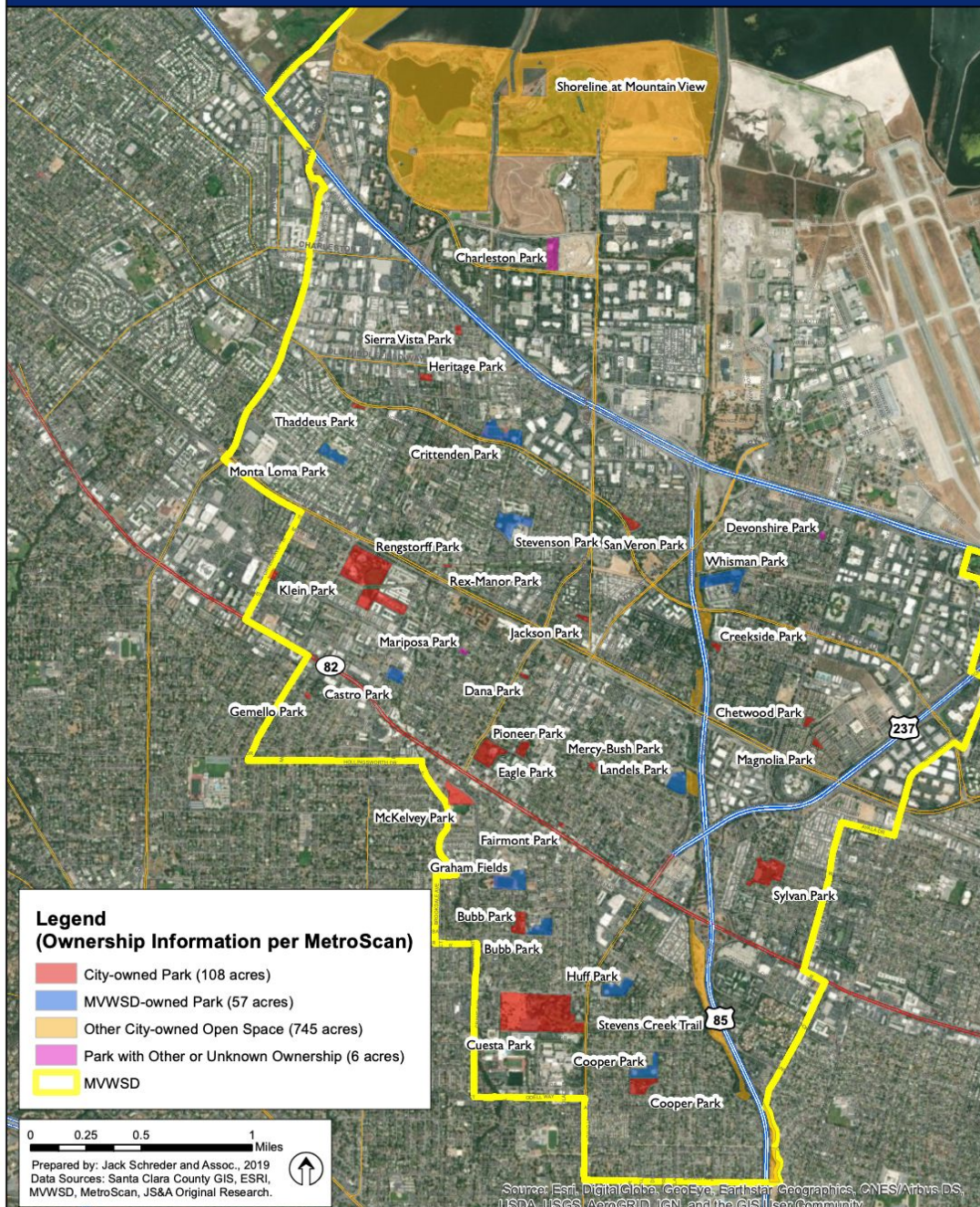
- All Stakeholders have expressed their concern about
 - Signage
 - Confusion about who owns the field
 - makes it hard to report issues and in several instances has led to multiple agencies stating that it is not their responsibility
 - Hours of access at the same school site were listed differently depending on the sign
 - Confusing: Too much information included

Lessons learned: Access

- All Stakeholders have expressed their concern about
 - Access
 - Despite MVWSD Board of Trustee and Senior Staff assurances, interagency conflict over Joint Use Agreement (JUA) has led to some City officials and staff to opine that MVWSD wants to restrict access
 - MVWSD is funded by public dollars and has no interest in restricting before or after access

Mountain View Parks and Green Spaces by Ownership

Mountain View Whisman School District



Lessons learned: Community open space

- MVWSD is
 - one of the largest landholders in the City
 - provides valuable open space access to all residents
 - 57 acres equitably distributed throughout the city
 - Accounts for approximately $\frac{1}{3}$ of all open space
- MVWSD helps
 - through the JUA helps to facilitate the renting of fields for various purposes
 - Schools like Vargas, which is not covered by the JUA, are used nightly by adults who want to workout after hours (free of charge)
- MVWSD will
 - start offering meeting space to neighborhood organizations at no charge (for a small community service requirement)

Lessons Learned: After hours issues

- After Hours vandalism has dropped precipitously since the installation of cameras and fences
- Walkway lighting has also helped to reduce staff concerns about safety after hours

Racist vandalism discovered at Huff Elementary School

Other vandalism incidents reported at Mountain View Whisman schools in the past month

by Kevin Forestieri / Mountain View Voice



Uploaded: Thu, Nov 5, 2020, 1:16 pm
Time to read: about 3 minutes

22



News

'Destructive activities' prompt Mountain View Whisman to add security cameras to school campuses

School district sets aside \$3 million in bond funds for video surveillance

by Zoe Morgan / Mountain View Voice



Uploaded: Thu, Oct 28, 2021, 1:52 pm
Time to read: about 3 minutes

1



Mountain View
Whisman
School District

Solutions

Solution 1: Signage

Need clear signage for safety and lack confusion

Language is important for residents to understand use, who to report issues to as well as ownership

Old sign



New sign



Signage:

- Four signs were replaced with new signage designating appropriate ownership.

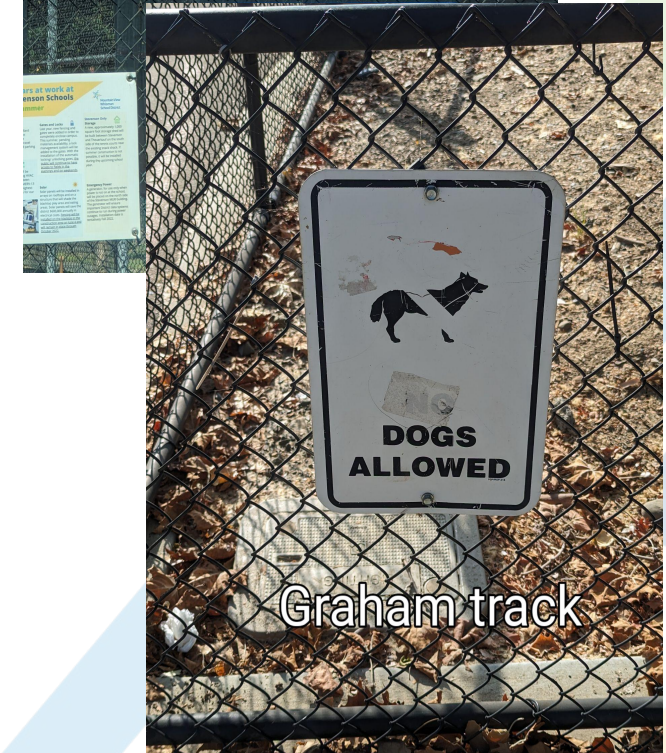
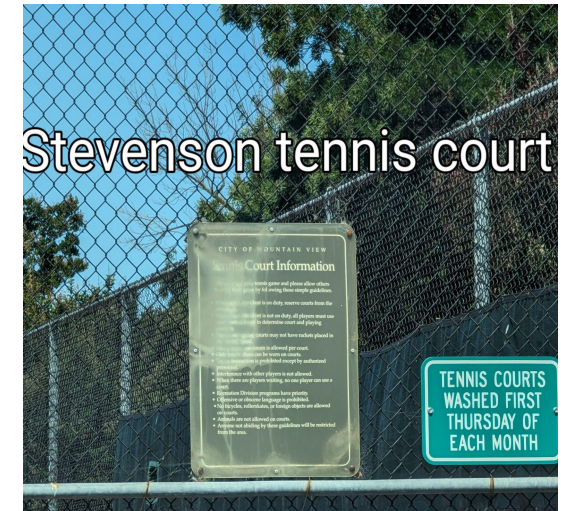


Signage:

- Staff will work with City staff to address older signs that need to be replaced



Mountain View Whisman School District



Graham track

Signs continued...

Current signage

THEUERKAUF SCHOOL FIELD

ACCESS PROVIDED THROUGH A JOINT USE AGREEMENT BETWEEN MOUNTAIN VIEW WHISMAN SCHOOLS AND THE CITY OF MOUNTAIN VIEW

Rules & Regulations

Public access to school grounds is not allowed from 7:30 am to 4:00 pm when school is in session

Animals must remain on leash

Alcoholic beverages, drugs, and smoking are prohibited

Organized sports activities by permit only. Please contact (650) 903-6331 for permit information
Issues with locks? (650) 526-3248 x1004 Maintenance Issues? (650) 903-6326

<p>ACCESO PROPORCIONADO POR MEDIO DE ACUERDO CONJUNTO ENTRE ESCUELAS DE MOUNTAIN VIEW WHISMAN Y LA CIUDAD DE MOUNTAIN VIEW</p> <h4>Reglas & Regulaciones</h4> <p>No es permitido el acceso público al plantel durante 7:30 am a 4:00 pm cuando las clases están en sesión</p> <p>Las mascotas deben permanecer con correa</p> <p>Se prohíben bebidas alcohólicas, drogas y fumar</p> <p>Actividades de deportes organizados solo con permiso</p> <p>Favor de contactar (650) 903-6331 para información de permisos ¿Problemas con cerraduras? (650) 526-3248 x1004 ¿Problemas de Mantenimiento? (650) 903-6326</p>	<p>VIỆC SỬ DỤNG SÂN CHƠI TRƯỜNG TIỂU HỌC ĐƯỢC CHỈ ĐỊNH GIỮA KHU HỌC CHÀNH MOUNTAIN VIEW WHISMAN VÀ THÀNH PHỐ MOUNTAIN VIEW NHƯ SAU</p> <h4>Nội quy và Điều lệ</h4> <p>Công chúng không được phép vào sân trường từ 7:30 sáng đến 4:00 giờ chiều trong lúc trường đang vào giờ học</p> <p>Chó không được thả rông, phải được đeo dây xích</p> <p>Cấm không được hút thuốc, sử dụng ma túy hoặc những thức uống có cồn</p> <p>Chỉ được tổ chức những trò chơi thể thao nếu có giấy phép</p> <p>Xin vui lòng gọi số (650) 903-6331 để có thông tin về việc xin giấy phép nếu có vấn đề gì với công ty khóa. Xin gọi số (650) 526-3248. EXT. 1004</p> <p>Các vấn đề bảo trì xin gọi số (650) 903-6326</p>
<p>山景城威斯曼学校 以及 山景城市 共同 协议</p> <h4>场地使用规章</h4> <p>从上午 7:30 至下午 4:00 间学校上课</p> <p>公众不许进入校园</p> <p>所有动物必须有项带牵引</p> <p>禁止酒类, 毒品和抽烟</p> <p>有组织的体育活动必须有准证</p> <p>请联系 (650) 903-6331 准证信息</p> <p>锁有问题? (650) 526-3248 x1004</p> <p>维修问题? (650) 903-6326</p>	<p>Доступ предоставляется по соглашению о совместном использовании между школами Mountain View Whisman и City of Mountain View.</p> <h4>Правила и Положения</h4> <p>Общественный доступ на территорию школы запрещен во время работы школы с 7:30 до 16:00.</p> <p>Все животные должны быть на поводке.</p> <p>Алкогольные напитки, наркотики и курение запрещены.</p> <p>Организованные спортивные мероприятия только по разрешению.</p> <p>За информацией обращайтесь по телефону (650) 903-6331.</p> <p>Проблемы с замками? (650) 526-3248 x1004</p> <p>Проблемы с обслуживанием? (650) 903-6326</p>

Municipal Code Section 38; Penal Code Section 602 and 626.4

Proposed new signage

Mountain View
Whisman
School District

BUBB SCHOOL & FIELD

Rules

- | | |
|---|---|
| <ul style="list-style-type: none"> <li style="margin-bottom: 10px;"> No public access
7:30 a.m. - 4:00 p.m. <li style="margin-bottom: 10px;"> During school hours visitors must check in at the office. <li style="margin-bottom: 10px;"> Animals must be on leash <li style="margin-bottom: 10px;"> No alcohol, drugs, or smoking <li style="margin-bottom: 10px;"> Organized sports activities by permit only. Please contact (650) 903-6331 for information. <p style="margin-top: 20px;">Issues with locks?
(650) 526-3248 x1004</p> <p>Field Maintenance?
(650) 903-6326</p> | <ul style="list-style-type: none"> <li style="margin-bottom: 10px;"> Sin acceso al público
7:30 a.m. - 4:00 p.m. <li style="margin-bottom: 10px;"> Durante el horario escolar, los visitantes deben registrarse en la oficina. <li style="margin-bottom: 10px;"> Los animales se deben llevar con correa <li style="margin-bottom: 10px;"> Está prohibido el alcohol, las drogas y fumar <li style="margin-bottom: 10px;"> Actividades deportivas organizadas solo con permiso. Para obtener información por favor llame al (650) 903-6331. <p style="margin-top: 20px;">¿Problemas con las cerraduras?
(650) 526-3248 x1004</p> <p>¿Mantenimiento de campo?
(650) 903-6326</p> |
|---|---|

WWW.MVWSD.ORG

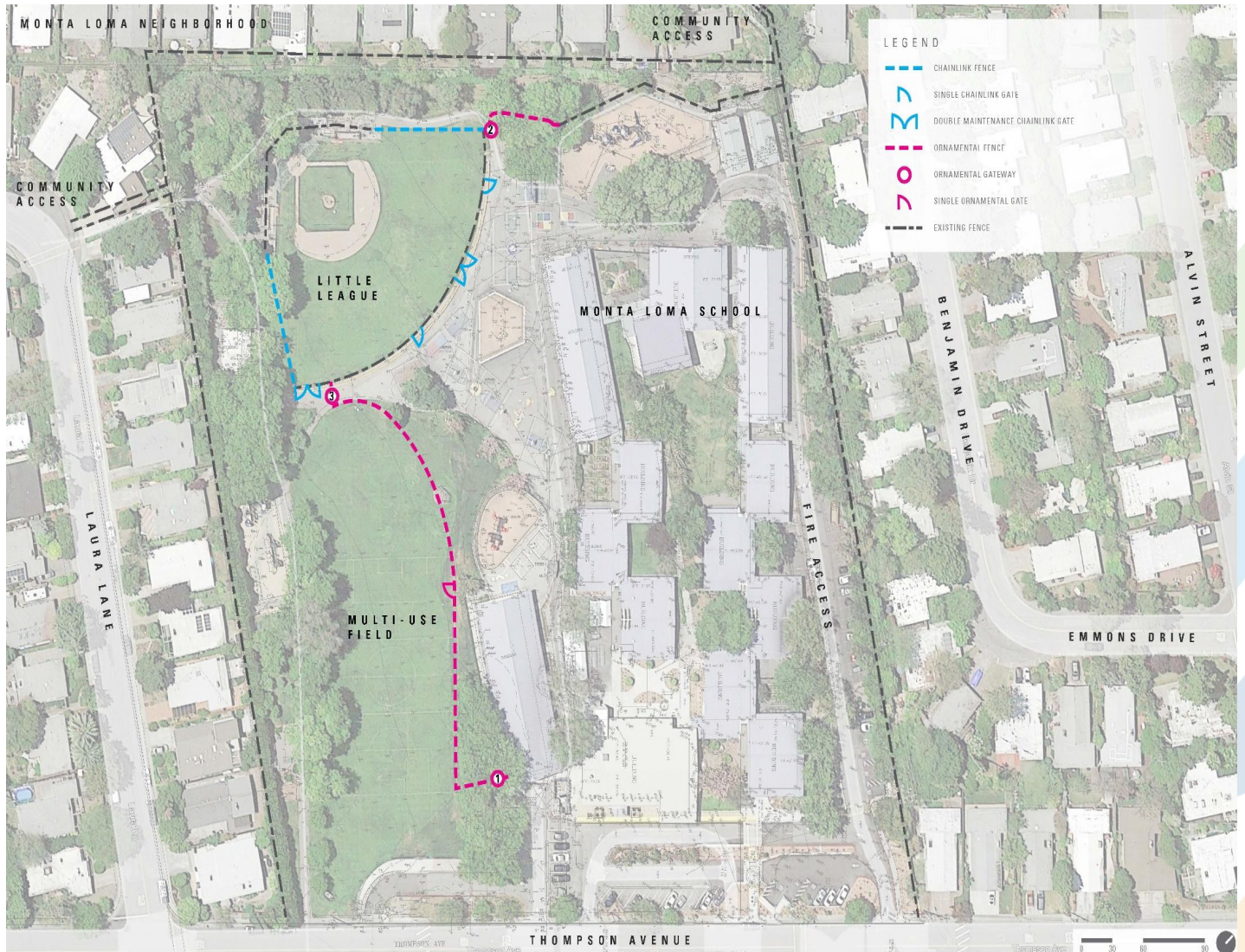
THANK YOU FOR YOUR SUPPORT OF OUR SCHOOLS!

Solution 2: Fence Options

- Three project options attempt to carve out safe outdoor space for students, while at the same time preserve as much open space as possible.
- Goal is to find the appropriate balance between school field use and community access during the day, without the need for signs, security and uncomfortable moments.
 - Staff recognizes that no one option that will make everyone happy

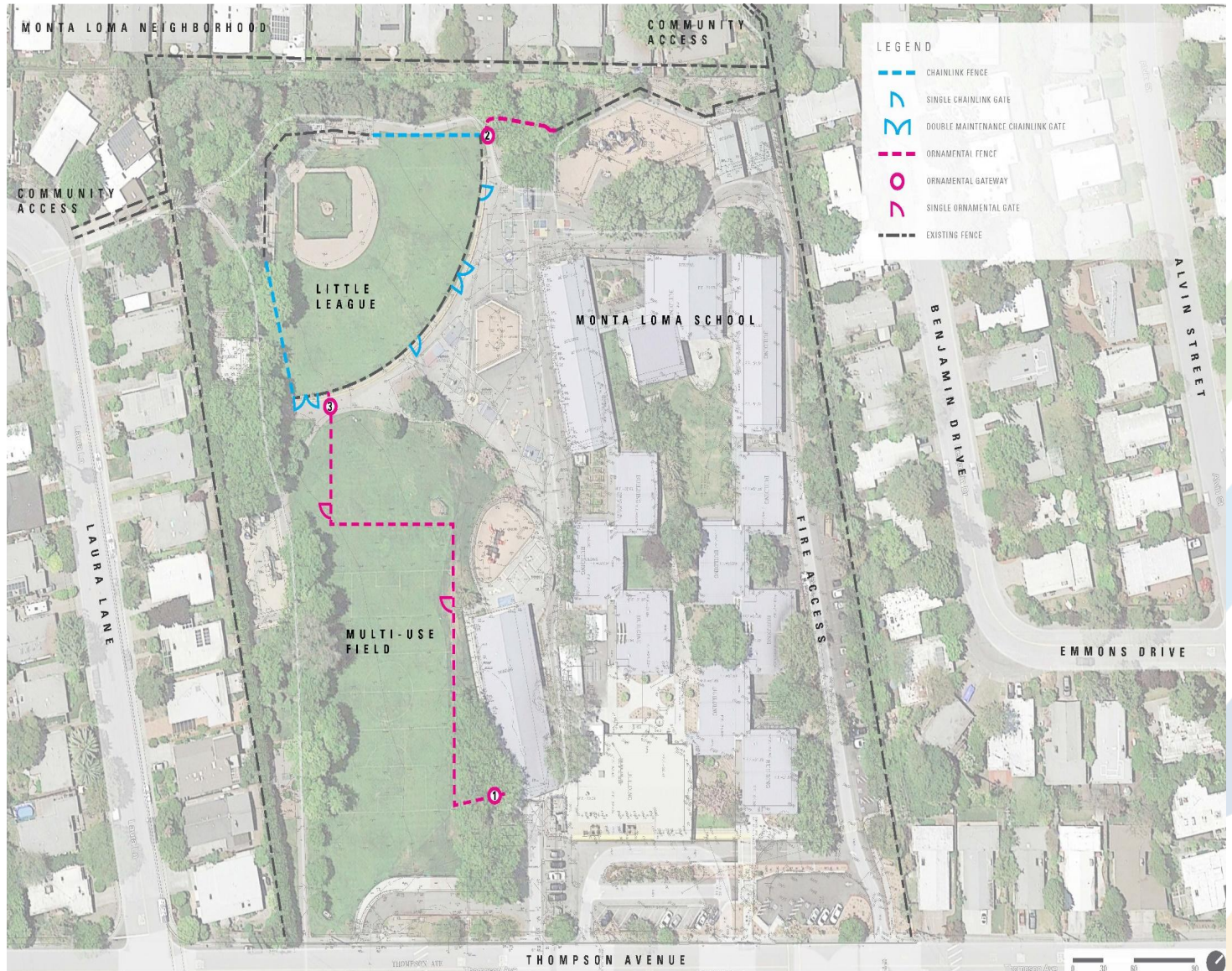
Recommended

OPTION 1:



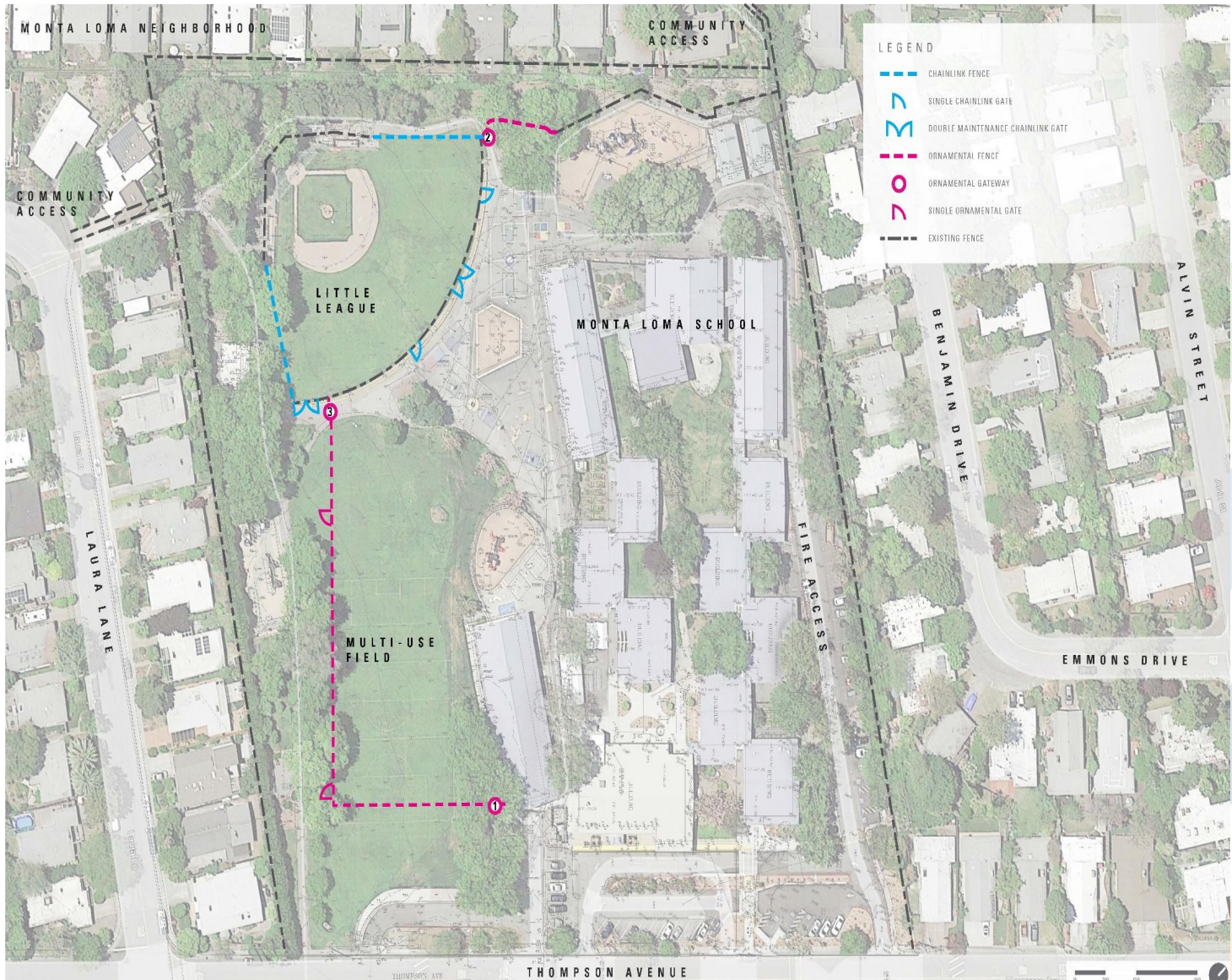
Not Recommended

OPTION 2:



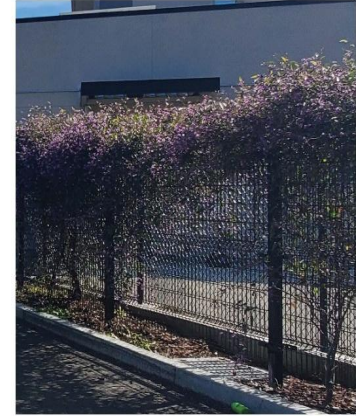
Not Recommended

OPTION 3:



FENCE & GATEWAY OPTIONS

FENCE TYPES



GATEWAY OPTIONS



**OPTION
1:**



OPTION 2:



**OPTION
3:**

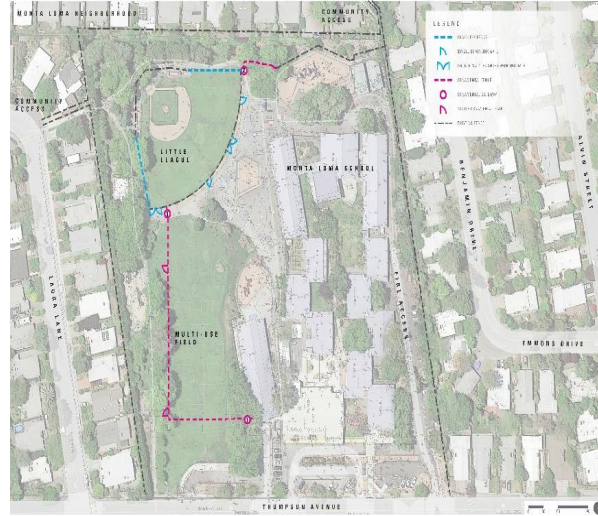


FENCE BUDGET

OPTION 1: \$516,721



OPTION 3: \$554,932



OPTION 2: \$561,026



Current Options: Outreach and Input

Outreach: Notices to:

Residents (direct mail to 600)

Monta Loma staff

Neighborhood email listserve (includes neighborhood association leaders and residents who've sign up)

City Council/Manager/Parks Dept./Parks and Rec commission

ML school sign

A frame signs at the entrances to the field - Aug 14-24

Input (three points):

Board of Trustees meeting on Aug. 17

Community meeting, Aug. 24 at 5 pm in the Monta Loma Elementary Multi-use room (with Carducci & Associates)

Email comments to MLopenspace@mvsd.org by Aug. 24.

Next Steps

Tonight: Board discussion and direction

Through Aug. 24: Incorporation of all feedback; Refine chosen option

Sept. 7: Refined option to the Board for consideration for final approval

An aerial photograph of a residential neighborhood. In the center, there is a large school building with a distinctive white tower. To the left of the school is a green baseball field with a brown infield. The surrounding area is filled with houses, trees, and streets. The word "Questions?" is overlaid in the center in a blue, bold, sans-serif font, with a blue underline.

Questions?