

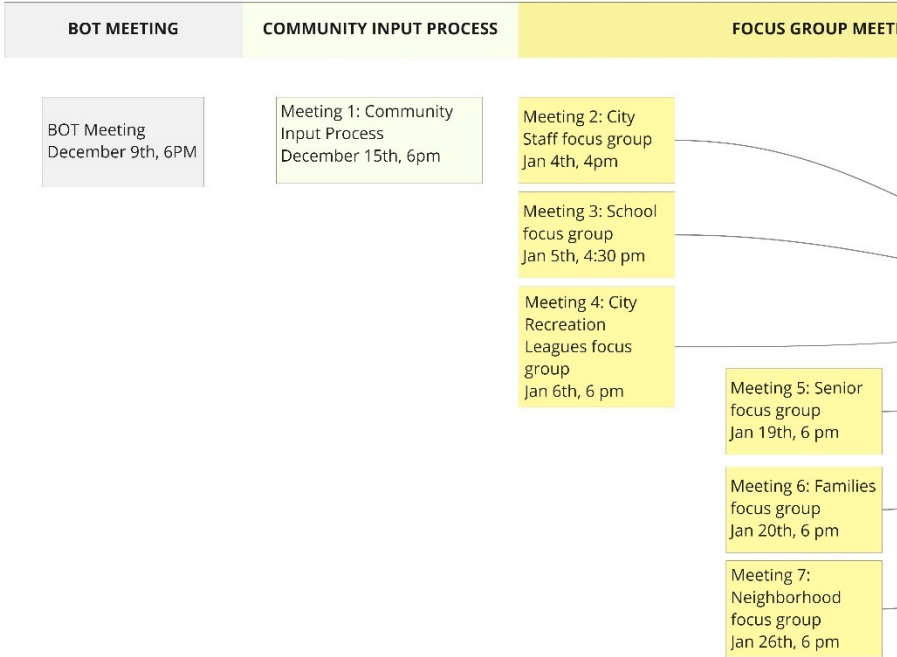
# MONTA LOMA OUTDOOR IMPROVEMENTS PROJECT FENCING OPTIONS

Addendum to the  
Presentation to Board of Trustees  
August 17<sup>th</sup>, 2023



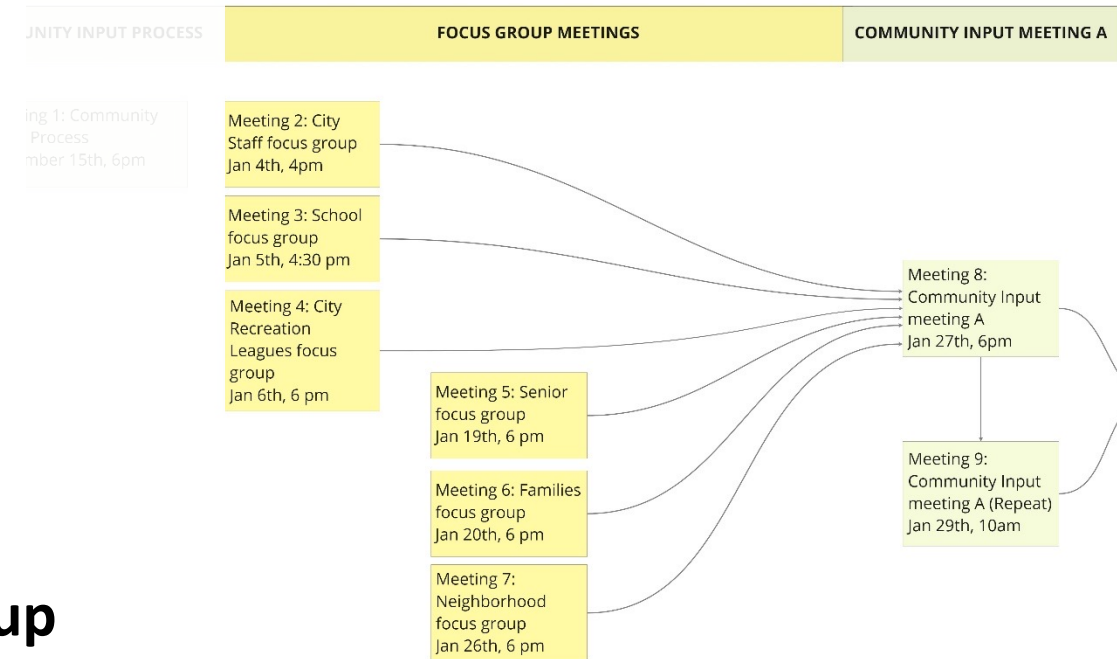
# Process Schedule

- **MVWSD Board of Trustees Meeting**
  - Thursday, December 9, 2021 at 6 pm
  - First presentation to the Board of Trustees about process
  
- **Meeting 1: Community Input Process**
  - Wednesday, December 15, 2021 at 6 pm
  - First presentation to community about public outreach process and meeting schedule
  - Familiarize community with how the outreach process will be conducted and how to provide input and get involved.



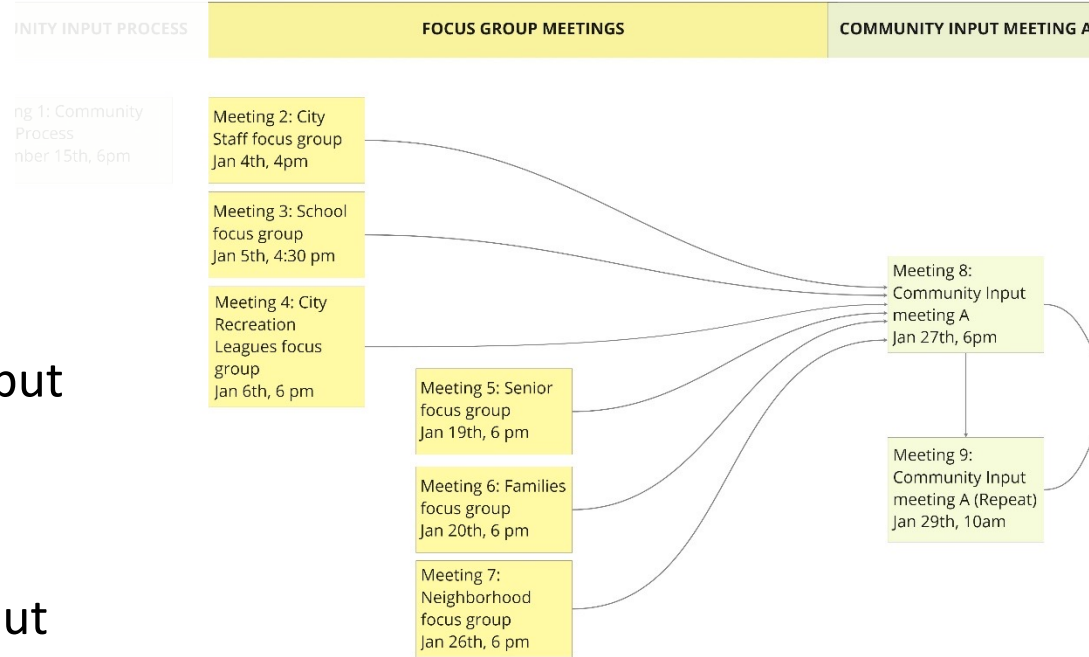
# Process Schedule

- **Meeting 2: City Staff focus group**
  - Tuesday, January 4 at 4 pm.
  - This is a meeting for city staff input
- **Meeting 3: School focus group**
  - Wednesday, January 5 at 4:30pm
  - This is a meeting for school users input
- **Meeting 4: City Recreation Leagues focus group**
  - Thursday, January 6 at 6 pm
  - This is a meeting for city sports group users input



# Process Schedule

- **Meeting 5: Senior focus group**
  - Wednesday, January 19 at 6 pm.
  - This is a meeting for seniors input
- **Meeting 6: Families focus group**
  - Thursday, January 20 at 6 pm
  - This is a meeting for families with young children input
- **Meeting 7: Neighborhood focus group**
  - Wednesday, January 26 at 6 pm.
  - This is a meeting for Monta Loma neighborhood input



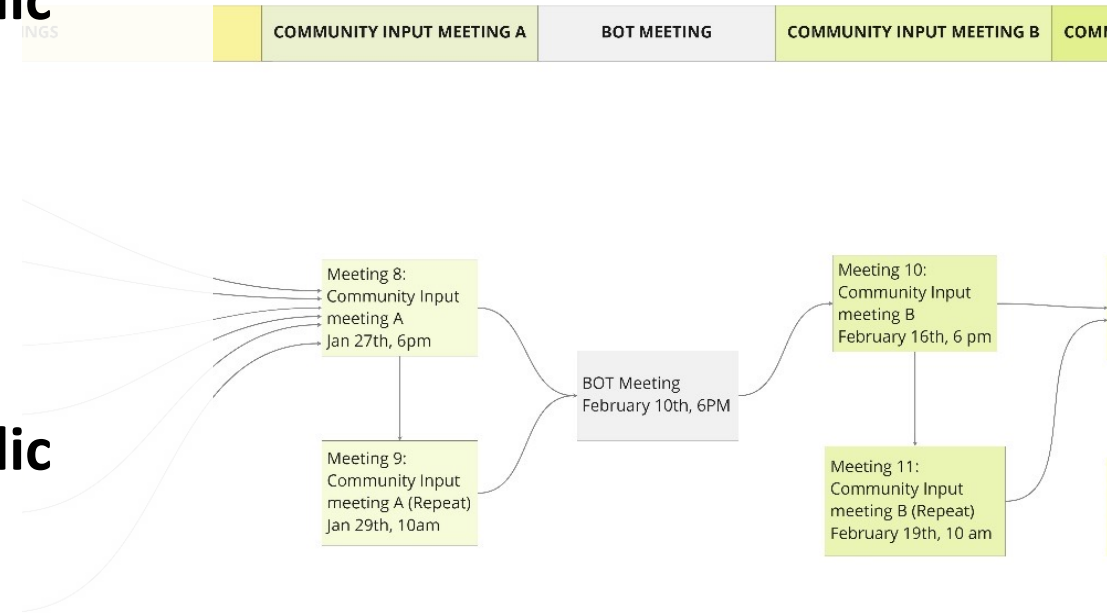
# Process Schedule

- **Meeting 8: Community input meeting A - Public**

- Thursday, January 27 at 6 pm
- First Community input meeting series “A”
- Recap focus group input
- Collect community input

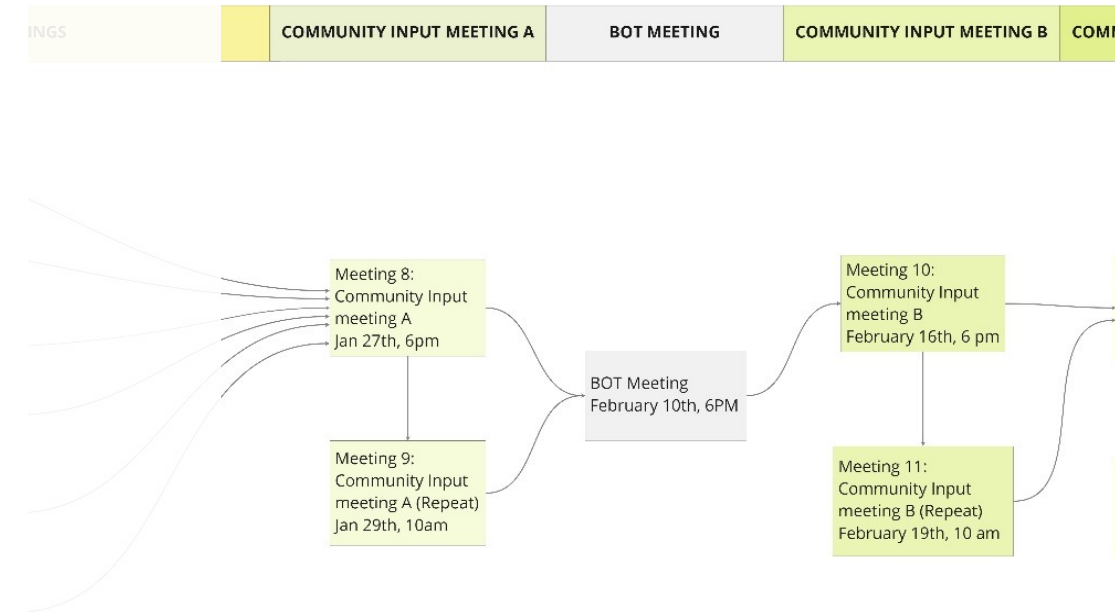
- **Meeting 9: Community input meeting A - Public (Repeat)**

- Saturday, January 29 at 10 am
- This is repeat of meeting 8 to give public second opportunity to participate



# Process Schedule

- **MVWSD Board of Trustees Meeting - Public**
  - Thursday, February 10 at 6 pm
  - Recap focus group and community input



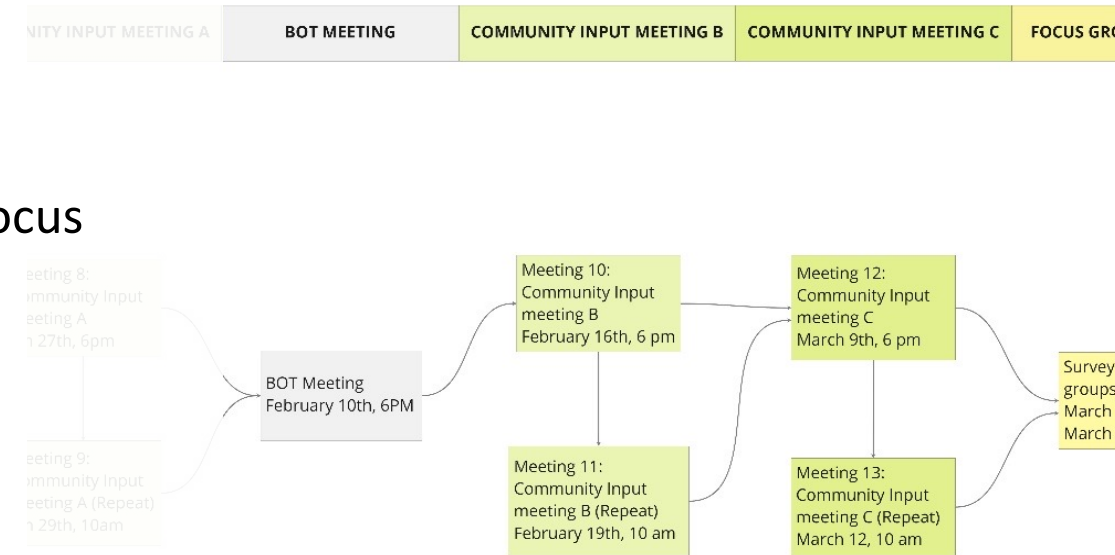
# Process Schedule

- **Meeting 10: Community meeting B**

- Wednesday, February 16 at 6 pm
- Second Community input meeting series “B”
- Present master plan options based on input from focus groups and community meeting A
- Gather input on preferred options
- Additional input

- **Meeting 11: Community meeting B (Repeat)**

- Saturday, February 19 at 10 am
- This is repeat of meeting 10 to give public second opportunity to participate



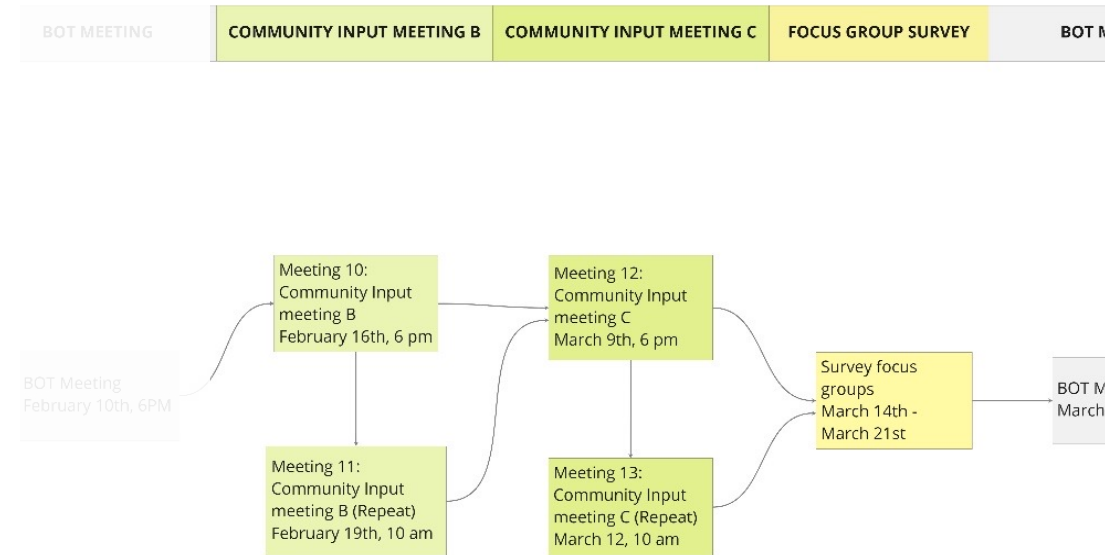
# Process Schedule

- **Meeting 12: Community meeting C**

- Wednesday, March 9 at 6 pm
- Third Community input meeting series “C”
- Recap master plan options results
- Present preferred master plan
- Input on preferred master plan

- **Meeting 13: Community meeting C (Repeat)**

- Saturday, March 12 at 10 am
- This is repeat of meeting 12 to give public second opportunity to participate





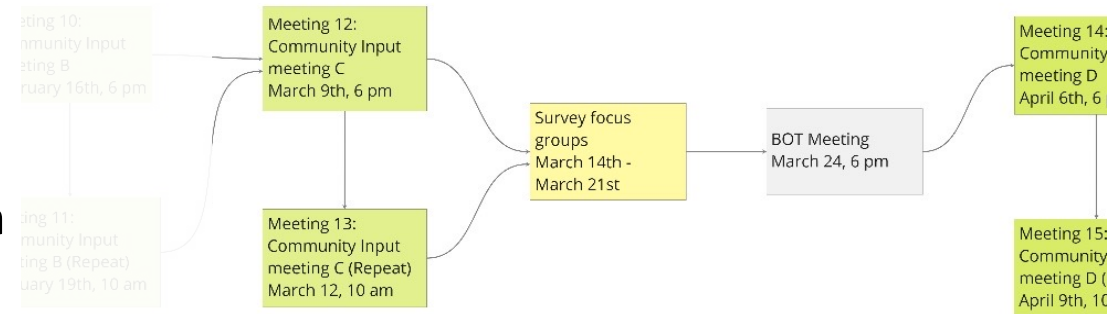
# Process Schedule

- **Focus Group Survey**

- Monday, March 14 through Monday, March 21
- Survey focus groups to get input on preferred master plan

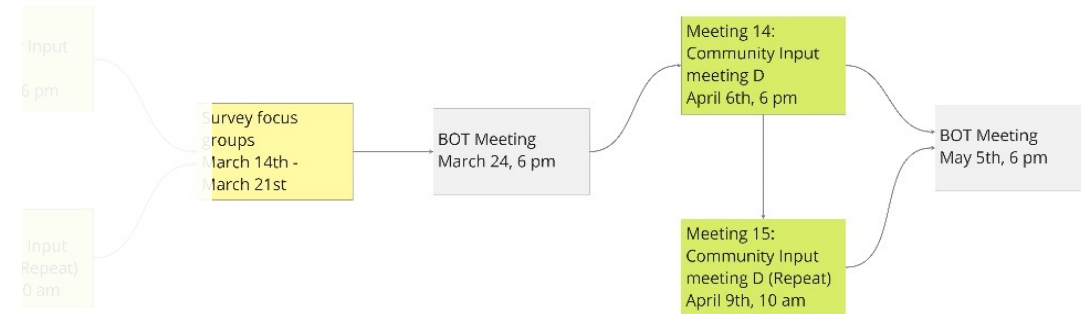
- **MVWSD Board of Trustees Meeting – Public**

- Thursday, March 24 at 10 am
- Review community input and preferred master plan



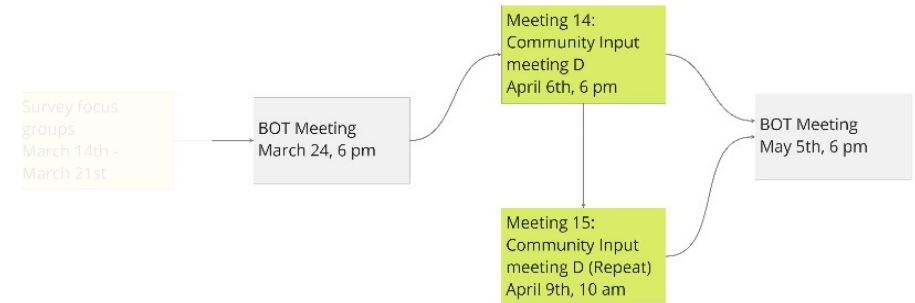
# Process Schedule

- **Meeting 14: Community meeting D**
  - Wednesday, April 6 at 6 pm
  - Fourth Community input meeting series “D”
  - Present refined master plan
  - Input on refined master plan
- **Meeting 15: Community meeting D (Repeat)**
  - Saturday, April 9 at 10 am
  - This is repeat of meeting 14 to give public second opportunity to participate



# Process Schedule

- **MVWSD Board of Trustees Meeting – Public**
  - Thursday, May 5 at 6 pm
  - Recap master plan and community input
  - Master plan approval to start Schematic Design



# Focus Group A Input Plan

- Maintenance access is through asphalt path as shown in purple
- Snack Shack & Public Restroom are subject to vandalism
- Public access from neighborhood gates are open 24 hours and not well lit
- T-ball backstop in multi-use field is not a need





# Focus Group B Input Plan

- Backstop located in the multi-use field is not used by the School
- PE Class is conducted near grove of Redwood trees and top portion of the multi-use field
- Enlarged kinder yard is desired
- Multi-use field is used as an exercise loop for the kids and the community





# Focus Group C Input Plan

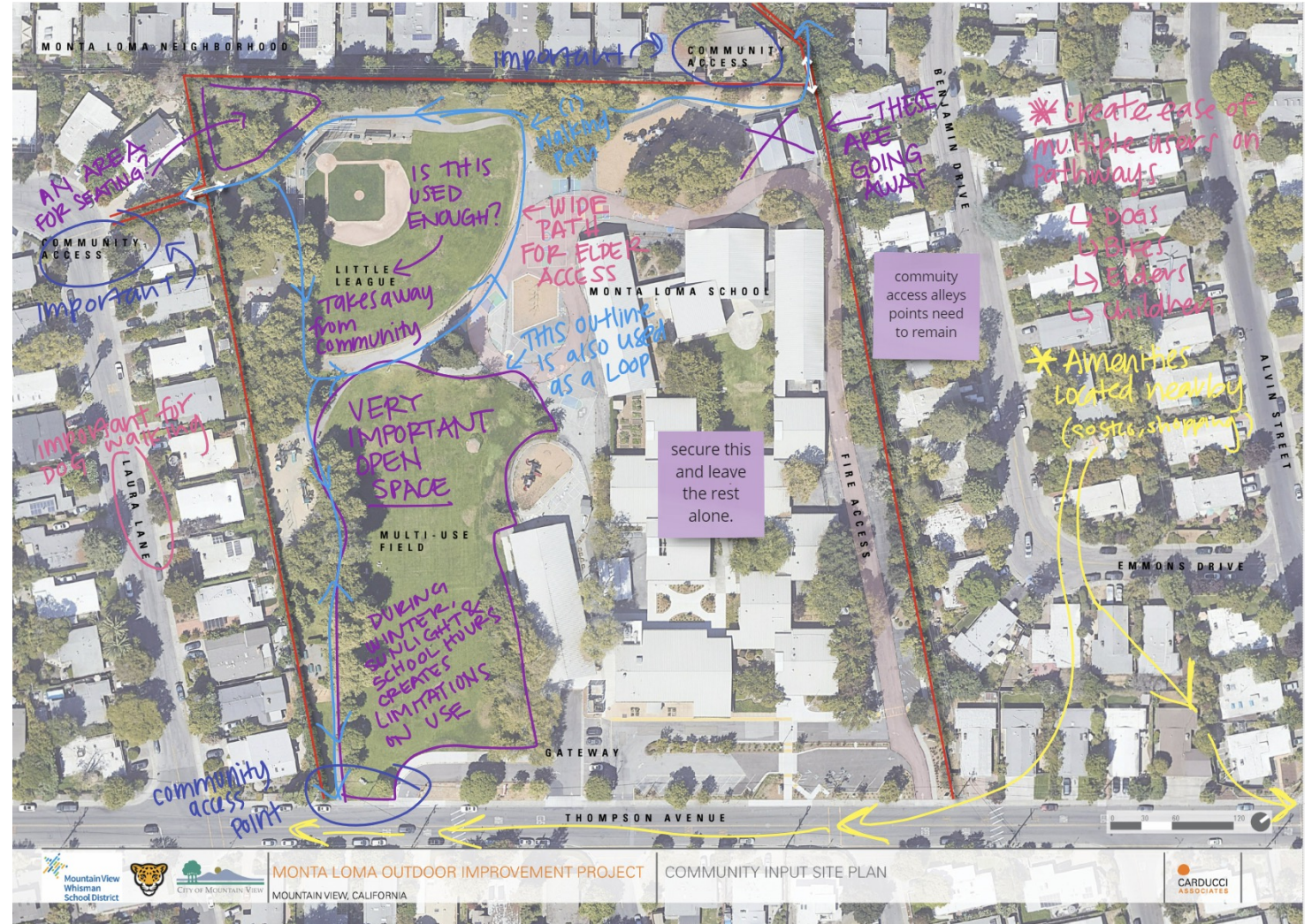
- Backstop located in the multi-use field can be converted into a portable backstop
- Multi-use field is used for recreational soccer and spectators use the area beneath the trees
- Hard to maintain the condition of the lawn with the recreational soccer use





# Focus Group D Input Plan

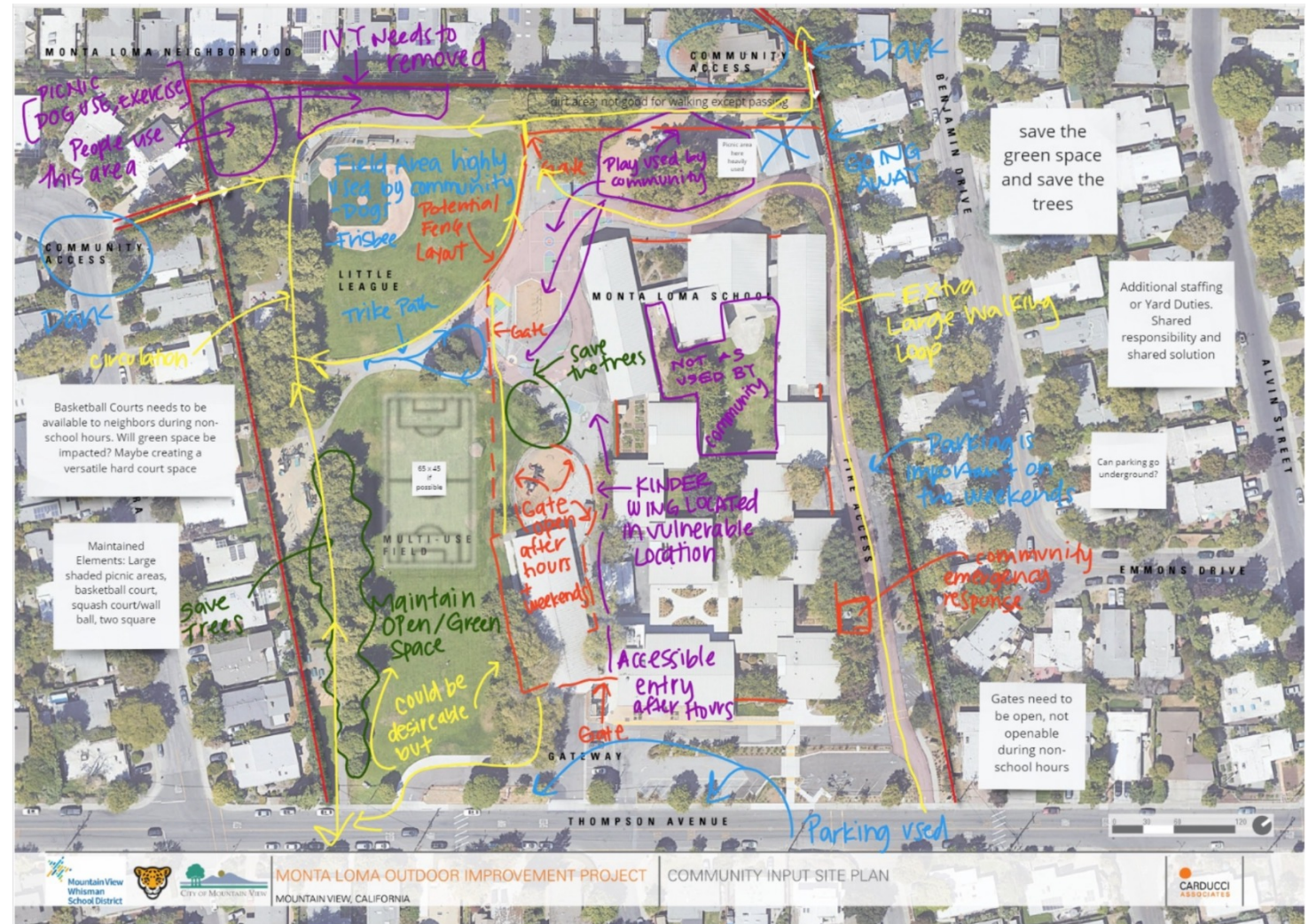
- Multi-use field is important as a strolling/fitness loop, and use by the community
- During winter, sunlight and school hours create limitations by the community on the multi-use field with current pilot program





# Focus Group E Input Plan

- Circulation around the multi-use field and little league field is important for access, fitness, and strolling.
- Large shaded lawn areas are used as picnic, open play and gathering.
- Little league areas are used by community for dogs, and frisbee.





# Community Meeting A Input Plan (01/27/2022)

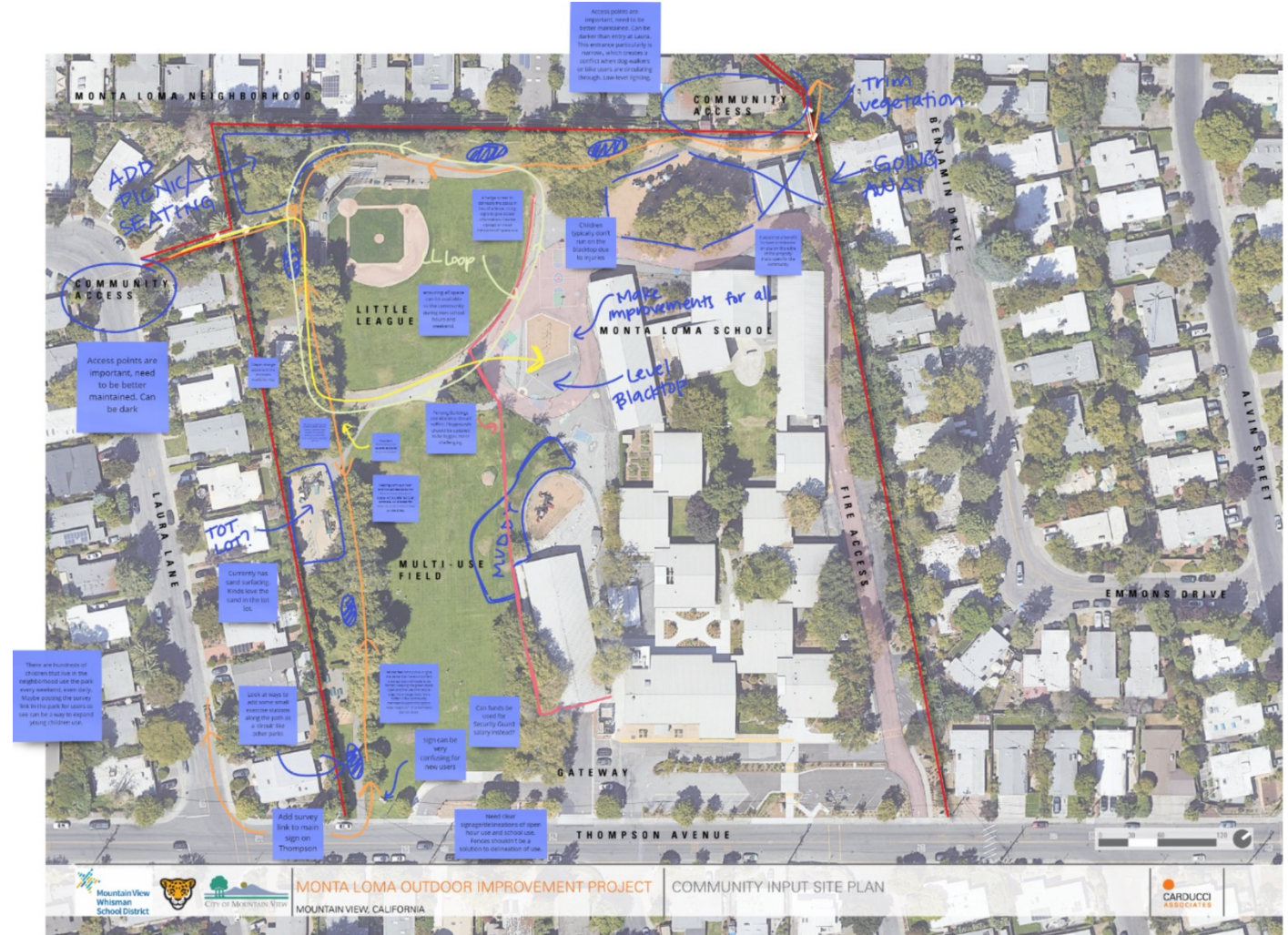
- Multi-use field area is incredibly important to maintain
- Multi-use field should remain as open recreational space and City should explore moving soccer to another park space that can accommodate
  - Maybe soccer field can fit on the little league field
- Backstop is used occasionally





# Community Meeting A (Repeat) Input Plan (01/29/2022)

- Multi-use field space adjacent to tot lot is important
  - High visibility to watch children
  - Allow children to move fluidly from tot lot to green space
- Keeping the multi-use field open and use of a natural edge like a hedge feels softer than a fence
  - Delineate but do not block





# Community Meeting B Input Plan (02/16/2022)

- #1 priority is to maintain open space and access to the open space to community at all hours
- Consider other site changes like removing the little league field or reconfiguring the school to create more green space for the school
  - Interconnectivity is important





# Community Meeting B (Repeat) Input Plan (02/19/2022)

- Multi-use field is used for birthday parties, flying planes, and open play
- Connectivity of the tot lot to the multi-use field is important
- Multi-use field can also be used for community theater, evening concerts, meet families, and other outdoor events.

