



Mountain View
Whisman
School District

Choice Lottery and Enrollment Update

April 2023





Mountain View
Whisman
School District

Choice Schools in MVWSD

An Equity Challenge

Address the underrepresentation of our underserved student populations* at our choice schools while considering the legal, social, logistical, and fiscal implications.

(*Particularly with regards to students who are classified as EL and/or SED)



Mountain View
Whisman
School District

Choice Program Lottery

Race-Neutral Proxy: SED Indicator

Defining Socioeconomic Need:

- **SED Level 1:** Classified as SED by CDE (family income, direct CERT or parent education) OR family income below 185% of federal poverty level OR students with parents who have not graduated high school (students may qualify under any above flag, or all, but do not receive 'extra' weight for meeting more criteria for Level 1)
- **SED Level 2 (Relatively SED):** Family income half or less of Mountain View's median family income OR students whose parents are not high school or college graduates (students may qualify under either flag, or both, but do not receive 'extra' weight for meeting both criteria for Level 2)

Modified Tiered Weighted Lottery

Tiered and weighted lottery (*maintain sibling and staff priorities, but provide a boost for socioeconomically disadvantaged students for all remaining seats by giving these students additional entries into the lottery*)

- All siblings are prioritized for admission, followed by school and district staff, in line with current priorities.
- For all remaining seats students who are socioeconomically disadvantaged receive additional "lottery tickets" to boost their chances of admission.
 - Similar to the tiered system, the district would calculate annually how much weight to provide to socioeconomically disadvantaged applicants based on the applicant pool and goal for enrollment of this group

Lottery Waitlist

- Since SED students receive additional weight, they have additional opportunities to receive a higher lottery number, which can mean a placement at school or high order on waitlist

SED Thresholds for 23-24 lottery

- **“SED Level 1 Students”**: Classified as SED by CDE (family income, direct CERT or parent education) OR family income below 185% of federal poverty level OR students with parents who have not graduated high school*
- **“Relative SED Students”**: Family income half or less of Mountain View’s median family income (\$204,000, less than half would be \$104,000 or less) OR students whose parents are not high school or college graduates * (Based on 2021, 1-year ACS data available here: <https://data.census.gov/>)

* Students may qualify under any above criteria, but do not accumulate ‘extra’ lottery entries for meeting more than one criteria

Weights for Student Groups

- Used the enrollment and applicant data from the prior school year (2021-2022) to be able to determine weights with enough time to ensure transparency in communication before start of enrollment for new families
- Determined enrollment target for SED students and determine eligible student populations
 - Target: 27% SED enrollment aligned with district average
 - At Mistral, 50% of applicant pool is SED so no additional weight is awarded for SED applicants at this site for this coming school school

Weights for Student Groups

- Calculated weights for SED students at eligible schools for 23-24 school year:
 - SED Level 1 students received a weight of 400, meaning 400% of what a 'typical student would receive' (akin to 4x)
 - Calculations determined for SED Level 2 students is 1 (or 100%) less than SED Level 1, which means Level 2 students will be given a weight of 300, meaning 300% of what a 'typical student would receive' (akin to 3x)
 - These figures will change every year based on applicant pool and district enrollment averages of previous year



Mountain View
Whisman
School District

Lottery Results for 23-24 School Year

Lottery Application Data by Grade

Stevenson Elementary School, Grade-Level

Grade Level	22-23	23-24	Change
K	174	192	+18
1	87	78	-9
2	83	67	-16
3	29	93	+64
4	42	19	-23
5	19	37	+18
Total	434	486	+52

Mistral Elementary School, Grade-Level

Grade Level	22-23	23-24	Change
K	76	67	-9
1	6	9	+3
2	5	8	+3
3	7	5	-2
4	5	4	-1
5	2	6	+4
Total	101	99	-2

Lottery Application Data by SES

Stevenson Elementary School, Grade-Level

Grade Level	22-23	23-24	Change
SED	27	45	+18
RSED	N/A	87	+87
None	407	354	-53
Total	434	486	+37

Mistral Elementary School, Grade-Level

Grade Level	22-23	23-24	Change
SED	31	39	+8
RSED	N/A	27	+27
None	70	34	-36
Total	101	99	-2

Lottery Seated Data by Grade

Stevenson Elementary School, Grade-Level

Grade Level	22-23	23-24	Change
K	72	72	0
1	4	1	-3
2	2	1	-1
3	9	0	-9
4	1	19	+18
5	5	1	-4
Total	93	94	+1

Mistral Elementary School, Grade-Level

Grade Level	22-23	23-24	Change
K	72	67	-5
1	6	4	-2
2	0	0	0
3	0	0	0
4	0	0	0
5	0	0	0
Total	78	71	-7

Lottery Seated Data by SES

Stevenson Elementary School, Grade-Level

Grade Level	22-23	23-24	Change
SED	4	11	+7
RSED	N/A	24	+24
None	89	59	-30
Total	93	94	+1

Mistral Elementary School, Grade-Level

Grade Level	22-23	23-24	Change
SED	22	24	+2
RSED	N/A	21	+21
None	56	26	-30
Total	78	71	-7

Waitlist Data by Grade

Stevenson Elementary School, Grade-Level

Grade Level	22-23	23-24	Change
K	100	120	+20
1	83	77	-6
2	81	66	-15
3	20	93	+73
4	41	0	-41
5	14	36	+22
Total	339	392	+53

Mistral Elementary School, Grade-Level

Grade Level	22-23	23-24	Change
K	4	0	-4
1	0	5	+5
2	5	8	+3
3	7	5	-2
4	5	4	-1
5	2	6	+4
Total	23	28	+5

Waitlist Data by SES

Stevenson Elementary School, Grade-Level

Grade Level	22-23	23-24	Change
SED	23	34	+11
RSED	N/A	63	+63
None	316	295	-21
Total	339	392	+53

Mistral Elementary School, Grade-Level

Grade Level	22-23	23-24	Change
SED	9	15	+6
RSED	N/A	6	+6
None	14	7	-7
Total	23	28	+5

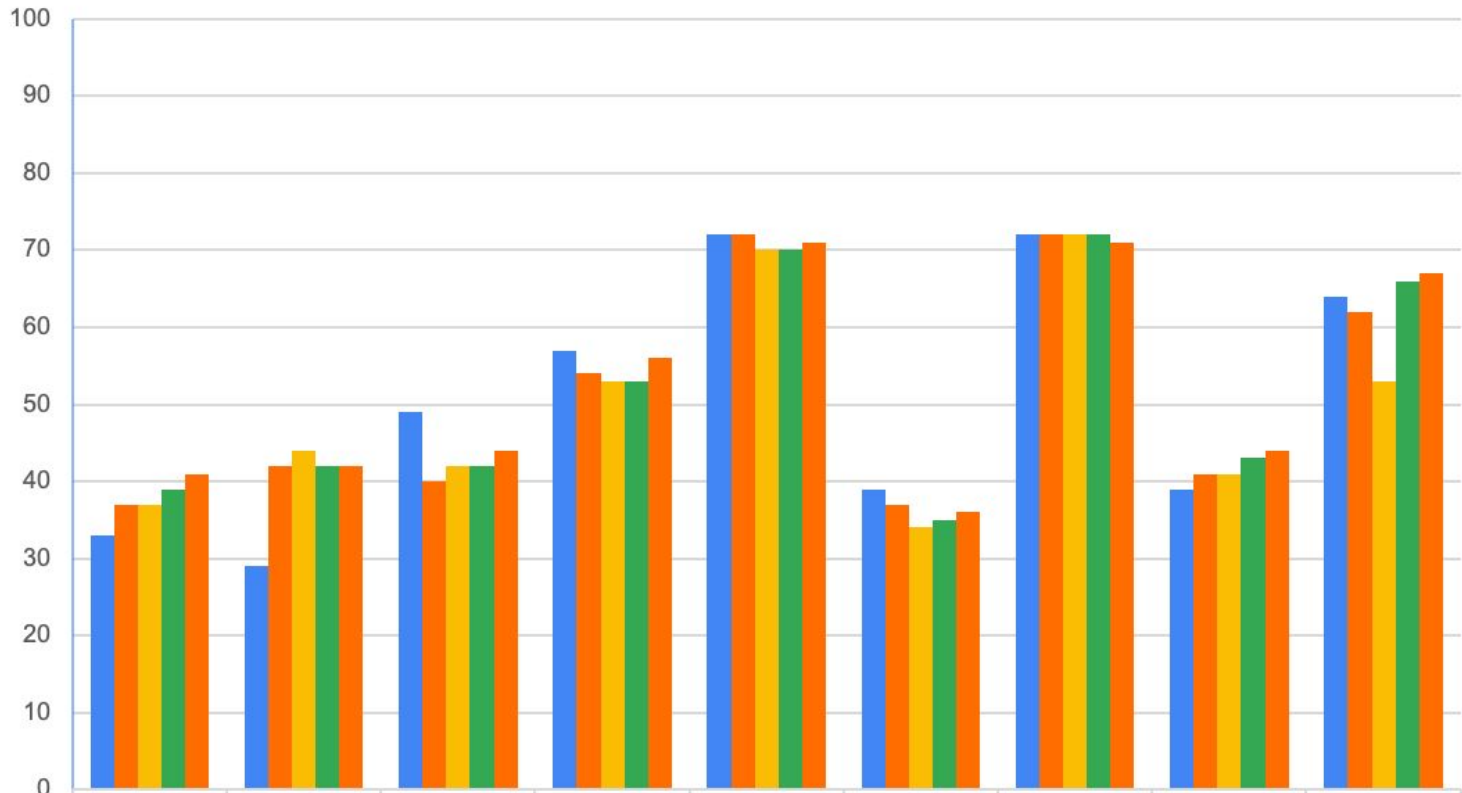
Seated Data by Neighborhood Zone

	ST 23-24	MI 23-24
Bubb	6	4
Castro	9	29
Imai	4	2
Landels	16	15
Monta Loma	9	4
Theuerkauf	24	7
Vargas	21	8

Key Takeaways

- Overall, applications from families new to our choice programs is up 12% from last year at Stevenson and down 2% from last year at Mistral
- This year, the lottery created an environment that helped facilitate a 175% increase in SED students seated at Stevenson [4 to 11] along with 9% increase of SED students at Mistral (though weights were not applied to SED applicants at Mistral this year).
- The relative SED indicator helped usher in 24 students at Stevenson and another 21 relative SED students at Mistral this cycle. This is a local indicator, which will be calculated annually based on MV median income for families.

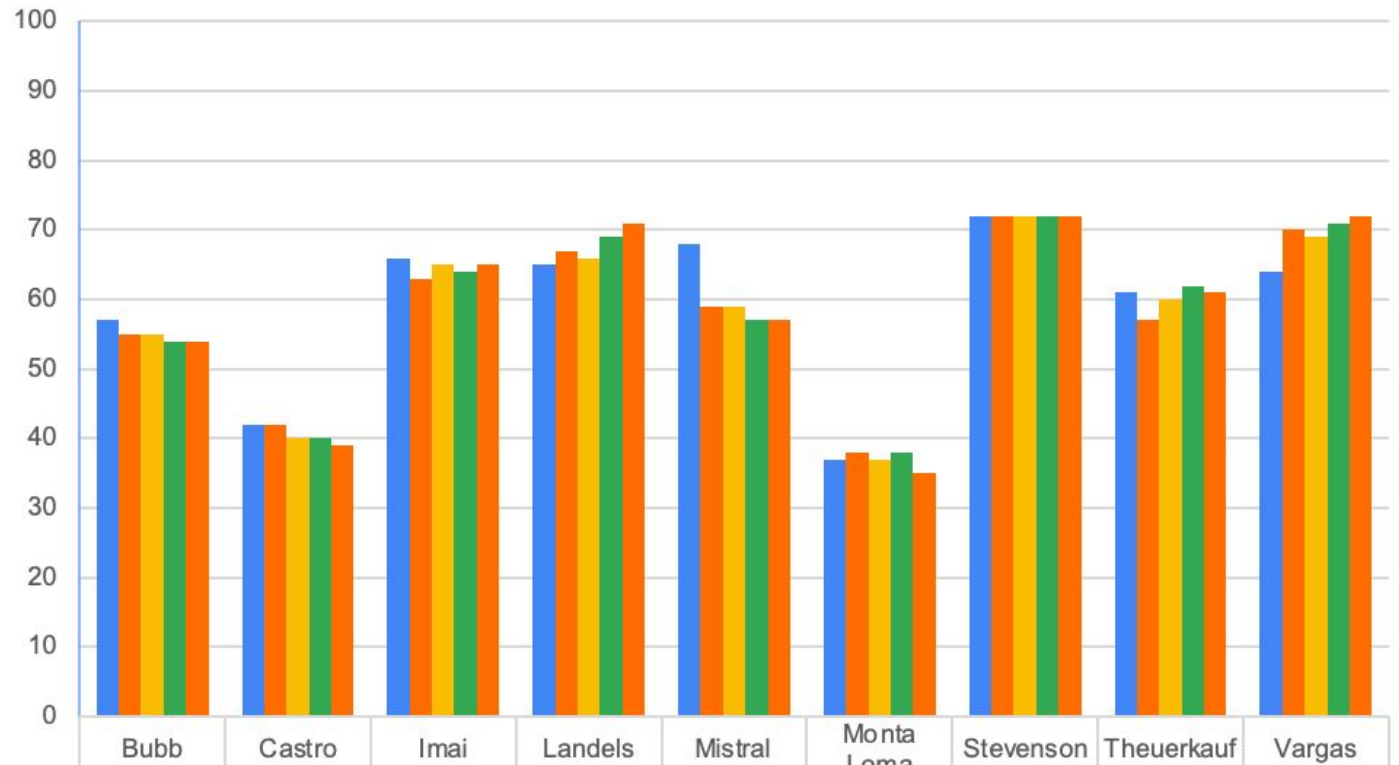
Grade K Enrollment



	Bubb	Castro	Imai	Landels	Mistral	Monta Loma	Stevenson	Theuerkauf	Vargas
■ 22-23 March open enrollment	33	29	49	57	72	39	72	39	64
■ 22-23 (Aug)	37	42	40	54	72	37	72	41	62
■ 22-23 (Oct)	37	44	42	53	70	34	72	41	53
■ 22-23 (Dec)	39	42	42	53	70	35	72	43	66
■ 22-23 (March)	41	42	44	56	71	36	71	44	67

General Education
Class size average: 24

Grade 2 Enrollment



	Bubb	Castro	Imai	Landels	Mistral	Monta Loma	Stevenson	Theuerkauf	Vargas
■ 22-23 (as of March open enrollment)	57	42	66	65	68	37	72	61	64
■ 22-23 (Aug)	55	42	63	67	59	38	72	57	70
■ 22-23 (Oct)	55	40	65	66	59	37	72	60	69
■ 22-23 (Dec)	54	40	64	69	57	38	72	62	71
■ 22-23 (March)	54	39	65	71	57	35	72	61	72

General Education
Class size average: 24

Enrollment Projections for 2023-24

	TK	K	1	2	3	4	5	Total
BU	n/a	48	46	53	56	54	65	322
CA	20	25	43	35	44	35	52	254
IM	32	50	48	73	64	63	68	398
LA	n/a	50	59	87	74	48	56	374
MI	20	67	73	65	57	51	53	386
ML	27	29	34	43	36	38	39	246
ST	n/a	72	72	72	72	86	90	464
TH	40	61	50	48	60	33	48	340
VA	n/a	62	71	54	76	45	58	366

Enrollment Projections for 2023-24

	6	7	8	Total
CR	197	171	169	537
GR	296	303	281	880

*Numbers reflect General Education classes

Enrollment

Neighborhood school enrollment is impacted by the choice school lottery.

- All initial lottery placements are “seated” at the choice school
- Waitlisted students are “seated” at their neighborhood school until an offer becomes available for them to move to a choice program
- Some families enroll in our district in hopes of getting a choice school placement. If they don’t get the choice school, they may select private school instead
- Once the school year starts, enrollment at choice schools remains fairly stable
- When new families move into the community throughout the year, they must enroll at their neighborhood school since choice school lottery applications are only available during the open enrollment period



Mountain View
Whisman
School District

Next Steps

Lottery

The lottery was run with the priorities and weighted lottery system approved for 2023-24

- Did this meet the Board's intent?
- Are there any adjustments to the priorities or weighted system that are required?

We will come back to BOT to present updated weights and calculations (OCT 2023)

Enrollment

This year, we will hire additional teachers as we predict class sizes and enrollment trends at elementary and middle schools

- If we still have additional students enrolling throughout the year and end up above capacity, is it the desire of the board that we...
 - Place students who enroll mid year at their neighborhood school with possible overloads
 - Place new students at the nearest site with space for the remainder of the year
 - Create combination classes when the need arises