



# MULTI-SITE ASSESSMENT SUMMARY REPORT

DELIVERED TO:



PREPARED BY:

Elizabeth Rupert  
Joffe Emergency Services

DELIVERED:

Feb 24, 2023

*We are fully dedicated to empowering organizations to build safer communities.*

# Table Of Contents

<b>Summary of Recommendations:</b>	<b>2</b>
Overarching District Themes and Recommendations:	3
<b>Campus Specific Priority Recommendations</b>	<b>7</b>
Crittenden Middle School	7
Graham Middle School	8
Edith Landels Elementary	9
Benjamin Bubb Elementary School	10
Mariano Castro Elementary	11
Jose Antonio Vargas Elementary	12
Stevenson Elementary	13
Monta Loma Elementary	14
Amy Imai Elementary	15
Gabriela Mistral Elementary	16
Latham Preschool	17
Theuerkauf Elementary	18
<b>School Crime Maps and Sex Offender Data</b>	<b>19</b>
Crime Data	20
Sex Offender Data	22
<b>Nearby Hazards</b>	<b>23</b>
FIRE	24
EARTHQUAKE	25
FLOODING	26
<b>Timeline for Recommended Course Of Action:</b>	<b>27</b>
• Spring 2023	27
• Summer 2023	27
• Fall 2023	27

# Summary of Recommendations:

## Project Overview:

Mountain View Whisman School District (MVWSD) engaged with Joffe Emergency Services (Joffe) to provide a comprehensive site assessment of the MVWSD schools to identify safety and security vulnerabilities on campus and recommend strategic changes. Joffe visited Crittenden Middle School, Isaac Newton Graham Middle School, Edith Landels Elementary School, Amy Imai Elementary School, Benjamin Bubb Elementary, Mariano Castro Elementary, Gabriela Mistral Elementary, Latham Preschool, Jose Antonio Vargas Elementary, Stevenson Elementary, Theuerkauf Elementary, and Monta Loma Elementary in January and February of 2023.

Joffe used a standardized approach for each campus that included a physical walk-through of each campus and interviews with staff members of the Mountain View Whisman campuses and district-wide teams. Joffe observed one to two schools per day with a specific focus on understanding each campus in its entirety and assessing the capabilities within:

1. Physical and Environmental
2. Current Protocols and Communications
3. Psychological and Social-Emotional
4. Health and Wellness
5. Tech and Cyber Security

A full assessment outline of our findings at each campus, as well as their individual audit spreadsheets, are included in the [Assessment Folder](#). The purpose of this summary report is to present the themes observed as well as highlight the highest priority items identified by Joffe and discussed with MVWSD staff. These findings are also noted in detail within the individual spreadsheets. For district success, Joffe recognizes the need for standard protocols surrounding emergency management procedures and for those protocols and procedures to be upheld by all schools within the Mountain View Whisman School District.

# Overarching District Themes and Recommendations:

## Key recommendations:

### → Access Control

#### ◆ Gates

Preparations were made to install badge-lock systems on each gate, but this has been delayed due to supply issues. As a result, most sites are unable to secure gates. Contingency plans are needed to ensure sites can properly enforce access policies and reduce the likelihood of elopement. Possible solutions include:

- Additional staff to monitor gates
- Motion sensors or alarms to notify staff of gate usage
- Passive monitoring of gates via security cameras
- Third-party security services to monitor cameras and sweep/patrol perimeter

#### ◆ Shared Spaces

Multiple sites report individuals using fields, playgrounds, and walkways during prohibited times despite posted notices. Instances of unleashed dogs and members of the public interacting with students are particularly concerning. Even if members of the public are using the fields respectfully, interactions with staff may escalate, detract from educational time, and prevent rapid threat assessment. Additionally, public areas of many campuses are not visible from roadways, which prevents adequate monitoring by local police after hours. As a result, campuses experience vandalism and must sweep for trespassers before student arrival. The following recommendations are proposed in order to address these concerns:

- Discontinuation of public access to playgrounds within a certain proximity of classrooms via amendments to agreements
- Installation of additional fencing between fields and classroom/recess areas
- Incident logs to document public usage during prohibited hours
- Guidelines to assist staff in making the determination to contact law enforcement in lieu of engagement
- De-escalation training for staff responsible for perimeter security
- Third-party security personnel to patrol and respond after hours or Memoranda of Understanding (MOUs) with Mountain View PD to increase surveillance
- Integration of external motion-activated sensors into security alarm systems, with or without audible alarm activation, to alert District Administration to the presence of trespassers after hours

- Hours of use signs that are more concise and posted at each entry point
- ◆ Visitor Management
 

Parents routinely bypass the front office when delivering items during the school day or meeting students for early dismissal. Members of the public also use campus as a throughway. In addition to securing gates, these suggestions can increase compliance with visitor policies:

  - Clear, permanent signage on the inside and outside of campus perimeter informing visitors of entry and exit policies. This is particularly important for all gates.
  - Clear signage indicating location of the front office, especially at libraries entrances outside of perimeter fencing.
  - Training for staff regarding challenging persons without a visitor badge
  - Procedural changes to early dismissal process so that students meet parent/authorized person in front office
- ◆ Front Office Security
 

Front office doors are kept unlocked to allow visitor entrance, but this poses a safety and security risk. Individuals that pose a threat must be locked into the office with staff and may still enter campus through adjoining rooms and hallways. The best mitigation strategy is to screen visitors as thoroughly as possible before permitting entry to the front office. Potential screening mechanisms include:

  - Remote-operated lock systems with good camera visibility and two-way communication
  - External Raptor stations enabled for user input of identification information, preferably via scanning of ID
  - Badge-Entry systems such as SchoolPass
- Emergency Equipment
  - ◆ Fire Sprinkler Systems
 

In order to increase safe evacuation time and reduce the impact of fires, fire sprinkler systems should be installed in the following locations:

    - All Campus Buildings
  - ◆ Emergency Postings
 

All individuals, including students and substitute teachers, should have easy access to abbreviated emergency procedures. The following information should be posted in all classrooms and workspaces:

    - At-A-Glance Procedures

→ Emergency Procedures and Protocols

◆ Earthquake Drills

Currently only one earthquake or drop-cover-hold drill is planned in October of each year. Additional drills should be added in accordance with California Education Code CA EC Section 32282(a)(2)(B)(i):

- At least one per quarter for elementary schools
- At least one per semester for secondary schools

◆ District and Site Safety Plans

Support is needed to ensure that plans are updated promptly, utilize standard protocols, and made available to relevant stakeholders. In addition, responses to the following segments should be added to existing plans:

- Allergic Reactions
- Emergencies during Arrival and Departure
- Off-Campus Evacuation
- Staff Attendance
- Emergencies during Field Trips

◆ Safety Committees

At most sites, the site council delegates duties related to safety. However, a dedicated safety committee can address a wider variety of issues and develop more specific knowledge. Effective safety committees should:

- Address workplace safety concerns related to occupational health
- Include certificated and classified staff
- Provide participation opportunities for external stakeholders such as families, local businesses, and community members
- Work with local emergency responders and CERT representatives in the development of site plans

◆ Emergency Notification System (ENS)

School messenger, in conjunction with Powerschools, is the current ENS. However, most sites are unsure of how it can be utilized at the site-level during an emergency. This is particularly true if the District Office was not able to provide support due to the conditions of the emergency. Training on the ENS should include:

- Basic principles of emergency communication
- System characteristics and operation
- Accessing contact lists and templates

◆ Community Emergency Response Teams (CERT)

The City of Mountain View has worked with residents to establish CERT in each neighborhood. This is a significant asset during a community-wide emergency. All sites should reach out to their CERT representative to establish:

- Joint training opportunities

- Coordinated response plans
- Site-based ambassador programs

→ Mental Health

◆ Hotline for Anonymous Reporting

Creating a way for students to anonymously report concerns increases the likelihood that staff will be able to identify safety risks prior to incidents.

There are several ways to allow anonymous reporting:

- Google Form with QR code and widgets or links
- App-based systems such as Say Something or Vector LiveSafe
- Helpline services such as Safe School Helpline

◆ Behavior Threat Assessment Team (BTAT) and Crisis Response Teams (CRT)

The functions of a BTAT and CRT are carried out informally by all schools. The following are suggestions to improve effectiveness and increase support for staff:

- Utilize a multi-disciplinary approach, including teachers, ARIS, SCEF, administrators, and mental health professionals in appropriate roles
- Allocate time and resources to allow for specialized training and dedicated meeting times
- Establish clearly defined roles and scopes of duty
- When drafting immediate response plans, increase reliance on staff that are on-site
- Formalize appropriate systems of non-disciplinary, long-term monitoring follow a crisis or behavioral intervention

# Campus Specific Priority Recommendations

## Crittenden Middle School

### High Priority Recommendations:

- Current Protocols and Communication
  - Student reunification information
    - i. Student reunification information is not present in emergency backpacks.
      - 1. Include paper copies of student reunification information and classroom rosters in emergency backpacks.
  - Evacuation
    - i. The field is a designated evacuation location but the access gate is locked.
      - 1. The gate should be reconfigured so that it is unlocked from the school side and locked from the field to allow rapid access during evacuation.
  - School-Wide Messaging
    - i. Additional school-wide messaging systems, such as GChat, are not currently utilized.
      - 1. Assistance may be needed from the Communication Department to develop alternative messaging plans and provide training.
  - Emergency Notification System (ENS)
    - i. School messenger, in conjunction with Powerschools, is the current ENS. However, staff are not sure of how it can be utilized at the site-level during an emergency.
      - 1. Additional support is needed from the Communications Dept. to ensure that staff can operate the ENS when necessary and understand the expectations for use.
- Health
  - CPR / First Aid / AED Certifications
    - i. District nursing staff offer necessary courses, but there is some uncertainty with regards to the status of staff certifications.
      - 1. Sites need a system for monitoring certification status, as well as information on how to arrange training.
  - Treatment Protocols



- i. Efforts are needed to increase awareness and utilization of treatment protocols and treatment logs.
  1. Treatment protocols should be included in the treatment area.
  2. Additional training and follow-up with nursing staff is needed to increase compliance with log procedures.

## **Graham Middle School**

### **High Priority Recommendations:**

- Physical and Environmental
  - Athletic Center
    - i. Athletic center is in need of significant repairs. Holes in walls, broken tile, and leaking (with potential mold) has made the gym unsafe for staff and students. Some issues, such as roof leaks, are recurring and have a history of improper repair.
      1. Support is needed from the District Office to ensure that all parties are upholding usage agreements.
      2. Student activities may need to be relocated until repairs are made and it is determined that there is no mold in the building.
  - Pedestrian Safety
    - i. Parents frequently stop in the bus lane on Castro. Additionally, students will cross through 2-3 rows of arrival/departure traffic to enter campus.
      1. Traffic patterns should be re-evaluated to improve pedestrian safety.
      2. Additional monitoring and communication is needed to improve parent/family compliance with traffic policies.
- Current Protocols and Communication
  - Evacuation
    - i. Additional off-site evacuation location not specified in emergency plan.
      1. Identify an off-site location and include in plans moving forward.
  - School-Wide Messaging
    - i. Graham does not currently have a functioning PA system, but installation of a replacement is planned.

1. Staff should be equipped with radios until replacement is complete to ensure that emergency announcements are heard.
- Psychological and Social-Emotional
    - Staffing / Training
      - i. Staff would like additional training related to mental health and other relevant topics.
        1. Future professional development opportunities covering mental health and SEL topics should be made available to all staff.
    - Behavioral Threat Assessment
      - i. Staff would like additional training regarding identifying warning signs and reporting concerns
        1. Awareness and site-specific resource training should be incorporated into the annual training plan for all staff.
  - Health
    - CPR / First Aid / AED Certifications
      - i. District nursing staff offer necessary courses, but there is some uncertainty with regards to the status of staff certifications.
        1. Sites need a system for monitoring certification status, as well as information on how to arrange training.
    - Treatment Protocols
      - i. Efforts are needed to increase awareness and utilization of treatment protocols and treatment logs.
        1. Treatment protocols should be included in the treatment area.
        2. Additional training and follow-up with nursing staff is needed to increase compliance with log procedures.

## Edith Landels Elementary

### High Priority Recommendations:

- Physical and Environmental
  - Campus Perimeter
    - i. School zone and speed reduction signs are not present in all areas.
      1. Support from the city is needed to ensure that appropriate signage is added.
  - Arrival and Departure
    - i. Traffic Pattern

1. The current traffic pattern is a significant concern. Options for improvement should be considered and supported with signage.
  2. Additional signage and staffing is needed to ensure that drivers pull all the way forward when entering the loading zone and refrain from exiting the line via the passing lane.
- ii. Crosswalks
    1. Additional crosswalks and indicators near parking lot entrances can help improve pedestrian safety.
    2. Additional staff monitoring crosswalk usage can ensure proper utilization.
  - iii. Pedestrian Routes
    1. Distinct lanes for loading versus passing should be established to prevent multiple lanes of students entering and exiting cars.
- Current Protocols and Communication
    - Emergency Supplies
      - i. Emergency food and water are not present on campus.
        1. Emergency food and water should be replenished in accordance with existing District protocols.

## **Benjamin Bubb Elementary School**

### **High Priority Recommendations:**

- Physical and Environmental
  - Perimeter Security
    - i. Elopement is a significant concern for this site.
      1. Contingency plans should be created to reduce the likelihood that elopement will occur, including additional support and security personnel.
  - Pedestrian Safety
    - i. Signs for crosswalks are not clearly visible due to low lighting during arrival on certain days.
      1. Adding flashing lights to pedestrian signs and crosswalks can improve visibility and enhance pedestrian safety.
- Psychological and Social-Emotional
  - Culture and Climate

- i. Current programs include individual and whole-class approaches to social-emotional learning and mental health, but small groups are needed to meet student needs.
  - 1. Facilitators should have experience working with students of different developmental stages and those with special needs.
  - 2. Social stories and focused small groups can help support positive behavior change.
- ii. Some classes are frequently evacuated which can undermine the climate of the learning environment.
  - 1. Additional resources are needed to help impacted students and teachers feel safe following an evacuation, as well as strengthen social cohesion.

## **Mariano Castro Elementary**

### **High Priority Recommendations:**

- Physical and Environmental
  - Doors
    - i. The library exit doors do not close without significant force. As a result, this door is often left partially open.
      - 1. The door should be repaired or replaced to restore the self-closing feature.
  - Stairs
    - i. Students are able to access upper stories during elopement events.
      - 1. Stairs should be equipped with doors that are locked at the lower level with push bars on the interior side.
      - 2. Staff should receive training related to physical intervention when students are engaged in dangerous behavior on upper story balconies.
- Psychological and Social-Emotional
  - Culture and Climate
    - i. Students need additional support to build community and reduce conflict, particularly among upper grade levels.
      - 1. A strong anti-bullying campaign can help to reinforce expectations and help students feel supported
      - 2. Peer support and mediation groups can be useful in managing conflict and facilitating positive behavior change.

- ii. Some classes are frequently evacuated which can undermine the climate of the learning environment.
      - 1. Additional resources are needed to help impacted students and teachers feel safe following an evacuation, as well as strengthen social cohesion.
    - iii. Students who frequently spend time in the resource room or ARIS office do not always have access to instructional support while away from class.
      - 1. Additional personnel are needed to ensure that learning can continue when students are not able to be in their classroom.
- Health
  - CPR / First Aid / AED Certifications
    - i. District nursing staff offer necessary courses, but there is some uncertainty with regards to the status of staff certifications.
      - 1. Sites need a system for monitoring certification status, as well as information on how to arrange training.
  - Treatment Protocols
    - i. Efforts are needed to increase awareness and utilization of treatment protocols and treatment logs.
      - 1. Treatment protocols should be included in the treatment area.
      - 2. Additional training and follow-up with nursing staff is needed to increase compliance with log procedures.

## Jose Antonio Vargas Elementary

### High Priority Recommendations:

- Physical and Environmental
  - Campus Perimeter
    - i. Certain gates are currently locked with a padlock, and plans are not in place to install a badge-entry system due to emergency access plans.
      - 1. Consider equipping the gate with a keypad entry that allows first responders to enter with a standard code.
  - Window Coverings
    - i. The front office windows do not have window coverings.
      - 1. Blinds or reflective coating should be installed to reduce visibility into the building during a lockdown. Certain reflective coating can also make the windows more difficult to break.
    - ii. Classroom door and side panel windows do not have coverings.

1. Blinds or reflective coating should be installed to reduce visibility into classrooms during a lockdown. Certain reflective coating can also make the windows more difficult to break.
- Stairs
  - i. Students are able to access upper stories during elopement events.
    1. Stairs should be equipped with doors that are locked at the lower level with push bars on the interior side.
    2. Staff should receive training related to physical intervention when students are engaged in dangerous behavior on upper story balconies.
- Psychological and Social-Emotional
  - Resources
    - i. Staff has seen an increase in concerning student behaviors within the last year, and additional support is required to ensure student needs are met.
      1. Additional personnel are needed to provide intervention services and increase the speed of service delivery plans.
  - Culture and Climate
    - i. Not all staff are able to successfully deliver curriculum related to Diversity, Equity, and Inclusion.
      1. District should provide additional training and resources for staff based on administration recommendations.

## Stevenson Elementary

### High Priority Recommendations:

- Physical and Environmental
  - Arrival and Departure
    - i. Crosswalks
      1. Traffic is significant during these times and families are not always diligent about using crosswalks.
        - a. Additional staff supervision is needed to ensure that pedestrians use crosswalks.
    - ii. Bicycle Safety
      1. The bike lane terminates at the front of the school. Cyclists do not have a safe way to turn into campus without using the sidewalk, which is often full.
        - a. Bike lanes should be extended to ensure that cyclists have a safe way to navigate into the parking lot.

2. The planned bike route is no longer usable due to Pre-K pick-up at Theuerkauf.
  - a. Bike routes should be updated whenever portions of the route become inaccessible.
- iii. Pedestrian Safety
  1. Drivers often double-park, requiring students to pass between vehicles in areas without crosswalks. Drivers also exit the line in the loading zone by passing into exterior lanes which poses a risk to pedestrians.
    - a. Evaluation of current traffic patterns and parking lot layout are needed to ensure that vehicles are unable to exit the loading area through the passing lane.
    - b. Additional staff supervision and communication to families may decrease the frequency of students exiting vehicles outside of the loading zone.

## Monta Loma Elementary

### High Priority Recommendations:

- Physical and Environmental
  - Campus Perimeter
    - i. No fences are in place due to community concerns regarding access to shared spaces.
      1. If fencing cannot be installed, dedicated security personnel are needed due to the high number of interactions with the public during school hours.
      2. District representatives and site leadership should continue advocating within the community to improve public opinion of fences. Data collected regarding incidents and safety concerns could be helpful.
      3. Ultimately, pathways should be considered for installing the fences despite local accessibility concerns.
      4. Student elopement is a significant possibility at this site, so contingency plans to prevent eloping should be created.
  - Parking and Entrance
    - i. Driving speed in the parking lot is a significant issue.
      1. Speed bumps could be a valuable tool for improving pedestrian safety

- Window Coverings
  - i. The front office windows do not have window coverings.
    1. Blinds or reflective coating should be installed to reduce visibility into the building during a lockdown.
    2. Certain reflective coating can also make the windows more difficult to break.
- Health
  - CPR / First Aid / AED Certifications
    - i. District nursing staff offer necessary courses, but there is some uncertainty with regards to the status of staff certifications.
      1. Sites need a system for monitoring certification status, as well as information on how to arrange training.
  - Treatment Protocols
    - i. Efforts are needed to increase awareness and utilization of treatment protocols and treatment logs.
      1. Treatment protocols should be included in the treatment area.
      2. Additional training and follow-up with nursing staff is needed to increase compliance with log procedures.

## Amy Imai Elementary

### High Priority Recommendations:

- Physical and Environmental
  - Access Control
    - i. Front office door cannot be locked from the inside without a key, extending the time it would take to lockdown.
      1. This door handle should be replaced to allow locking from the inside without a key.
      2. Installing a Lock Blok on this door is also a possibility.
- Psychological and Social-Emotional
  - Behavioral Threat Assessment
    - i. Staff would like additional training regarding identifying warning signs and reporting concerns
      1. Awareness and site-specific resource training should be incorporated into the annual training plan for all staff.
- Health
  - Treatment Protocols



- i. Efforts are needed to increase awareness and utilization of treatment protocols and treatment logs.
  1. Treatment protocols should be included in the treatment area.
  2. Additional training and follow-up with nursing staff is needed to increase compliance with log procedures.

## **Gabriela Mistral Elementary**

### **High Priority Recommendations:**

- Current Protocols and Communication
  - Arrival and Departure
    - i. Site safety plans do not currently include procedures for emergencies during these times.
      1. Emergency procedures during arrival and departure should be included in site EOP.
      2. Staff should receive training related to these procedures.
  - Drills
    - i. Staff would like additional drills and training related to the following topics:
      1. Incidents involving violence
      2. Crisis / behavior interventions
      3. Appropriate actions to support student compliance with procedures during an emergency
- Health
  - CPR / First Aid / AED Certifications
    - i. District nursing staff offer necessary courses, but there is some uncertainty with regards to the status of staff certifications.
      1. Sites need a system for monitoring certification status, as well as information on how to arrange training.
  - Treatment Protocols
    - i. Efforts are needed to increase awareness and utilization of treatment protocols and treatment logs.
      1. Treatment protocols should be included in the treatment area.
      2. Additional training and follow-up with nursing staff is needed to increase compliance with log procedures.

# Latham Preschool

## High Priority Recommendations:

- Physical and Environmental
  - Shared Spaces
    - i. Additional fencing should be installed to separate the play field from nearby public areas, walkways, and co-located site spaces due to elopement and security concerns.
  - Fire Alarm Systems
    - i. Classrooms are not equipped with strobing fire alarms.
      - 1. Strobes allow individuals with auditory impairments to recognize fire indicators.
      - 2. As temporary loss of hearing can occur after certain emergencies, these systems should be installed in all classroom and office spaces to maximize response.
  - Stairs
    - i. Students are able to access upper stories during elopement events.
      - 1. Stairs should be equipped with doors that are locked at the lower level with push bars on the interior side.
      - 2. Staff should receive training related to physical intervention when students are engaged in dangerous behavior on upper story balconies.
- Current Protocols and Communication
  - SRO and Relationship with Police
    - i. Site is not always notified of activity in the neighborhood that would require a lockdown or secure campus response.
      - 1. An MOU with local PD should be established to ensure that site is notified.
- Psychological and Social-Emotional
  - Resources
    - i. Due to the age group of students, sufficient mental health and behavioral resources are not always available.
      - 1. Existing district partnerships should be explored to identify additional resource avenues.
      - 2. A dedicated SCEF is needed as staff currently spend significant time providing resource support and outreach for families.
- Health and Wellness
  - Generic EpiPens

- i. Generic EpiPens are not kept on-site and staff would need to use EpiPens prescribed to other students in the event of an emergency.
  1. General-use and individual EpiPens should be stored in separate locations.
  2. Additional generic EpiPens should be obtained for use in students who do not have individual prescriptions.

## Theuerkauf Elementary

### High Priority Recommendations:

- Physical and Environmental
  - Access Control
    - i. Theuerkauf Elementary is not fully enclosed by fencing.
      1. Expansions to the existing fence are needed to improve enforcement of access control policies and reduce the risk of elopement.
      2. Contingency plans should be created to reduce the likelihood that elopement will occur, including additional support and security personnel.
    - ii. The TK gate does not fully close unless pushed and is frequently left partially open.
      1. Repairs to the TK gate are needed to ensure that it closes automatically after use.
  - Parking and Entrance
    - i. Driving speed in the parking lot is a significant issue.
      1. Speed bumps could be a valuable tool for improving pedestrian safety.
  - Window Coverings
    - i. Classroom door and side panel windows do not have coverings.
      1. Blinds or reflective coating should be installed to reduce visibility into classrooms during a lockdown.
      2. Certain reflective coating can also make the windows more difficult to break.

## School Crime Maps and Sex Offender Data

The information provided in the following Section is the city of Mountain View in Santa Clara County, California. The crime data has been sourced from [AreaVibes](#) and based on the addresses listed below for the Mountain View Whisman School District.

### Mountain View, CA

#### Crittenden Middle School

1701 Rock St.,  
Mountain View, CA 94043

#### Isaac Newton Graham Middle School

1175 Castro St.,  
Mountain View, CA 94040

#### Edith Landels Elementary School

115 West Dana St.  
Mountain View, CA 94041

#### Amy Imai Elementary School

253 Martens Ave.  
Mountain View, CA 94040

#### Benjamin Bubb Elementary

525 Hans Ave.  
Mountain View, CA 94040

#### Mariano Castro Elementary

500 Toft St.  
Mountain View, CA 94041

#### Gabriela Mistral Elementary

505 Escuela Ave.  
Mountain View, CA 94040

#### Latham Preschool

1850 Latham Street  
Mountain View, CA 94041

#### Jose Antonio Vargas Elementary

220 N. Whisman Rd.  
Mountain View, CA 94043

Stevenson Elementary  
750 San Pierre Way  
Mountain View, CA 94043

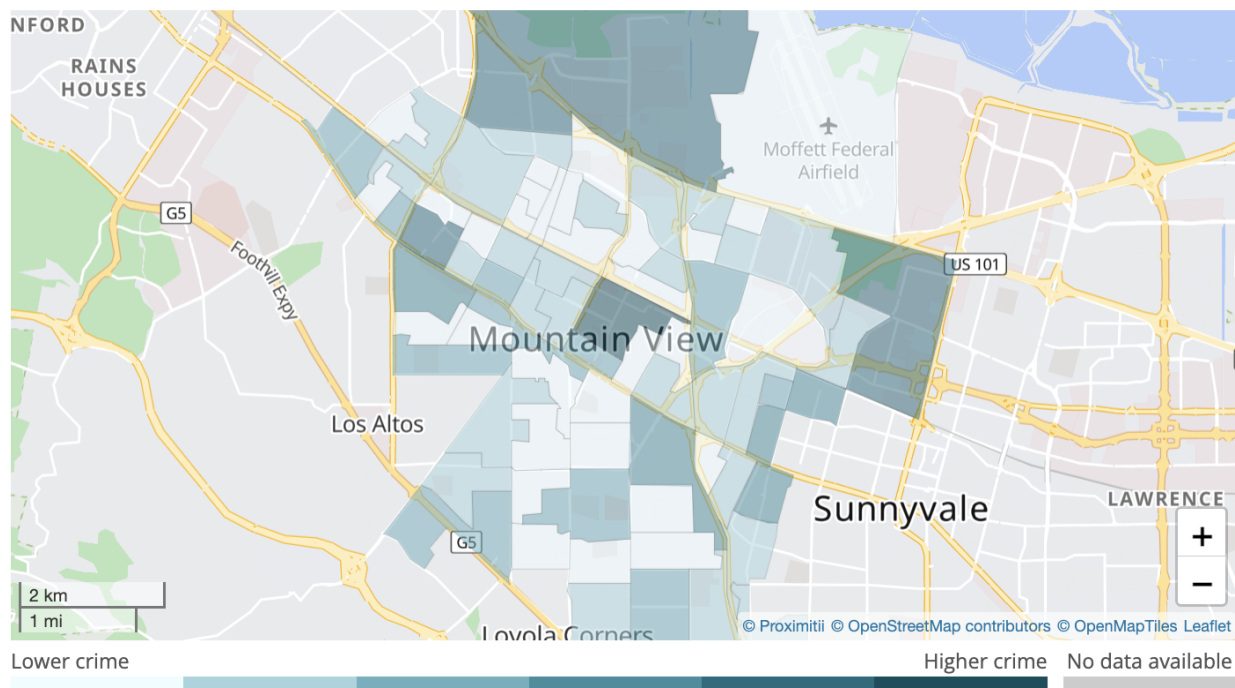
Theuerkauf Elementary  
1625 San Luis Ave.  
Mountain View, CA 94043

Monta Loma Elementary  
460 Thompson Ave.  
Mountain View, CA 94043

## Crime Data

Overall, crime rates in Mountain View are higher than average when compared to all other cities across the United States.

### Mountain View Crime Map

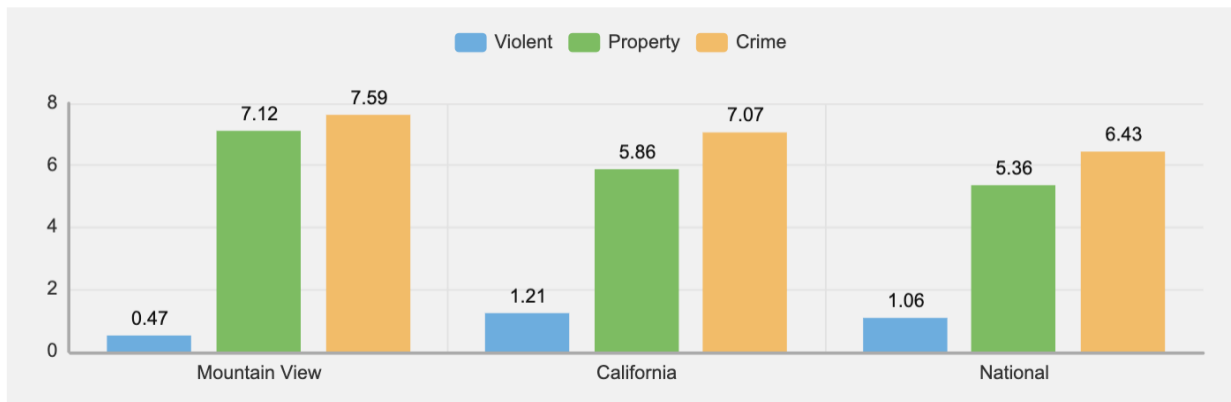


The above crime map provides a detailed overview of all crimes in Mountain View as reported by the local law enforcement agency. Based on the color coded legend above, the crime map outlines the areas with lower crime as compared to the areas with higher crime.

The Mountain View crime heat map offers insight into the total crimes on a block group level.

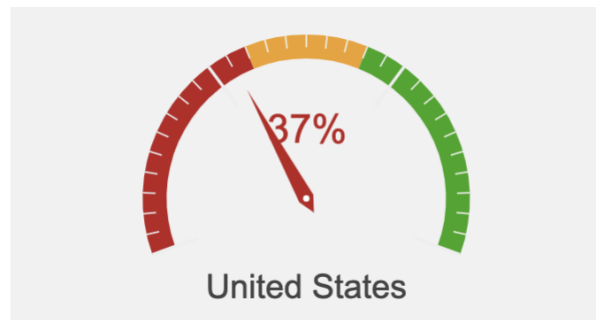
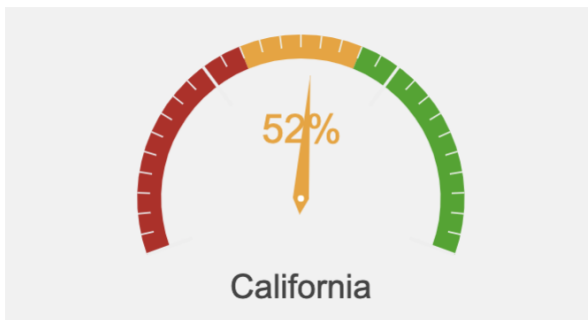
- [Mountain View](#) crime rates are 18% higher than the national average
- Violent crimes in Mountain View are 7% higher than the California average
- In Mountain View you have a 1 in 37 chance of becoming a victim of crime
- Mountain View is safer than 52% of the [cities in California](#)
- Year over year crime in Mountain View has decreased by 11%

### Daily Crime In Mountain View (Per 100,000 People)



The graph above shows the number of daily crimes per 100,000 residents in Mountain View, CA. As you can see, the daily crimes for Mountain View are 0.52 times higher than the California average and 1.16 times higher than the national average. Daily violent crimes in Mountain View are 0.74 times lower than California and 0.59 times lower than the national mean. Additionally, daily property crimes in Mountain View are 1.26 times higher than California and also 1.76 times higher than the national average.

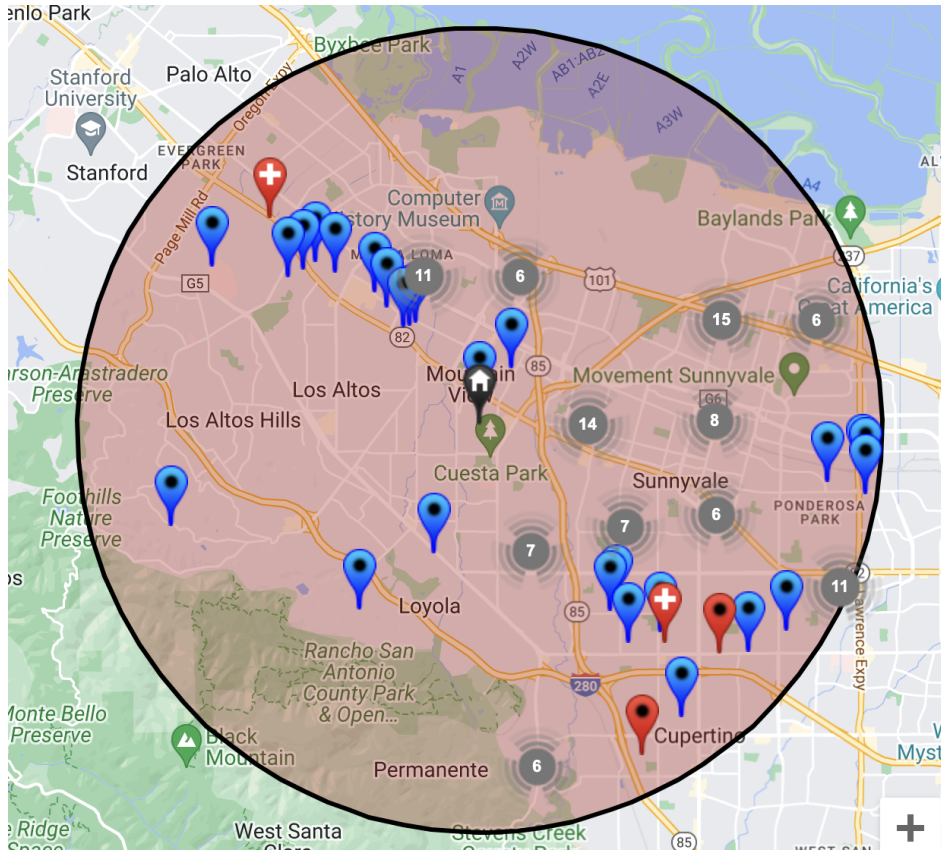
### How Safe Is Mountain View (Higher Is Better)



Overall, Mountain View is 52% safer than other cities in California and 37% safer than other cities in the United States. Mountain View ranks above-average in crime rates when compared to other cities in the country.

## Sex Offender Data

According to the State of California Department of Justice Office of the Attorney General, [California Megan's Law Website](#), there are 144 postable offenders within a 5-mile radius. The information on this site is extracted from the California Sex and Arson Registry (CSAR), the State's repository for sex offender information. The information in the CSAR is provided to local law enforcement agencies by the sex offender during the registration process. Pursuant to Penal Code § 290.46, not all registered sex offenders are posted on this website.



# Nearby Hazards

Mountain View recognizes that Fires, Earthquakes, and Floods are all possible natural disasters that could affect this area in California. [The city of Mountain View](#) has strategically established Community Emergency Response teams (CERT) and has developed this program for over 20 years. The Purpose of CERT is to equip community leaders in emergency preparedness in order to support their neighbors, including schools. [This map](#) shows how the city of Mountain View has outlined the CERT groups and who the point of contact is for each neighborhood. [This document](#) shows all of the updated contact information for the CERT point of contact on the map.

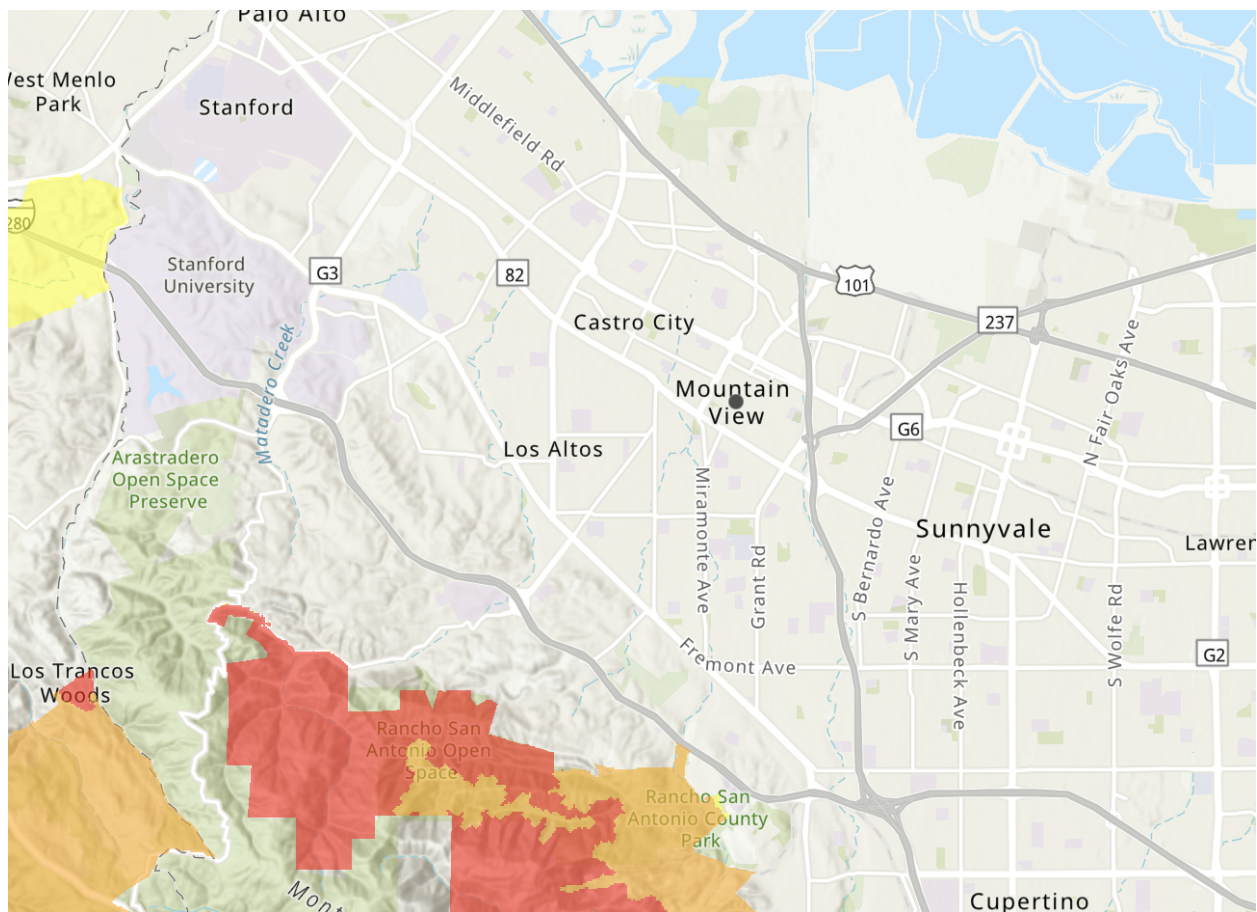




## FIRE

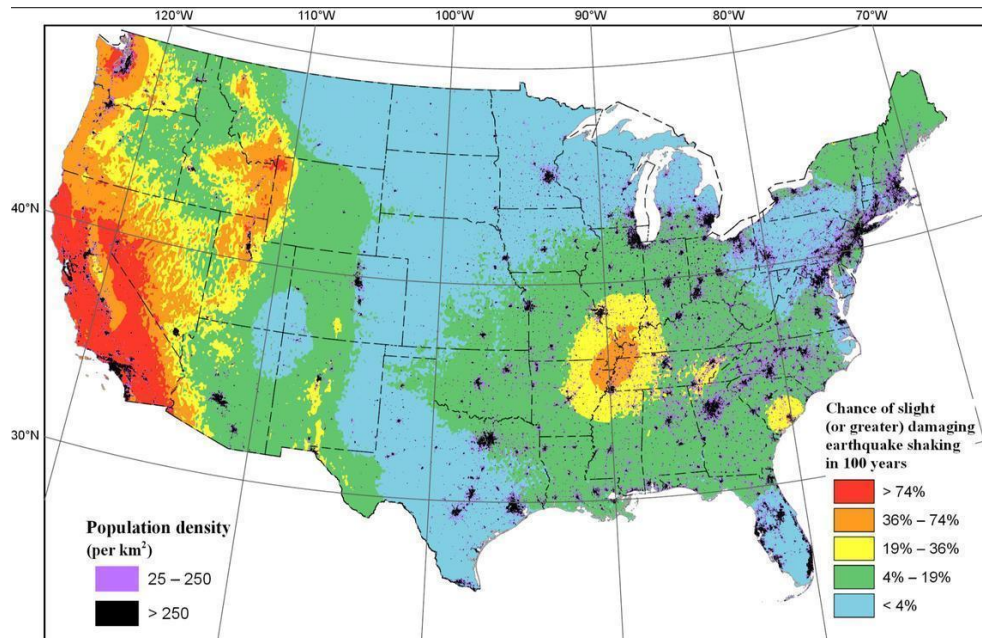
The [City of Mountain View](#) provides fire services for the communities in the area. Fire Department programs and services are dedicated to ensuring residents are informed of potential risks to their property and families. The Mountain View Fire Department offers many services and education programs geared to prepare its residents and increase the level of fire prevention in the area.

Mountain View sits in the flat and densely populated region of Santa Clara County which is not located near parts of the [Fire Hazard Severity Zones](#). This means that Mountain Valley Whisman School District is at a lower risk of a wildfire compared to other cities in the Bay Area, but at a high risk of potential bad air quality during fire season. It is important for MVWSD to have robust environmental hazards procedures (such as Shelter In Place, Evacuation and Reunification) in the event that it has to transition quickly due to air quality hazards or a fire.

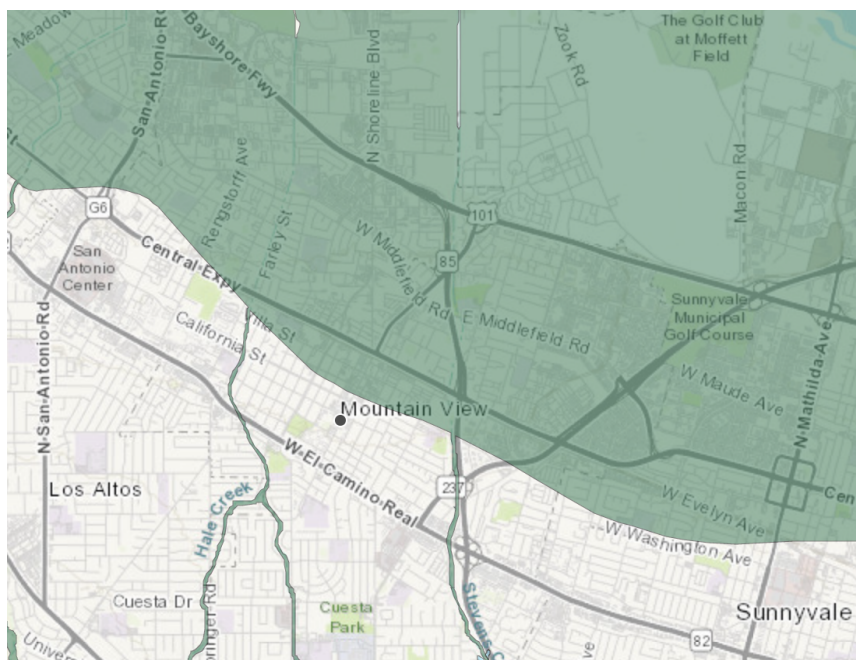


# EARTHQUAKE

The [USGS](#) Map shows the likelihood of damage due to earthquake shaking within the next 100 years, as based on the 2018 National Seismic Hazard Model.

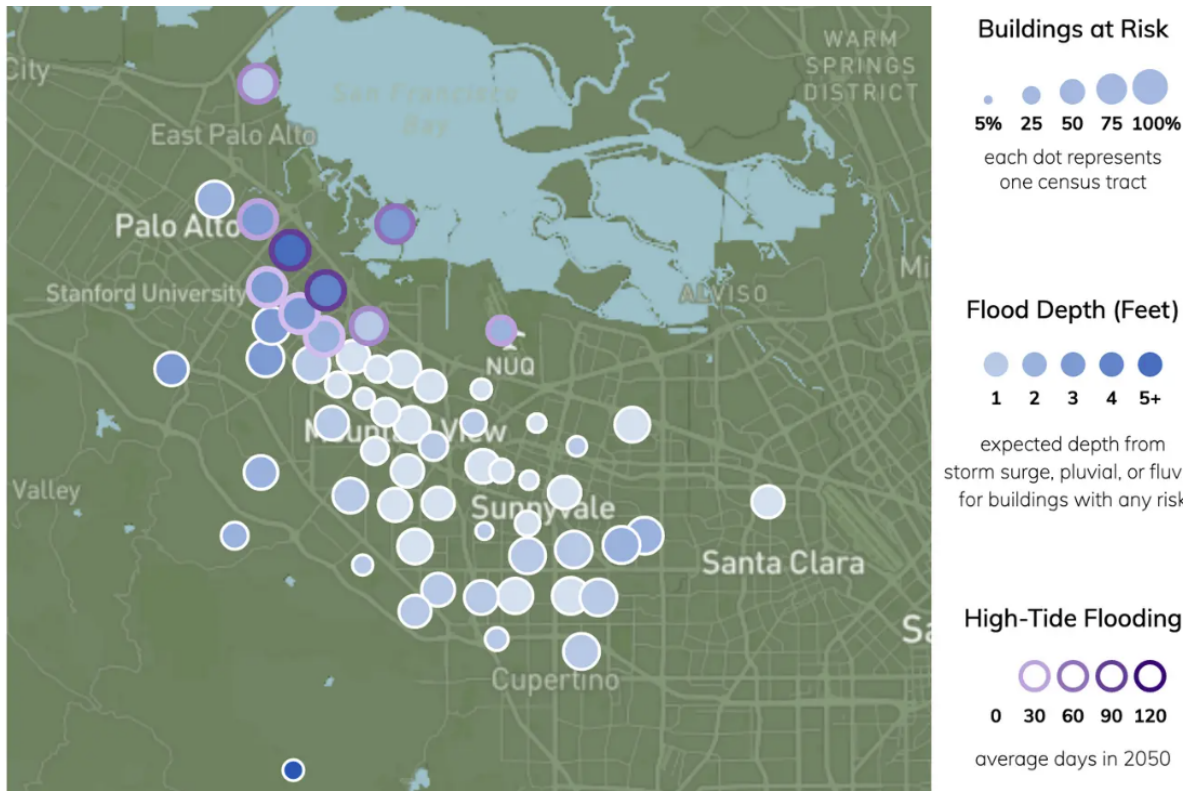


The greater Bay Area has a high likelihood of a damaging earthquake due to its proximity to the San Andreas Fault System. There is a 76% chance of one or more magnitude 7.0 earthquakes striking this part of California in the next 21 years. (Study found [here](#)). [Mountain View, CA](#) is at risk of major damage if a large-scale earthquake hits the area, as it sits within a known liquefaction zone as shown below.



# FLOODING

The City of Mountain View is at moderate risk of flooding. The expected sea level increase of [1.12 feet by the year 2050](#) has a [37% chance](#) of causing flooding in Mountain View due to the distance from the coast and natural average elevation of [17.58 Feet](#).



The [City of Mountain View](#) provides information and maps on flood evacuation maps, flood preparedness, and stormwater preparedness to increase awareness around water hazards.

# Timeline for Recommended Course Of Action:

The following timeline is being recommended to guide the planning process for a strategic 2022-23 and 2022-24 school years:

- **Spring 2023**

- Identify short-term, medium-term, and long-term projects based on audit findings, internal commitments, staffing, and limitations
- Follow up meeting with Joffe Emergency Services to determine the scope of support for the 2023-24 school year for health, safety, and security services
- Audit drill calendar for the remainder of 2022-2023, to ensure all remaining drills are scheduled and a clear plan for capturing learnings, takeaways, and feedback from each
- Quarterly step back with Senior Leadership Team team to debrief recent incidents, prioritize PD for the summer, and solidify campus projects for 23-24 school year

- **Summer 2023**

- Inventory emergency supplies and restock, as needed
- Review existing Emergency Plan and make updates due to staffing changes and updated best practices
- Review and write a Business continuity plan
- Schedule drills for 2023-2024, with a scope and sequence of escalating complexity
- Professional Development
  - District Crisis Response Team
    - audience: district-level team members
  - ICS structure: roles & responsibilities training
    - audience: anyone with a role on the ICS team

- **Fall 2023**

- Professional Development (during In-service training week)
  - Emergency Procedures for the 2023-2024 school year:
    - audience: all staff
      - Fire/Evacuation
      - Earthquake
      - Movement Restriction
    - Medical Emergency
- Hold Fire Drill at all campuses
- Hold Lockdown Drill at all campuses
- Hold Earthquake Drill at all campuses