



Mountain View
Whisman
School District

Vargas Greening and Outdoor Learning

January 12, 2023

Guiding Principles

Strategic Plan 2027

Goal Area 5

- Equitable distribution of resources that support student success.
- Goal 5a: Ensure facilities and resources equitably serve all students.

Master Facility Plan

- In December of 2019, the Board approved the Master Facilities Plan (MFP) which prioritizes the work of Measure T.
- After a community input process, the large trees at the front of Vargas were removed due to car damage caused by falling pine cones and the danger they posed to people.
- Prior to removing the trees, the Board explored building a carport using Measure T funds and the District paid to have the pinecones harvested.

Previous Requests for Greening

- Native, drought resistant trees.
- Include as many trees as possible throughout the campus.
- Include additional greenery on the campus to reduce the heat island effect produced by the large amount of asphalt
- Provide comfortable places for students and staff to be outside.
- Explore a partnership with Canopy to provide education to students.

Further Background

- 9 trees were removed and the the District is proposing to plant 62 new native trees.
 - This is over the 2:1 District standard for replacement.
- Not everyone will be happy.
 - We need to balance the schools needs and community needs.



Mountain View
Whisman
School District

Design

Design Considerations

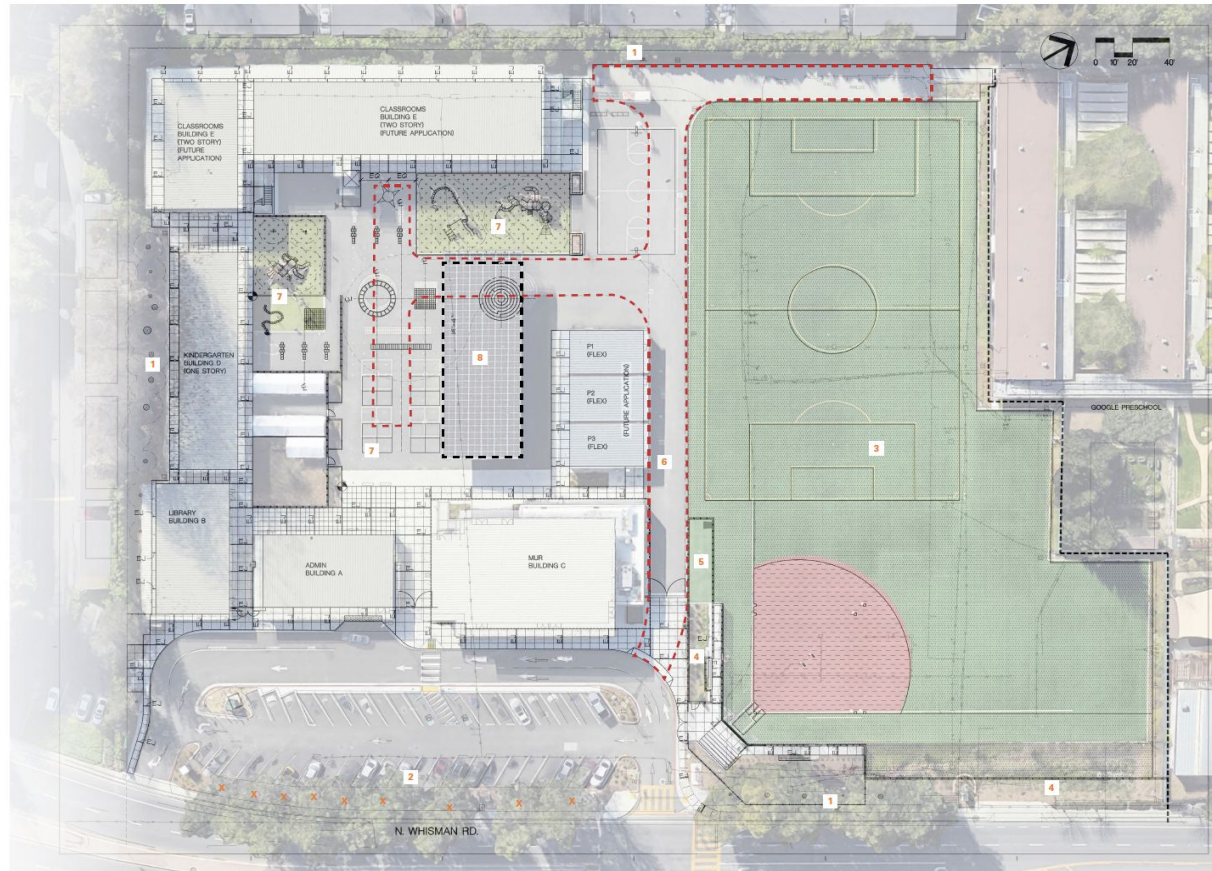
The design was a technical exercise due to the limitations of the site which include:

- Emergency vehicle access
- Shading of solar
- Underground utilities
- The need for blacktop playspace for students
- Existing biotreatment area that is planted
- Looked at lessons learned from other sites

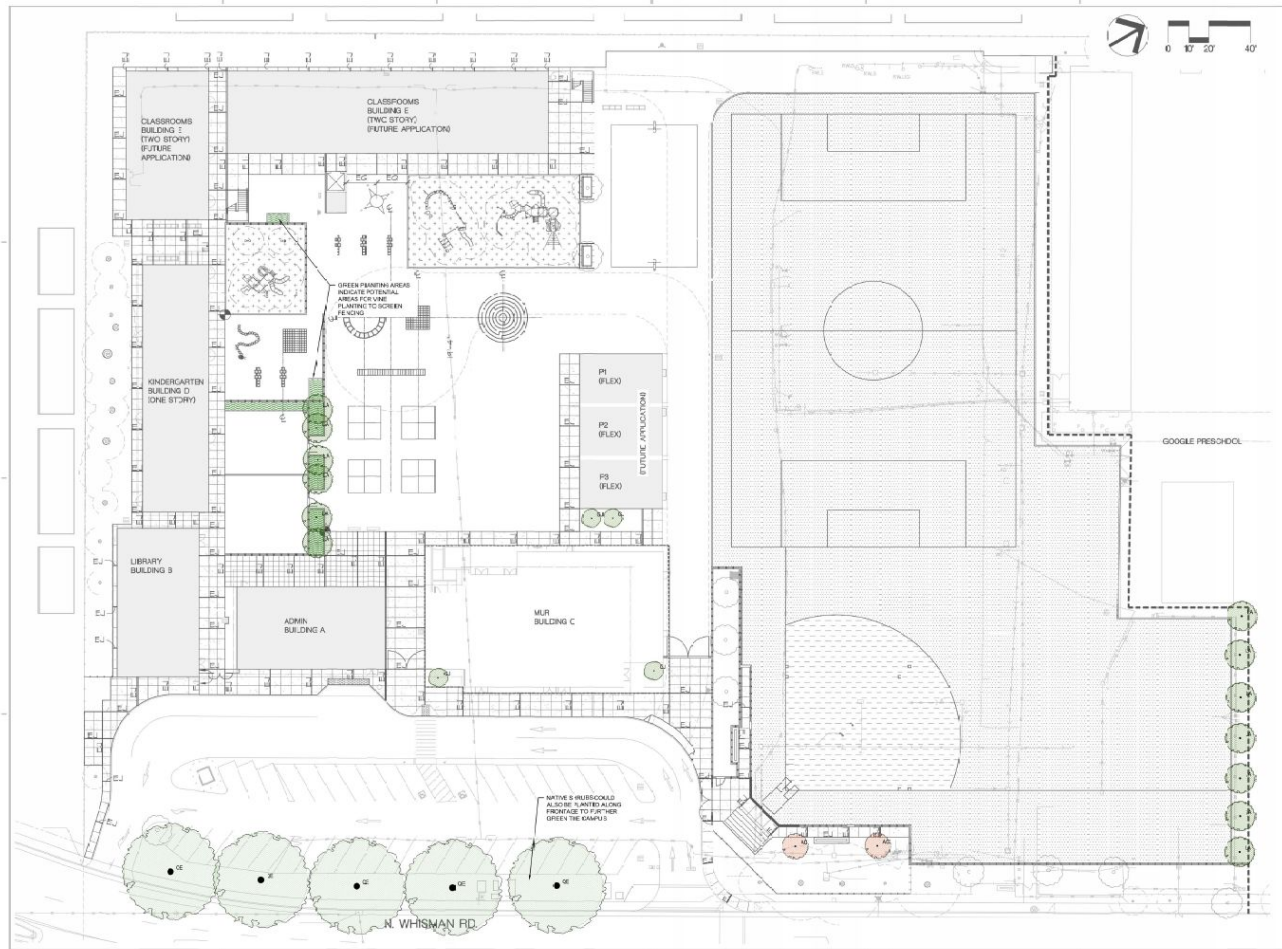
Design Limitations Considerations

VARGAS ELEMENTARY EXISTING CONDITIONS

- 1 EXISTING TREES TO REMAIN
- 2 EXISTING TREES TO BE REPLACED (9)
- 3 EXISTING TURF FIELD
- 4 EXISTING PLANTED BIOTREATMENT AREA
- 5 EXISTING STORAGE SHED
- 6 EMERGENCY VEHICLE ACCESS LANE - DO NOT OBSTRUCT
- 7 EXISTING PLAY AREAS - DO NOT REDUCE
- 8 EXISTING SOLAR ARRAY - DO NOT SHADE



First Conceptual Drawing



JOSE ANTONIO VARGAS ELEMENTARY TREE REPLACEMENT
MOUNTAIN VIEW, CALIFORNIA

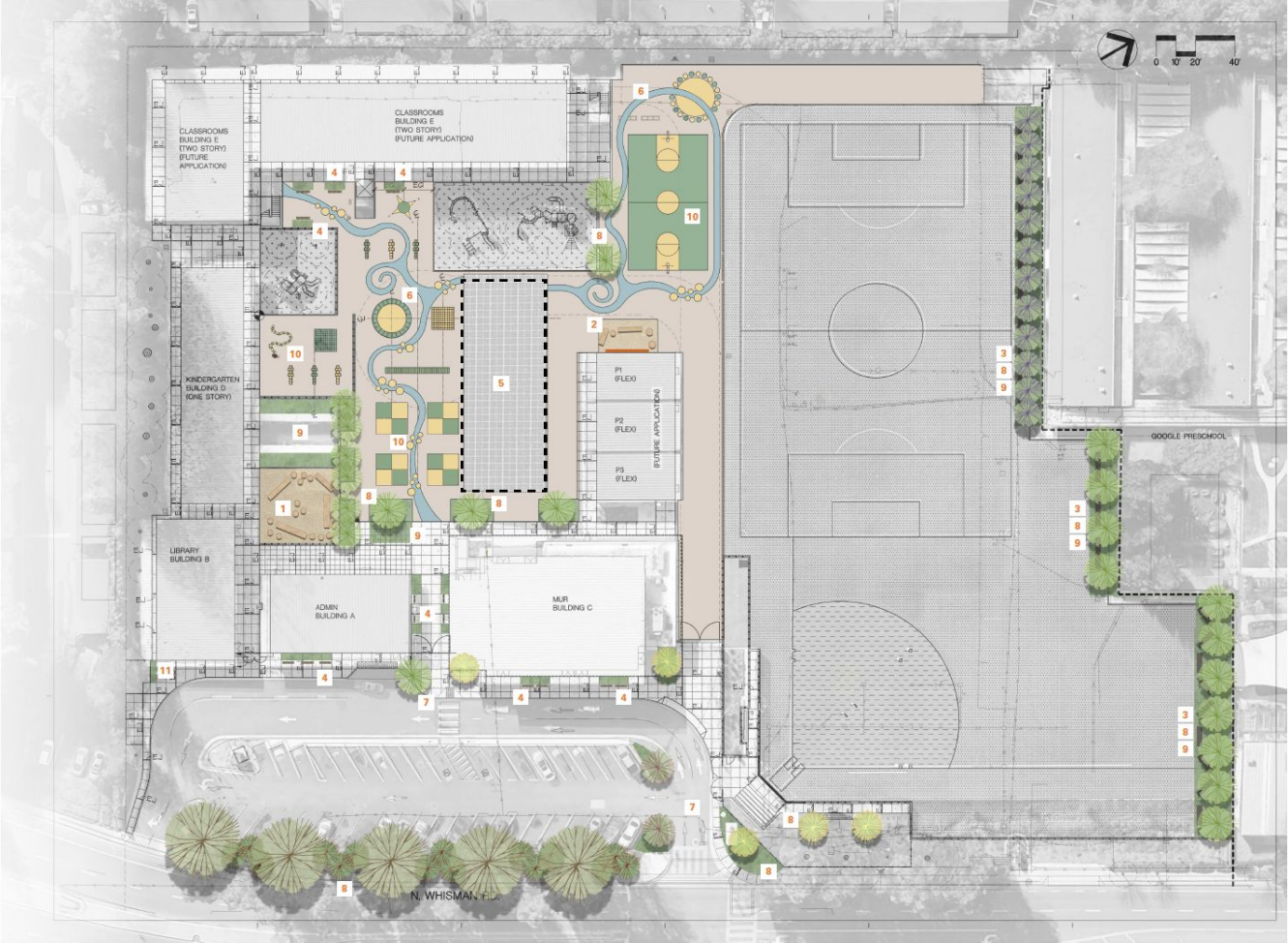
SCHEMATIC TREE PLAN
DECEMBER, 2022

CARDUCCI
ASSOCIATES

Second Conceptual Drawing

OUTDOOR LEARNING & GREENING LEGEND

- 1 OUTDOOR GATHERING AREA WITH STUMP AND LOG SEATING
- 2 SENSORY WALL AND THERAPY AREA
- 3 NATURAL/SHADED SEATING AREA WITH BASALT BENCHES
- 4 RAISED PLANTERS WITH VINE TRELIS SCREEN AND BENCHES
- 5 TEACHING AREA UNDER EXISTING SOLAR ARRAY WITH MOVABLE TEACHING WALLS
- 6 SENSORY PATH
- 7 ENTRY GATEWAY PLANTING
- 8 NEW NATIVE TREES (62)
- 9 NEW PLANTING AREAS WITH NATIVE PLANTS AND POLLINATOR HABITAT
- 10 PAINTED ASPHALT AND GAME STRIPING
- 11 SCREEN PLANTING





SURFACING OPPORTUNITIES AND EXPERIENCES



SEATING OPPORTUNITIES AND EXPERIENCES



SHADE OPPORTUNITIES AND EXPERIENCES

SENSORY WALL AND THERAPEUTIC SPACES

OUTDOOR LEARNING & GREENING
VARGAS ELEMENTARY SCHOOL
MOUNTAIN VIEW, CALIFORNIA

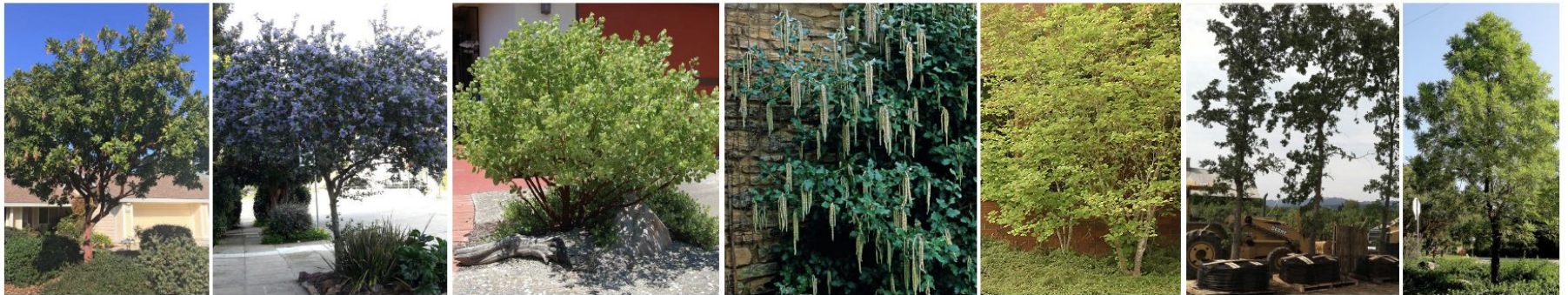
CONCEPT IMAGES
JANUARY 12TH, 2023

CARDUCCI
ASSOCIATES

3



PLANTERS AND FURNISHINGS



NATIVE TREES AND SHRUBS



NATIVE POLLINATOR AND HABITAT GARDENS

OUTDOOR LEARNING & GREENING
 VARGAS ELEMENTARY SCHOOL
 MOUNTAIN VIEW, CALIFORNIA

SITE FURNISHING & GREENING OPPORTUNITIES
 JANUARY 12TH, 2023

CARDUCCI
 ASSOCIATES

Canopy

- Canopy has offered to provide a one hour assembly for students in K-3 and a one hour community event for \$5,000.
- Canopy's goal would be to have participants walk away with a renewed excitement for trees and more knowledge about trees.



Mountain View
Whisman
School District

Questions

Questions

- Staff recommends that we align it with planting, however we have a couple of questions that we need direction on?
 - What is the Board's expectation for Canopy's involvement?
 - To reduce costs, does the Board feel that it is ok with the possibility of moving forward if the children's education cannot be scheduled prior to planting season schedule?
 - Is it the Board's expectation that the education sessions in conjunction with planting?



Mountain View
Whisman
School District

Next Steps

Next Steps

- Show parents and the community the plan.
 - Meetings will take place January 24
- Bring it back for final Board approval on the February 9th Board meeting with
 - Timeline that is aligned with planting season.
 - Estimate of projected costs