



Mountain View  
Whisman  
School District

# Enrollment Update

November 2022



# Alignment to Strategic Plan

## Goal 1:

- Effective and consistent instructional practices that meet the needs of all students

## Board of Trustees Goal:

- Place all students at their neighborhood schools

# Enrollment Update

- Enrollment determines number of teachers at each site:
  - Staffing Ratio: schoolwide *averages* in the following grades Kindergarten through 3<sup>rd</sup> grades: 24:1
  - 4th and 5th grades: 30:1
  - 6th, 7th and 8th grades: 180 contacts per day or 33 in any one core class period
- Students do not come in “groups of 24”

# Things to Remember

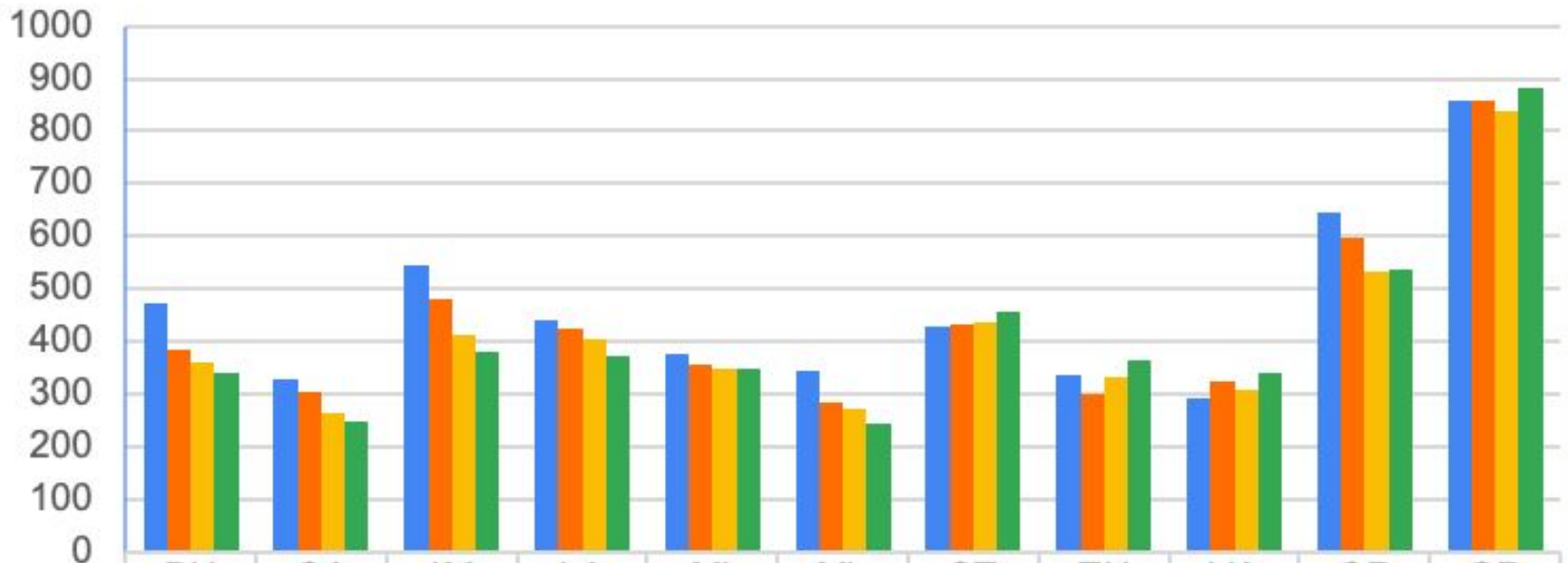
- 2020-21 was the first year the new boundaries were fully implemented
- Due to COVID, many families moved or made changes for their families in 2021-22
- The state changed the birthdate for enrollment into TK



Mountain View  
Whisman  
School District

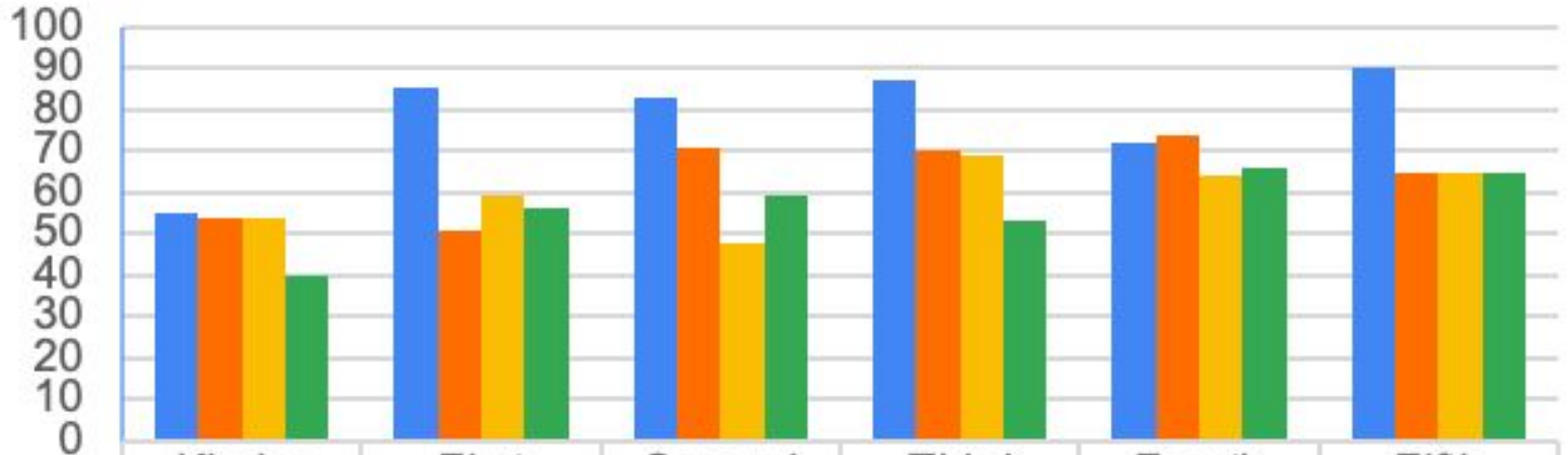
# Enrollment Updates by School Site *October 2019 to October 2022*

## School Enrollment October 2019 - October 2022



	BU	CA	IM	LA	MI	ML	ST	TH	VA	CR	GR
■ Oct.2019	472	327	546	441	378	344	430	335	293	647	858
■ Oct.2020	385	306	480	423	358	285	432	301	323	598	858
■ Oct.2021	359	266	412	403	348	271	437	332	309	532	839
■ Oct.2022	339	248	380	373	347	245	456	363	339	538	882

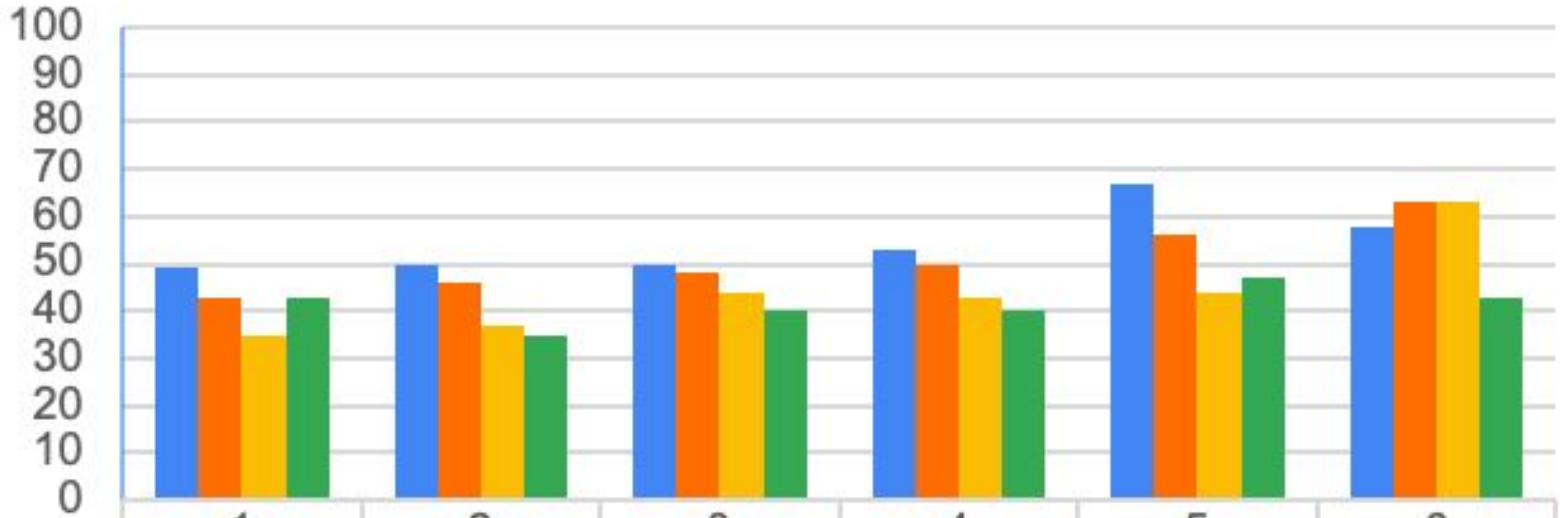
# Bubb Enrollment by Grade



	Kinder	First	Second	Third	Fourth	Fifth
■ Oct.2019	55	85	83	87	72	90
■ Oct.2020	54	51	71	70	74	65
■ Oct. 2021	54	59	48	69	64	65
■ Oct.2022	40	56	59	53	66	65

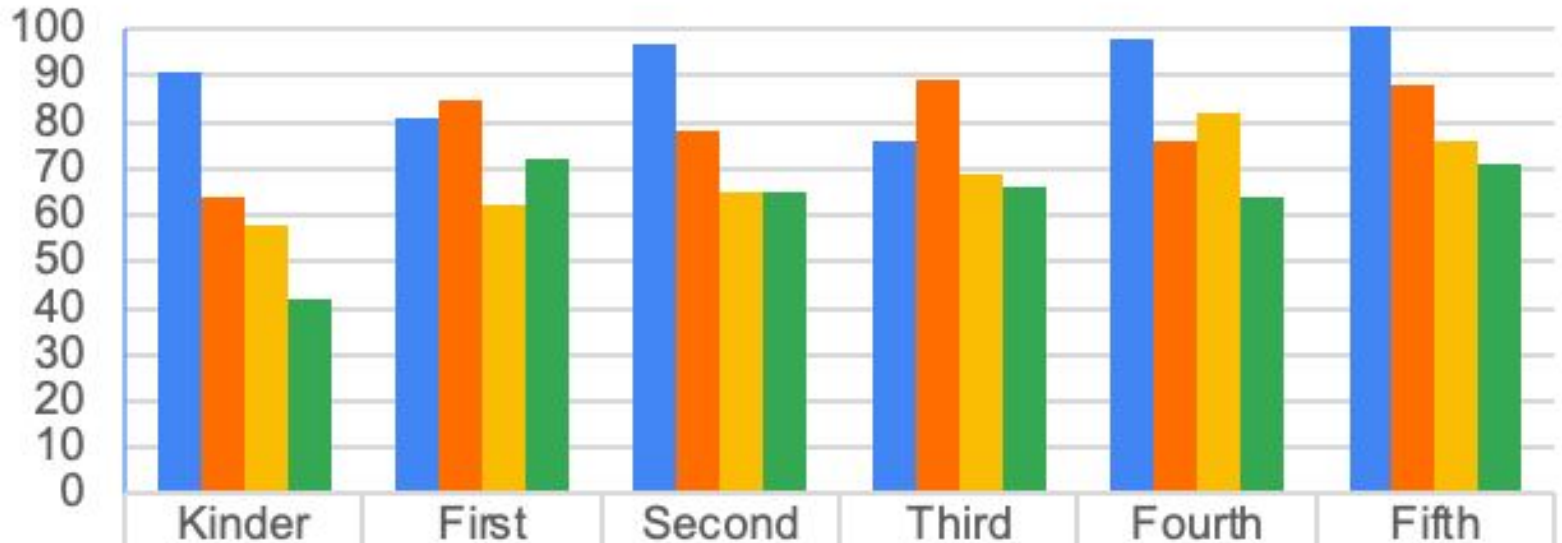
Enrollment includes students in general education classes as well as SAI classes

# Castro Enrollment by Grade

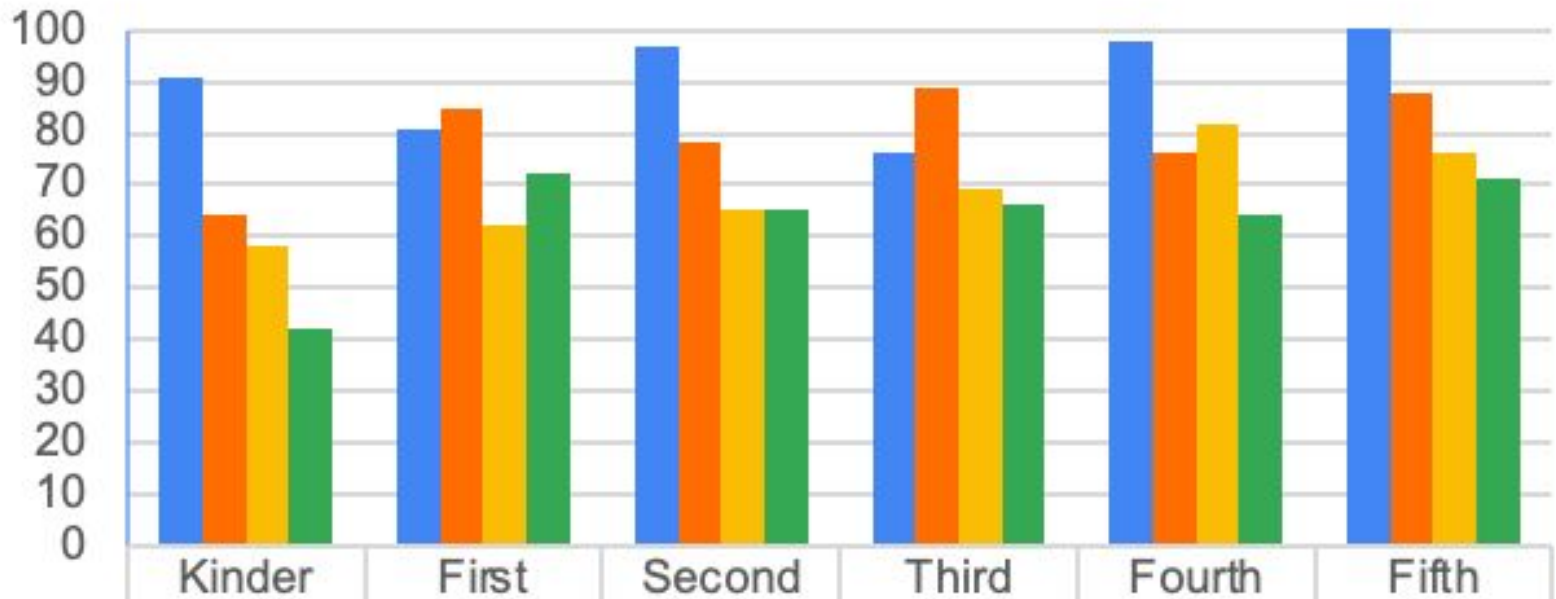




## Imai Enrollment by Grade



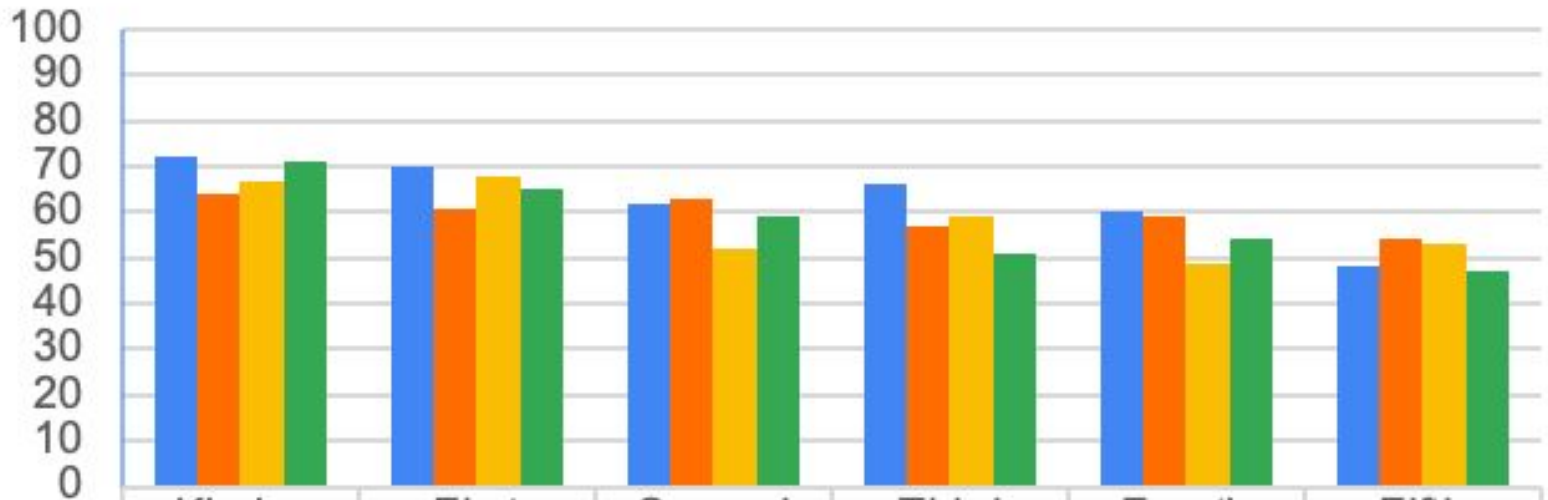
# Landels Enrollment by Grade



	Kinder	First	Second	Third	Fourth	Fifth
Oct. 2019	91	81	97	76	98	103
Oct. 2020	64	85	78	89	76	88
Oct. 2021	58	62	65	69	82	76
Oct. 2022	42	72	65	66	64	71

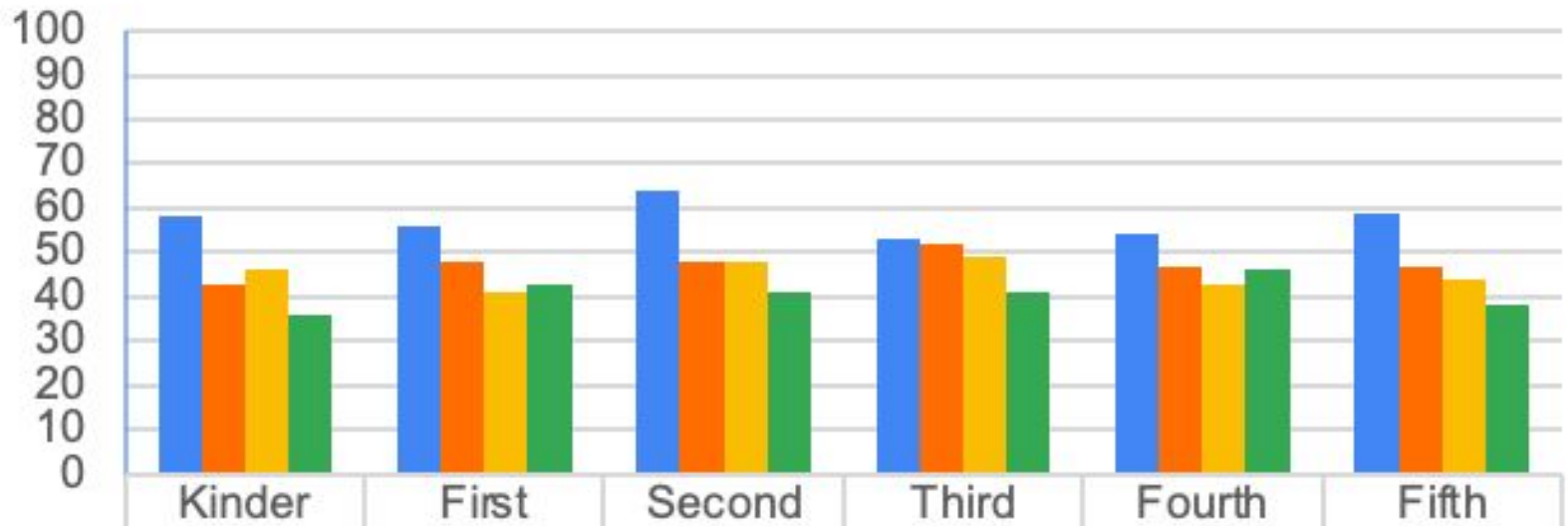
Enrollment includes students in general education classes as well as an SAI class

# Mistral Enrollment by Grade



	Kinder	First	Second	Third	Fourth	Fifth
Oct. 2019	72	70	62	66	60	48
Oct. 2020	64	61	63	57	59	54
Oct. 2021	67	68	52	59	49	53
Oct. 2022	71	65	59	51	54	47

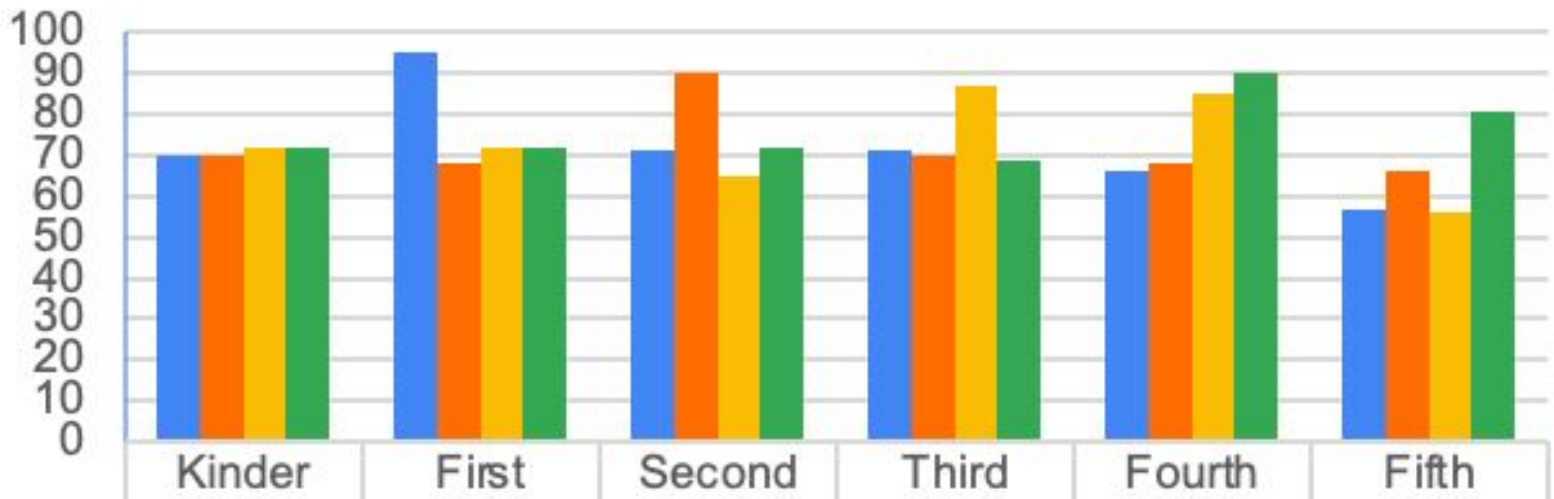
# Monta Loma Enrollment by Grade



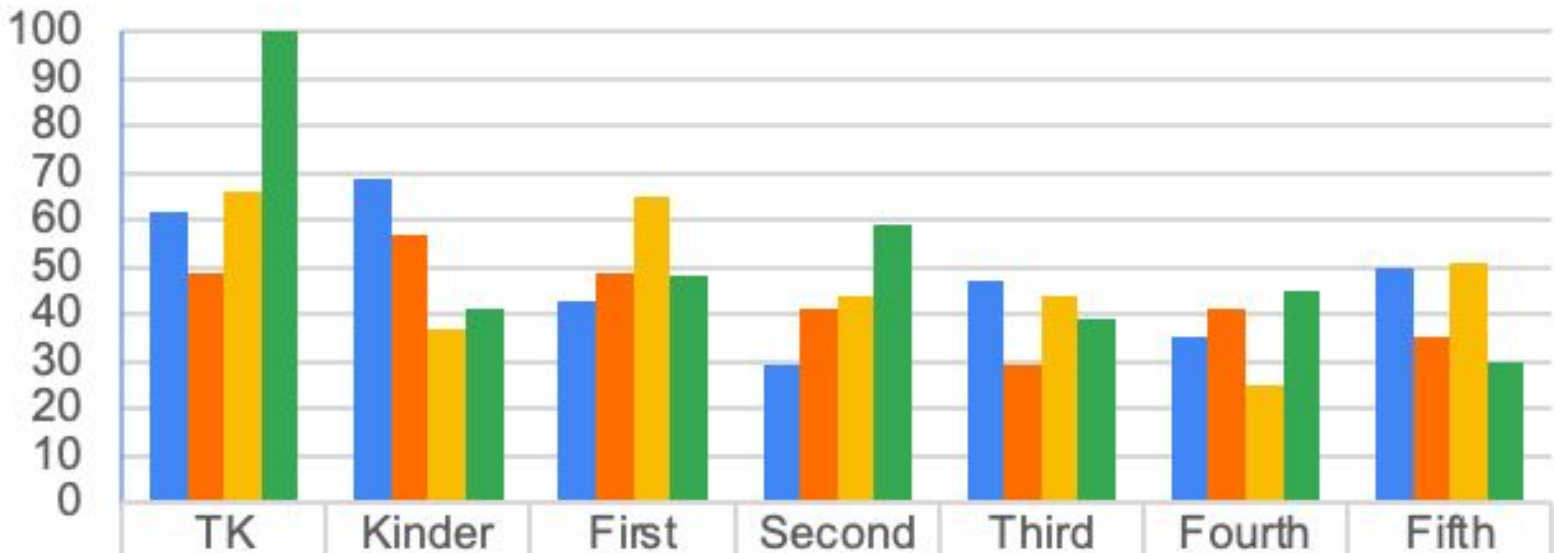
	Kinder	First	Second	Third	Fourth	Fifth
■ Oct. 2019	58	56	64	53	54	59
■ Oct. 2020	43	48	48	52	47	47
■ Oct. 2021	46	41	48	49	43	44
■ Oct. 2022	36	43	41	41	46	38

Enrollment includes students in general education classes as well as SAI classes

## Stevenson Enrollment by Grade

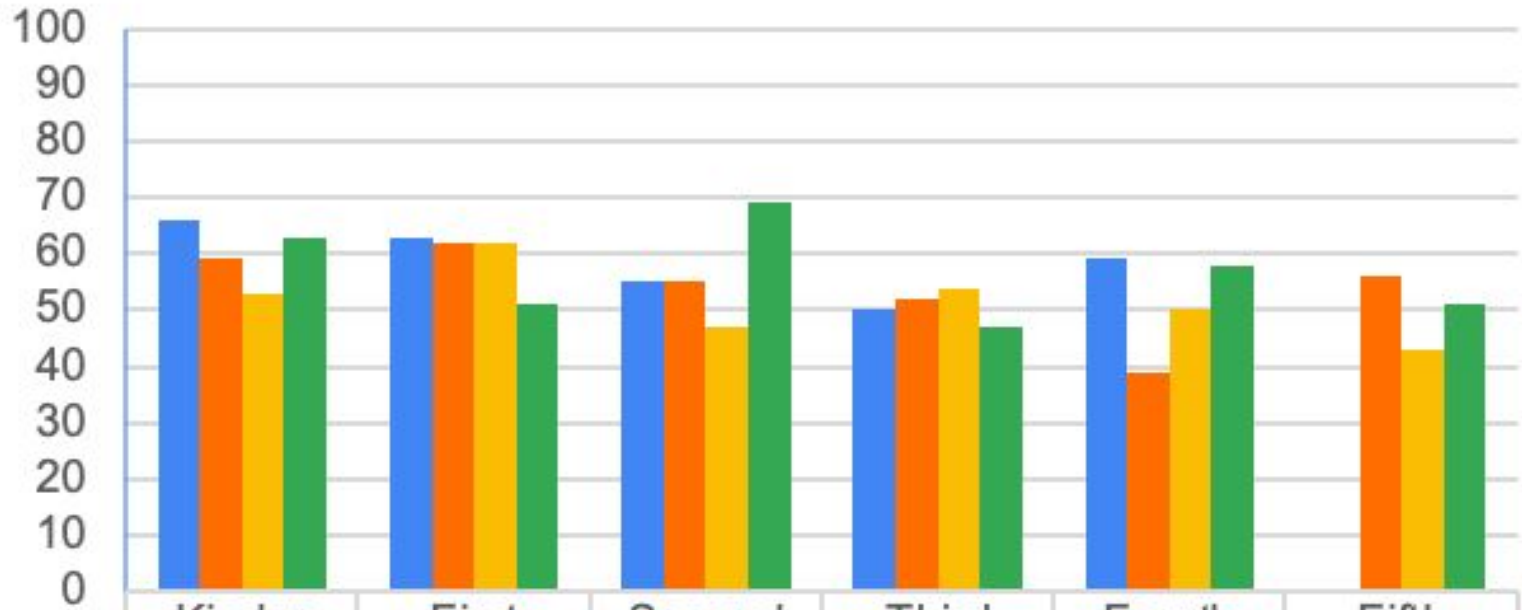


# Theuerkauf Enrollment by Grade



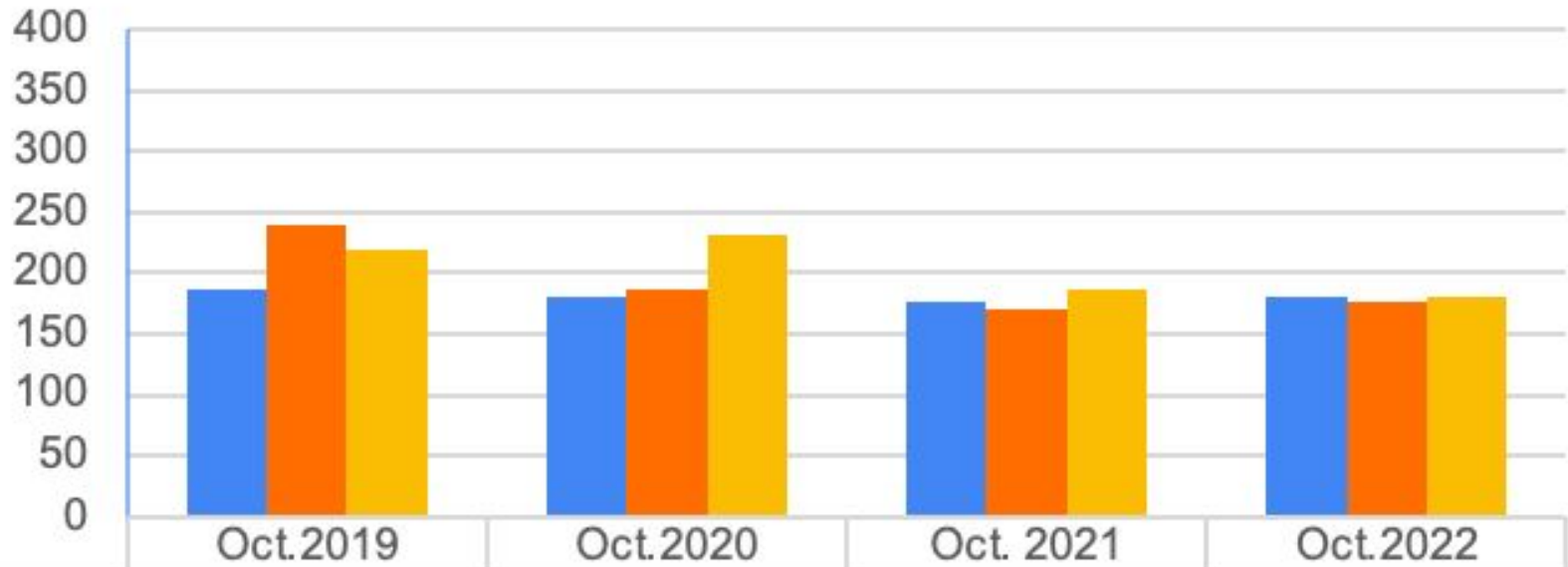
■ Oct.2019	62	69	43	29	47	35	50
■ Oct.2020	49	57	49	41	29	41	35
■ Oct. 2021	66	37	65	44	44	25	51
■ Oct.2022	101	41	48	59	39	45	30

# Vargas Enrollment by Grade



	Kinder	First	Second	Third	Fourth	Fifth
■ Oct.2019	66	63	55	50	59	0
■ Oct.2020	59	62	55	52	39	56
■ Oct. 2021	53	62	47	54	50	43
■ Oct.2022	63	51	69	47	58	51

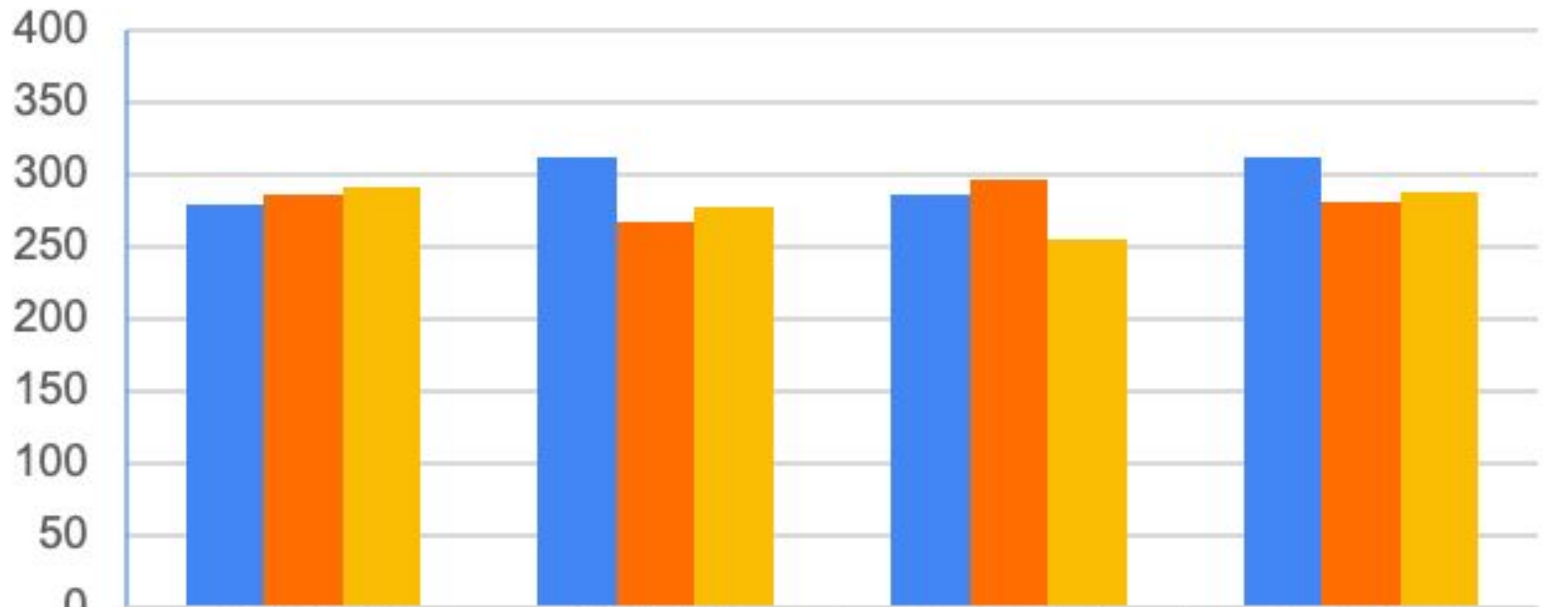
## Crittenden Enrollment by Grade



Enrollment includes students in general education classes as well as SAI classes



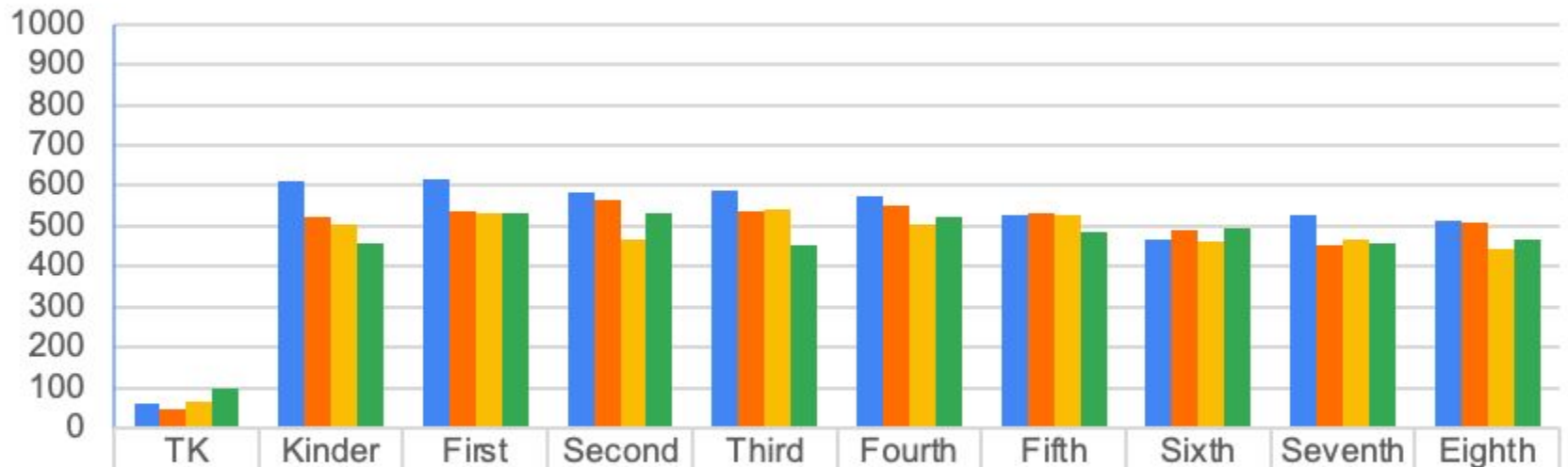
## Graham Enrollment by Grade



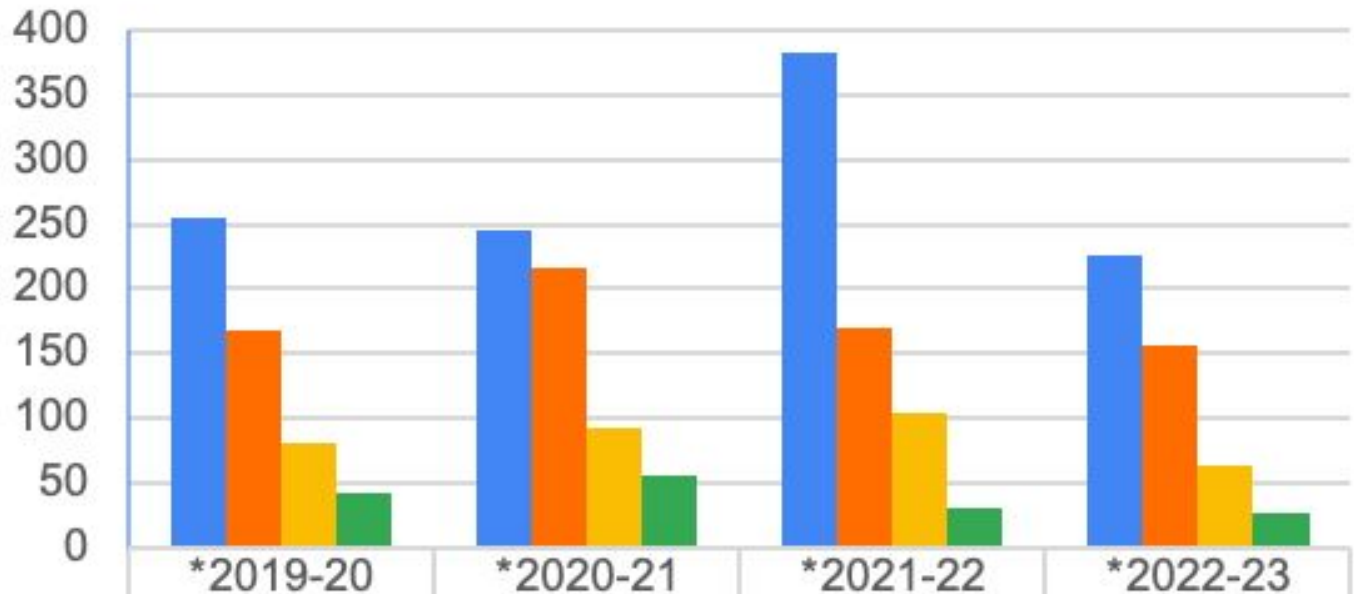
	Oct.2019	Oct.2020	Oct. 2021	Oct.2022
■ Sixth	279	312	286	312
■ Seventh	287	268	297	281
■ Eighth	292	278	256	289

Enrollment includes students in general education classes as well as SAI classes

## District Enrollment by Grade



# Withdrawal Reasons



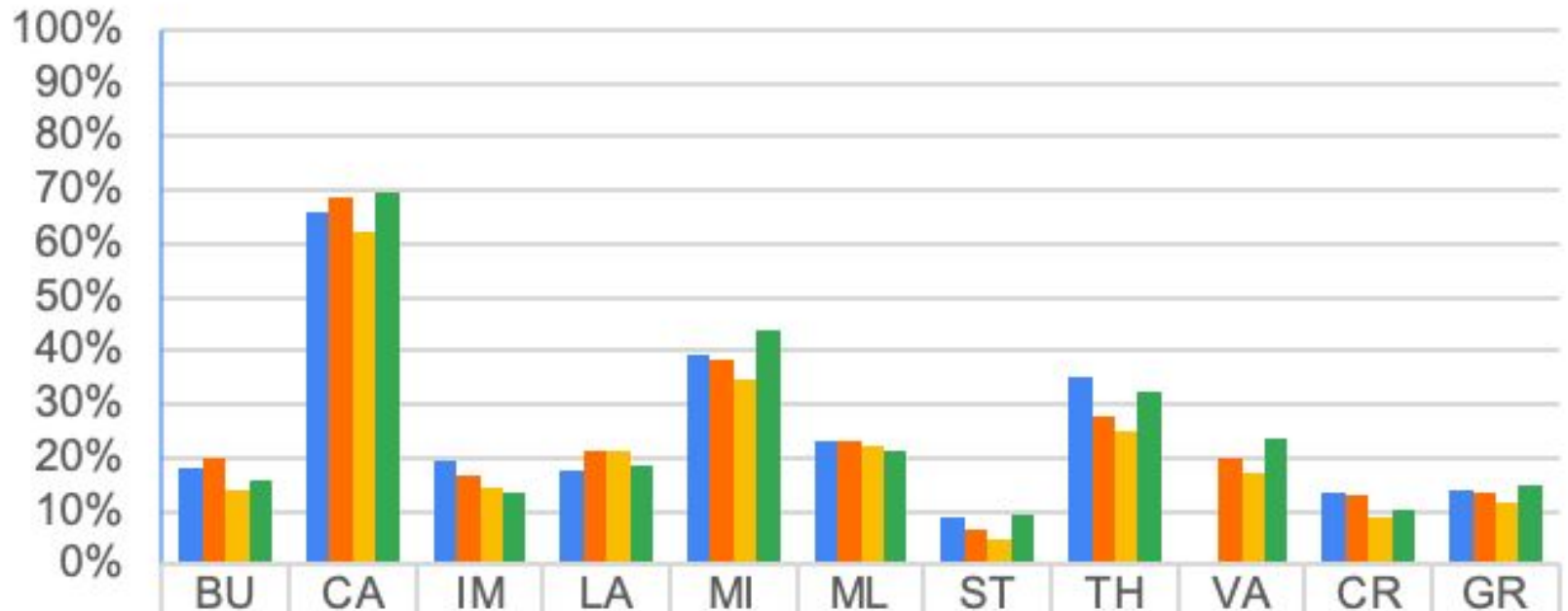
■ Another CA School	255	245	383	226
■ Private School	167	217	170	156
■ Out of State	81	92	103	63
■ Out of Country	42	55	30	27



Mountain View  
Whisman  
School District

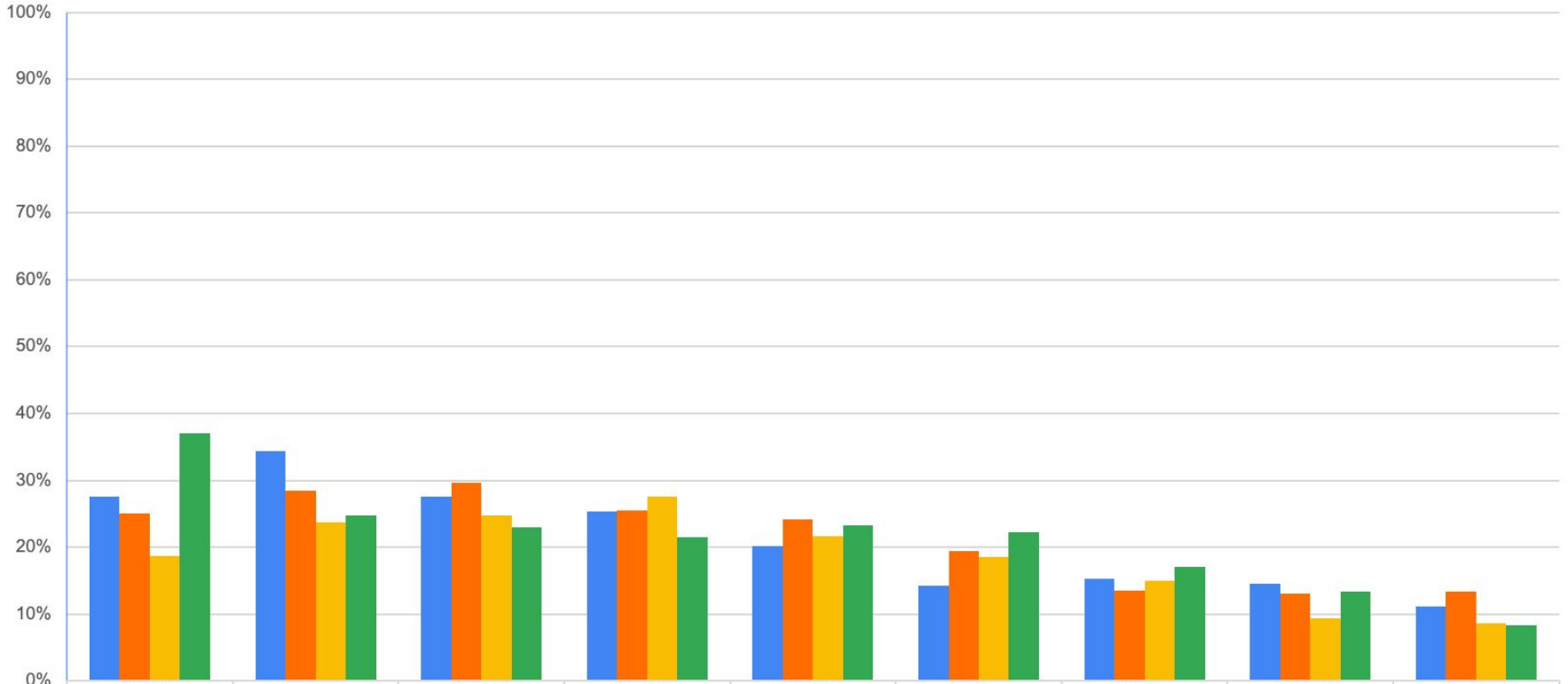
# Additional Data

# English Learners



	BU	CA	IM	LA	MI	ML	ST	TH	VA	CR	GR
*2018-19	18%	66%	19%	18%	39%	23%	9%	35%		13%	14%
*2019-20	20%	69%	17%	21%	38%	23%	7%	28%	20%	13%	14%
*2020-21	14%	62%	15%	21%	34%	22%	5%	25%	17%	9%	12%
*2021-22	16%	70%	13%	18%	44%	21%	9%	32%	24%	10%	15%

## Percentage of English Learners in each grade



	TK/K	First	Second	Third	Fourth	Fifth	Sixth	Seventh	Eighth
*2018-19	28%	34%	28%	25%	20%	14%	15%	15%	11%
*2019-20	25%	29%	30%	26%	24%	19%	14%	13%	13%
*2020-21	19%	24%	25%	28%	22%	19%	15%	9%	9%
*2021-22	37%	25%	23%	22%	23%	22%	17%	13%	8%

# Free/Reduced Lunch Counts by Site

Free and Reduced Price Meals	2018-2019	2019-2020	2020-2021	2021-2022
Bubb	18%	19%	15%	14%
Castro	85%	85%	82%	74%
Crittenden	42%	41%	28%	25%
Graham	32%	32%	27%	26%
Imai	10%	6%	5%	4%
Landels	19%	24%	25%	16%
Mistral	45%	42%	44%	39%
Monta Loma	39%	38%	30%	22%
Stevenson	6%	6%	6%	6%
Theuerkauf	55%	38%	31%	25%
Vargas		24%	26%	18%
<b>MVWSD Total</b>	<b>32%</b>	<b>31%</b>	<b>27%</b>	<b>23%</b>

# Free and Reduced Lunch Counts

- It is early in the year and we don't have complete counts to share for 2022-23
- All students in MVWSD continue to receive free meals
- The ability for anyone to receive a lunch, regardless of FRL status, has reduced the urgency for many families to apply
- Free and Reduced Lunch status is one of the categories that contributes to unduplicated pupil counts.
- It also contributes to eligibility for Title I funding
- FRL numbers were expected to decline and may continue to decline as the free lunch program has been extended



# McKinney Vento Counts

McKinney Vento Counts	2018-2019	2019-2020	2020-2021	2021-2022
Bubb	6	6	2	5
Castro	51	57	60	53
Crittenden	18	20	20	19
Graham	21	21	31	38
Imai	1	1	3	7
Landels	4	4	10	10
Mistral	8	7	8	19
Monta Loma	6	7	9	9
Theuerkauf	6	9	12	12
Vargas		2	11	11
<b>MVWSD Total</b>	<b>128</b>	<b>134</b>	<b>166</b>	<b>182</b>



Mountain View  
Whisman  
School District

# Immunizations

# Immunizations

- California law requires children to be immunized.
  - Children are exempt from immunization requirements only if a parent or guardian submits a written statement from a licensed physician (M.D. or D.O.)
- Immunization requirements for admission to school in California for the 2022-2023 school year remain in place
- With a few specific exceptions, immunizations must be complete before students are able to attend class in person
- The Administrative Services team has worked with all families new to the district or entering grade 7 to ensure immunizations requirements were met prior to students attending



Mountain View  
Whisman  
School District

# Summary and Next Steps

# Summary

- Enrollment has continued to decline in most elementary schools
  - Theuerkauf has seen an increase due to the expansion of TK
  - Vargas continues to grow
  - Choice Schools remain consistent
- Middle School enrollment increased this year
- Withdrawal reasons are fairly consistent with years past
- Fewer families have applied for free/reduced lunch, though we know that the needs exist in the community particularly given the continued increase in McKinney Vento families

# Next Steps

- Enrollment shifts impact staffing at sites
- We continue working to place long term substitute teachers in classrooms left vacant by leaves
  - We are continuing to advertise and hire substitute teachers
- Continue to plan for further TK expansion
- Making adjustments to the enrollment process for 23-24 to streamline and support:
  - enrolling families
  - staffing (recruiting and hiring)
  - budgeting
  - teacher placement and assignments