



Mountain View
Whisman
School District

MVWSD Perimeter Fencing Project

Updated January 20, 2021

Plans are also available for viewing at
<https://www.mvwsd.org/construction>

Guiding Principles

Partnership with the City

In 2000 the School District entered into a Joint Use Agreement with the City

- City maintains fields and the District maintains ownership
- District gives after-school priority access to the City who coordinates community activities



Mountain View
Whisman
School District

What Is the Need?

Safety

- We are responsible for the safety of 5,200 students and more than 600 staff members every day.
- While many of us enjoy the open campus feel, the reality is:
 - Our staff members regularly have to approach adults on campus who are not authorized to be there
 - Dog bites
 - Bike thefts (Had to install bike cages)
- Parents and staff members shared their concerns about potential violent events

Safety

- Securing our campuses to deter school violence and protect students and staff was a priority with the community (From the Safety Town Hall in 2018).
- Fences as well as cameras were listed in the Master Facility Plan as a priority 1 need. The MFP was approved on December 12, 2019.
- While fences and security cameras will not stop someone who is determined to hurt children and staff they are deterrents.
- It stops individuals from walking off the trail onto campus while kids are present.

Thought Exchange - Student Voices

Visitor sign in and entrances

"The office should only allow known people into the school and students will feel safe knowing no intruders can get in."

School environment

"Students should be able to feel very safe and secure during school time."

Thought Exchange - Adult Voices

Consider making the campus secured. Right now anyone can walk on campus. No one enforces the stickers and the office blinds are always down

People just walk by the main office right to classrooms. How is that keeping my kids safe?

Frank L. Huff School K-5

There need to be gates at the entrances to the school, and there needs to be someone at the office who is looking out for people entering the campus.

Right now, the blinds at the office are down, and there is no one monitoring campus security. Surely we can afford one employee per school for this.

Frank L. Huff School K-5

4.0  (14)



Though I like that the grounds are open, anyone can come onto campus during school hours.

It's important that school officials know who is on campus at all times.

Benjamin Bubb School K-5

3.9  (17)



The campus perimeter needs to be secured. There should be one secure entrance next to the office and plenty of one way exits.

Stevenson School K-5

3.8  (13)



Master Facility Plan

- Need for secure perimeters at all campuses, especially where schools share public park facilities, trail access, and multiple road frontages.
- Need for real-time situational awareness by school administrators of all external access points onto school campuses during school hours.
- Administrative buildings are not always situated in the most visible and accessible areas of school campuses.

Master Facility Plan Principal Interviews

Bubb

6. Safety and Security

- a. There is minimal perimeter security along the back of the school campus along Barbara Ave. and Bubb Park. There is no gate to control entry at the SE corner of the campus and no fence or gate at the SW corner to control entry to/from the rear parking lot and along the shared boundary with Bubb Park.
- b. Existing gates in the fence along the park edge are locked. Custodial staff open and lock the gates every day. Students and staff need to be able to exit the site even when the gates are locked (e.g. during an emergency event).

Monta Loma

2. Perimeter Controls

- a. Campus is located alongside and shares use of Monta Loma Park.
- b. Campus has a perimeter fence around its buildings, but not around its parking lots, driveways or outdoor play areas.
- c. While the school and park abut residential properties on three sides, there are two pedestrian access points at the rear of the campus including a pedestrian path to Anna Ave/Elka Ave. and second path to Laura Lane.
 - i. These paths are open at all hours.
 - ii. School needs to have ability to close these off during school hours.

M

COVID 19 Impact

- For COVID safety, required to limit contact between the public and students/staff during school hours if students return to school with specific entry and exit points that can be monitored.
- Some staff has said that they do not feel safe to return to campus when members of the public walk onto campus without masks.



Mountain View
Whisman
School District

Current Plans

Current Fencing Plans

- At 5 sites, very minimal amount of new fencing is planned; simply adding gates and connecting existing fencing
- By connecting the existing fences and adding a few gates (that automatically will unlock in the evenings and weekends), we can eliminate some of the safety concerns while still giving community members the same access to our fields and playgrounds as was allowed before.
- Landels and Monta Loma have more new fencing planned, but again, connects the fencing that is already present at the perimeter.

Continued City Involvement

- **May 12, 2020** MVWSD communicated with the City about potential perimeter controls
- **May 31, 2020** conceptual drawings were sent for feedback
- **June 1, 2020** received feedback from City via email and adjustments were made.
- **June 3, 2020** meeting to discuss plans with the City.
- **Since September** we have been in contact with the Community Services Department on a regular basis through email and phone calls.

Community Input and Process

- Safety Town Hall in 2018
- Master Facility Plan 2019; every school site was involved.
- Community input meetings at every school site during September/ October.
 - More than 200 residents participated.
 - Meetings were advertised via Nextdoor, social media, neighborhood associations, direct mail, and school newsletters.

Community Input and Process

- Second round of community input was held for Landels and Bubb on January 12th and 13th.
- The formation of a working group for Monta Loma was also created. Notifications were sent out in the following ways
 - Signs on fields, notices to neighborhood associations, direct mail to homes, notice on NextDoor, school newsletters, social media, school marquee signs, and notices to those who signed up to receive them (via google form)

(links to postcards [Bubb](#) [Landels](#) [Monta Loma](#))

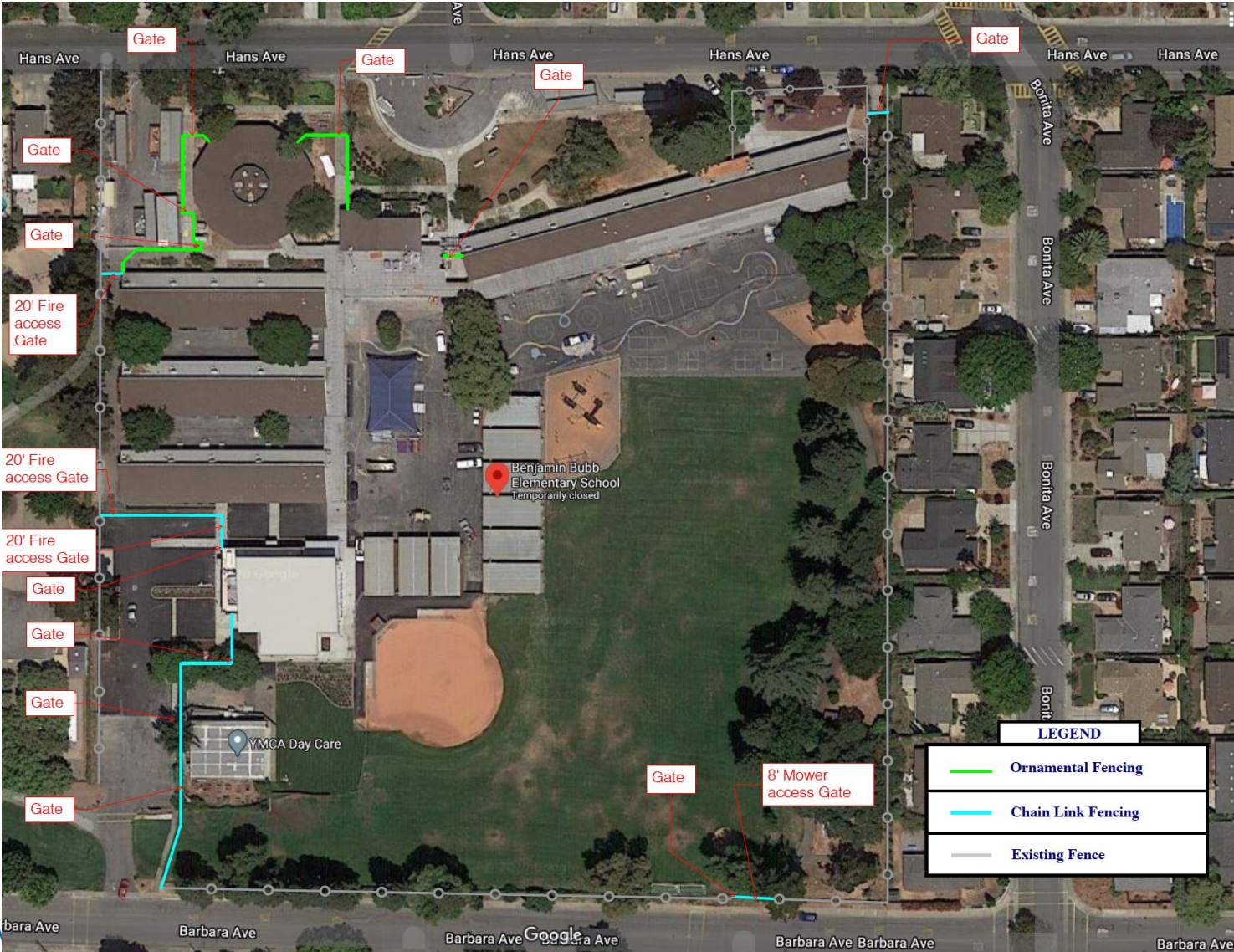
Adjustments Made Based on Feedback

- Having automatic locks at all new gates that can be remotely opened.
- Repositioning the fencing at some locations
- Adding additional gates at some locations
- Adding landscaping (not shown)
- Adding more signage that clearly indicates hours of use and who to call if there is an issue (not shown)

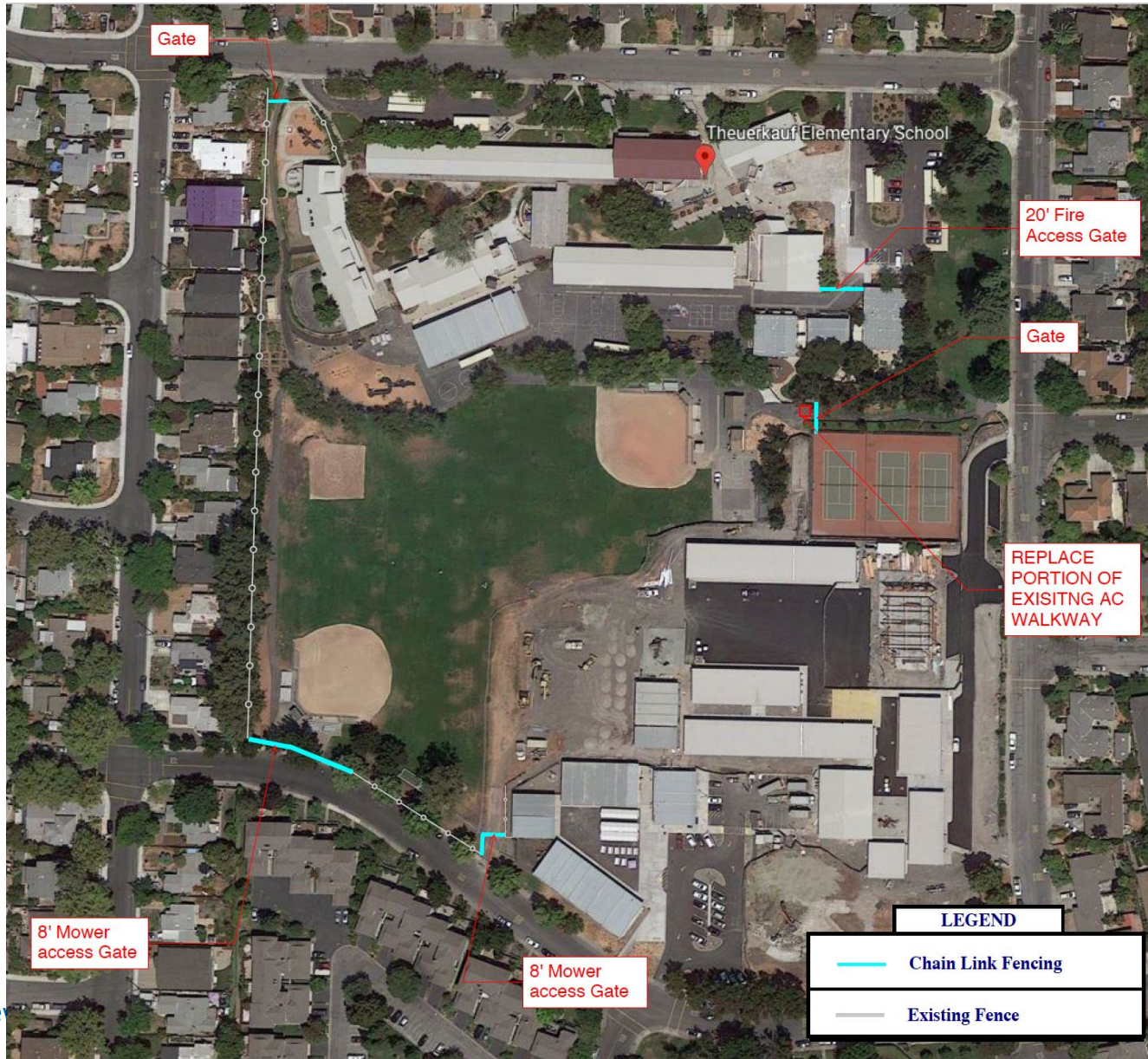


Mountain View Whisman School District

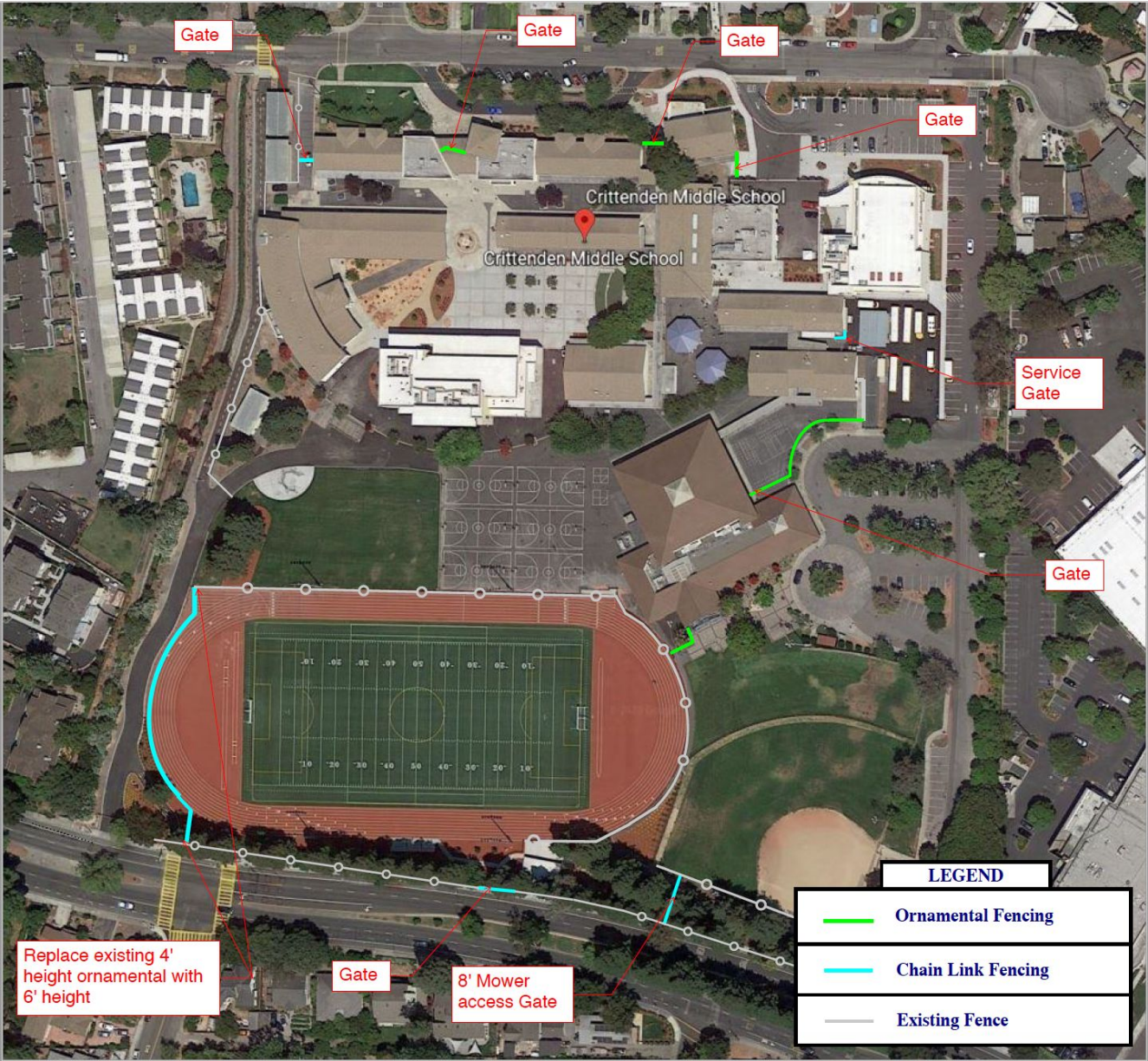
Bubb



Theuerkauf/Stevenson



Crittenden



Mountain View

Replace existing 4' height ornamental with 6' height

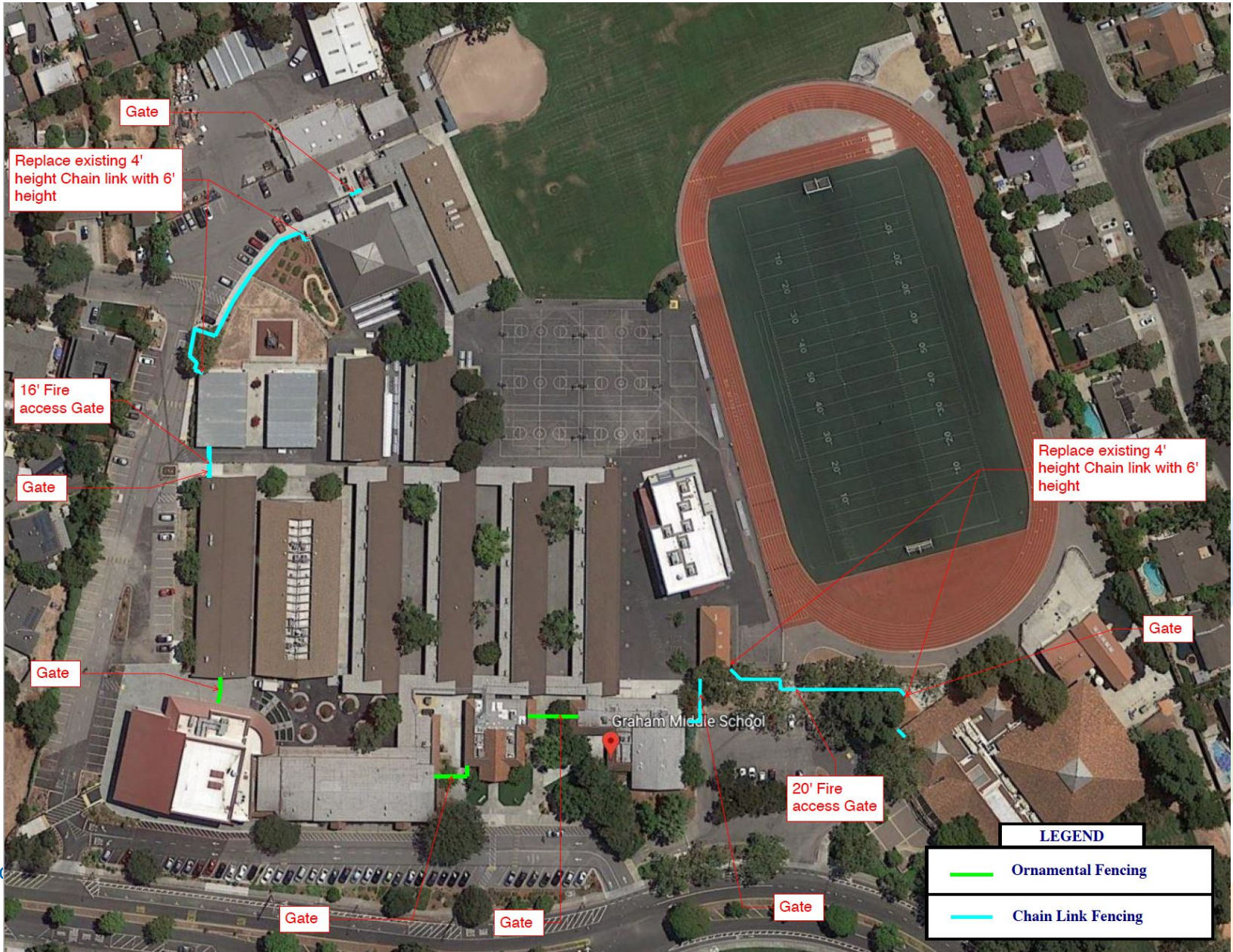
Gate

8' Mower access Gate

LEGEND

- Ornamental Fencing
- Chain Link Fencing
- Existing Fence

Graham



Gate

Replace existing 4' height Chain link with 6' height

16' Fire access Gate

Gate

Gate

Graham Middle School

20' Fire access Gate

Replace existing 4' height Chain link with 6' height

Gate

Gate

Gate

Gate

LEGEND

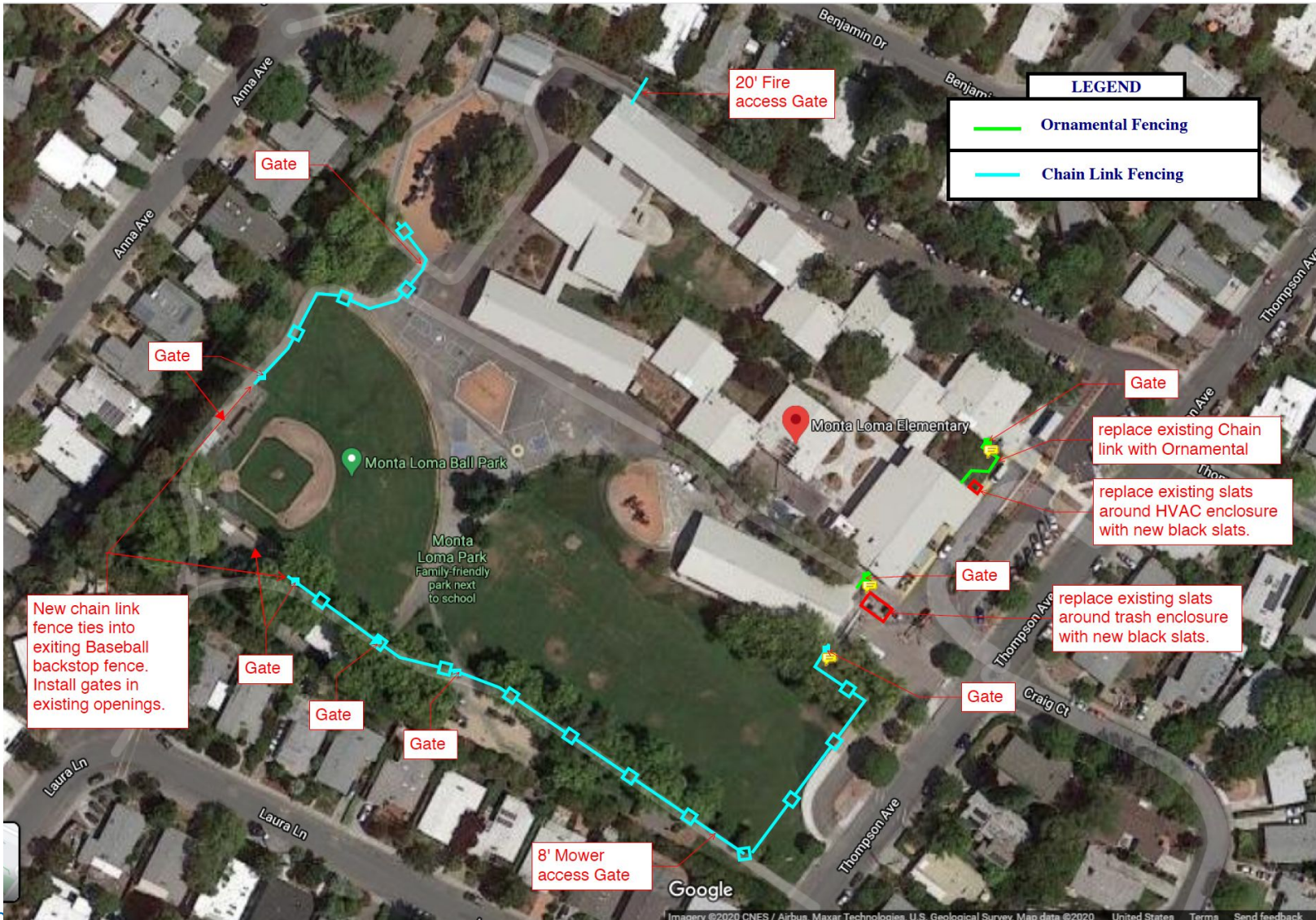
Ornamental Fencing

Chain Link Fencing

Landels



Monta Loma Option #1



Monta Loma Option #2



Mountain View

Access Through Automatically Opening Locks



- Gates with automatic locks would unlock after children are out of school.
- Fields will be accessible as they currently are with no new limitations on how residents currently are allowed to use the fields.

Example of What Ornamental Fencing Will Look Like







Mountain View
Whisman
School District

Next Steps for Monta Loma

Working Together to Find a Solution

- Staff, parents and students have reported that they feel unsafe due to open campuses.
 - We have a responsibility to address the concerns and take preventative measures.
 - Not doing anything is not an option.
 - The answer does not have to be one of our current designs.

Why a Work Group for Monta Loma?

- The Monta Loma school field currently has limited fencing in comparison to other schools so this is a larger change for the community.
- Community concerns about access to green space.
- There are many considerations that need to be taken into account that are not easily done through a large community meeting.

Monta Loma Working Group's Charge

- Provide recommendations to the Superintendent on how to provide safety for students and staff while allowing community access given the District's constraints.
- Representatives will be asked to take all perspectives including MVPD into consideration when making recommendations.
- Become a partner in communicating findings to their communities.
- Superintendent will bring final recommendations to the Board of Trustees.

Monta Loma Work Group Composition

- 2 Community members
- Park and Recreation representative
- 2 Parents (1 from Moffett Field)
- Principal
- 2 staff members
- District administrator

Work Group

- Applications for the work group have been ranked by the District Advisory Committee (DAC).
- The District will send out notification to the applicants selected by the DAC and the first meeting will be held on February 25th
- We will continue to have working meetings and report out to the Board until the group can make a recommendation.