



Mountain View
Whisman
School District

Update: COVID-19 Procedures

Aug. 18, 2022



Principles

- The foundational principle of this guidance is that all students must have access to safe and full in-person instruction and to as much instructional time as possible.
- Evidence indicates that in-person instruction can occur safely without minimum physical distancing requirements when other mitigation strategies are fully implemented.
- Vaccination is available to all students



Mountain View
Whisman
School District

Data

Santa Clara County, California

[State Health Department](#) 

COVID-19 Community Level

 High

Recommended actions based on current level

Wear a mask indoors in public and on [public transportation](#). Stay [up to date](#) with COVID-19 vaccines. [Get tested](#) if you have symptoms. If you are at [high risk for severe illness](#), consider taking [additional precautions](#).

Weekly Metrics Used to Determine the COVID-19 Community Level

Case Rate per 100,000 population	223.67
New COVID-19 admissions per 100,000 population	12.4
% Staffed inpatient beds in use by patients with confirmed COVID-19	7.1%

[How are COVID-19 Community Levels calculated?](#)

*Note: The COVID-19 Community Level and associated metrics presented above are updated weekly **on Thursday** and may differ from the values for the same metrics presented below, which are updated daily.*

Cases & Deaths in Santa Clara County, California

Data through Wed Aug 10 2022

Total Cases	4312
Case Rate (last 7 days)	223.67
% Change (last 7 days)	-22.7

Total Deaths	15
Death Rate (last 7 days)	0.78
% Change (last 7 days)	400

Tue, Jan 21st 2020 - Wed, Aug 10th 2022

Use slider to update time series chart



Vaccinations in Santa Clara County, California

People Vaccinated	At Least One Dose	Fully Vaccinated
Total	1,854,930	1,687,397
% of Total Population	95%	87.5%
Population ≥ 5 Years of Age	1,834,158	1,680,091
% of Population ≥ 5 Years of Age	95%	92.5%
Population ≥ 12 Years of Age	1,717,500	1,573,876
% of Population ≥ 12 Years of Age	95%	95%
Population ≥ 18 Years of Age	1,577,661	1,437,311
% of Population ≥ 18 Years of Age	95%	95%
Population ≥ 65 Years of Age	287,284	261,972
% of Population ≥ 65 Years of Age	95%	95%

Learn more about the [COVID-19 Vaccine](#).

Percent of California's fully vaccinated recipients with valid county of residence: **97.6%**

New CDC guidance - Aug. 11, 2022

“When the COVID-19 Community Level indicates an increase, particularly if the level is high or the school or ECE program is experiencing an outbreak, schools or ECE programs should consider adding layered prevention strategies, described below, to maintain safe, in-person learning and keep ECE programs safely open.”

CDC guidance, con't...

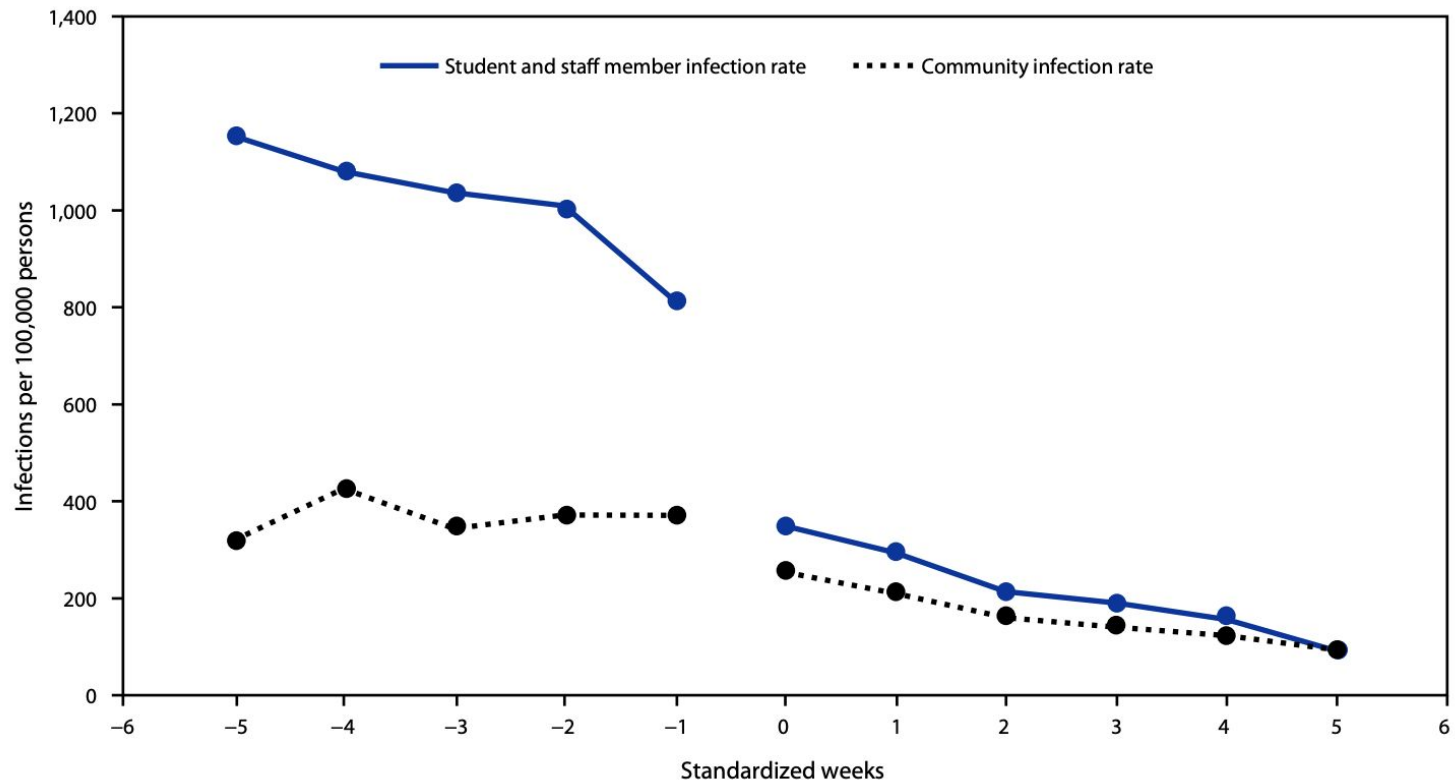
- K-12 schools and ECE programs (e.g., center-based child care, family child care, Head Start, or other early learning, early intervention and preschool/pre-kindergarten programs delivered in schools, homes, or other settings) should put in place a core set of infectious disease prevention strategies as part of their normal operations.
- The addition and layering of COVID-19-specific prevention strategies should be tied to the [COVID-19 Community Levels](#) and community or setting-specific context, such as availability of resources, health status of students, and age of population served. Enhanced prevention strategies also may be necessary in response to an [outbreak](#)
- At a high COVID-19 Community Level, universal indoor masking in schools and ECE programs is recommended, as it is in the community at-large.

CDC guidance, con't...

- Due to increased and forceful exhalation that occurs during physical activity, some sports can put players, coaches, trainers, and others at increased risk for getting and spreading the virus that causes COVID-19. Close contact sports and indoor sports are particularly risky for participants and spectators, especially in crowded, indoor venues. Similar risks may exist for other extracurricular activities, such as band, choir, theater, and other school clubs that meet indoors and entail increased exhalation.
- Equity at both the individual and school levels should be considered in all decision-making. Care should be taken so that decisions related to layered prevention strategies and learning options do not disproportionately affect any group of people.

US Health and Human Services study on the Impact of Masking on Community Spread

FIGURE 2. Student and staff member and community SARS-CoV-2 infection rates before and after* implementation of school mask requirement — 26 school districts, Arkansas, August–October 2021



* Weeks were standardized to align the time before (negative values) and after (positive values) the district changed from no mask requirement to partial or full mask requirement. Time zero indicates the week the policy changed from none to full or partial mask requirement, and the first weekly incidence under a mask requirement policy was measured during the following week. Upon implementation of the mask policy, the incidence among students and staff members decreased by 479.7 per 100,000. Incidence among community members decreased at the same time by 104.6 per 100,000, a difference of 375.0 per 100,000.

National Institute of Health (NIH) study of mandatory masking

Duke University study: School districts with mandatory masking had 7.3 cases of in-school infection for every 100 community-acquired cases. Districts with optional masking had 26.4 cases of in-school infection for every 100 community-acquired cases.

- Researchers studied 61 school districts across nine states. In all, the districts had more than 1.1 million students, from kindergarten through grade 12, and 157,000 staff. School health staff, in collaboration with local public health departments, tracked infections and reported which were acquired in the community and which in schools.
- The districts provided data from late July through mid-December of 2021. Six of the districts had optional masking policies during this period; nine had partial masking (policies that changed during the study or only applied to certain grade levels); and 46 required masking.
- The results were similar when the researchers adjusted for district size and weeks of reporting data.



Mountain View
Whisman
School District

Current COVID Protocols

During CDC High Community designation: Protocols at a Glance

- Masking is **required** indoors for students and staff (*Details below*)
 - **required for** students participating in wind instrument or choral music
 - **required** at large events (assemblies, concerts, etc)
 - **Required** in buses
 - **required** for visitors and volunteers.
- **Mitigation strategies** such as hand washing/ sanitizing, cleaning protocols and high-quality air filtration will continue.
- **Sick individuals** who test positive or are symptomatic should mask and be isolated for 5 days or more (*Details below*)
- **No on-campus, pooled testing program** for students and staff this year. The state is no longer supporting/ recommending this program for all California schools. (*Details below*)

At a Glance

* **MURs will be open for meal** distribution to students. Outdoor seating areas will be maximized for eating times. Physical distancing during lunch is not required (but is good practice)

Can be reinstated as a requirement by the principal in the case of high transmission rates.

* Students who play **aerosol generating instruments** (including recorders) in grades 4-8 and **participate in singing/choir will be required to use regular masks** (student provided) and **instrument masks and bell covers** (MVWSD provided). (Details below)

* **Campus restrictions:** Parents and children who are not in class may be on campus inside the fences until the bell rings at the start of the day, and can return to campus inside the fences after the dismissal bell rings.

* **Volunteer guidelines** remain in effect, and masks required. *(Details below)*

Details: Masking

- *Rationale:* Without regular, pooled testing on campus, it's more difficult for MVWSD to reduce COVID transmission.
- Coming off of summer with many people traveling
- Masking is an effective method - in addition to other layers of prevention like air filtration and vaccination - of preventing severe illness.
- In “High” transmission phase, CDC clearly states: “Wear a well-fitting mask indoors in public, regardless of vaccination status or individual risk (including in K-12 schools and other community settings)”
- Masking helps:
 - ensure that staff are well enough to keep classrooms open for all students
 - students attend school as regularly as possible and continue to make academic gains after closure
 - protect immunocompromised individuals in our community

Details: Masking

Mandatory indoor masking will be required for individual schools and/or the District when the following risk levels are reached:

- CDC data shows community transmission level as “High;” [set by the U.S. Centers for Disease Control and Prevention guidelines.](#)
- Individual schools will resume required masking indoors for a minimum of a 14-day period, when:
 - Within the past 14 days, three or more cases in an individual classroom have occurred in the school, AND more than 5% of the school population (students and staff) is infected. OR,
 - In a 3 consecutive-day span, 10% or more of the student population is absent each day due to illness.

Details: Masking

- We will continue to monitor the COVID-19 community level according to the CDC and County data (Data: Community transmission levels [set by the U.S. Centers for Disease Control and Prevention guidelines](#).
 - Report to the Board of Trustees regularly
 - Stakeholder input
- MVWSD reserves the right to be more restrictive than state/county guidance

COVID Isolation- Students

- Children should stay home if they have any symptoms and get tested. If negative, he/she may return to school 24 hours after fever ends.
- If your child tests positive, he/she should stay isolated at home for 5 days after a positive test and/or onset of symptoms

AND at least 24 hours after fever resolves and other symptoms improve.

He/ She should wear a mask for 10 days when around others.

COVID Isolation- Students

- Strongly recommend that students test at home on Day 5 and stay at home until they test negative or reach day 10.
- Parents: Email or call your school with the date of the positive test.
 - May get missed assignments. Our schools are not offering concurrent, online instruction to students at home.
- All household members of the COVID-19 case should monitor for symptoms, and get tested 3-5 days after potential exposure.
- Instructions on how to isolate and quarantine can be found at [sccstayhome.org](https://www.sccstayhome.org).

COVID Testing and Isolation- Staff

- Staff should stay home if they have any symptoms and get tested. If negative, he/she may return to school 24 hours after fever ends.
- If positive, he/she should stay isolated at home for 5 days after a positive test and/or onset of symptoms
AND at least 24 hours after fever resolves and other symptoms improve.
He/ She should wear a mask for 10 days when around others.

COVID Testing and Isolation- Staff

- Email COVIDResults@mvwsd.org with the date of the positive test and enter absences into the Frontline system
- **First, staff should test at home on Day 5.** If symptoms are resolving and you test negative, then....
- **Employees will need to test at the District Office** prior to returning. Tests should be scheduled for day 5 in order to return on day 6 with a negative result.
- All household members of the COVID-19 case should monitor for symptoms, and get tested 3-5 days after potential exposure.
- Instructions on how to isolate and quarantine can be found at sccstayhome.org.

Testing: Land of Over the Counter

- No on-campus testing
- Parents are no longer required to submit COVID test results in order for students to return to school after their positive case.
- No MVWSD COVID Case Dashboard data (*instead refer to CDC data linked on mvwsd.org/returntolearn*)
- MVWSD will provide at-home rapid tests for students to take the night before Day 2 of school.
 - As supplies allow, MVWSD will provide at-home rapid tests to families to administer before returning to school after breaks throughout the school year.
- We strongly encourage families who have either been traveling or are concerned about a potential exposure to get tested as a preventative measure.

Volunteers, Visitors and Trips

- Frequent volunteers are required to mask and apply to receive a badge and submit proof of COVID vaccination (including booster). [For details, click here.](#) Approval starts with the principal
- Spectators are allowed at events, both indoor and outdoor (performing arts and athletics). Indoor masking required.
- After school PTA / school activities are permitted on campus.
- Field trips are allowed. Indoor/in-vehicle masking required.
- School visitors are required to wear masks and present proof of vaccination (including booster) when checking into the office.

Music

- Students opting to play aerosol generating instruments (including recorders) in grades 4-8 will be required to use instrument masks and bell covers.
 - Families will be provided one set of these items to use for the school year.
- Students in choir programs or singing in elementary music classes will be required to wear their regular, school-day mask.
- Staff is encouraged to hold these classes outside when possible

Mitigation strategies

- School is a safe place due to our attention to mitigation strategies
- Cleaning: Daily cleaning and sanitizing protocols with an emphasis on high-traffic areas will continue.
- Our schools' HVAC systems have MERV-13 filters, which is the highest-grade filter available for our units, or air purifiers with filtration ratings at least as high as the MERV-13. Additionally dampers on all of our units are maximized to take in as much outside air as possible. Portable HEPA filters are in every classroom and office area. Our District works with mechanical engineers who advise us on settings and upgrades.
- Physical barriers at reception desks and library desks will be removed. Students desk shields will not be used.

Close contact notifications

- Parents of students and staff members who are identified as a close contact at school to a positive case are notified.
- A close contact is someone who has been within 0-6 feet of the positive case for more than 15 minutes over a 24-hour period indoors during the two-day period prior to the start of symptoms (or two days before the positive COVID-19 specimen collection date). Typically, these are the children in the positive case's classroom, in addition to any individuals who have been in small groups with the positive case.
- Due to self-reported positive case data from families and the numbers of positive cases at any given time, MVWSD will employ the “group contact tracing” notification method for close contacts. It’s possible that entire grade levels or schools would receive a close contact notification at one time.



Mountain View
Whisman
School District

Considerations

When community spread level drops

- Only one change in MVWSD Covid protocol will occur
- MVWSD moves general classroom indoor masking to strongly recommended
 - **Masking will still be required for** students participating in wind instrument or choral music
 - **required** at large events (assemblies, concerts, etc)
 - **Required** in buses
 - **required** for visitors and volunteers.

Notification to parents / community

- Community spread data is released Thursday night
 - Friday notification to parents about change in community status for implementation on Monday

Change is constant

- Again, this year will be different from the last two pandemic years.
- Guidance from Santa Clara County Department of Public Health, [Centers for Disease Control and Prevention \(CDC\)](#) and the [California Department of Public Health](#) has changed
- COVID is still present at high rates in our community. With your support, MVWSD will work to manage this disease in sustainable and adaptive ways