

MOUNTAIN VIEW
WHISMAN SD - BUBB ES

BUBB ES
525 HANS AVE.
MOUNTAIN VIEW, CA
94040

Guidedpost Solutions LLC. DISCLAIMER

THIS DESIGN INCLUDING SPECIFICATIONS, DRAWINGS, DETAILS AND DESIGN CONCEPTS IS THE PROPERTY OF Guidedpost Solutions LLC, AND IS FURNISHED ON A CONFIDENTIAL BASIS, WITH THE EXPRESSED UNDERSTANDING THAT IT WILL NOT BE SOLD, COPIED, TRANSFERRED, OR USED FOR PURPOSES OTHER THAN INTENDED. ANY PROJECT DESIGN PACKAGE AND SPECIFICATIONS PROVIDED BY Guidedpost Solutions LLC FOR THE PURPOSE OF CONSTRUCTION AND COORDINATION MAY NOT BE CHANGED WITHOUT THE EXPRESS WRITTEN CONSENT OF Guidedpost Solutions LLC.

[illegible]

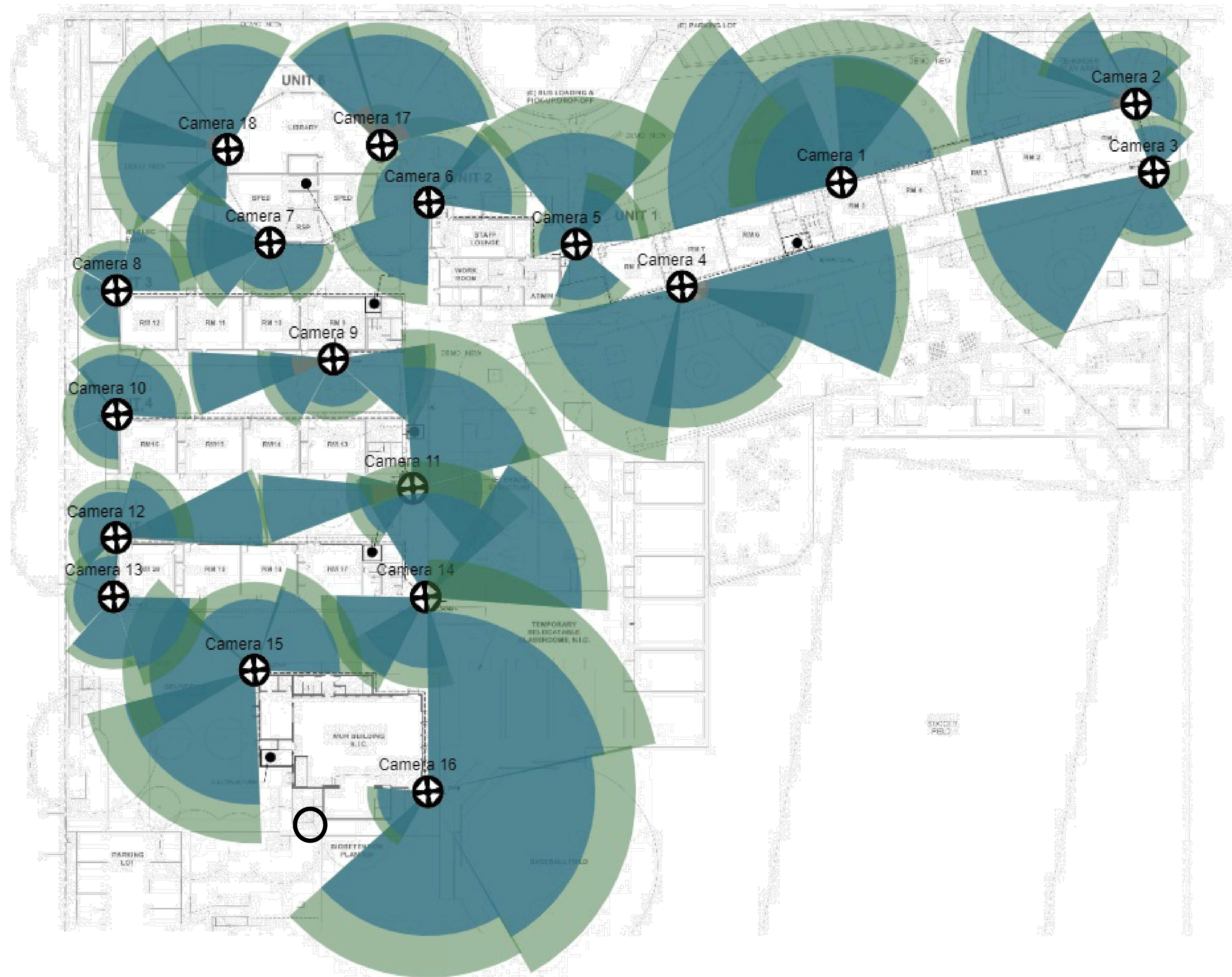
75% CD

DATE:	3/31/2022
CASE NUMBER:	AK210081
DRAWN BY:	S
CHECKED BY:	M

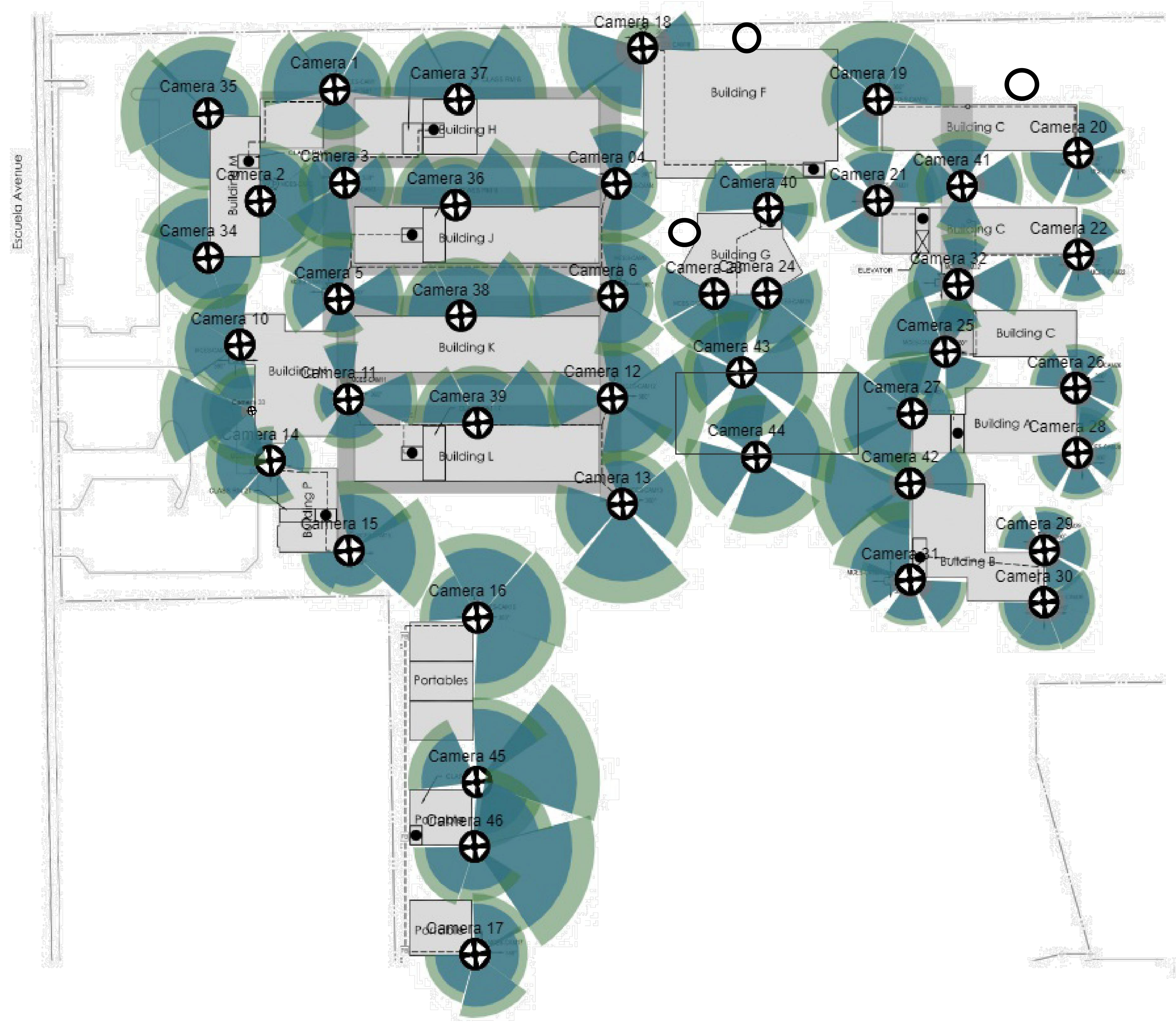
SHEET TITLE:
VIDEO SURVEILLANCE
SITE FIELD OF VIEWS
PLAN

HEET:

SE100.1



○ Indicates Additional Camera Location



MOUNTAIN VIEW WHISMAN
SD - CASTRO & MISTRAL

CASTRO & MISTRAL
505 ESCUELA AVE
MOUNTAIN VIEW, CA
94041

Guidepost Solutions LLC, DISCLAIMER
THIS DESIGN INCLUDING SPECIFICATIONS, DRAWINGS, DETAILS AND DESIGN CONCEPTS IS THE PROPERTY OF Guidepost Solutions LLC, AND IS FURNISHED ON A CONFIDENTIAL BASIS, WITH THE UNDERSTANDING THAT IT WILL NOT BE SOLD, COPIED, REPRODUCED, TRANSFERRED, OR USED FOR PURPOSES OTHER THAN INTENDED. ANY PROJECT DESIGN PACKAGE AND SPECIFICATIONS PROVIDED BY Guidepost Solutions LLC, FOR THE PURPOSE OF CONSTRUCTION AND COORDINATION MAY NOT BE CHANGED WITHOUT THE EXPRESS WRITTEN CONSENT OF Guidepost Solutions LLC.

MARK	DATE	DESCRIPTION
	03/31/22	75% CD
	11/09/21	50% CD FOV
	08/11/21	DESIGN DEVELOPMENT

75% CD

DATE:
03/31/2022
CASE NUMBER:
OAK210081
DRAWN BY:
PS
CHECKED BY:
AM
SHEET TITLE:
VIDEO SURVEILLANCE
SITE FIELD OF VIEWS
PLAN

SHEET:
SE100.1

WHISMAN SD -
CRITTENDEN MS

RITTENDEN MS

1701 ROCK ST.
MOUNTAIN VIEW, CA
94043

Cost Solutions LLC. DISCLAIMER

SIGN INCLUDING SPECIFICATIONS, DRAWINGS, AND DESIGN CONCEPTS IS THE PROPERTY OF post Solutions LLC, AND IS FURNISHED ON A CONFIDENTIAL BASIS, WITH THE EXPRESSED UNDERSTANDING THAT IT WILL NOT BE SOLD, COPIED, REPRODUCED, OR USED FOR PURPOSES OTHER THAN IDEAS, ANY PROJECT DESIGN PACKAGE AND SPECIFICATIONS PROVIDED BY Guidepost Solutions LLC FOR THE PURPOSE OF CONSTRUCTION AND MODIFICATION MAY NOT BE CHANGED WITHOUT THE WRITTEN CONSENT OF Guidepost Solutions LLC.

+	+
+	+
+	+
+	+
+	+
+	+
+	+
+	+
+	+
+	+
03/31/22	75% CD
11/09/21	50%CD FOV
08/11/21	DESIGN DEVELOPMENT
DATE	DESCRIPTION

75% CD

/2022

NUMBER:
10081

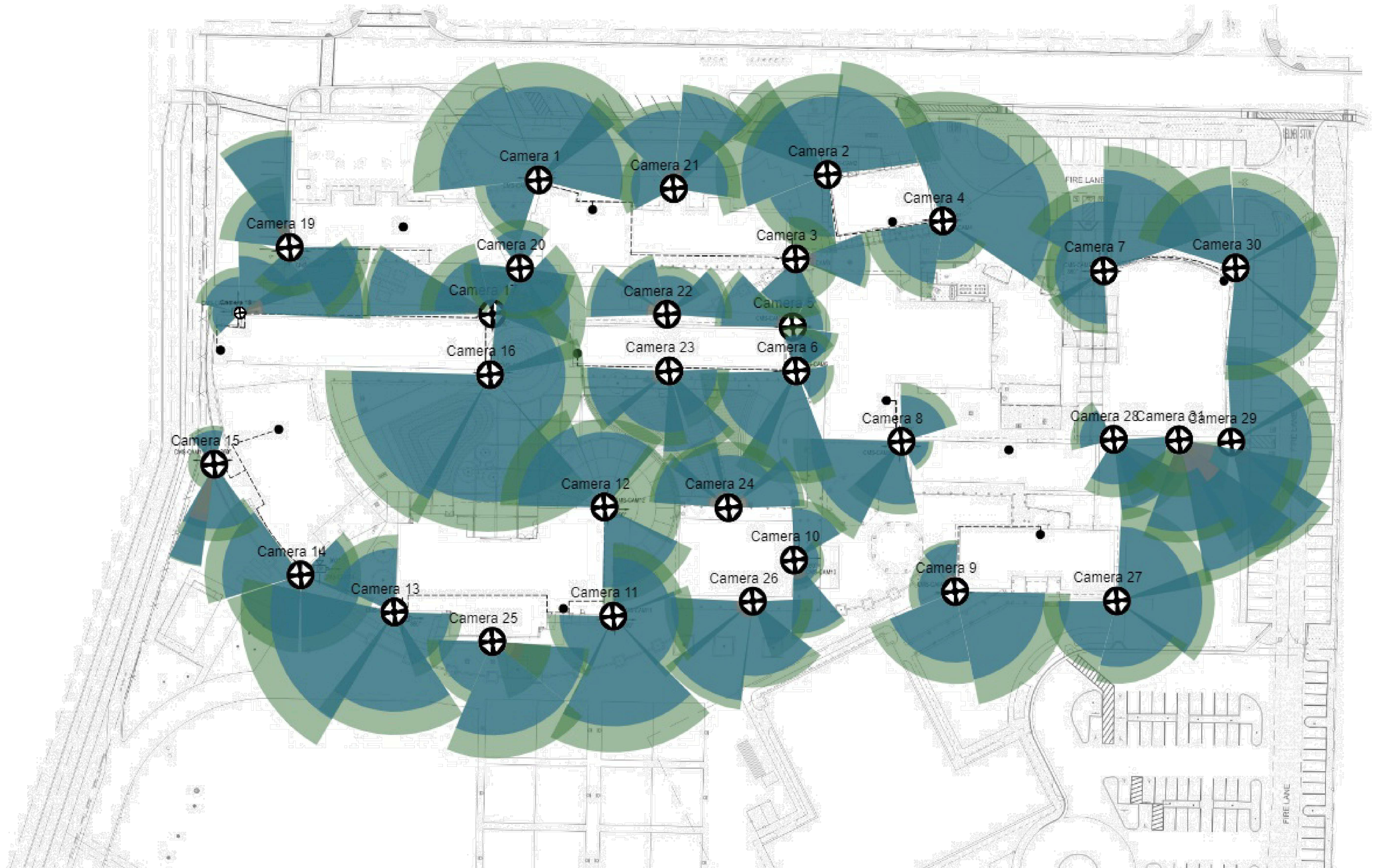
BY: _____

ED BY:

TITLE:

VIDEO SURVEILLANCE THE FIELD OF VIEWS PLAN

SE100 1



MOUNTAIN VIEW
WHISMAN SD - GRAHAM
MS

GRAHAM MS
1175 CASTRO ST.
MOUNTAIN VIEW, CA
94040

	*	*
		*
	*	*
	*	*
	*	*
	*	*
	*	*
	*	*
	*	*
	*	*
03/31/22		75% CD
11/09/21		50%CD FOV
08/11/21		DESIGN DEVELOPMENT
K DATE		DESCRIPTION

75% CD

E:
11/2022

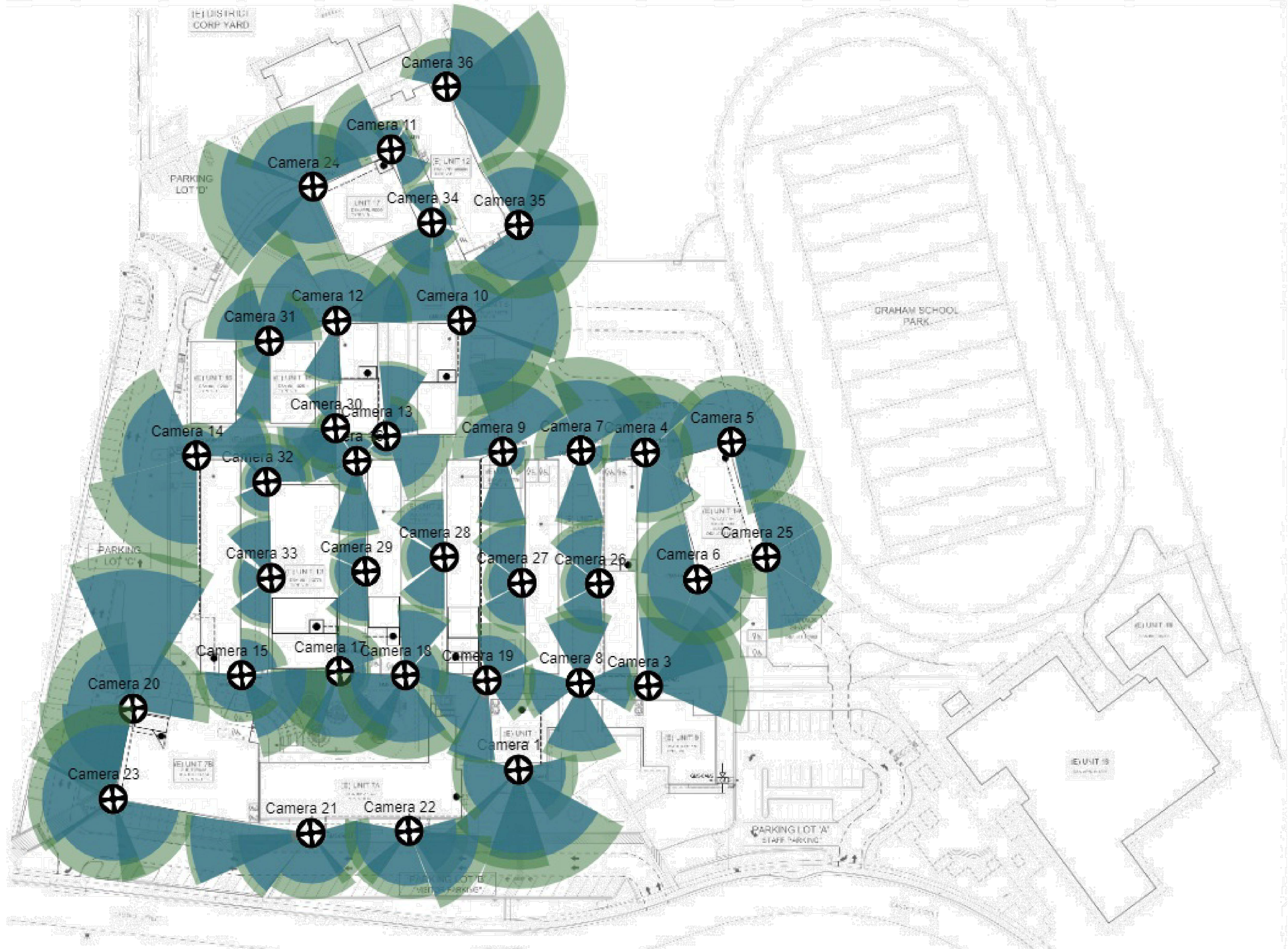
E NUMBER:
K210081

OWN BY:

CKED BY: _____

PROJECT TITLE: VIDEO SURVEILLANCE WIDE FIELD OF VIEWS PLAN

SE100.1



MOUNTAIN VIEW
WHISMAN SD - AMY IMAI
ES

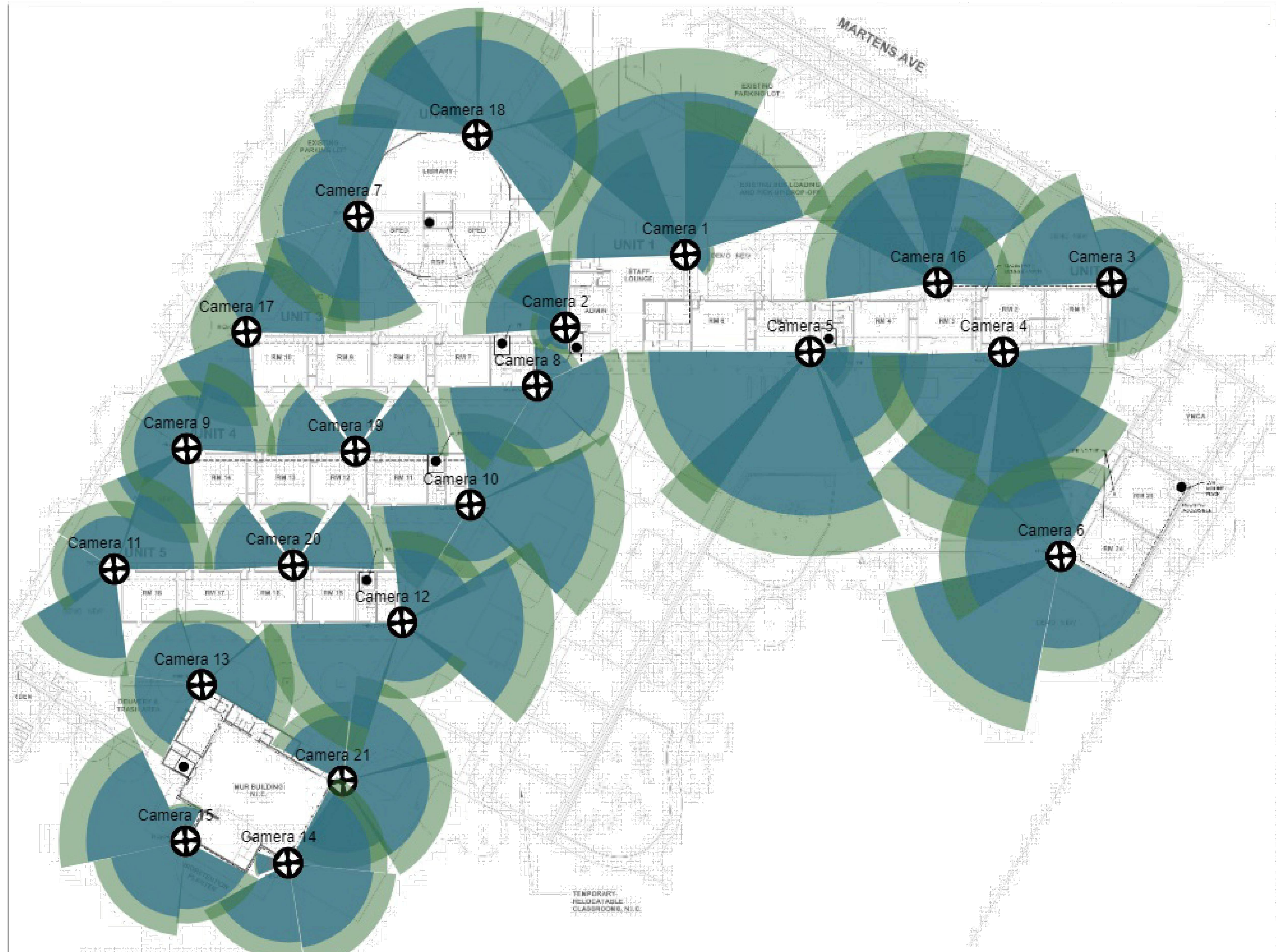
Guidepost Solutions LLC. DISCLAIMER

THIS DESIGN INCLUDING SPECIFICATIONS, DRAWINGS, DETAILS AND DESIGN CONCEPTS IS THE PROPERTY OF Guidepost Solutions LLC, AND IS FURNISHED ON A CONFIDENTIAL BASIS, WITH THE EXPRESSED UNDERSTANDING THAT IT WILL NOT BE SOLD, COPIED, TRANSFERRED, OR USED FOR PURPOSES OTHER THAN INTENDED. ANY PROJECT DESIGN PACKAGE AND SPECIFICATIONS PROVIDED BY Guidepost Solutions LLC FOR THE PURPOSE OF CONSTRUCTION AND COORDINATION MAY NOT BE CHANGED WITHOUT THE EXPRESS WRITTEN CONSENT OF Guidepost Solutions LLC.

75% CD

HEET TITLE:
VIDEO SURVEILLANCE
SITE FIELD OF VIEWS
PLAN

SE100.1



L:

MOUNTAIN VIEW WHISMAN SD - LANDELS ES

LANDELS ES
115 W DANA ST
MOUNTAIN VIEW, CA
94041

Geopost Solutions LLC. DISCLAIMER

DESIGN INCLUDING SPECIFICATIONS, DRAWINGS, AND ALL DESIGN CONCEPTS IS THE PROPERTY OF Geopost Solutions LLC, AND IS FURNISHED ON A CONFIDENTIAL BASIS, WITH THE EXPRESSED UNDERSTANDING THAT IT WILL NOT BE SOLD, COPIED, REPRODUCED, REFINISHED, REPAIRED, REUSED, TRANSFERRED, OR USED FOR PURPOSES OTHER THAN THOSE INTENDED. ANY PROJECT DESIGN PACKAGE AND SPECIFICATIONS PROVIDED BY Geopost Solutions LLC FOR THE PURPOSE OF CONSTRUCTION AND INSTALLATION MAY NOT BE CHANGED WITHOUT THE WRITTEN CONSENT OF Geopost Solutions LLC.

	*	*
		*
	*	*
	*	*
	*	*
	*	*
	*	*
	*	*
	*	*
	*	*
03/31/22		75% CD
11/09/21		50%CD FOV
08/11/21		DESIGN DEVELOPMENT
K DATE		DESCRIPTION

75% CD

DATE: 01/2022

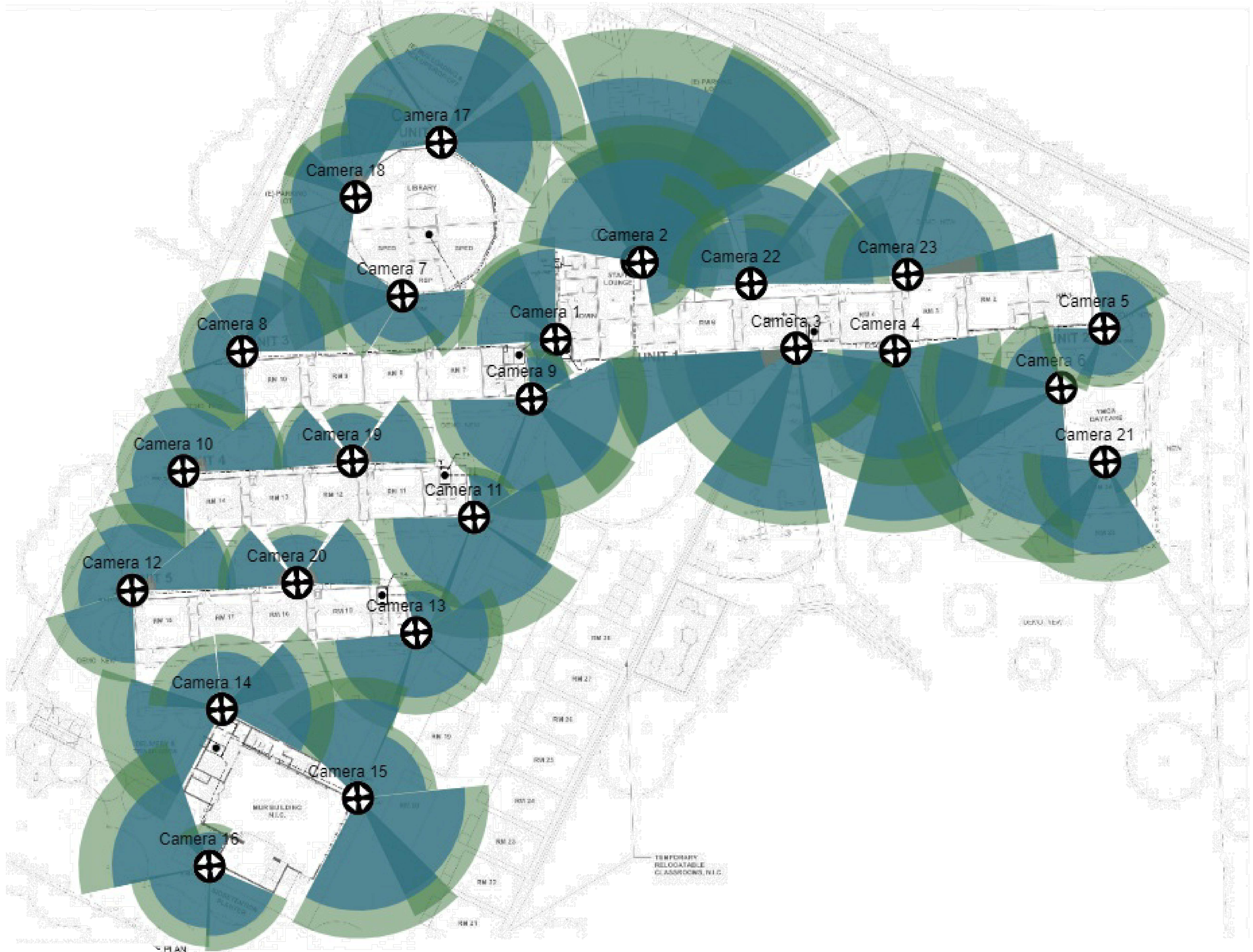
E NUMBER: 210081

OWN BY:

CKED BY:

VIDEO SURVEILLANCE SITE FIELD OF VIEWS PLAN

SE100.1



MOUNTAIN VIEW
WHISMAN SD - MONTA
LOMA ES

MONTA LOMA
10 THOMPSON AVE
MOUNTAIN VIEW, CA
94043

Guidedpost Solutions LLC. DISCLAIMER

THIS DOCUMENT, INCLUDING SPECIFICATIONS, DRAWINGS, AND DESIGN CONCEPTS IS THE PROPERTY OF Guidedpost Solutions LLC, AND IS FURNISHED ON A CONFIDENTIAL BASIS, WITH THE EXPRESSED UNDERSTANDING THAT IT WILL NOT BE SOLD, COPIED, REPRODUCED, OR USED FOR PURPOSES OTHER THAN THOSE INTENDED. ANY PROJECT DESIGN PACKAGE AND SPECIFICATIONS PROVIDED BY Guidedpost Solutions LLC ARE THE PROPERTY OF Guidedpost Solutions LLC. NO REUSE OR REPRODUCTION OF ANY PART OF THIS INFORMATION MAY NOT BE CHANGED WITHOUT THE WRITTEN CONSENT OF Guidedpost Solutions LLC.

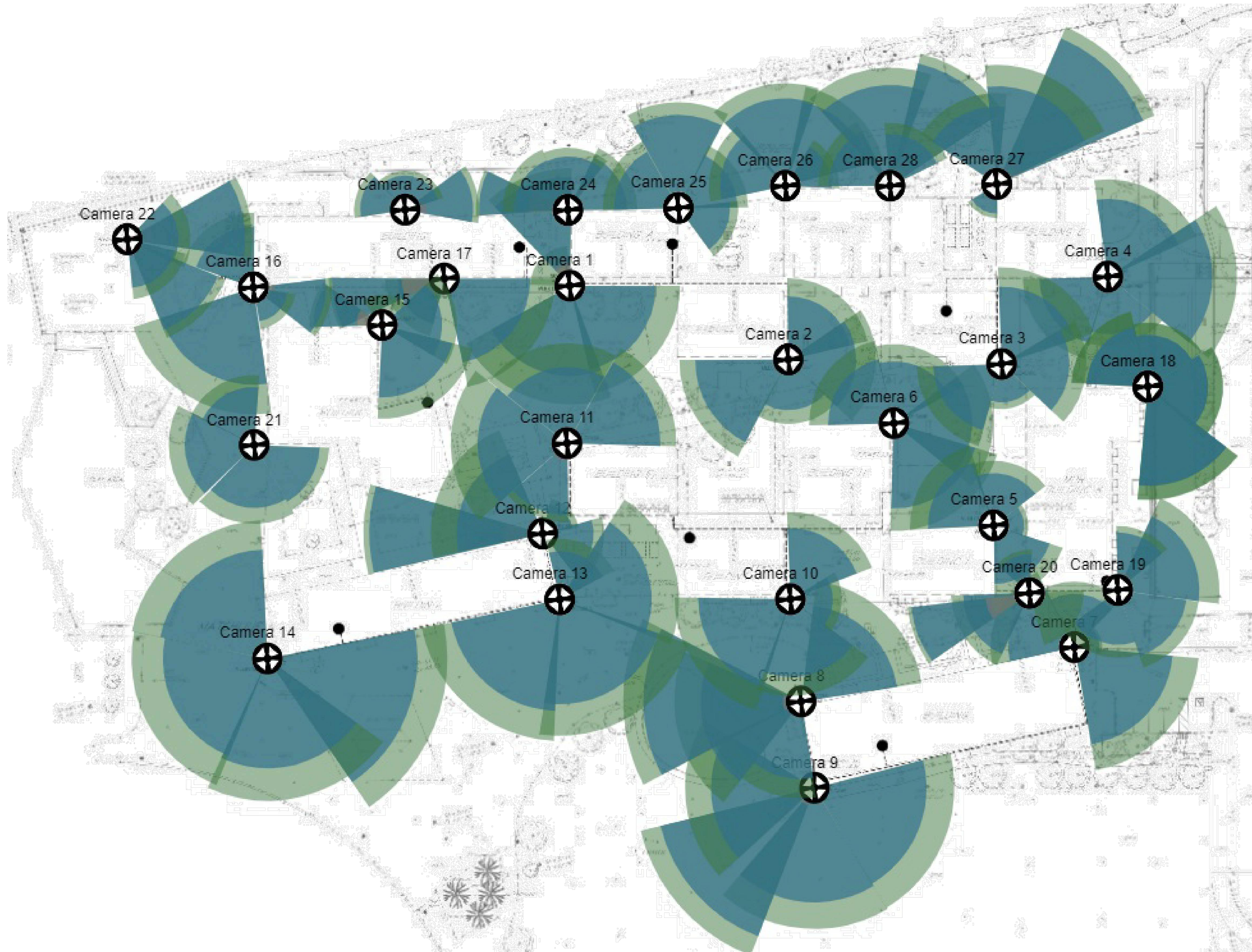
+	+
+	+
+	+
+	+
+	+
+	+
+	+
+	+
+	+
+	+
03/31/22	75% CD
11/09/21	50%CD FOV
08/11/21	DESIGN DEVELOPMENT
DATE	DESCRIPTION

75% CD

01/2022
NUMBER:
110081
BY:
CHECKED BY:

TITLE:
LEO SURVEILLANCE
TE FIELD OF VIEWS
PLAN

SE100.1



MOUNTAIN VIEW
WHISMAN SD -
STEVENSON ES & DO

EVENSON ES & DO

10 SAN PIERRE WAY
MOUNTAIN VIEW, CA
94043

Cost Solutions LLC. DISCLAIMER

IGN INCLUDING SPECIFICATIONS, DRAWINGS, AND DESIGN CONCEPTS IS THE PROPERTY OF post Solutions LLC, AND IS FURNISHED ON A CONFIDENTIAL BASIS. WITH THE EXPRESSED UNDERSTANDING THAT IT WILL NOT BE SOLD, COPIED, REPRODUCED, OR USED FOR PURPOSES OTHER THAN ANY PROJECT DESIGN PACKAGE AND SPECIFICATIONS PROVIDED BY Guidepost Solutions LLC FOR THE PURPOSE OF CONSTRUCTION AND MAINTENANCE. NO PART OF THIS DOCUMENT OR INFORMATION MAY NOT BE CHANGED WITHOUT THE WRITTEN CONSENT OF Guidepost Solutions LLC.

+	+
+	+
+	+
+	+
+	+
+	+
+	+
+	+
+	+
+	+
03/31/22	75% CD
11/09/21	50%CD FOV
08/11/21	DESIGN DEVELOPMENT
DATE	DESCRIPTION

75% CD

10000

NUMBER:

IN BY:

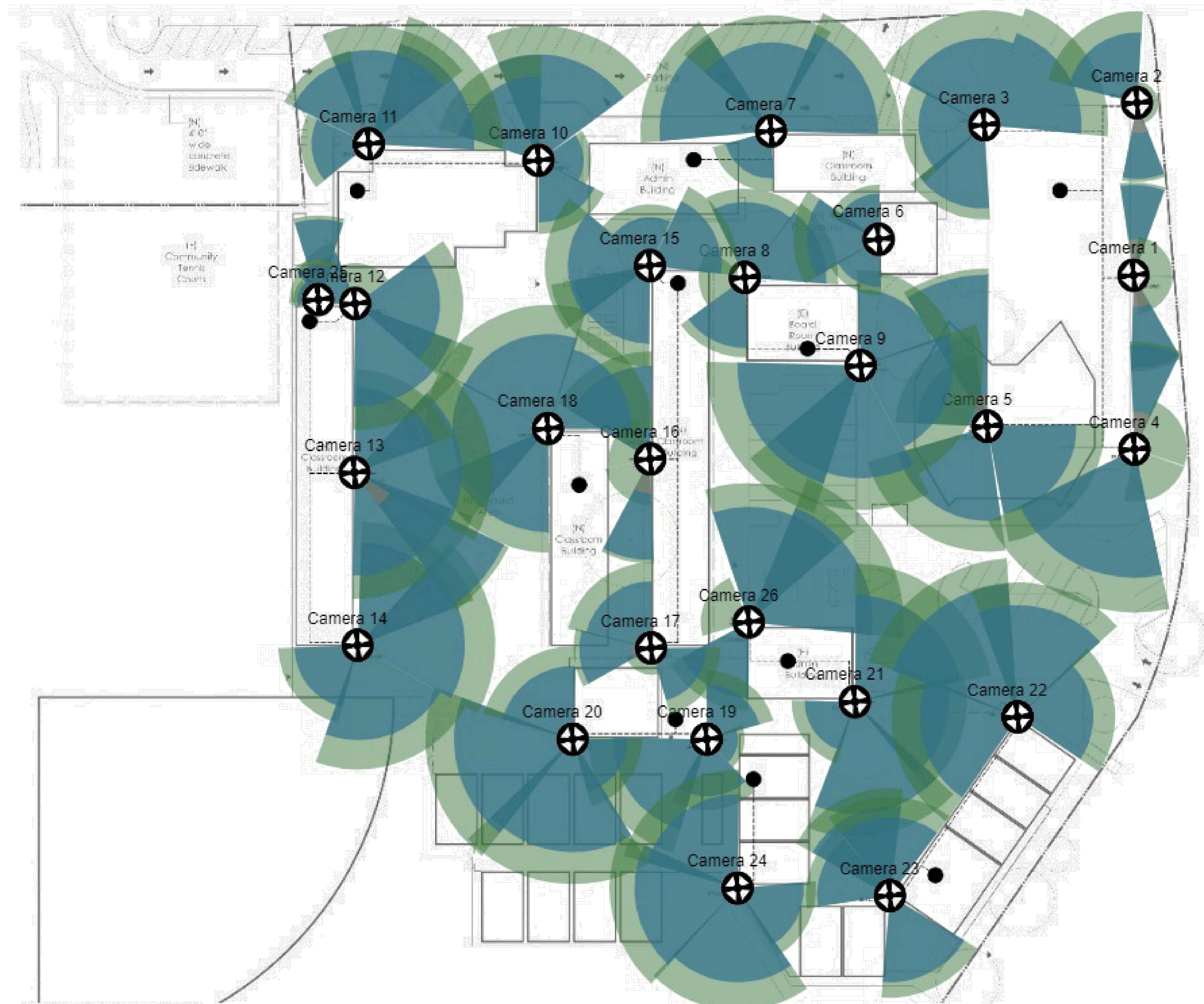
APPROVED BY:

_____ TITLE: _____

VIDEO SURVEILLANCE THE FIELD OF VIEWS PLAN

T:

SE100.1



SEAL:

MOUNTAIN VIEW
WHISMAN SD -
THEUERKAUF ES

THEUERKAUF ES
1625 SAN LUIS AVE.
MOUNTAIN VIEW, CA
94043

Guidepost Solutions LLC, DISCLAIMER
THIS DESIGN INCLUDING SPECIFICATIONS, DRAWINGS, DETAILS AND DESIGN CONCEPTS IS THE PROPERTY OF Guidepost Solutions LLC, AND IS FURNISHED ON A CONFIDENTIAL BASIS, WITH THE UNDERSTANDING THAT IT WILL NOT BE SOLD, COPIED, REPRODUCED, TRANSFERRED, OR USED FOR PURPOSES OTHER THAN INTENDED. ANY PROJECT DESIGN PACKAGE AND SPECIFICATIONS PROVIDED BY Guidepost Solutions LLC, FOR THE PURPOSE OF CONSTRUCTION AND COORDINATION MAY NOT BE CHANGED WITHOUT THE EXPRESS WRITTEN CONSENT OF Guidepost Solutions LLC.

DATE	03/31/22	75% CD
DATE	11/09/21	50%CD FOV
DATE	08/11/21	DESIGN DEVELOPMENT

MARK DATE DESCRIPTION

75% CD

DATE:
03/31/2022
CASE NUMBER:
OAK210081
DRAWN BY:
PS
CHECKED BY:
AM

SHEET TITLE:
VIDEO SURVEILLANCE
SITE FIELD OF VIEWS
PLAN

SHEET:
SE100.1

