



Mountain View
Whisman
School District

Measure T Phase 1 Construction Update

May 5, 2022



Mountain View
Whisman
School District

Board Goals

Strategic Plan 2021

Goal 5 Resource Stewardship

- Goal 5: Students, staff and community members will have access to various resources, such as technology, facilities, furniture, equipment, etc., in a fiscally responsible manner, to fulfill the mission of MVWSD.

Strategic Plan 2027

Goal Area 5 Equitable Distribution of Resources that Support Student Success

- Goal 5a: Ensure facilities and resources equitably serve all students



Mountain View
Whisman
School District

Master Facility Plan

Master Facilities Plan

- Board approved a 10-year master facilities plan that accommodates growth while prioritizing the work ahead based on needs and input.
- The plan was approved on December 12th, 2019 prior to Measure T passing.
- New MFP continues the planning efforts of the former 2010 plan
- Solid foundation for student growth and upgrades to infrastructure
- Informs Bond Measure T

Master Facilities Plan Feedback

- All schools' stakeholders met to discuss the Master Facility Plan
 - All school communities discussed potential solutions
 - New schools in North Bayshore & East Whisman
 - Reuse leased properties
 - Expand capacity of existing schools
 - Redraw school boundaries
 - Grade level schools
- Includes feedback from community in online ThoughtExchange

Master Facilities Plan

- MFP describes how MVWSD will modernize and utilize existing school campuses for:
 - Safety and operational efficiency
 - Short-term growth
 - Long-term growth



Mountain View
Whisman
School District

Measure T

Funding the Master Facilities Plan

- March 3, 2020 Bond Measure T could be spent on:
 - Growth, Safety, Operational Efficiency
 - Short-term growth solutions
 - Staff housing
 - Repayment of Vargas Elementary construction
- Bond language is limited to 75 words and is broadly written to incorporate any projects that may be needed



Mountain View
Whisman
School District

Facilities Priorities:

Short-term growth, operational
efficiency and safety

What Does This Mean for Our Schools?

Even though MFP identifies many projects to be done in the next 10 years, MVWSD has limited bond capacity. The MFP prioritizes:

- Safety and operational efficiency projects planned for all schools
 - Projects address facility needs identified in 2010
 - Some address evolving priorities
 - Short-term growth projects are proposed where substantial growth is occurring



Mountain View
Whisman
School District

Update: Summer 2022 Measure T Projects by Site

Bubb Elementary School

Paving and Utilities

- Onsite work scheduled to begin in June and will include resurfacing and restriping of existing blacktop play space and seal coat of existing asphalt between classroom wings.

Access Control Project

- Work will include installation of card readers and associated equipment for electronic access of classrooms and office spaces.
- Planned to begin in July 2021 and be completed by January 2023. Work to install equipment will take place during normal business hours during summer of 2022 and move to after hours work once classes resume in August.

Bubb (cont'd)

Surveillance Camera Project

- Scope of work includes installation of surveillance cameras and associated equipment in accordance with the Board approved camera policy.
- Construction is scheduled for June 2022 to September 2022.

Site Lighting

- Scope of work includes installation of site lighting to illuminate path of travel from parking and entry points to classrooms and offices.
- Construction scheduled for June 2022 to August 2022.

Mountain View Whisman School District



Mountain View Whisman School District



Mountain View Whisman School District



Castro Elementary School

Access Control Project

- Work will include installation of card readers and associated equipment for electronic access of classrooms and office spaces.
- Planned to begin in July 2021 and be completed by January 2023. Work to install equipment will take place during normal business hours during summer of 2022 and move to after hours work once classes resume in August.

Surveillance Camera Project

- Scope of work includes installation of surveillance cameras and associated equipment in accordance with the Board approved camera policy.
- Construction is scheduled for June 2022 to September 2022.

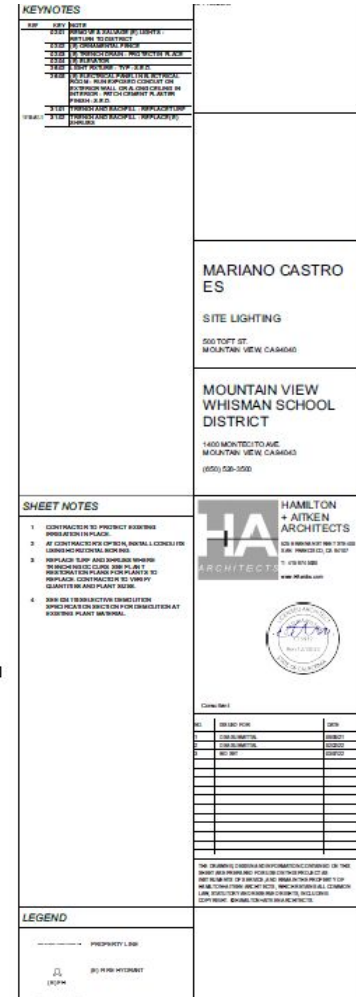
Site Lighting

- Scope of work includes installation of site lighting to illuminate path of travel from parking and entry points to classrooms and offices.
- Construction schedule is June 2022 to August 2022.

Mountain View Whisman School District



Mountain View Whisman School District



Crittenden Middle School

Solar Project

- Scope of work includes installation of rooftop and ground mounted solar arrays, one (1) EV charging station with 2 ports and associated equipment.
- Onsite work scheduled to begin in June 2022 and run through December 2022.

HVAC Upgrades

- Replacement of existing HVAC units in classrooms and administration building.
- Scheduled for June 2022 to August 2022.

Crittenden (cont'd)

Access Control Project

- Work will include installation of card readers and associated equipment for electronic access of classrooms and office spaces.
- Planned to begin in July 2021 and be completed by January 2023. Work to install equipment will take place during normal business hours during summer of 2022 and move to after hours work once classes resume in August.

Surveillance Camera Project

- Scope of work includes installation of surveillance cameras and associated equipment in accordance with the Board approved camera policy.
- Construction is scheduled for June 2022 to September 2022.

Crittenden (cont'd)

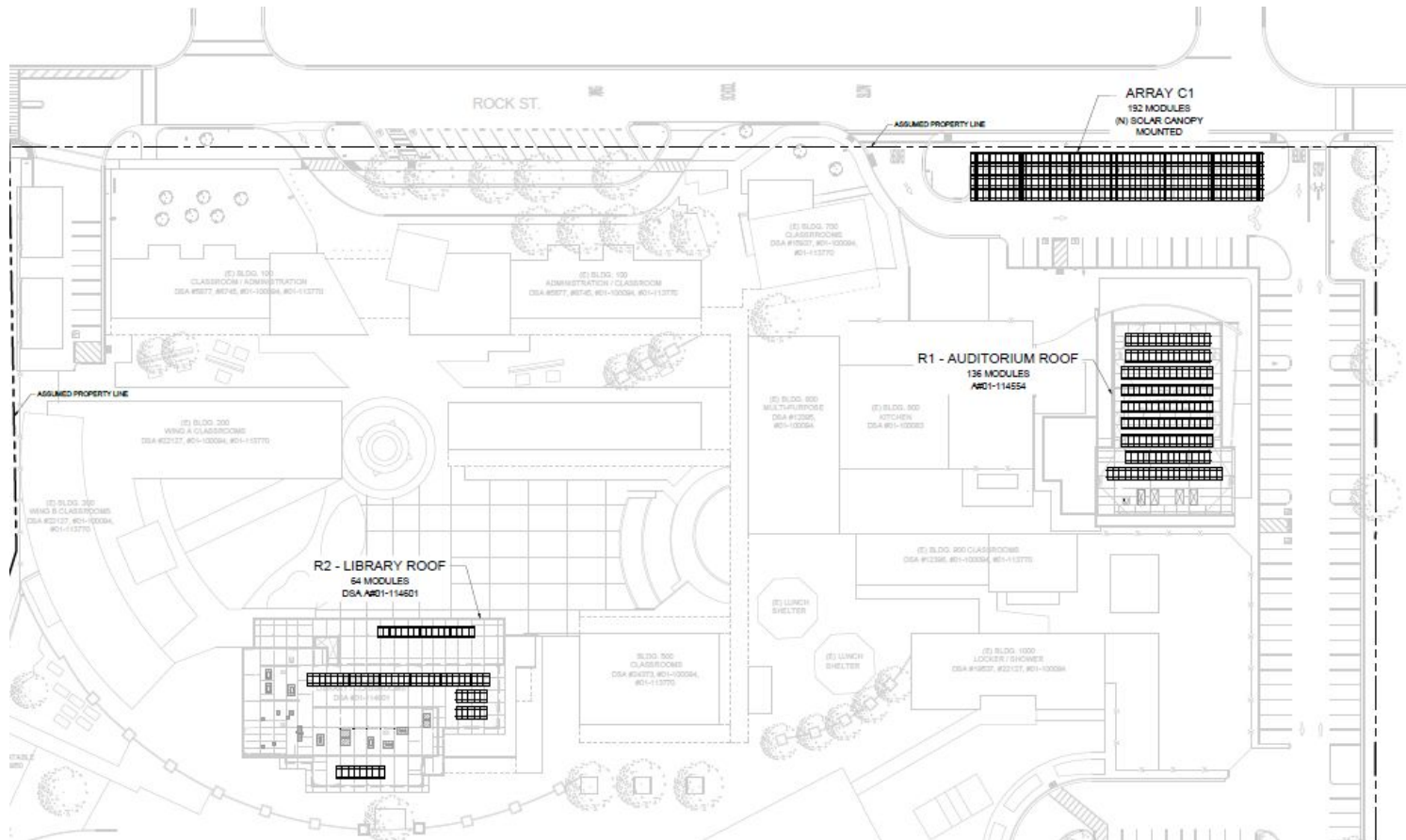
Site Lighting






- Scope of work includes installation of site lighting to illuminate path of travel from parking and entry points to classrooms and offices.
- Construction scheduled for June 2022 to August 2022.

Paving Project

- Scope of work includes demolition and repaving of a section of drive aisle and parking between Rock Street and the parking lot adjacent to the sports center.
- Construction scheduled for June 2022 to July 2022.

Crittenden Solar



	APP: 01-119533 (INC.) REVIEWED FOR BY: _____ FILED: _____ ACS: <input type="checkbox"/> DATE: 02/07/2020
CLIENT _____	
MOUNTAIN VIEW WHISMAN SCHOOL DISTRICT	
DESIGNER _____	
 ENGIE ENGINE SERVICES U.S. 4000 MIDWAY AVENUE, SUITE 100 SAN JOSE, CA 95117 TEL: 844-876-2078 info@engiesoft.com	
PROJECT LOCATION _____	
CRITTENDEN MIDDLE SCHOOL 1701 ROCK STREET MOUNTAIN VIEW, CA 94043	
STRUCTURAL ENGINEER _____	
	
ELECTRICAL ENGINEER _____	
 BLYMYER ENGINEERS 1100 MARINA BLVD, SUITE 10000 BOX 9100 ALBUQUERQUE, NM 87101 505.821.2078	
ENGINEER STAMP _____	
	
ISSUE _____	
<div style="display: flex; justify-content: space-around; align-items: center;"> <div>  <div style="border: 1px solid black; padding: 2px;"> 02/03/2020 02/03/2020 </div> </div> <div> 500 PDR REVIEW 750 PDR REVIEW </div> </div>	

Mountain View Whisman School District



HWAC Mediation and Employment
Crittenden Middle School

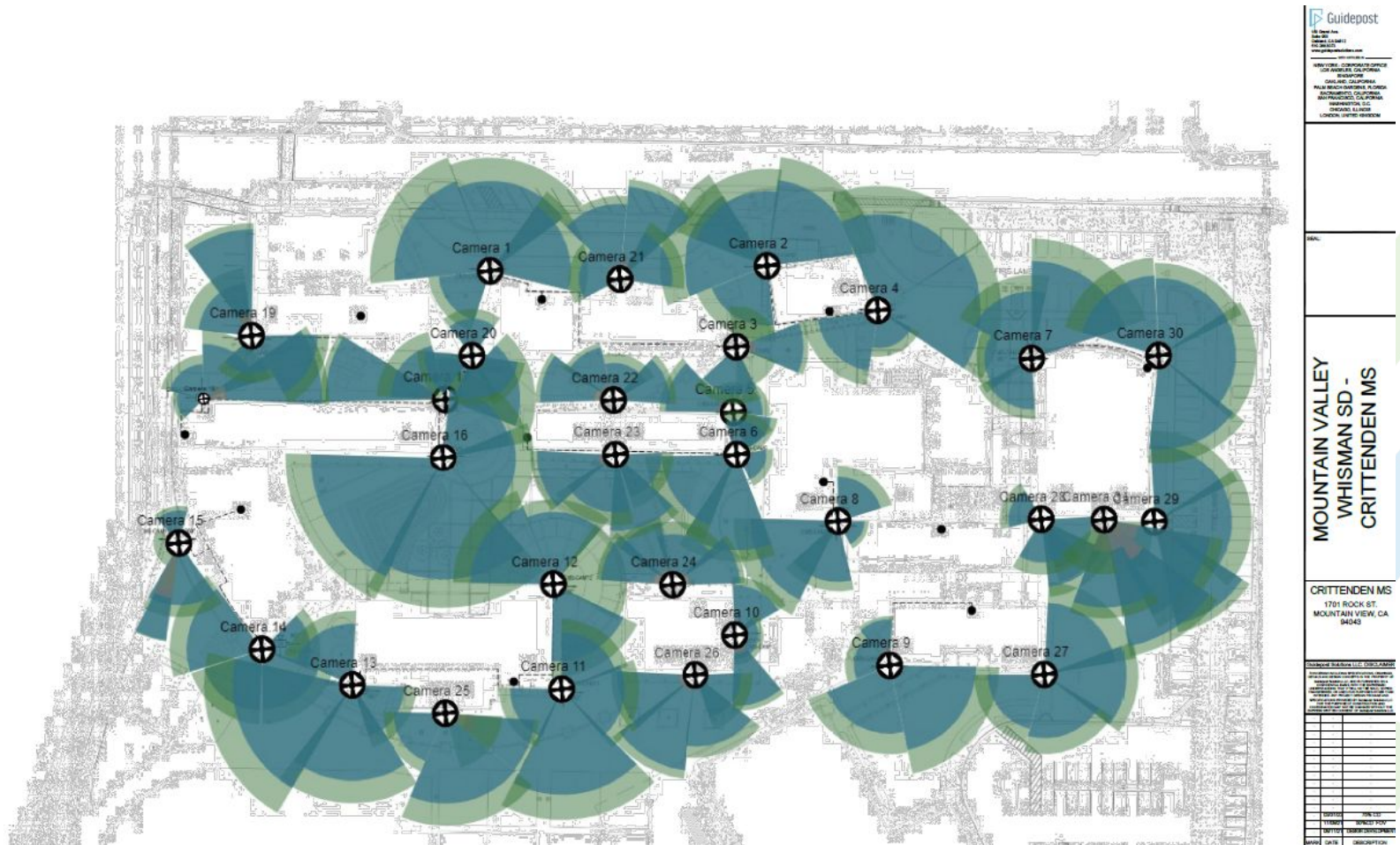
U.S.A. Program Set: 2021+37+2
U.S.A. Relongs: 2021+39+57
U.S.A. Backcheck Relongs: 2021+12+51
U.S.A. Backcheck Relongs: 2022+31+57

Crittenden Middle School
Site Plan

AC1.1

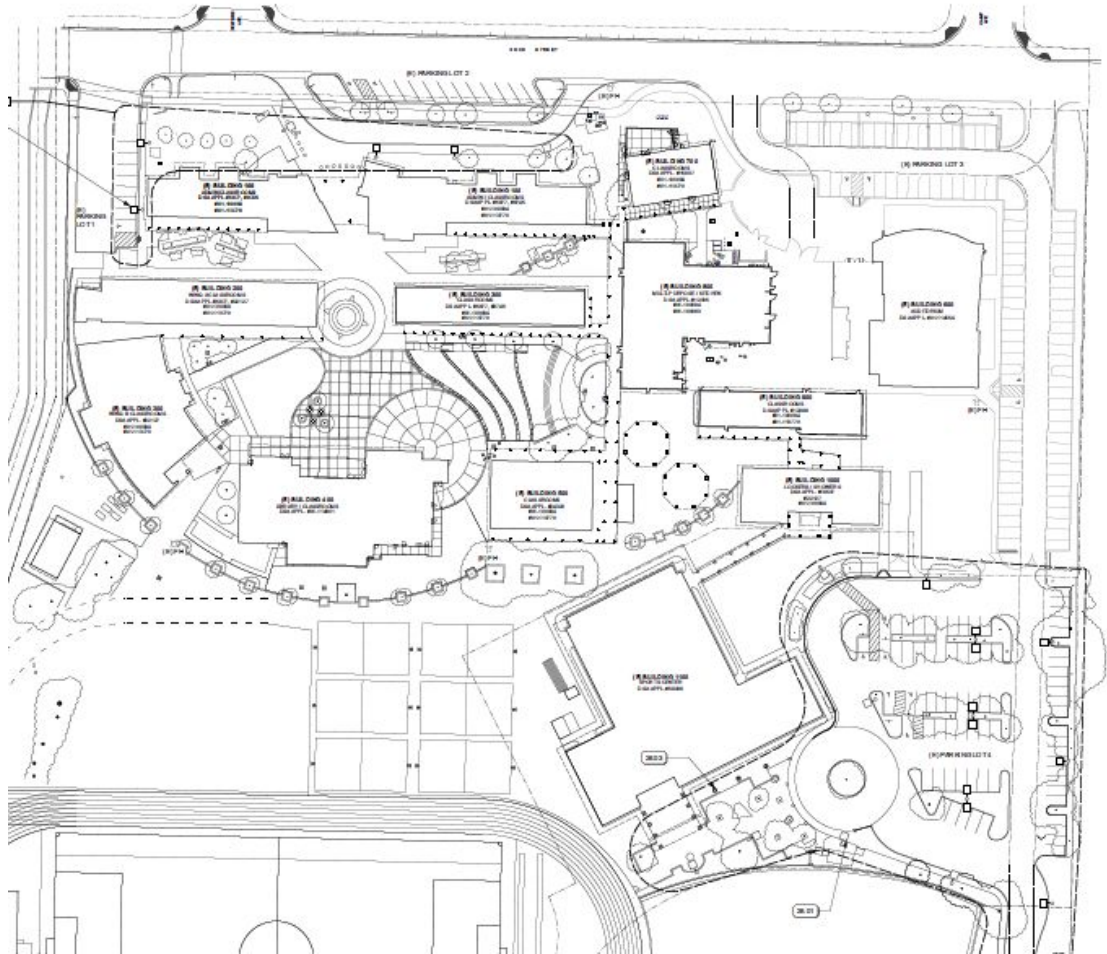
202-

Crittenden Surveillance Camera Project





Mountain View Whisman School District

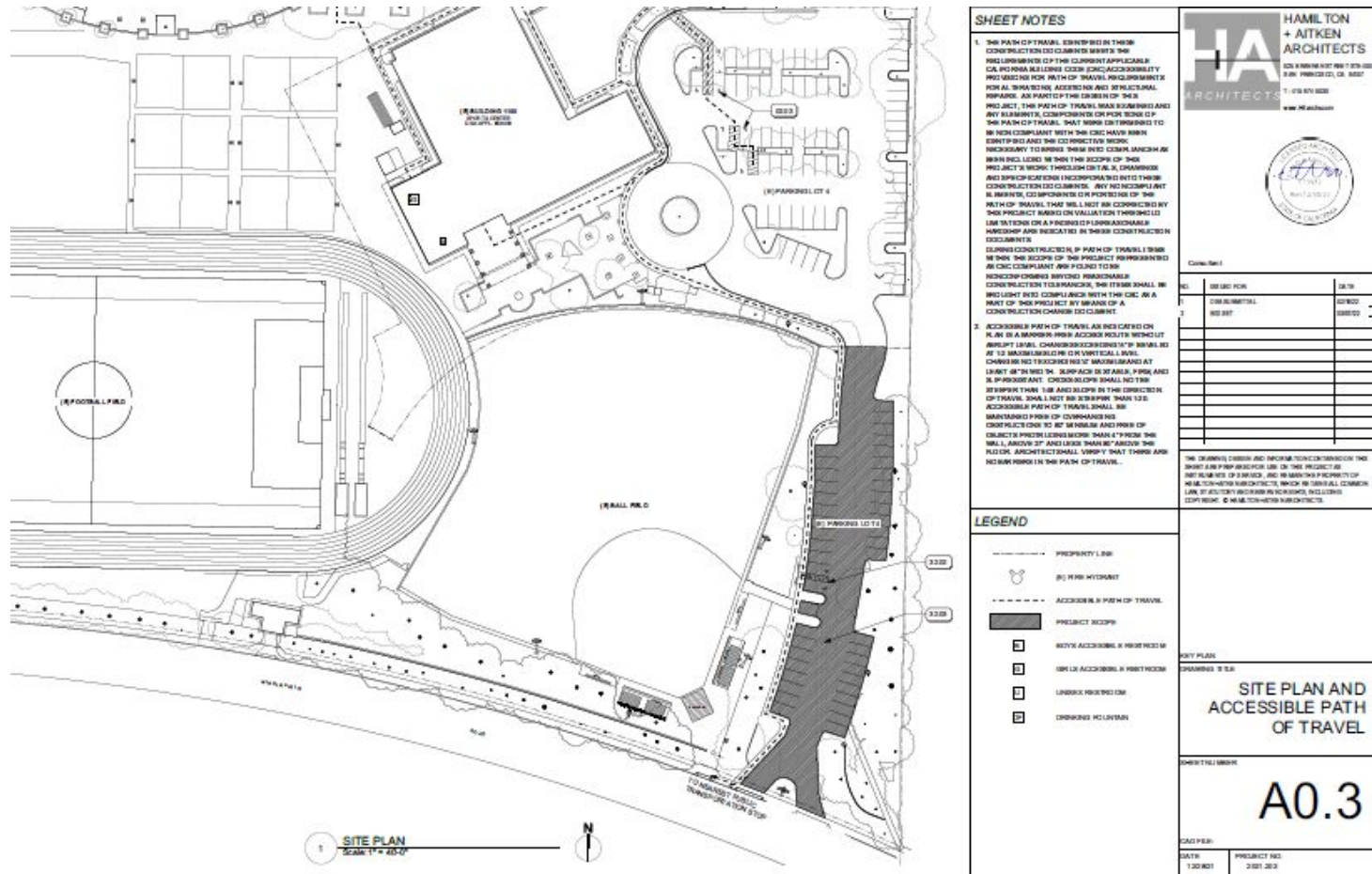
Crittenden Site Lighting Project



KEYNOTES	
KEY	NOTE
100	100' RADIUS (10' RADIUS) (10' RADIUS)
101	101' RADIUS (10' RADIUS) (10' RADIUS)
102	102' RADIUS (10' RADIUS) (10' RADIUS)

SHEET NOTES	
CRITTENDEN MIDDLE SCHOOL	
SITE LIGHTING	
1701 ROCK ST. MOUNTAIN VIEW, CA 94043	
MOUNTAIN VIEW WHISMAN SCHOOL DISTRICT	
1400 MONTECITO AVE. MOUNTAIN VIEW, CA 94043 (800) 528-3500	
 HAMILTON + AIKEN ARCHITECTS 225 S. BROADWAY, SUITE 100, SAN ANTONIO, TEXAS 78205 TEL: 214.591.1000 WWW.HAARCHITECTS.COM	
	
CONSTRUCTION	
NO.	DATE
1.	10/10/2018
2.	10/10/2018
3.	10/10/2018
4.	10/10/2018
5.	10/10/2018
6.	10/10/2018
7.	10/10/2018
8.	10/10/2018
9.	10/10/2018
10.	10/10/2018

Crittenden Paving Project



Graham Middle School

Access Control Project

- Work will include installation of card readers and associated equipment for electronic access of classrooms and office spaces.
- Planned to begin in July 2021 and be completed by January 2023. Work to install equipment will take place during normal business hours during summer of 2022 and move to after hours work once classes resume in August.

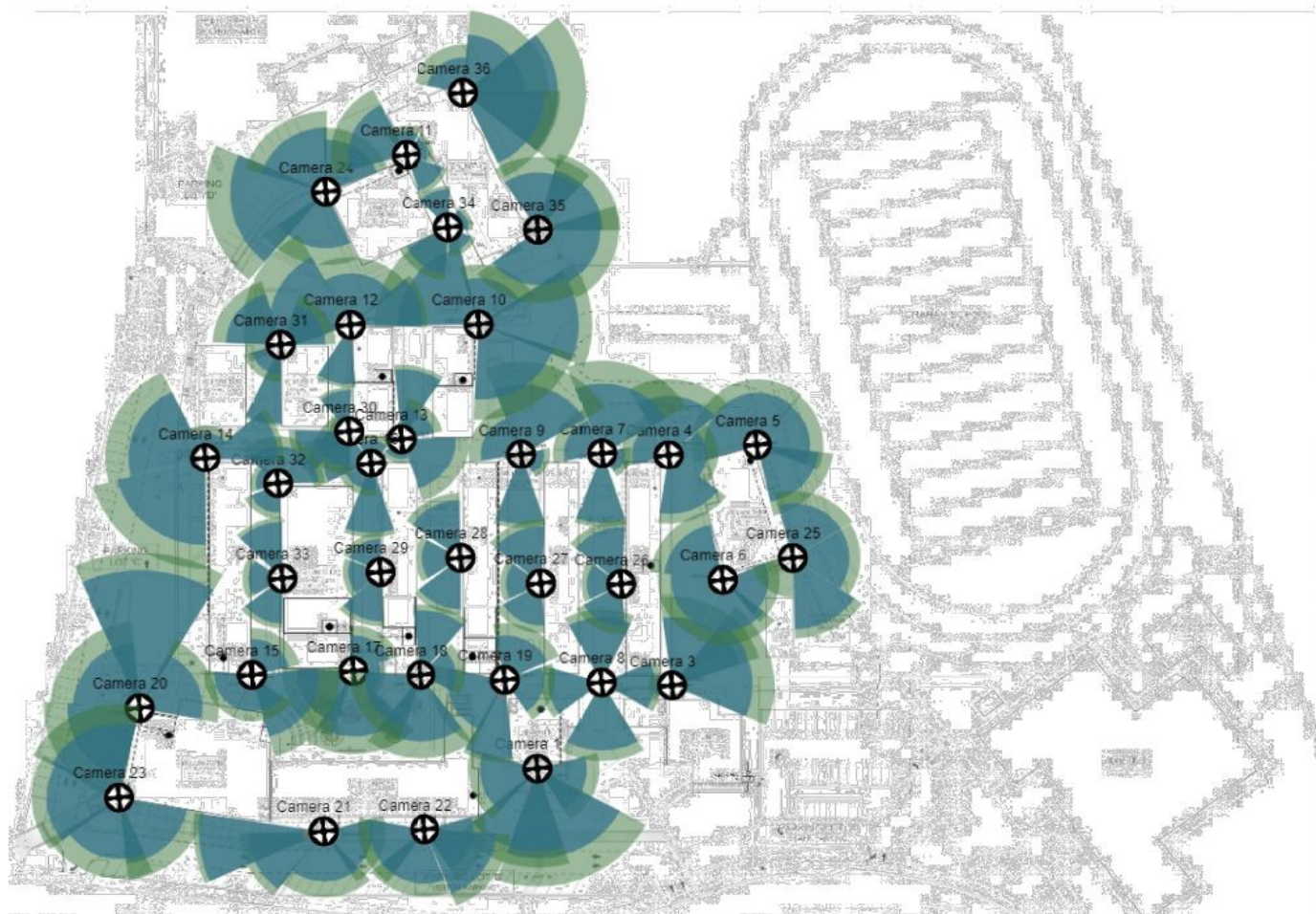
Surveillance Camera Project

- Scope of work includes installation of surveillance cameras and associated equipment in accordance with the Board approved camera policy.
- Construction is scheduled for June 2022 to September 2022.

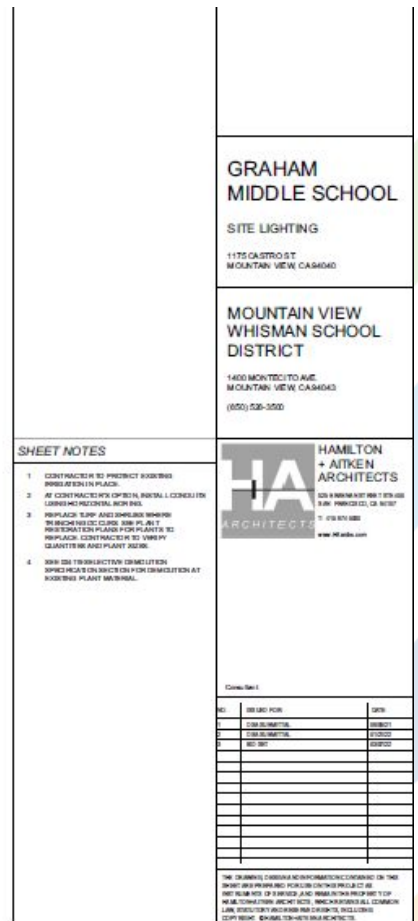
Site Lighting

- Scope of work includes installation of site lighting to illuminate path of travel from parking and entry points to classrooms and offices.
- Construction scheduled for June 2022 to August 2022.

Mountain View Whisman School District

[illegible]

Mountain View Whisman School District



Imai Elementary School

Portable Project

- Includes purchase and installation of one (1) 30'x32' classroom portable and associated sitework.
- Scheduled for June 2022 to August 2022.

Access Control Project

- Work will include installation of card readers and associated equipment for electronic access of classrooms and office spaces.
- Planned to begin in July 2021 and be completed by January 2023. Work to install equipment will take place during normal business hours during summer of 2022 and move to after hours work once classes resume in August.

Surveillance Camera Project

- Scope of work includes installation of surveillance cameras and associated equipment in accordance with the Board approved camera policy.
- Construction is scheduled for June 2022 to September 2022.

Imai (cont'd)

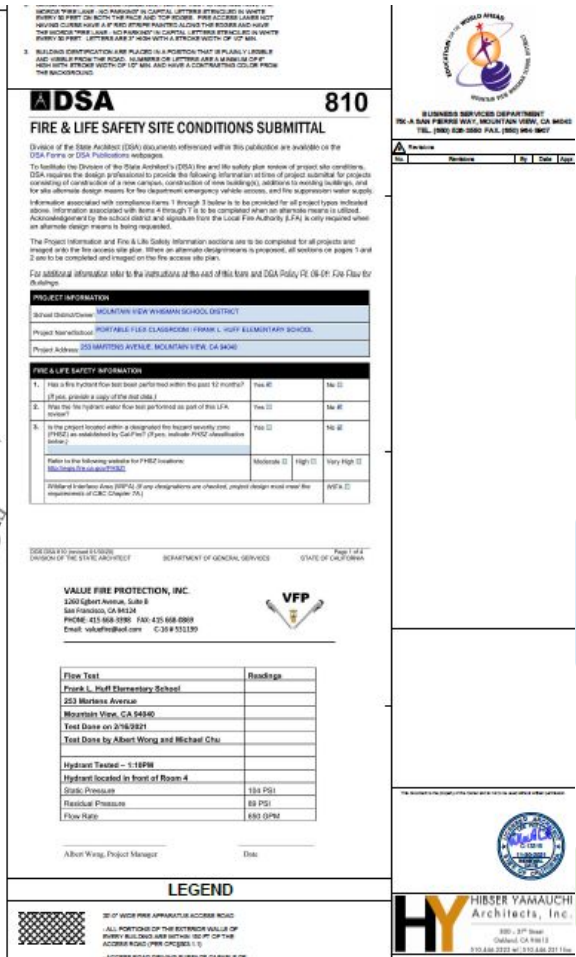
Site Lighting

- Scope of work includes installation of site lighting to illuminate path of travel from parking and entry points to classrooms and offices.
- Construction scheduled for June 2022 to August 2022.

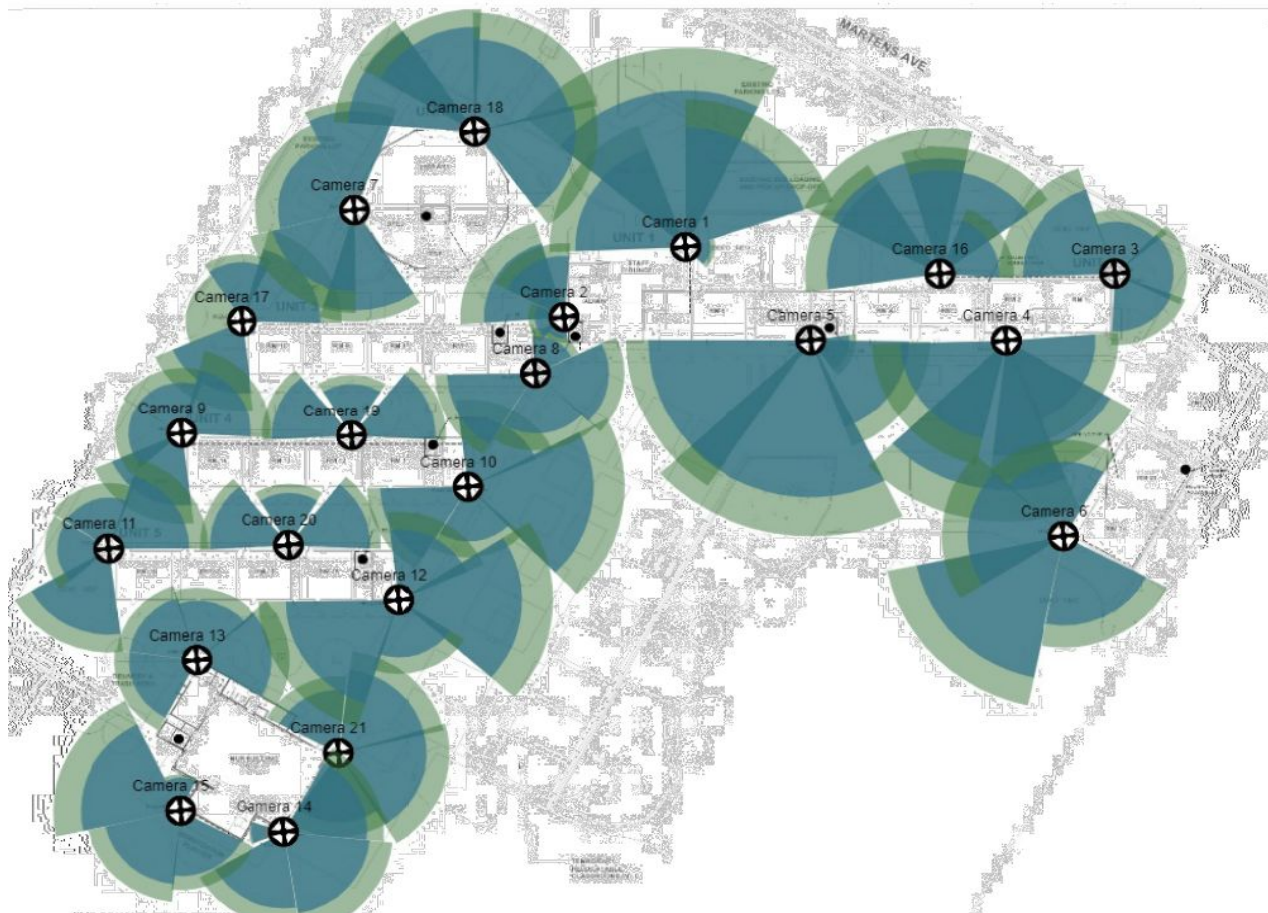
Paving Project

- Onsite work scheduled to begin in June and will include resurfacing and restriping of existing blacktop play space and seal coat of existing asphalt between classroom wings.

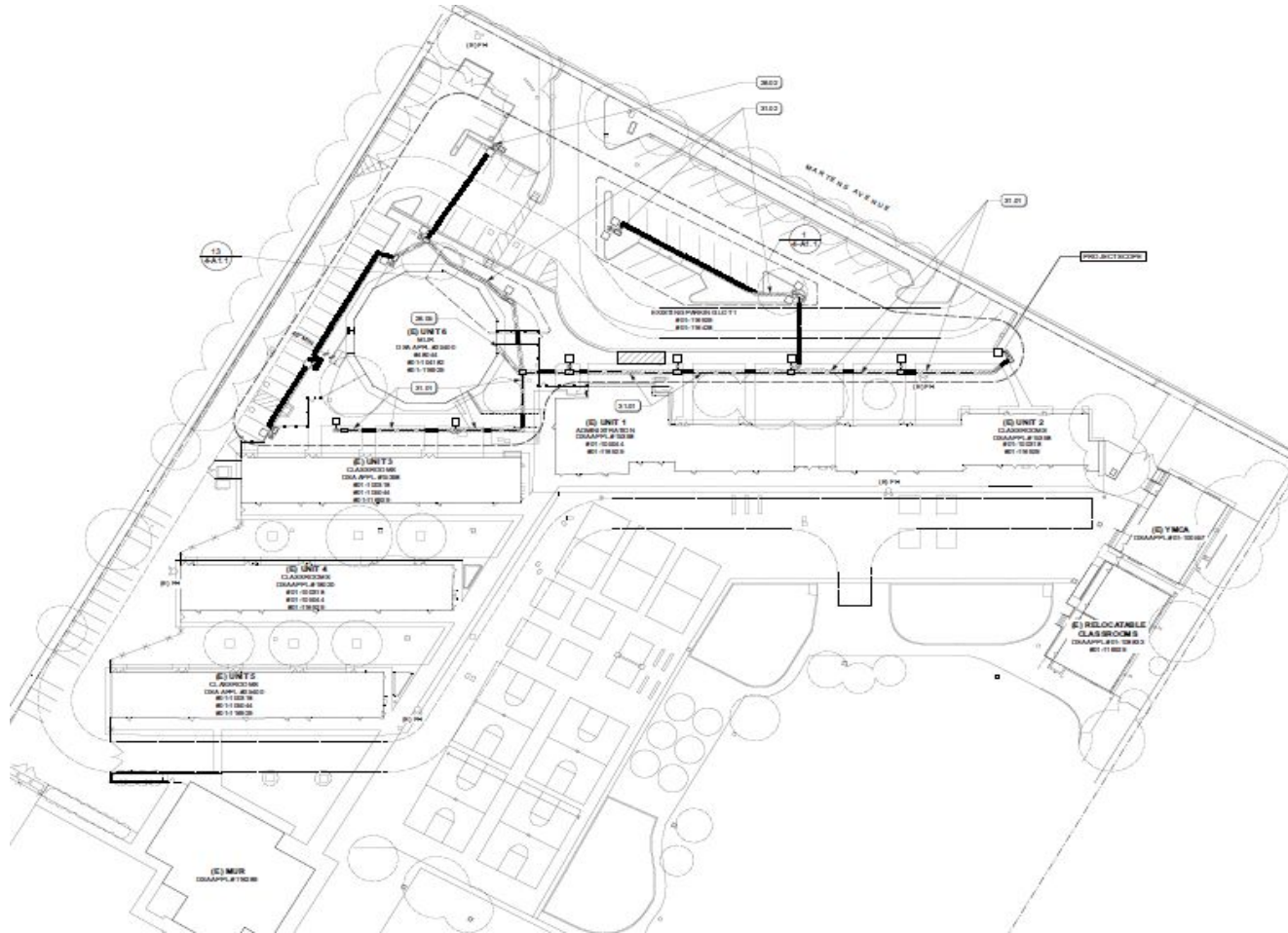
Mountain View Whisman School District



Imai Surveillance Camera Project



Guidepost 1800 Ave Suite 200 San Jose, CA 95128 (408) 253-1234 www.guidepost.com	
PROJECT: CAMERAS CLIENT: MOUNTAIN VIEW WHISMAN SCHOOL DISTRICT ADDRESS: 253 MARTENS AVE CITY: MOUNTAIN VIEW, CA COUNTY: SANTA CLARA ZIP: 94035	
DATE: 03/01/2022 TIME: 10:00 AM DRAWN BY: JPS CHECKED BY: JPS SHEET TITLE: MOUNTAIN VIEW WHISMAN SCHOOL DISTRICT	



Mountain View Whisman School District



Landels Elementary School

Access Control Project

- Work will include installation of card readers and associated equipment for electronic access of classrooms and office spaces.
- Planned to begin in July 2021 and be completed by January 2023. Work to install equipment will take place during normal business hours during summer of 2022 and move to after hours work once classes resume in August.

Surveillance Camera Project

- Scope of work includes installation of surveillance cameras and associated equipment in accordance with the Board approved camera policy.
- Construction is scheduled for June 2022 to September 2022.

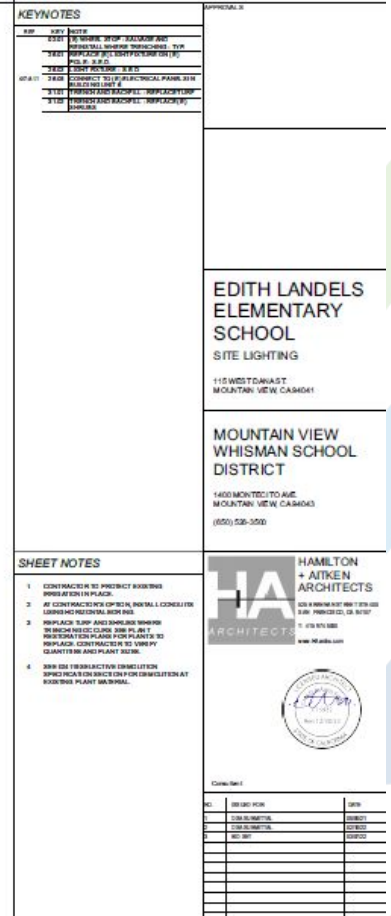
Site Lighting

- Scope of work includes installation of site lighting to illuminate path of travel from parking and entry points to classrooms and offices.
- Construction scheduled for June 2022 to August 2022.

Mountain View Whisman School District



Mountain View Whisman School District



Mistral Elementary School

Access Control Project

- Work will include installation of card readers and associated equipment for electronic access of classrooms and office spaces.
- Planned to begin in July 2021 and be completed by January 2023. Work to install equipment will take place during normal business hours during summer of 2022 and move to after hours work once classes resume in August.

Surveillance Camera Project

- Scope of work includes installation of surveillance cameras and associated equipment in accordance with the Board approved camera policy.
- Construction is scheduled for June 2022 to September 2022.

Site Lighting

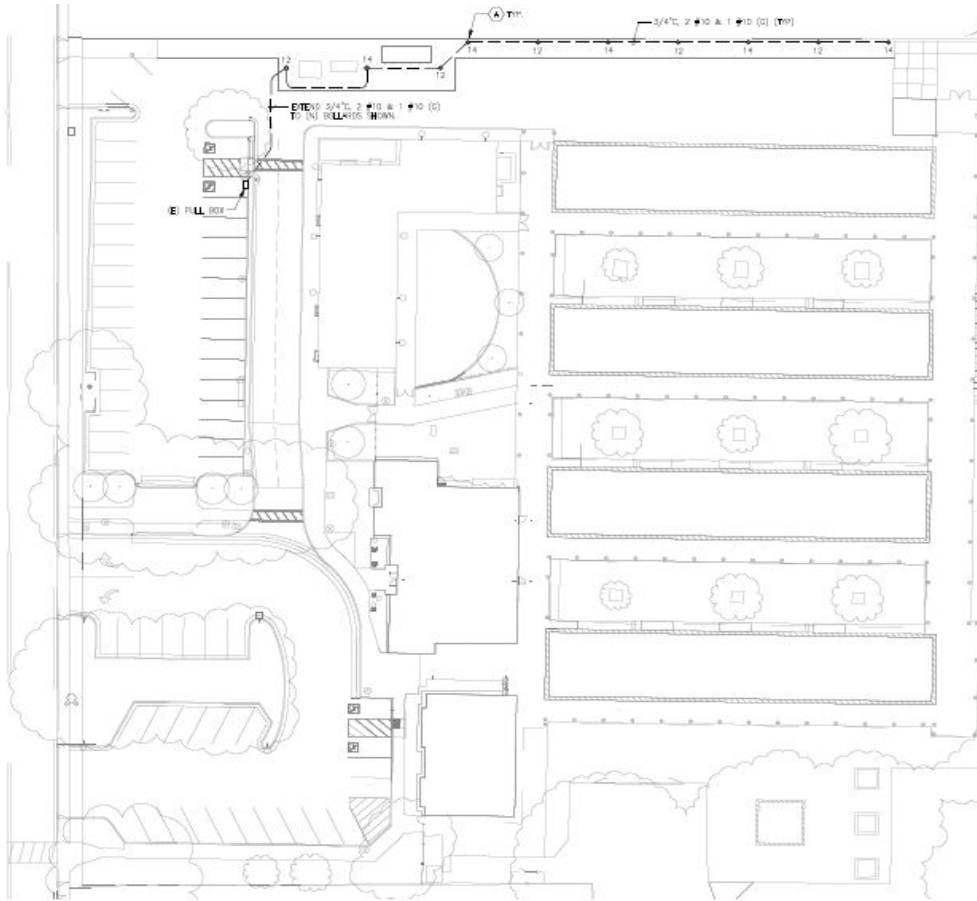
- Scope of work includes installation of site lighting to illuminate path of travel from parking and entry points to classrooms and offices.
- Construction scheduled for June 2022 to August 2022.

Mistral Surveillance Camera Project



Mountain View Whisman School District

Mistral Site Lighting Project



GABRIELA MISTRAL ES SITE LIGHTING 905 ESCUELA AVE. MOUNTAIN VIEW, CA 94041		
MOUNTAIN VIEW WHISMAN SCHOOL DISTRICT 1400 MONTECITO AVE. MOUNTAIN VIEW, CA 94043 (925) 526-3500		
HA HAMILTON + AITKEN ARCHITECTS 224 BROADWAY STREET STE 400 SAN FRANCISCO, CA 94107 T 415 474 8300 www.hamiltonaitken.com		
 Allison Engineering Corporation, Inc. 1000 10TH AVENUE, 4th FL SAN FRANCISCO, CA 94133 PROJECT NO. 135-01-01-5 CONSULTANT		
NO.	REVISION FOR	DATE
001	SUBMITTAL	09/04/2021
002	ARCH CHECK SUBMITTAL	09/04/2021
003	REVISION	09/04/2021
THE DRAWING, DESIGN AND INFORMATION CONTAINED ON THIS SHEET ARE PREPARED FOR AND ON BEHALF OF THE PROJECT AS REPRESENTATIVE OF SERVICES, AND REMAIN THE PROPERTY OF HAMILTON + AITKEN ARCHITECTS, HAMILTON + AITKEN ARCHITECTS, LAW, STATUTORY AND REGULATORY RIGHTS, INC. (HAS)		
KEY PLAN		

Monta Loma Elementary School

Solar Project

- Scope of work includes installation of rooftop and ground mounted solar arrays, one (1) EV charging station with 2 ports and associated equipment.
- Onsite work scheduled to begin in June 2022 and run through December 2022.

HVAC Upgrades

- Replacement of existing HVAC units in classrooms and administration building.
- Scheduled for June 2022 to August 2022.

Monta Loma (cont'd)

Access Control Project

- Work will include installation of card readers and associated equipment for electronic access of classrooms and office spaces.
- Planned to begin in July 2021 and be completed by January 2023. Work to install equipment will take place during normal business hours during summer of 2022 and move to after hours work once classes resume in August.

Surveillance Camera Project

- Scope of work includes installation of surveillance cameras and associated equipment in accordance with the Board approved camera policy.
- Construction is scheduled for June 2022 to September 2022.

Site Lighting

- Scope of work includes installation of site lighting to illuminate path of travel from parking and entry points to classrooms and offices.
- Construction scheduled for June 2022 to August 2022.

Monta Loma Solar Project



PROJECT SUMMARY

SOLAR MODULE: LG450N2H-E1 (450W)
 YEAR: POWER/STRING: 450W x 18 PANELS = 8.1KW

PROJECT PARAMETERS

ARRAY	PANELS	STRINGS	POWER (KW)
R1	90	5	40.50
R2	72	4	32.40
R3	180	9	72.90
TOTAL	324	18	145.80

SYSTEM 1 SUMMARY

PROJECT LOCATION	MONTA LOMA ES 400 THOMPSON AVE. MOUNTAIN VIEW, CA 94040
MIN DESIGN TEMPERATURE	0°C
MAX 2% DESIGN TEMPERATURE	20°C
PV MODULE	LG450N2H-E1
PV MODULE WATTAGE @ STC	450
PV MODULE COUNT	180
DC SYSTEM SIZE	72.9 KW/DC
AC SYSTEM SIZE	80 KW/80 KVA
INVERTER TYPE & COUNT	(1) CPS SCANDITL-0005480 (80 KVA)

SYSTEM 2 SUMMARY

PROJECT LOCATION	MONTA LOMA ES 400 THOMPSON AVE. MOUNTAIN VIEW, CA 94040
MIN DESIGN TEMPERATURE	0°C
MAX 2% DESIGN TEMPERATURE	20°C
PV MODULE	LG450N2H-E1
PV MODULE WATTAGE @ STC	450
PV MODULE COUNT	180
DC SYSTEM SIZE	72.9 KW/DC
AC SYSTEM SIZE	80 KW/80 KVA
INVERTER TYPE & COUNT	(1) CPS SCANDITL-0005480 (80 KVA)



PROJECT LOCATION

MONTA LOMA
 ELEMENTARY SCHOOL
 400 THOMPSON AVE.
 MOUNTAIN VIEW, CA 94043

ENGINEER



100 120 ST. SUITE 300
 OAKLAND, CA 94612
 TEL: 415-738-8110

CONSULTANT



1101 MARIN VILLAGE PARKWAY # 100
 ALAMEDA, CA 94601 TEL: 925.821.3773

ENGINEER (STAMP)



ISSUE

DATE	BY	FOR	REVISION
05/06/2021	ENG	FOR	1.0
05/06/2021	ENG	FOR	1.1
05/06/2021	ENG	FOR	1.2
05/06/2021	ENG	FOR	1.3
05/06/2021	ENG	FOR	1.4
05/06/2021	ENG	FOR	1.5
05/06/2021	ENG	FOR	1.6
05/06/2021	ENG	FOR	1.7
05/06/2021	ENG	FOR	1.8
05/06/2021	ENG	FOR	1.9
05/06/2021	ENG	FOR	1.10
05/06/2021	ENG	FOR	1.11
05/06/2021	ENG	FOR	1.12
05/06/2021	ENG	FOR	1.13
05/06/2021	ENG	FOR	1.14
05/06/2021	ENG	FOR	1.15
05/06/2021	ENG	FOR	1.16
05/06/2021	ENG	FOR	1.17
05/06/2021	ENG	FOR	1.18
05/06/2021	ENG	FOR	1.19
05/06/2021	ENG	FOR	1.20

REVISIONS

DATE	BY	FOR	REVISION
05/06/2021	ENG	FOR	1.0
05/06/2021	ENG	FOR	1.1
05/06/2021	ENG	FOR	1.2
05/06/2021	ENG	FOR	1.3
05/06/2021	ENG	FOR	1.4
05/06/2021	ENG	FOR	1.5
05/06/2021	ENG	FOR	1.6
05/06/2021	ENG	FOR	1.7
05/06/2021	ENG	FOR	1.8
05/06/2021	ENG	FOR	1.9
05/06/2021	ENG	FOR	1.10
05/06/2021	ENG	FOR	1.11
05/06/2021	ENG	FOR	1.12
05/06/2021	ENG	FOR	1.13
05/06/2021	ENG	FOR	1.14
05/06/2021	ENG	FOR	1.15
05/06/2021	ENG	FOR	1.16
05/06/2021	ENG	FOR	1.17
05/06/2021	ENG	FOR	1.18
05/06/2021	ENG	FOR	1.19
05/06/2021	ENG	FOR	1.20

REVISIONS

DATE	BY	FOR	REVISION
05/06/2021	ENG	FOR	1.0
05/06/2021	ENG	FOR	1.1
05/06/2021	ENG	FOR	1.2
05/06/2021	ENG	FOR	1.3
05/06/2021	ENG	FOR	1.4
05/06/2021	ENG	FOR	1.5
05/06/2021	ENG	FOR	1.6
05/06/2021	ENG	FOR	1.7
05/06/2021	ENG	FOR	1.8
05/06/2021	ENG	FOR	1.9
05/06/2021	ENG	FOR	1.10
05/06/2021	ENG	FOR	1.11
05/06/2021	ENG	FOR	1.12
05/06/2021	ENG	FOR	1.13
05/06/2021	ENG	FOR	1.14
05/06/2021	ENG	FOR	1.15
05/06/2021	ENG	FOR	1.16
05/06/2021	ENG	FOR	1.17
05/06/2021	ENG	FOR	1.18
05/06/2021	ENG	FOR	1.19
05/06/2021	ENG	FOR	1.20

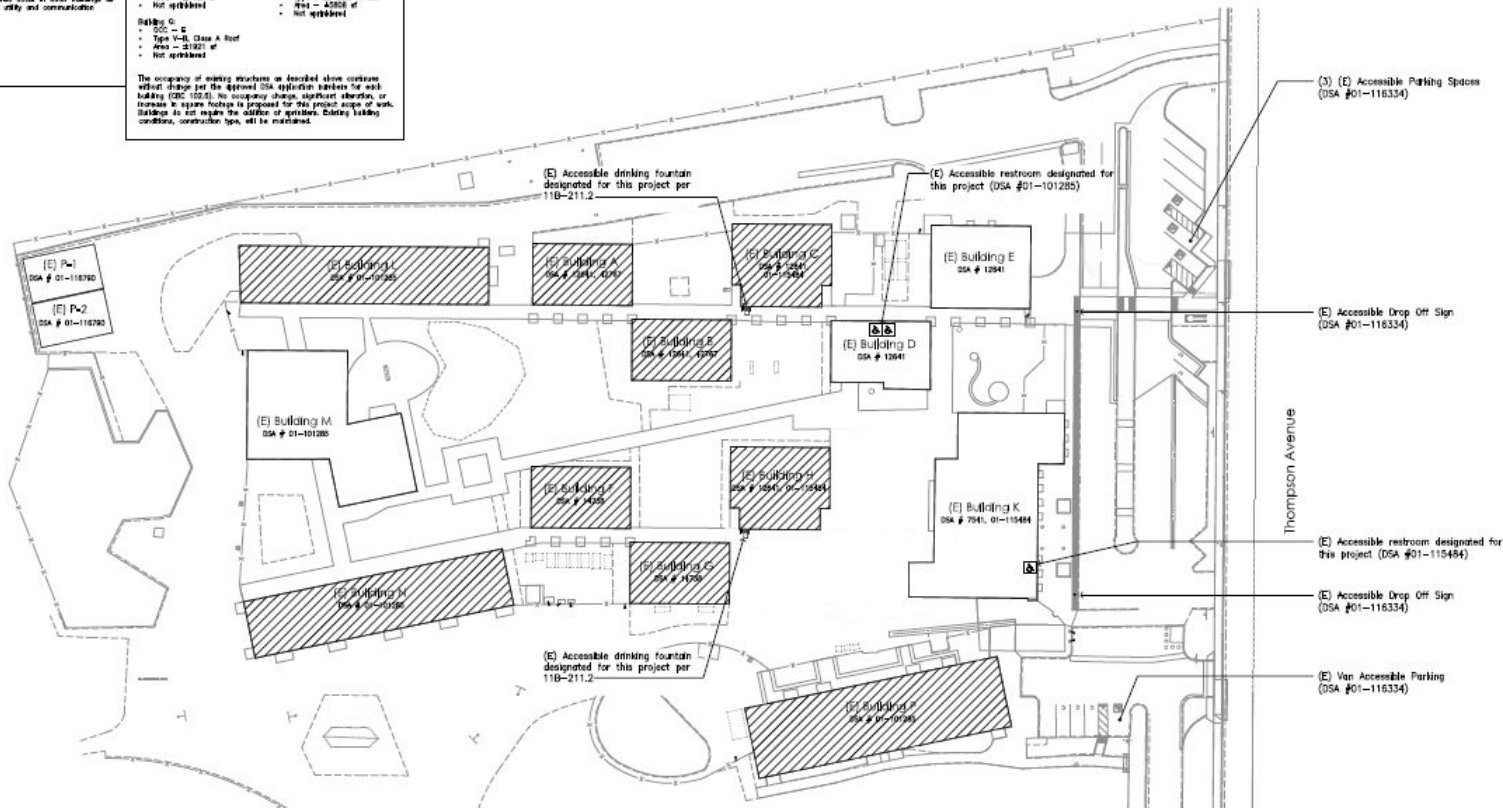
Monta Loma HVAC Upgrades

located on plan is at least 48 in wide, 6-inches. The maximum slope in the steeper than 1:20. Accessible path use of unobstructed clearances to 50" protruding more than 6" from the wall, use the floor. Architect shall verify that all of these.

indicate building included as part of this is may also occur in other buildings as complete ability and communication

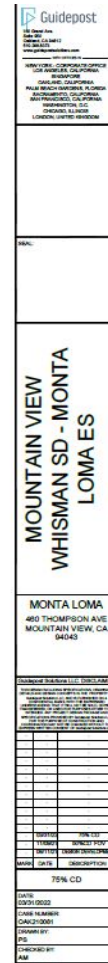
<p>Building C:</p> <ul style="list-style-type: none"> • Type V-B, Class A Roof • Area — 21,923 sf • Not sprinkled <p>Building D:</p> <ul style="list-style-type: none"> • Type V-B, Class A Roof • Area — 22,472 sf • Not sprinkled <p>Building E:</p> <ul style="list-style-type: none"> • Type V-B, Class A Roof • Area — 21,923 sf • Not sprinkled <p>Building F:</p> <ul style="list-style-type: none"> • Type V-B, Class A Roof • Area — 21,923 sf • Not sprinkled <p>Building G:</p> <ul style="list-style-type: none"> • Type V-B, Class A Roof • Area — 21,923 sf • Not sprinkled 	<p>Building H:</p> <ul style="list-style-type: none"> • Type V-B, Class A Roof • Area — 24,551 sf • Not sprinkled <p>Building I:</p> <ul style="list-style-type: none"> • Type V-B, Class A Roof • Area — 24,551 sf • Not sprinkled <p>Building J:</p> <ul style="list-style-type: none"> • Type V-B, Class A Roof • Area — 24,551 sf • Not sprinkled <p>Building K:</p> <ul style="list-style-type: none"> • Type V-B, Class A Roof • Area — 24,551 sf • Not sprinkled
--	---

The occupancy of existing structures as described above contains critical change per the approved DSA application numbers for each building (DSA 102.5). No occupancy change, significant alteration, or increase in square footage is proposed for this project scope of work. Buildings do not require the addition of sprinklers. Existing building conditions, construction type, will be maintained.



HVAC Modernization and Improvements
Monta Loma Elementary School
 443 Thompson Ave
 Mountain View, CA 94042

Mountain View Whisman School District



Mountain View Whisman School District



Stevenson Elementary School

Access Control Project

- Work will include installation of card readers and associated equipment for electronic access of classrooms and office spaces.
- Planned to begin in July 2021 and be completed by January 2023. Work to install equipment will take place during normal business hours during summer of 2022 and move to after hours work once classes resume in August.

Surveillance Camera Project

- Scope of work includes installation of surveillance cameras and associated equipment in accordance with the Board approved camera policy.
- Construction is scheduled for June 2022 to September 2022.

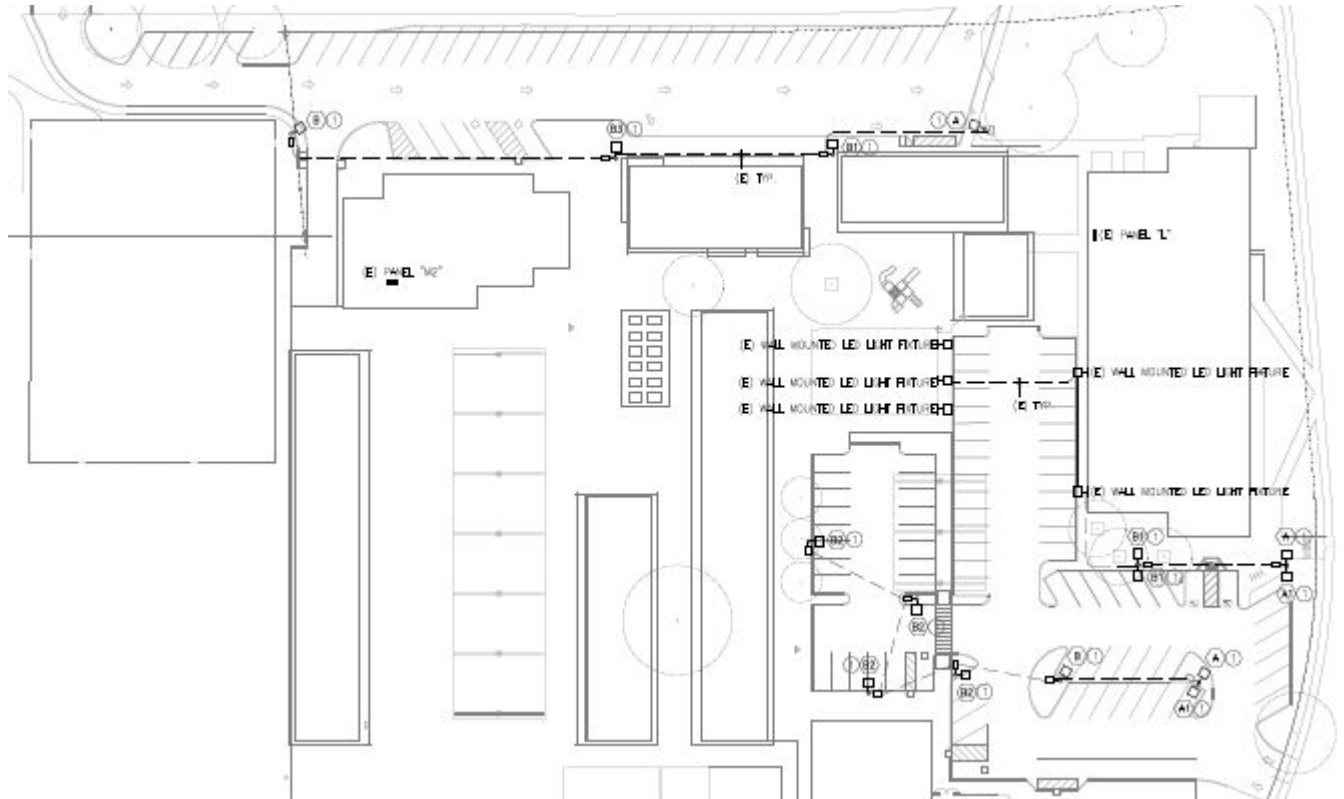
Site Lighting

- Scope of work includes installation of site lighting to illuminate path of travel from parking and entry points to classrooms and offices.
- Construction scheduled for June 2022 to August 2022.

Stevenson Surveillance Camera Project



Stevenson Site Lighting Project



Theuerkauf Elementary School

Solar Project

- Scope of work includes installation of rooftop and ground mounted solar arrays, one (1) EV charging station with 2 ports and associated equipment.
- Onsite work scheduled to begin in June 2022 and run through December 2022.

HVAC Upgrades

- Replacement of existing HVAC units in classrooms and administration building.
- Scheduled for June 2022 to August 2022.

Theuerkauf (cont'd)

Access Control Project

- Work will include installation of card readers and associated equipment for electronic access of classrooms and office spaces.
- Planned to begin in July 2021 and be completed by January 2023. Work to install equipment will take place during normal business hours during summer of 2022 and move to after hours work once classes resume in August.

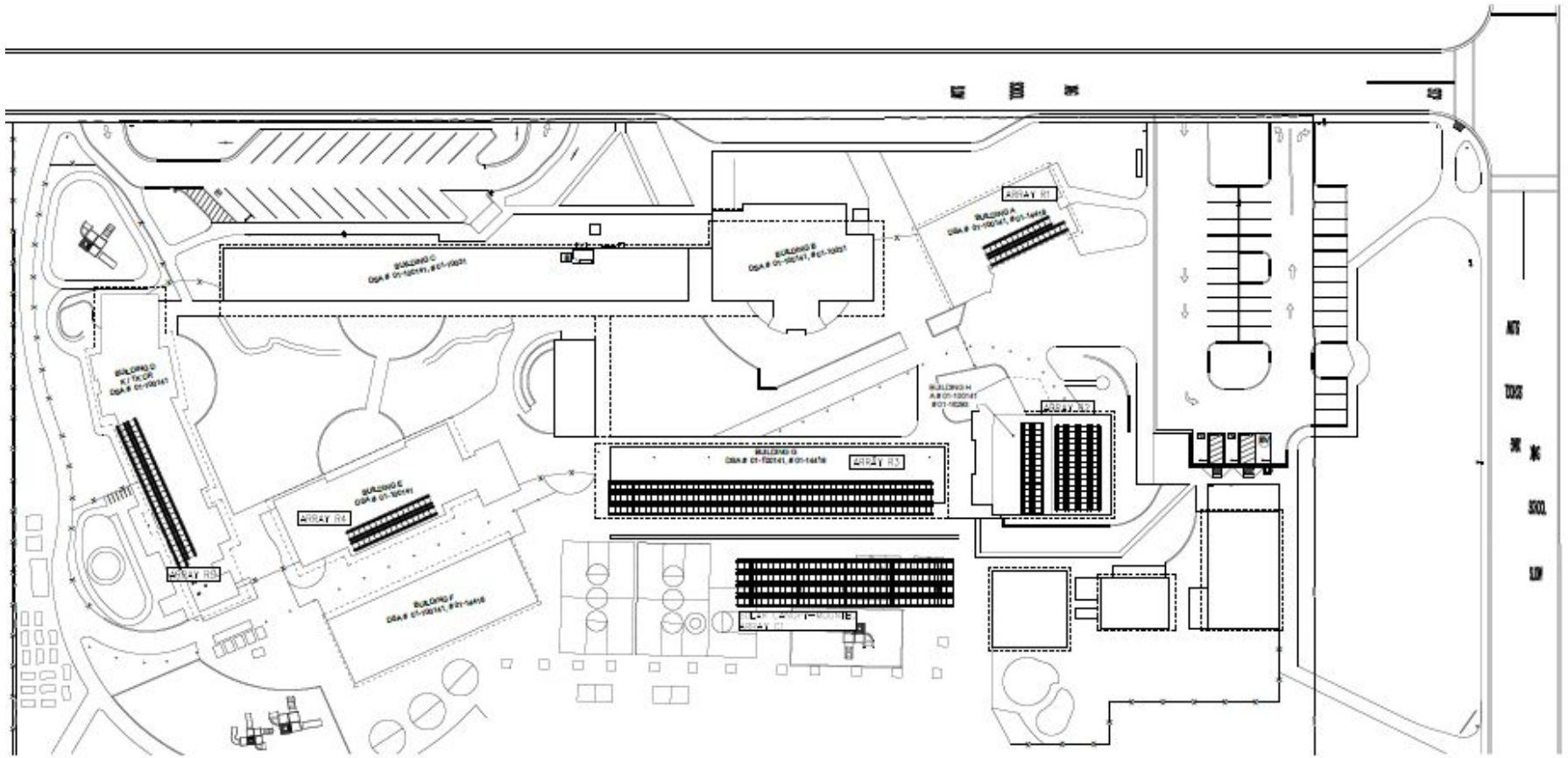
Surveillance Camera Project

- Scope of work includes installation of surveillance cameras and associated equipment in accordance with the Board approved camera policy.
- Construction is scheduled for June 2022 to September 2022.

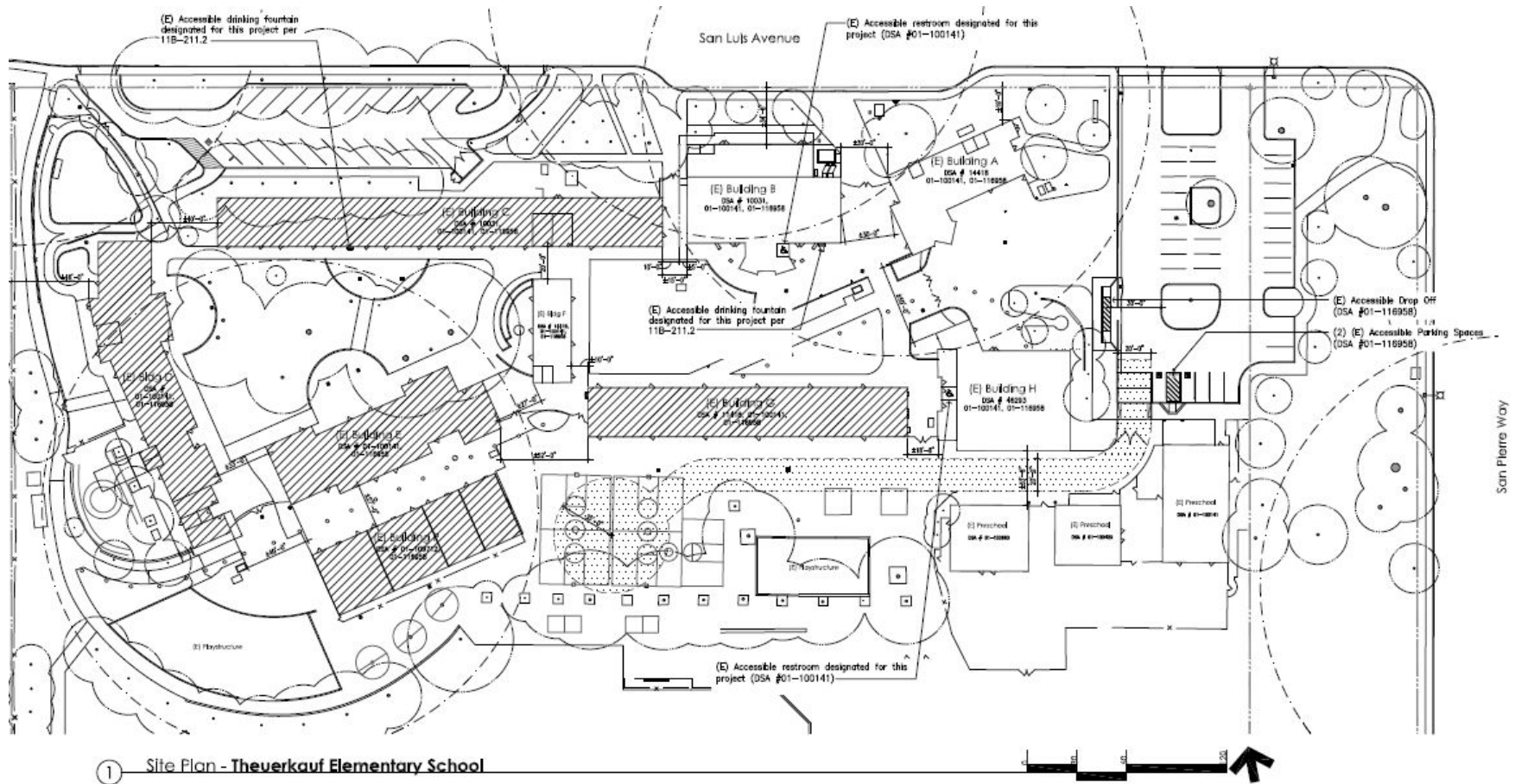
Site Lighting

- Scope of work includes installation of site lighting to illuminate path of travel from parking and entry points to classrooms and offices.
- Construction scheduled for June 2022 to August 2022.

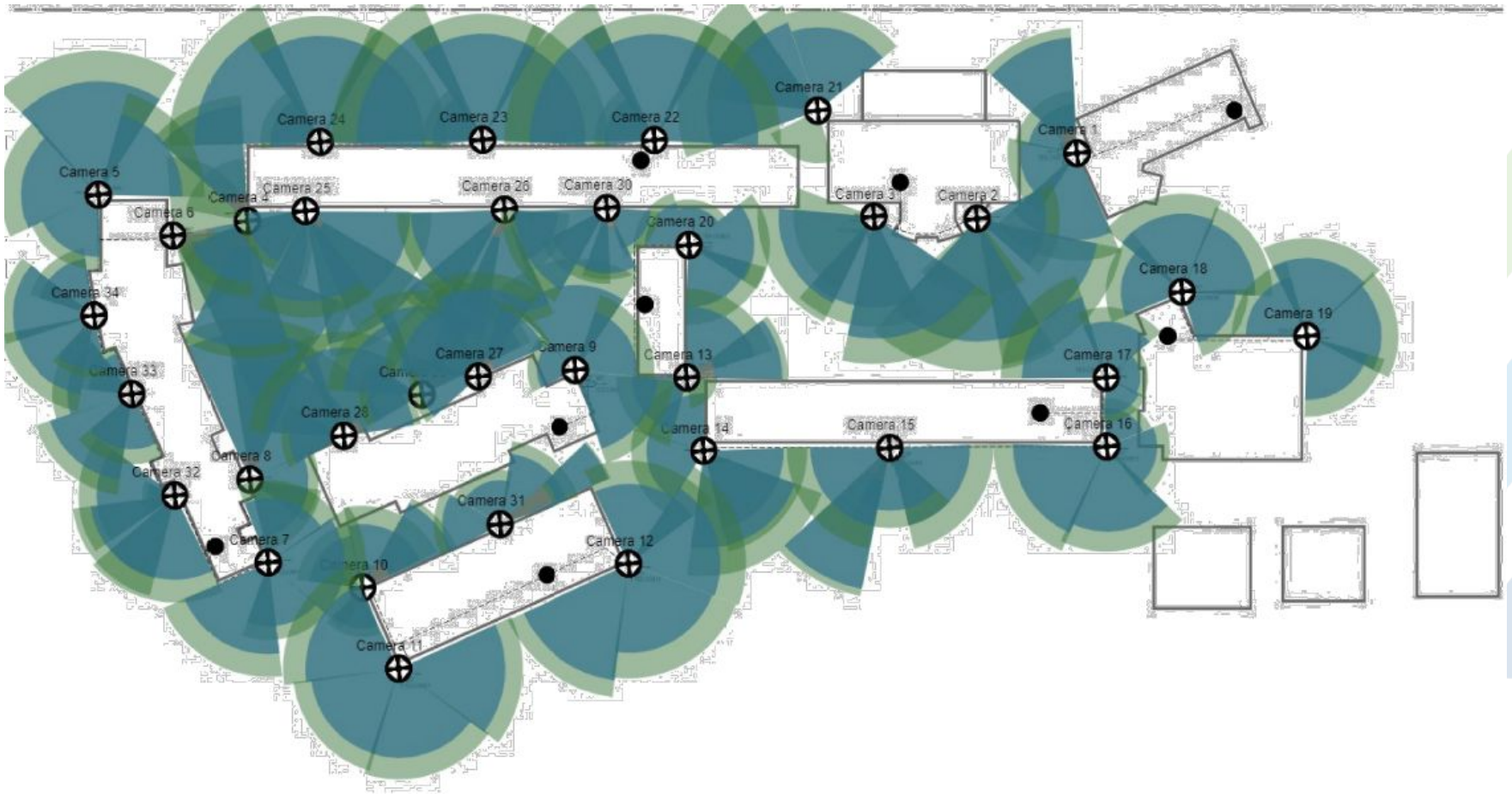
Theuerkauf Solar



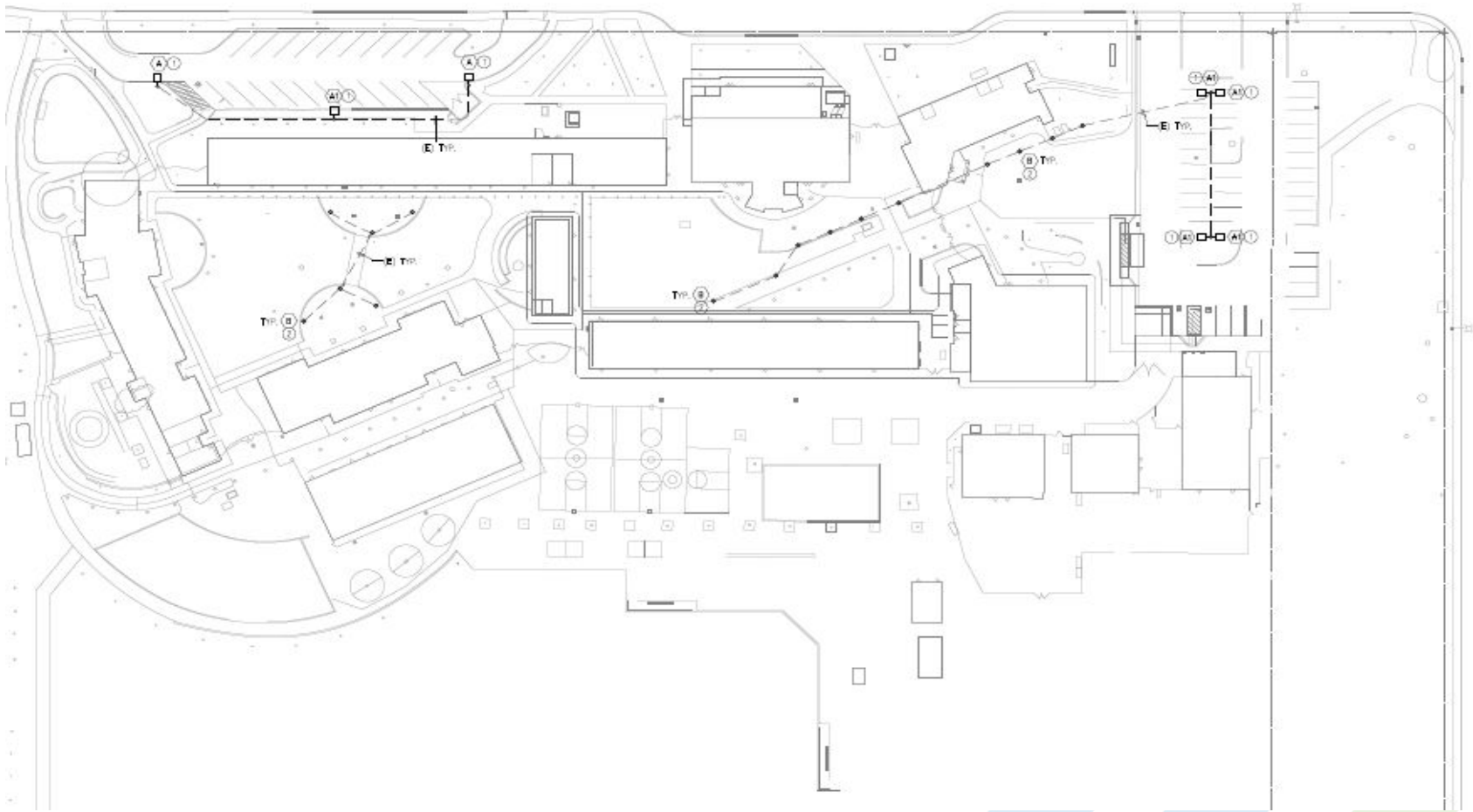
Theuerkauf HVAC Upgrades



Theuerkauf Surveillance Camera Project



Theuerkauf Site Lighting Project



Vargas Elementary School

Access Control Project

- Work will include installation of card readers and associated equipment for electronic access of classrooms and office spaces.
- Planned to begin in July 2021 and be completed by January 2023. Work to install equipment will take place during normal business hours during summer of 2022 and move to after hours work once classes resume in August.

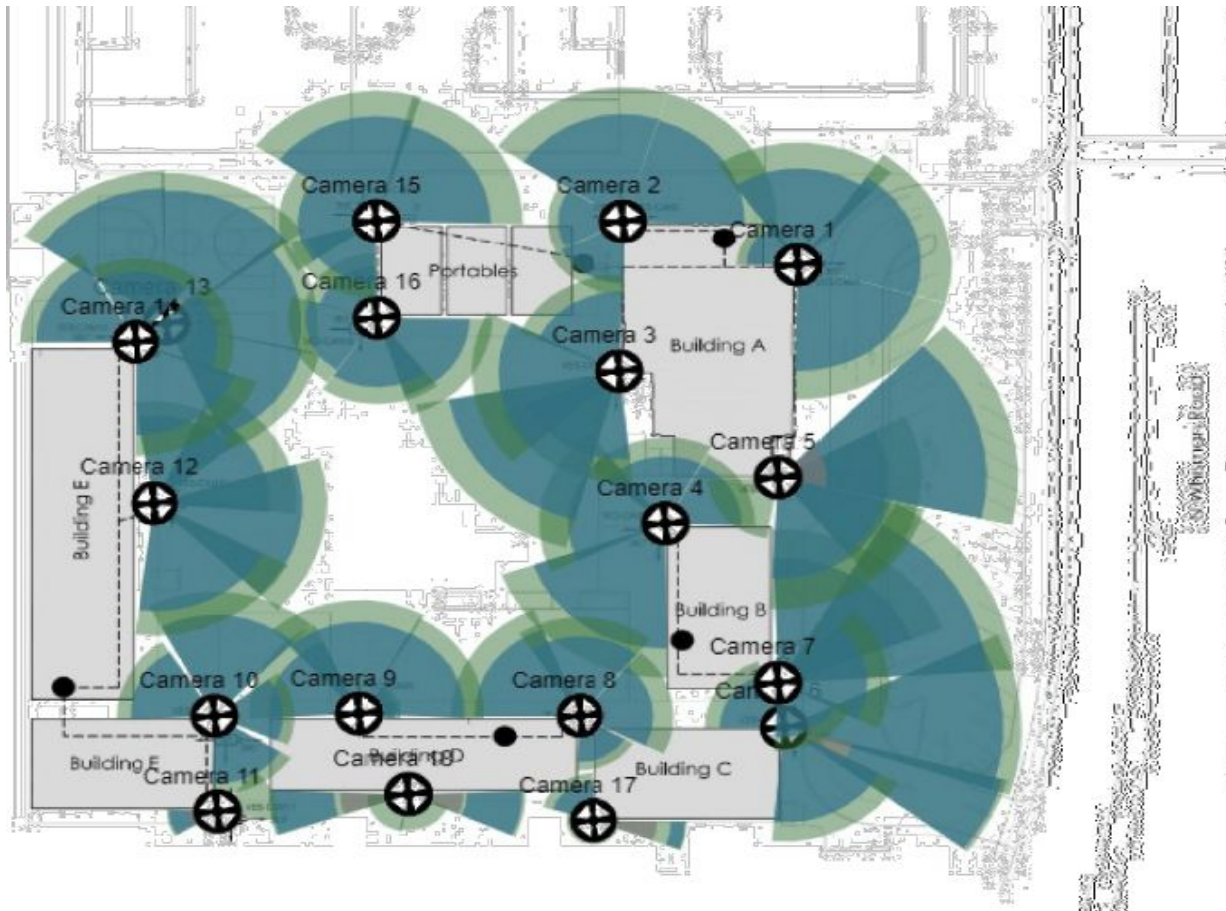
Surveillance Camera Project

- Scope of work includes installation of surveillance cameras and associated equipment in accordance with the Board approved camera policy.
- Construction is scheduled for June 2022 to September 2022.

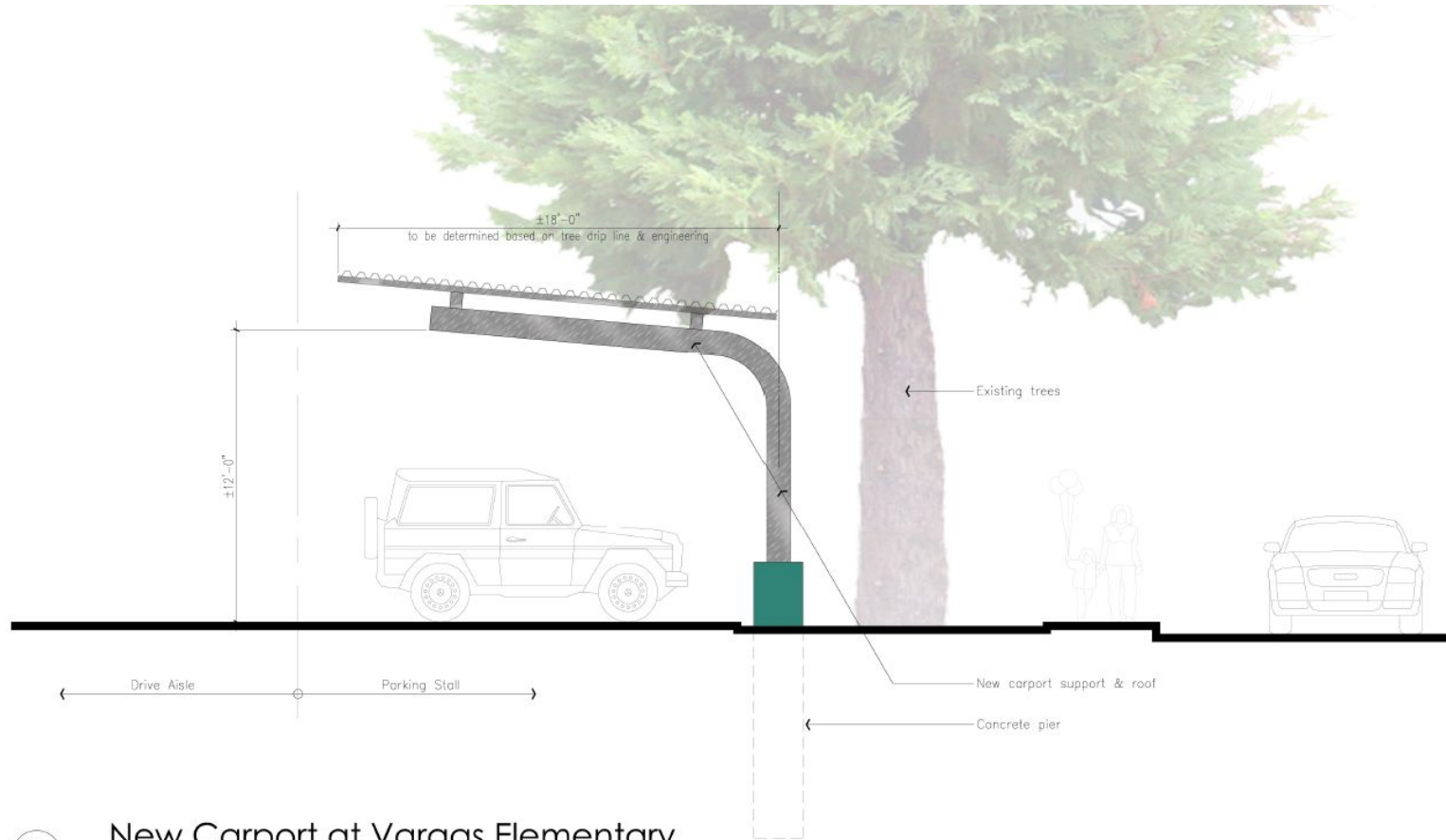
Parking Cover Project

- Includes installation of custom canopy parking cover to protect pedestrians and vehicles from falling debris from trees above parking area.
- Construction is scheduled for June 2022 to August 2022.

Vargas Surveillance Camera Project



Vargas Parking Cover



1 New Carport at Vargas Elementary

1/4" = 1'-0"

DTA Dreiling Terrones Architecture Inc.
Architecture | Infrastructure | Environments

District Office Building

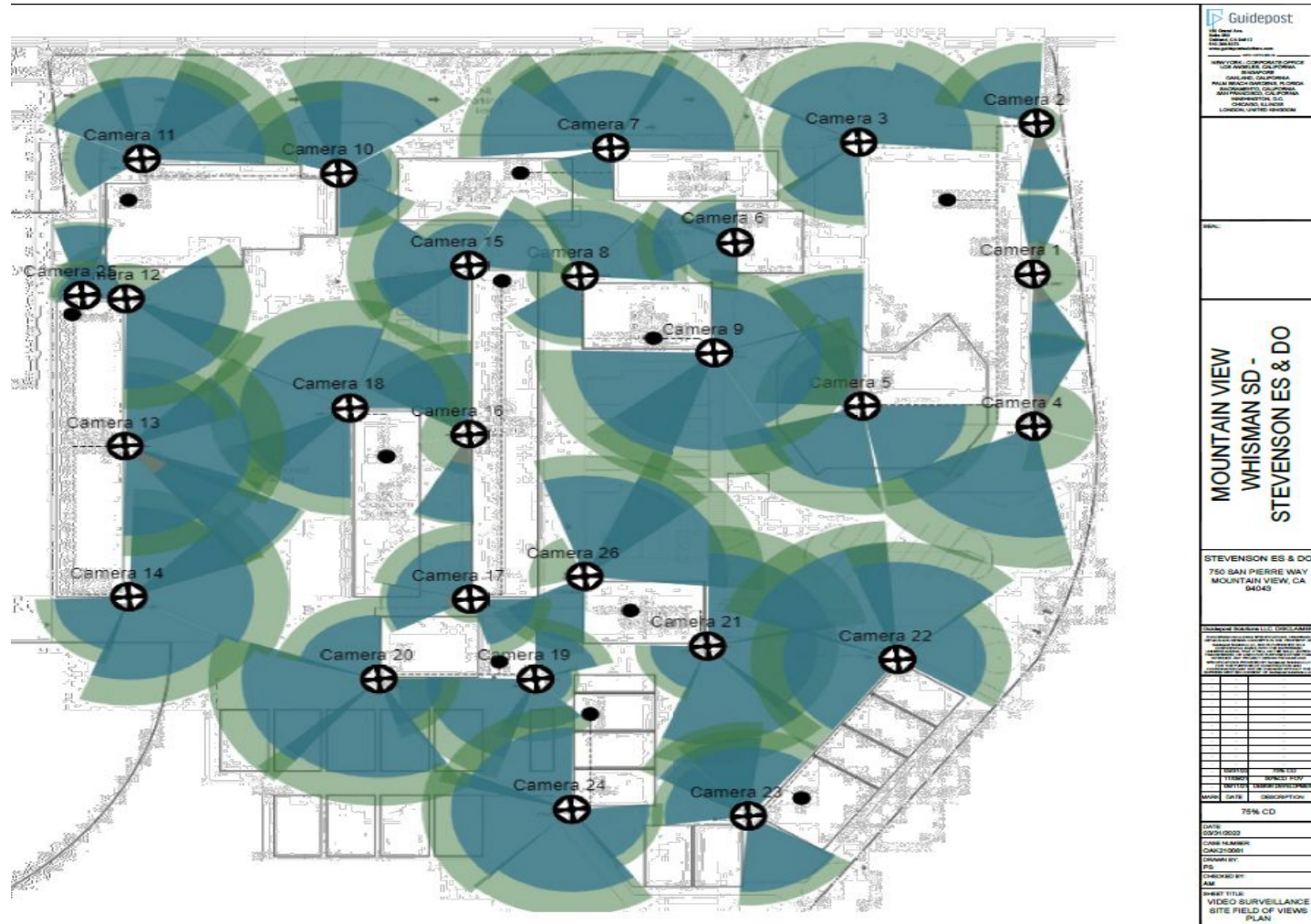
Access Control Project

- Work will include installation of card readers and associated equipment for electronic access of classrooms and office spaces.
- Planned to begin in July 2021 and be completed by January 2023. Work to install equipment will take place during normal business hours during summer of 2022 and move to after hours work once classes resume in August.

Surveillance Camera Project

- Scope of work includes installation of surveillance cameras and associated equipment in accordance with the Board approved camera policy.
- Construction is scheduled for June 2022 to September 2022.

District Office Surveillance Camera Project



Mountain View Whisman School District

Employee Housing Project

- Demolition of existing buildings is nearly complete.
- District and Developer are in negotiations on final construction contract amount and terms which will be brought to the Board of Trustees for approval.

Projects Projected to begin Construction in Fall 2022

- Storage Buildings at Stevenson and Vargas Elementary Schools
- Crittenden and Theuerkauf Electrical Upgrades
- Park Restroom Buildings at Castro, Imai and Landels Elementary Schools
- Window Replacement Project Phase 1 - Installation of operable windows at Castro Elementary, Stevenson Elementary School and the District Office. Work is planned for off hours
- HVAC Upgrades Phase 3 Project - Includes replacement of HVAC units at Library/SPED Buildings at Bubb, Imai and Landels Elementary Schools

Projects Currently in Design

- Window Replacement Project Phase 2
- Vargas Elementary School MUR Roll Up Door Project



Mountain View
Whisman
School District

Questions?