



Mountain View  
Whisman  
School District

# Road to Equitable Access to Choice Schools: *A Process and a Plan*

Mountain View Whisman School District



Mountain View  
Whisman  
School District

# Connections to our SP2027

# Connections to SP2027

- Goal Area #5: Equitable distribution of resources that support student success
  - Ensure facilities and resources equitably serve all students
- Goal Area #3: Inclusive and Supportive Culture
  - Expand stakeholders' access to the systems and strategies used to support student learning

# An Equity Challenge

Diminish the underrepresentation of our underserved student populations\* at our choice schools while considering the legal, social, logistical, and fiscal implications.

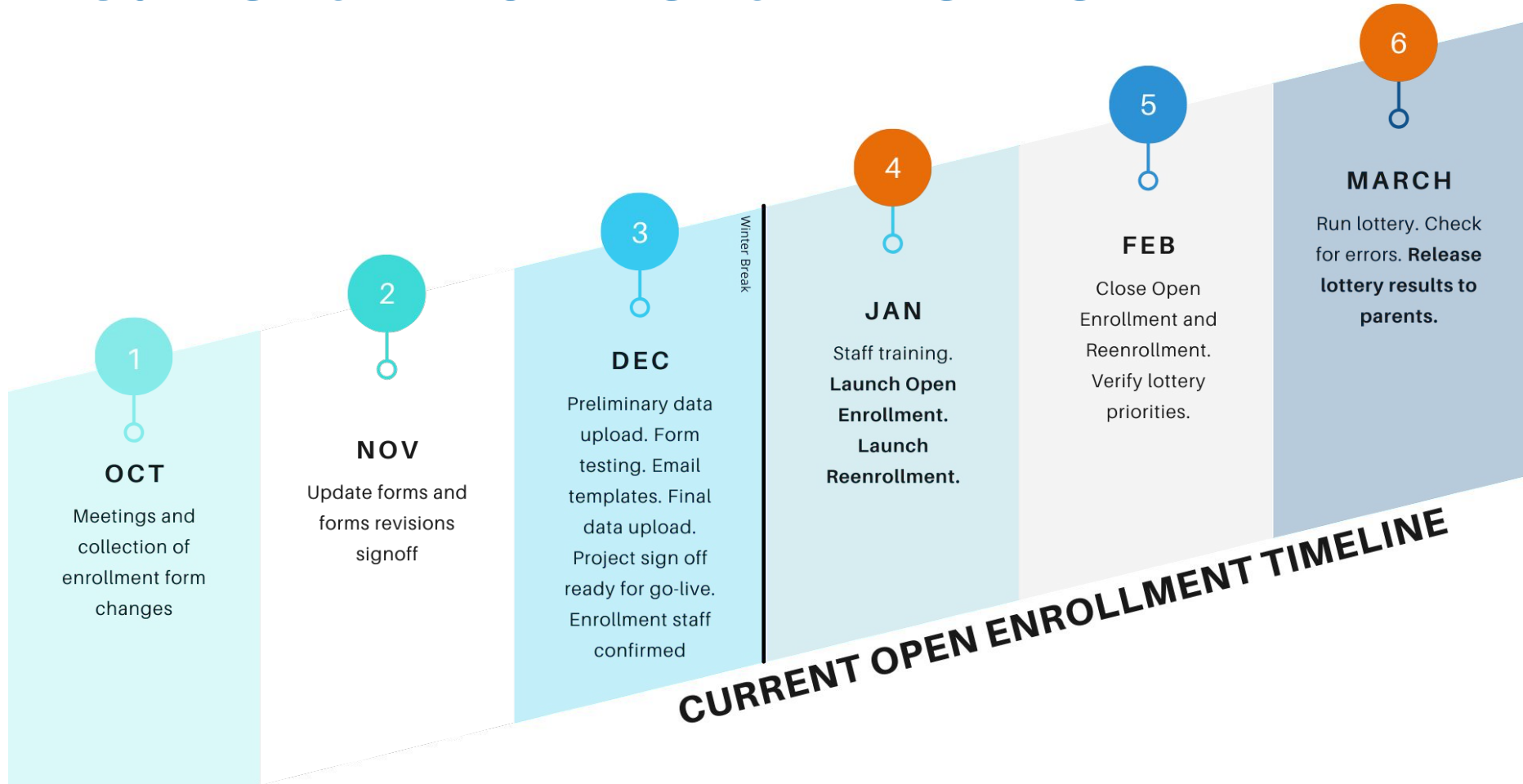
(\* Particularly with regards to students who are classified as EL and/or SED)



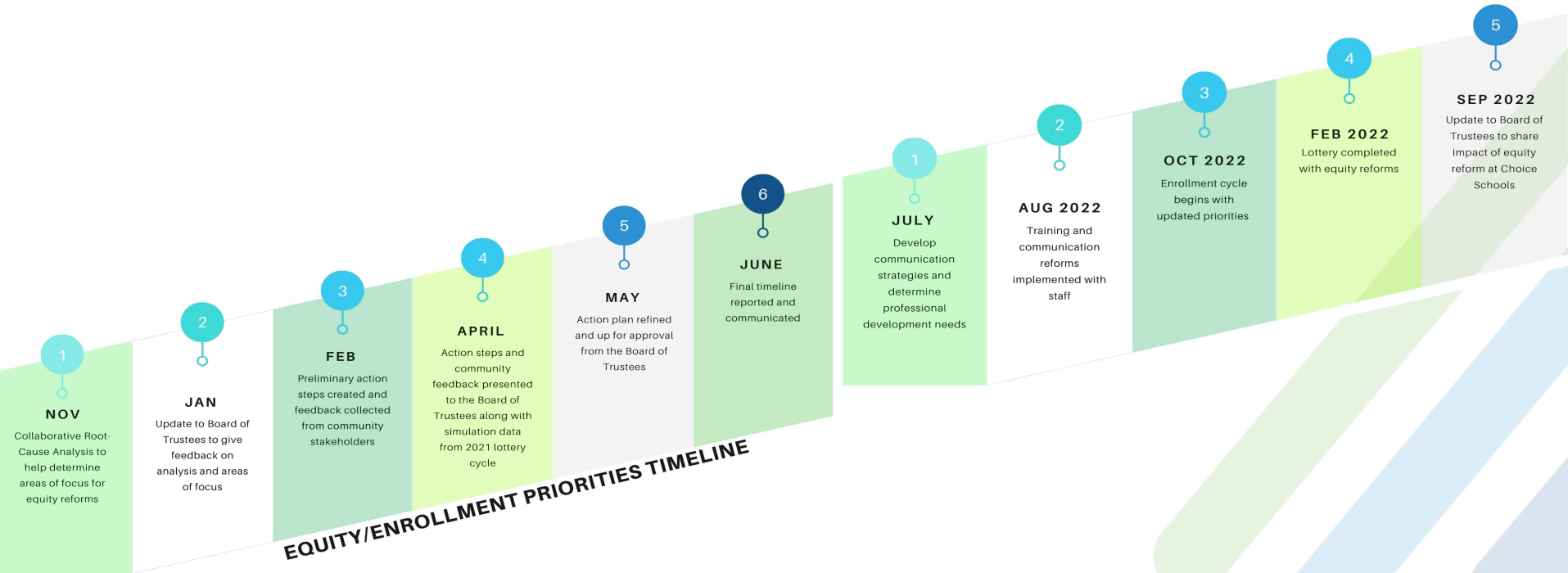
Mountain View  
Whisman  
School District

# Lottery Timelines

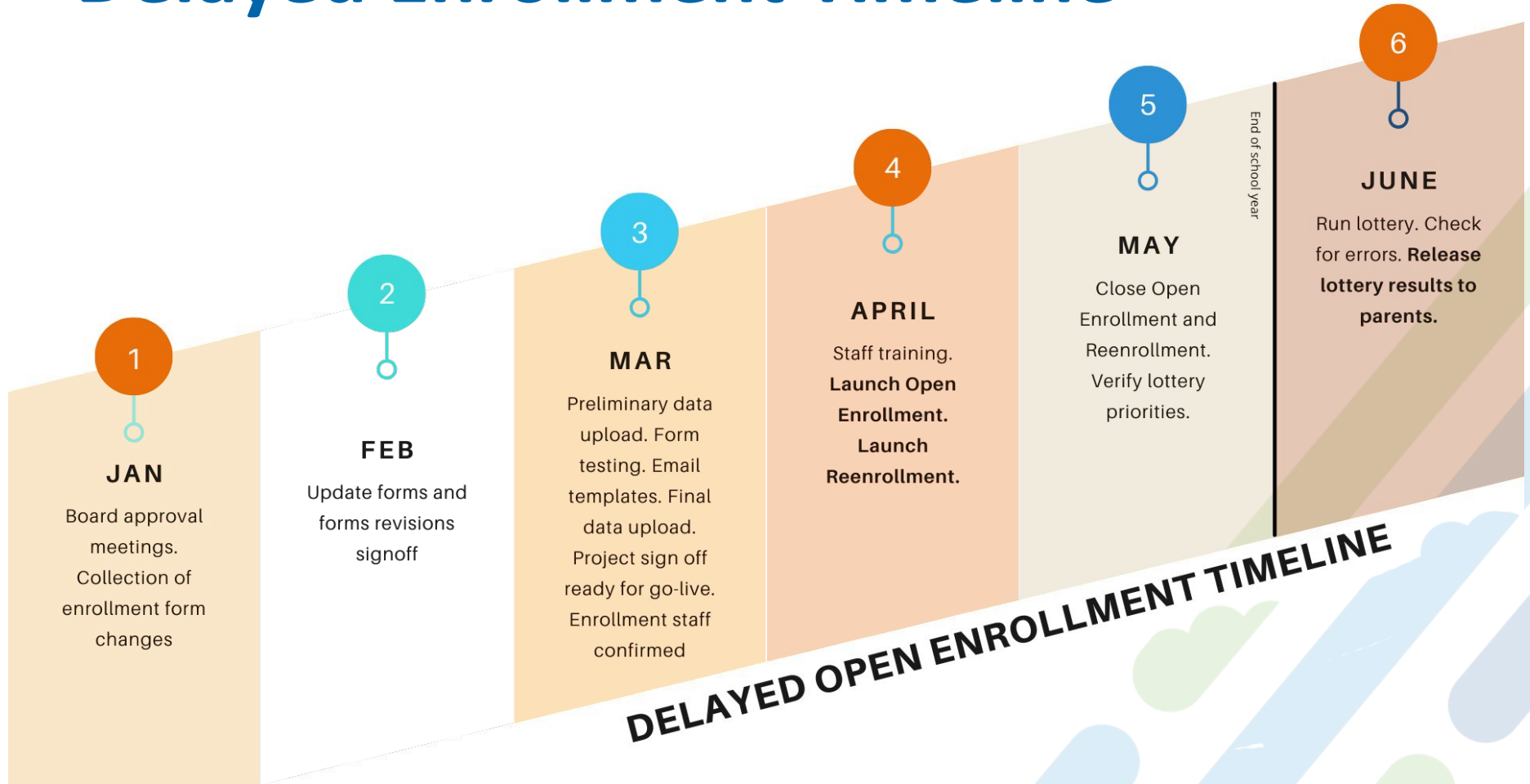
# Current Enrollment Timeline



# Proposed Equity Timeline



# Delayed Enrollment Timeline





**OCT**  
Meetings and collection of enrollment form changes

**NOV**  
Update forms and forms revisions signoff

**DEC**  
Preliminary data upload, Form testing, Email templates, Final data upload, Project sign off ready for go-live, Enrollment staff confirmed

**JAN**  
Staff training, Launch Open Enrollment, Launch Reenrollment.

**FEB**  
Close Open Enrollment and Reenrollment, Verify lottery priorities.

**MARCH**  
Run lottery, Check for errors, Release lottery results to parents.

**CURRENT OPEN ENROLLMENT TIMELINE**

**JAN**  
Board approval meetings, Collection of enrollment form changes

**FEB**  
Update forms and forms revisions signoff

**MAR**  
Preliminary data upload, Form testing, Email templates, Final data upload, Project sign off ready for go-live, Enrollment staff confirmed

**APRIL**  
Staff training, Launch Open Enrollment, Launch Reenrollment.

**MAY**  
Close Open Enrollment and Reenrollment, Verify lottery priorities.

**JUNE**  
Run lottery, Check for errors, Release lottery results to parents.

**DELAYED OPEN ENROLLMENT TIMELINE**

**NOV**  
Collaborative Root Cause Analysis to help determine areas of focus for equity reforms

**JAN**  
Update to Board of Trustees to give feedback on analysis and areas of focus

**FEB**  
Preliminary action steps created and feedback collected from community stakeholders

**APRIL**  
Action steps and community feedback presented to the Board of Trustees along with simulation data from 2021 lottery cycle

**MAY**  
Action plan refined and up for approval from the Board of Trustees

**JUNE**  
Final timeline reported and communicated

**JULY**  
Develop communication strategies and determine professional development needs

**AUG 2022**  
Training and communication reforms implemented with staff

**OCT 2022**  
Enrollment cycle begins with updated priorities

**FEB 2022**  
Lottery completed with equity reforms

**SEP 2022**  
Update to Board of Trustees to share impact of equity reform at Choice Schools

**EQUITY/ENROLLMENT PRIORITIES TIMELINE**



Mountain View  
Whisman  
School District

# Impact of Delayed Enrollment Schedule

# Unintended consequences of a delayed timeline

- Neighborhood enrollment cannot be finalized until the end of May.
  - Roster deadline will need to be June 3
  - Teacher placement
  - Will have to negotiate an extension for teacher placement
    - CBA notes teacher placements must be finalized by June 1st without a penalty (compensation or time)

# Unintended consequences, con't...

- Teacher hiring
  - Hiring traditionally occurs in March. Without enrollment numbers staff will have to overhire teachers to adjust for possible neighborhood enrollment shifts
- Re-enrollment for families delayed
  - re-enrollment occurs at the same time that lottery enrollment takes place
    - This allows parents to enter the lottery at both Choice Schools
  - We will lose some parents to Private schools
    - typically private school enrollment takes place in Mar.

# Unintended consequences, con't...

- Military families who get deployments in the spring will have access to lottery.
- Transportation
  - Unsure that staff will be able to adjust transportation routes for both Mistral and Stevenson
- After School
  - Staff will need direction on after-school programming
    - This will impact all schools not just the two choice schools

# Unintended consequences, con't...

- EL status
  - Possible compliance issue with administering the ELPAC assessment
    - Required to be administered within 30 calendar days of enrollment or 60 calendar days prior to instruction, but not before July 1
    - Using EL as a proxy for SED could encourage affluent EL families to use this status to gain a spot at one of the two choice schools



Mountain View  
Whisman  
School District

# Board of Trustee Feedback

# Board of Trustee Feedback

- Staff would like to know if there is Board majority to move to the delayed schedule?