



Mountain View
Whisman
School District

Community Restroom Project

Schematic Design, Budget and Schedule

June 17, 2021



Mountain View
Whisman
School District

Scope of Work

Scope of Work

- Installation of one (1) prefabricated community restroom building and associated sitework at the following locations:
 - Castro/Mistral Elementary School
 - Huff Elementary School
 - Landels Elementary School
- Each Restroom building will have two (2) single occupancy restrooms with standard finishes.



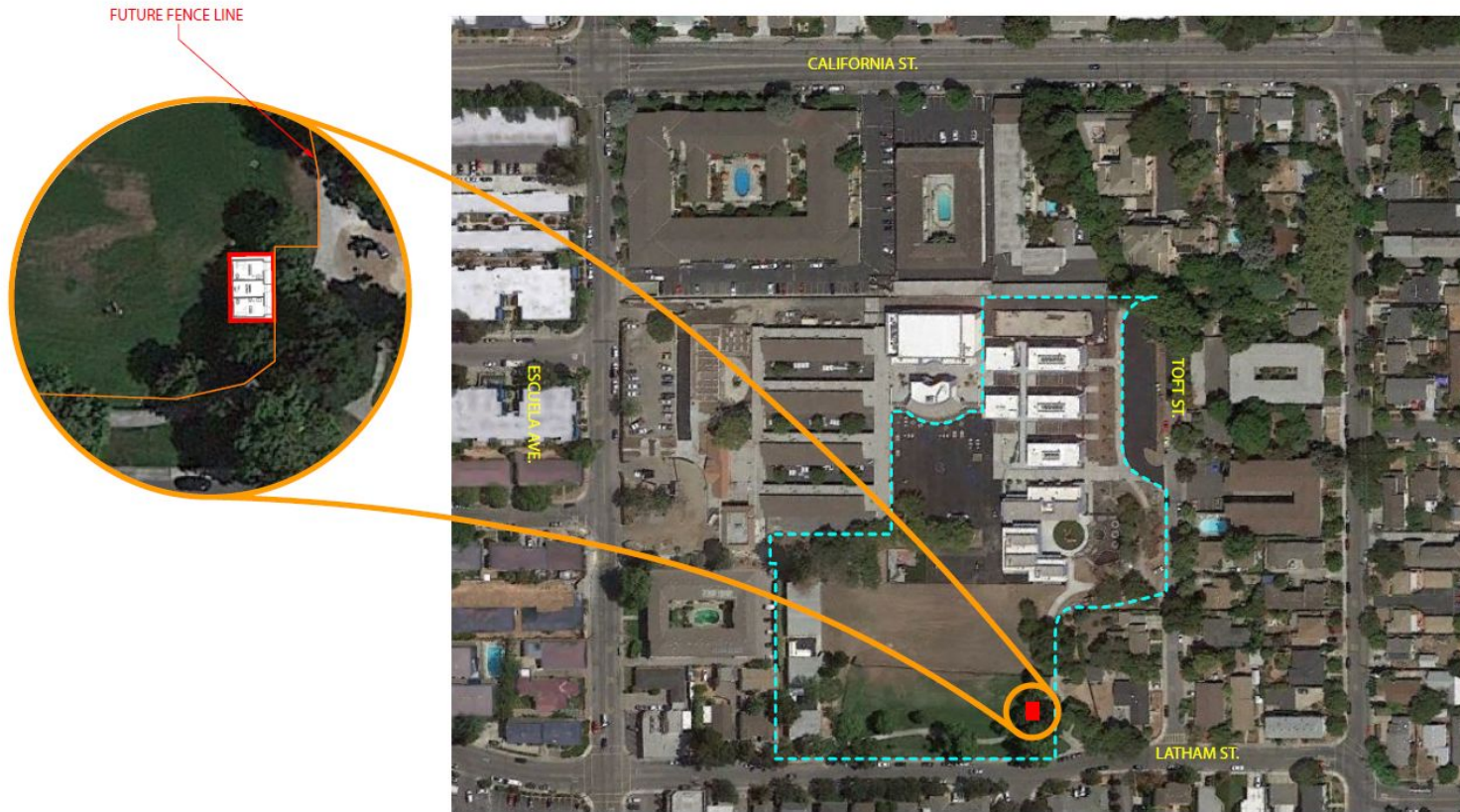
Mountain View
Whisman
School District

Proposed Plans

Proposed Building



Castro/Mistral Elementary School Location

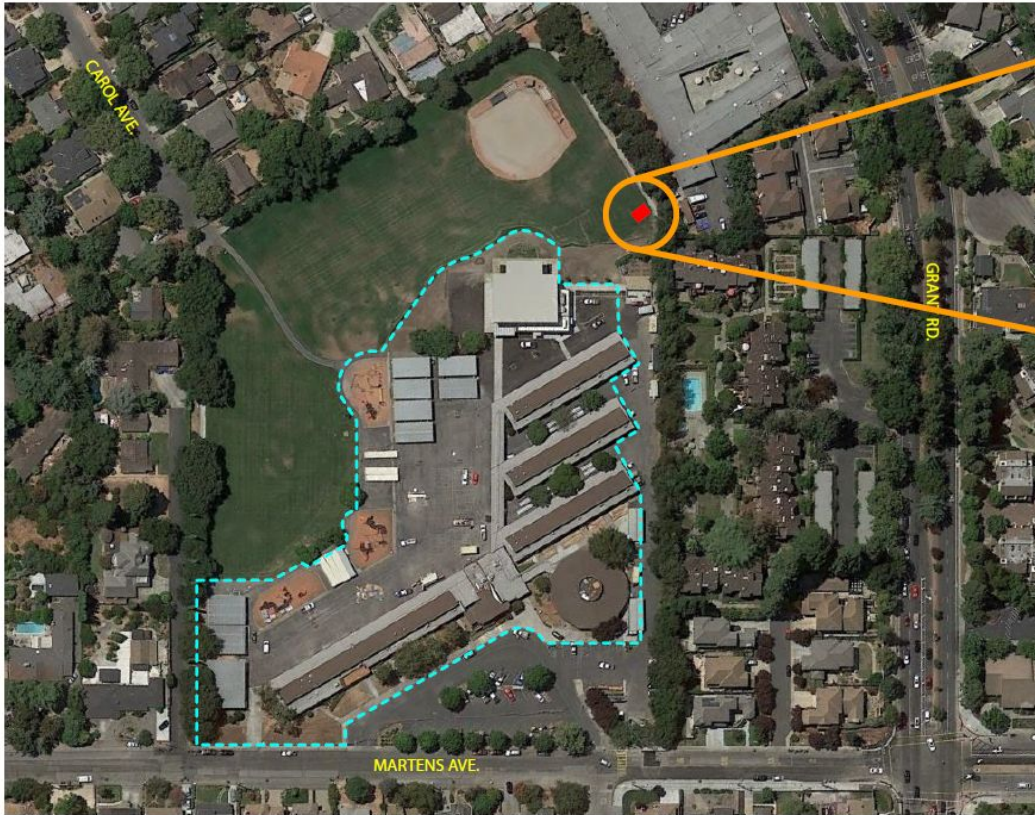


MARIANO CASTRO ELEMENTARY
MOUNTAIN VIEW WHISMAN SCHOOL DISTRICT

NEW PARK RESTROOM MODULAR BUILDING
NTS



Huff Elementary School Location

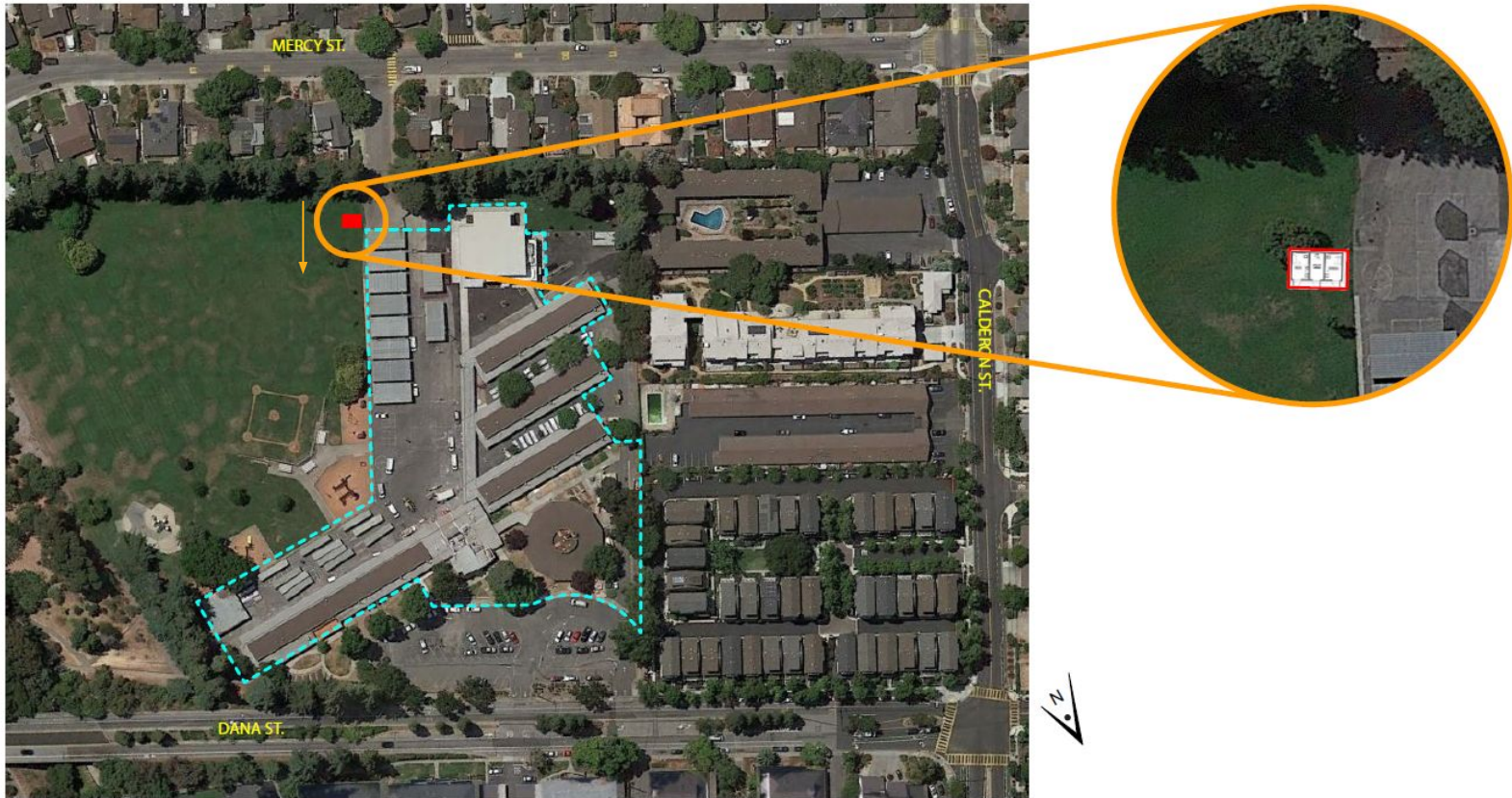


FRANK L. HUFF ELEMENTARY
MOUNTAIN VIEW WHISMAN SCHOOL DISTRICT

NEW PARK RESTROOM MODULAR BUILDING
NTS



Landels Elementary School Location



LANDELS ELEMENTARY
MOUNTAIN VIEW WHISMAN SCHOOL DISTRICT

NEW PARK RESTROOM MODULAR BUILDING
NTS





Mountain View
Whisman
School District

Proposed Budget

Schematic Design Budget

#	Description	Quantity	Unit	Unit \$	Total
1	Huff Site Development	1	ls	\$ 85,000	\$ 85,000
2	Landels Site Development	1	s	\$ 75,000	\$ 75,000
3	Mistral Site Development	1	ls	\$ 105,000	\$ 105,000
4	Modular Toilet Rooms	3	ea	\$ 192,000	\$ 576,000
5	Anticipated bid amount	1	ls		\$ 841,000

Project Cost

Description	Quantity		Unit Cost	Subtotal
Construction Budget	1	ls		\$ 841,000
Design Contingency	10	%		\$ 84,100
Construction Contingency	10	%		\$ 84,100
Architect Fees	1	ls		\$ 45,600
Architect Contingency	1	ls		\$ 12,615
Architect Reimbursable Expenses	1	ls		\$ 3,192
Blueprinting	1	ls		\$ 2,500
Topographic Survey	1	ls	\$ 15,000	\$ 15,000
Soils Report & Testing	1	%		\$ 8,410
CM Fees	4.5	%		\$ 37,845
DSA Inspector	3	mos.	\$ 15,000	\$ 45,000
Testing Laboratory	1	%		\$ 8,410
Bid Advertisements	1	ls		\$ 2,500
DSA Fees	1.2	%	\$ 1,009,200	\$ 12,110
CGS Fees	3	ea	\$ 3,600	\$ 10,800
CEQA	1	ls	\$ 2,500	\$ 2,500
Legal	1	ls	\$ 5,000	\$ 5,000
Misc. Expenses	1	ls	\$ 5,000	\$ 5,000
Grand Total				\$ 1,225,682



Mountain View
Whisman
School District

Schedule

Schedule

Task Name	Duration	Start	Finish
Community Restrooms at Castro/Mistral, Huff and Landels ES	314 days	Mon 11/16/20	Thu 1/27/22
Schematic Design	75 days	Mon 11/16/20	Fri 2/26/21
Review Process with District stakeholders and City	60 days	Mon 3/1/21	Fri 5/21/21
BOT Info - SD Approval	1 day	Thu 6/3/21	Thu 6/3/21
BOT Action SD Approval	1 day	Thu 6/17/21	Thu 6/17/21
Construction Documents	50 days	Fri 6/18/21	Thu 8/26/21
Award and Procure Manufactured Restroom Buildings	90 days	Fri 6/18/21	Thu 10/21/21
DSA Review (Access Only)	30 days	Fri 8/27/21	Thu 10/7/21
Bid & Award Site Package	25 days	Fri 10/8/21	Thu 11/11/21
Construction	55 days	Fri 11/12/21	Thu 1/27/22



Mountain View
Whisman
School District

Thoughts and Questions