



Mountain View
Whisman
School District

Site Lighting

Schematic Design, Budget and Schedule

June 17, 2021



Mountain View
Whisman
School District

Scope of Work

Scope of Work

- Provide pole mounted and bollard style LED lighting to illuminate path of travel from parking areas and pedestrian access routes to campus buildings.
- Lighting to be 2700K as requested during community meetings and subsequent Board presentation.



Mountain View
Whisman
School District

Proposed Plans

Fixture Types



d^{series}

D-Series LED Bollard



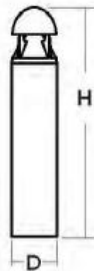
Buy American

Specifications

Diameter: 8" Round
(20.3 cm)

Height: 42"
(106.7 cm)

Weight (max): 27 lbs
(12.25 kg)



d^{series}

D-Series Size 1 LED Area Luminaire



Specifications

EPA: 1.01 ft²
(0.09 m²)

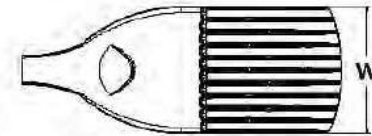
Length: 33"
(83.8 cm)

Width: 13"
(33.0 cm)

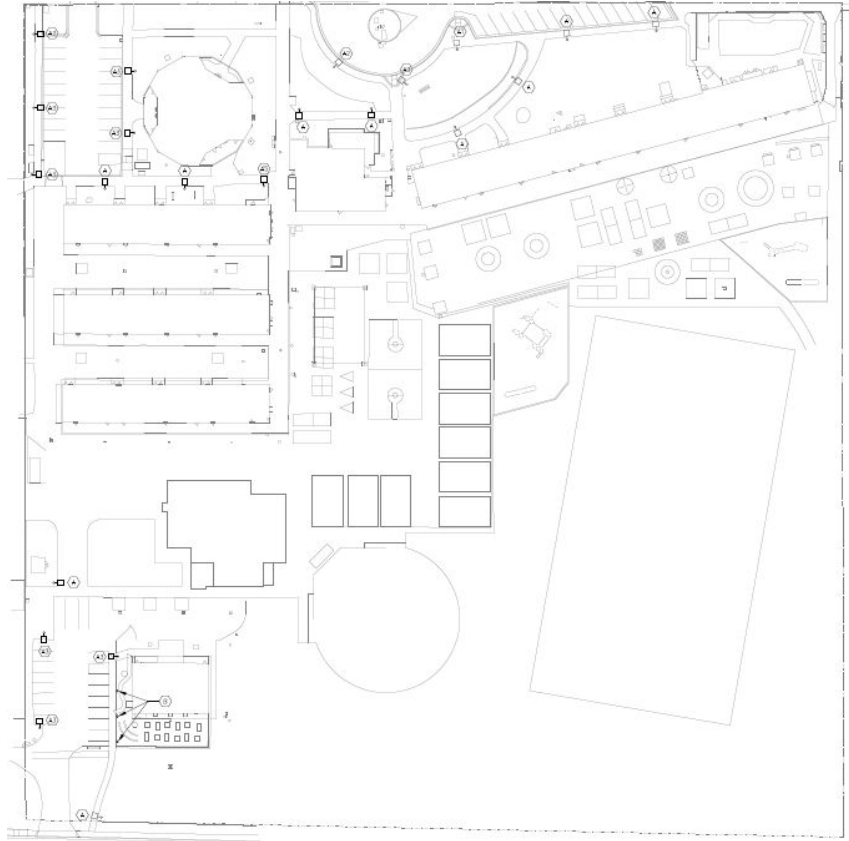
Height H1: 7-1/2"
(19.0 cm)

Height H2: 3-1/2"
(9.1 cm)

Weight (max): 27 lbs
(12.25 kg)



Benjamin Bubb Elementary School - Site Lighting Plan

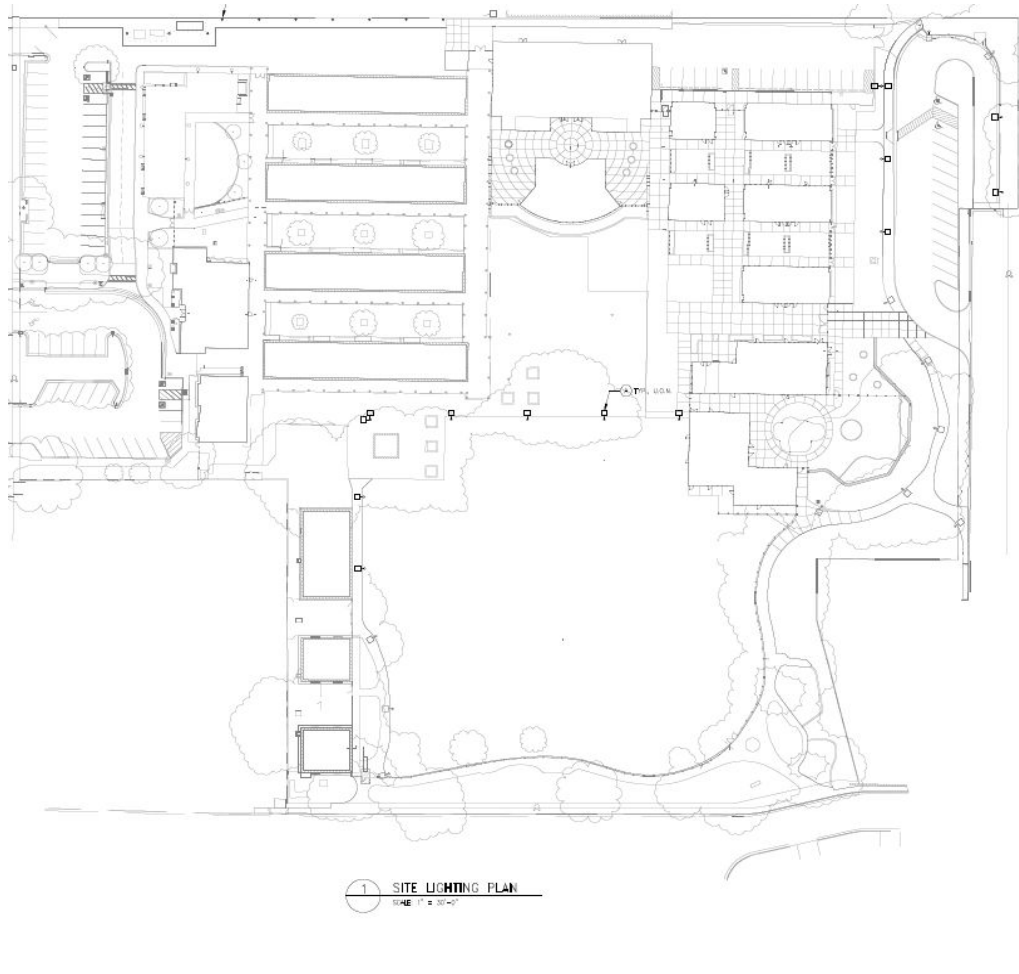


1 SITE LIGHTING PLAN
SCALE: 1" = 30'-0"

0 15 30 45 60
GRAPHIC SCALE: 1" = 30'

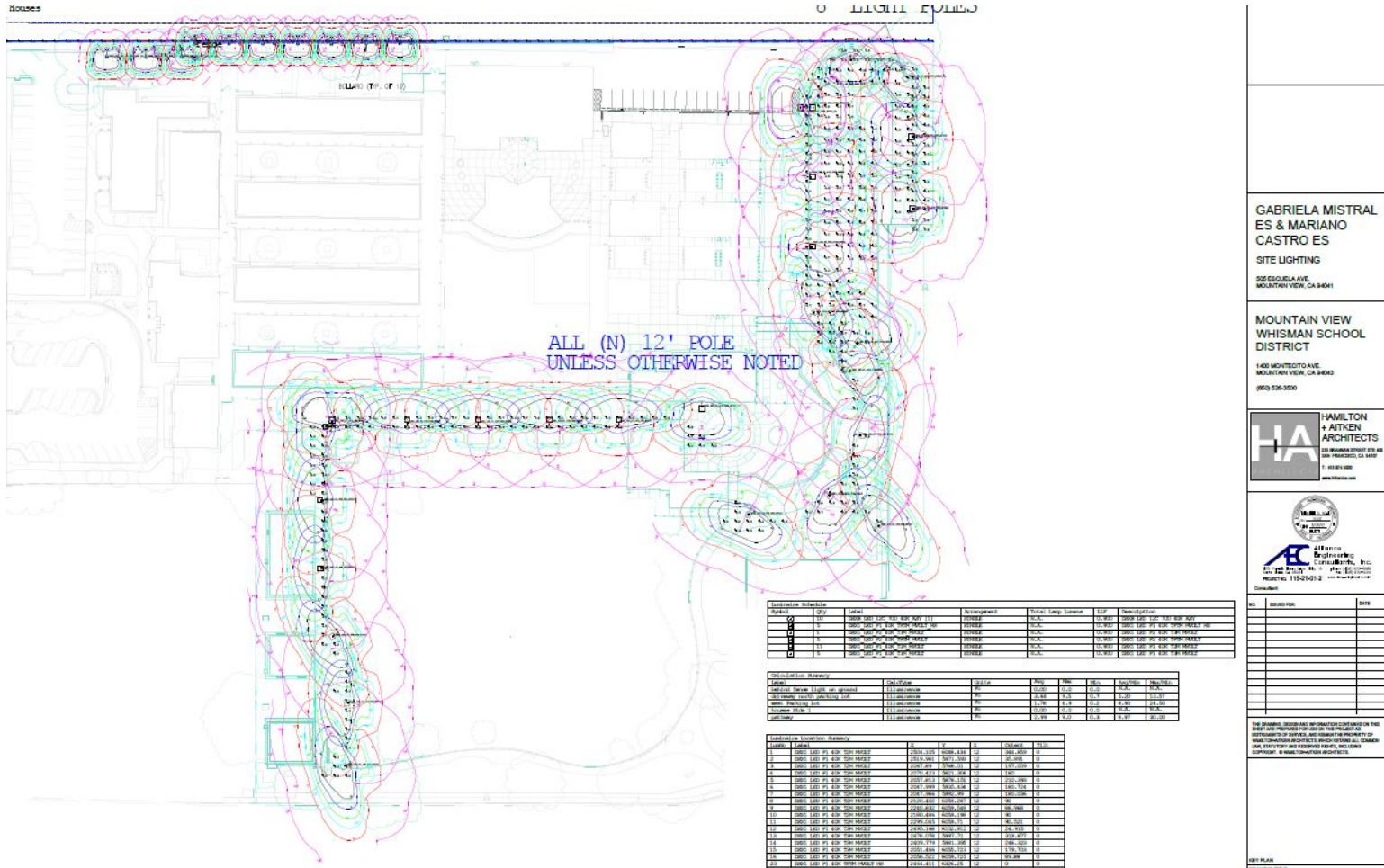
BENJAMIN BUBB ELEMENTARY SCHOOL SITE LIGHTING 625 HANG AVE. MOUNTAIN VIEW, CA 94040	
MOUNTAIN VIEW WHISMAN SCHOOL DISTRICT 1400 MONTECITO AVE. MOUNTAIN VIEW, CA 94040 (925) 258-3000	
 HAMILTON + AIKEN ARCHITECTS 325 MANCINI STREET STE. 400 SAN FRANCISCO, CA 94102 T: 415 675 5038 www.hamiltonaiken.com	
 AC CONSULTING ENGINEERS, INC. 1500 AVENUE 84, SUITE 300 REDWOOD CITY, CA 94063 TEL: 650 967-2300 WWW.ACCONSULTINGENGINEERS.COM	
NO.	DATE
THE CHANGES, STUDY AND INFORMATION CONTAINED ON THIS SHEET ARE FOR THE PROJECT AND ARE NOT TO BE REPRODUCED OR USED IN ANY MANNER WITHOUT THE WRITTEN PERMISSION OF HAMILTON + AIKEN ARCHITECTS. ANY REPRODUCTION OR USE OF THIS SHEET WITHOUT THE WRITTEN PERMISSION OF HAMILTON + AIKEN ARCHITECTS IS PROHIBITED.	
KEY PLAN DRAWING TITLE SITE LIGHTING PLAN	
SHEET NUMBER E1.1	
DATE	PROJECT NO.

Gabriela Mistral and Mariano Castro ES - Site Lighting Plan



GABRIELA MISTRAL ES & MARIANO CASTRO ES SITE LIGHTING 2250 SQUEALE AV. MOUNTAIN VIEW, CA 94041	
MOUNTAIN VIEW WHISMAN SCHOOL DISTRICT 1400 MONTECITO AVE. MOUNTAIN VIEW, CA 94040 (925) 528-3500	
HAMILTON & AITKEN ARCHITECTS 100 MONTECITO STREET STE. 100 MOUNTAIN VIEW, CA 94041 P: 925 528-3500 www.hamaitken.com	
 A. E. CHOUHRY Professional Engineer, No. 52112 State of California, Exp. 12/31/22 PROJECT NO. 119-21-01-2	
NO.	DATE
DATE PLOTTED: 11/11/2021 10:45:42 AM DRAWING NO: 119-21-01-2-01 PROJECT NO: 119-21-01-2 SCALE: AS SHOWN DRAWN BY: AEA CHECKED BY: AEA DATE: 11/11/21	
SHEET TITLE SITE LIGHTING PLAN	
SHEET NUMBER E1.2	
CADFILE DATE REVISIONS	PROJECT NO. SHEET NO.

Gabriela Mistral and Mariano Castro ES - Isocurve Diagram



GABRIELA MISTRAL
ES & MARIANO CASTRO ES
SITE LIGHTING

328 GABRIELA AVE
MOUNTAIN VIEW, CA 94031

MOUNTAIN VIEW
WHISMAN SCHOOL
DISTRICT

1400 MOUNTAIN AVE
MOUNTAIN VIEW, CA 94031
(925) 536-3500

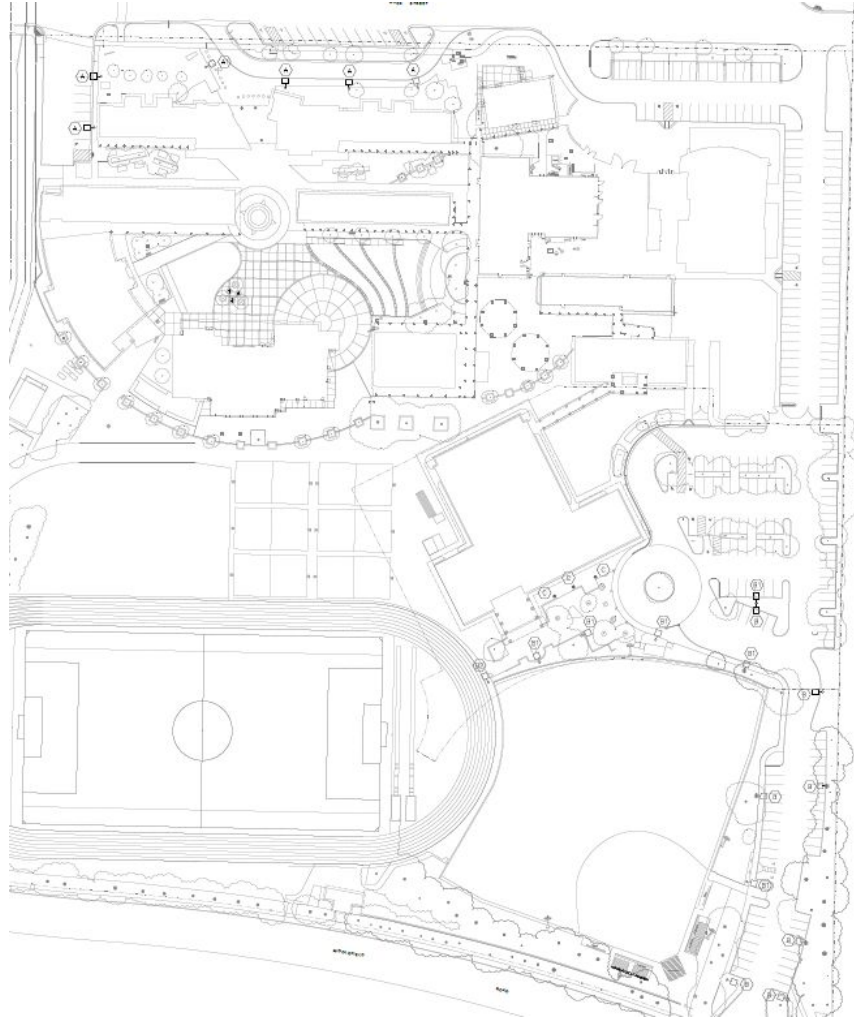
HA HAMILTON + AITKEN ARCHITECTS
228 MARSH STREET SUITE 200
SAN FRANCISCO, CA 94102
P. 415.398.0000
WWW.HAMILTONAITKEN.COM

Professional Engineer
M. G. ...
11/12/2012

DATE PLAN

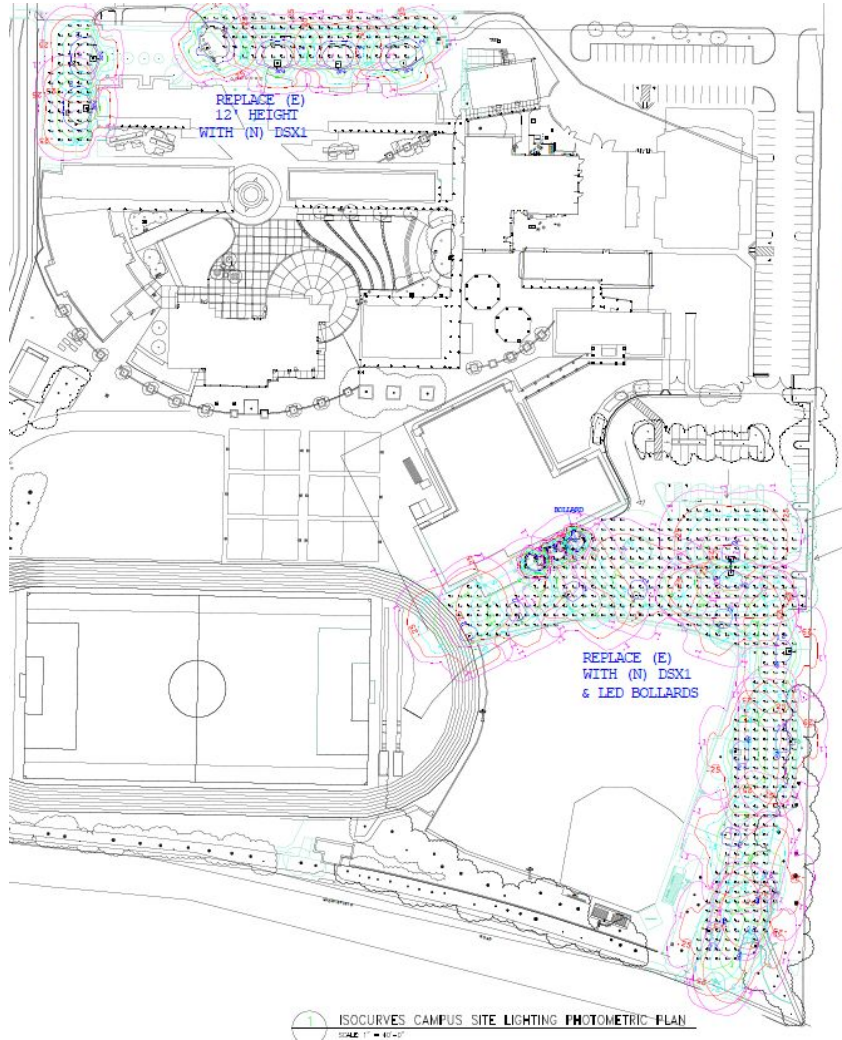
The drawings, specifications and other documents prepared by the ENGINEER ARE PROVIDED FOR THE PROJECT AND THE PROJECT IS THE PROPERTY OF HAMILTON + AITKEN ARCHITECTS. NO OTHER USE, REPRODUCTION, OR ALTERATION OF THESE DRAWINGS OR SPECIFICATIONS IS PERMITTED WITHOUT THE WRITTEN CONSENT OF HAMILTON + AITKEN ARCHITECTS.

Crittenden Middle School - Site Lighting Plan



CRITTENDEN MIDDLE SCHOOL	
SITE LIGHTING	
1761 ROCK ST. MOUNTAIN VIEW, CA 94035	
MOUNTAIN VIEW WHISMAN SCHOOL DISTRICT	
1400 MONTECITO AVE. MOUNTAIN VIEW, CA 94035 (925) 538-3500	
	HAMILTON +AITKEN ARCHITECTS 138 MARINA STREET #200 SAN FRANCISCO, CA 94133 TEL: 415-398-8300 WWW.HAMILTONAITKEN.COM
	BRUCE G. CROWLEY, Inc. 1100 BAY ST., SUITE 100 BERKELEY, CA 94704 TEL: 925-835-0100 WWW.BRUCEG.CROWLEY.COM
NO.	DATE
<small>THE DRAWING, SPECIFICATIONS AND INFORMATION CONTAINED HEREIN ARE THE PROPERTY OF HAMILTON + AITKEN ARCHITECTS. IT IS TO BE USED ONLY FOR THE PROJECT AND SITE SPECIFICALLY IDENTIFIED HEREON. NO REPRODUCTION OR TRANSMISSION IN ANY FORM OR BY ANY MEANS, ELECTRONIC OR MECHANICAL, INCLUDING PHOTOCOPYING, RECORDING, OR BY ANY INFORMATION STORAGE AND RETRIEVAL SYSTEM, IS PERMITTED WITHOUT THE WRITTEN PERMISSION OF HAMILTON + AITKEN ARCHITECTS.</small>	
<small>DATE PLOTTED: _____ DRAWING TITLE: _____</small>	
SITE LIGHTING PLAN	

Crittenden Middle School - Isocurve Diagram



1 ISOCURVES CAMPUS SITE LIGHTING PHOTOMETRIC PLAN
SCALE: 1" = 40'-0"

Fixture	Footcandle	Height	Beam Spread	Beam Diameter	Beam Angle	Beam Spread
DSX1	100	12'	120°	12'	120°	12'
DSX1	150	12'	120°	12'	120°	12'
DSX1	200	12'	120°	12'	120°	12'
DSX1	250	12'	120°	12'	120°	12'
DSX1	300	12'	120°	12'	120°	12'
DSX1	350	12'	120°	12'	120°	12'
DSX1	400	12'	120°	12'	120°	12'
DSX1	450	12'	120°	12'	120°	12'
DSX1	500	12'	120°	12'	120°	12'
DSX1	550	12'	120°	12'	120°	12'
DSX1	600	12'	120°	12'	120°	12'
DSX1	650	12'	120°	12'	120°	12'
DSX1	700	12'	120°	12'	120°	12'
DSX1	750	12'	120°	12'	120°	12'
DSX1	800	12'	120°	12'	120°	12'
DSX1	850	12'	120°	12'	120°	12'
DSX1	900	12'	120°	12'	120°	12'
DSX1	950	12'	120°	12'	120°	12'
DSX1	1000	12'	120°	12'	120°	12'

Footcandle	Height	Beam Spread	Beam Diameter	Beam Angle	Beam Spread
10	12'	120°	12'	120°	12'
20	12'	120°	12'	120°	12'
30	12'	120°	12'	120°	12'
40	12'	120°	12'	120°	12'
50	12'	120°	12'	120°	12'
60	12'	120°	12'	120°	12'
70	12'	120°	12'	120°	12'
80	12'	120°	12'	120°	12'
90	12'	120°	12'	120°	12'
100	12'	120°	12'	120°	12'

Footcandle	Height	Beam Spread	Beam Diameter	Beam Angle	Beam Spread
100	12'	120°	12'	120°	12'
150	12'	120°	12'	120°	12'
200	12'	120°	12'	120°	12'
250	12'	120°	12'	120°	12'
300	12'	120°	12'	120°	12'
350	12'	120°	12'	120°	12'
400	12'	120°	12'	120°	12'
450	12'	120°	12'	120°	12'
500	12'	120°	12'	120°	12'
550	12'	120°	12'	120°	12'
600	12'	120°	12'	120°	12'
650	12'	120°	12'	120°	12'
700	12'	120°	12'	120°	12'
750	12'	120°	12'	120°	12'
800	12'	120°	12'	120°	12'
850	12'	120°	12'	120°	12'
900	12'	120°	12'	120°	12'
950	12'	120°	12'	120°	12'
1000	12'	120°	12'	120°	12'

CRITTENDEN MIDDLE SCHOOL
 SITE LIGHTING
 1500 ROCK ST.
 MOUNTAIN VIEW, CA 94030

MOUNTAIN VIEW WHISMAN SCHOOL DISTRICT
 1400 MONTECITO AVE.
 MOUNTAIN VIEW, CA 94030
 (925) 238-3500

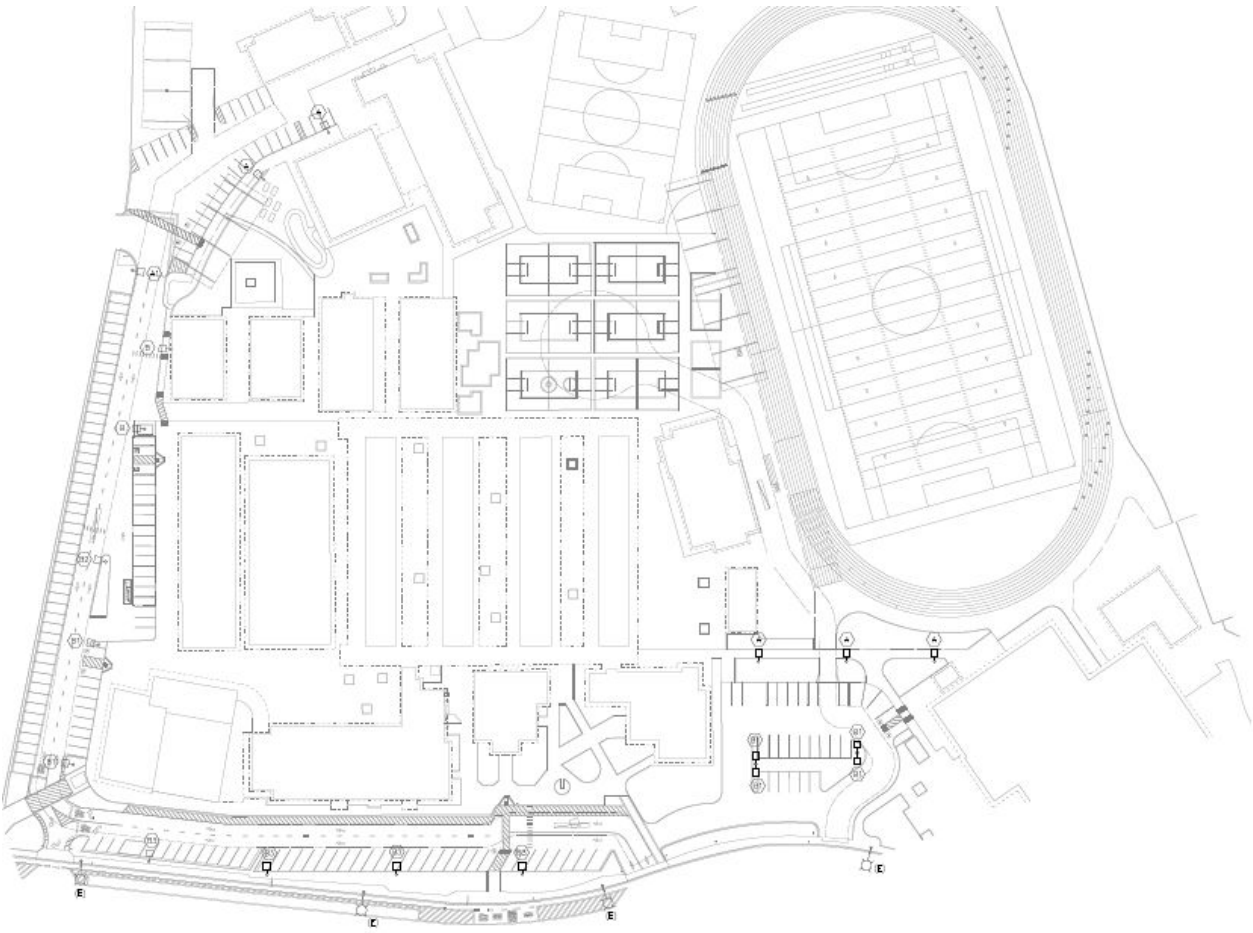
HA HAMILTON + ATKIN ARCHITECTS
 100 W. BROADWAY ST. #100
 SAN FRANCISCO, CA 94111
 (415) 774-1000
 www.hamilton.com

ALLIANCE CONSULTANTS, INC.
 1100 W. 14TH ST. #100
 SAN FRANCISCO, CA 94111
 (415) 774-1000
 www.alliance.com

DATE: 10/15/13
 SHEET NO.: 11/13
 PROJECT NO.: 13-001

ISOCURVES CAMPUS SITE LIGHTING PHOTOMETRIC PLAN
 SHEET NUMBER
E1.3A

Graham Middle School - Site Lighting Plan



GRAHAM MIDDLE SCHOOL

SITE LIGHTING

1175 CASTRO ST.
MOUNTAIN VIEW, CA 94036

MOUNTAIN VIEW WHISMAN SCHOOL DISTRICT

1400 MONTECITO AVE.
MOUNTAIN VIEW, CA 94036
(800) 529-3520

HAMILTON + AITKEN ARCHITECTS

 258 GRAMM STREET, 2ND FLOOR
 SAN FRANCISCO, CA 94102
 T. 415.474.8227
 www.hamaitken.com

America
Engineering
 CONSULTANTS, INC.
 1425 MARSH ROAD, SUITE 200
 HAYWARD, CA 94541-2104
 (925) 786-0700
 Fax: (925) 786-0705
 www.aecworks.com

Consultant:

NO.	DESK FILE	DATE

THE ORIGINAL DESIGN AND INFORMATION CONTAINED ON THIS DRAWING AND PROVIDED FOR USE ONLY PROJECT IS THE SOLE PROPERTY OF HAMILTON + AITKEN ARCHITECTS. ANY REUSE OR CHANGE OF ANY PART WITHOUT WRITTEN PERMISSION IS STRICTLY PROHIBITED. COPYRIGHT © HAMILTON + AITKEN ARCHITECTS.

KEY PLAN:
 DRAWING TITLE:
SITE LIGHTING PLAN

Graham Middle School - Isocurve Diagram



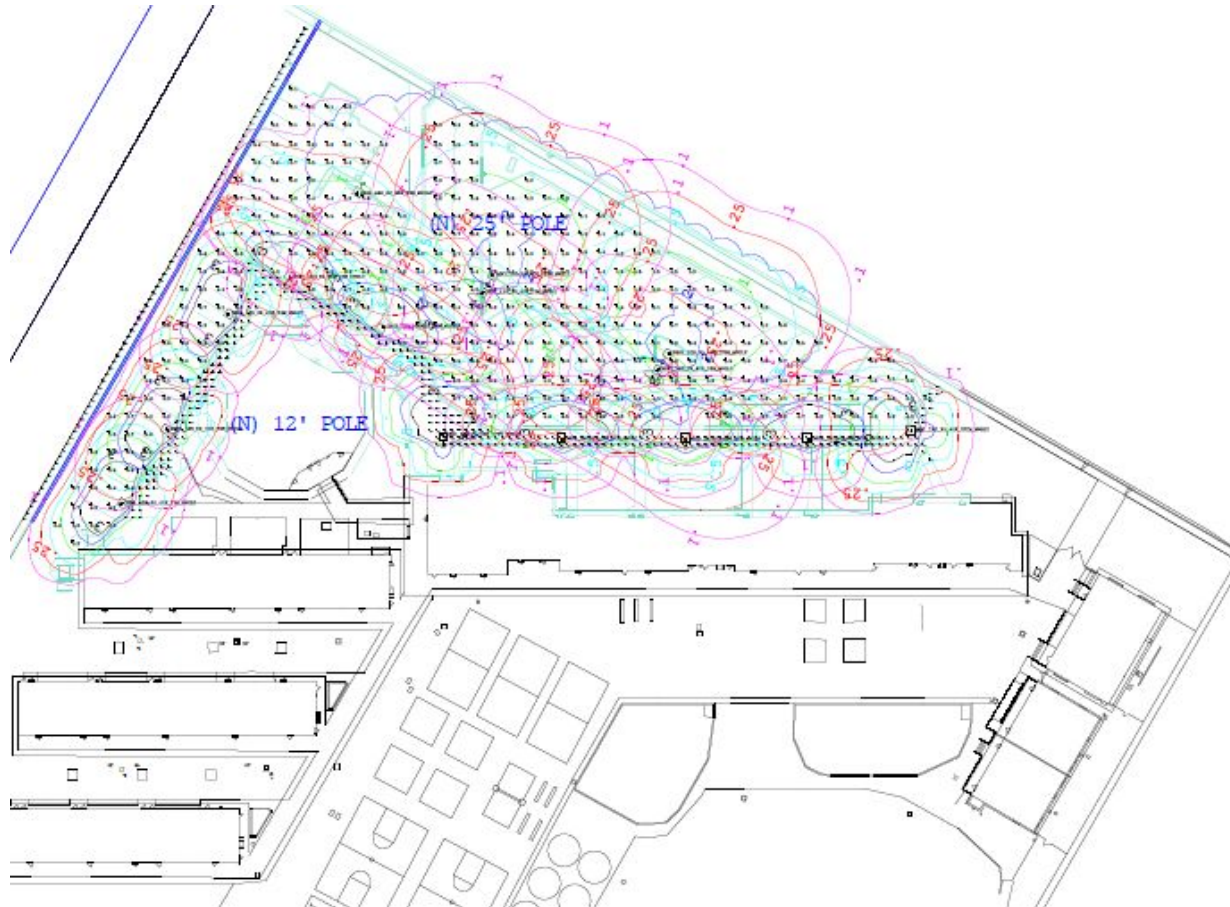
Huff Elementary School - Site Lighting Plan



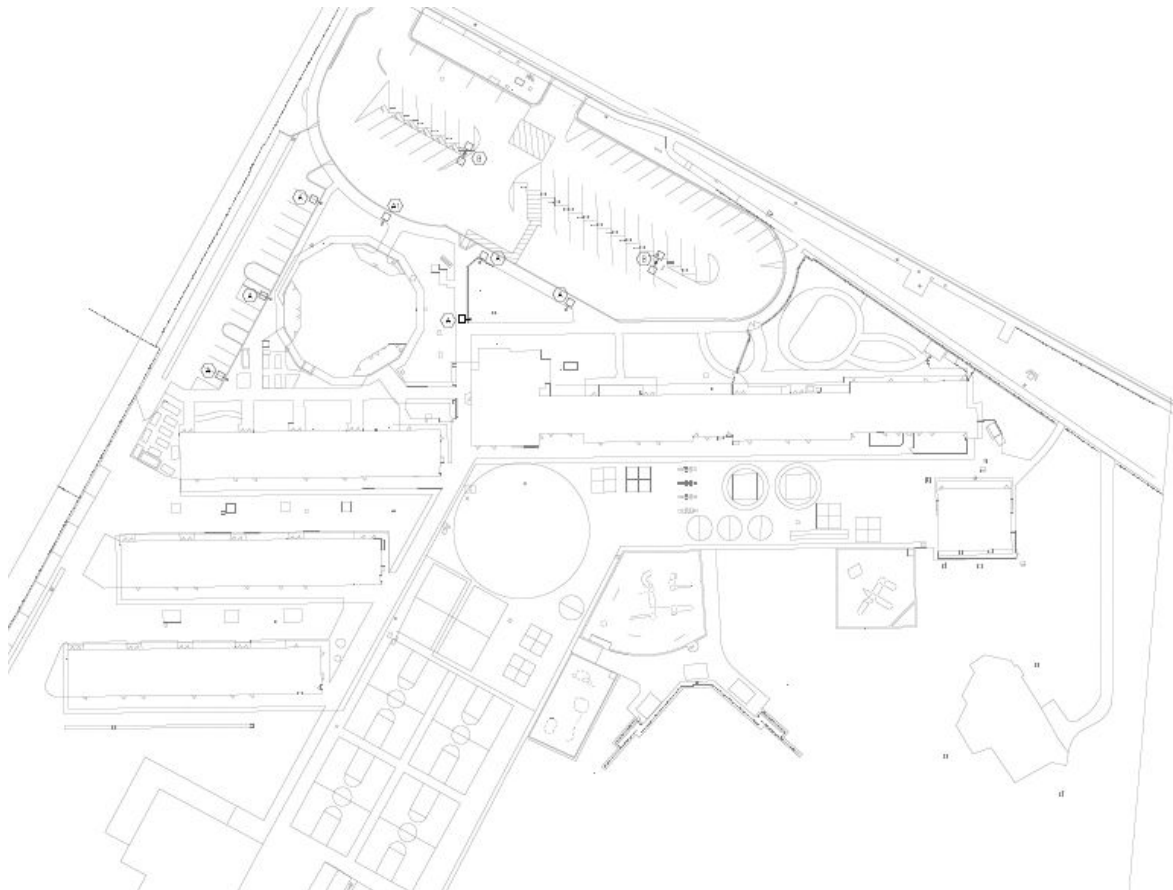
1 SITE LIGHTING PLAN
SCALE 1" = 30'-0"

<p>FRANK L. HUFF ELEMENTARY SCHOOL SITE LIGHTING 353 MARTINE AV. MOUNTAIN VIEW, CA 94040</p>		
<p>MOUNTAIN VIEW WHISMAN SCHOOL DISTRICT 1400 MONTECITO AVE. MOUNTAIN VIEW, CA 94040 (925) 526-3300</p>		
<p>HA HAMILTON + ATKIN ARCHITECTS 120 BURNHAM STREET, STE. 400 SAN FRANCISCO, CA 94107 T: 415.397.0000 www.hamilton-atkin.com</p>		
<p>AC ALLIANCE ARCHITECTS CORPORATION, Inc. 1000 BAY STREET, SUITE 100 EMERYVILLE, CA 94608 PROJECT NO. 150-21-010 DATE: 08-14-17</p>		
NO.	ISSUED FOR	DATE
<p><small>THIS DRAWING, DESIGN AND ANY DATA CONTAINED ON THIS SHEET ARE PROVIDED FOR THE USE OF THE CLIENT AS A STATEMENT OF SERVICES, AND UNDER THE PROVISIONS OF HAMILTON+ATKIN ARCHITECTS, INC.'S STANDARD AGREEMENT. THIS SHEET IS NOT TO BE REPRODUCED OR TRANSMITTED IN ANY FORM OR BY ANY MEANS, ELECTRONIC OR MECHANICAL, INCLUDING PHOTOCOPYING, RECORDING, OR BY ANY INFORMATION SYSTEM.</small></p>		
<p>REV. PLAN DRAWING TITLE</p>		
<p>SITE LIGHTING PLAN</p>		

Huff Elementary School - Isocurve Diagram



Landels Elementary School - Site Lighting Plan



**EDITH LANDELS
ELEMENTARY
SCHOOL**
SITE LIGHTING
115 WEST DANA ST.
MOUNTAIN VIEW, CA 94031

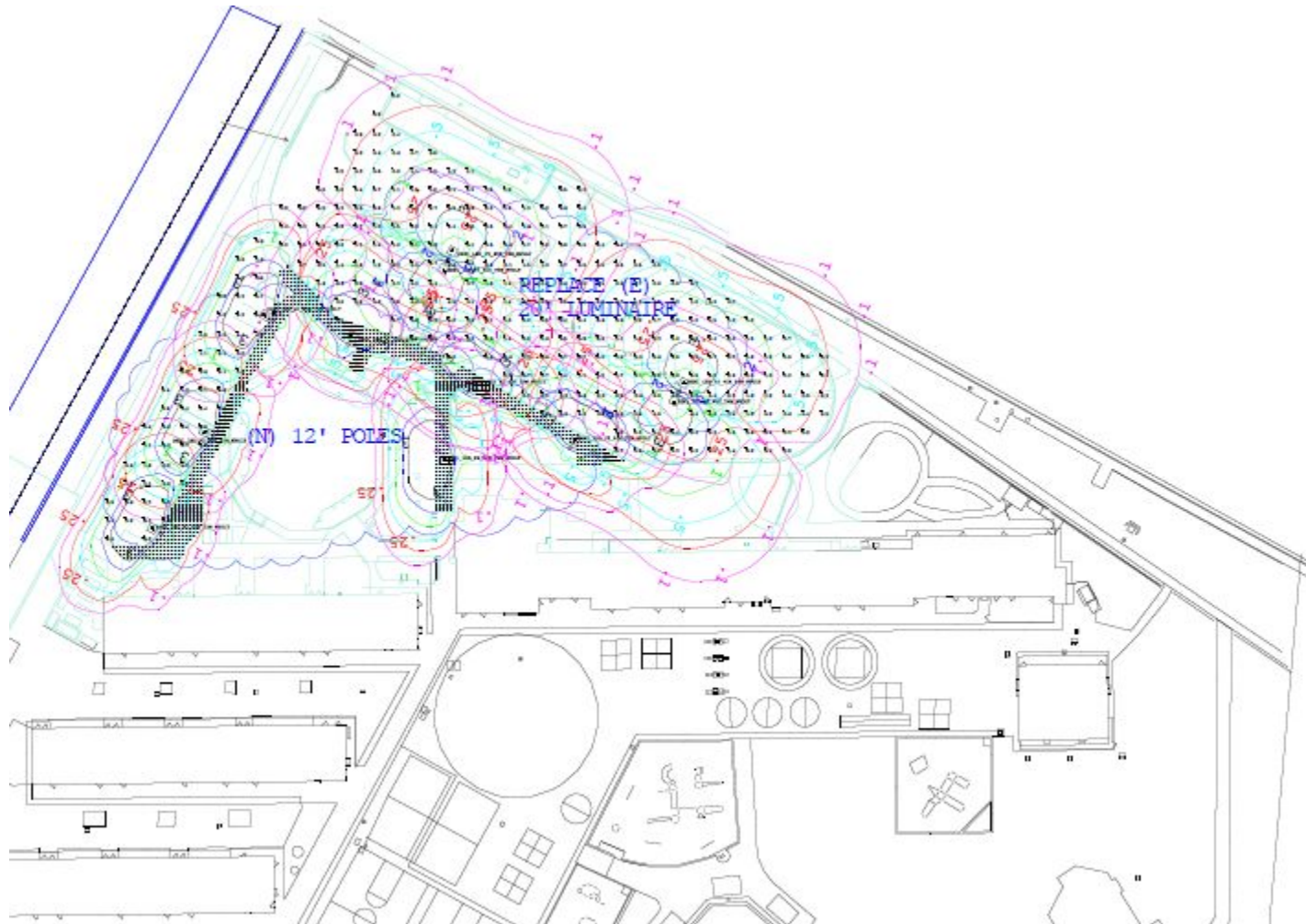
**MOUNTAIN VIEW
WHISMAN SCHOOL
DISTRICT**
1400 MONTECITO AVE.
MOUNTAIN VIEW, CA 94043
(925) 526-3320

HA HAMILTON
+ AITKEN
ARCHITECTS
1000 SHAWAN STREET STE 400
SAN FRANCISCO, CA 94107
T. 415.674.8000
www.hamiltonaitken.com

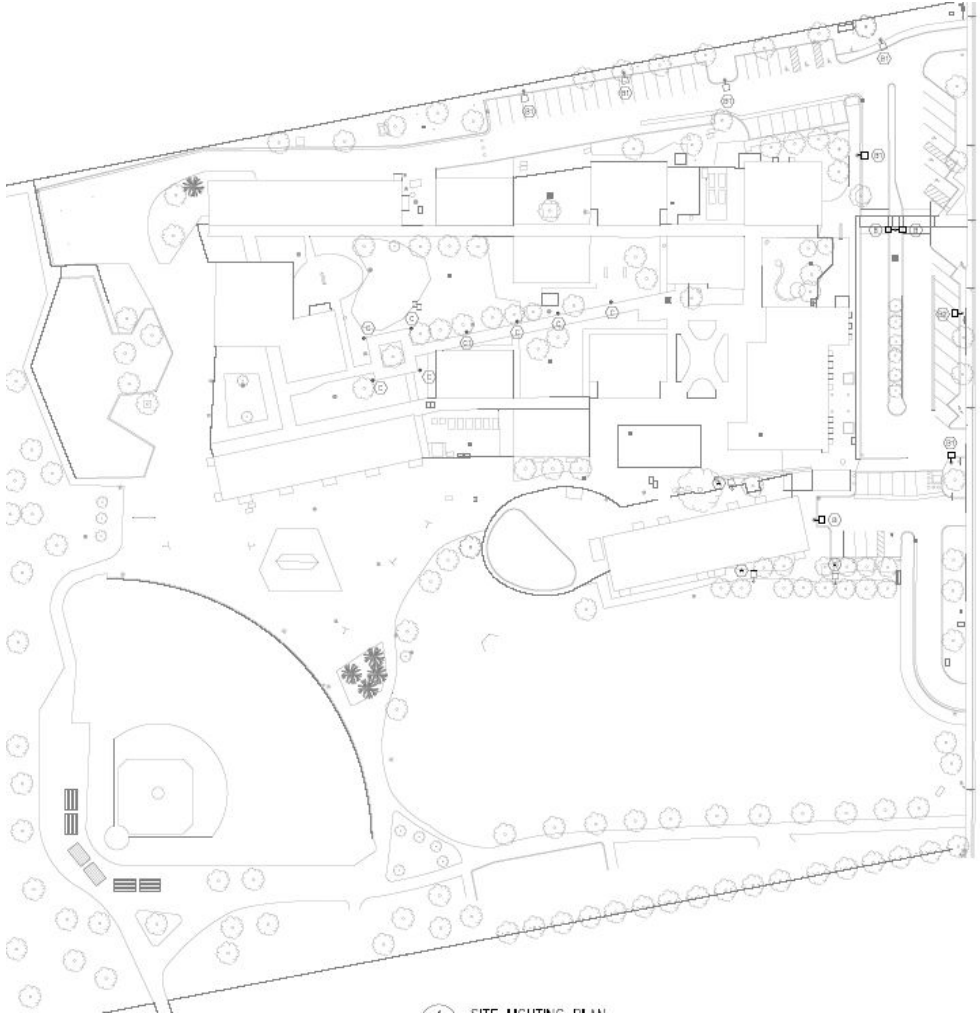
Jeffrey A. Aitken
Professional Engineer
License No. 46833 - ME
Mechanical
State of California
Contractor
No. _____
Issued For _____
Site _____

THE DRAWING, DESIGN AND INFORMATION CONTAINED ON THIS SHEET AND PROVIDED FOR USE BY THE PROJECT IS THE PROPERTY OF HAMILTON + AITKEN ARCHITECTS AND IS TO BE USED ONLY FOR THE PROJECT AND PURPOSES SPECIFICALLY IDENTIFIED ON THIS SHEET. NO PART OF THIS DRAWING, DESIGN OR INFORMATION IS TO BE REPRODUCED, COPIED, EITHER WHOLLY OR IN PART, OR TRANSMITTED IN ANY FORM OR BY ANY MEANS, WITHOUT THE WRITTEN PERMISSION OF HAMILTON + AITKEN ARCHITECTS.

Landels Elementary School - Isocurve Diagram



Monta Loma Elementary School - Site Lighting Plan



**MONTA LOMA
ELEMENTARY
SCHOOL**
SITE LIGHTING
400 THOMPSON AVE
MOUNTAIN VIEW, CA 94031

**MOUNTAIN VIEW
WHISMAN SCHOOL
DISTRICT**
1400 MONTECITO AVE
MOUNTAIN VIEW, CA 94031
(925) 536-0500

HA HAMILTON
& AITKEN
ARCHITECTS
200 BRANHAM STREET STE 300
SAN FRANCISCO, CA 94103
www.hamiltonaitken.com

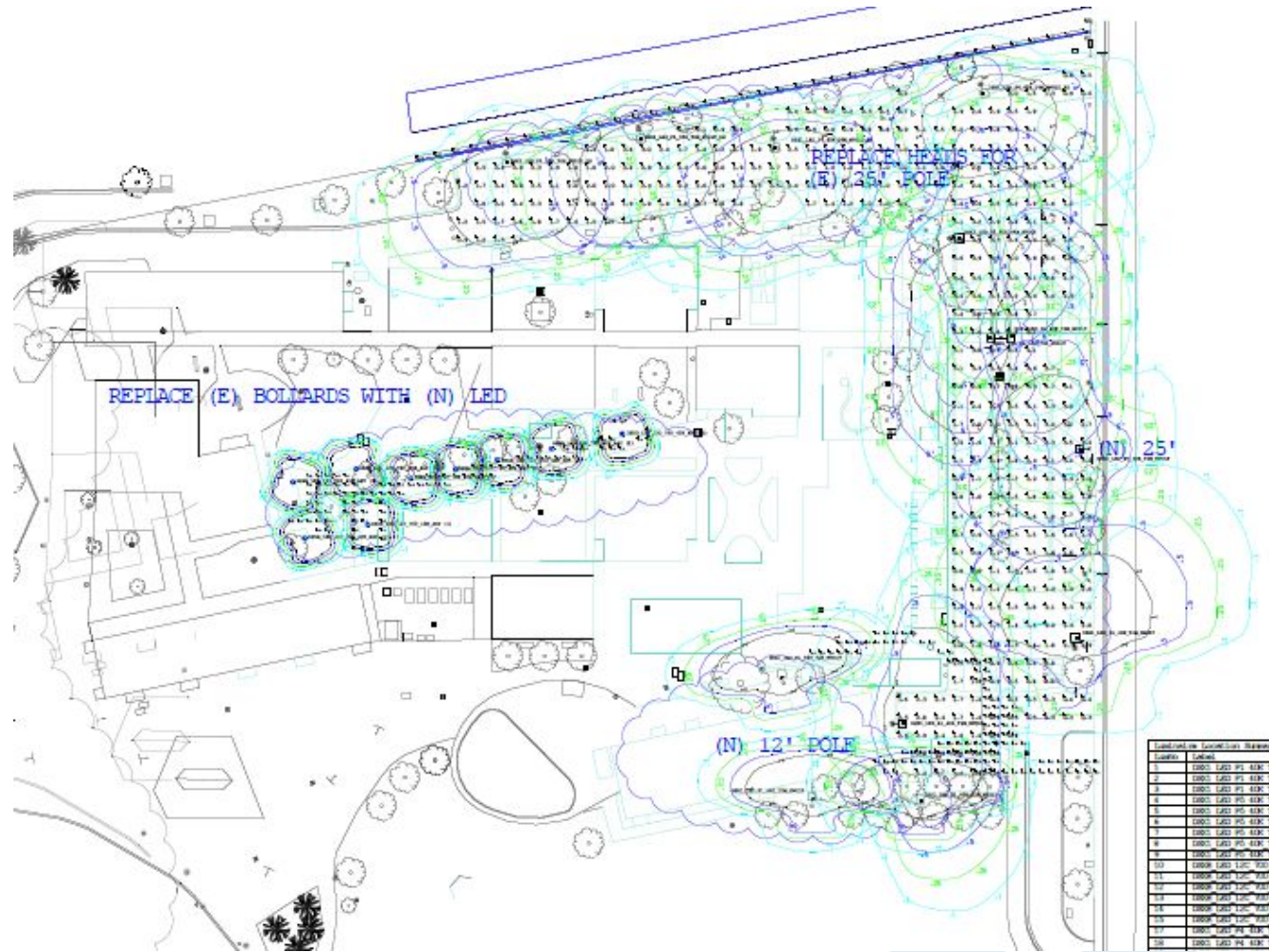
AE AETHEON
Engineering
11500 RIVERVIEW DRIVE
SAN FRANCISCO, CA 94115
PH: (415) 971-1111 FAX: (415) 971-1111
www.aetheon.com

NO.	DESCRIPTION	DATE

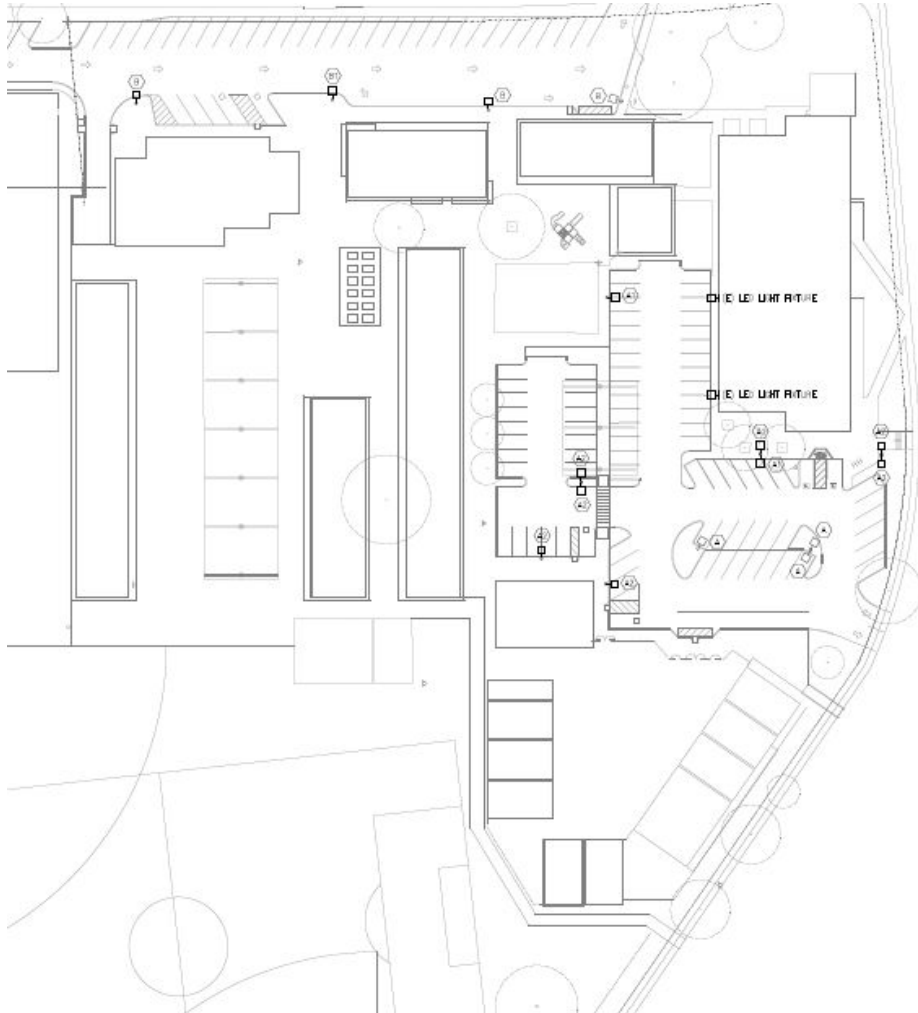
THE DRAWING, DESIGN AND INFORMATION CONTAINED ON THIS SHEET ARE HEREBY OFFERED TO THE CLIENT BY THE ENGINEER OF RECORD AS A PROFESSIONAL SERVICE AND ARE NOT TO BE REPRODUCED OR TRANSMITTED IN ANY FORM OR BY ANY MEANS, ELECTRONIC OR MECHANICAL, INCLUDING PHOTOCOPYING, RECORDING, OR BY ANY INFORMATION STORAGE AND RETRIEVAL SYSTEM, WITHOUT THE WRITTEN PERMISSION OF HAMILTON & AITKEN ARCHITECTS.

KEY PLAN
DRAWING TITLE
SITE LIGHTING PLAN

Monta Loma Elementary School - Isocurve Diagram



Stevenson Elementary School - Site Lighting Plan

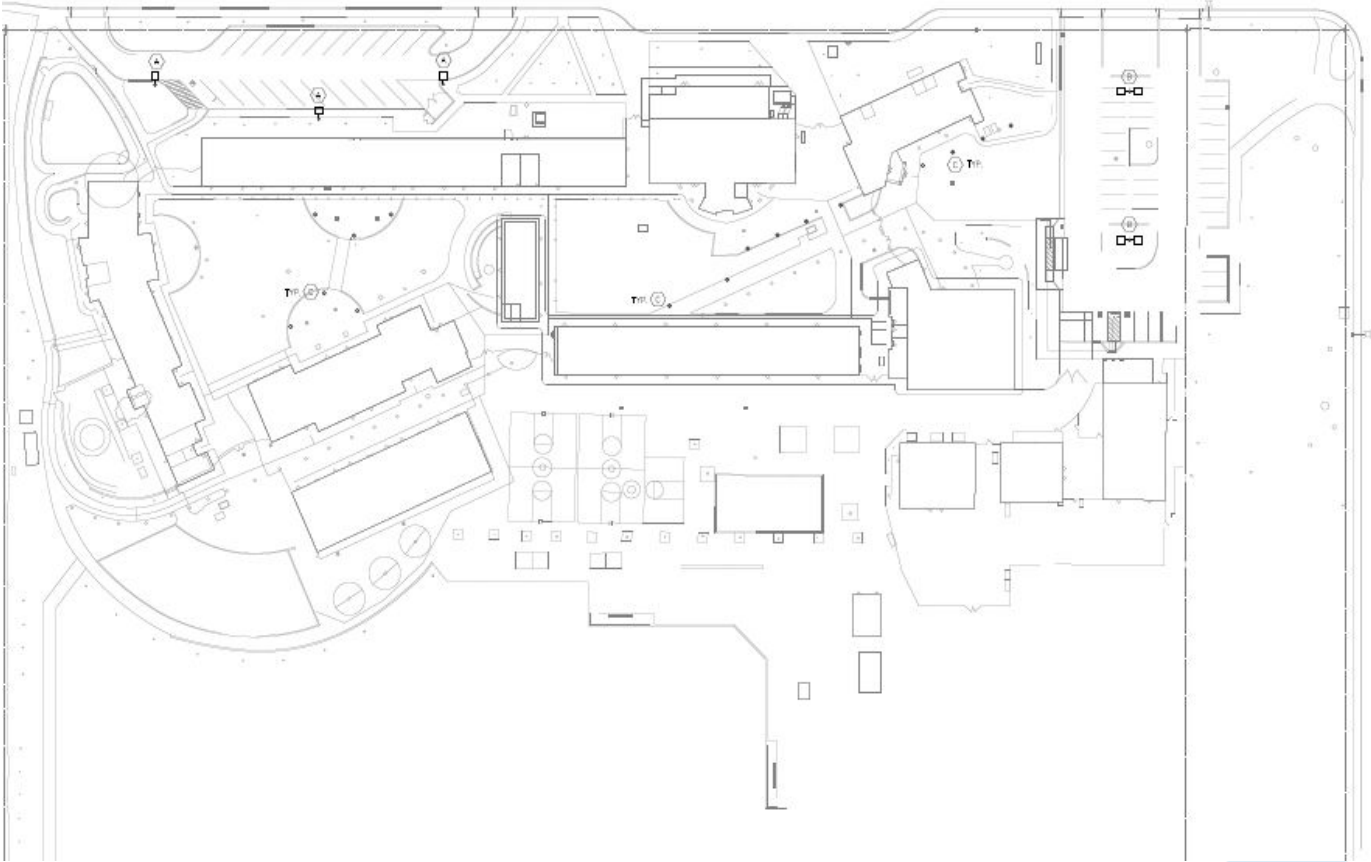


<p>STEVENSON ELEMENTARY SCHOOL SITE LIGHTING 730 PIERRE WAY MOUNTAIN VIEW, CA 94040</p>		
<p>MOUNTAIN VIEW WHISMAN SCHOOL DISTRICT 1400 MONTECITO AVE. MOUNTAIN VIEW, CA 94043 (925) 538-3800</p>		
<p>HA HAMILTON + AIKEN ARCHITECTS 435 BRANNAN STREET STE 405 SAN FRANCISCO, CA 94103 P: 415 573-4328 www.hamilton-aiken.com</p>		
<p>AC ABRONIC CONSULTANTS, INC. 151 CALIFORNIA ST. #1310 SAN FRANCISCO, CA 94111 P: 415 398-4200 www.abronic.com</p>		
<p>Consultant</p>		
NO.	DESCRIPTION	DATE
<p><small>THIS DRAWING, DESIGN AND INFORMATION CONTAINED HEREON IS THE PROPERTY OF HAMILTON + AIKEN ARCHITECTS. NO PART OF THIS DRAWING IS TO BE REPRODUCED, COPIED, OR TRANSMITTED IN ANY FORM OR BY ANY MEANS, WITHOUT THE WRITTEN PERMISSION OF HAMILTON + AIKEN ARCHITECTS. © 2013 HAMILTON + AIKEN ARCHITECTS.</small></p>		

Stevenson Elementary School - Isocurve Diagram



Theuerkauf Elementary School - Site Lighting Plan



**THEUERKAUF
ELEMENTARY
SCHOOL**

SITE LIGHTING

1825 SAN JULIS AVE.
MOUNTAIN VIEW, CA 94035

**MOUNTAIN VIEW
WHISMAN SCHOOL
DISTRICT**

1400 MONTECITO AVE.
MOUNTAIN VIEW, CA 94035
(925) 526-3500

HA HAMILTON
+ AITKEN
ARCHITECTS
100 WASHINGTON STREET, STE 400
SAN FRANCISCO, CA 94102
T: 415 675 5200
www.hamiltonaitken.com

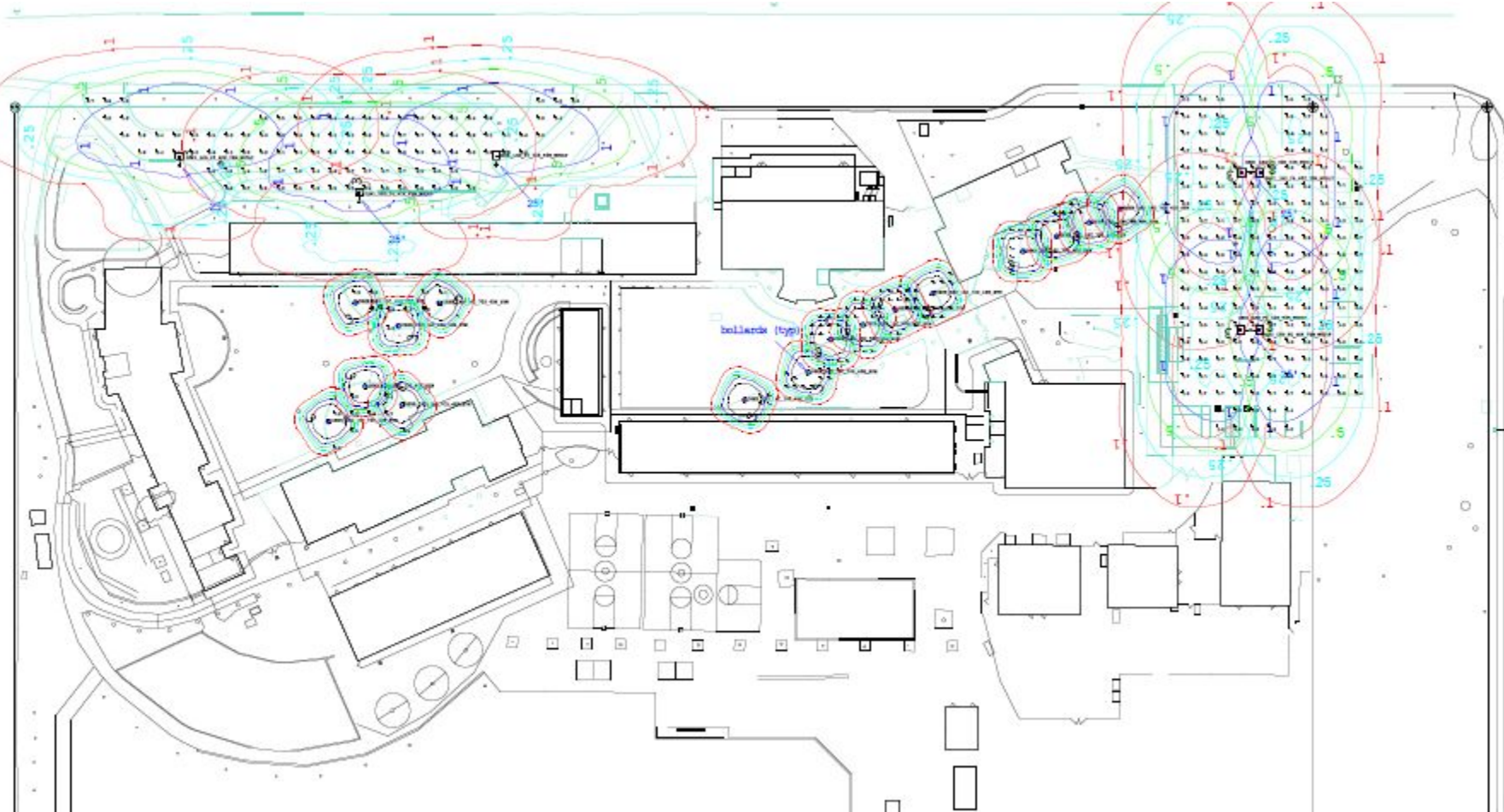

**Allison Engineering
Consultants, Inc.**
11111 11th St., Suite 111
Mountain View, CA 94035
Tel: (925) 526-3500
Fax: (925) 526-3500

Consultant

NO.	ISSUED FOR	DATE

THE DRAWING, DESIGN AND INFORMATION CONTAINED ON THIS SHEET ARE PREPARED FOR USE BY THE PROJECT OR BY THE CONTRACTOR OF SERVICE AND REMAIN THE PROPERTY OF HAMILTON+AITKEN ARCHITECTS. REVISIONS ARE SUBJECT TO ALL APPLICABLE LAWS, STATUTES AND REGULATORY ORDERS, INCLUDING CALIFORNIA'S ENVIRONMENTAL IMPACT STATEMENT ACT AND HAMILTON+AITKEN ARCHITECTS.

Theuerkauf Elementary School - Isocurve Diagram





Mountain View
Whisman
School District

Proposed Budget

Schematic Design Budget

#	Description	Quantity	Unit	Unit \$	Total
1	Bubb LED Area Luminaire	22	ea	\$ 18,500	\$ 407,000
2	Bubb LED Bollard	3	ea	\$ 12,500	\$ 37,500
3	Castro / Mistral LED Area Luminaire	21	ea	\$ 18,500	\$ 388,500
4	Castro / Mistral LED Bollard	10	ea	\$ 12,500	\$ 125,000
5	Crittenden LED Area Luminaire	19	ea	\$ 18,500	\$ 351,500
6	Crittenden LED Bollard	3	ea	\$ 12,500	\$ 37,500
7	Graham LED Area Luminaire	17	ea	\$ 18,500	\$ 314,500
8	Huff LED Area Luminaire	13	ea	\$ 18,500	\$ 240,500
9	Landels LED Area Luminaire	9	ea	\$ 18,500	\$ 166,500
10	Monta Loma LED Area Luminaire	12	ea	\$ 18,500	\$ 222,000
11	Monta Loma LED Bollard	8	ea	\$ 12,500	\$ 100,000
	Stevenson / District Office Replace Existing				
12	Fixture with LED	16	ea	\$ 2,500	\$ 40,000
13	Theuerkauf LED Area Luminaire	5	ea	\$ 18,500	\$ 92,500
14	Theuerkauf LED Bollard	12	ea	\$ 12,500	\$ 150,000
15	Anticipated bid amount	1	ls	\$	2,673,000

Project Cost					
	Description	Quantity		Unit Cost	Subtotal
	Construction Budget	1	ls	\$	2,673,000
	Design Contingency	5	%	\$	133,650
	Construction Contingency	10	%	\$	267,300
	Architect Fees	1	ls	\$ 259,500	\$ 259,500
	Architect Contingency	1	ls	\$	26,730
	Architect Reimbursable Expenses	1	ls	\$	7,785
	Photometric Survey	1	ls	\$	28,288
	Blueprinting	1	ls	\$	5,000
	Topographic Survey	1	ls	\$ 15,000	\$ 15,000
	Soils Report & Testing	0.5	%	\$	13,365
	CM Fees	4.5	%	\$	120,285
	DSA Inspector	3	mos.	\$ 15,000	\$ 45,000
	Testing Laboratory	1	%	\$	26,730
	Bid Advertisements	1	ls	\$	2,500
	DSA Fees	1.2	%	\$ 3,073,950	\$ 36,887
	CGS Fees	9	ea	\$ 3,600	\$ 32,400
	CEQA	1	ls	\$ 15,000	\$ 15,000
	Legal	1	ls	\$ 5,000	\$ 5,000
	Misc. Expenses	1	ls	\$ 10,000	\$ 10,000
	Grand Total			\$	3,723,420



Mountain View
Whisman
School District

Schedule

Schedule

Task Name	Duration	Start	Finish
Site Lighting	374 days	Mon 9/7/20	Thu 2/10/22
Photometric Study	10 days	Mon 9/7/20	Fri 9/18/20
Schematic Design	140 days	Mon 11/16/20	Fri 5/28/21
BOT Info SD Approval	1 day	Thu 6/3/21	Thu 6/3/21
BOT Action SD Approval	1 day	Thu 6/17/21	Thu 6/17/21
Construction Documents	40 days	Fri 6/18/21	Thu 8/12/21
DSA Review (Access Only)	30 days	Fri 8/13/21	Thu 9/23/21
Bid & Award	35 days	Fri 9/24/21	Thu 11/11/21
Construction	65 days	Fri 11/12/21	Thu 2/10/22



Mountain View
Whisman
School District

Thoughts and Questions