



Mountain View  
Whisman  
School District

# Community Restroom Process Summary and Recommendations

June 3, 2021

# Where are We Now

# Guiding Information

- Safety of students and staff
  - Feedback during the Master Facilities Planning process indicated that for safety reasons, public adult restrooms should not be shared with students.
- Additionally, the restrooms provide convenience for city residents.
- Having separate restrooms will make it easier to maintain cleanliness and provide more durable finishes for public use.

# Collaboration with the City and MVPD

- Collaboration around restroom standards with Parks and Recreation (sink, flooring, stalls).
- Discussions about placement to ensure ease of cleaning and a location that is good for residents with Parks and Recreation.
- Possible placement of restroom was reviewed by MVPD for safety.
  - To date there have not been significant issues reported with public restrooms on campuses.

# Process Overview

- April 1
  - Staff presented the process to the Board and offered to present to City Council/Parks and Recreation
- April-May
  - Community feedback. Meetings with the larger community as well as school site community
- June 3
  - Staff will present feedback from the community to the Board of Trustees
  - Tentatively staff will present or provide a report to City Council on feedback received.
- June 17
  - Staff will present schematic designs, budget, and timeline for Board approval.

# Methods of Notification for Community Meetings

- Postcards were directly mailed to residents
- Posters hung at each site with links and QR codes to register for meetings
- Social media posts
- Notification to the City
- School newsletters
- Marquee sign announcements



Mountain View  
Whisman  
School District

# The Design Process

# Design Considerations

- Proximity to sewer and power lines
- Ease of use by community
- Accessibility for cleaning and maintenance
- Safety of students and community members
- Accessible path of travel



# Hours of Use and Other Information

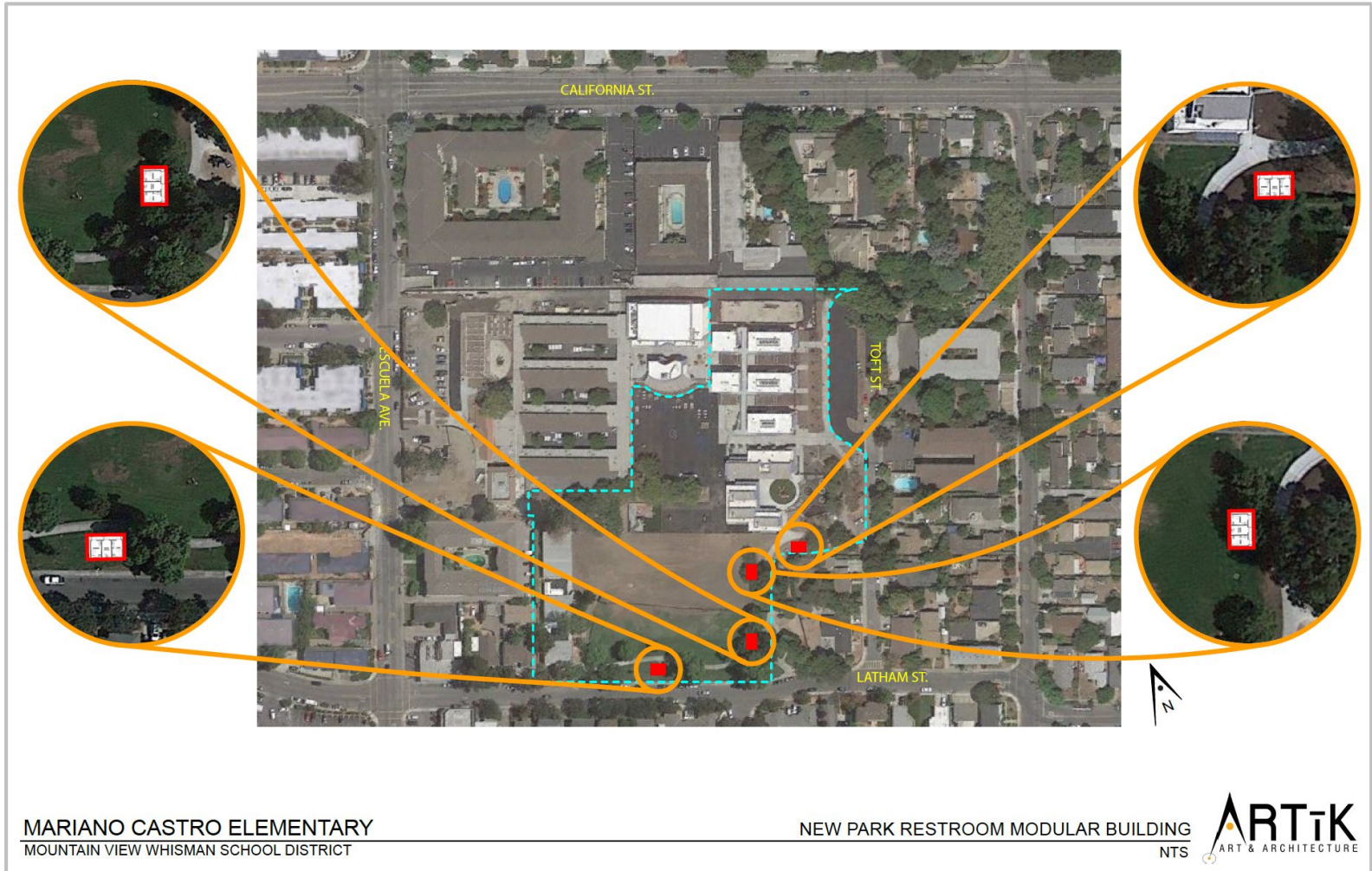
- The hours of use for the restrooms will follow City policy.
  - Restrooms will be available for use after school hours and weekends (4pm to sunset).
  - Restrooms will have City standard locks that automatically lock and unlock at the appropriate times.
  - The City will maintain the restrooms



Mountain View  
Whisman  
School District

# Castro/Mistral

# Possible Locations - Castro/Mistral



# Feedback from Community Meeting

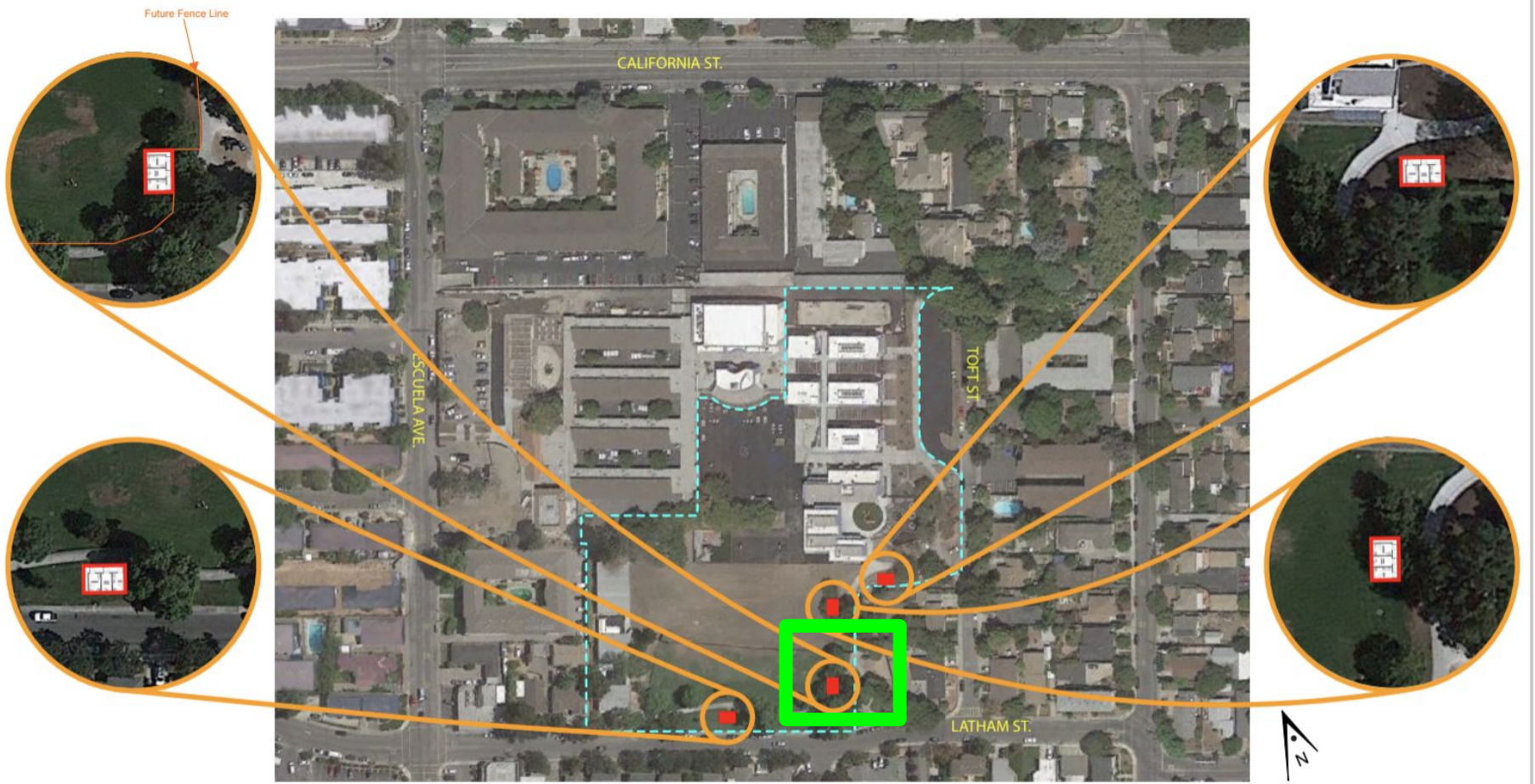
- Two individuals participated in the community meeting.
- One individual had questions about why students and the public could not use the same restroom and there was no feedback given on location etc. Question about City contribution to building the restroom.
- The second person that joined was a school community member and planned to attend a school meeting to give feedback.

# Feedback School Meetings

- Castro staff/community prefer the location near the tot lot.
- Castro staff/community have a safety concern about the restroom closest to the school due to line of sight
- Preschool prefers the two locations near the tot lot

# Feedback School Meetings

- Mistral staff/community prefer the location near the tot lot or near Latham.
- Preference for the restrooms to be considered separate from the school
- At this location it may best for the door to face the tot lot because of the slope on the other side. This would need to be addressed during design.



**MARIANO CASTRO ELEMENTARY**  
MOUNTAIN VIEW WHISMAN SCHOOL DISTRICT

**NEW PARK RESTROOM MODULAR BUILDING**  
NTS





Mountain View  
Whisman  
School District

# Landels



# Possible Locations - Landels

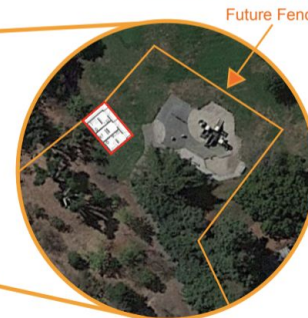
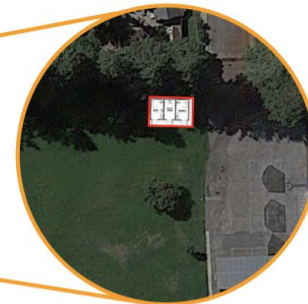


# Landeles Community Feedback

- Four individuals participated in community feedback meeting
- Preference for gender neutral restrooms
- Preference to have the restrooms face the fields to watch children going in and out
- Group was split on where to place the restroom. One individual wanted both restrooms.
- The group was split on adding a diaper changing table

# Landels School Feedback

- Gender neutral restrooms preferred by all
- Facing the field preferred by all
- Most wanted the restroom near the trail and small park. Some wanted it on the field side.
- Requested signage for when restrooms would be open
- Water station for humans and dogs
- Request for poop bags for dogs
- Preference for the first and third option for the design



For cleaning access by the City the location near the park will not work. In response to community concerns we will move the restroom farther away from the entrance by at least 20 feet.

LANDELS ELEMENTARY  
MOUNTAIN VIEW WHISMAN SCHOOL DISTRICT

NEW PARK RESTROOM MODULAR BUILDING  
NTS



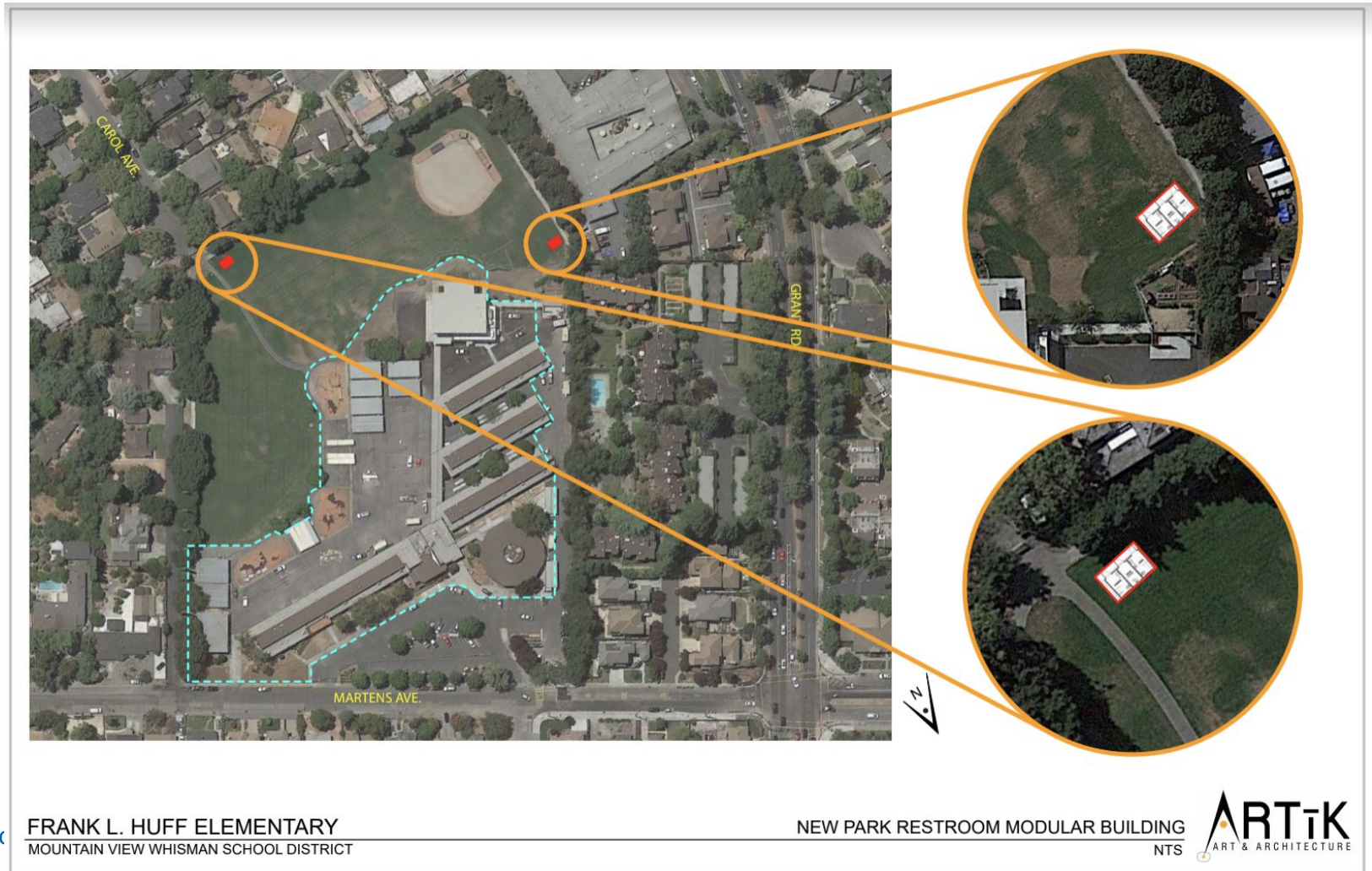
Mountain View Whisman School District



Mountain View  
Whisman  
School District

# Huff

# Possible Locations - Huff



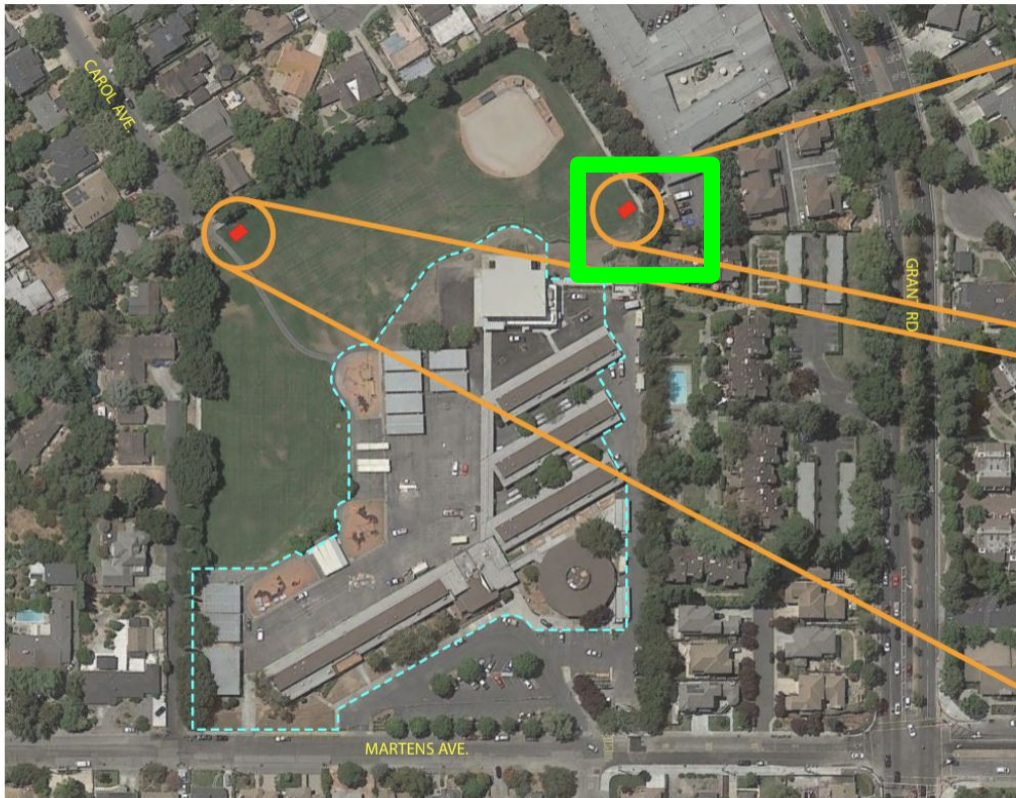
# Huff Community Feedback

- There were two individuals that participated in the Huff community meeting.
- Gender neutral or family restrooms were preferred
- Water fountain with bottle filler was requested
- General preference for the location near the baseball diamond

# Feedback from Huff

- Preference for the location near the baseball diamond
- Concern about who was going to clean the restrooms
- Keeping restrooms locked during school hours
- Parents are happy about getting them but would like to know how the City is participating.





FRANK L. HUFF ELEMENTARY  
MOUNTAIN VIEW WHISMAN SCHOOL DISTRICT

NEW PARK RESTROOM MODULAR BUILDING  
NTS





Mountain View  
Whisman  
School District

# Possible Designs

# Possible Designs for Restrooms

## Option #1



Mountain View Whisman School District

# Possible Designs for Restrooms

## Option #2



# Possible Designs for Restrooms

## Option #3





Mountain View  
Whisman  
School District

# Recommendations

# Recommendations

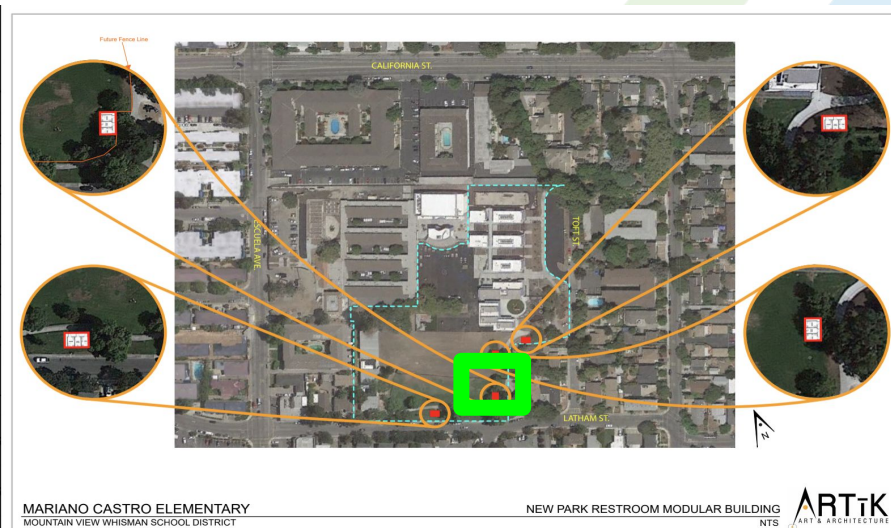
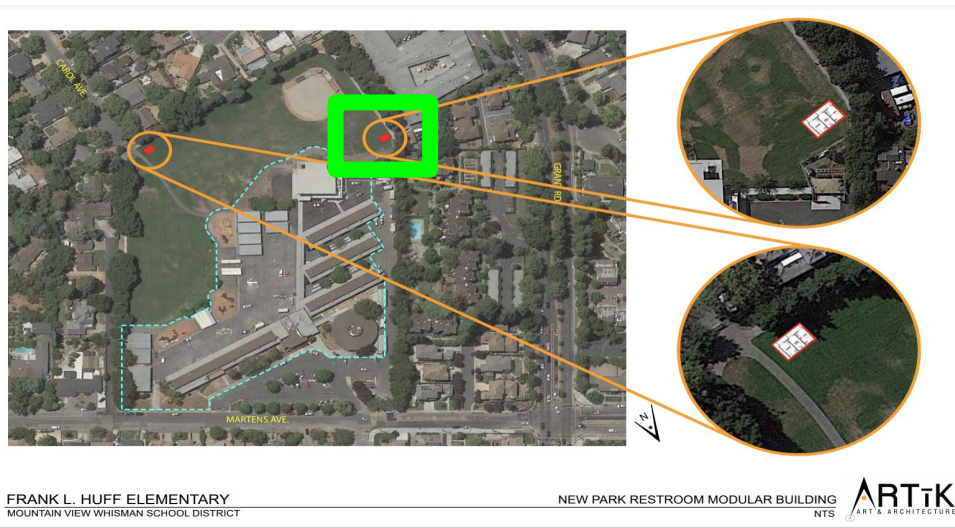
- Gender neutral restrooms
- Facing the field
- Signage that indicates hours of use
- Water fountain with bottle filler
- Design #1 (on next slides)
- Locations indicated on next slide based on feedback



Landels

Huff

Castro/Mistral





# Option #1



Mountain View Whisman School District



Mountain View  
Whisman  
School District

# Thoughts, Feedback, and Questions