



Mountain View  
Whisman  
School District

# Measure T Phase 1 Construction Update

May 6, 2021



Mountain View  
Whisman  
School District

# Strategic Plan 2021

# Strategic Plan

## Goal 5: Resource Stewardship

**Strategy 5.1b:** The District will maintain facilities in good repair.



Mountain View  
Whisman  
School District

# Update: Measure T Budget Summary

# Measure T - Summary

## Measure T Bond Summary

Series A Bonds Issued	\$ 85,000,000
Interest Income Projection	\$ 550,000
Trustee Deposit	<u>\$ 19,902</u>
Remaining Bond Authorization	<u>\$ 174,000,000</u>
Total Revenues in Fund 212	<u>\$ 259,569,902</u>

---

Project Expenditures as of 1/31/2020	\$ 39,358,290
Encumbrances Remaining (Contracts)	<u>\$ 10,795,853</u>
Total Commitments	\$ 50,154,143
Budget Remaining for Current Projects	<u>\$ 209,415,759</u>
Total Current Project Budgets	<u>\$ 259,569,902</u>

# Measure T: Budget Allocation Summary - By Campus

## Measure T Financial Summary Breakdown of Improvements by Campus

Site Code	Site	Total Budget	Encumbered ⓘ	Expenditures	Remaining Budget ⓘ	Encumbered Balance
001	District Office **	\$1,171,361.50	\$522,524.22	(\$29,854.36)	\$648,837.28	\$492,669.86
002	Bubb	\$7,074,056.00	\$768,309.98	(\$47,422.66)	\$6,305,746.02	\$720,887.32
003	Castro	\$2,398,045.00	\$464,861.03	(\$33,253.92)	\$1,933,183.97	\$431,607.11
004	Huff	\$7,701,625.00	\$830,222.02	(\$47,736.97)	\$6,871,402.98	\$782,485.05
005	Landels	\$32,642,253.00	\$869,595.85	(\$52,150.31)	\$31,772,657.15	\$817,445.54
006	Monta Loma	\$8,827,272.00	\$965,116.25	(\$58,019.03)	\$7,862,155.75	\$907,097.22
007	Vargas	\$3,492,478.00	\$650,159.09	(\$28,048.07)	\$2,842,318.91	\$622,111.02
008	Theuerkauf	\$9,608,063.00	\$1,450,237.68	(\$73,960.19)	\$8,157,825.32	\$1,376,277.49
009	Districtwide	\$152,937,787.00	\$38,809,655.78	(\$38,698,906.63)	\$114,128,131.22	\$110,749.15
011	Crittenden	\$9,727,263.00	\$1,175,896.07	(\$66,627.13)	\$8,551,366.93	\$1,109,268.94
014	Graham	\$11,921,264.00	\$1,870,109.90	(\$99,193.97)	\$10,051,154.10	\$1,770,915.93
015	Stevenson	\$2,739,664.50	\$983,009.04	(\$79,605.99)	\$1,756,655.46	\$903,403.05
016	Mistral	\$9,210,806.00	\$794,445.94	(\$43,511.17)	\$8,416,360.06	\$750,934.77
025	Preschool - Montecito	\$117,964.00	\$0.00	\$0.00	\$117,964.00	\$0.00
<b>Allocated Budget</b>		<b>\$259,569,902.00</b>	<b>\$50,154,142.85</b>	<b>(\$39,358,290.40)</b>	<b>\$209,415,759.15</b>	<b>\$10,795,852.45</b>

\*\* District Office Project Costs for Solar, Lighting, HVAC, Cameras

# Measure T - Board Approved Project List

Project Code	Project	Total Budget	Encumbered ⓘ	Expenditures	Remaining Budget ⓘ	Encumbered Balance
0700	Program Support Costs	\$2,619,657.40	\$937,075.16	(\$469,199.22)	\$1,682,582.24	\$467,875.94
0701	Construction Program Management	\$19,062.90	\$19,062.90	(\$19,062.90)	\$0.00	\$0.00
0702	COP Debt Repayment	\$38,253,517.72	\$38,253,517.72	(\$38,253,517.72)	\$0.00	\$0.00
0707	Classroom/Building - New	\$24,778,720.00	\$0.00	\$0.00	\$24,778,720.00	\$0.00
0708	Classroom/Building - Modernization	\$3,030,115.00	\$289,615.00	(\$8,450.44)	\$2,740,500.00	\$281,164.56
0710	Program Contingency	\$34,450,000.00	\$0.00	\$0.00	\$34,450,000.00	\$0.00
0714	Paving Project	\$297,970.00	\$0.00	\$0.00	\$297,970.00	\$0.00
0715	Districtwide Unallocated	\$17,995,548.98	\$0.00	\$0.00	\$17,995,548.98	\$0.00
0723	Furniture/Fixtures/Equipment	\$1,250,000.00	\$0.00	\$0.00	\$1,250,000.00	\$0.00
0727	Solar Program	\$16,715,000.00	\$9,193,433.00	(\$430,782.67)	\$7,521,567.00	\$8,762,650.33
0731	Fencing	\$2,742,956.00	\$216,634.59	(\$120,570.47)	\$2,526,321.41	\$96,064.12
0732	Lighting	\$3,114,375.00	\$297,788.00	(\$33,053.00)	\$2,816,587.00	\$264,735.00
0733	HVAC	\$19,337,576.00	\$227,411.48	(\$18,901.48)	\$19,110,164.52	\$208,510.00
0734	Outdoor Learning	\$7,978,936.00	\$440,000.00	\$0.00	\$7,538,936.00	\$440,000.00
0735	Window / Window Covering	\$18,657,100.00	\$0.00	\$0.00	\$18,657,100.00	\$0.00
0736	Storage	\$871,156.00	\$0.00	\$0.00	\$871,156.00	\$0.00
0737	Surveillance cameras	\$2,988,312.00	\$0.00	\$0.00	\$2,988,312.00	\$0.00
0738	Park Facilities	\$986,875.00	\$45,600.00	\$0.00	\$941,275.00	\$45,600.00
0739	Paving and Utility work	\$1,668,594.00	\$74,625.00	\$0.00	\$1,593,969.00	\$74,625.00
0740	Plumbing	\$139,375.00	\$0.00	\$0.00	\$139,375.00	\$0.00
0741	New classroom portable	\$421,879.00	\$35,900.00	(\$850.00)	\$385,979.00	\$35,050.00
0742	Electrical upgrade	\$521,215.00	\$48,000.00	\$0.00	\$473,215.00	\$48,000.00
0743	Marquee Sign	\$229,836.00	\$25,150.00	(\$3,385.00)	\$204,686.00	\$21,765.00
0744	Parking lot improvement	\$502,125.00	\$50,330.00	(\$517.50)	\$451,795.00	\$49,812.50
0780	Staff Housing	\$60,000,000.00	\$0.00	\$0.00	\$60,000,000.00	\$0.00
<b>Allocated Budget</b>		<b>\$259,569,902.00</b>	<b>\$50,154,142.85</b>	<b>(\$39,358,290.40)</b>	<b>\$209,415,759.15</b>	<b>\$10,795,852.45</b>



Mountain View  
Whisman  
School District

# Update: Active Measure T Projects



# Perimeter Controls - Project 0731

- Includes addition of fencing and gates to enclose campus and fields for student safety as identified in local and state COVID-19 guidelines.
- Gates to have panic hardware and self-closing hinges. Purpose of fencing is to control points of entry during school hours and will be left unlocked for public access after hours and on weekends.
- All new gates will be on automatic locks so the public can access the fields after hours.
- A Community work group at Monta Loma is meeting discuss options.

# HVAC Replacement and Upgrades -Project 0733



- Replacement of existing equipment Bubba, Huff, Landels, Graham, Theuerkauf, Monta Loma and Crittenden with new split systems.
- New Bard units (in portables) at Graham.
- Upgrade controls system at Graham and Crittenden to bring in line with District standard.
- All existing ductwork to remain.

# HVAC Replacement and Upgrades -Project 0733

- Adding bi-Polar Ionization to all units new and existing units per board direction.
- Due to DSA for rooftop units and design work some sites will be done this summer and others will be completed next summer.

Bubb, Landels, Huff, Mistral, and Graham will be done this summer

# Site Lighting - Project 0732

- New light standards and/or bollard style light post to illuminate path of travel to/from campus and parking lots
- A photometric survey has been done to determine areas of need at each campus.
- Architects are working on designs now.



# Site Lighting - Project 0732

## Community Process

- May 6- Board overview followed by City Council information/presentation
- Community meetings and feedback from school sites (May)
- June-Board discussion and then brought back for final approval

## Your Measure T dollars at work at Bubb Elementary School

### Projects starting this year

**Projects across the district will increase safety for students and staff members, increase operational efficiency and provide for short-term enrollment growth.**

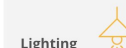


**Solar**  
Bubb will get two solar arrays near the playground structures. Not only will these structures support solar panels to save the district \$600,000 annually in electrical costs, they will provide much-needed shade  
**Project start: Summer 2021**

**MEASURE T PROJECTS  
TOUCH EVERY  
SCHOOL  
SEE [WWW.MVWSD.ORG/  
CONSTRUCTION](http://WWW.MVWSD.ORG/CONSTRUCTION)**



**HVAC**  
Replacement of existing old equipment with new, efficient systems and upgraded controls to increase efficiency.  
**Project start: Summer 2021**



**Lighting**  
New lights and/or bollard style light posts to illuminate pedestrians' path of travel between campus and parking lots. The areas of need are determined by photometric data. This additional lighting is an important safety measure for staff members and guests using the campus in the evenings and winter late afternoons.  
**Project start: Fall 2021**



## LIGHTING INFO MEETING

Learn more about the lighting project

**Tuesday, May 18**

**at 4 p.m.**

**On Zoom:**

**<http://mvw.sd/lighting1>**

# Notification of Community Meetings

- Postcards were directly mailed to residents within each school's boundaries
- Posters at each site with links and QR codes to register for meetings
- Social media posts
- Notification to the City
- School/ Supt newsletters
- Marquee sign announcements

# Toilets - Project 0738

- Purchase and installation of prefabricated, standalone toilet buildings and associated site work at Huff, Landels and Castro/Mistral.
- Toilet room buildings would be concrete or block units. Pricing based on The Public Restroom Company units.
- The units would be maintained by the City and used afterhours.



# Toilets - Project 0738

## Community Process

April 1- Board overview followed by City Council presentation/information

Community meetings and feedback from school sites (late April)

June-Board discussion and then brought back for final approval

**Your Measure T dollars at work at Landels Elementary**

The bond passed in 2020 prioritizes:

- Safety/Operational Efficiency
- Short-Term Growth

To receive future updates about these Measure T projects, please sign up here: <http://mvw.sd/ConstUpdates>

Get in Touch

- facebook.com/MVWSD/
- #MVWSD
- MVWSD.org/construction

MEASURE T PROJECTS  
**TOUCH EVERY SCHOOL**  
SEE [WWW.MVWSD.ORG/CONSTRUCTION](http://WWW.MVWSD.ORG/CONSTRUCTION)

Mountain View Whisman School District  
1400 Montecito Ave.  
Mountain View, CA 94043

PSRRT STD  
U.S. POSTAGE  
PAID  
SAN JOSE, CA  
PERMIT 1206

## Your Measure T dollars at work at Landels Elementary School

### Projects starting this year

**Solar**  
Landels will get two solar arrays near the playground structures. Not only will these structures support solar panels to save the district \$600,000 annually in electrical costs, they will provide much-needed shade  
**Project start: Summer 2021**

**Lighting**  
New lights and/or bollard style light posts to illuminate pedestrians' path of travel between campus and parking lots. The areas of need are determined by photometric data. This additional lighting is an important safety measure for staff members and guests using the campus in the evenings and winter late afternoons.  
**Project start: Fall 2021**



**Public Restrooms**  
Installation of standalone toilet buildings. The units would be maintained by the City and may be used after hours by the public. This is an important security measure to ensure adults are not mixing with children in student restrooms. The restroom building will be placed close to the edge of the field, near water and sewer access. Exact location to be determined.  
**Project start: Fall 2021**

**HVAC**  
Replacement of existing old equipment with new, efficient systems.  
**Project start: Summer 2021**

### LIGHTING INFO MEETING

Learn more about the lighting project  
**Tuesday, May 18 at 4 p.m.**  
**On Zoom:**  
<http://mvw.sd/lighting1>

### RESTROOM INFO MEETING

Learn more about the restroom project  
**Wednesday, April 21 at 4 p.m.**  
**On Zoom:**  
<http://mvw.sd/RR2>



# Toilets Feedback Process Update

- Landels meeting held on April 21, four individuals in attendance
- Huff meeting held on April 20, two individuals in attendance
- Castro/Mistral meeting held on April 22, two individuals attended
- Feedback from school site meetings is still in process

# Paving and Utility Work - Project 0739

- Castro Elementary School - removal of existing pedestrian rated paving adjacent to the existing 2 story classroom building and installation of new vehicular rated paving section and parking space striping and associated signage. 7,000 SF in total.
- Theuerkauf – demolition and repaving of 20,000 SF parking areas along San Luis Avenue.
- Theuerkauf - asphalt overlay and restriping of existing play areas - 60,000 SF.
- Theuerkauf - Removal of debris in storm drain as indicated by camera investigation. Replacement is not needed. Areas identified by MOT as problematic.

# Paving and Utility Work - Project 0739

- Monta Loma - Removal of debris in storm drain as indicated by camera investigation. Replacement is not needed (Between MUR and kinder classroom wing).
- Crittenden - Removal of debris in storm drain as indicated by camera investigation. Replacement is not needed.

# Paving and Utility Work - Project 0739

## Castro and Theuerkauf



# Solar - Project 0727

- In May 2020 the district and Engie met with all school sites to get feedback on the design and placement of the solar arrays
- Engie will start construction of the stand alone arrays in summer 2021.
- Rooftop arrays will be completed in 2022 due to the DSA approval process.

# Solar - Project 0727

## Example of Placement

Huff



# Solar - Project 0727

## Example of stand alone array



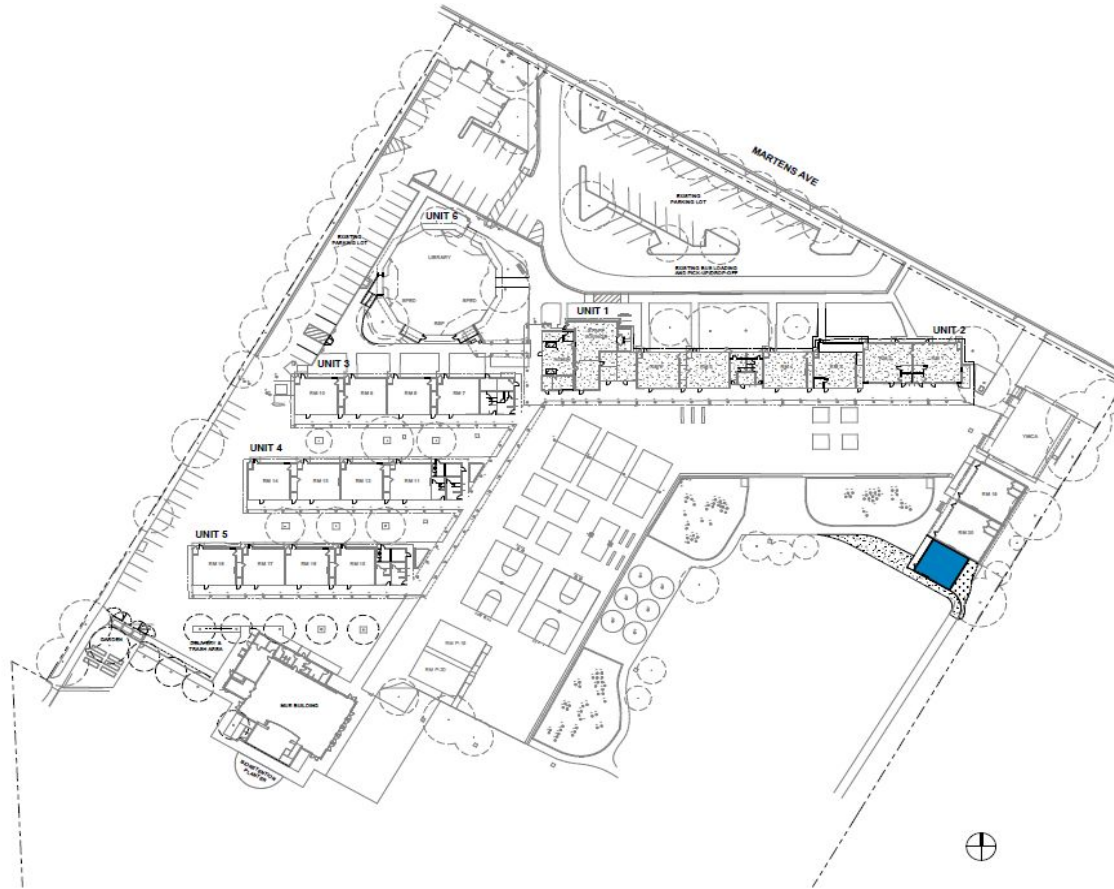
Mountain View Whisman School District

# Huff Portable - Project 0741

- Installation of one (1) 960 SF standard classroom portable on a permanent concrete foundation including associated sitework and landscaping.
- Standard classroom finish with whiteboard wall, casework, and sink and Front Row audio-visual system.



# Huff Portable Location



Frank L. Huff Elementary School  
New Portable  
Mountain View Whisman School District

12/09/20

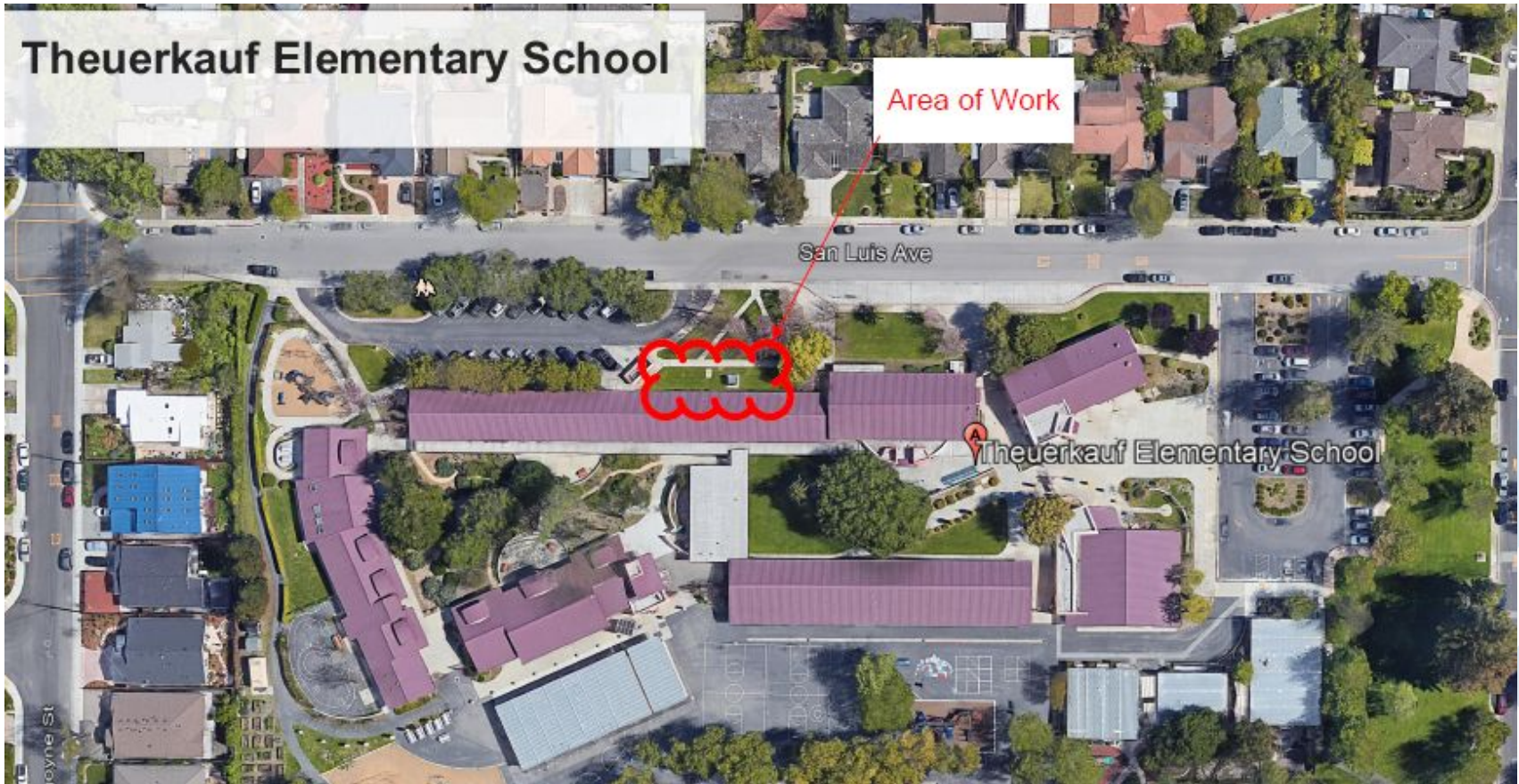
HIBSER YAMAUCHI  
Architects, Inc.



# Electrical Upgrades - Project 0742

- Theuerkauf - Installation of new 2000-amp main switchboard to eliminate existing switchboard located in building C. Location of new equipment would be exterior adjacent to San Luis Ave.
- Block wall enclosure with ornamental metal gate around electrical equipment.

# Theuerkauf Elementary School Area of Work



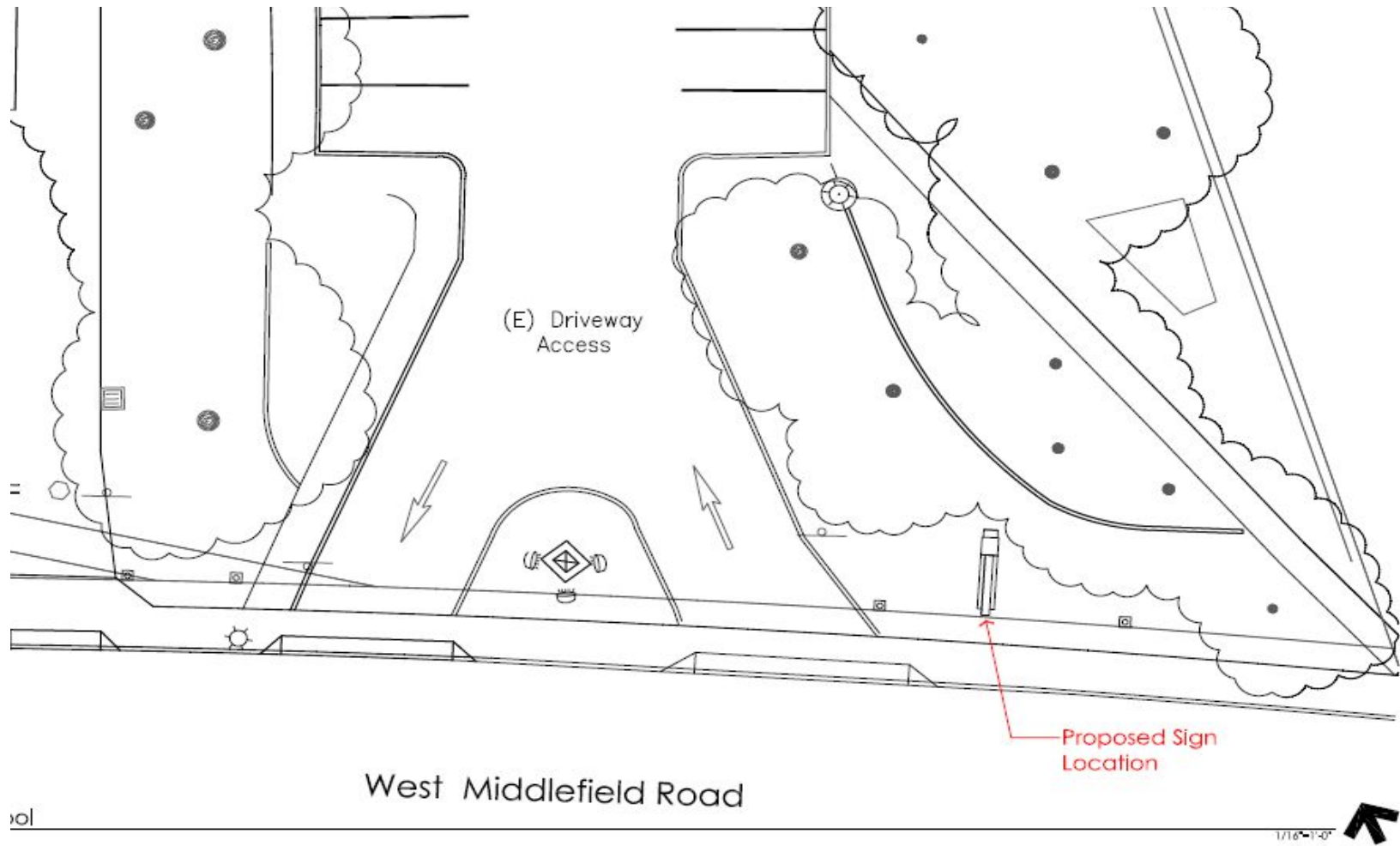
# Electrical Upgrades - Project 0742

- Crittenden: Installation of new main breaker and distribution breakers in existing switchboard.

# Marquee Signs - Project 0743

- Installation of a marquee at the backside of Crittenden off of Middlefield Rd. Many parents use the back entrance for drop-off. This would allow increased communication to parents and the public.
- During construction of Vargas, the City moved the light pole at Vargas which then impacted the placement of the Vargas marquee sign. A new sign will be placed at Vargas and the old base will become a static sign (similar to the one at the DO).

# Marquee Signs - Project 0743 - Crittenden Middle School



101

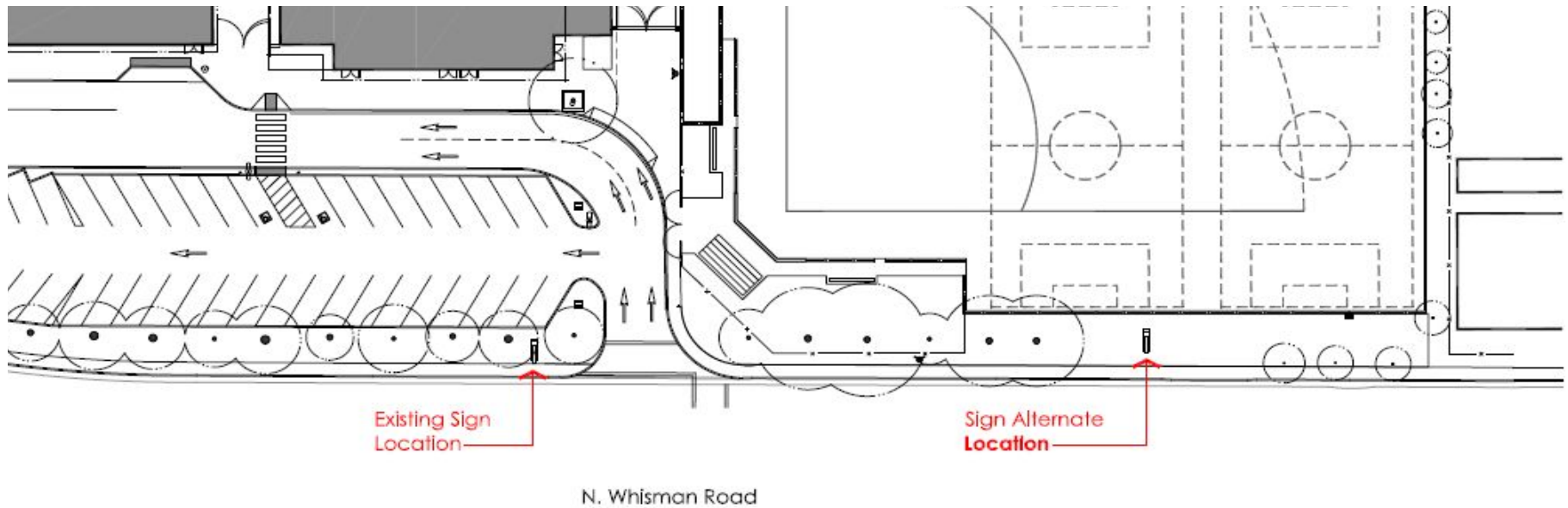
N

Crittenden Monument Sign  
New Monument Sign Location  
01/04/2021

# Rendering - Crittenden Middle School



# Marquee Signs - Project 0743 - Vargas Elementary School





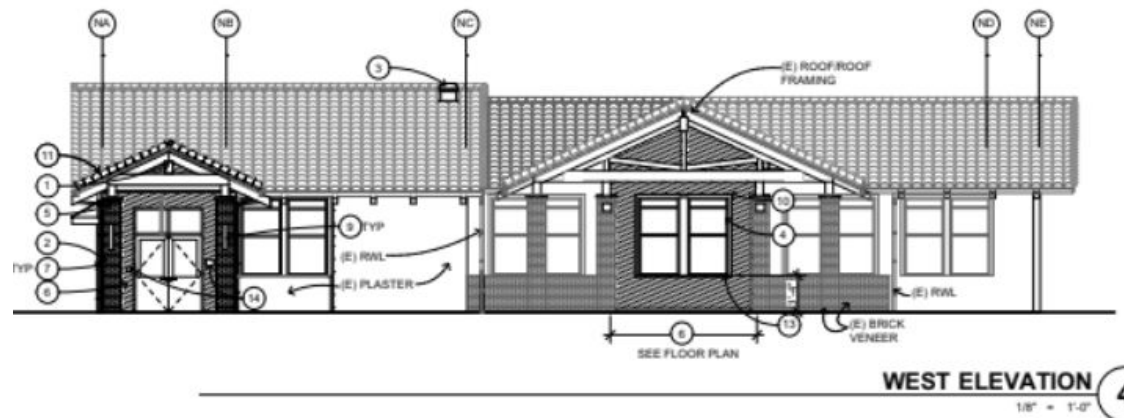
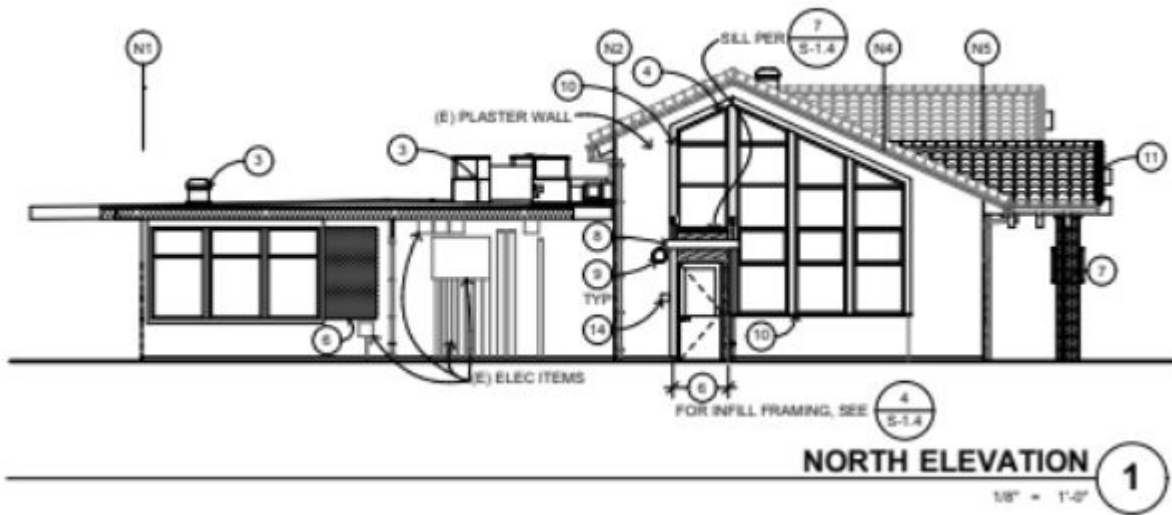
# Rendering - Vargas Elementary School



# Classroom/Building Modernization - Project 0708-Mistral's Front Office

- Mistral's front office is a carryover from Measure G.
- Includes a reconfiguration of the office, teacher work space, and nurses room. New bathrooms as well and a new conference room.
- Relocate the Main Data Frame to an exterior pre-cast building.

# Mistral Office



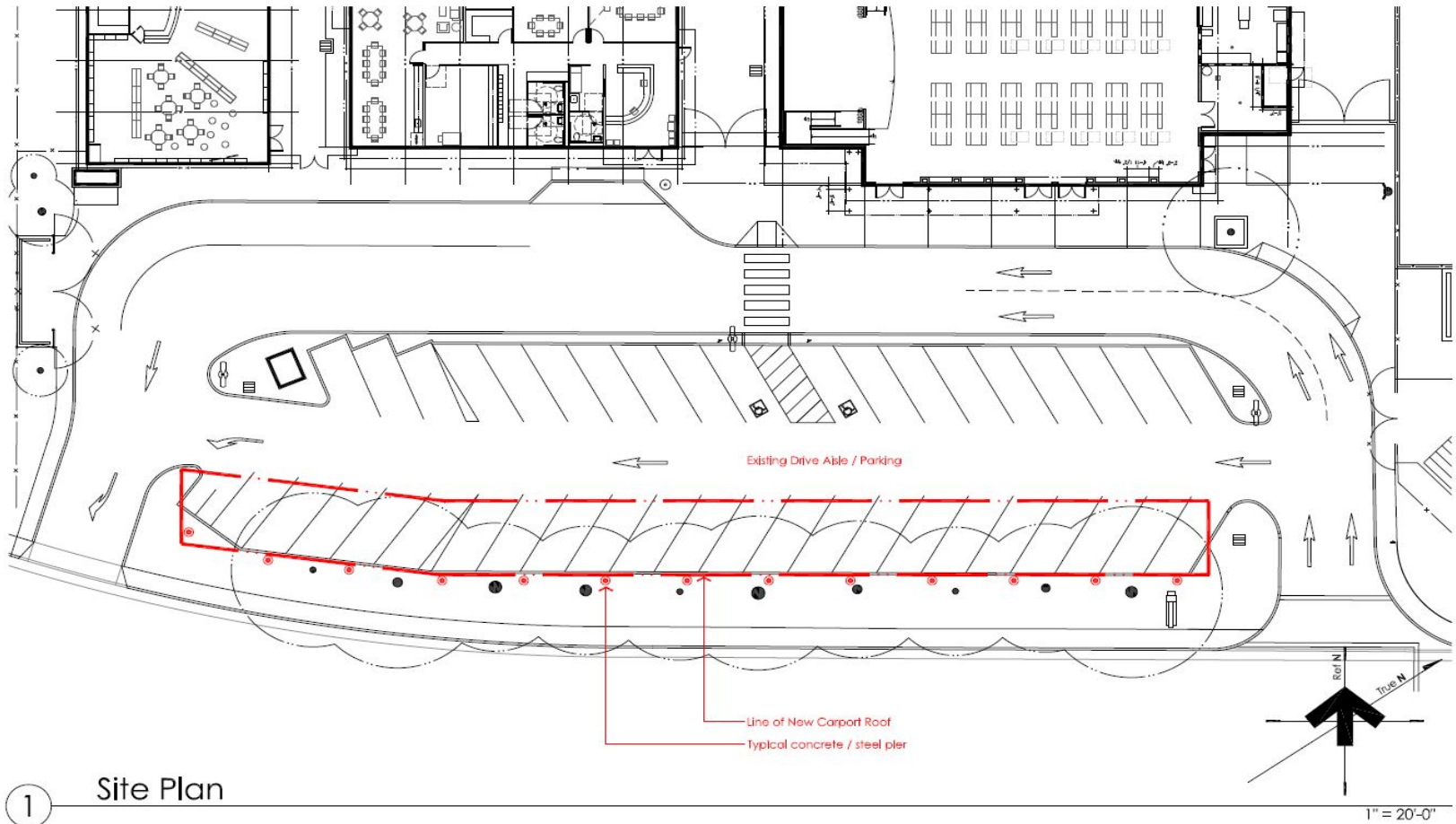
# Parking Lot Improvement - Project 0744

## Vargas Parking Cover

- The trees along N. Whisman Rd. drop pine cones on cars and are a danger to people.
- A parking cover would protect people and cars and would allow the district to keep the trees.
- We are funding this due to non-escalation of construction costs..



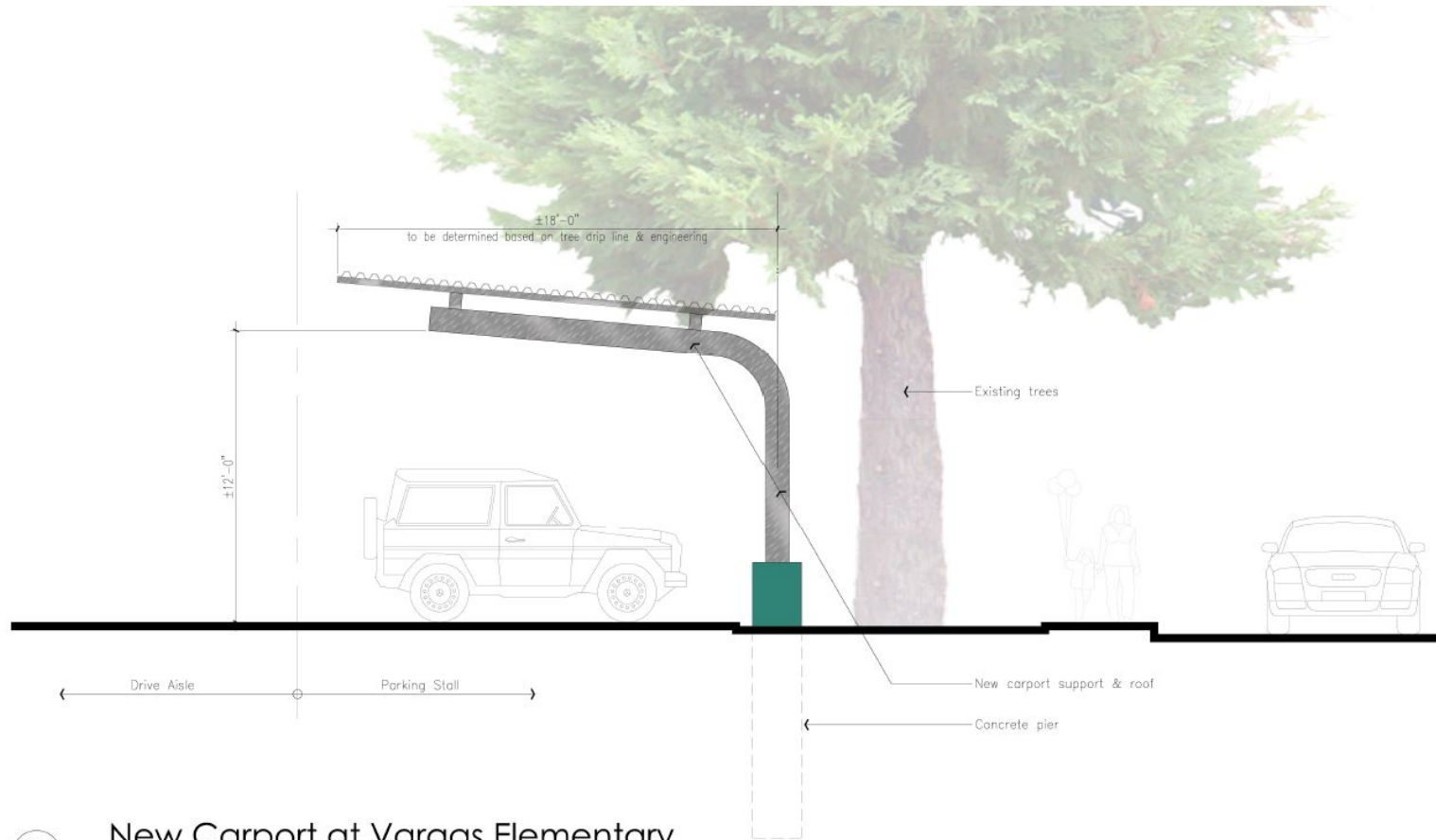
# Vargas Elementary School Parking Cover - Site Plan



1 Site Plan

DTA Drilling Ferrones Architecture Inc.  
Architecture | Infrastructure | Environments

# Vargas Elementary School Parking Cover - Elevation



1 New Carport at Vargas Elementary

1/4" = 1'-0"

DTA Dreiling Terrones Architecture Inc.  
Architecture | Infrastructure | Environments



Mountain View  
Whisman  
School District

# Questions?