



Mountain View
Whisman
School District

Site Lighting Community Process

May 6, 2021

Guiding Principles

Goal 5 Resource Stewardship

- Goal 5: Students, staff and community members will have access to various resources, such as technology, facilities, furniture, equipment, etc., in a fiscally responsible manner, to fulfill the mission of MVWSD.

Guiding Information

- Safety of students and staff
 - Feedback during the Master Facilities Planning process indicated that for safety additional pathway lighting was needed at school sites.

Photometric Survey

- A photometric survey was completed to identify problem areas where more light is needed.
- Vargas did not show a need for additional pathway lighting.
 - We will hold community meeting to determine if there is a need to proceed with additional lighting.
 - Vargas is a newer campus so some lighting had already been installed.



Mountain View
Whisman
School District

Community Process

Notification of Community Meetings

- Postcards were directly mailed to residents within each school's boundaries
- Posters at each site with links and QR codes to register for meetings
- Social media posts
- Notification to the City
- School/ Supt newsletters
- Marquee sign announcements

Community Meetings

- Stevenson and Theuerkauf May 17
 - Bubb, Huff, Landels May 18
 - Graham, Crittenden May 18
 - Castro/Mistral May 13
 - Vargas and Monta Loma May 19
-
- Principals will also gather feedback at their School Site Council Meetings, ELAC, and Principal Coffees

Board and City Council Updates

- June 3
 - Staff will present feedback from the community to the Board of Trustees
- June 8
 - Tentatively, staff will present or provide a report to City Council on feedback received from the community
- June 17
 - Staff will present schematic designs, budget, and timeline for approval from the Board.



Mountain View
Whisman
School District

The Design Process

Design Considerations

- Identify deficiencies within existing lighting in parking areas and path of travel to/from campus.
- Address deficiencies with light standards and bollard type lights to ensure illuminated path of travel for staff/students/public who may access sites prior to sunrise or in evenings.
- Provide directional LED lighting to eliminate light transfer to neighboring areas or properties.
- Standards to be operated by photo cell and timers.

Proposed Light Standards



d#series

D-Series LED Bollard



Buy American

Specifications

Diameter: 8" Round
(20.3 cm)

Height: 42"
(106.7 cm)

Weight (max): 27 lbs
(12.25 kg)



d#series

D-Series Size 1 LED Area Luminaire



Specifications

EPA: 1.01 ft²
(0.09 m²)

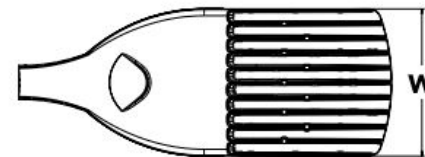
Length: 33"
(83.8 cm)

Width: 13"
(33.0 cm)

Height H1: 7-1/2"
(19.0 cm)

Height H2: 3-1/2"

Weight (max): 27 lbs
(12.2 kg)

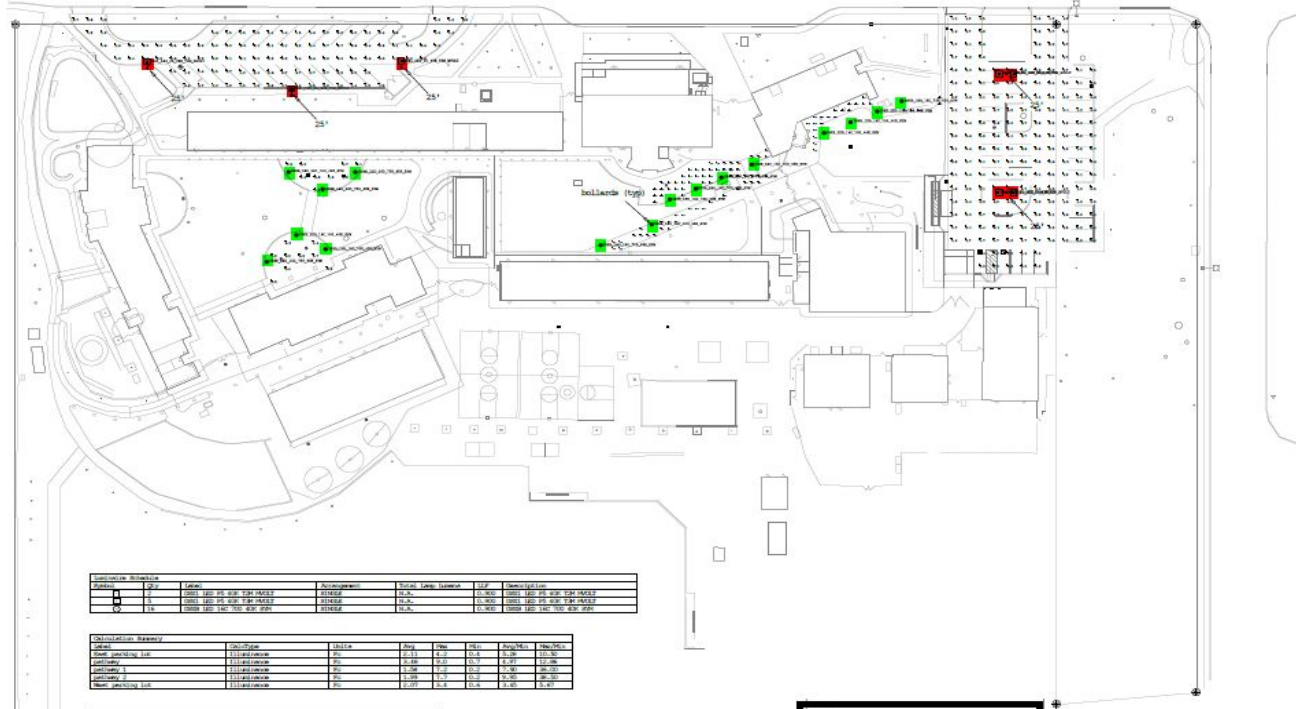


Proposed Light Standards



Light pole height will range in height based on need
The bollards are 5 feet high

Theuerkauf Elementary School



Symbol	Label	Quantity	Height	Beam Spread	Mounting
■	1000-140-140-100-100-100-100-100-100-100	2112	10.0'	120°	0.000-140-140-100-100-100-100-100-100-100
■	1000-140-140-100-100-100-100-100-100-100	2112	10.0'	120°	0.000-140-140-100-100-100-100-100-100-100
■	1000-140-140-100-100-100-100-100-100-100	2112	10.0'	120°	0.000-140-140-100-100-100-100-100-100-100

Symbol	Label	Quantity	Height	Beam Spread	Mounting
■	1000-140-140-100-100-100-100-100-100-100	2112	10.0'	120°	0.000-140-140-100-100-100-100-100-100-100
■	1000-140-140-100-100-100-100-100-100-100	2112	10.0'	120°	0.000-140-140-100-100-100-100-100-100-100
■	1000-140-140-100-100-100-100-100-100-100	2112	10.0'	120°	0.000-140-140-100-100-100-100-100-100-100

Symbol	Label	Quantity	Height	Beam Spread	Mounting
■	1000-140-140-100-100-100-100-100-100-100	2112	10.0'	120°	0.000-140-140-100-100-100-100-100-100-100
■	1000-140-140-100-100-100-100-100-100-100	2112	10.0'	120°	0.000-140-140-100-100-100-100-100-100-100
■	1000-140-140-100-100-100-100-100-100-100	2112	10.0'	120°	0.000-140-140-100-100-100-100-100-100-100

Legend

- Pole Mounted LED
- Bollard Style LED

1 SITE LIGHTING PHOTOMETRIC PLAN
SCALE: 1" = 30'-0"



THEUERKAUF ELEMENTARY SCHOOL
SITE LIGHTING

MOUNTAIN VIEW WHISMAN SCHOOL DISTRICT



NO.	ISSUE FOR	DATE

THIS DOCUMENT, DESIGN AND INFORMATION CONTAINED ON THIS SHEET IS THE PROPERTY OF HAMILTON + AITKEN ARCHITECTS AND ENGINEERS. IT IS TO BE USED ONLY FOR THE PROJECT AND SITE SPECIFICALLY IDENTIFIED ON THIS SHEET. ANY REUSE OF THIS DOCUMENT IS STRICTLY PROHIBITED. © 2024 HAMILTON + AITKEN ARCHITECTS AND ENGINEERS.

SITE LIGHTING PHOTOMETRIC PLAN

PROJECT NUMBER:

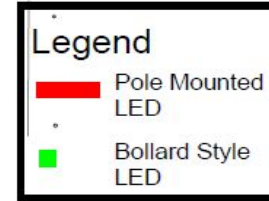
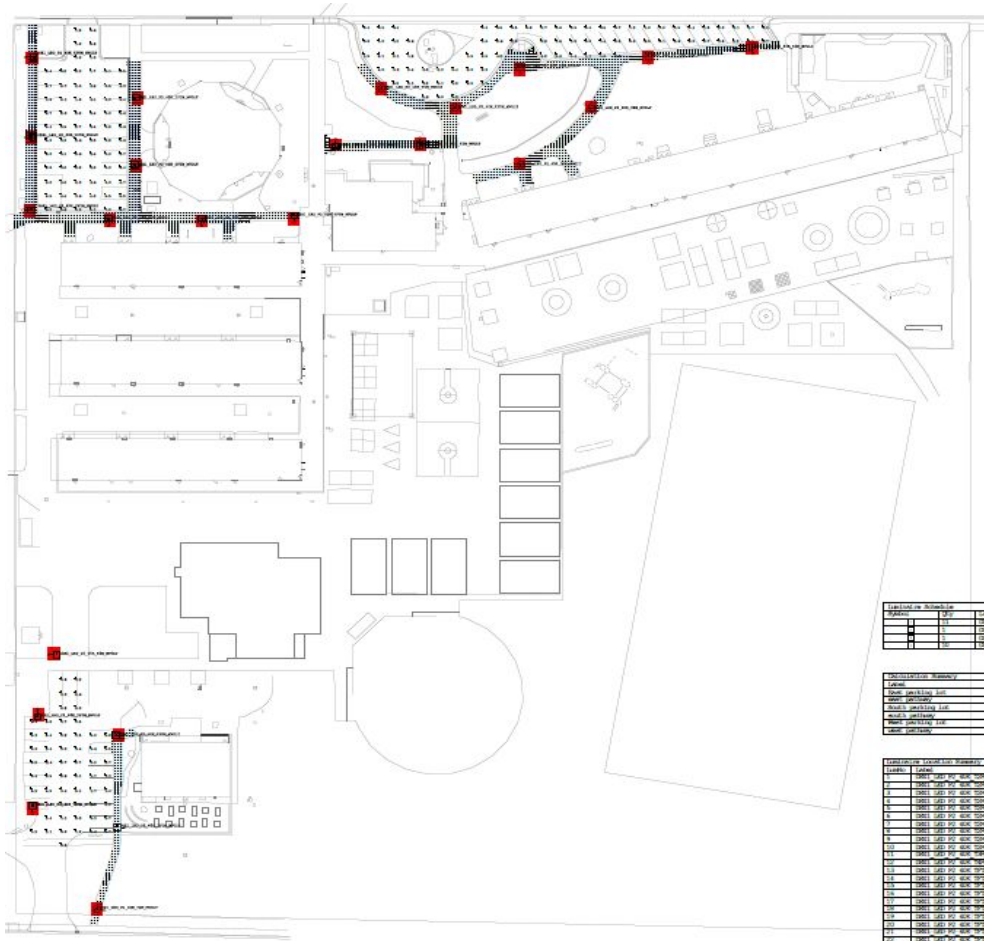
E1.9

DATE: PROJECT NO: 2024-100

Theuerkauf Elementary School - Enlarged Plan Front Parking and Administration Building



Bubb Elementary School



Landscape Schedule						
Symbol	Qty	Notes	Manufacturer	Model / Lamp Type	LF	Notes
(Red Square)	1	3000 LED 20' 30W 3000MKS	2000000	3000	3000	20' 30W 3000MKS
(Green Square)	1	3000 LED 20' 30W 3000MKS	2000000	3000	3000	20' 30W 3000MKS

Landscape Schedule Summary						
Symbol	Qty	Notes	Manufacturer	Model / Lamp Type	LF	Notes
(Red Square)	1	3000 LED 20' 30W 3000MKS	2000000	3000	3000	20' 30W 3000MKS
(Green Square)	1	3000 LED 20' 30W 3000MKS	2000000	3000	3000	20' 30W 3000MKS

Landscape Schedule Summary						
Symbol	Qty	Notes	Manufacturer	Model / Lamp Type	LF	Notes
(Red Square)	1	3000 LED 20' 30W 3000MKS	2000000	3000	3000	20' 30W 3000MKS
(Green Square)	1	3000 LED 20' 30W 3000MKS	2000000	3000	3000	20' 30W 3000MKS
(Red Square)	1	3000 LED 20' 30W 3000MKS	2000000	3000	3000	20' 30W 3000MKS
(Green Square)	1	3000 LED 20' 30W 3000MKS	2000000	3000	3000	20' 30W 3000MKS
(Red Square)	1	3000 LED 20' 30W 3000MKS	2000000	3000	3000	20' 30W 3000MKS
(Green Square)	1	3000 LED 20' 30W 3000MKS	2000000	3000	3000	20' 30W 3000MKS
(Red Square)	1	3000 LED 20' 30W 3000MKS	2000000	3000	3000	20' 30W 3000MKS
(Green Square)	1	3000 LED 20' 30W 3000MKS	2000000	3000	3000	20' 30W 3000MKS
(Red Square)	1	3000 LED 20' 30W 3000MKS	2000000	3000	3000	20' 30W 3000MKS
(Green Square)	1	3000 LED 20' 30W 3000MKS	2000000	3000	3000	20' 30W 3000MKS
(Red Square)	1	3000 LED 20' 30W 3000MKS	2000000	3000	3000	20' 30W 3000MKS
(Green Square)	1	3000 LED 20' 30W 3000MKS	2000000	3000	3000	20' 30W 3000MKS
(Red Square)	1	3000 LED 20' 30W 3000MKS	2000000	3000	3000	20' 30W 3000MKS
(Green Square)	1	3000 LED 20' 30W 3000MKS	2000000	3000	3000	20' 30W 3000MKS
(Red Square)	1	3000 LED 20' 30W 3000MKS	2000000	3000	3000	20' 30W 3000MKS
(Green Square)	1	3000 LED 20' 30W 3000MKS	2000000	3000	3000	20' 30W 3000MKS
(Red Square)	1	3000 LED 20' 30W 3000MKS	2000000	3000	3000	20' 30W 3000MKS
(Green Square)	1	3000 LED 20' 30W 3000MKS	2000000	3000	3000	20' 30W 3000MKS
(Red Square)	1	3000 LED 20' 30W 3000MKS	2000000	3000	3000	20' 30W 3000MKS
(Green Square)	1	3000 LED 20' 30W 3000MKS	2000000	3000	3000	20' 30W 3000MKS
(Red Square)	1	3000 LED 20' 30W 3000MKS	2000000	3000	3000	20' 30W 3000MKS
(Green Square)	1	3000 LED 20' 30W 3000MKS	2000000	3000	3000	20' 30W 3000MKS

1 SITE LIGHTING PHOTOMETRIC PLAN
SCALE: 1" = 30'-0"

BENJAMIN BUBB ELEMENTARY SCHOOL
SITE LIGHTING
325 HANG AVE.
MOUNTAIN VIEW, CA 94030

MOUNTAIN VIEW WHISMAN SCHOOL DISTRICT
1400 MONTECITO AVE.
MOUNTAIN VIEW, CA 94030
(925) 528-3000

HA HAMILTON + AITKEN ARCHITECTS
200 MARINA STREET STE 400
SAN FRANCISCO CA 94109
T: 415.774.4000
www.hamilton.com

AC Alliance Engineering, Inc.
2215 W. HAYWARD AVE., 4TH FLOOR SUITE 100
P.O. BOX 11521-011
www.allianceeng.com

NO. 00000 POK. DATE:

THE ORIGINAL, DESIGN AND CONSTRUCTION CONTRACTING ON THIS SHEET WAS PROVIDED FOR USE ON THE PROJECT BY THE DEPARTMENT OF REVENUE AND FINANCE FOR THE PURPOSE OF FILING CONTRACT DOCUMENTS UNDER THE PUBLIC CONTRACT LAW. ANY OTHER USE OF THIS SHEET WITHOUT THE WRITTEN CONSENT OF ALLIANCE ENGINEERING, INC. IS STRICTLY PROHIBITED.

REV. PLAN: DRAWING TITLE:

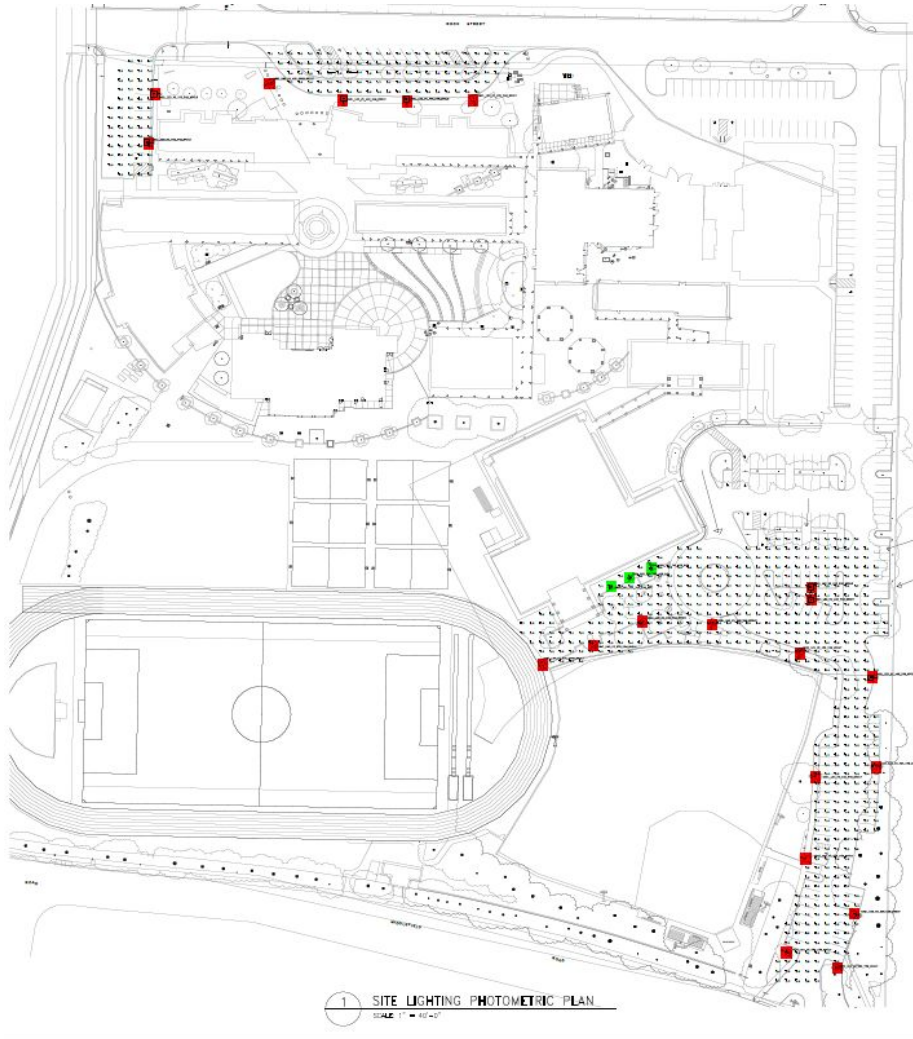
SITE LIGHTING PHOTOMETRIC PLAN

SHEET NUMBER:

E1.1

CAD FILE: DATE: PROJECT NO: 2006100
DWG NO: 2006100

Crittenden Middle School



Legend

- Pole Mounted LED
- Bollard Style LED

Item No.	Description	Quantity	Unit	Notes
1	Pole Mounted LED	12	Each	
2	Bollard Style LED	10	Each	

Item No.	Description	Quantity	Unit	Notes
3	Light Pole	12	Each	
4	Bollard	10	Each	

Item No.	Description	Quantity	Unit	Notes
5	Light Fixture	12	Each	
6	Bollard Fixture	10	Each	

1 SITE LIGHTING PHOTOMETRIC PLAN
SCALE: 1" = 40'-0"

GRAPHIC SCALE IN FEET
0 10 20 30 40

CRITTENDEN MIDDLE SCHOOL
SITE LIGHTING
1701 ROCK ST.
MOUNTAIN VIEW, CA 94043

MOUNTAIN VIEW WHISMAN SCHOOL DISTRICT
1400 MONTECITO AVE.
MOUNTAIN VIEW, CA 94043
(925) 238-8500

HAMILTON + AITKEN ARCHITECTS
100 MONTECITO STREET STE 400
MOUNTAIN VIEW, CA 94043
T: 925 238-8500
www.hamaitken.com

AC
Alliance
Engineering
Consultants, Inc.
12121 RAYBURN AVE. #400
DUBLIN, CA 94568
PH: 925 835-2000
www.allianceca.com

DATE: 08/08/2018

NO. 08/08/2018

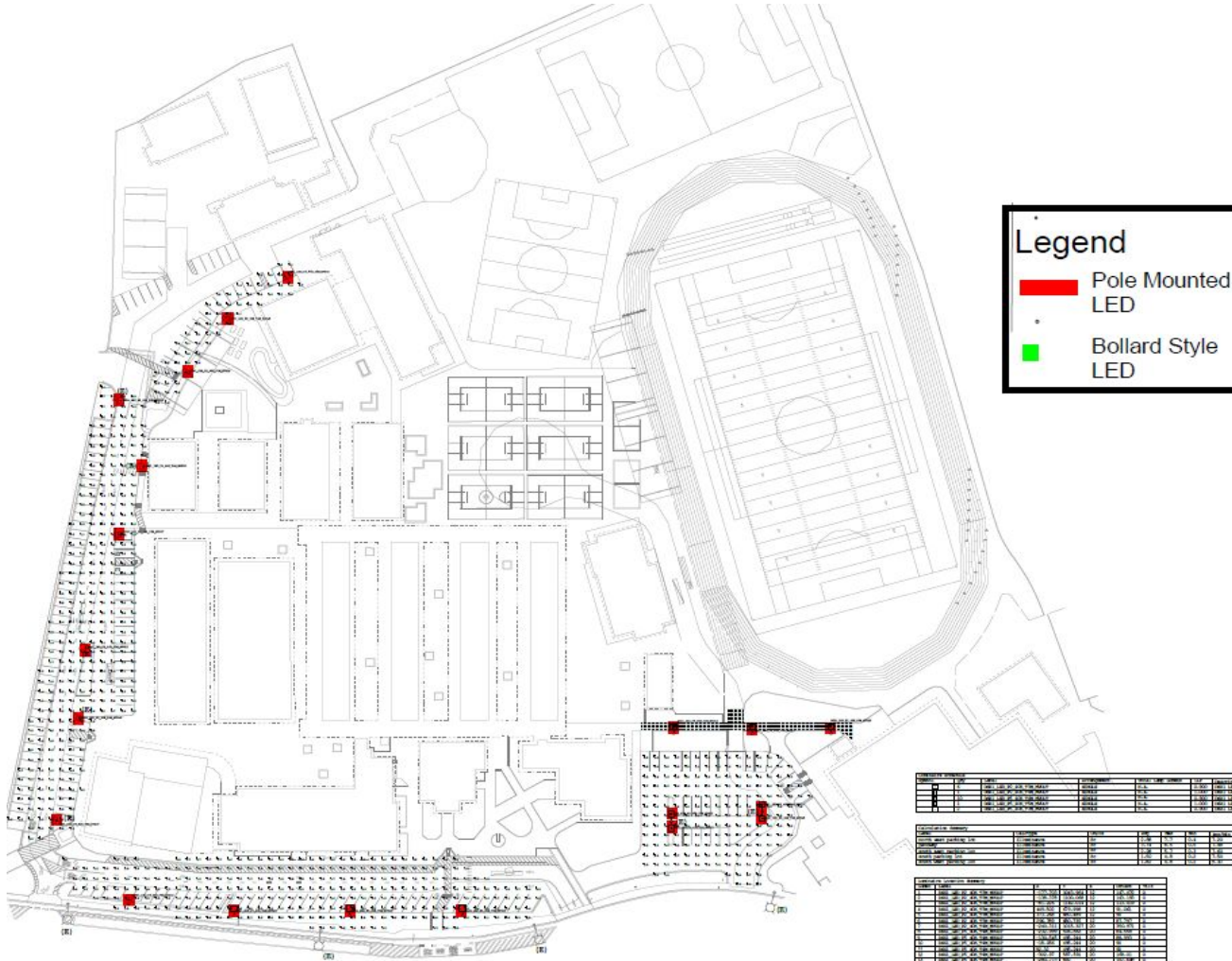
DATE:

FILE CHANGE, DESIGN AND EXECUTION CONTROLLED BY THE ARCHITECT. NO FIELD CHANGES. THE CONTRACTOR SHALL VERIFY ALL DIMENSIONS AND CONDITIONS OF THE SITE PRIOR TO CONSTRUCTION. © 2018 HAMILTON + AITKEN ARCHITECTS

SHEET NUMBER
E1.3

DATE: 08/08/2018 PROJECT NO: 2000120
DRAWN BY: 08/08/2018

Graham Middle School



Legend

- Pole Mounted LED
- Bollard Style LED

ID	TYPE	DESCRIPTION	HEIGHT	SPACING	WATTAGE	BEAM ANGLE	FOOT CANDLE
1	Pole Mounted LED	100W, 100lm	10	10	100	120	10
2	Pole Mounted LED	100W, 100lm	10	10	100	120	10
3	Pole Mounted LED	100W, 100lm	10	10	100	120	10

ID	TYPE	DESCRIPTION	HEIGHT	SPACING	WATTAGE	BEAM ANGLE	FOOT CANDLE
4	Bollard Style LED	50W, 50lm	5	5	50	120	5
5	Bollard Style LED	50W, 50lm	5	5	50	120	5

ID	TYPE	DESCRIPTION	HEIGHT	SPACING	WATTAGE	BEAM ANGLE	FOOT CANDLE
6	Pole Mounted LED	100W, 100lm	10	10	100	120	10
7	Pole Mounted LED	100W, 100lm	10	10	100	120	10
8	Pole Mounted LED	100W, 100lm	10	10	100	120	10

1 SITE LIGHTING PHOTOMETRIC PLAN
SCALE: 1" = 40'-0"



GRAHAM MIDDLE SCHOOL
SITE LIGHTING
1175 CASTRO ST.
MOUNTAIN VIEW, CA 94039

MOUNTAIN VIEW WHISMAN SCHOOL DISTRICT
1400 MONTECITO AVE.
MOUNTAIN VIEW, CA 94039
(805) 509-3500

HAMILTON + ATKIN ARCHITECTS
225 MARINA STREET STE 100
SAN FRANCISCO, CA 94133
T: 415.415.5255
www.hamtk.com

AC CONSULTING
AC CONSULTING
CONSULTANTS, Inc.
1000 MARKET STREET, SUITE 100
SAN FRANCISCO, CA 94102
PH: 415.774.0144
WWW.ACCONSULTANTS.COM

NO.	ISSUE FOR	DATE

THIS DRAWING, DESIGN AND SPECIFICATION CONFORMS WITH THE STANDARDS AND PRACTICES FOR LIGHTING DESIGN AND INSTALLATION SET FORTH IN THE IESNA HANDBOOK OF IESNA. THE USER OF THIS DRAWING, DESIGN AND SPECIFICATION SHALL BE RESPONSIBLE FOR OBTAINING THE NECESSARY PERMITS AND APPROVALS FROM ALL APPLICABLE LOCAL, STATE AND FEDERAL AGENCIES. CONSULT WITH THE ARCHITECT FOR DETAILS.

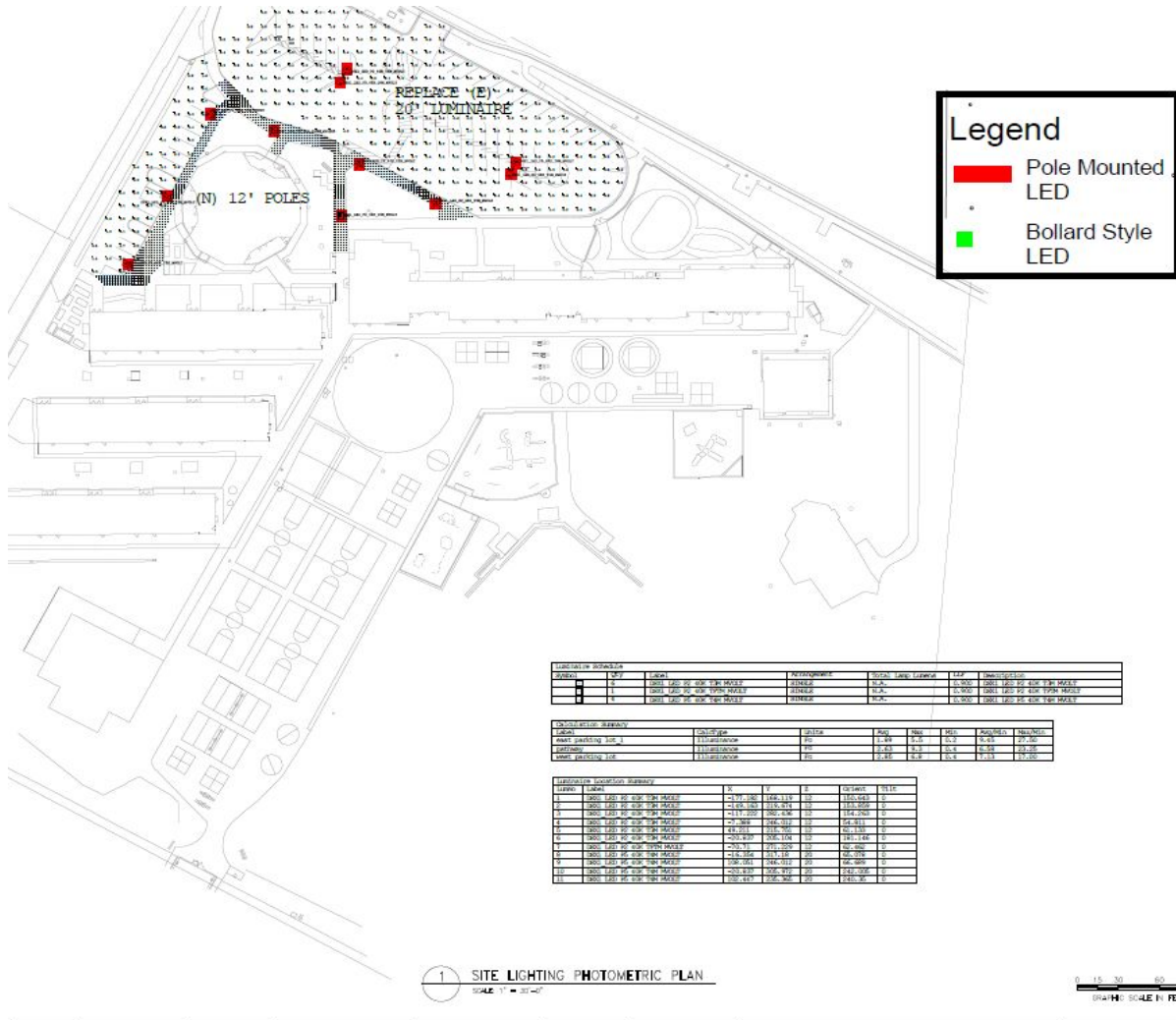
REV PLAN

DRAWING TITLE
SITE LIGHTING PHOTOMETRIC PLAN

DWG# NUMBER
E1.4

CAD FILE
DATE: 2024-10-10 PROJECT NO.: 2024-100

Landels Elementary School



EDITH LANDELS ELEMENTARY SCHOOL
 SITE LIGHTING
 115 WEST DANA ST. MOUNTAIN VIEW, CA 94031

MOUNTAIN VIEW WHISMAN SCHOOL DISTRICT
 1480 MONTECITO AVE. MOUNTAIN VIEW, CA 94043
 (925) 538-3300

HAMILTON + AITKEN ARCHITECTS
 108 BROADWAY FROM ST. AND SAN FRANCISCO, CA 94102
 T: 415 871 8800 www.haia.com

AC Engineering Consultants, Inc.
 1000 S. RAYBURN AVE. #200 PALMDALE, CA 93550
 PROJECT NO. 15-21-01-6 www.ac-engineer.com

DATE: 10/20/2016

PROJECT TITLE: SITE LIGHTING PHOTOMETRIC PLAN

SHEET NUMBER: E1.6

SCALE: 1" = 30'-0"

Recap: Board and City Council Updates After Community Meetings

- June 3
 - staff will present feedback from the community to the Board of Trustees
- June 8
 - Tentatively, staff will present or provide a report to City Council on feedback received from the community
- June 17
 - staff will present schematic designs, budget, and timeline for approval from the Board of Trustees.



Mountain View
Whisman
School District

Thoughts and Questions