



**Mountain View
Whisman
School District**

Paving and Utilities Project

- **Castro Elementary School**
- **Theuerkauf Elementary School**

April 1, 2021



Mountain View
Whisman
School District

Scope of Work

Scope of Work

- Paving and striping for new parking area at Castro Elementary School.
- Repair and replacement of asphalt paving in parking lots and playground at Theuerkauf Elementary School. Includes grading to correct drainage deficiencies in staff parking lot.

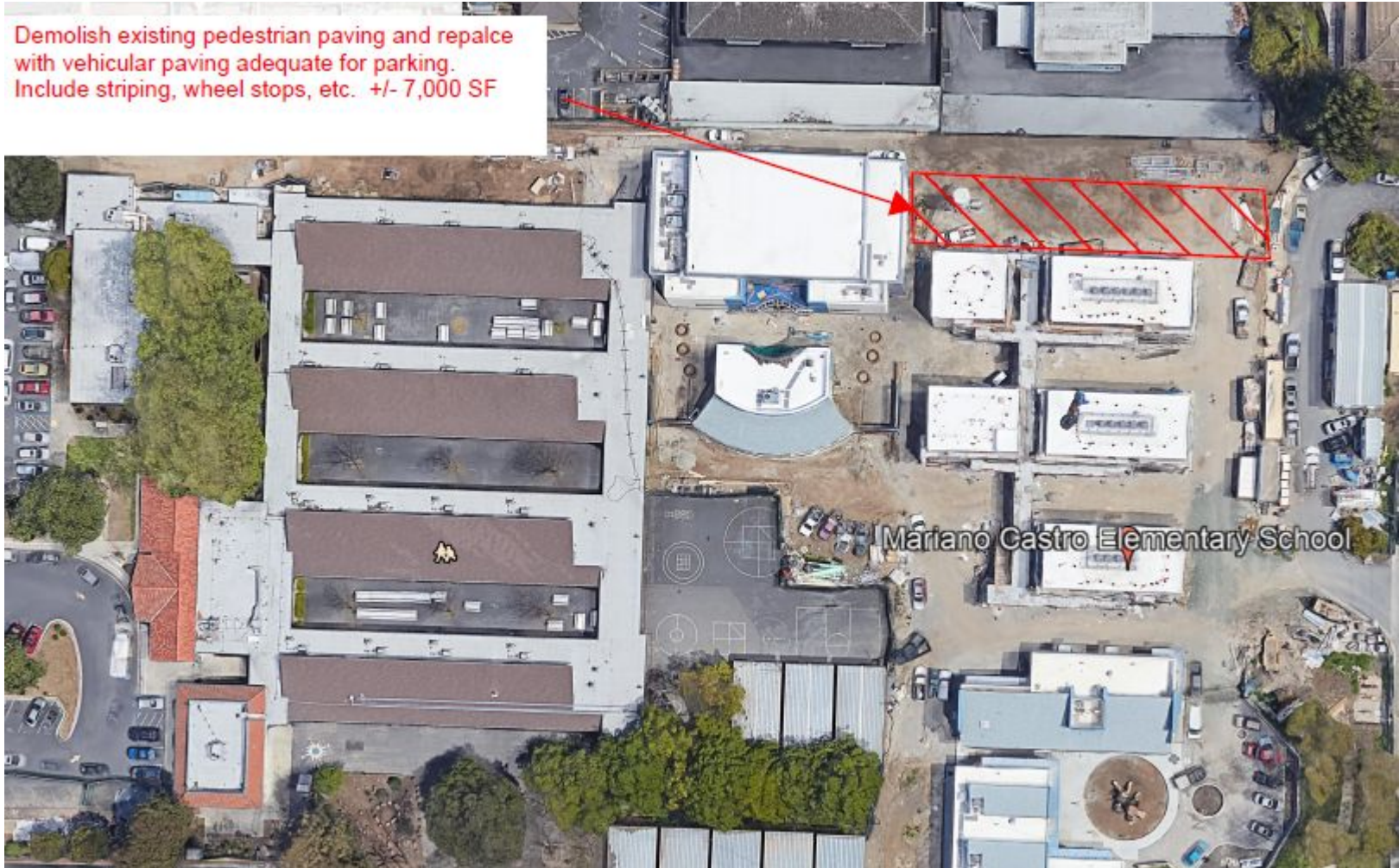


Mountain View
Whisman
School District

Proposed Plans

Castro Elementary School

Demolish existing pedestrian paving and repalce with vehicular paving adequate for parking. Include striping, wheel stops, etc. +/- 7,000 SF



Theuerkauf Elementary School

Resurface and Re-stripe
staff parking lot +/-9,000SF

Repave and Re-stripe main
parking lot +/-20,000SF



Resurface and Re-stripe
blacktop +/-60,000SF



Mountain View
Whisman
School District

Proposed Budget

Schematic Design Budget

Paving and Utilities Project at Theuerkauf and Castro Elementary Schools -
Schematic Design Estimate - 3.23.21

#	Description	Quantity	Unit	Unit \$	Total
1	Castro Parking Lot	7000	sf	\$ 15	\$ 105,000
2	Theuerkauf Parking Lot	20000	sf	\$ 15	\$ 300,000
3	Theuerkauf Overlay Playground	65000	sf	\$ 5	\$ 325,000
4	Theuerkauf Stripe Playground	1	ls	\$ 15,000	\$ 15,000
5	Theuerkauf Utilities	1	alw	\$ 100,000	\$ 100,000
6	Monta Loma Utilities	1	alw	\$ 50,000	\$ 50,000
7	Crittenden Utilities	1	alw	\$ 100,000	\$ 100,000
8	Crittenden PA	1	ls	\$ 60,000	\$ 60,000
9	Anticipated bid amount	1	ls	\$	\$ 1,055,000

Project Cost

Description	Quantity	Unit	Unit Cost	Subtotal
Construction Budget	1	ls	\$	1,055,000
Design Contingency	10	%	\$	105,500
Construction Contingency	10	%	\$	105,500
Architect Fees	1	ls	\$ -	\$ 68,600
Architect Contingency	1	ls	\$	8,440
Architect Reimbursable Expenses	1	ls	\$	2,058
Blueprinting	1	ls	\$	2,500
Topographic Survey	1	ls	\$ 10,000	\$ 10,000
Soils Report & Testing	1	%	\$	10,550
CM Fees	4.5	%	\$	47,475
DSA Inspector	3	mos.	\$ 12,500	\$ 37,500
Testing Laboratory	1	%	\$	10,550
Bid Advertisements	1	ls	\$	2,500
DSA Fees	1.2	%	\$ 1,266,000	\$ 15,192
CGS Fees	2	ea	\$ 3,600	\$ 7,200
CEQA	1	ls	\$ 2,500	\$ 2,500
Legal	1	ls	\$ 2,500	\$ 2,500
Misc. Expenses	1	ls	\$ 10,000	\$ 10,000
Grand Total			\$	\$ 1,503,565



Mountain View
Whisman
School District

Schedule

Schedule

Paving and Utilites Phase 1 (Castro, Crittenden, Monta Loma and Theuerkauf)	184 days	Mon 11/30/20	Thu 8/12/21
Schematic Design	60 days	Mon 11/30/20	Fri 2/19/21
BOT Action Schematic Design	1 day	Thu 4/1/21	Thu 4/1/21
Construction Documents	30 days	Fri 4/2/21	Thu 5/13/21
DSA Over-the-Counter	25 days	Fri 5/14/21	Thu 6/17/21
Bid and Award (for Summer 2022 Construction)	20 days	Fri 5/21/21	Thu 6/17/21
Construction	40 days	Fri 6/18/21	Thu 8/12/21



Mountain View
Whisman
School District

Thoughts and Questions