

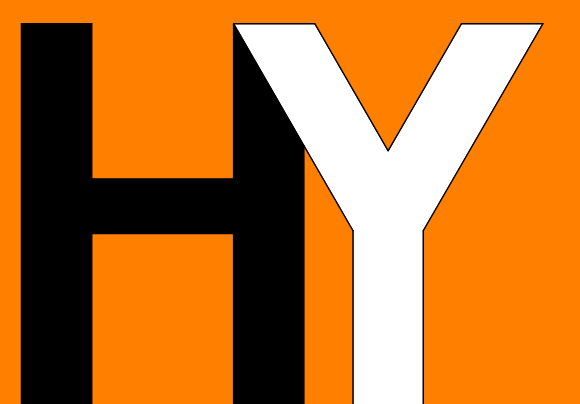


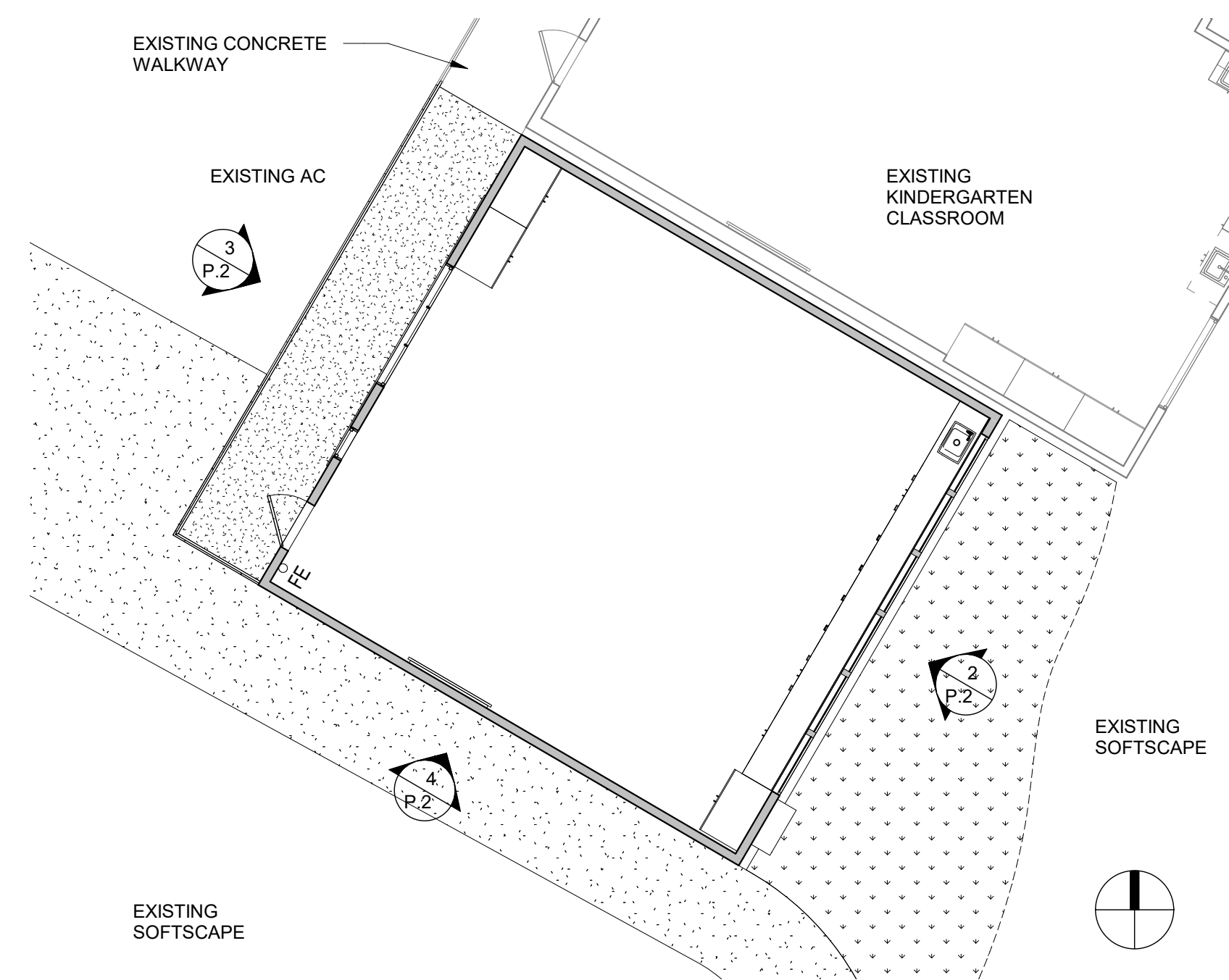
# Frank L. Huff Elementary School New Portable

Mountain View Whisman School District

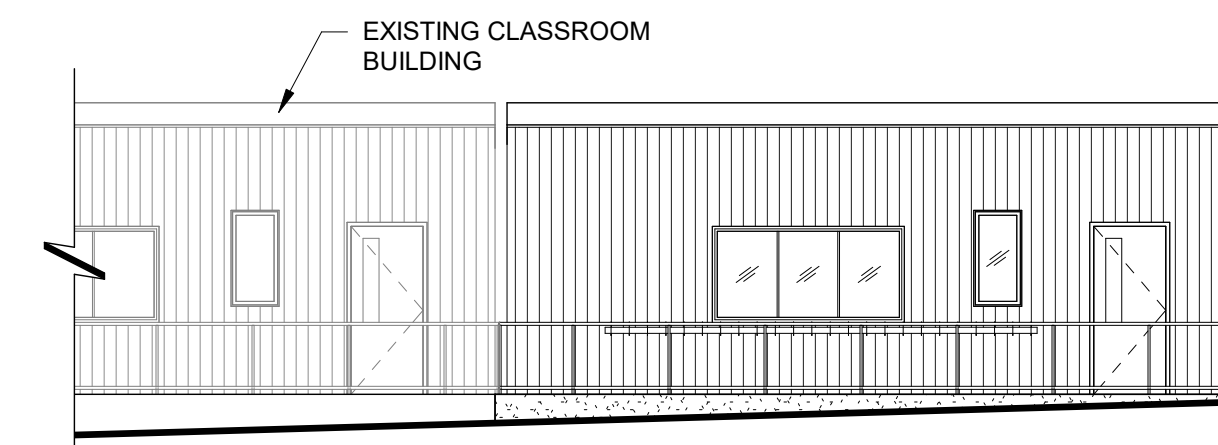
12/09/20

HIBSER YAMAUCHI  
Architects, Inc.

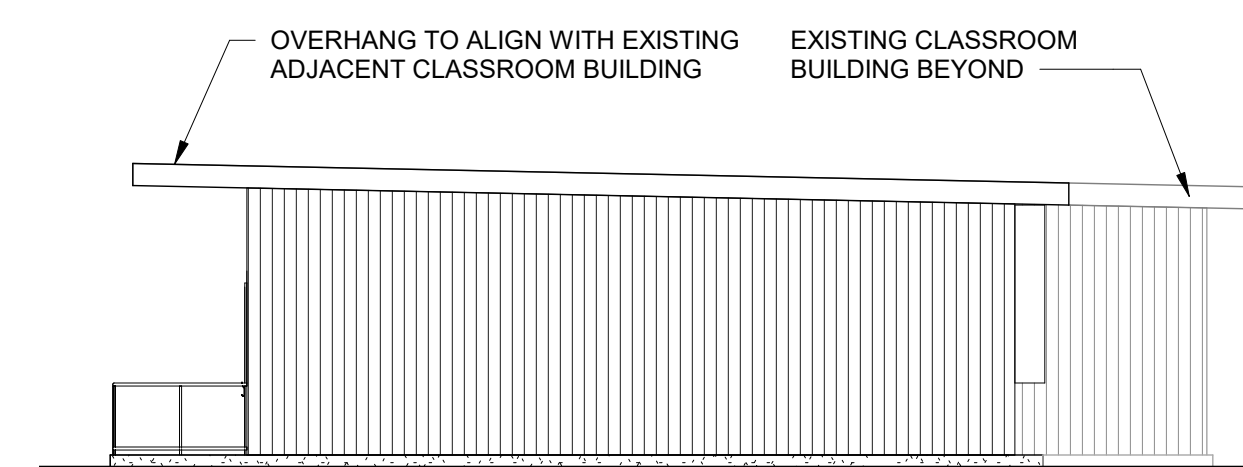




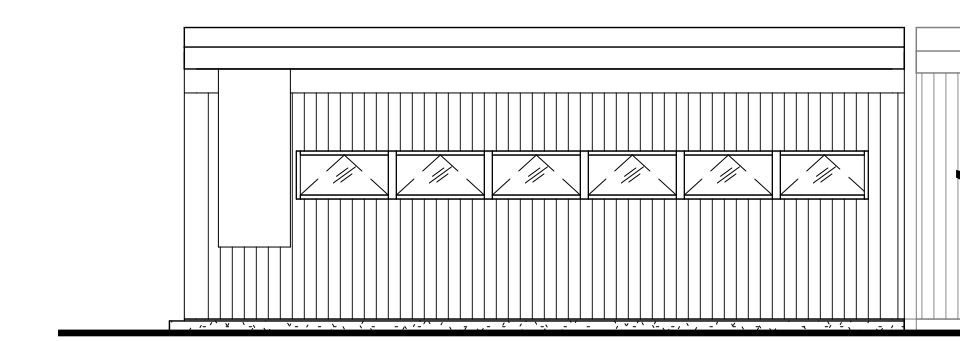
**1 NEW FLEX CLASSROOM BUILDING FLOOR PLAN**  
1/8" = 1'-0"



**3 EXTERIOR ELEVATION - WEST**  
1/8" = 1'-0"



**4 EXTERIOR ELEVATION - SOUTH**  
1/8" = 1'-0"



**2 EXTERIOR ELEVATION - EAST**  
1/8" = 1'-0"



# Frank L. Huff Elementary School New Portable

Mountain View Whisman School District

01/12/21

HIBSER YAMAUCHI  
Architects, Inc.

