

Mountain View Whisman School District

Resolution No. 01-020421

Determination that the Solar Projects at School Campuses and District Administration are Exempt from the California Environmental Quality Act, Approving the Project, and Directing the Filing of the Notice of Exemption

WHEREAS, the Mountain View Whisman School District (“**District**”) has developed ten (10) separate solar array projects, each one consisting of the construction and installation of solar/photovoltaic carports or shade structures and associated equipment at ten (10) separate existing District school campuses and administration sites (“**Projects**”) to provide supplemental green energy in the form of electricity from solar energy to each respective site; and,

WHEREAS, each of the projects are located within existing school campuses and District administration at the following locations (“**Sites**”):

	School Site Name	Address
1	Benjamin Bubb ES	525 Hans Ave., Mountain View, CA 94040
2	Crittenden MS	1701 Rock St., Mountain View, CA 94043
3	Edith Landels ES	115 West Dana St., Mountain View, CA 94041
4	Frank L Huff ES	253 Martens Ave., Mountain View, CA 94040
5	Graham MS	1175 Castro St., Mountain View, CA 94040
6	Gabriela Mistral-Mariano Castro ES	505 Escuela Ave., Mountain View, CA 94040
7	Monta Loma ES	460 Thompson Ave., Mountain View, CA 94043
8	Stevenson ES – District Office	750 San Pierre Way, Mountain View, CA 94043
9	Theuerkauf ES	1625 San Luis Ave, Mountain View, CA 94043
10	Vargas ES	220 N. Whisman Road, Mountain View, CA 94043

WHEREAS, the Projects consist of the construction and installation of underlit solar carports, shade structures or rooftop structures on either the existing parking lots, playfield, hardscape or rooftop areas of the existing District sites. The maximum height of the carports and shade structures is 13.5 feet, with an approximately 7% - 10% tilt. The Projects will also include removal of non-native, ornamental trees from either the playfield or hardscape areas. Certain campuses will include an electric vehicle (“**EV**”) charging station ground mounted to existing hardscape; and,

WHEREAS, solar/photovoltaic system at Benjamin Bubb Elementary School will include two solar shade structures located in the center of the playground and south and east of the school buildings, two inverters, and other associated equipment, as depicted in **Exhibit A**. The EV charging station will be located in the northwestern parking lot; and,

WHEREAS, solar/photovoltaic system at Crittenden Middle School will include one solar carport located in the northeastern parking lot, and two rooftop structures located on the auditorium building just south of the parking lot and the library/classroom building located on the southwestern portion of the school, four inverters, and other associated equipment, as depicted in **Exhibit A**. The EV charging station will be located in the northeastern parking lot underneath the carport structure.

Approximately two light poles and nine non-native, ornamental trees will be removed, and nine trees will be planted; and,

WHEREAS, solar/photovoltaic system at Edith Landels Elementary School will include two solar shade structures located in the center of the playground and south and east of the school buildings, two inverters, and other associated equipment, as depicted in **Exhibit A**. The EV charging station will be located in the northern parking lot northeast of the main school entrance. Approximately one non-native, ornamental tree will be removed, and one tree will be planted; and,

WHEREAS, solar/photovoltaic system at Frank L. Huff Elementary School will include two solar shade structures located in the center of the playground and south and east of the school buildings, two inverters, and other associated equipment, as depicted in **Exhibit A**. The EV charging station will be located in the northern parking lot northwest of the main school entrance. Approximately three non-native, ornamental trees will be removed, and three trees will be planted; and,

WHEREAS, solar/photovoltaic system at Graham Middle School will include three solar carport structures, one located in the parking lot north of building “Unit 11”, one located in the parking lot north of building “Unit 17”, one located in the District Corp Yard parking lot, and two solar shade structures located in the playground area north of the track to the east of building “Unit 14”, five inverters, and other associated equipment, as depicted in **Exhibit A**. The EV charging station will be located in the northeastern parking lot underneath the solar structure near “Unit 17”. One light pole and its base will be removed. Approximately ten non-native, ornamental trees will be removed, and ten trees will be planted; and,

WHEREAS, solar/photovoltaic system at Gabriela Mistral / Mariana Castro Elementary School will include one solar carport structure located in the northwestern parking lot and one solar shade structure located in the center of the playground southwest of the Library, two inverters, and other associated equipment, as depicted in **Exhibit A**. The EV charging stations will be located in the northwestern parking lot underneath the solar structure and in Parking Lot C. Four light poles and their bases will be removed. Approximately one non-native, ornamental tree will be removed, and one tree will be planted; and,

WHEREAS, solar/photovoltaic system at Monta Loma Elementary School will include one solar shade structure located in the center of the playground, and two rooftop structures on buildings “L” and “N”, two inverters, and other associated equipment, as depicted in **Exhibit A**. The EV charging station will be located in the northern parking lot. Approximately six non-native, ornamental trees will be removed, and six trees will be planted; and,

WHEREAS, solar/photovoltaic system at Stevenson Elementary School will include two solar carport structures, one located in the parking lot south of building “D” and west of building “E” and one located in the parking lot east of building F, and one solar shade structure located in the playground area between buildings “B” and “C”, four inverters, and other associated equipment, as depicted in **Exhibit A**. One EV charging station will be located in the parking lot south of building “D” and west of building “E” under the solar carport, and one will be located in the parking lot east of building “F”. Two light poles and their bases will be removed. Approximately four non-native, ornamental trees will be removed, and four trees will be planted; and,

WHEREAS, solar/photovoltaic system at Theuerkauf Elementary School will include one solar shade structure located in the eastern portion of the playground and five rooftop structures located on various school buildings, three inverters, and other associated equipment, as depicted in **Exhibit A**. The EV charging station will be located in the eastern parking lot. Approximately 12 non-native, ornamental trees will be removed, and 12 trees will be planted; and,

WHEREAS, solar/photovoltaic system at Vargas Elementary School will include one solar shade structure located in the playground area and west of building “C”, two inverters, and other associated equipment, as depicted in **Exhibit A**. The EV charging station will be located in the eastern parking lot; and,

WHEREAS, before the District may determine to carry out the Projects, it must comply with the California Environmental Quality Act (“**CEQA**”) for each of the Projects. District staff have determined that the Projects meet the definitions of the Class 3, Class 11, and Class 14 Categorical Exemptions; and,

WHEREAS, the Class 3 Categorical Exemption set forth in CEQA Guidelines section 15303 exempts a project that consists of construction and location of limited numbers of new, small facilities or structures and installation of small new equipment and facilities in small structures; and,

WHEREAS, the Class 11 Categorical Exemption set forth in CEQA Guidelines section 15311 exempts a project that consists of construction or placement of minor structures accessory to existing commercial, industrial, or institutional facilities; and,

WHEREAS, the Projects consist of the construction and installation of solar energy systems that comprise a limited number of new relatively small structures and accessory structures (i.e., solar carports, solar shade structures, EV charging stations) on existing public District administrative and school campuses, which are institutional and in an urban, built-up environment; and,

WHEREAS, the Class 14 Categorical Exemption (CEQA Guidelines, § 15314) applies to minor additions to existing schools that do not increase student capacity by more the 25% or 10 classrooms, whichever is less; and,

WHEREAS, with the exception of the District administration site at Stevenson Elementary School, the solar/photovoltaic systems would be minor additions to existing schools that do not increase any school’s student capacity; and,

WHEREAS, none of Projects will increase student capacity because none of the Projects change the physical space for housing students, since each one of the Projects is a solar/photovoltaic system and associated equipment to generate and supply solar energy to each respective school campus; and,

WHEREAS, the District has reviewed each of the Projects individually, considered whether each of the Projects may have significant environmental impacts due to unusual circumstances, and determined that none exist for any of the Projects.

NOW, THEREFORE, it is found, determined and resolved by the Governing Board of the District (“**Board**”) as follows:

Section 1. Each of the Projects meets the definition of the Class 3 Categorical Exemption (CEQA Guidelines, § 15303), because each of the Projects consists of the construction and operation of a solar/photovoltaic system containing a limited number of new small facilities or structures on an existing administration or school sites.

Section 2. Each of the Projects, meets the definition of the Class 11 Categorical Exemption (CEQA Guidelines, § 15311), because each of the Projects consists of the construction of minor structures accessory to existing institutional facilities.

Section 3. Each of the Projects, except for the District administration site at Stevenson Elementary School meets the definition of the Class 14 Categorical Exemption (CEQA Guidelines, § 15314), because each of the Projects consists of minor additions to an existing school site that will not increase original student capacity by more than twenty-five percent (25%) or ten (10) classrooms.

Section 4. There is no indication of unusual circumstances that would cause a potentially significant environmental impact related to the Project.

Section 5. The Project is exempt from the requirements of CEQA.

Section 6. The applicable requirements of CEQA have been fulfilled for the Project.

Section 7. The Superintendent or the Superintendent’s designee is authorized and directed to file the attached Notice of Exemption for the Projects with the Santa Clara County Clerk within five (5) days of the adoption of this Resolution.

PASSED AND ADOPTED by the Governing Board of the Mountain View Whisman School District this day of _____, 2021, by the following vote:

AYES: _____

NOES: _____

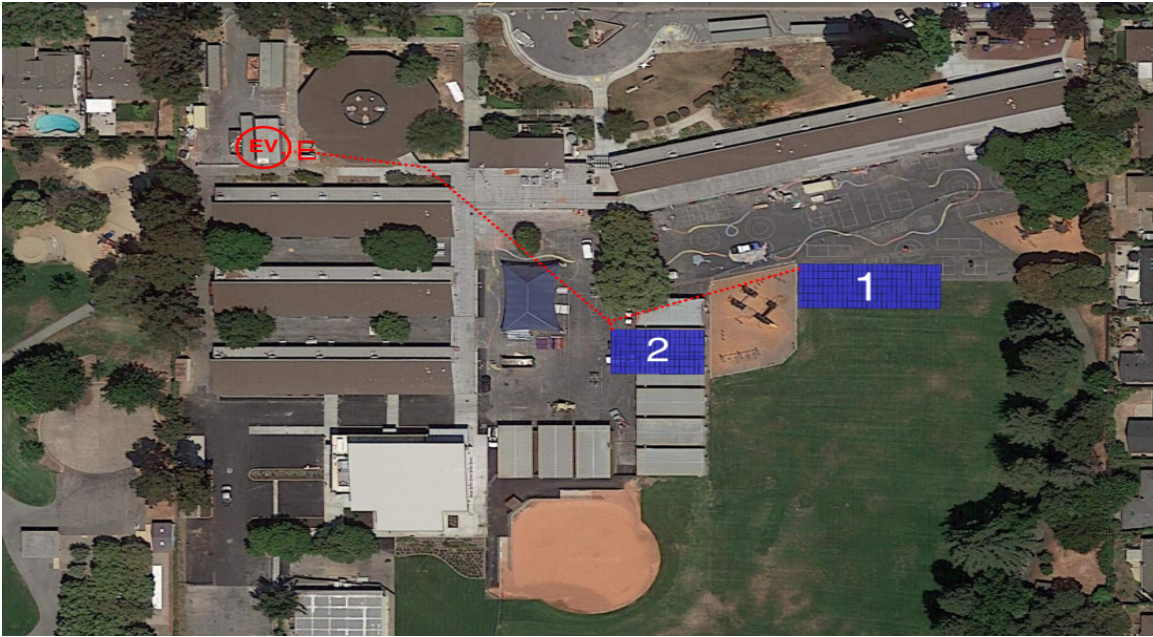
ABSENT: _____

ABSTENTIONS: _____

Clerk of the Board of Trustees
Mountain View Whisman School District
Santa Clara County, California

Exhibit A

1. Benjamin Bubb Elementary School



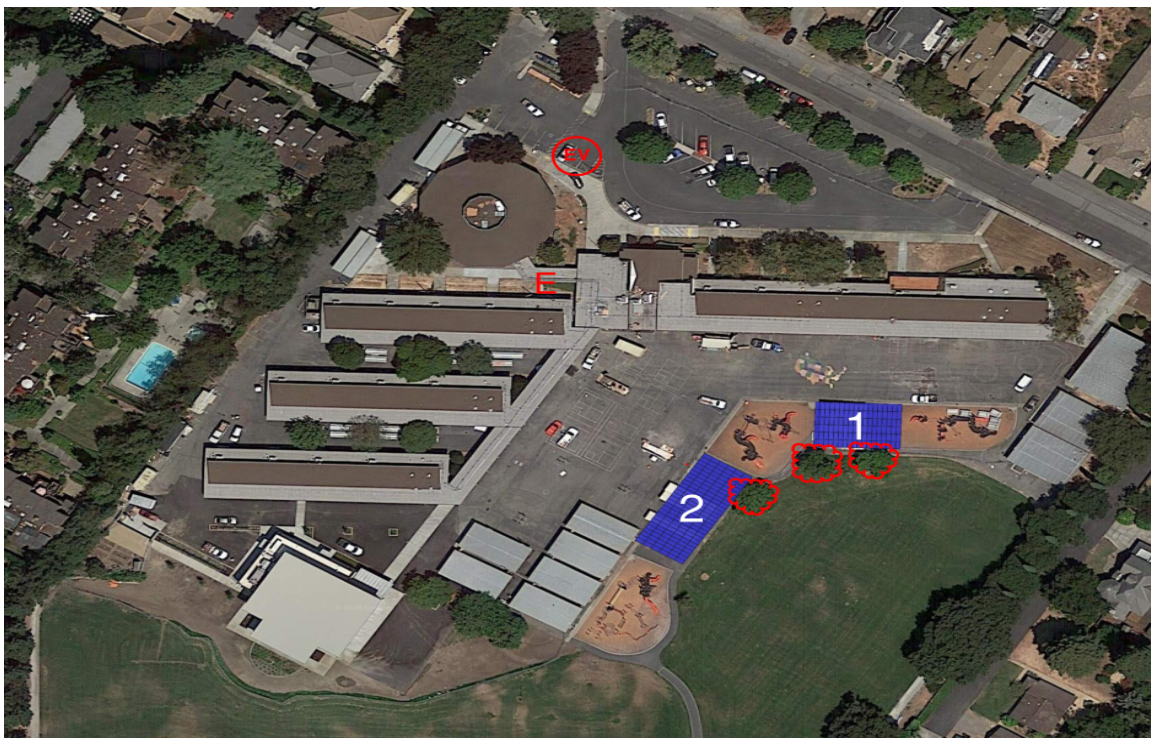
2. Crittenden Middle School



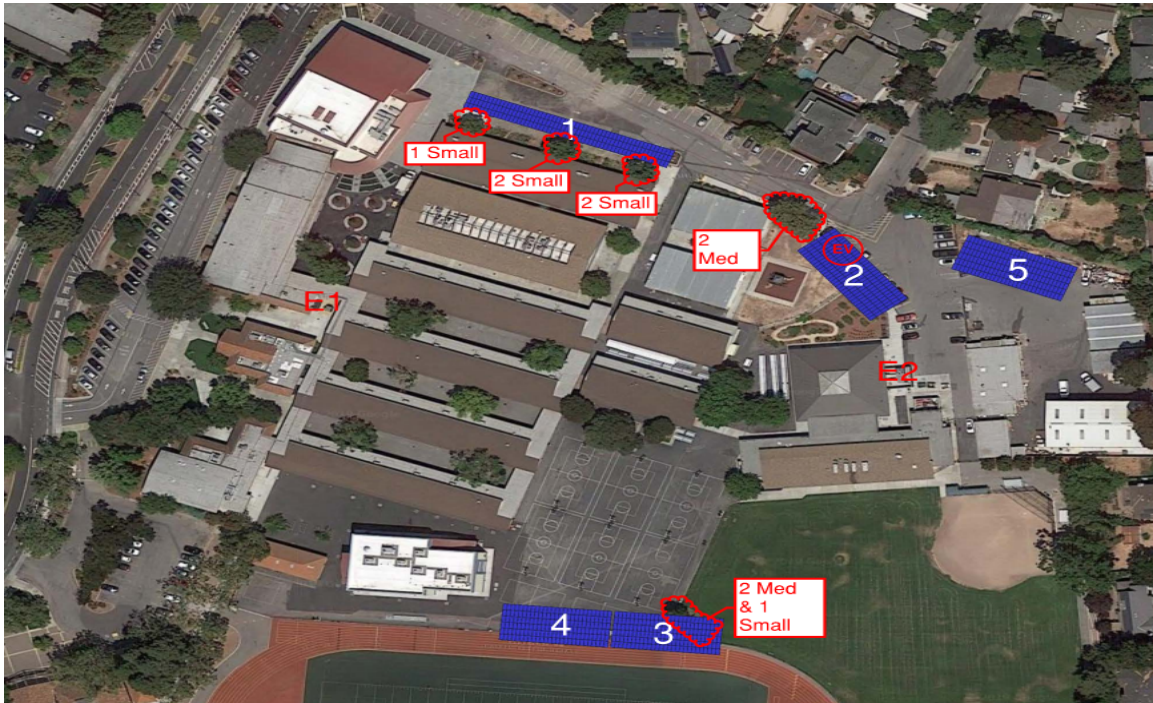
3. Edith Landels Elementary School



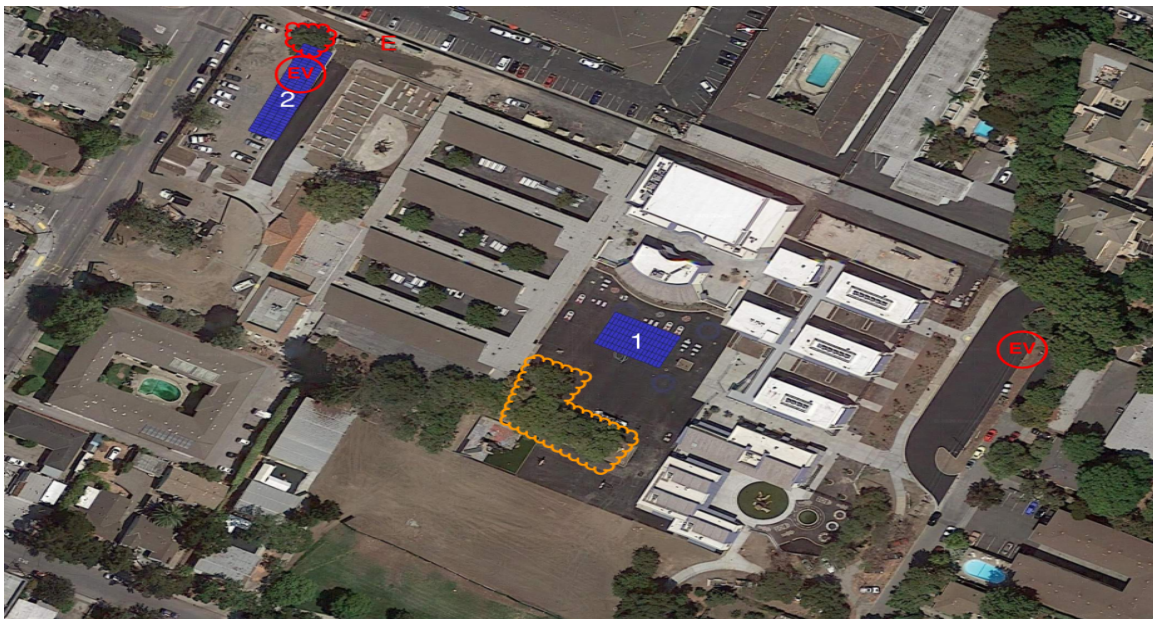
4. Frank L. Huff Elementary School



5. **Graham Middle School**



6. **Gabriela Mistral / Mariana Castro Elementary School**



7. **Monta Loma Elementary School**



8. **Stevenson Elementary School / District Office**



9. Theuerkauf Elementary School



10. Vargas Elementary School

