



Mountain View
Whisman
School District

Schematic Design Review Huff Elementary School Portable Project

January 21, 2021

Huff Elementary School Portable

Scope of Work

- Purchase and installation of one (1) new 30'x32' portable classroom building
 - Finishes to match existing campus portables with carpet and VCT flooring (wet areas), lower cabinets with countertop and sink, tack board walls with whiteboards.
 - Front Row Audio-Visual System (similar to other classrooms on campus and throughout the District).
 - Portable to be set next to existing portable classrooms on the east side of the campus.
 - Location was the preferred location based on site feedback

Site Plan



Frank L. Huff Elementary School
New Portable

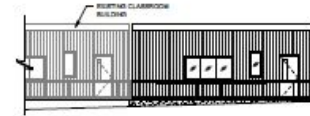
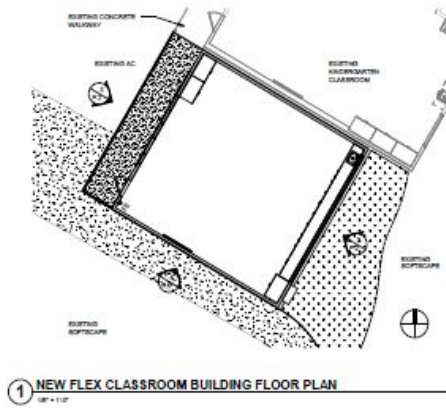
Mountain View Whisman School District

12/09/20

HIBSER YAMAUCHI
Architects, Inc.



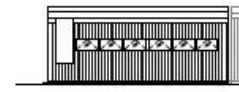
Floor Plan and Exterior Elevations



3 EXTERIOR ELEVATION - WEST
1/8" = 1'-0"



4 EXTERIOR ELEVATION - SOUTH
1/8" = 1'-0"



2 EXTERIOR ELEVATION - EAST
1/8" = 1'-0"

Frank L. Huff Elementary School
New Portable

Mountain View Whisman School District

01/12/21

HIBSER YAMAUCHI
Architects, Inc.



Schematic Design Budget

#	Description	Quantity	Unit	Unit \$	Total
1	Sitework	1524	sf	\$ 25	\$ 38,100
2	Sewer & Water	200	lf	\$ 125	\$ 25,000
3	Electrical Connection	95	lf	\$ 175	\$ 16,625
4	Data Connection and devices	960	sf	\$ 25	\$ 24,000
5	Fire Alarm Connection	150	lf	\$ 75	\$ 11,250
6	Fire Alarm Devices	4	ea	\$ 2,000	\$ 8,000
7	Audio Visual	1	alw	\$ 12,500	\$ 12,500
8	30'x32' Portable with Sink and Casework	1	ls	\$ 115,000	\$ 115,000
9	Concrete Foundation	1	ea	\$ 38,500	\$ 38,500
10	Markerboard Wall	112	sf	\$ 45	\$ 5,040
11	Anticipated bid amount	1	ls		\$ 294,015

Project Cost

Description	Quantity	Unit	Unit Cost	Subtotal
Construction Budget	1	ls	\$	294,015
Construction Contingency	10	%	\$	29,402
Architect Fees	1	ls	\$	34,000
Architect Reimbursable Expenses	1	ls	\$	1,020
Blueprinting	1	ls	\$	500
Topographic Survey	1	ls	\$ 7,500	\$ 7,500
Soils Report & Testing	2	%	\$	5,880
CM Fees	4.5	%	\$	13,231
DSA Inspector (Part Time)	2	mos.	\$ 8,000	\$ 16,000
Testing Laboratory	2	%	\$	5,880
Bid Advertisements	1	ls	\$	2,500
DSA Fees	1.2	%	\$ 323,417	\$ 3,881
CGS Fees	1	ea	\$ 3,600	\$ 3,600
CEQA	1	ls	\$ 1,000	\$ 1,000
Legal	1	ls	\$ 1,500	\$ 1,500
Moving Expenses	1	ls	\$ 3,470	\$ 3,470
Grand Total				\$ 423,379

Schedule

Task Name	Duration	Start	Finish
Huff Portable	189 days	Mon 11/30/20	Thu 8/19/21
Schematic Design	29 days	Mon 11/30/20	Thu 1/7/21
BOT Action SD Approval	1 day	Thu 1/21/21	Thu 1/21/21
RFP Portable Manufacturer	20 days	Mon 1/18/21	Fri 2/12/21
Award Portable Piggyback Contract for Portable Manufacturer (Board Action)	1 day	Thu 3/4/21	Thu 3/4/21
Construction Documents	45 days	Fri 1/22/21	Thu 3/25/21
DSA Over-the-Counter	30 days	Fri 3/26/21	Thu 5/6/21
Portable Building Procurement	45 days	Fri 5/7/21	Thu 7/8/21
Bid & Award Site Package	25 days	Fri 4/9/21	Thu 5/13/21
Award Site Package	1 day	Thu 5/20/21	Thu 5/20/21
Construction	50 days	Fri 6/4/21	Thu 8/12/21

Questions/Comments/Discussion