



Mountain View
Whisman
School District

Perimeter Controls

November 5, 2020

Guiding Principles

Guiding Information

- Safety of students and staff
 - Feedback during the Master Facility Planning
 - Safety Town Hall (April 2018)
- Sharing district fields and playgrounds
 - Partnership with the community is valued

Schools/City Agreement

- The fields at the schools belong to MVWSD. MVWSD partners with the City to provide access to the City for community recreational leagues and activities on District-owned land, in return for help from the City in maintaining the grass.
- The City rents the school fields to community groups and uses them as parks after school hours.

Goal 5 Resource Stewardship

- Goal 5: Students, staff and community members will have access to various resources, such as technology, facilities, furniture, equipment, etc., in a fiscally responsible manner, to fulfill the mission of MVWSD.



Mountain View
Whisman
School District

What Is the Need?

Safety

- We are responsible for the safety of 5,200 students and more than 600 staff members every day.
- While many of us enjoy the open campus feel, the reality is:
 - Our staff members regularly have to approach people on campus who are not authorized to be there
 - Dog bites
 - Bike thefts (Had to install bike cages)
- Parents and staff members have shared their concerns about potential violent events

Safety

- Securing our campuses to deter school violence and protect students and staff was a priority with the community (From the Safety Town Hall in 2018).
- Fences as well as cameras were listed in the Master Facility Plan as a priority 1 need. The MFP was approved on December 12, 2019.
- While fences and security cameras will not stop someone who is determined to hurt children and staff they are deterrents.
- It stops individuals from walking onto campus while kids are present. Signs are posted but not followed.

Thought Exchange - Student Voices

Visitor sign in and entrances

"The office should only allow known people into the school and students will feel safe knowing no intruders can get in."

School environment

"Students should be able to feel very safe and secure during school time."

Thought Exchange - Adult Voices

Consider making the campus secured. Right now anyone can walk on campus. No one enforces the stickers and the office blinds are always down

People just walk by the main office right to classrooms. How is that keeping my kids safe?

Frank L. Huff School K-5

4.1 ★★★★★ (21 👤)



The campus perimeter needs to be secured. There should be one secure entrance next to the office and plenty of one way exits.

Stevenson School K-5

3.8 ★★★★★ (13 👤)



There need to be gates at the entrances to the school, and there needs to be someone at the office who is looking out for people entering the campus.

Right now, the blinds at the office are down, and there is no one monitoring campus security. Surely we can afford one employee per school for this.

Frank L. Huff School K-5

4.0 ★★★★★ (14 👤)



Though I like that the grounds are open, anyone can come onto campus during school hours.

It's important that school officials know who is on campus at all times.

Benjamin Bubb School K-5

3.9 ★★★★★ (17 👤)



Master Facility Plan

- Need for secure perimeters at all campuses, especially where schools share public park facilities, trail access, and multiple road frontages.
- Need for real-time situational awareness by school administrators of all external access points onto school campuses during school hours.
- Administrative and community-oriented facilities not situated in the most visible and accessible areas of school campuses.
- Exploring potential outdoor learning spaces; would require secure areas

Master Facility Plan Principal Interviews

Bubb

6. Safety and Security

- a. There is minimal perimeter security along the back of the school campus along Barbara Ave. and Bubb Park. There is no gate to control entry at the SE corner of the campus and no fence or gate at the SW corner to control entry to/from the rear parking lot and along the shared boundary with Bubb Park.
- b. Existing gates in the fence along the park edge are locked. Custodial staff open and lock the gates every day. Students and staff need to be able to exit the site even when the gates are locked (e.g. during an emergency event).

Monta Loma

2. Perimeter Controls

- a. Campus is located alongside and shares use of Monta Loma Park.
- b. Campus has a perimeter fence around its buildings, but not around its parking lots, driveways or outdoor play areas.
- c. While the school and park abut residential properties on three sides, there are two pedestrian access points at the rear of the campus including a pedestrian path to Anna Ave/Elka Ave. and second path to Laura Lane.
 - i. These paths are open at all hours.
 - ii. School needs to have ability to close these off during school hours.

M

COVID 19 Impact

- For COVID safety, we are required to limit contact between the public and students/staff during school hours.
- Staff members have reported that they do not feel safe at work because of members of the public walking onto campus without being screened or wearing masks.
- Staff has cited non-controlled campuses as a reason it is not safe to return



Mountain View
Whisman
School District

Initial Proposal - Timeline and Process

Initial Fencing Plans

- In effort to respond to the legitimate safety concerns from staff and parents and meet Master Facility Planning goals, the District planned for perimeter fencing at all campuses
- At 5 sites, very minimal amount of new fencing; simply adding gates and connecting existing fencing
- By connecting the existing fences and adding a few gates (that automatically will unlock in the evenings and weekends), we can eliminate some of the safety concerns while still giving community members the same access.
- Landels and Monta Loma have more new fencing planned, but again, connects the fencing that is already present at the perimeter.

Initial Fencing Plans Timing

- Laws regarding public works and approval needed from the Division of State Architect (DSA) impacted the process the District would have gone through given the time sensitivity of the project.
- Over the summer the District held multiple COVID safety Focus Groups with parents and staff, Task Force meetings, and conducted a Thoughtexchange to get feedback from every parent and staff member in the district.
- These meetings informed the District's speed at which we needed to move with the perimeter controls due to COVID.

Initial Fencing Plans - City Involvement

- **May 12, 2020** MVWSD communicated with the City about potential perimeter controls
- **May 31, 2020** conceptual drawings were sent for feedback
- **June 1, 2020** received feedback from City via email and adjustments were made.
- **June 3, 2020** meeting to discuss plans with the City.
- **Since September** we have been in contact with the Community Services Department on a regular basis through email and phone calls.

Fencing Proposal and Notification Timeline

Red-non school community
 Blue-School community
 Green-Public meetings

Event	Date	Notification and Methods
Safety Town Hall	2018	Postcard sent to the entire community, school newsletters, social media
Master Facility Plan Planning	2019	Individual meetings with principals conducted by an architect.
Master Facility Plan	December 2019	Approval at public board meeting
Measure T Plans	February 2020	Website, school newsletters, community meetings, social media
COVID Focus Group Meetings, Task Force Meetings, and Thought Exchange	Focus groups May 26, 27, and June 2 Thoughtexchange was held between May 20-28th Reopening Task Force met on June 5 and July 24	Notices sent out via school newsletters and social media.
Public Board Meetings	May 7, June 4, July 2, July 23, and August 6	Perimeter controls were listed as part of the reopening process.

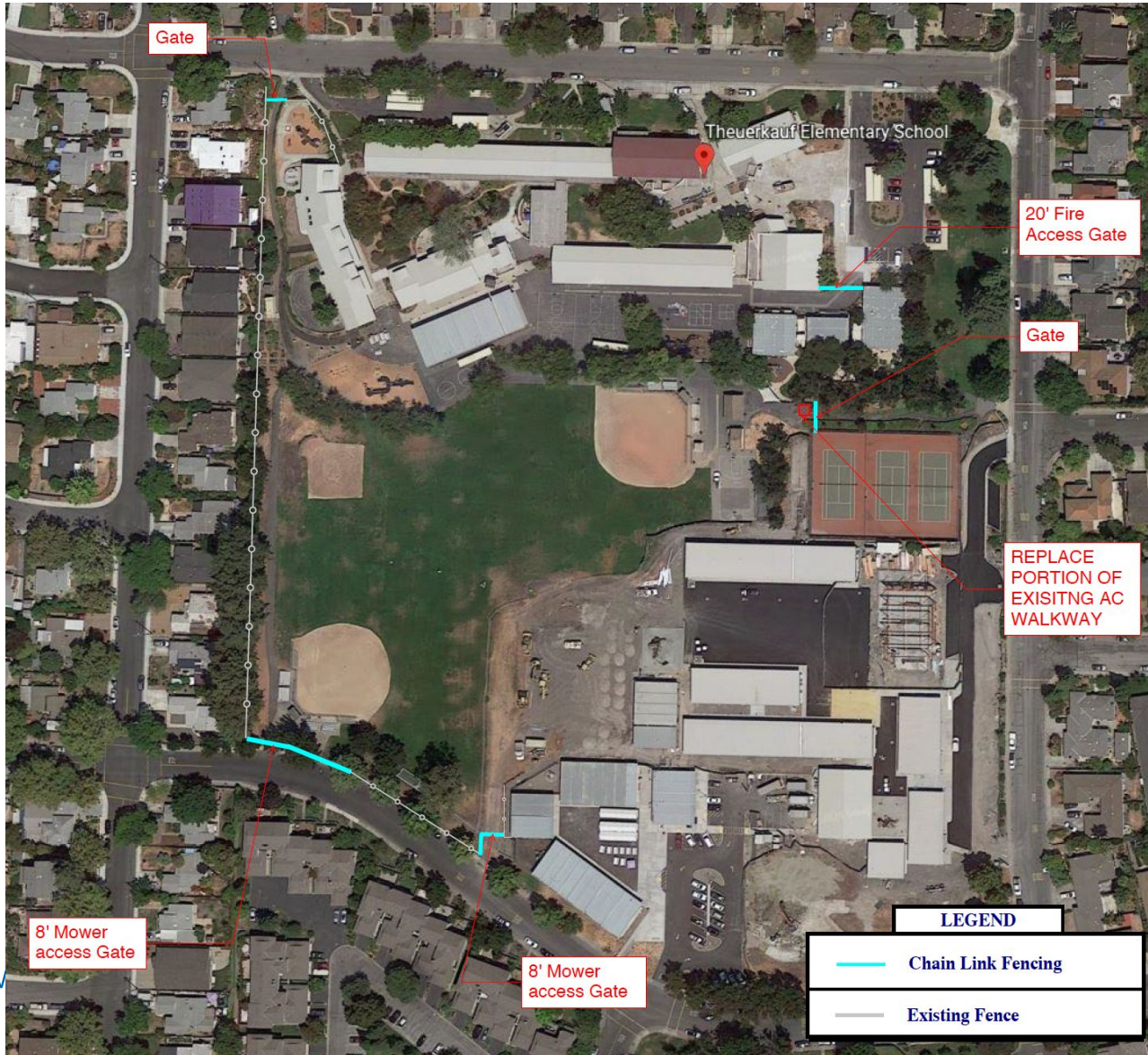
Fencing Proposal and Notification Timeline

Event	Date	Notification and Methods
Meetings with principals	May 22, 2020	email
Approval of HY and Greystone contract	June 18, 2020	On website and streaming
City notification and feedback on plans	May and June of 2020	Multiple email correspondence
Second meeting with principals	July 30, 2020	Email and zoom meeting

Huff Design

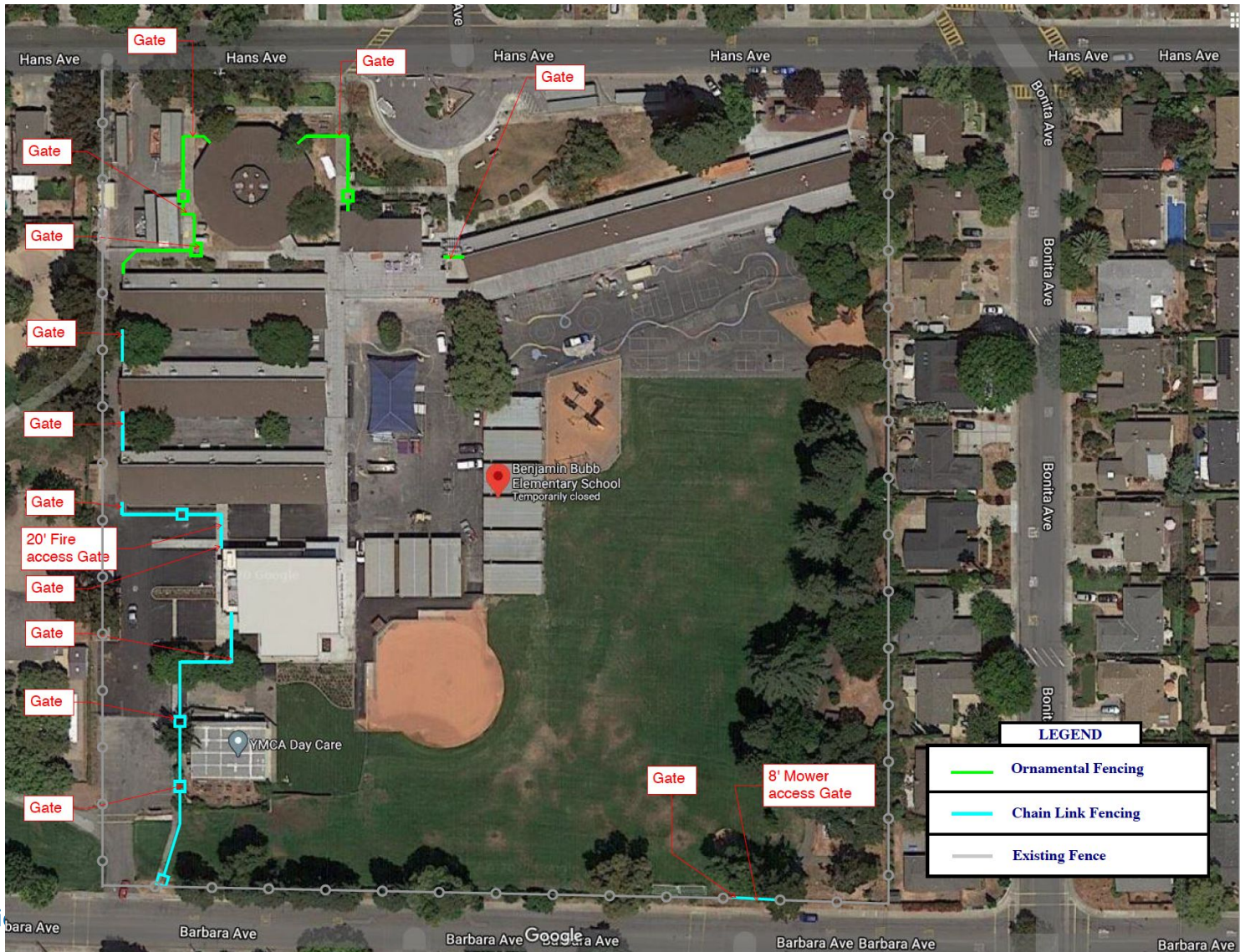


Stevenson/Theuerkauf

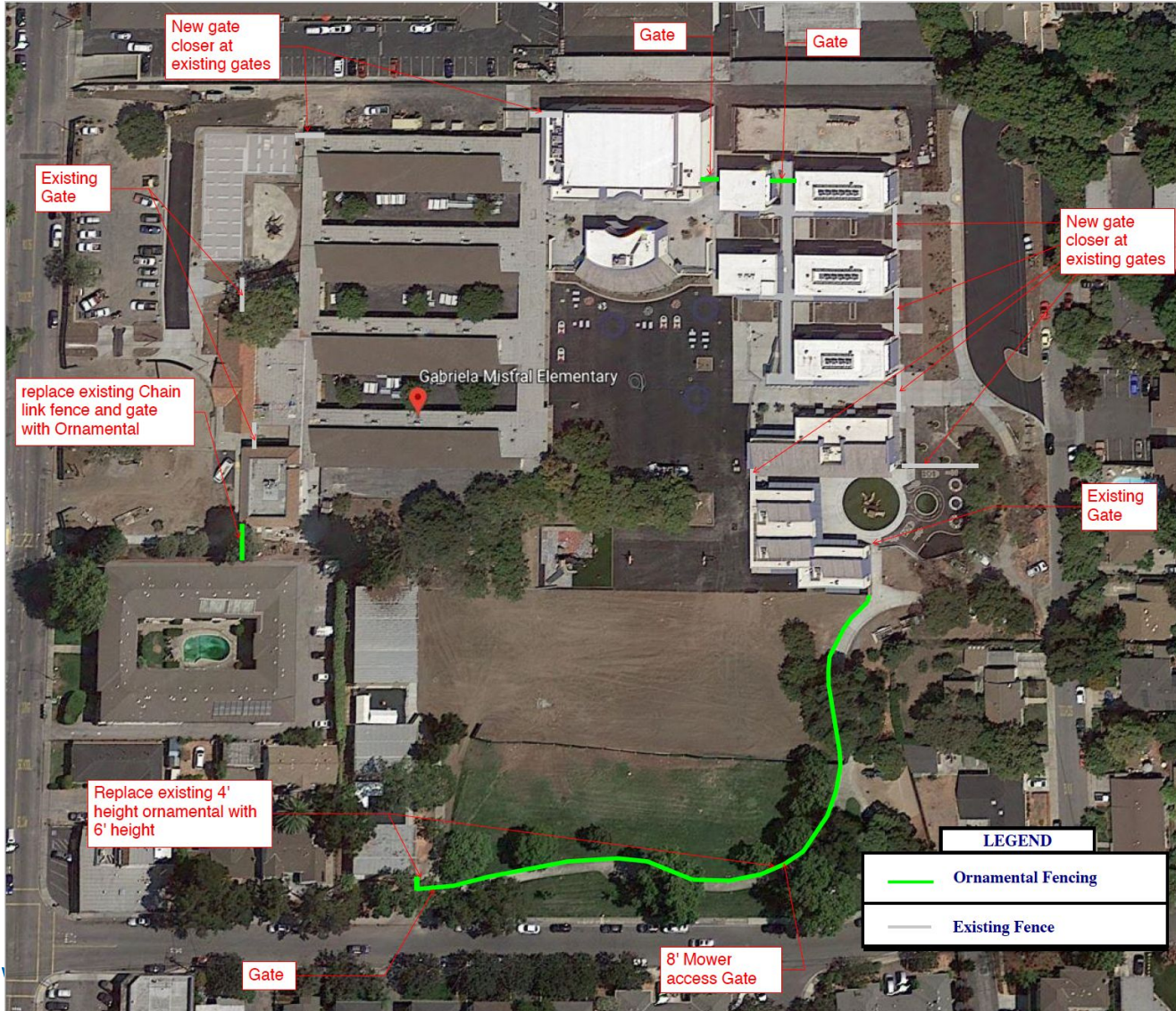


Mountain View W

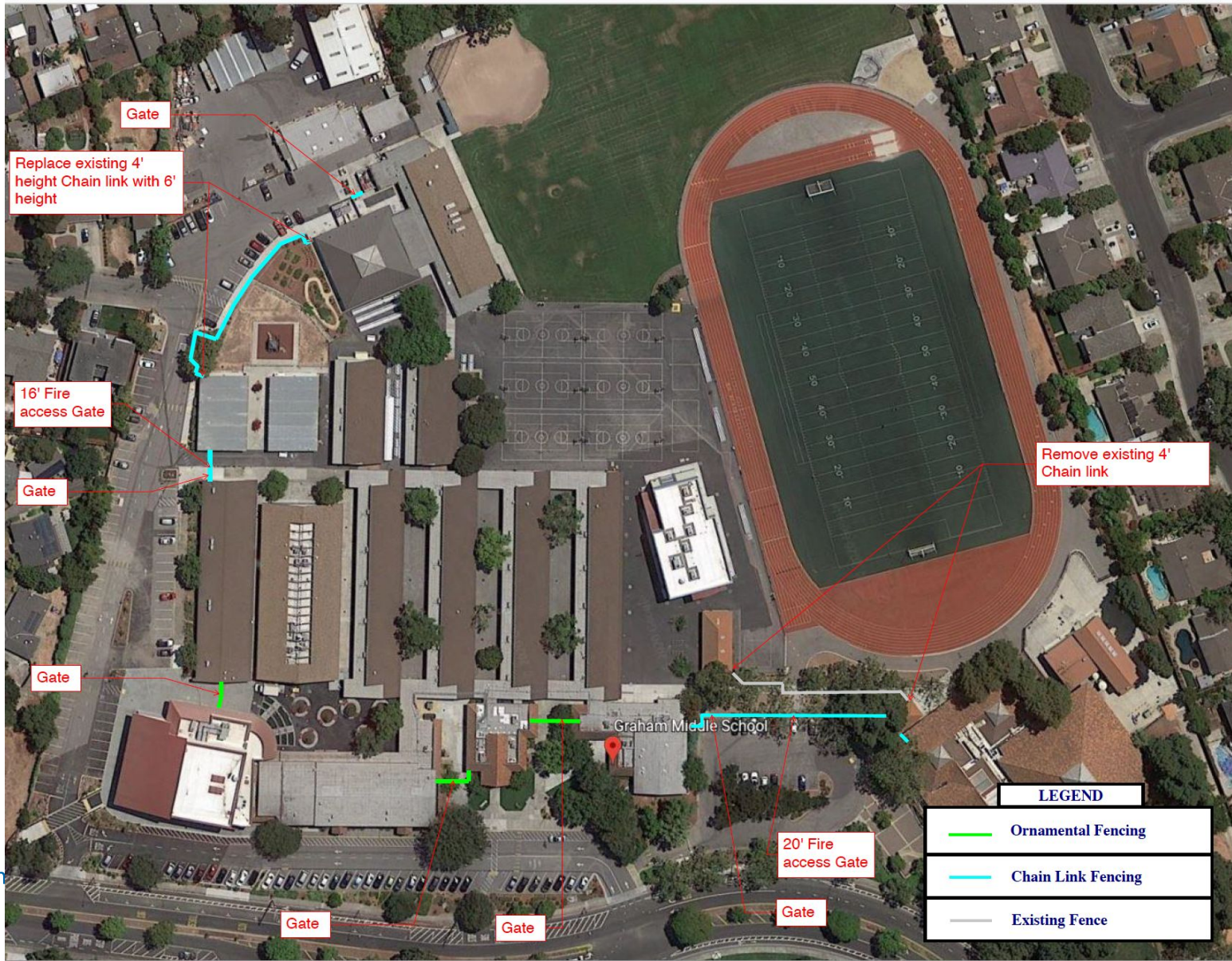
Bubb Design



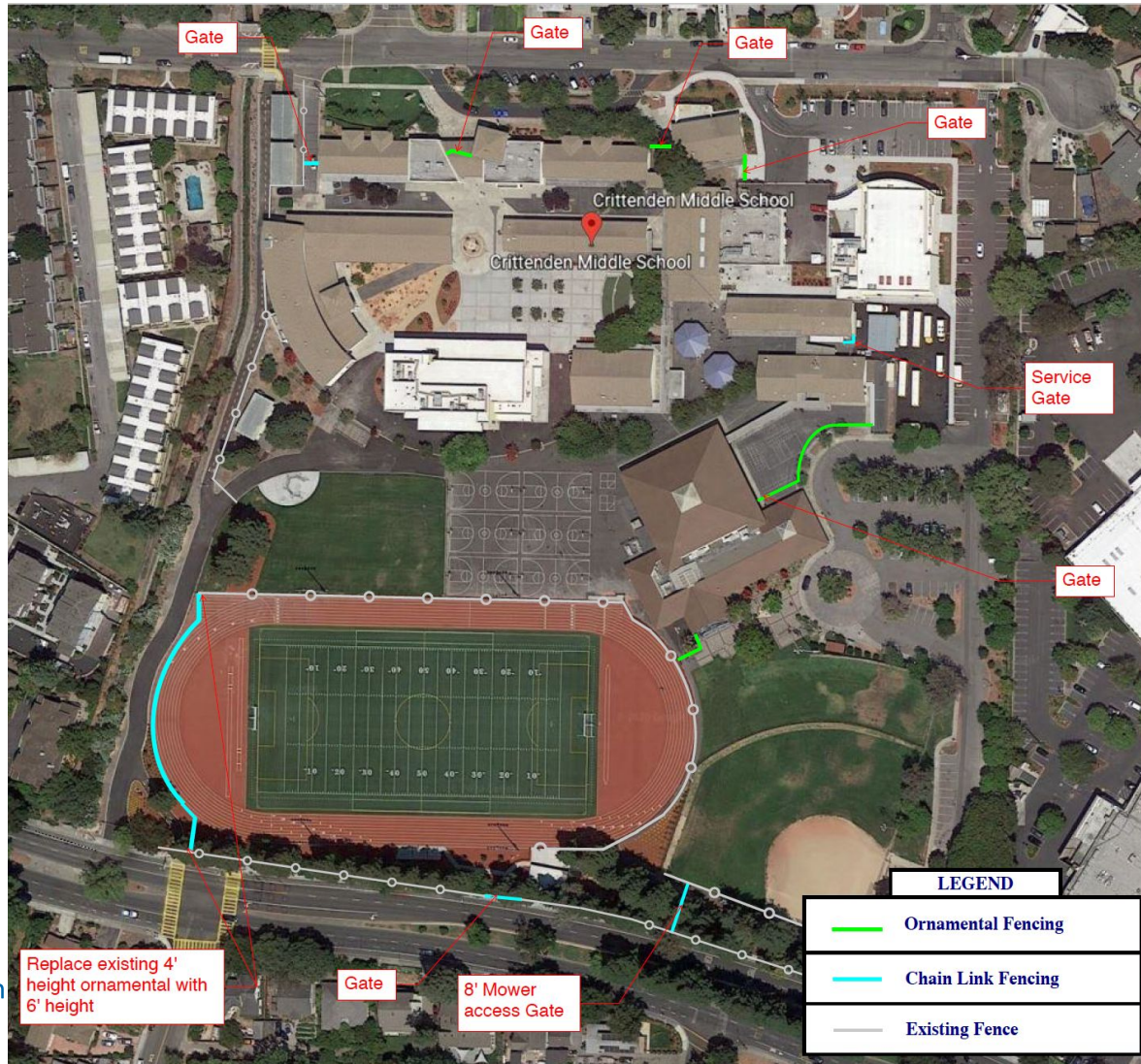
Castro/Mistral/Preschool



Graham



Crittenden

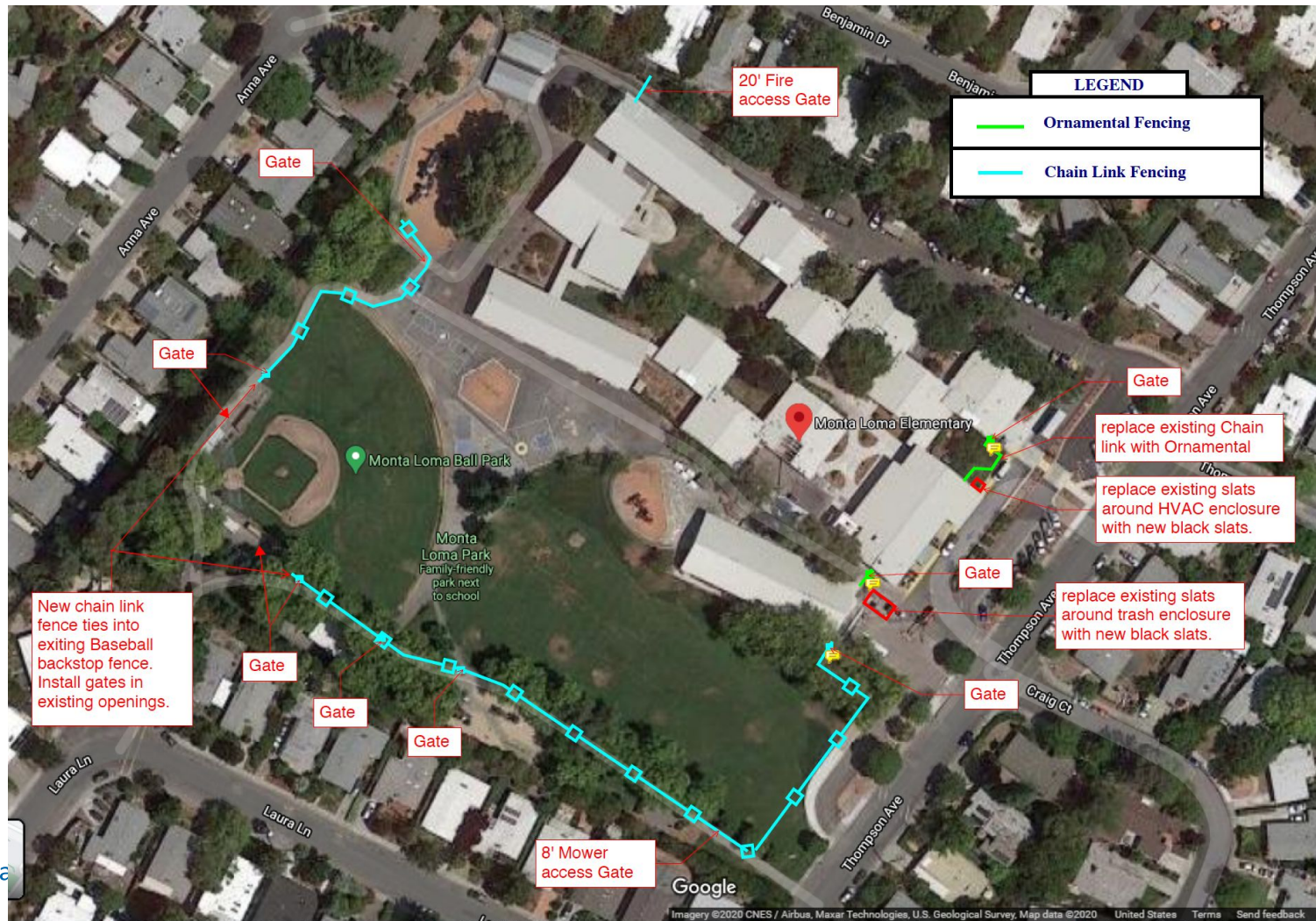


Mountain View Wh

Landels Option #1



Monta Loma Option #1



Field Access Times

- Fields will be accessible as they currently are with no new limitations on residents' access to the fields.
- To ensure that our campus is secure prior to the start of school and as we release our students at the end of the day, the fields will be accessible for pickup and drop off.

Access through automatically opening locks

HES[®] 5000 Electric Strike

Works with cylindrical locksets up to a 5/8" throw latchbolt

The 5000 Series is also available in a Complete One Box Solution



- Gates with automatic locks would unlock after children are out of school.
- Locks will be programmable and signs will be posted for whom residents should call if there are any issues.
- Gates will be unlocked during after school programs.
- If the power goes out we can specify if the gates should be locked or unlocked



Mountain View
Whisman
School District

Initial Community Feedback - October

Feedback on Initial Fencing

- District held 6 community meetings with every school's neighborhood
 - September 29 and October 5, 6, 7, 8, 13
 - Notification through flyer delivery (adjacent neighbors), social media, neighborhood associations, NextDoor, school newsletters
 - 286 residents registered for these meetings
 - Presentation to Parks and Recreation on October 14, 2020

Feedback on Initial Fencing

- Feedback received from Bubb, Huff, Stevenson/Theuerkauf, Castro/Mistral, Vargas (no change in campus), Graham, and Crittenden requested minor changes such as adding gates.
 - Feedback resulted in design changes
- Majority of concerns were from Monta Loma and Landels residents who have expressed that they don't want fences

Feedback on Initial Fencing

Monta Loma-

- Residents said that it's the only access to green space and that a fence would make it feel closed off.
- Some of stated that they only use the field when children are not on it and/or leave when asked.

Landels

- Individuals that have property that runs along the field do not want their gates to the field to be blocked.
- Want to have easy access to the field.

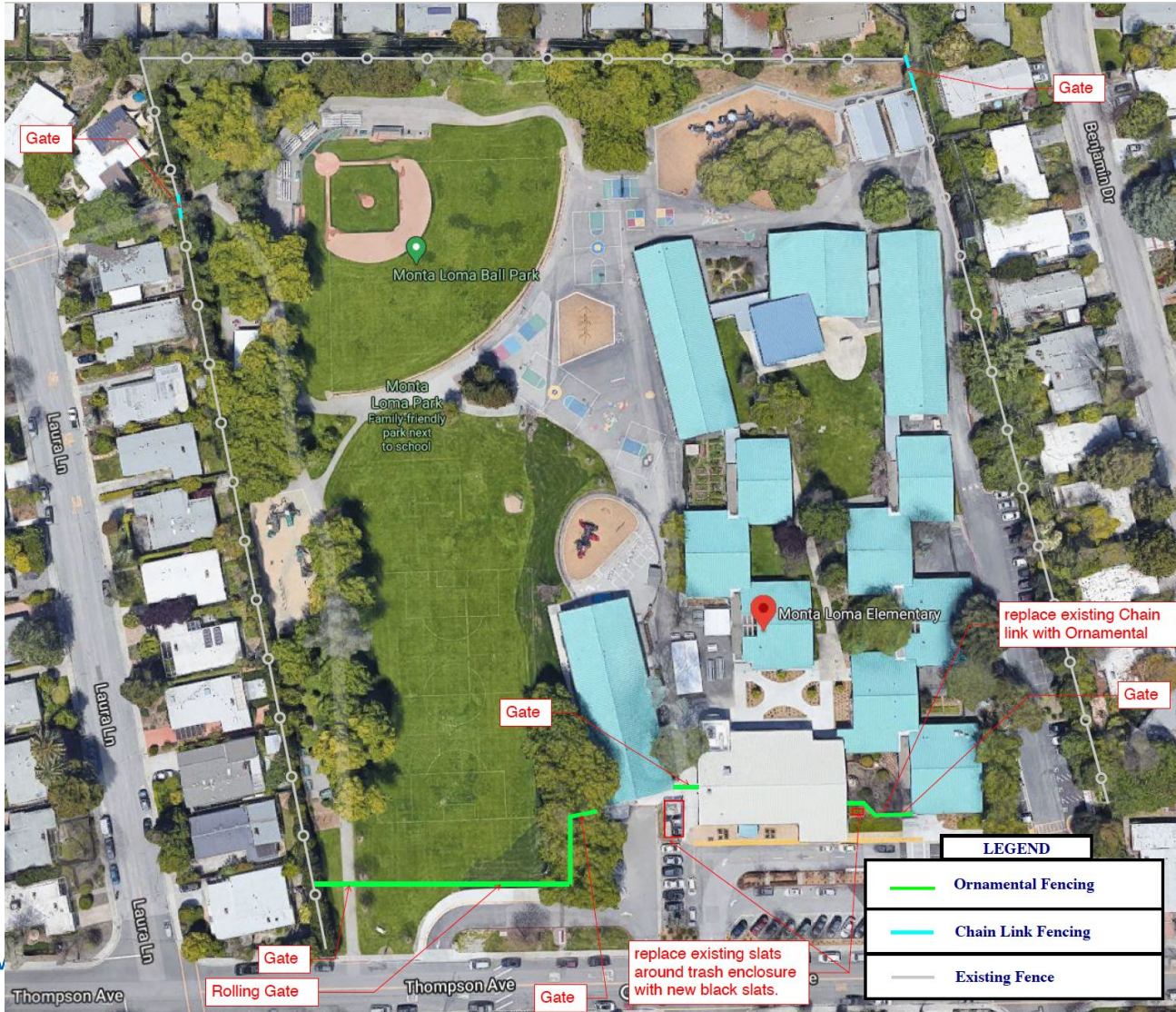
Both

- Misconception that the times they will be allowed to use the fields would be limited

Adjustments Made Based on Feedback

- Making sure staff can easily come and go during the school day easily (not shown)
- Having automatic locks at all new gates that can be remotely opened.
- Changing the color of fencing at some locations.
- Repositioning the fencing at some locations
- Adding additional gates at some locations
- Consider landscaping (not shown)
- Adding more signage that clearly indicates hours of use and who to call if there is an issue (not shown)

Possible Monta Loma Option #2



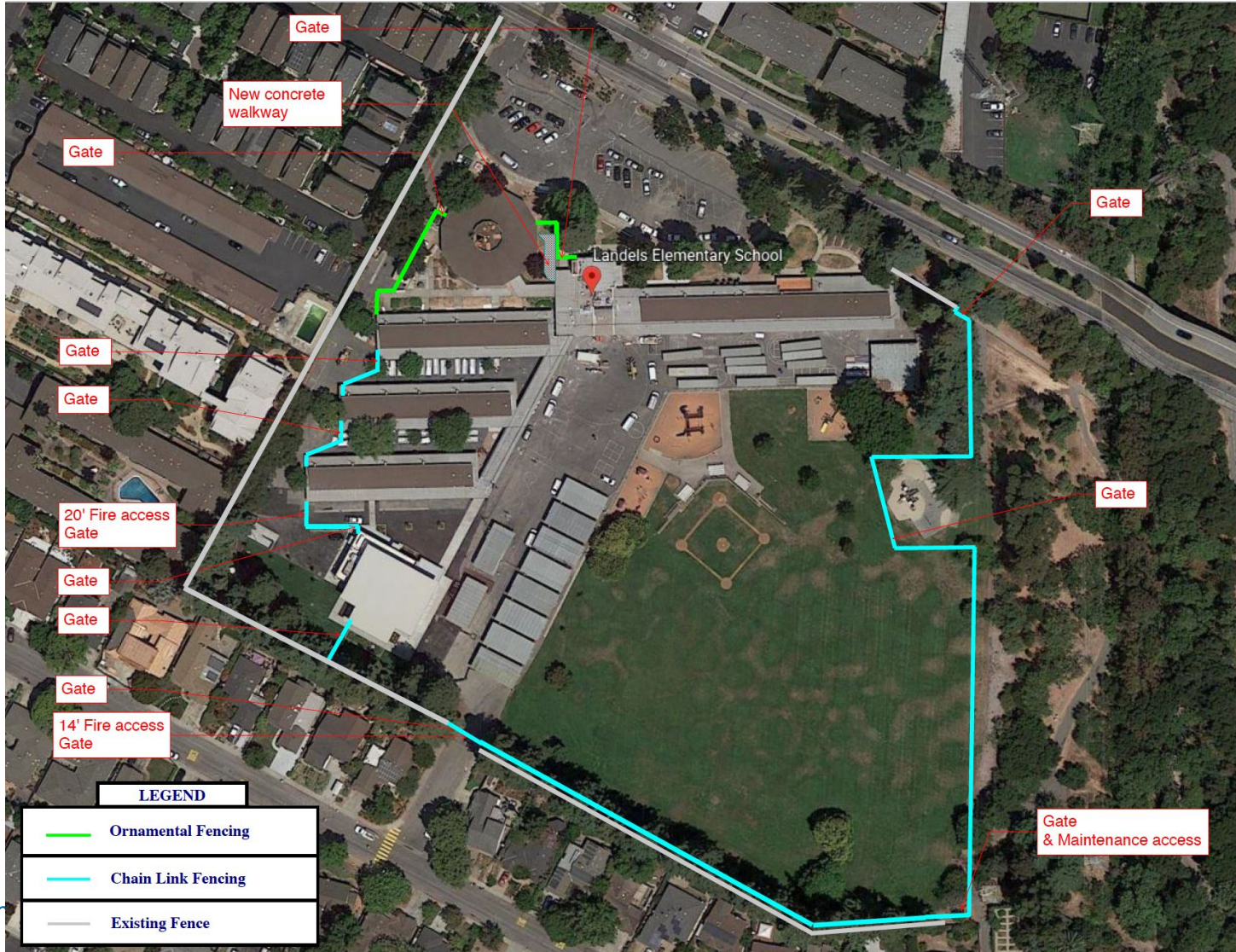
Gate Options



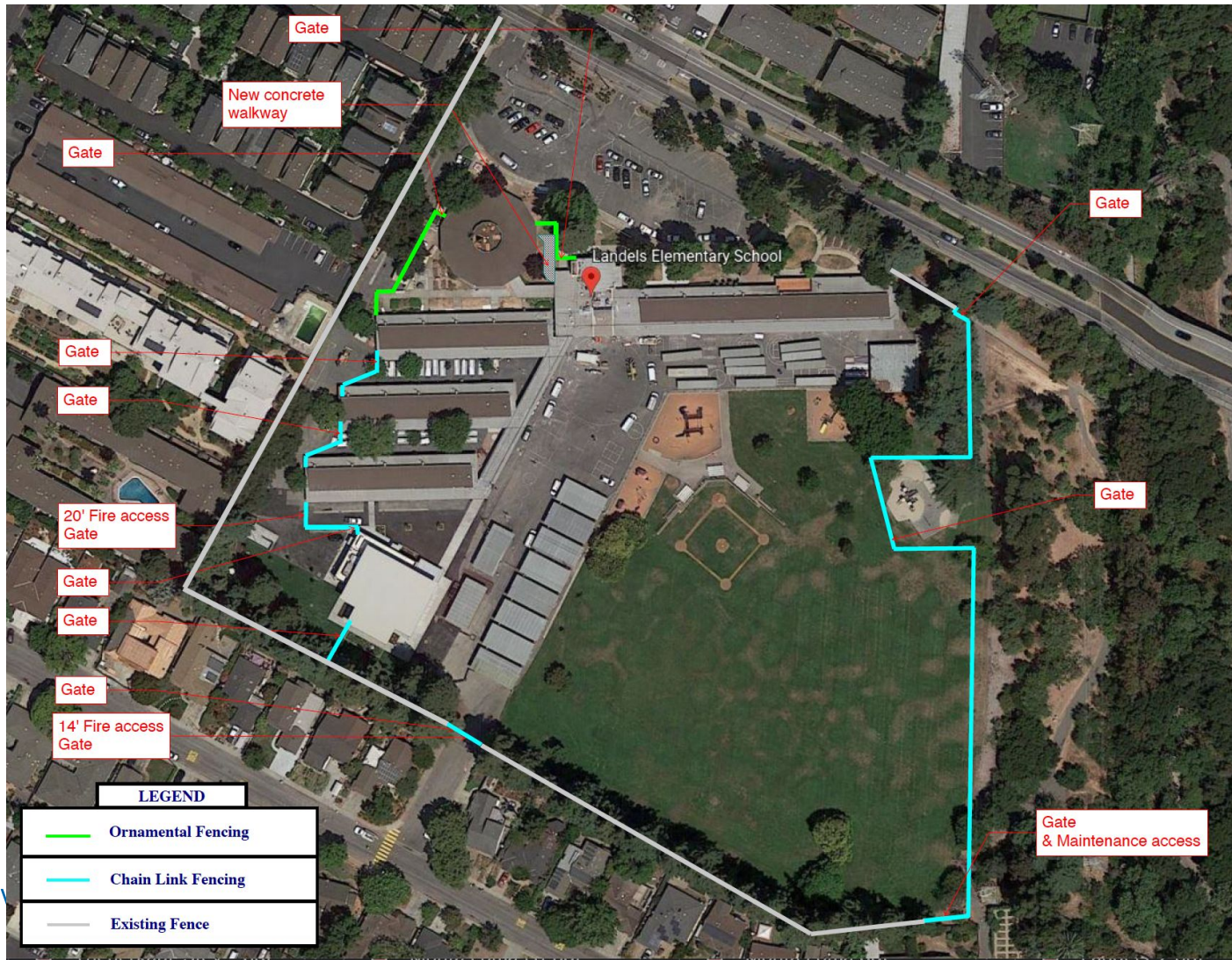


Mountain View Whisman School District

Possible Landels Option #1



Possible Landels Option #2





Mountain View
Whisman
School District

Where Do We Go From Here?

Lessons Learned

- We treated this as a construction project, rather than a community engagement opportunity
- The engagement we did was not enough/the right type
- Residents were not aware of issues with safety, dogs, strangers on campus
- Especially during COVID, residents rely on school-owned green space (44% of MV parkland)
- Community can be a source for solutions

We Need to Work Together to Find a Solution

- Staff, parents and students have reported that they feel unsafe due to open campuses.
- We have a responsibility to address the concerns and take preventative measures. Not doing anything is not an option.
- The answer does not have to be a fence but we have to address the concerns.

Engagement Process - for Monta Loma and Landels

Gather interested individuals from the community, school site staff, parents, and Parks and Recreation to be part of a work group	November 9-18
Hold meetings in which groups will work together to develop solutions within the District's limitations.	November - December
Report the work group discussions to the Board with a recommendation.	January

- We will take as much time as needed for this process but we need to address the issues that face both schools.

Process for Other School Sites

- Letter will be sent out to the community with the changes made based on their feedback
- CBO will offer to meet with residents who would like to provide more feedback on the school site.
- Fencing at CA/MI, TH/ST, GR, CR, HU and BU will move forward as planned
- Construction could possibly begin in late Nov.

Next Steps

- Engage community
- CBO will make a recommendation to the Superintendent based on all feedback and ideas received for ML and LN.
- The Superintendent will then make a recommendation to the Board (possibly the Nov. 19 meeting) before construction at ML and LN.



Mountain View
Whisman
School District

Questions and Discussion