

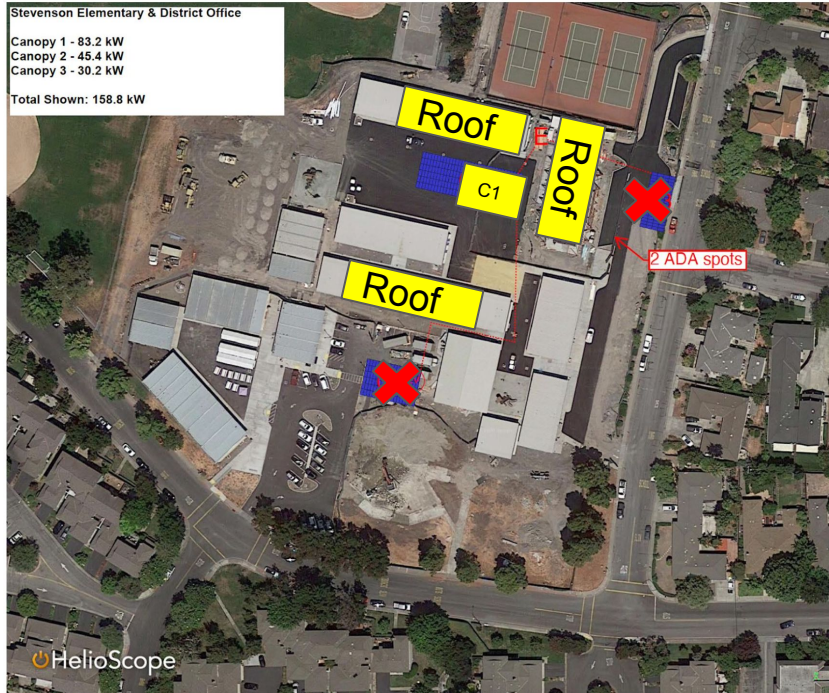


Canopy-Solar Shade Footprint and Plans at Stevenson

Kim Reynolds, PACT Foundation

October 1, 2020

Proposed Solar Structures at Stevenson



*EV charging station added to Stevenson's parking lot

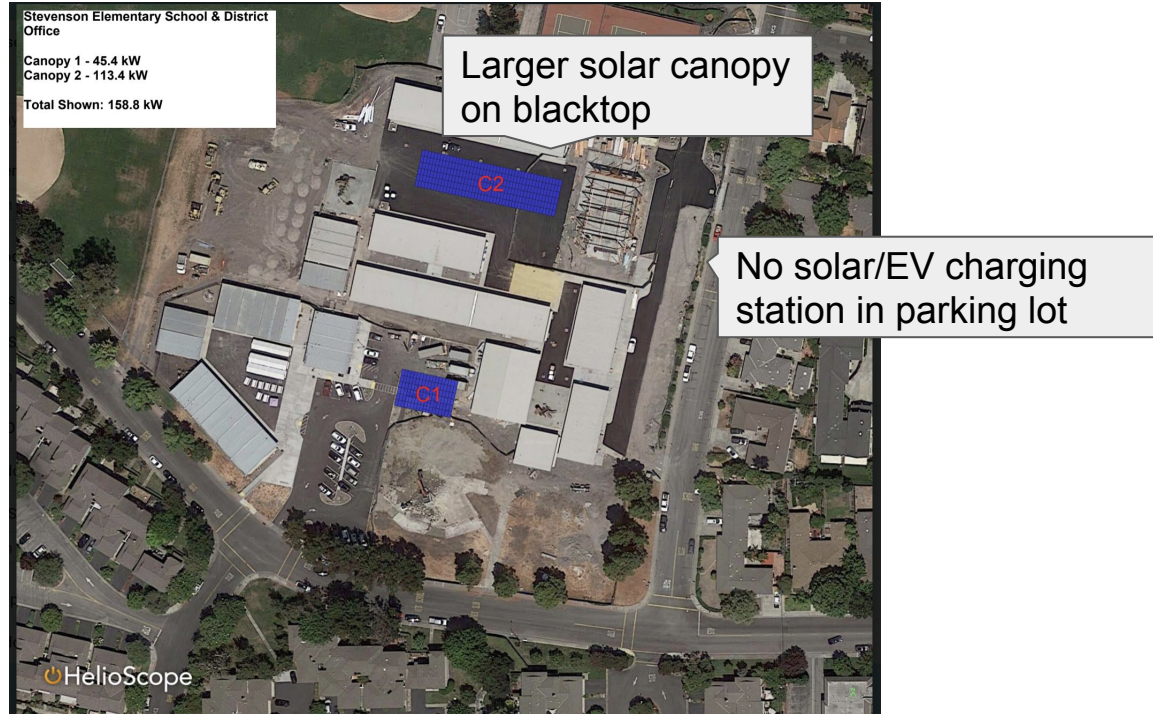
Spring 2020



*EV charging station added to Stevenson's parking lot

September 17, 2020

Proposed Solar Structures at Stevenson



September 28, 2020

Future position of solar canopy on blacktop



Hooks for student backpacks, with food and water

Tables for snack and lunch

Overhangs at MVWSD Sites with East-West orientation provide shade



Monta Loma



Mistral



Bubb, Landels, Huff

Small overhang at Stevenson doesn't shade backpacks



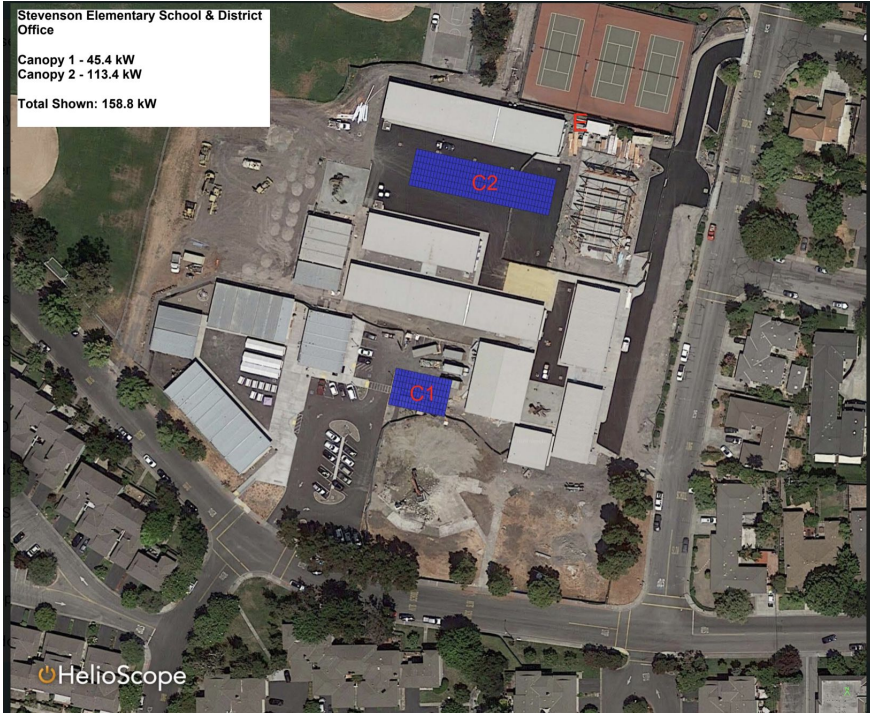
Hooks for student backpacks, with food and water

The original plans for Stevenson had a larger overhang to shade backpacks.

The larger overhang was cut from the plans due to limited Measure G funding.

Now, student snacks and lunches get too hot in their backpacks and spoil.

Possible Solution: September 28 proposal by MVWSD office



One large Canopy that shades Lunch Tables and Building

- Location, dimensions, and mounting angle are critical - canopy may or may not shade all classrooms and lunch tables
- Small campus makes space use a real concern - limits play area and future greening and outdoor learning space

Possible Solution: proposal for consideration by Stevenson



*EV charging station added to Stevenson's parking lot

- Two canopy-style solar structures and an overhang
 - Similar to September 2020 option
 - 1 on Blacktop to shade lunch tables
 - 1 on Parking Lot with EV Outlets
 - Add an Overhang above Rooms 13-18
- Location, dimensions, and mounting angle of the solar canopy on the blacktop is less critical with overhang
- Leaves more free space for students to play at recess and for future greening or outdoor learning spaces

Stevenson Community Requests

- Recent proposals need to be considered by the Stevenson Community.
 - Postpone the final solar contract vote until after our October 13 PACT Foundation meeting, so we can gather community feedback to share with MVWSD Office and Trustees
- If the PACT Foundation Proposal is an option, then
 - Confirm that funds exist to install the overhang along rooms 13-18
 - This was previously funded with Measure G, but it was cut due to budget constraints
- If moving forward with either of the September options, then
 - Final location, dimensions, mounting angle and shade footprint be provided
 - Critical to ensure lunch tables and ideally backpacks are shaded without compromising the limited play space and future outdoor learning spaces we may have