



Mountain View  
Whisman  
School District

# Enrollment Update

September 17, 2020



# Alignment to Strategic Plan

## Goal 1: Student Achievement

- Every student will be prepared for high school and 21st Century citizenship.

## Guiding Principles for Reopening - Principle 3:

- Create high-quality, equitable learning environments for all students

## Board of Trustees Goal:

- Place all students at their neighborhood schools

# Enrollment Update

- Enrollment determines number of teachers at each site:
  - Staffing Ratio: schoolwide *averages* in the following grades Kindergarten through 3<sup>rd</sup> grades: 24:1
  - 4th and 5th grades: 30:1
  - 6th, 7th and 8th grades: 180 contacts per day or 33 in any one core class period
- Students do not come in “groups of 24”

# Things to Remember

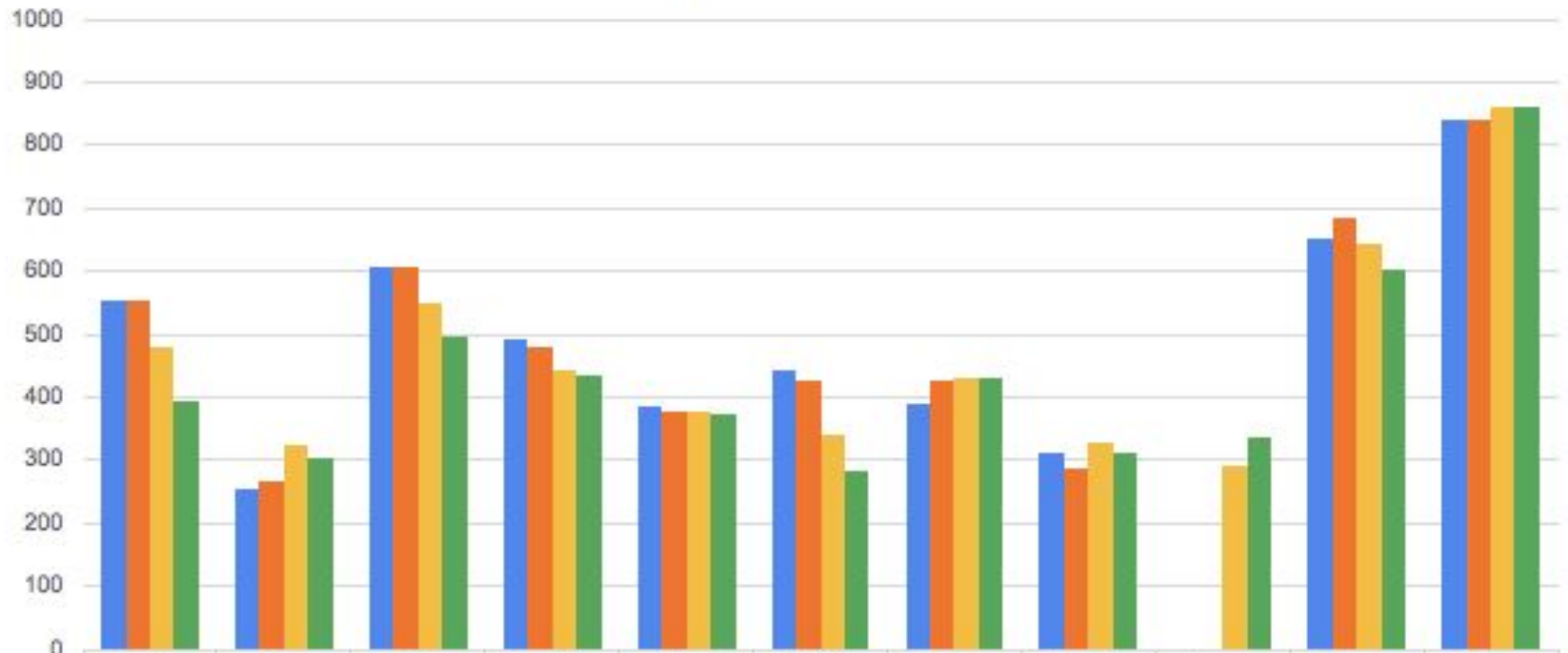
- 2020-21 is the first year the new boundaries are fully implemented
- Some families have been hesitant to enroll young students into a distance learning program
- Some families have chosen other options due to work related needs or concerns about the distance learning experience in the spring



Mountain View  
Whisman  
School District

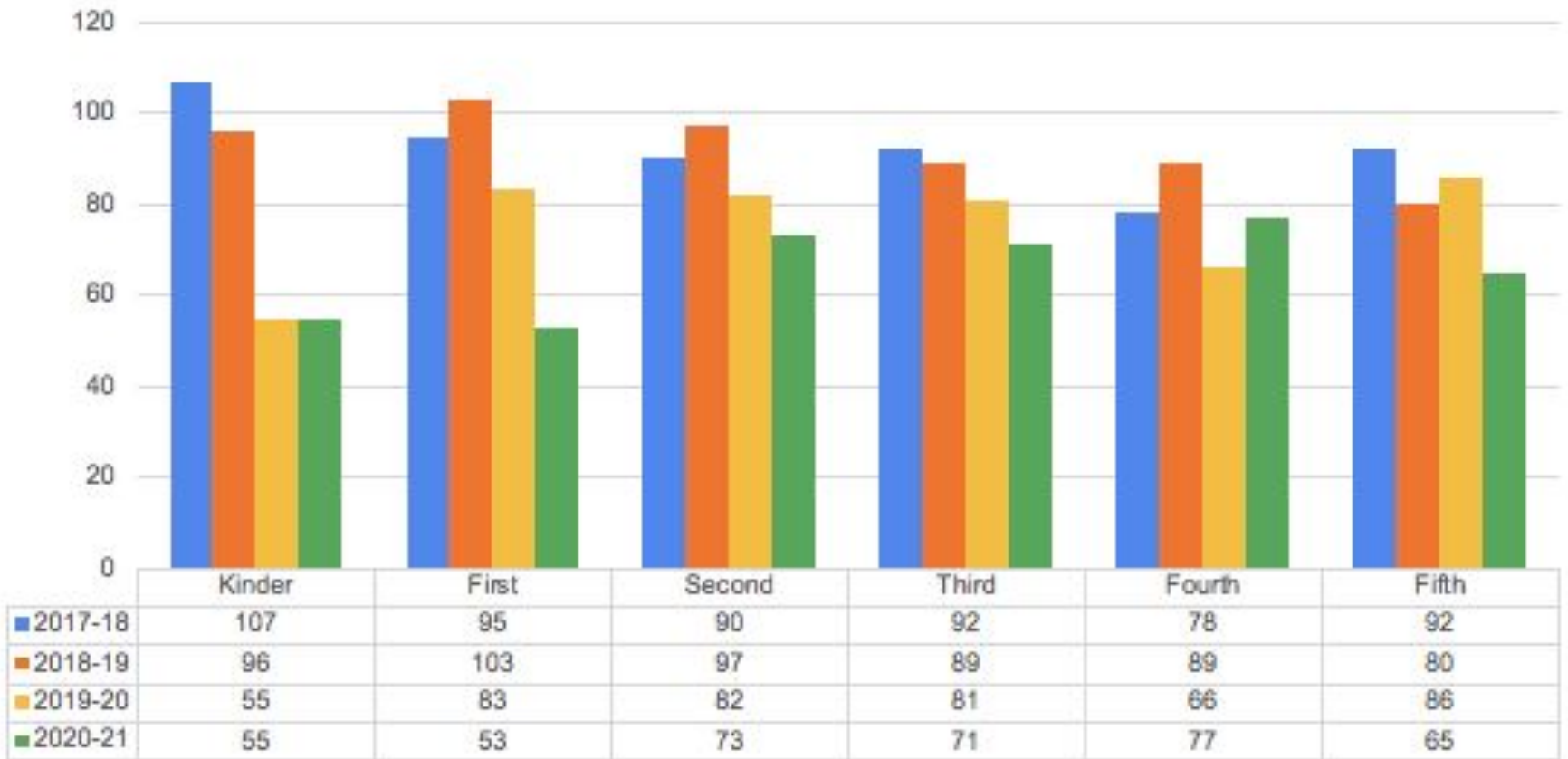
# Enrollment Updates by School Site *September 2017 to September 2020*

## Enrollment Counts 2017-2020

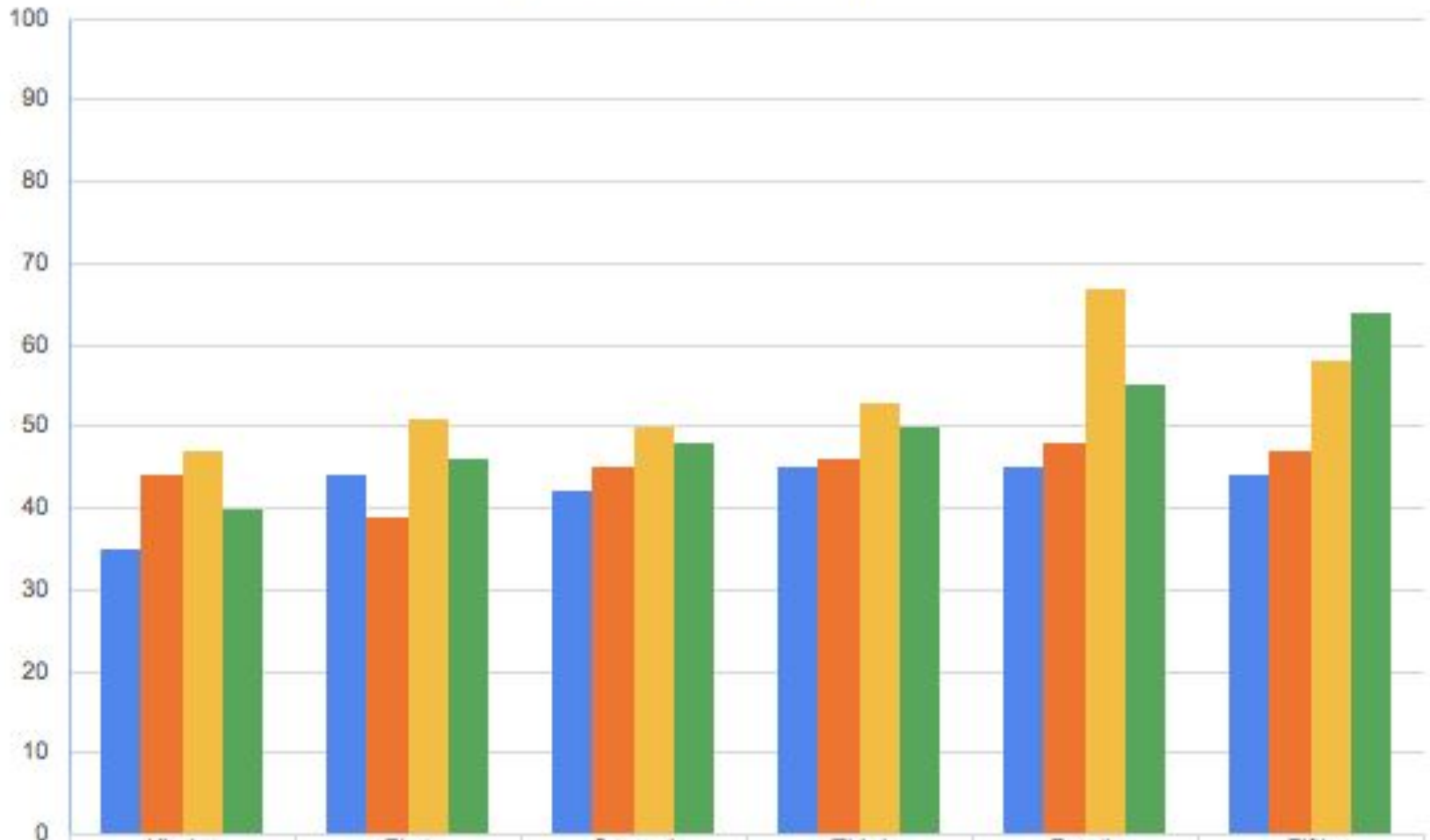


	Bubb	Castro	Huff	Landels	Mistral	Monta Loma	Stevenson	Theuerkauf	Vargas	Crittenden	Graham
■ 2017-18	554	255	608	493	388	444	391	314		652	842
■ 2018-19	554	269	606	480	377	425	428	286		685	843
■ 2019-20	479	326	549	445	379	342	431	330	293	646	860
■ 2020-21	394	303	497	437	372	284	432	314	336	604	862

## Bubb Enrollments by Grade



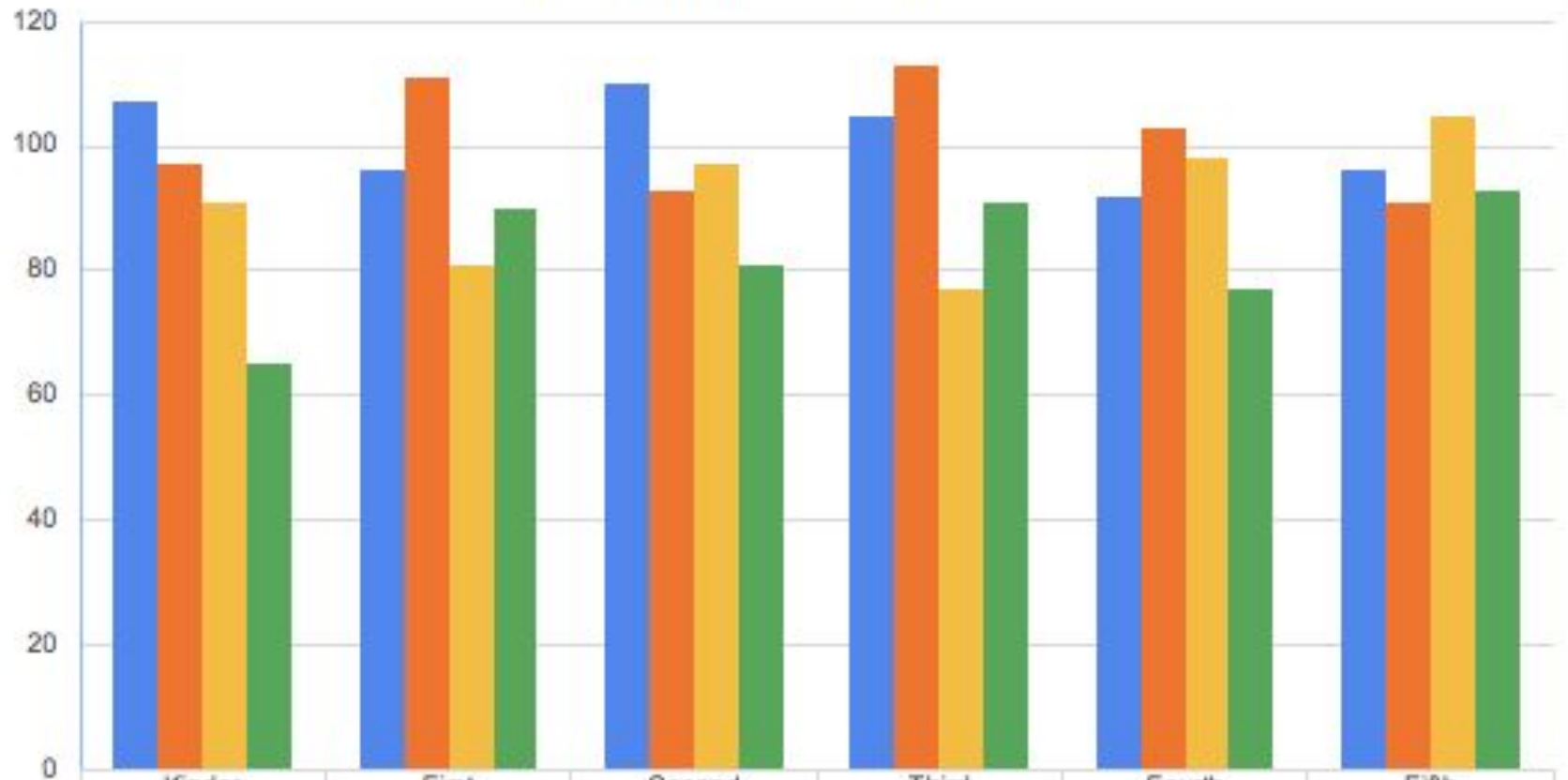
## Castro Enrollment by Grade



	Kinder	First	Second	Third	Fourth	Fifth
2017-18	35	44	42	45	45	44
2018-19	44	39	45	46	48	47
2019-20	47	51	50	53	67	58
2020-21	40	46	48	50	55	64

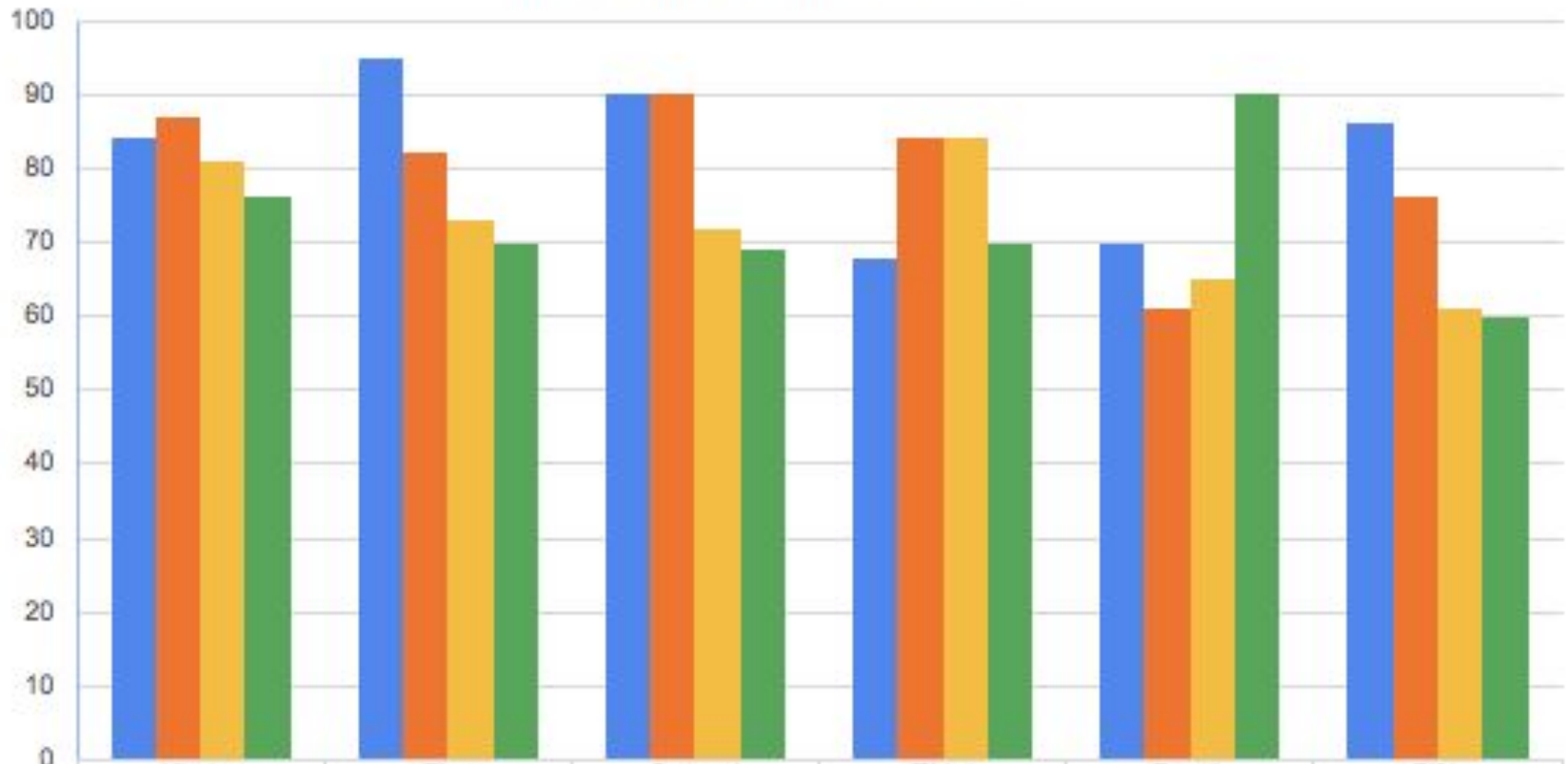


## Huff Enrollment by Grade



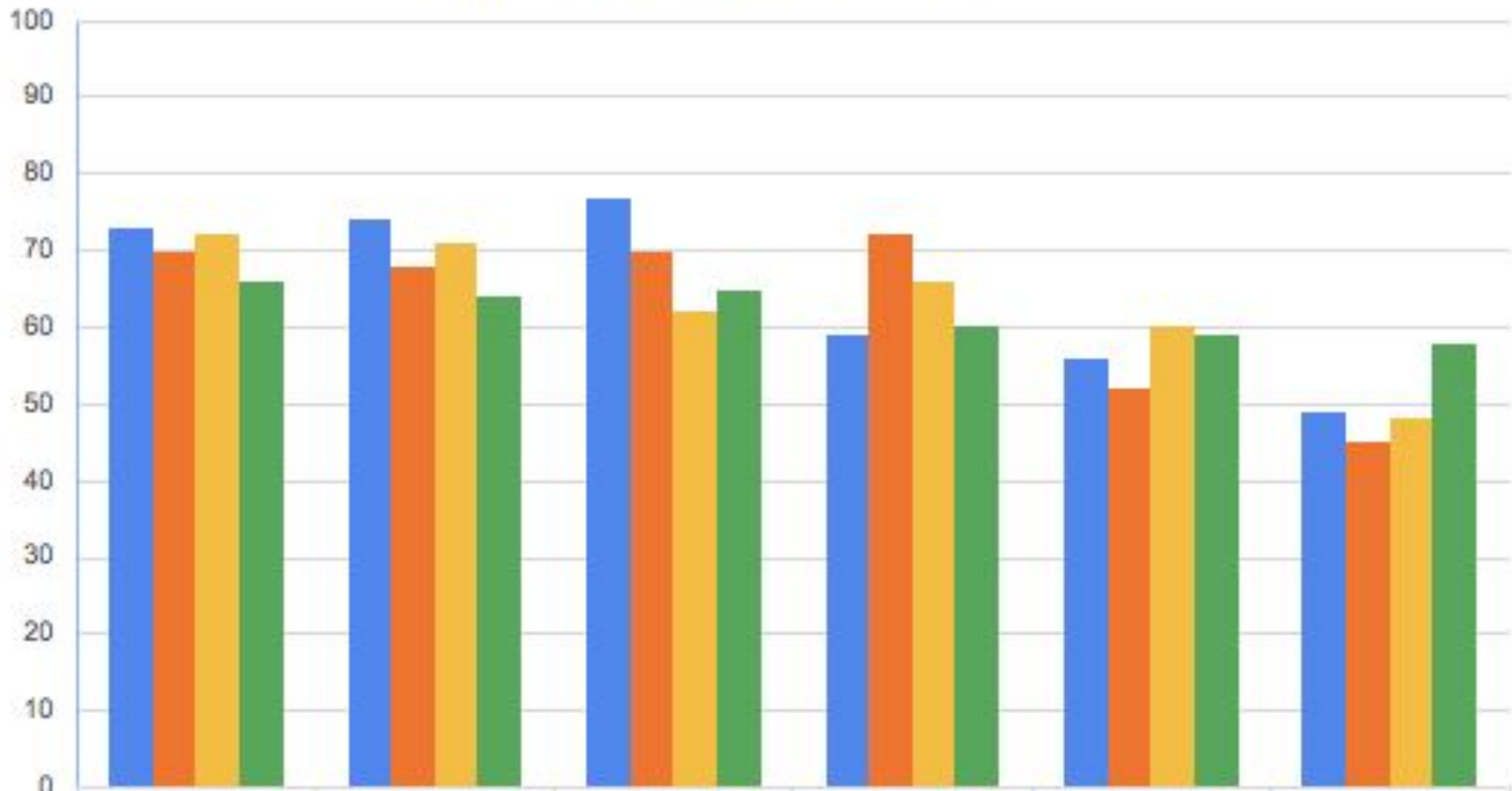
	Kinder	First	Second	Third	Fourth	Fifth
■ 2017-18	107	96	110	105	92	96
■ 2018-19	97	111	93	113	103	91
■ 2019-20	91	81	97	77	98	105
■ 2020-21	65	90	81	91	77	93

### Landels Enrollment by Grade



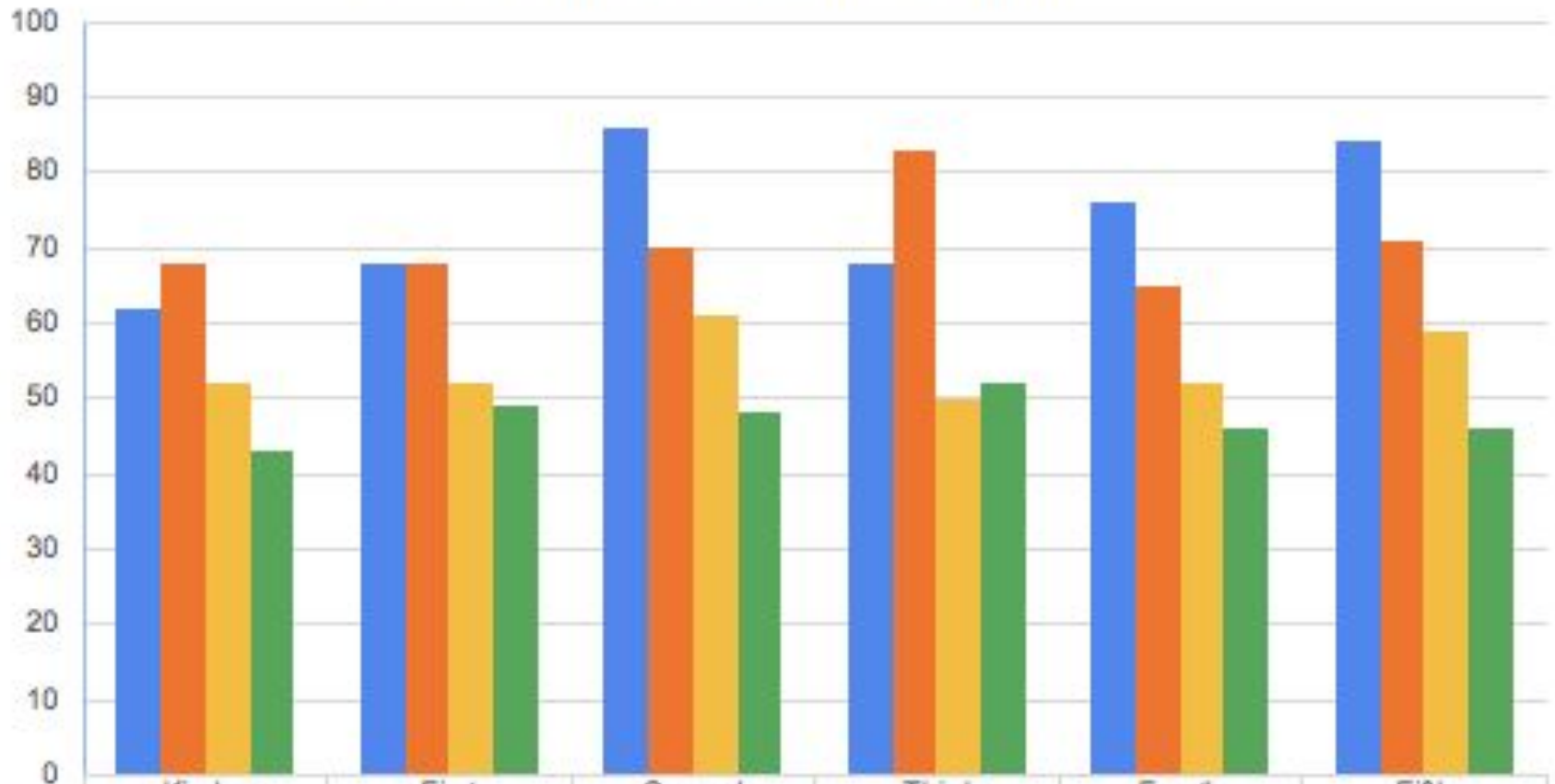
	Kinder	First	Second	Third	Fourth	Fifth
■ 2017-18	84	95	90	68	70	86
■ 2018-19	87	82	90	84	61	76
■ 2019-20	81	73	72	84	65	61
■ 2020-21	76	70	69	70	90	60

## Mistral Enrollment by Grade



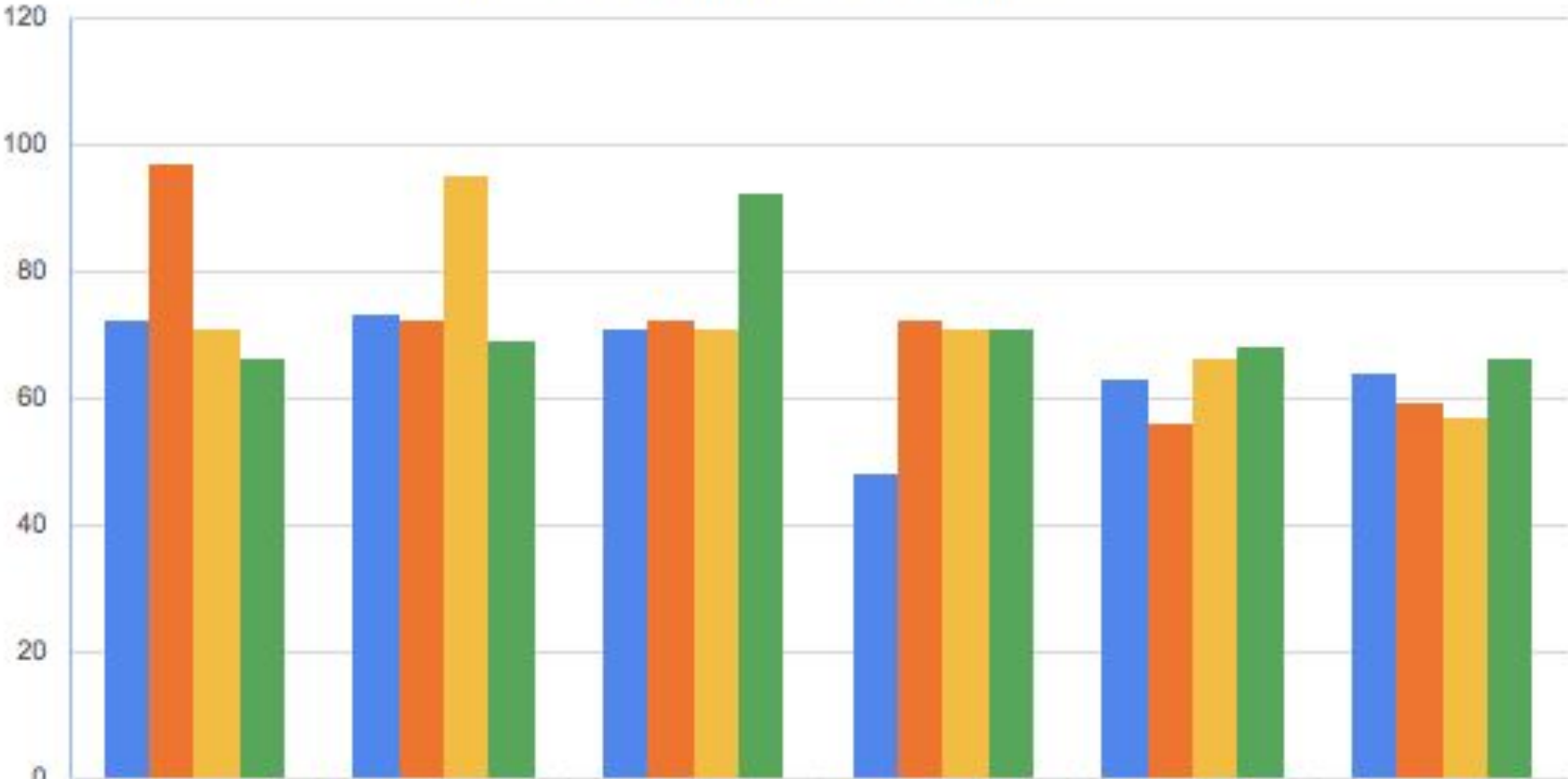
	Kinder	First	Second	Third	Fourth	Fifth
■ 2017-18	73	74	77	59	56	49
■ 2018-19	70	68	70	72	52	45
■ 2019-20	72	71	62	66	60	48
■ 2020-21	66	64	65	60	59	58

## Monta Loma Enrollment by Grade



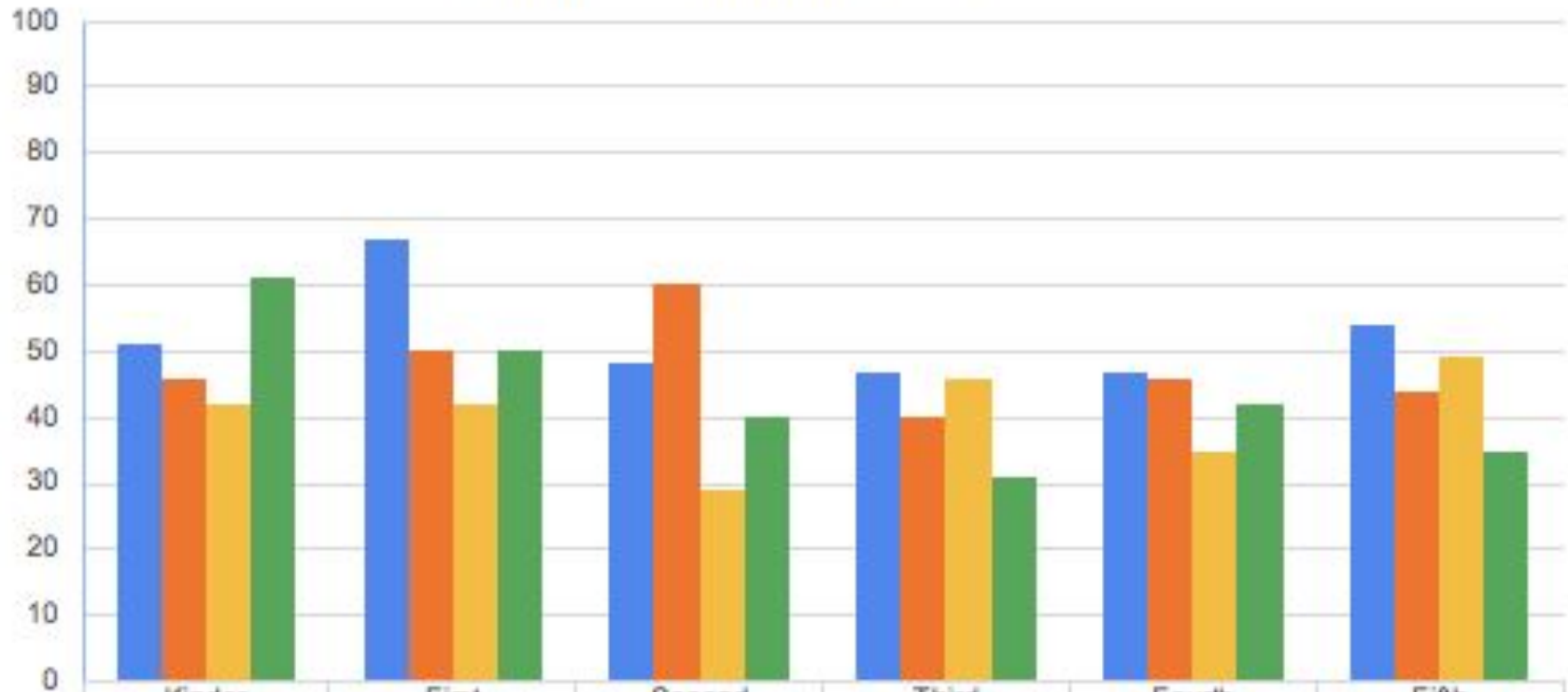
	Kinder	First	Second	Third	Fourth	Fifth
■ 2017-18	62	68	86	68	76	84
■ 2018-19	68	68	70	83	65	71
■ 2019-20	52	52	61	50	52	59
■ 2020-21	43	49	48	52	46	46

# Stevenson Enrollment by Grade



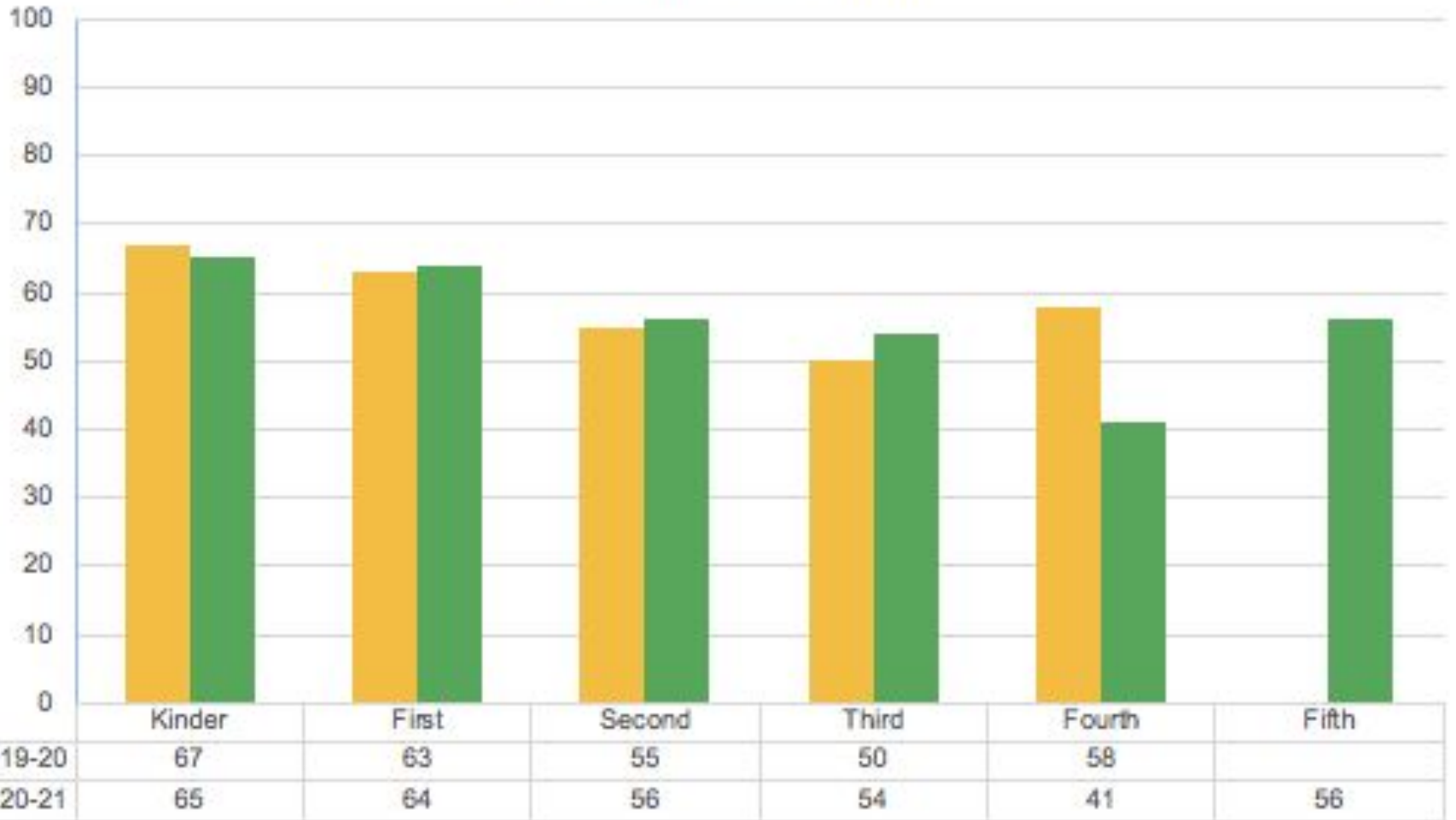
	Kinder	First	Second	Third	Fourth	Fifth
■ 2017-18	72	73	71	48	63	64
■ 2018-19	97	72	72	72	56	59
■ 2019-20	71	95	71	71	66	57
■ 2020-21	66	69	92	71	68	66

## Theuerkauf Enrollment by Grade

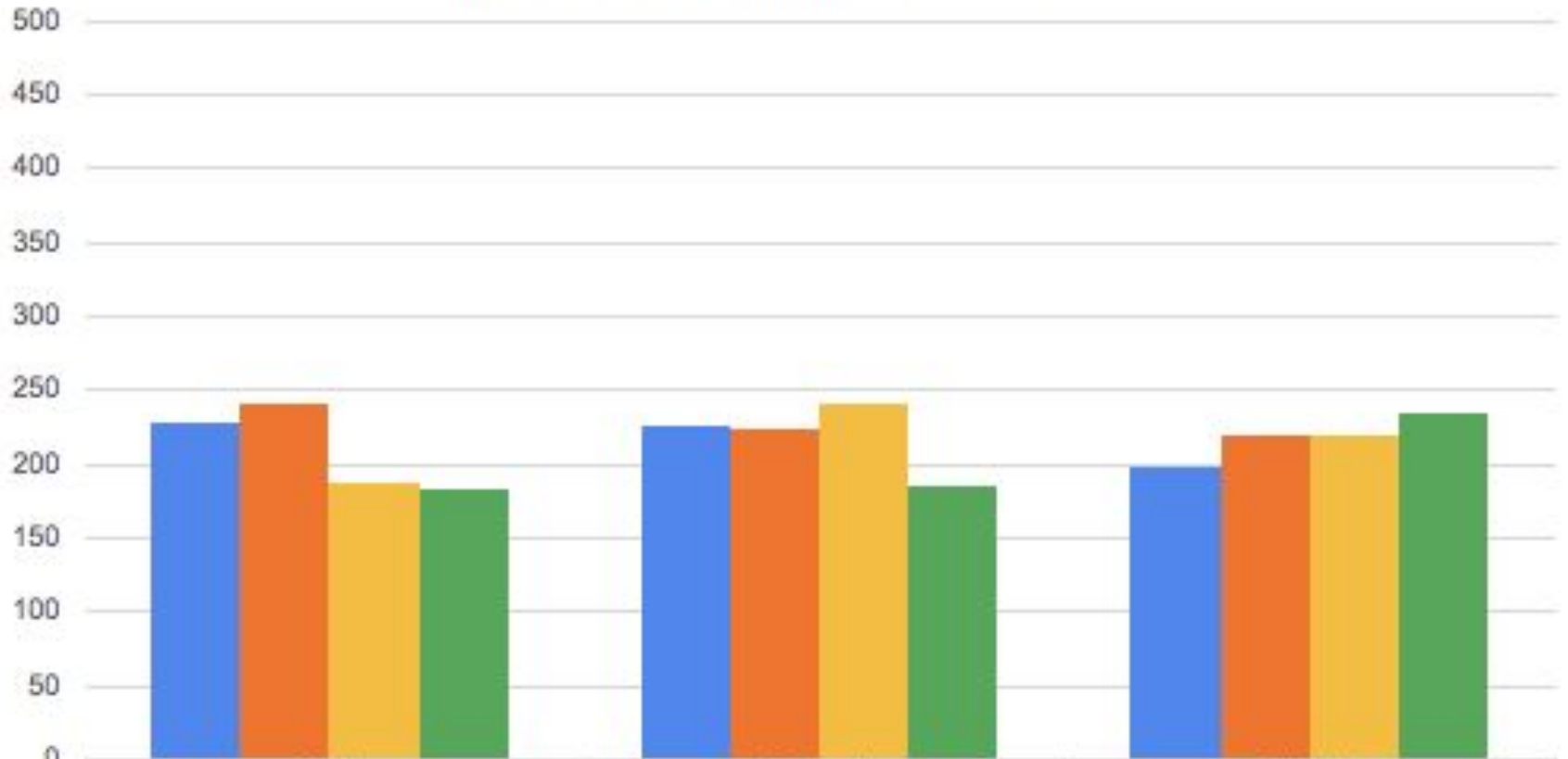


	Kinder	First	Second	Third	Fourth	Fifth
■ 2017-18	51	67	48	47	47	54
■ 2018-19	46	50	60	40	46	44
■ 2019-20	42	42	29	46	35	49
■ 2020-21	61	50	40	31	42	35

## Vargas Enrollment by Grade



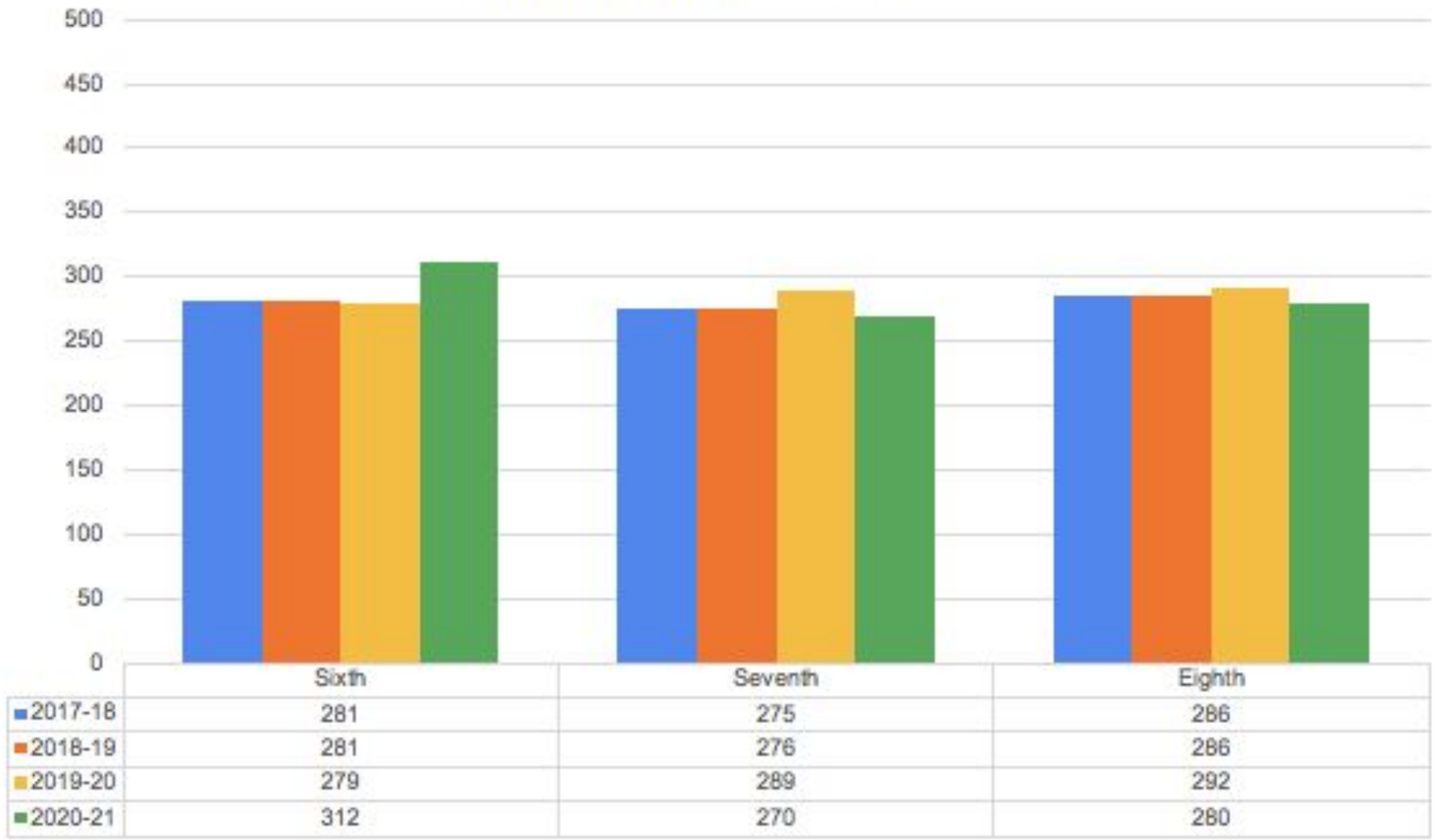
## Crittenden Enrollment by Grade



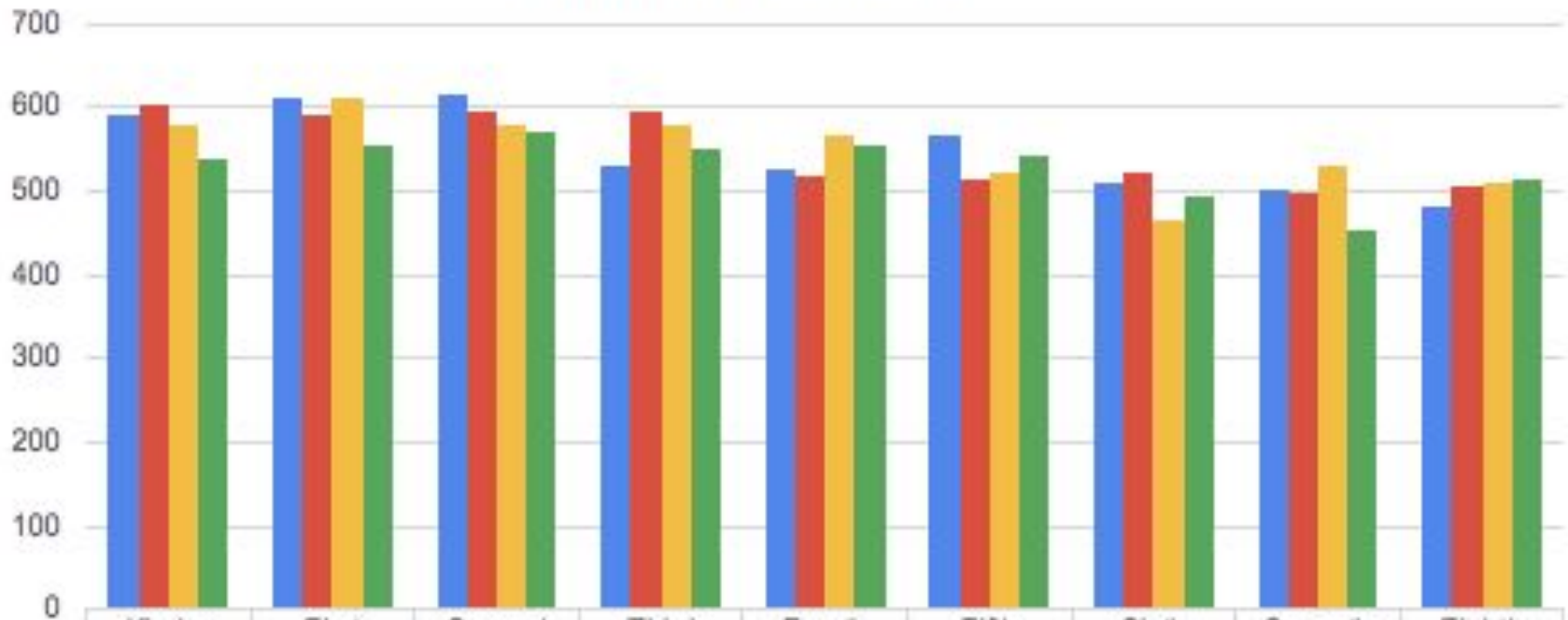
	Sixth	Seventh	Eighth
■ 2017-18	228	226	198
■ 2018-19	241	224	220
■ 2019-20	187	240	219
■ 2020-21	184	185	235



## Graham Enrollment by Grade

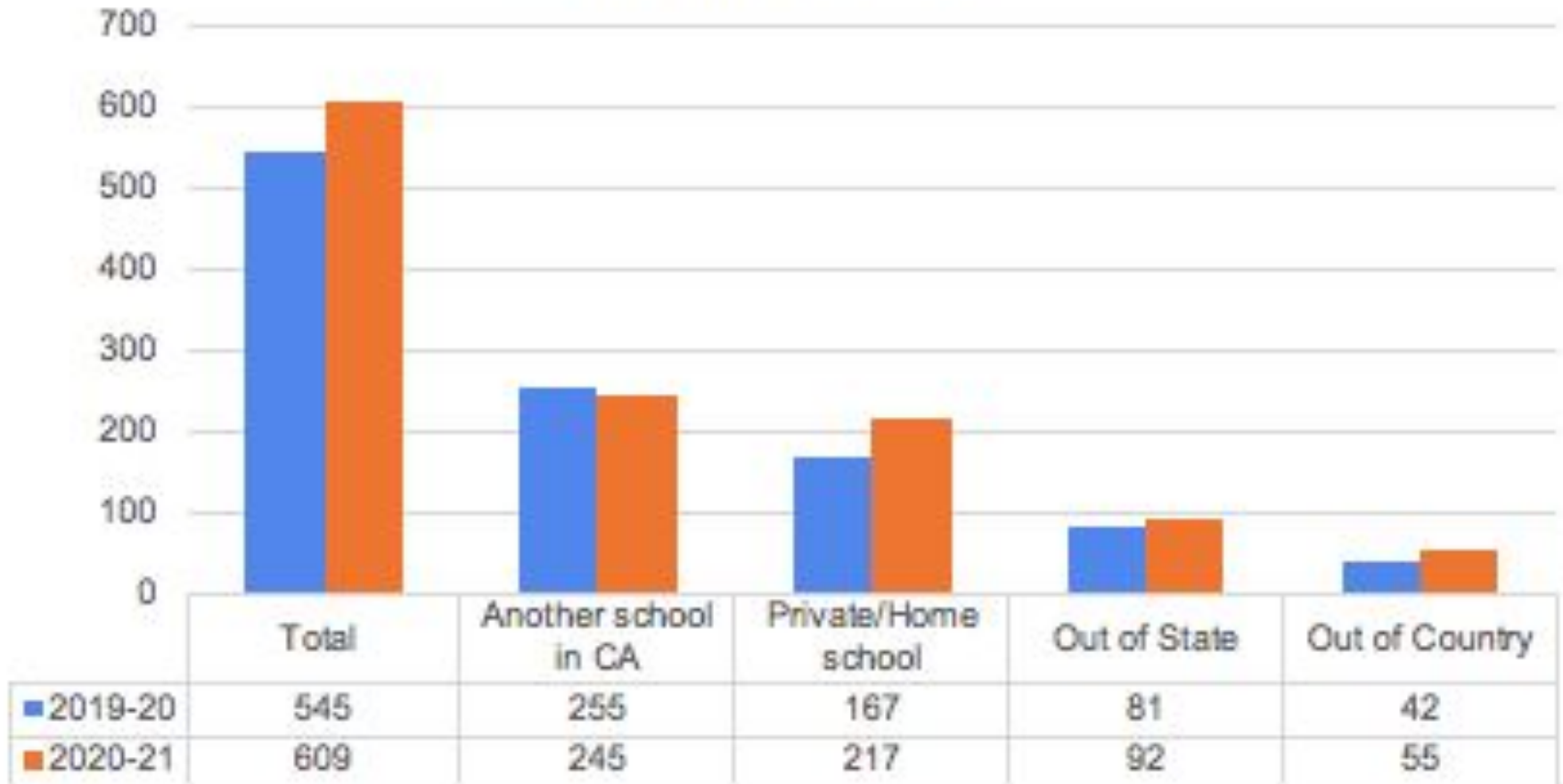


## Enrollment by Grade



	Kinder	First	Second	Third	Fourth	Fifth	Sixth	Seventh	Eighth
■ 2017-18	591	612	614	532	527	569	509	501	484
■ 2018-19	605	593	597	597	520	513	522	500	506
■ 2019-20	578	611	579	578	567	523	466	529	511
■ 2020-21	537	555	572	550	555	543	496	455	515

## Withdrawal Reasons





Mountain View  
Whisman  
School District

# Additional Data

## Free and Reduced Lunch Counts by School Site (Free/Reduced)

	2016-17	2017-18	2018-19	2019-20
<b>Bubb</b>	17.2% / 1.9%	17.2% / 1.4%	16.0% / 1.7%	17.4% / 2.1%
<b>Castro</b>	71.50% / 11.7%	79.1% / 9.0%	74.6% / 10.8%	71.9% / 12.8%
<b>Huff</b>	4.9% / 2.1%	7.4% / 1.2%	8.0% / 1.8%	5.5% / 0.9%
<b>Landels</b>	21.5% / 6.5%	19.7% / 4.0%	15.3% / 4.0%	19.2% / 4.5%
<b>Mistral</b>	34.5% / 6.1%	38.8% / 2.6%	39.4% / 5.4%	37.6% / 4.5%
<b>Monta Loma</b>	33.5% / 9.7%	32.4% / 8.4%	29.4% / 9.2%	27.5% / 10.2%
<b>Stevenson</b>	5.3% / 1.6%	6.6% / 0.6%	5.2% / 0.7%	4.4% / 1.4%
<b>Theuerkauf</b>	55.4% / 11.4%	57.0% / 8.7%	46.3% / 10.4%	30.5% / 11.4%
<b>Vargas</b>				19.8% / 4.0%
<b>Crittenden</b>	38.5% / 11.7%	39.2% / 9.9%	32.1% / 7.9%	32.1% / 9.3%
<b>Graham</b>	26.6% / 4.9%	29.9% / 4.0%	28.1% / 4.2%	26.9% / 4.8%

# Free and Reduced Lunch Counts

- It is early in the year and we don't have complete counts to share for 2020-21
- The Summer Feeding program has been extended
  - The number of students who have begun picking up lunches since the extension was announced has increased
  - Not at the level of summer, but increased from the beginning of the new school year
- The ability for anyone to receive a lunch, regardless of FRL status, has reduced the urgency for many families to apply
- Free and Reduced Lunch status is one of the categories that contributes to unduplicated pupil counts.
- It also contributes to eligibility for Title I funding
- FRL numbers are expected to decline for the 2020-21 year

# McKinney Vento Counts

Year	Aug. 2017	Aug. 2018	Aug. 2019	Aug. 2020
School				
BB	3	3	6	3
CA	19	26	51	61
CR	10	14	18	21
GR	9	13	21	32
HF	1	0	1	3
LN	7	8	4	11
MI	5	5	8	8
ML	9	10	6	8
ST	0	0	0	0
TH	12	13	6	9
VA	-	-	1	12
others (PKL, PKG, NPS, PSS)		1	6	3
Totals por year	75	93	128	171



Mountain View  
Whisman  
School District

# Immunizations



# Immunizations

- California law requires children to be immunized.
  - Children are exempt from immunization requirements only if a parent or guardian submits a written statement from a licensed physician (M.D. or D.O.)
- Immunization requirements for admission to school in California for the 2020-2021 school year remain in place
- Some families have postponed immunizations due to concerns about visiting the doctor's office during the pandemic
- Some students have been conditionally admitted while we are in distance learning
- Immunizations must be complete before students are able to attend class in person

# Immunization Update

	# of missing immunizations as of 8/21	# of missing immunizations as of 9/7
Bubb	8	5
Castro	38	11
Huff	8	7
Landels	17	15
Mistral	8	6
Monta Loma	15	10
Stevenson	6	2
Theuerkauf	12	8
Vargas	14	9
Crittenden	40	29
Graham	67	52
Total	233	157



Mountain View  
Whisman  
School District

# Summary and Next Steps

# Summary

- Enrollment has declined since 2019-20 by 244 students
- The most significant decline can be seen in grades K/1
- Withdrawal reasons are fairly consistent with years past with an increase in private/home school status
- Fewer families have submitted immunization records
- Fewer families have applied for free/reduced lunch, though we know that the needs exist in the community particularly given the increase in McKinney Vento families

# Next Steps

- Staffing has been maintained in order to effectively shift to stage 3
- When staff and students shift to stage 3, we will be able to staff all connected classes, blended classes, and staff the elementary virtual team
- District nurses will continue to collect immunization records from families
  - Students without complete immunization records when moving to stage 3 will be required to remain in Distance Learning
- SCEFs will continue to reach out to families to complete lunch applications