

## **Staff Report on Perimeter Controls and Feedback from Sites**

On Friday March 13, MVWSD announced that students would not be returning to campus on March 18th due to COVID-19. Since that time, MVWSD has been working to update its procedures and protocols to serve families and keep students and staff safe. In May, June, July, and August MVWSD provided multiple opportunities for parents and staff to give input and feedback on reopening plans including health and safety.

Fencing was discussed during reopening planning at the below meetings:

- Focus Groups were held on May 26, 27, and June 2 for a total of eight hours to gather as much feedback as possible from staff and parents to inform our reopening planning. For those that were not able to participate in the focus groups, a Thoughtexchange was held between May 20-28th. Perimeter controls and the need for screening was mentioned in sessions and in the Throughexchange.
- The Reopening Task Force met on June 5 and July 24 and consisted of teachers, administrators and classified staff. During the Task Force meetings screening and controls were discussed.
- During public meetings on May 7, June 4, July 2, July 23, and August 6 perimeter controls were listed as part of the reopening process.

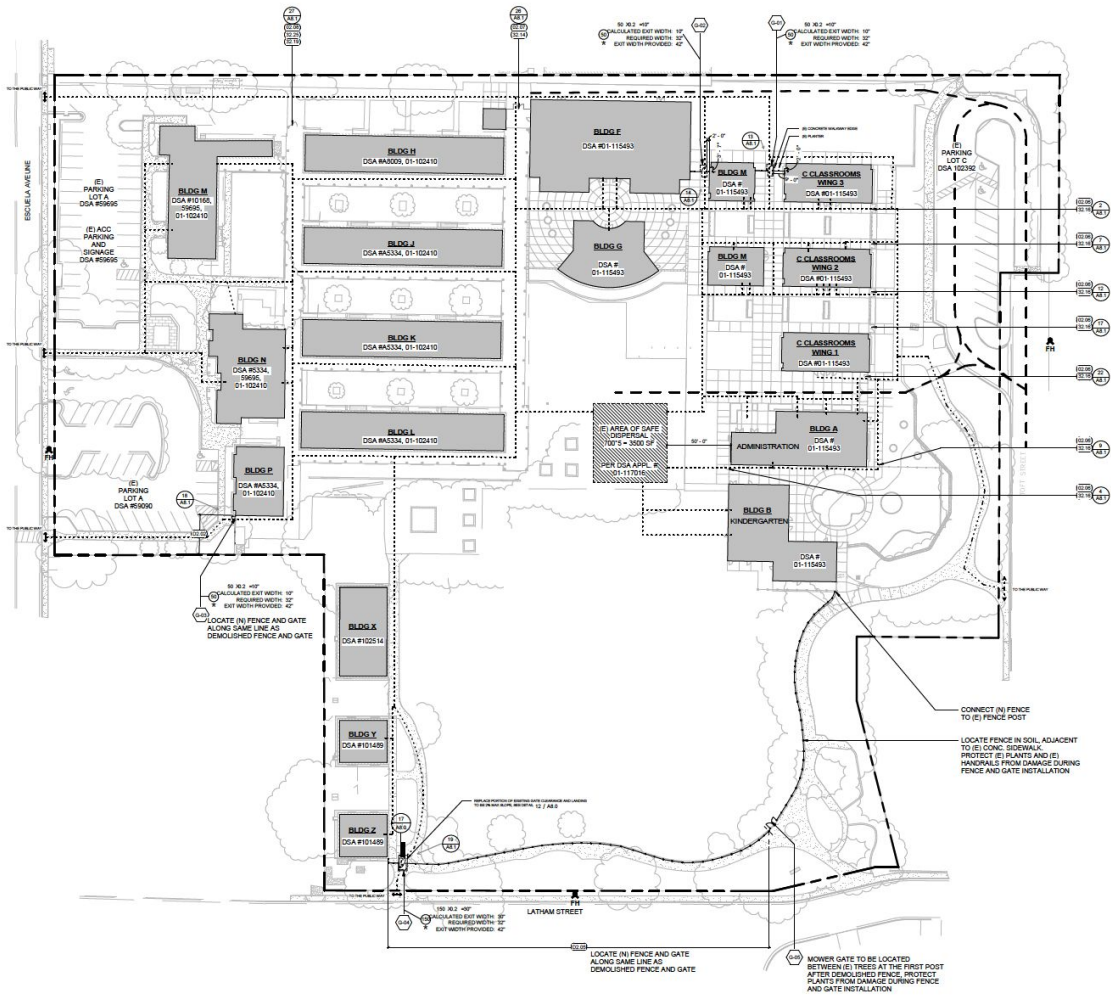
With unknown conditions to start the year, the need to have perimeter controls ready to stop non-screened students and adults from entering campus and to ensure that masks are worn on campus. CSEA and MVEA were clear during negotiations that screening every person on campus was needed for them to feel safe to return to campus with students. Additionally, the perimeter controls would add additional security and violence prevention.

The need for perimeter controls is different from the fence that was installed in front of the preschool earlier this year. The perimeter controls are intended to increase the height of some fences, add gates to access points to campus and close gaps in current fences. The preschool fence project (unknown timeline) is intended to designate the dedicated outdoor playspace for preschool.

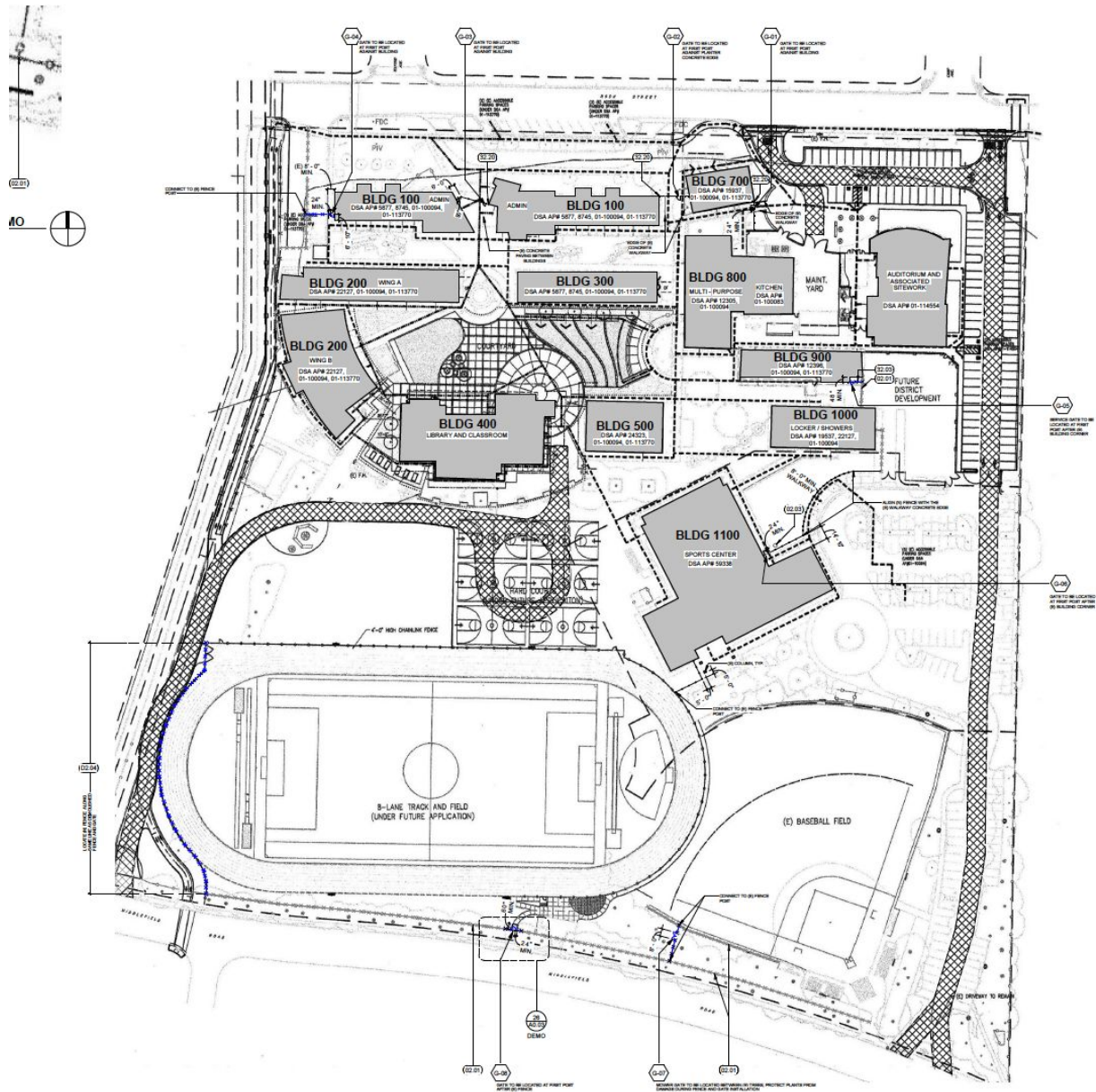
Highlights for each site (*shared with principals as talking points*).

[Bubb](#). New 6 foot metal ornamental fencing around the library building, new gate at the office entrance, and 6 foot metal fencing at the end of classroom wings near the parking lot and down the side of the school to Barbara Avenue.

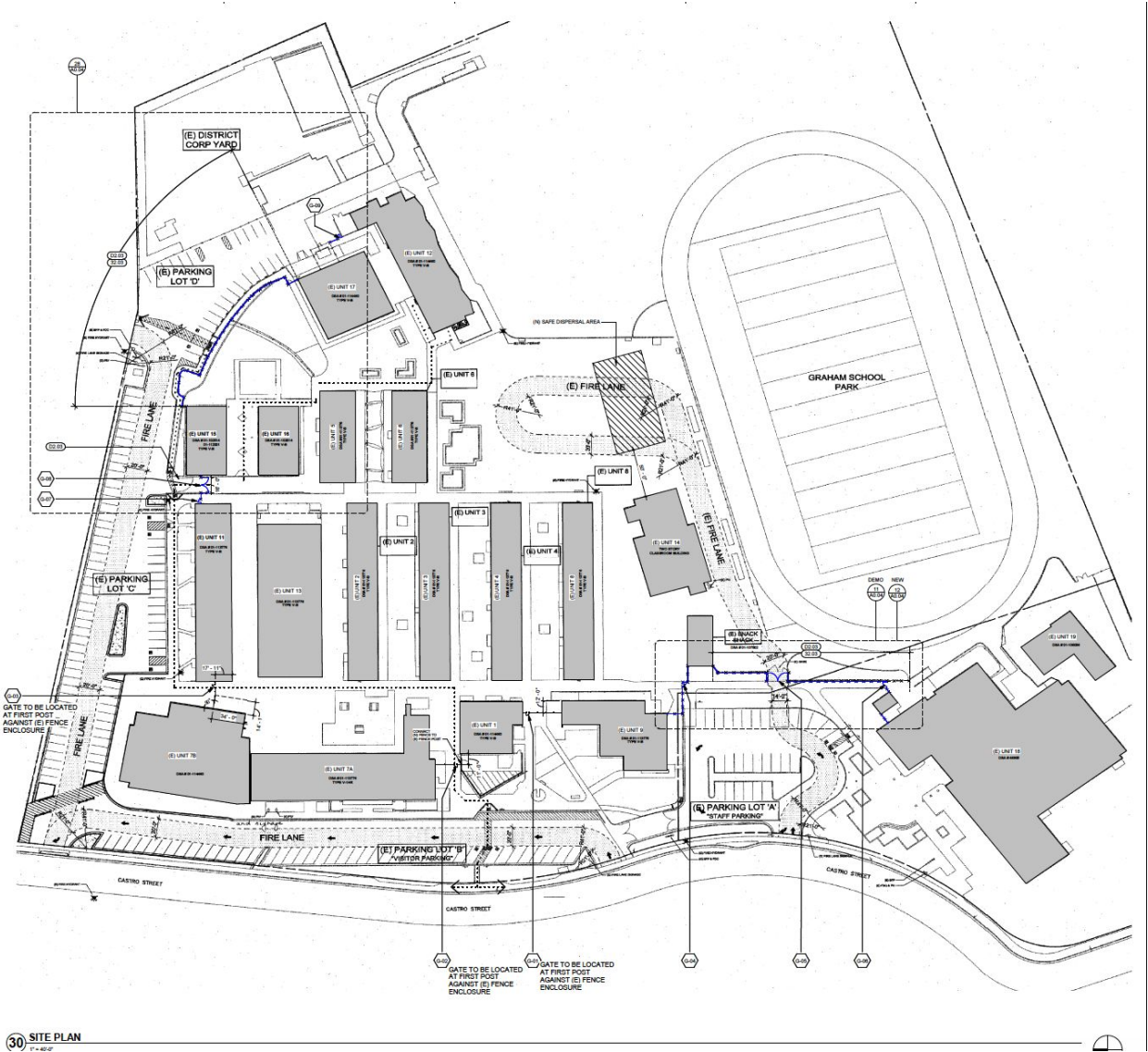




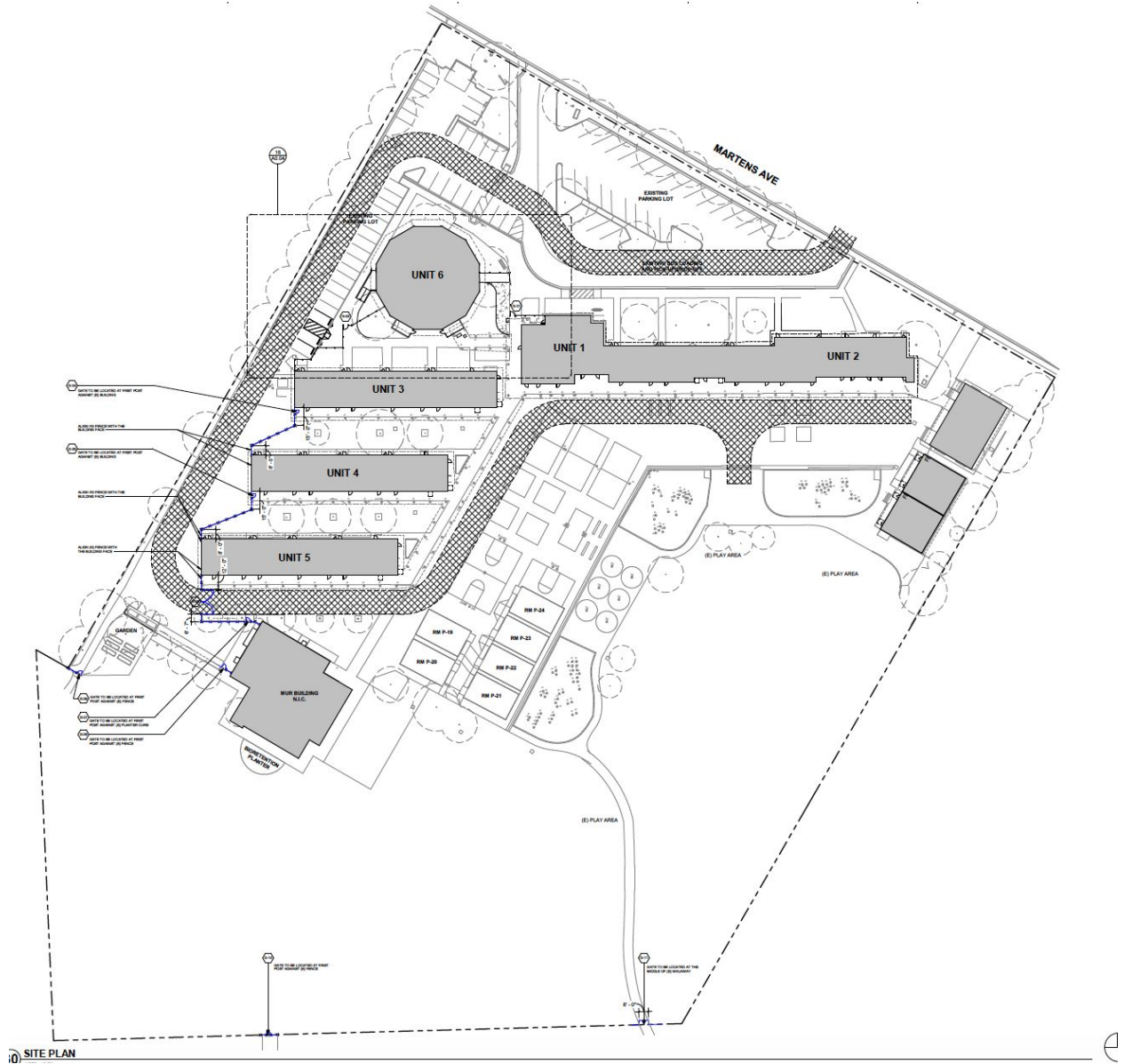
[Crittenden](#). New six- foot ornamental metal gates on either side of the building 700 campus entrances, at the office building and at the Middlefield entrance to campus near the sports center. New chain link fencing at the Permanente Creek Trail side campus entrance.



[Graham](#). New ornamental gates at the Castro entrances to campus on either side of the library, as well as gates at the auditorium entrance and from the side parking lot near building 11. New six-foot chain-link fence between the sports pavilion parking lot, track and school.



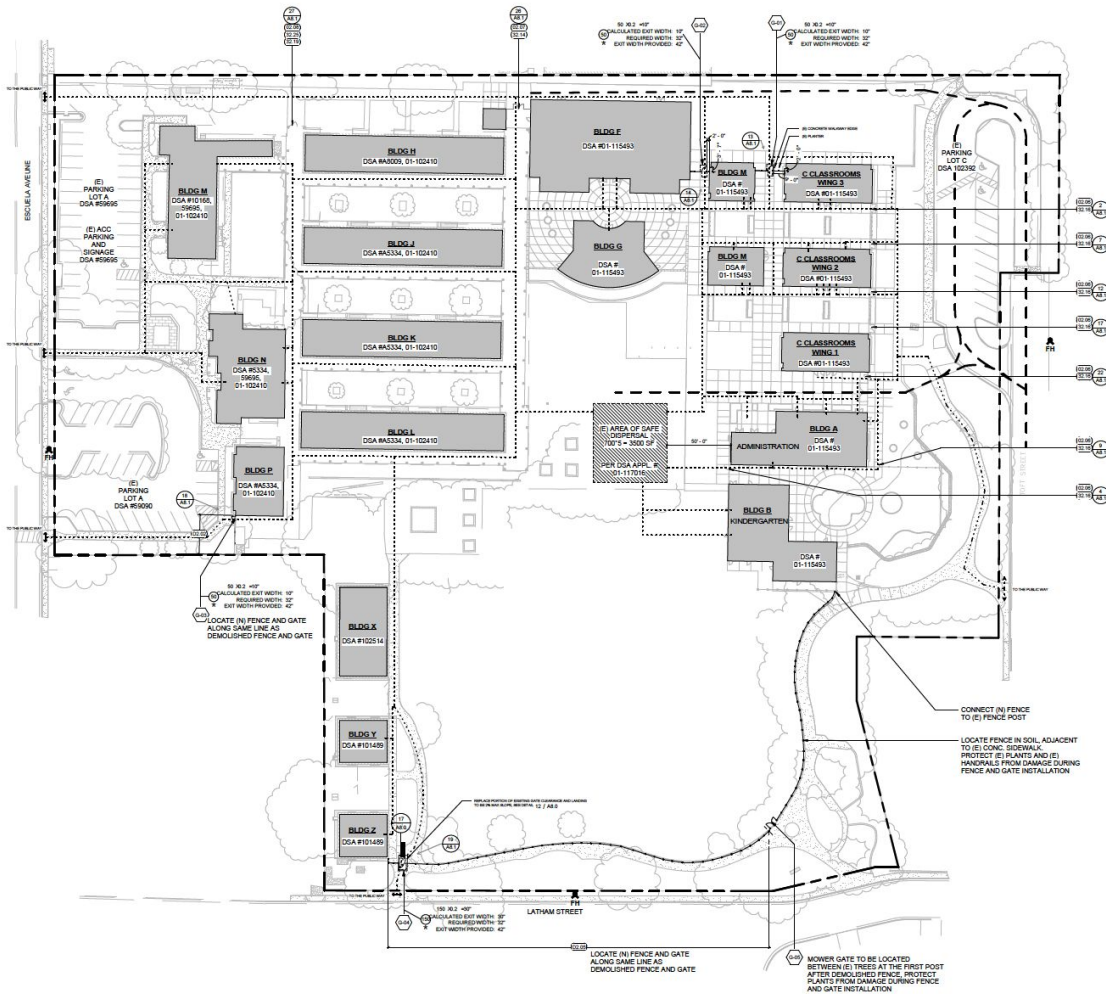
[Huff](#). New six-foot metal ornamental fencing around the library building, new gate at the office entrance, and six-foot ornamental metal fencing at the end of Classroom wings near the staff parking.



**Landels.** New six-foot metal ornamental fencing around the library building, new gate at the office entrance, and six-foot metal fencing at the end of the classroom wings near the parking lot toward the MUR. A new gate will be added in the back at the entrance of Mercy Avenue, and a six-foot fence around the outside edges of the field and along the Stevens Creek Trail side of campus, securing the entire field.

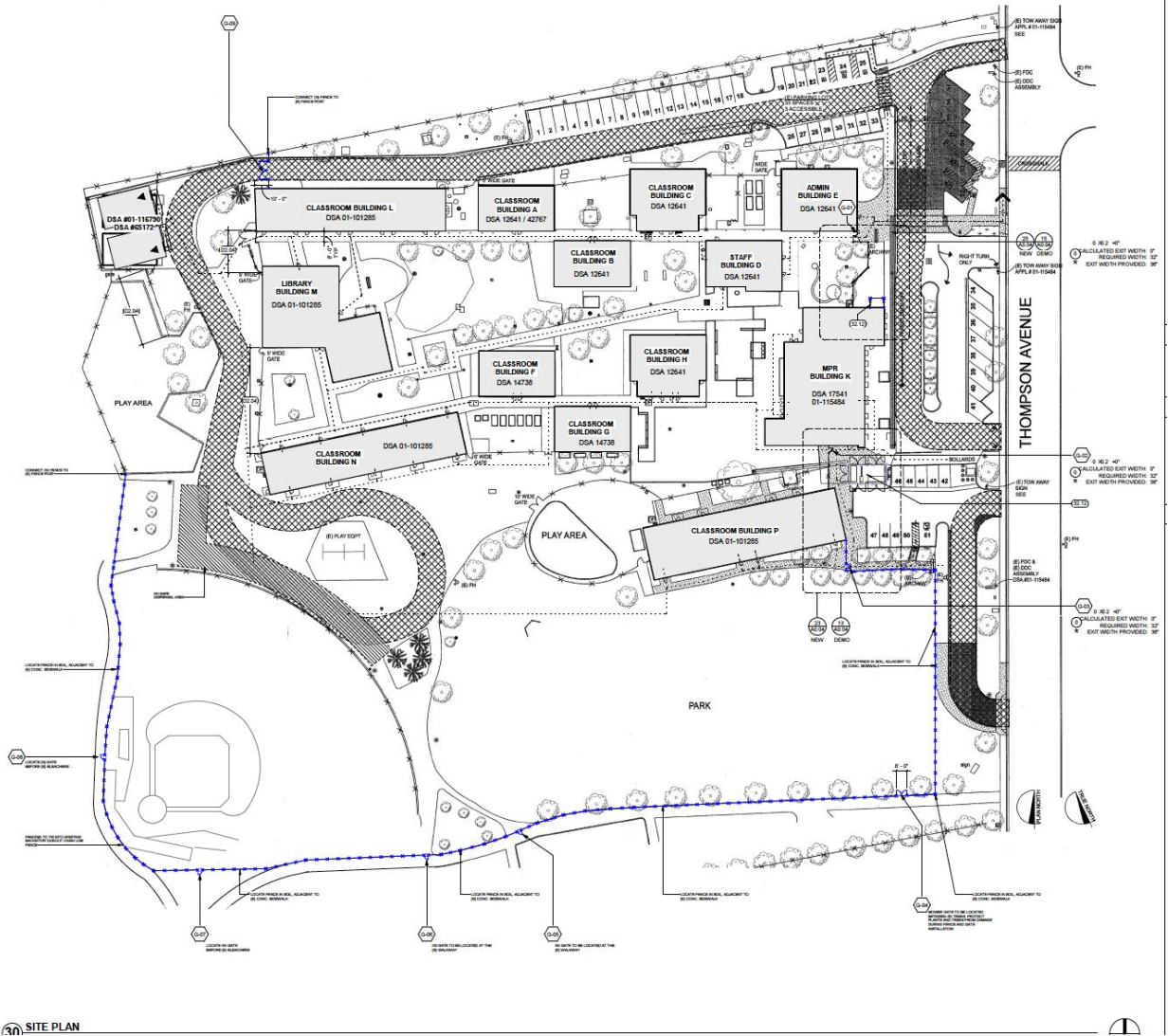


school) from 4 feet to 6 feet. This improvement to the existing fence is for the purpose of securing the Castro/ Mistral campus. It is separate from any future fence project that dedicates play area to the preschool.

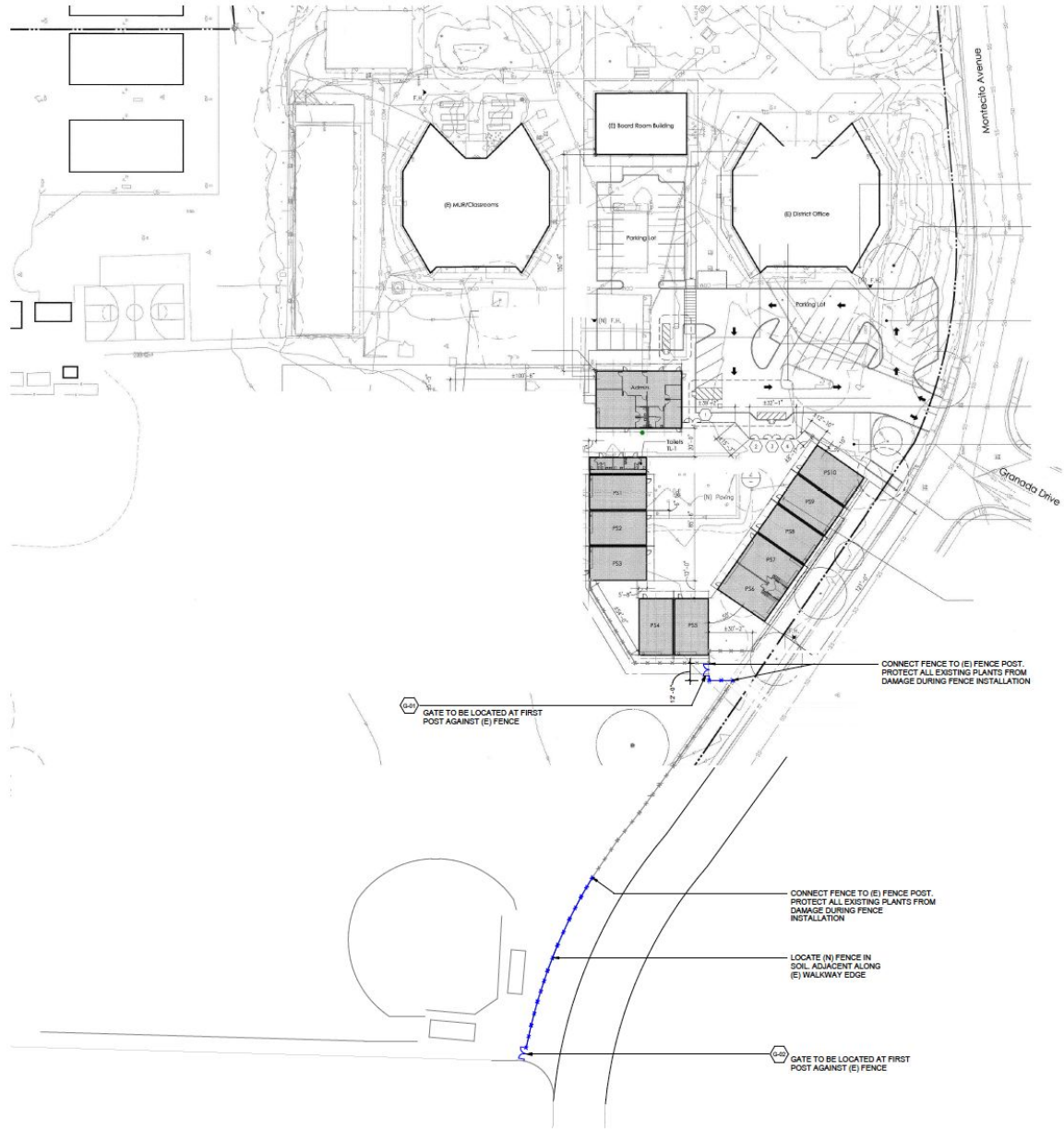


[Monta Loma](#). New six-foot metal ornamental metal fence and gates between the office building and the MUR, between the MUR and kinder classroom wing, and on the back side of the school near staff parking. The addition of fencing and gates running from the play area in the back of the school around the perimeter of the field and connected to the kinder wing.





**SITE PLAN**  
 Stevenson. New gates for existing fence line at the field on Montecito.



[Theuerkauf](#). New gates near the preschool and near the tennis courts



Vargas. No new fencing needed.

With laws regarding public works and approval needed from the Division of State Architect the initial [proposed timeline](#) was very tight. The district sought to get feedback from principals and staff.

#### Project Communications Timeline

May 11 Walked every site to observe current controls and areas of need with Greystone West, CBO, and Ron Wheelahan.

May 12 [Communication](#) to the City about the potential need to secure the fields and school sites

May 27 two to three conceptual designs of fences shared with principals and feedback was requested. Principals provided feedback on what would work best for their school and students and what areas to avoid. Special attention was given to field access after hours.

May 31 Shared conceptual design of perimeter controls with the City

June 1 Received feedback from the City and incorporated into conceptual design

June 15 Revised plans (based on site feedback, feedback from Dr Rudolph, and City) and shared with principals

June 18 [Talking points](#) sent out to principals on HVAC and perimeter controls

June 18 Amendment #5 to Greystone's contract for perimeter controls to board for approval

June 18 HY architect contract to Board for approval

July 24 sent an invitation to all principals for a final review and Q and A session and an offer to walk site.

July 28 Every principal received a preliminary set of markups for review

July 30 Google Meet meeting held with all principals (principals had the choice to attend)