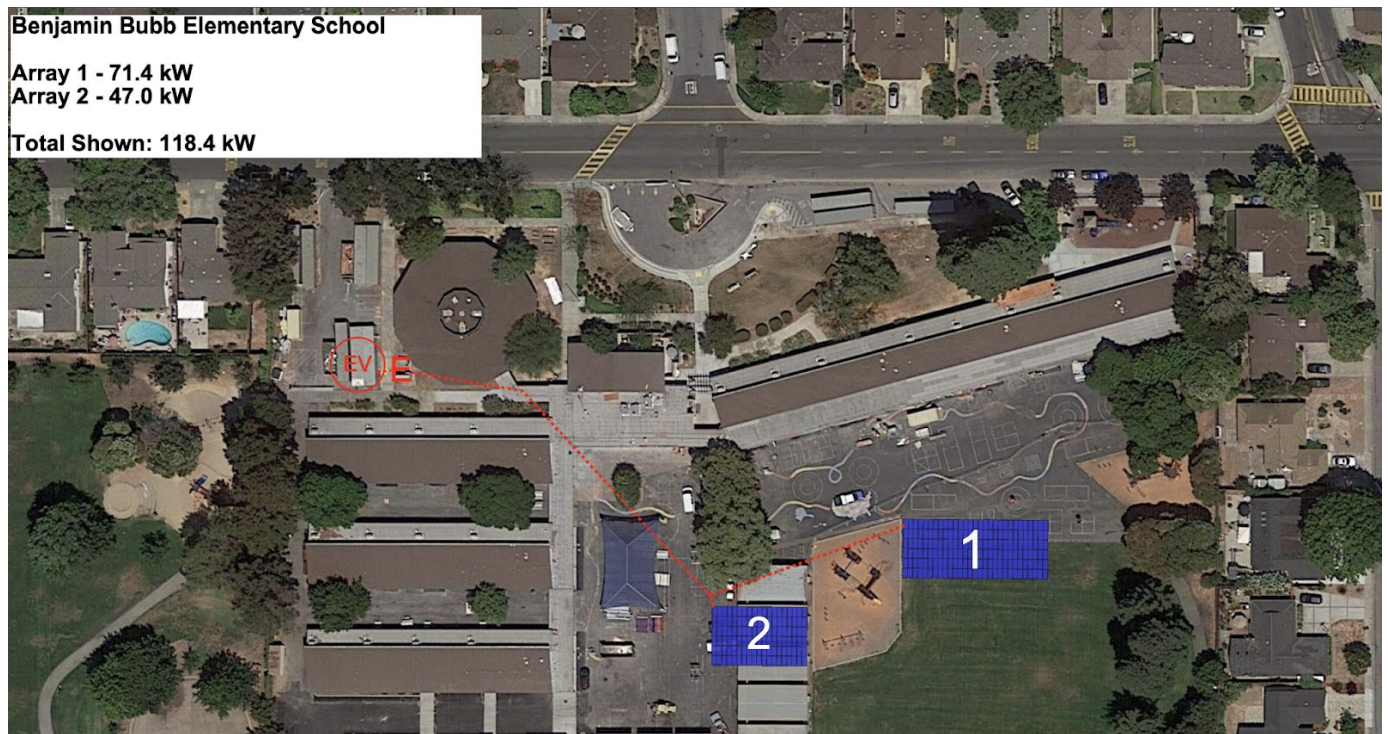


Staff Report Solar

In the spring of 2018 Sage Renewables conducted a feasibility study and presented to the Board. At the June 14, 2018 meeting the Board gave direction to continue with the concept of solar panels in MVWSD. In May 2020 the district and Engie met with all school sites to get feedback on the design and placement of the solar arrays. The meetings with school sites took place during School Site Council Meetings.

The District is currently working with Engie and Sage on contract revisions and hopes to bring a contract to the board in October.

Below are the tentative placements based on providing shade for students, efficiency, and feedback from sites.



Crittenden Middle School

Secondary Service (E2)

Roof 4 - 29.4 kW

Roof 7 - 57.1 kW

Canopy 2- 87.4 kW

Total Shown: 173.9 kW



**Edith Landels Elementary
School**

Array 1 - 64.3 kW
Array 2 - 57.1 kW
Total Shown: 121.4 kW



Frank Huff Elementary School
Array 1 - 45.4 kW
Array 2 - 64.3 kW
Total Shown: 109.6 kW

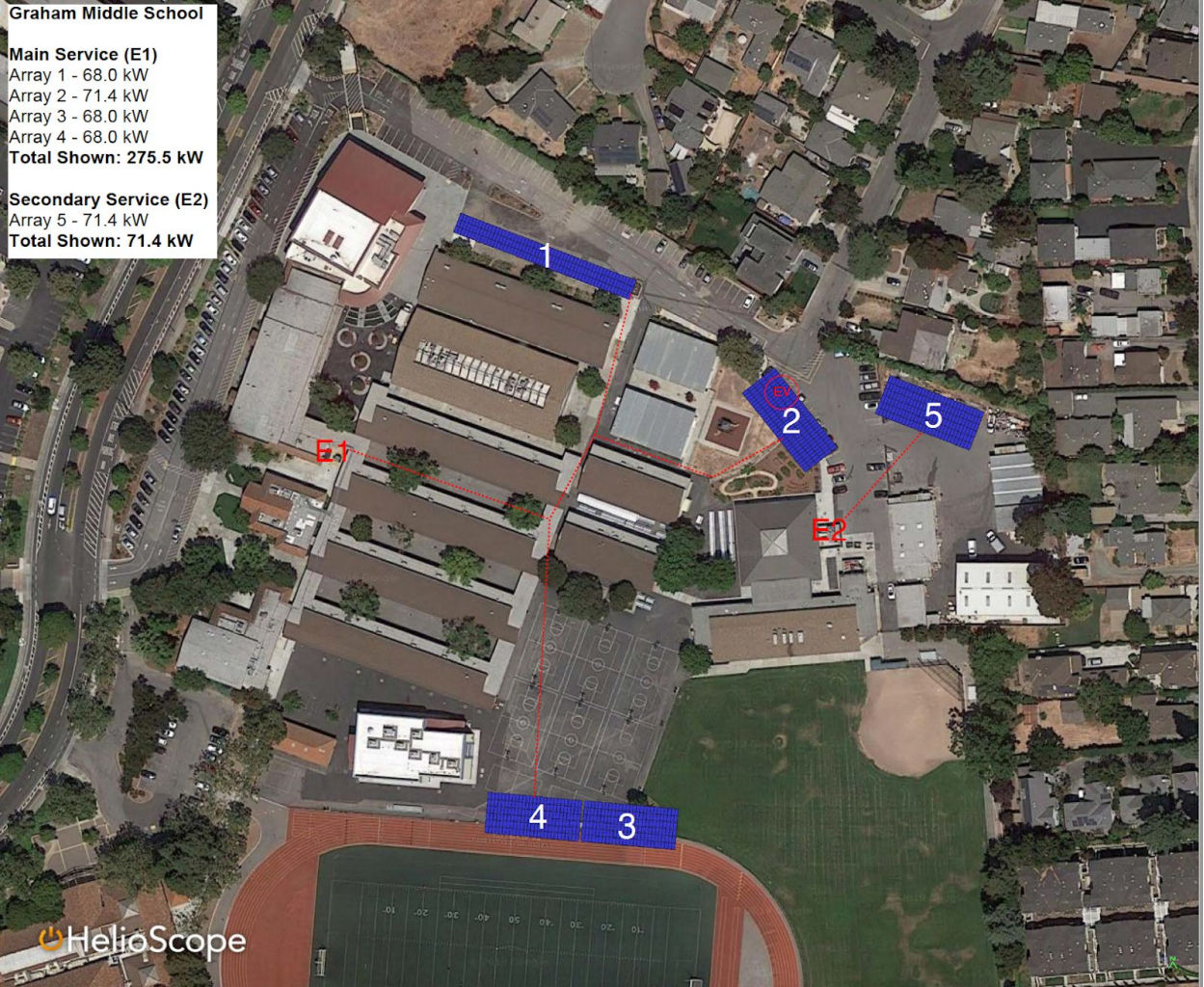


HelioScope

Graham Middle School

Main Service (E1)
Array 1 - 68.0 kW
Array 2 - 71.4 kW
Array 3 - 68.0 kW
Array 4 - 68.0 kW
Total Shown: 275.5 kW

Secondary Service (E2)
Array 5 - 71.4 kW
Total Shown: 71.4 kW



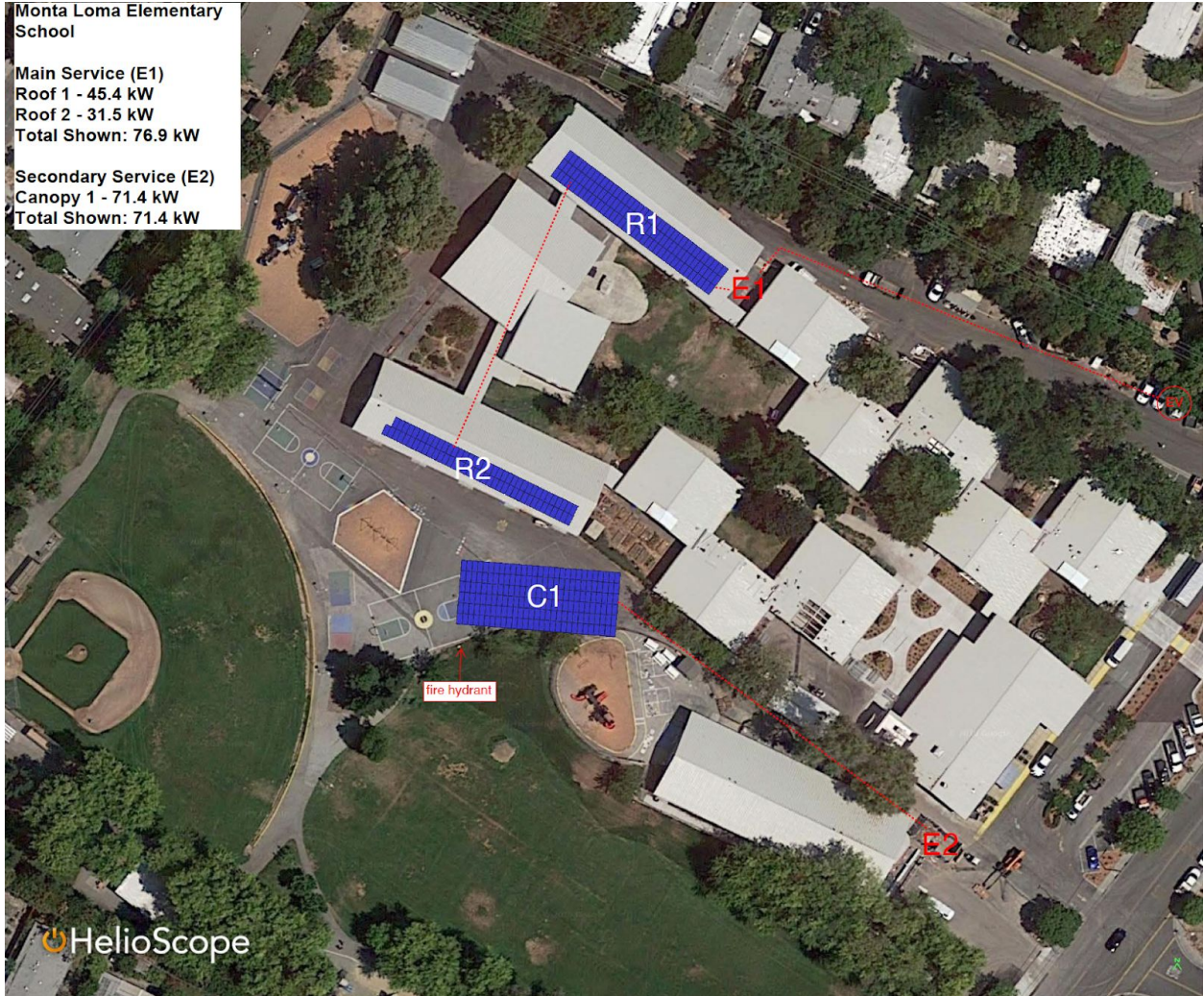
Mistral / Castro
Elementary School
Array 1 - 45.4 kW
Array 2 - 52.9 kW
Total Shown: 98.3 kW



Monta Loma Elementary School

Main Service (E1)
Roof 1 - 45.4 kW
Roof 2 - 31.5 kW
Total Shown: 76.9 kW

Secondary Service (E2)
Canopy 1 - 71.4 kW
Total Shown: 71.4 kW



Stevenson Elementary & District Office
Canopy 1 - 83.2 kW
Canopy 2 - 45.4 kW
Canopy 3 - 30.2 kW
Total Shown: 158.8 kW

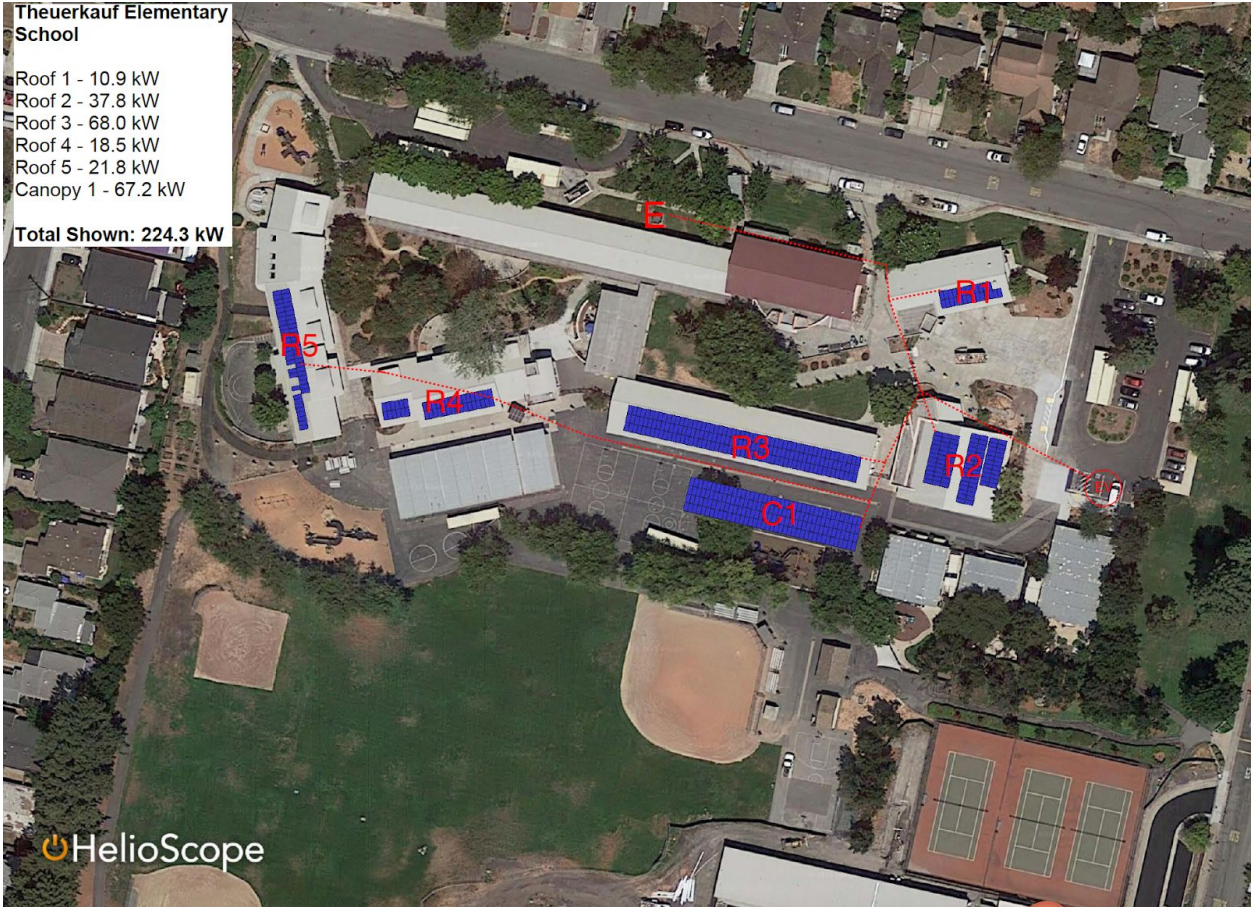


*EV charging station added to Stevenson's parking lot

Theuerkauf Elementary School

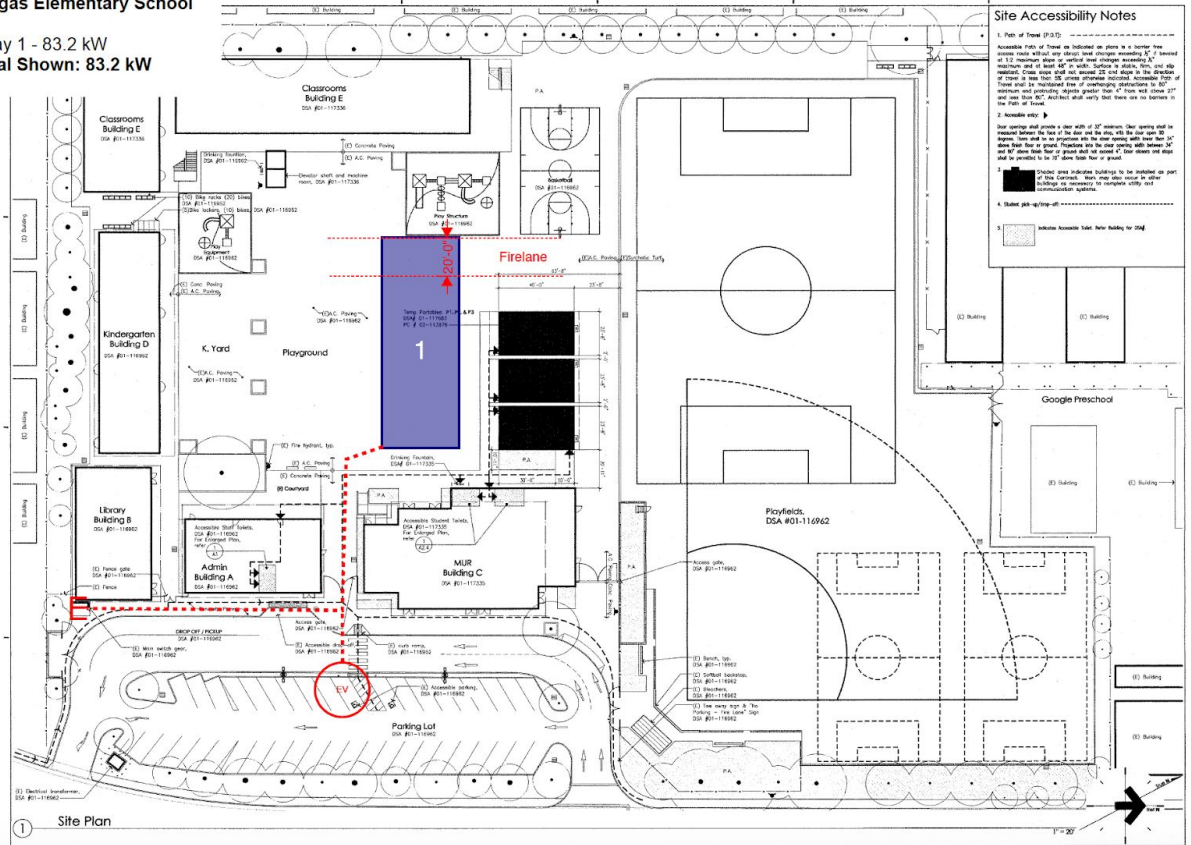
- Roof 1 - 10.9 kW
- Roof 2 - 37.8 kW
- Roof 3 - 68.0 kW
- Roof 4 - 18.5 kW
- Roof 5 - 21.8 kW
- Canopy 1 - 67.2 kW

Total Shown: 224.3 kW



Vargas Elementary School

Array 1 - 83.2 kW
 Total Shown: 83.2 kW



Site Accessibility Notes

1. Path of Travel (P.O.T.)
 Accessible route of travel as indicated on plans is a barrier free route. Accessible route shall not include any steps or ramps with a slope of 1:12. Maximum rise of any ramp shall not exceed 1/4" in 12" horizontal distance. Maximum run of any ramp shall not exceed 30' without a landing. Clear width shall not be less than 36" along the direction of travel. In all cases, the clear opening shall be at least 32" clear of the walls. These shall be maintained from any protruding obstructions to 80" maximum and protruding objects greater than 1/4" from wall space or over 1/4" from 80" Architect shall verify that there are no barriers in the field of travel.
2. Accessible entry
 Clear opening and provide a clear width of 32" minimum. Clear opening shall be provided between the face of the door and the stop, with the door open 90 degrees. There shall be no protrusions into the clear opening with the door closed from the interior. Protrusions into the clear opening shall be between 48" and 60" above the floor or ground and not exceed 1/4" clear and shall not be protruding to 12" above the floor.
3. Accessible route
 Protruding objects protruding buildings to be installed as part of this Contract. When such objects occur in other buildings, it is the responsibility of the contractor to coordinate with the building owner.
4. Shaded path - lighting-off

DTA
 Possible Classroom Relocation

1 Site Plan