



Mountain View  
Whisman  
School District

# Planning for Future Growth

October 10, 2019



# Shaping the future

- Our community is growing
- Develop a 10-year master facilities plan
- Board Goal 5: Resource Stewardship
  - Students, staff and community members will have access to various resources, such as technology, facilities, furniture, equipment, etc., in a fiscally responsible manner, to fulfill the mission of MVWSD
    - Outcome: The District will maintain facilities in good repair
    - Action: Create Facilities Needs/Master Plan for long-term goals



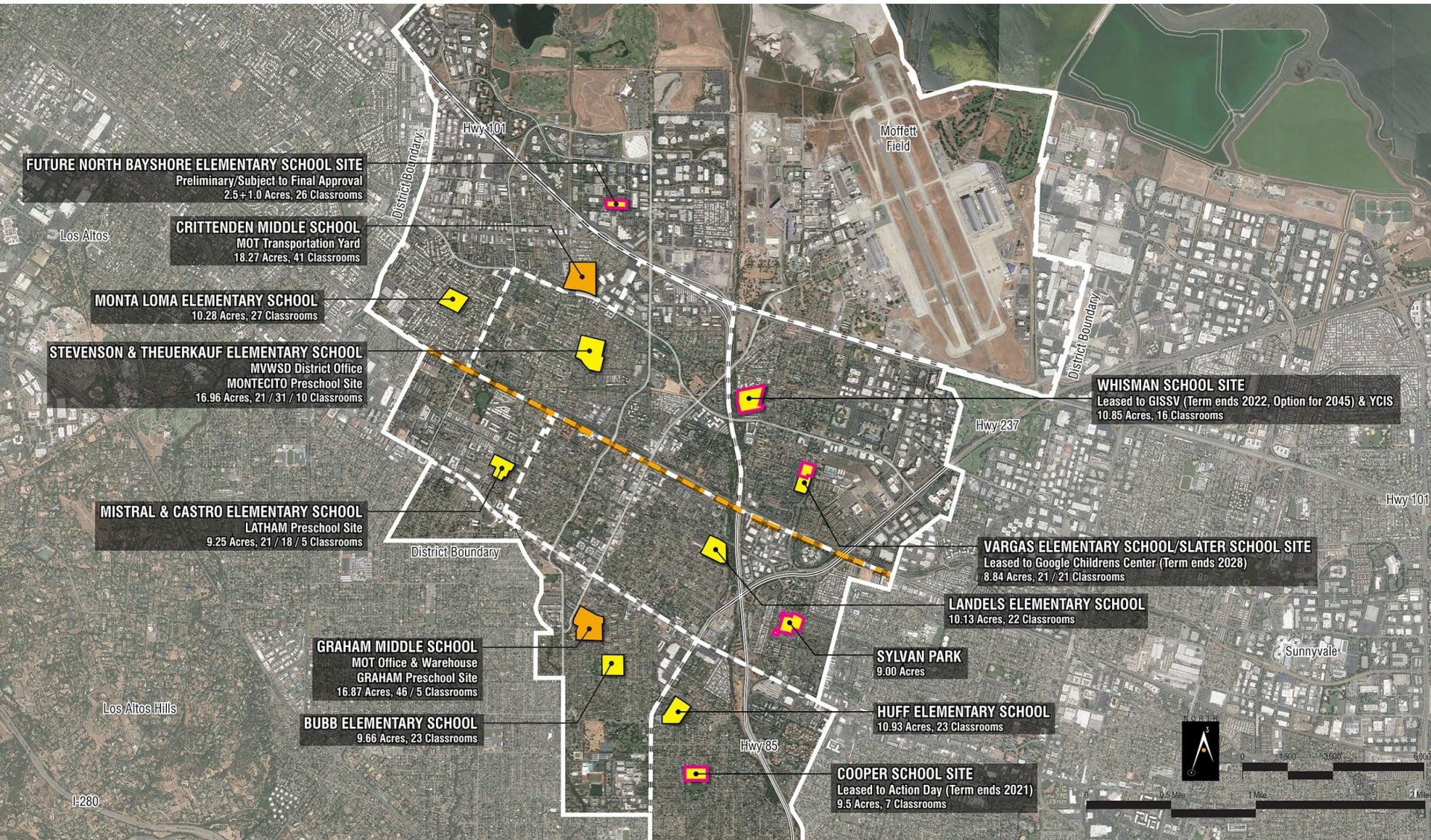
Mountain View  
Whisman  
School District

# Demographics and Planning

# Planning

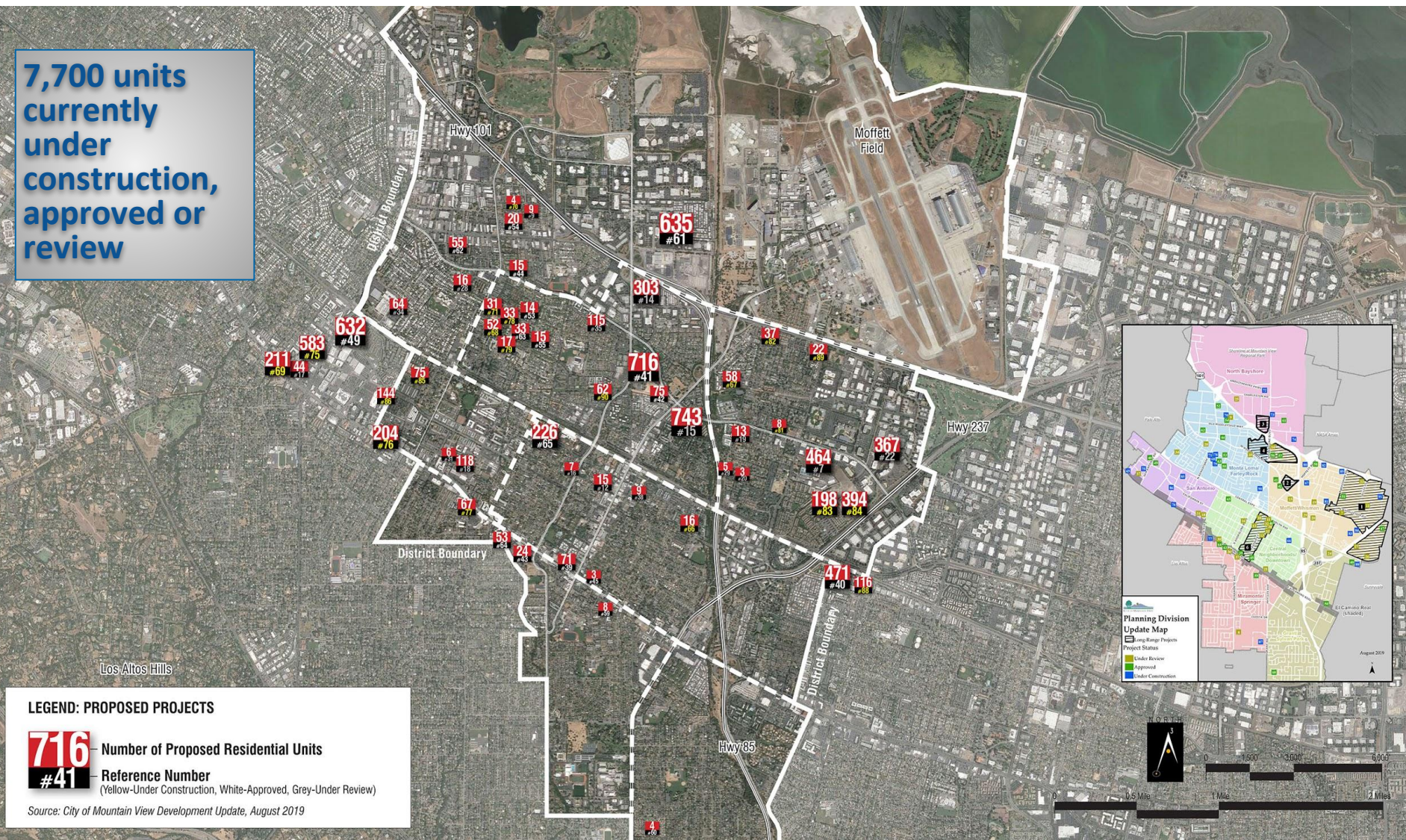
- In 2008, MVWSD approved development of SFIP (Student Facilities Improvement Plan)
  - Demographic study
  - Conditions and needs analysis
  - 17 guiding principles
  - Program standards
- SFIP adopted May 6, 2010

# School sites

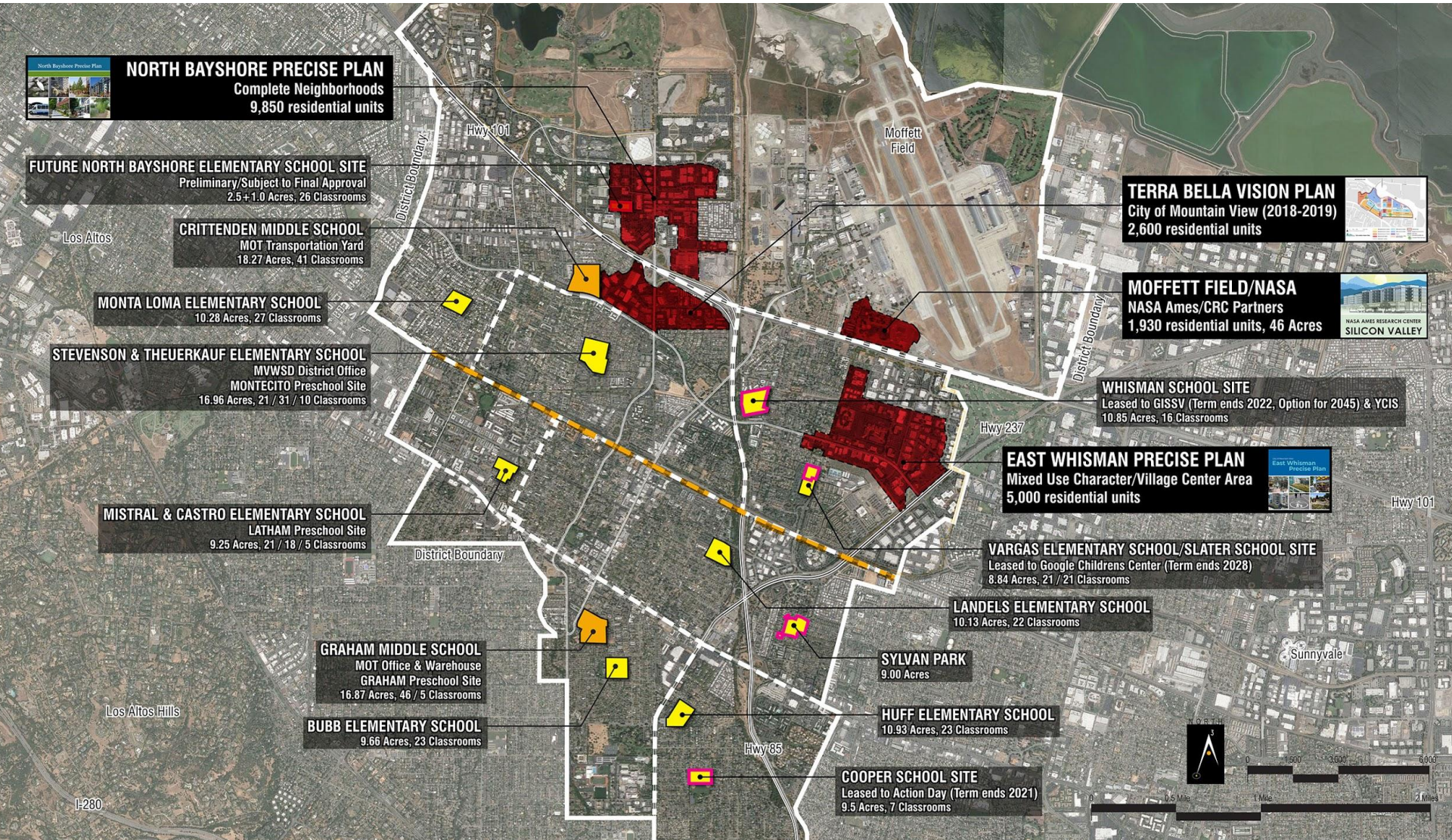


# Future residential growth - all active locations

7,700 units currently under construction, approved or review



# Future higher density residential growth areas



# The reality is more residential growth

- Up to 20,000 total additional residential units
- Incremental build out over 10-15 years
- Concentrated in North/Northeast
  - North Bayshore, East Whisman, Moffett Field, Terra Bella, others
- Additional 2,448 K-8 students
  - 1,512 Elementary, 936 Middle school



# Residential growth, con't ...

## New units =

|                 |       |
|-----------------|-------|
| Studio          | 4,955 |
| Rental 1-3 BR   | 4,745 |
| Owner 1-3 BR    | 7,288 |
| BMR 1-3 BR      | 2,563 |
| Senior/Disabled | 450   |

**Total =  
20,001  
Units**

## New students

|            |         |
|------------|---------|
| Elementary | + 1,512 |
| Middle     | + 936   |
| High       | + 1,152 |

**Total K-8  
students = 2,448**

# Currently Projected

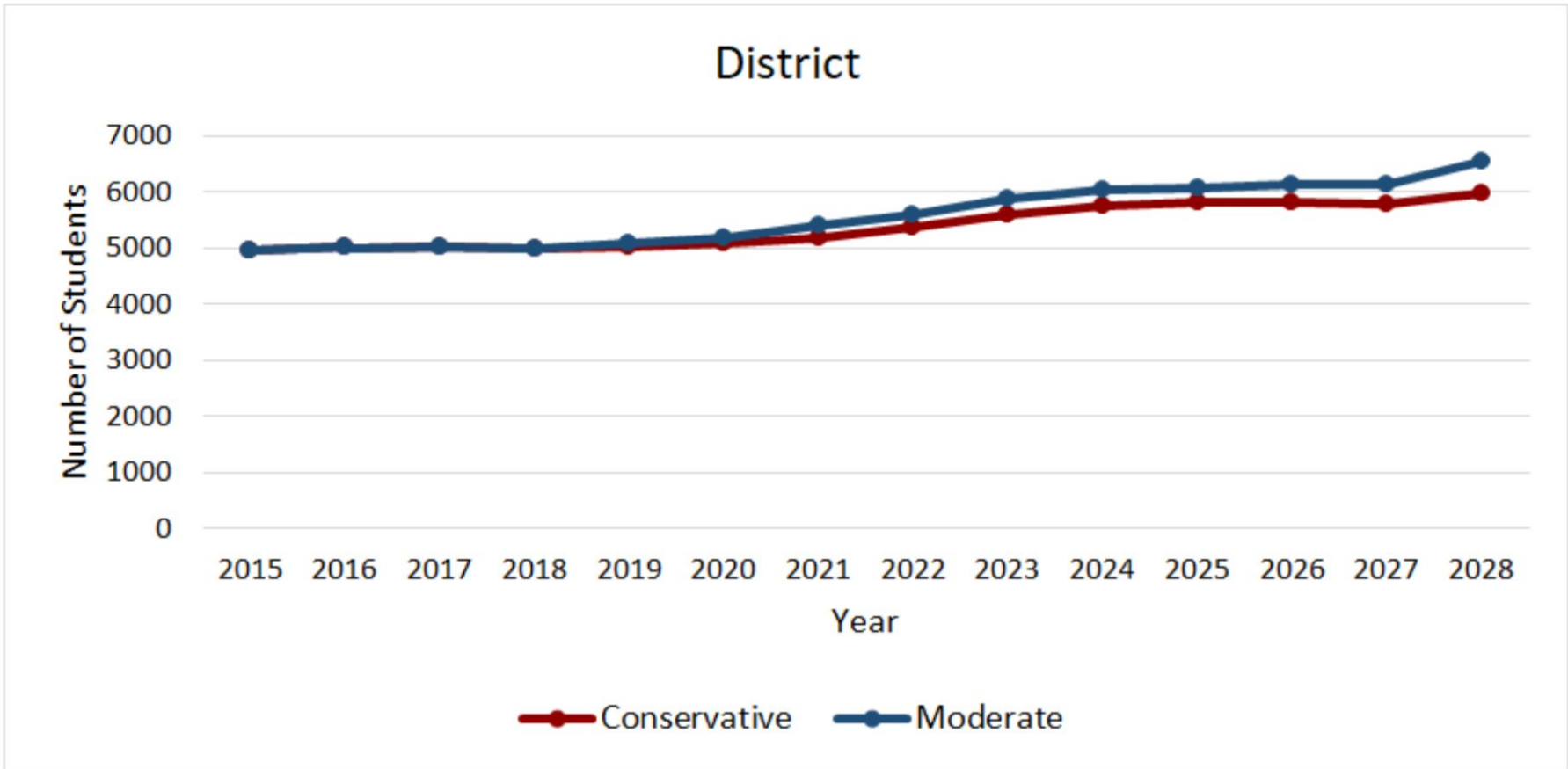
## Projected Enrollment (2018-2023)\*

CONSERVATIVE 5 YEAR DISTRICT-WIDE PROJECTION BY GRADE LEVEL

| Grade      | 2018  | 2019 | 2020 | 2021 | 2022 | 2023 |
|------------|-------|------|------|------|------|------|
| TK         | 53    | 53   | 53   | 55   | 57   | 58   |
| K          | 606   | 601  | 610  | 629  | 650  | 660  |
| 1          | 590   | 609  | 608  | 626  | 644  | 666  |
| 2          | 594   | 583  | 604  | 612  | 629  | 658  |
| 3          | 594   | 585  | 578  | 608  | 615  | 642  |
| 4          | 520   | 577  | 572  | 575  | 604  | 624  |
| 5          | 515   | 512  | 571  | 572  | 577  | 613  |
| 6          | 519   | 478  | 483  | 539  | 545  | 552  |
| 7          | 498   | 512  | 475  | 487  | 541  | 556  |
| 8          | 506   | 498  | 515  | 483  | 495  | 551  |
| Subtotals: | 4995  | 5008 | 5069 | 5186 | 5357 | 5580 |
| Pct Chg:   | -0.3% | 0.3% | 1.2% | 2.3% | 3.3% | 4.2% |

\* Based on residential projects approved or under construction”

# If growth stops today = 1,000 students





Mountain View  
Whisman  
School District

# School Capacity

# Determining maximum school capacity

Number of existing classrooms (Excludes leased modular classrooms and SPED classrooms) x 28 students = Maximum Capacity

Maximum Capacity does not account for other programmatic uses of existing classrooms (e.g., SPED, afterschool, counseling, services, preschools, etc.)

# Maximum school capacity by the numbers

| School Sites  | Site Area<br><i>Acres</i> | Classrooms<br><i>No.</i> | Density<br><i>Classroom/<br/>acre</i> | Enrollment<br><i>Capacity*</i> | Enrollment<br><i>Existing**</i> | Capacity<br><i>Surplus/<br/>Deficit</i> |
|---|---------------------------|--------------------------|---------------------------------------|--------------------------------|---------------------------------|---|
| <i>ELEMENTARY SCHOOL SITES</i>                      |                           |                          |                                       |                                |                                 |   |
| Huff ES   | 10.93                     | 23                       | 2.10                                  | 572                            | 546                             | 26                                      |
| Landels ES  | 10.16                     | 20                       | 1.97                                  | 616                            | 446                             | 170                                     |
| Bubb ES   | 9.66                      | 23                       | 2.38                                  | 564                            | 475                             | 89                                      |
| Stevenson ES <small>(includes DO portables)</small> | 16.96                     | 31                       | 3.30                                  | 516                            | 430                             | 86                                      |
| Theuerkauf ES                                       | 16.96                     | 25                       | 3.30                                  | 744                            | 332                             | 412                                     |
| Monta Loma ES                                       | 10.28                     | 27                       | 2.63                                  | 656                            | 342                             | 314                                     |
| Vargas ES   | 8.84                      | 21                       | 4.75                                  | 516                            | 293                             | 223                                     |
| Mistral ES  | 9.25                      | 21                       | 4.22                                  | 512                            | 379                             | 133                                     |
| Castro ES   | 9.25                      | 18                       | 4.22                                  | 432                            | 327                             | 105                                     |
|   |                           | <b>209</b>               |                                       | <b>5,128</b>                   | <b>3,570</b>                    | <b>1,558</b>                            |
| <i>MIDDLE SCHOOL SITES</i>                          |                           |                          |                                       |                                |                                 |   |
| Crittenden MS                                       | 18.27                     | 41                       | 2.24                                  | 1,148                          | 647                             | 501                                     |
| Graham MS***  | 16.87                     | 46                       | 2.73                                  | 1,288                          | 861                             | 427                                     |
|   |                           | <b>87</b>                |                                       | <b>2,436</b>                   | <b>1,508</b>                    | <b>928</b>                              |
| <b>Capacity Surplus/Deficit</b>                     |                           |                          |                                       |                                |                                 | <b>2,486</b>                            |

# Maximum school capacity by the numbers

| School Sites                                       | Site Area    | Classrooms | Density                    | Enrollment       | Enrollment        | Capacity                    |
|--|--------------|------------|----------------------------|------------------|-------------------|-----------------------------|
|  | <i>Acres</i> | <i>No.</i> | <i>Classroom/<br/>acre</i> | <i>Capacity*</i> | <i>Existing**</i> | <i>Surplus/<br/>Deficit</i> |
| <i>OTHER MVWSD SITES - Not currently available</i> |              |            |                            |                  |                   |                             |
| PreK - Google at TH                                |              | 5          |                            | 140              |                   | 140                         |
| Cooper   | 9.5          | -          | -                          | -                | -                 | -                           |
| Whisman  | 10.85        | 39         | 3.59                       | 1,092            | -                 | 1,092                       |
| Slater   | 9.25         | 21         | 4.22                       | 588              | -                 | 588                         |
|  |              | <b>86</b>  |                            | <b>2,408</b>     | -                 | <b>1,680</b>                |

# Maximum capacity vs. realistic capacity

Issues with using maximum capacity

Doesn't take into account:

- Most of the growth will be in northern schools; not distributed equally
- Northern schools are already the most dense (classrooms per acre)
- Desire to have neighborhood schools



## Maximum capacity vs. realistic capacity, con't ...

While we have maximum capacity of 2,500 students, this assumes:

- There are no dedicated spaces for specific educational programs, like:
  - Special Education
  - Response to Instruction
- All ancillary programs are removed from schools, like:
  - Beyond the Bell, YMCA, Right at School, The Beat

# Realistic capacity example

Monta Loma:

27 total classrooms

- 3 Beyond the Bell
- 1 RSP
- 1 YMCA
- 1 STEAM/RTI
- 1 Computer lab
- 1 Art

= 19 Rooms

656 capacity reduced to 460

# Realistic capacity

| School Sites  | Site Area<br><i>Acres</i> | Classrooms<br><i>No.</i> | Density<br><i>Classroom/<br/>acre</i> | Enrollment<br><i>Capacity*</i> | Enrollment<br><i>Existing**</i> | Capacity<br><i>Surplus/<br/>Deficit</i> |
|---|---------------------------|--------------------------|---------------------------------------|--------------------------------|---------------------------------|---|
| <i>ELEMENTARY SCHOOL SITES</i>                      |                           |                          |                                       |                                |                                 |   |
| Huff ES   | 10.93                     | 20                       | 1.83                                  | 488                            | 546                             | (58)                                    |
| Landels ES  | 10.16                     | 18                       | 1.77                                  | 504                            | 446                             | 58                                      |
| Bubb ES   | 9.66                      | 21                       | 2.17                                  | 432                            | 475                             | (43)                                    |
| Stevenson ES <small>(includes DO portables)</small> | 16.96                     | 29                       | 3.01                                  | 460                            | 430                             | 30                                      |
| Theuerkauf ES                                       | 16.96                     | 22                       | 3.01                                  | 672                            | 332                             | 340                                     |
| Monta Loma ES                                       | 10.28                     | 19                       | 1.85                                  | 460                            | 342                             | 118                                     |
| Vargas ES   | 8.84                      | 20                       | 4.52                                  | 492                            | 293                             | 199                                     |
| Mistral ES  | 9.25                      | 16                       | 3.14                                  | 392                            | 379                             | 13                                      |
| Castro ES   | 9.25                      | 13                       | 3.14                                  | 312                            | 327                             | (15)                                    |
|   |                           | <b>178</b>               |                                       | <b>4,212</b>                   | <b>3,570</b>                    | <b>642</b>                              |

## *MIDDLE SCHOOL SITES*

|                                 |       |           |      |              |              |              |
|---------------------------------|-------|-----------|------|--------------|--------------|--------------|
| Crittenden MS                   | 18.27 | 36        | 1.97 | 1,008        | 647          | 361          |
| Graham MS***                    | 16.87 | 42        | 2.49 | 1,176        | 861          | 315          |
|                                 |       | <b>78</b> |      | <b>2,184</b> | <b>1,508</b> | <b>676</b>   |
| <b>Capacity Surplus/Deficit</b> |       |           |      |              |              | <b>1,318</b> |

# The need

Short-term: existing capacity can absorb near-term growth (3-5 years)

Long-term - 10-15 years (3-5 year lead time)

**Elementary:** Need capacity equal to two additional schools

**Middle:** Need 1,000 more seats (500 at each site)



Mountain View  
Whisman  
School District

# Realities and Limitations

# Considerations

- Approval process at City level does not take into account student generation in totality
- Community expects and needs space dedicated to specific student programs
- Smaller schools and boundaries
  - Focus point of the neighborhood
  - Come at a higher operational cost
  - Many districts do not undergo a three-year boundaries adjustment process. They move boundary lines as a response to growth
    - Boundary realignment may be required



Mountain View  
Whisman  
School District

# Questions for Board

# Questions

- What priorities should exist?
  - Energy efficiency? Uncompleted items from last Bond?
- Should accomodation of future growth be added?
- Are we comfortable with a North Bayshore elementary site of 2-3 acres (6-7 is typical minimum)
- How large can schools get?
- Should we redistribute among current sites only, or include leased sites?





Mountain View  
Whisman  
School District

# Next steps

# Next steps

- Research options for growth (Oct- Nov)
- Outreach to community (Oct-Nov)
- Develop draft SFIP (Oct)
- Present at City Council (Oct 15)
- Present SFIP (Nov 7)
- Adopt SFIP (Nov 21)