

Yew Chung International School

Proposal to revise classroom and playground at
Whisman campus



Mission statement: To raise globally competent and compassionate leaders with a servant's heart, who aspire to, and act for a better world.

Project: Convert a classroom to a preschool suitable classroom (phase 1) and revise the adjacent playground (phase 2) at Whisman campus.

Architects: Artik Art and Architecture

Cost: Approximately \$300K. YCIS will be bearing the complete cost of the changes.

Phase 1 – Restroom Addition & Fence/Gates

We will be adding a single occupancy restroom and removing a demising wall in existing portable R; add fencing and gates to enclose the existing YCIS play yard west of portable R.

DSA Submittal: 4/25/19 (full submittal and review)

DSA Approval: Hoping for end of June

Occupancy: By 8/9/19 (~4 weeks for construction)

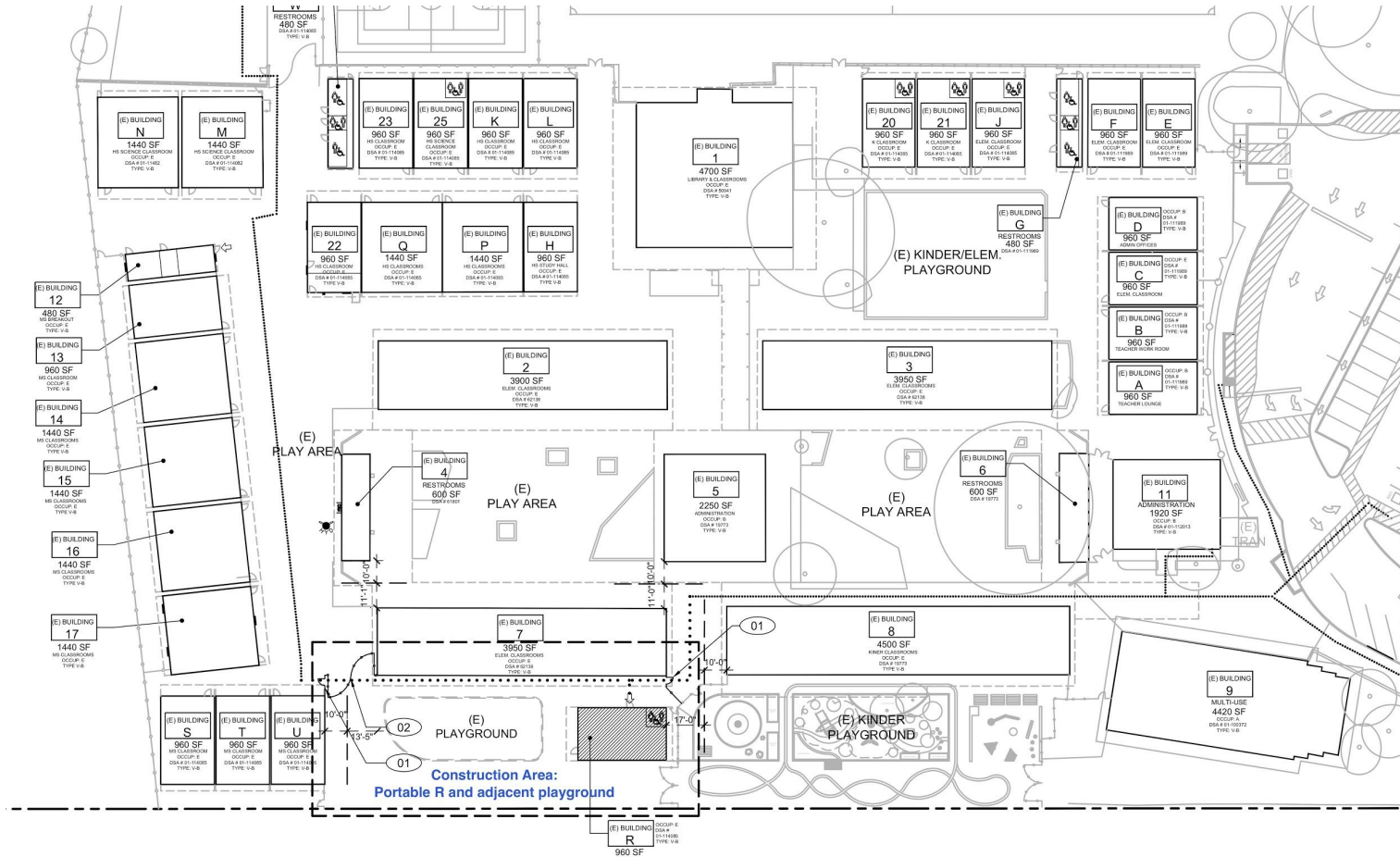
Phase 2 – Play yard

We will be removing the existing play structure and redoing the play yard with varying surfaces and play opportunities suitable for age four to lower elementary grades.

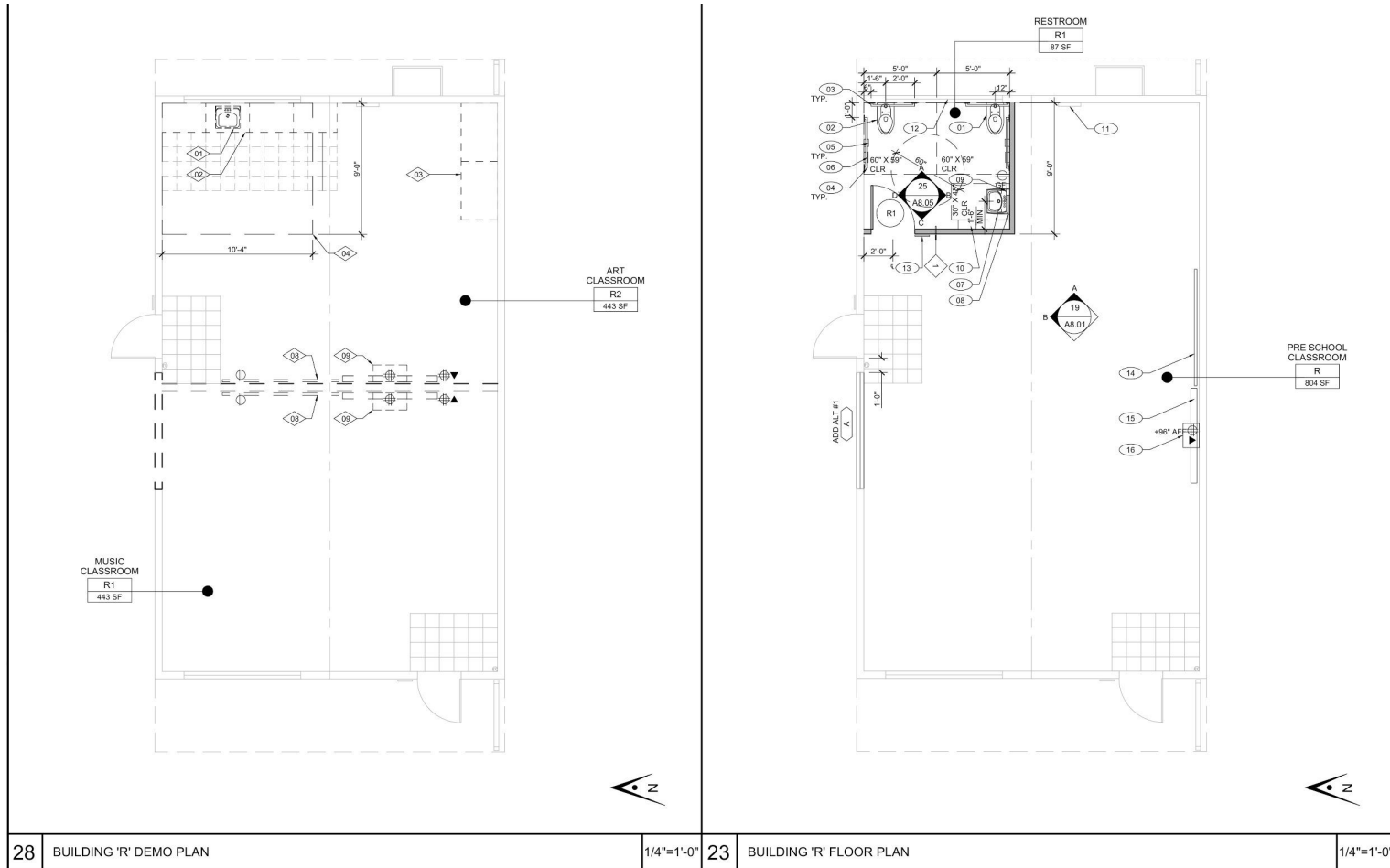
DSA Over the Counter Access Only: Mid June

Occupancy: 9/3/19 (~8 weeks for construction)

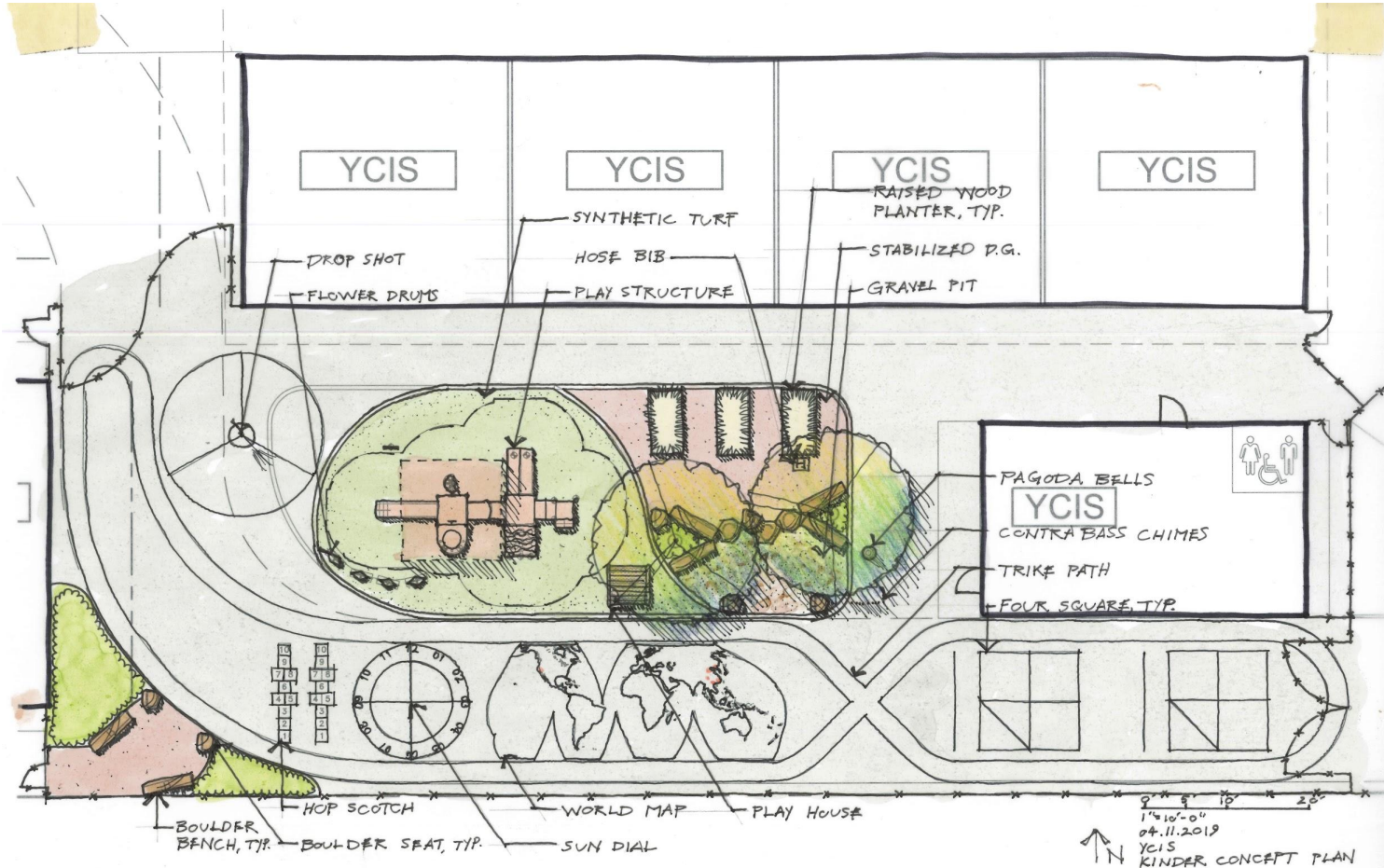
Construction Area



Classroom Demo and new Floor Plan



Playground conceptual drawing (not final design)



Thank you!

Any questions please contact George Tsatsos,
School Business Manager of YCIS at
georget@sv.ycef.com