



October 8, 2018

Attn: Juan Sagarra

Greystone West Company

Crittenden Portable Demo and Flatwork Proposal

Inclusions: (Area identified in included Site Plan)

- Demo and removal complete, two (2) 24x40 portable classroom buildings along with metal ramps
- Demo and removal of any abandoned and unused utility boxes within the area of work
- Demo and removal of approximately 2500SF of asphalt down to base rock section and replace with new asphalt paving section to conform to existing grades and reveal of 6" curb.
- Demo and removal of approximately 6LF of concrete curb and replace with new to accommodate proper drainage
- All necessary temporary fence and traffic control

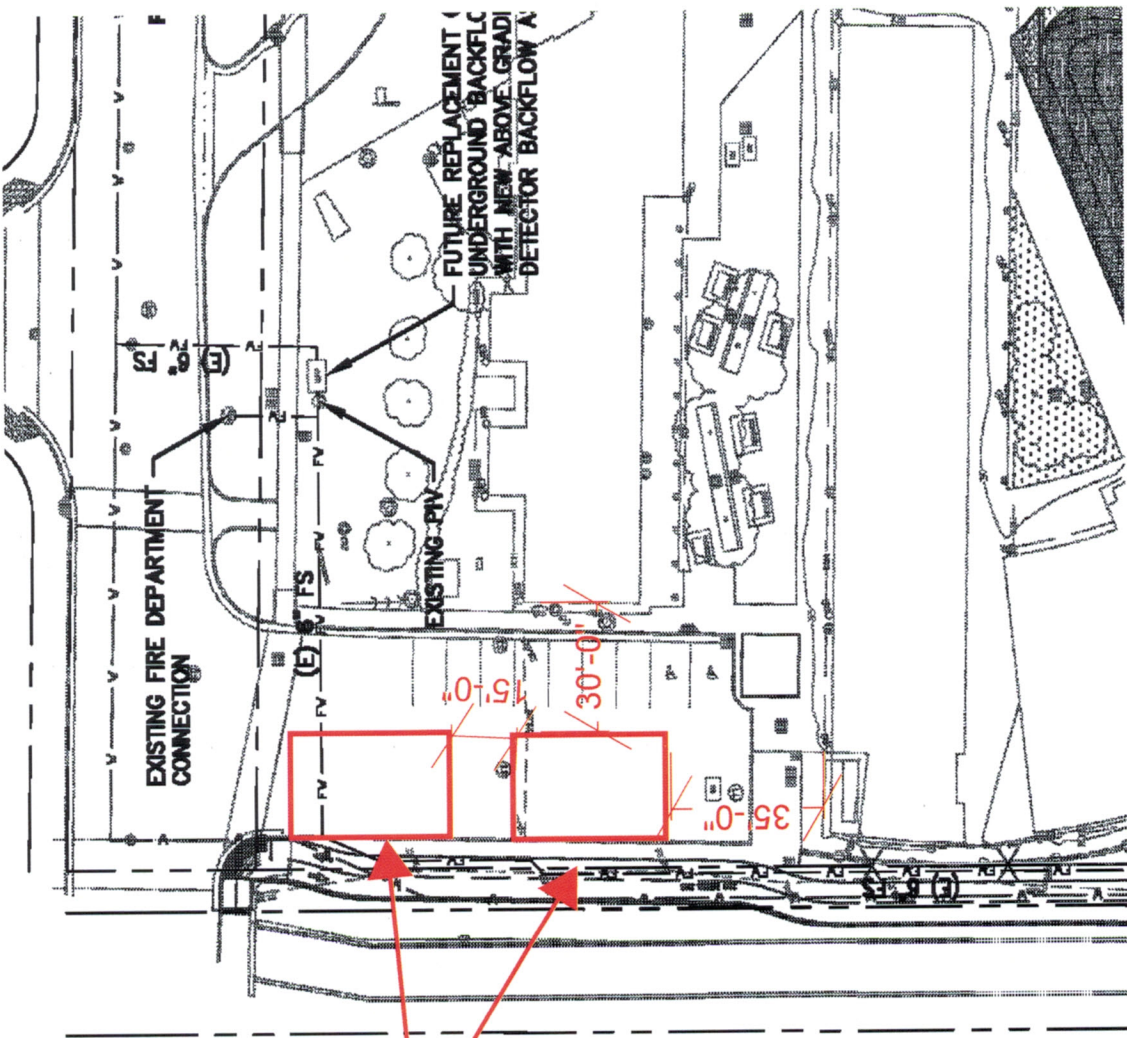
Exclusions:

- Any permits or permit fees
- Bonds
- Special Inspection Fees
- Utility Company Fees
- Any Hazmat or Abatement
- Air Quality Control Notifications
- Any items not specifically defined in scope of inclusions

Base Price: \$59,936.00

Connor Farotte

Vice President
Premier Builders Inc
(408) 710-5576



24' x 40'
portables

*30' dimension is to face of building. There is 25'-7" clear from portable to face of curb.