



Mountain View  
Whisman  
School District

# California Assessment of Student Performance and Progress (CAASPP)

Tara Vikjord: Director of Curriculum, Instruction, & Assessment

Cathy Baur: Chief Academic Officer

September 6, 2018

# Strategic Plan Alignment

**Goal 1:** Every student will be prepared for high school and 21st Century citizenship.

**Goal 2:** Achievement gaps will be eliminated for all student groups in all areas.



Mountain View  
Whisman  
School District

# CAASPP

# What is CAASPP?

- **C**alifornia **A**ssessment of **S**tudent **P**erformance and **P**rogress
- The “umbrella” of assessments in public education in California
- Smarter Balanced Assessments
  - ELA and Mathematics in grades 3 - 8 and 11
  - California Alternate Assessment (CAA) ELA and Math grades 3-8
  - California Science Test or California Alternate Assessment in Science in grades 5, 8, and 10 (field test - no results provided this year)

# What is CAASPP?

- Smarter Balanced Assessments in English Language Arts and Math include
  - Computer Adaptive Test
  - Performance Task
- Student Score Reports include
  - Growth from year to year
  - Provide results by area
    - ELA areas: Reading, Writing, Listening, Research/Inquiry
    - Math areas: Concepts & Procedures, Problem Solving & Modeling & Data Analysis, Communicating Reasoning
  - Information to help parents/guardians and teachers work together to improve student learning



Mountain View  
Whisman  
School District

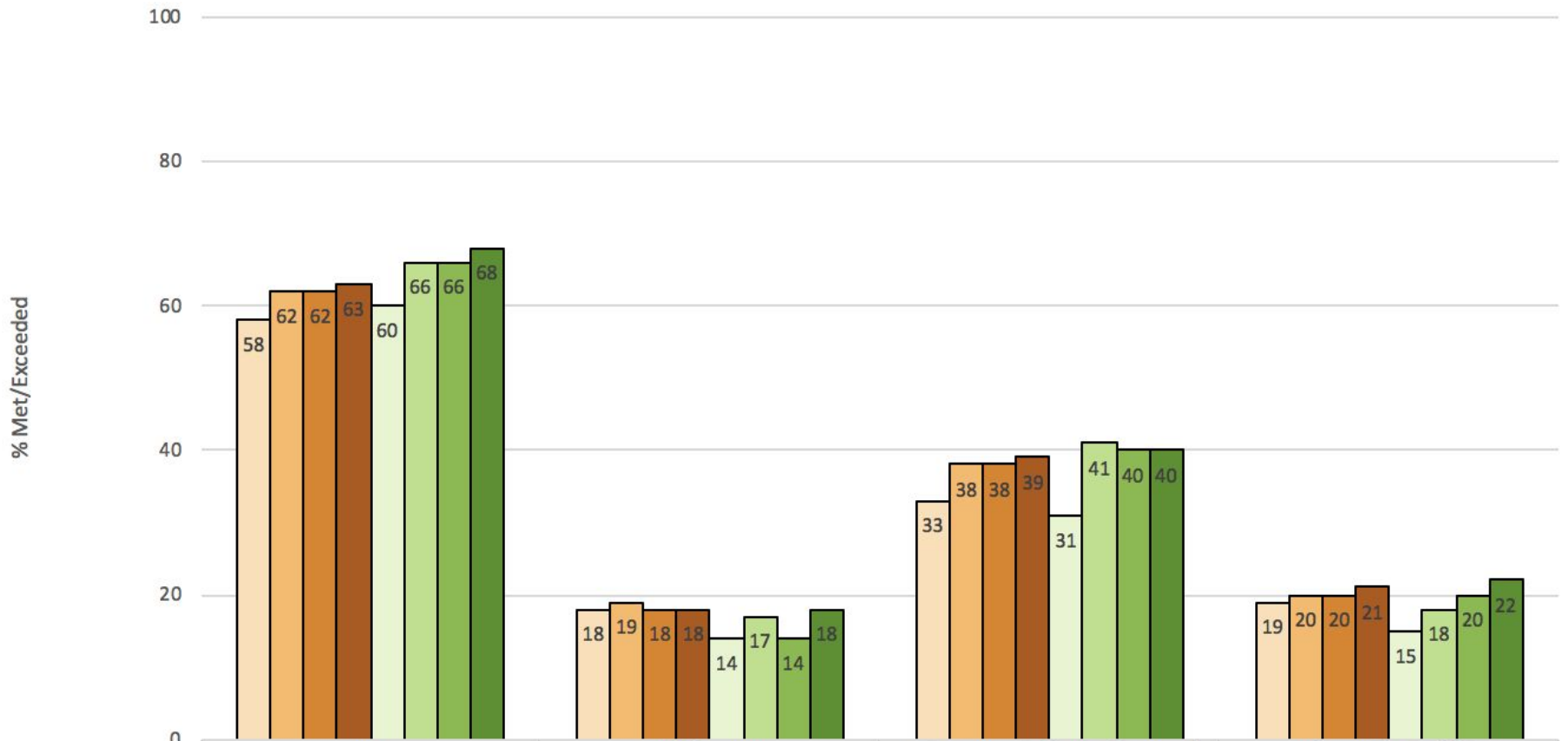
# Results

# Demographic Data (testing grades only)

	<b>2014-2015</b>	<b>2015-2016</b>	<b>2016-2017</b>	<b>2017-2018</b>
<b>English Learners*</b>	27% (861)	24% (775)	20% (659)	19% (611)
<b>Reclassified Fluent English Proficient*</b>	23% (725)	24% (769)	26% (835)	26% (831)
<b>SocioEconomically Disadvantaged</b>	42% (1339)	40% (1284)	38% (1233)	38% (1231)
<b>Students with Disabilities</b>	12% (368)	12% (377)	12% (380)	11% (365)
<b>White</b>	28% (903)	28% (915)	30% (955)	29% (950)
<b>Asian</b>	14% (460)	15% (471)	12% (394)	13% (424)
<b>Hispanic/Latino</b>	46% (1477)	44% (1433)	43% (1376)	42% (1337)
<b>Total Enrollment</b>	3185	3225	3223	3222

\*English Language Learners/Reclassified Fluent English Proficient are fluid subgroups

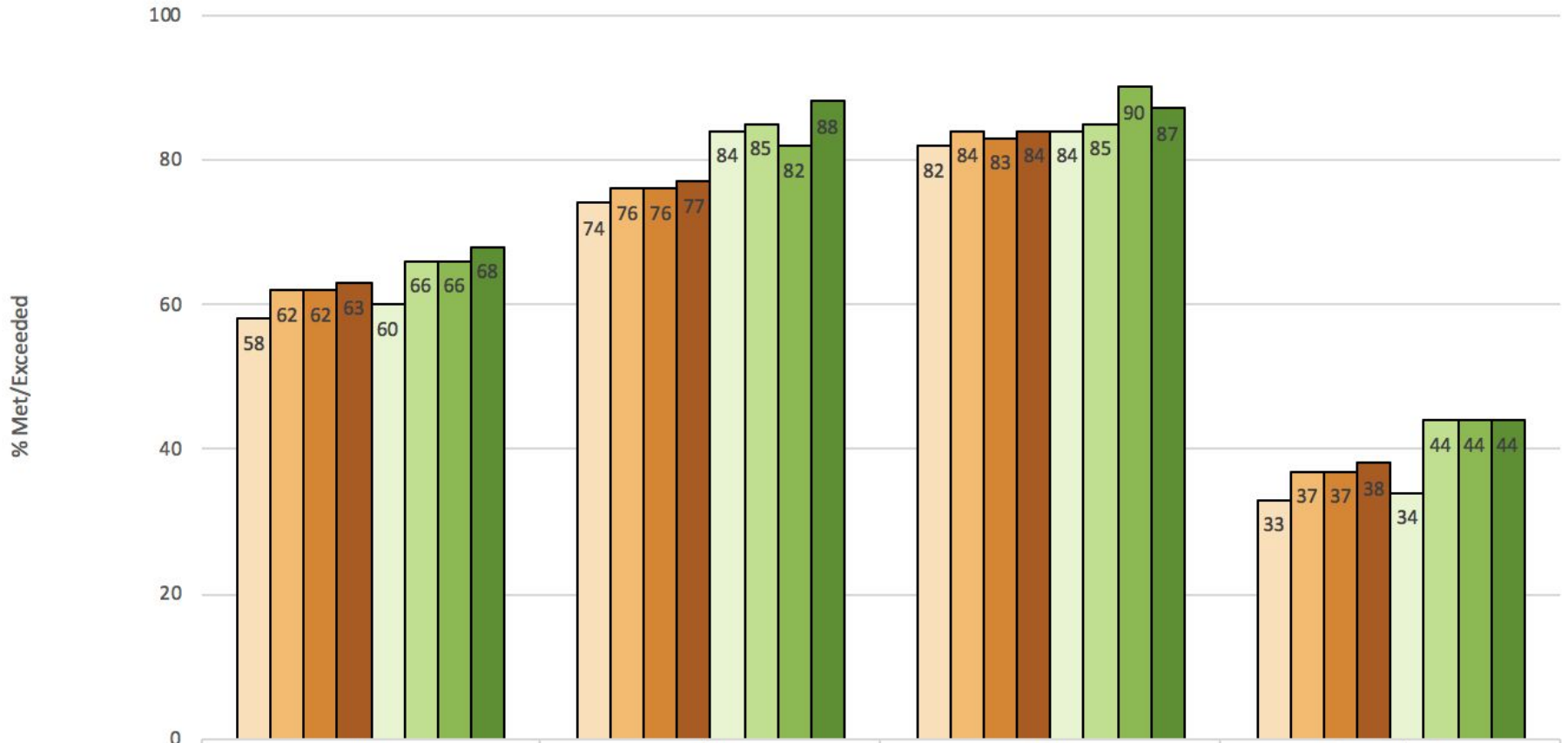
## CAASPP ELA County and District Subgroups



	ALL	English Learners	Socio-Economically Disadvantaged	Students with Disabilities
County 2015 ELA	58	18	33	19
County 2016 ELA	62	19	38	20
County 2017 ELA	62	18	38	20
County 2018 ELA	63	18	39	21
MVWSD 2015 ELA	60	14	31	15
MVWSD 2016 ELA	66	17	41	18
MVWSD 2017 ELA	66	14	40	20
MVWSD 2018 ELA	68	18	40	22

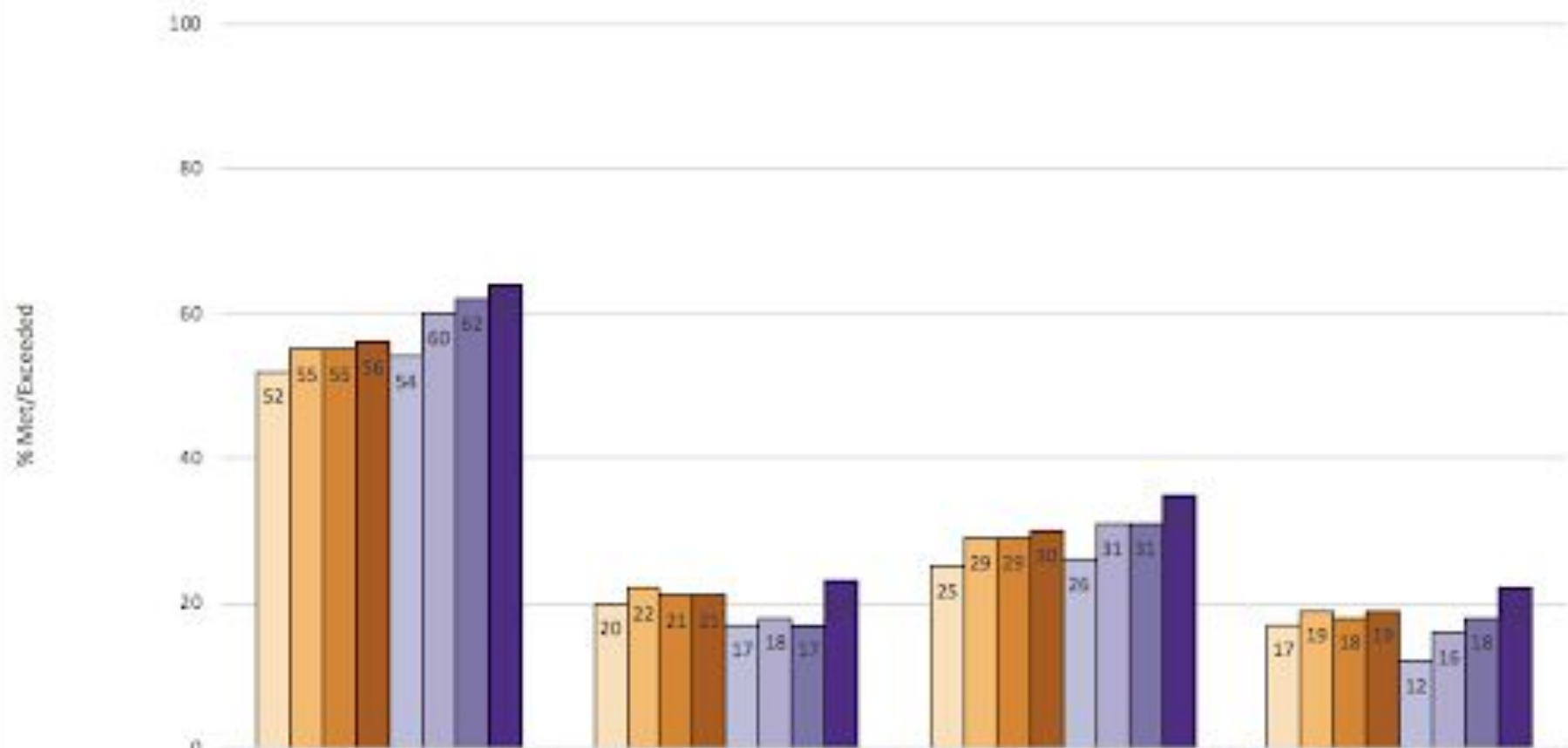


## CAASPP ELA County and District Ethnicity



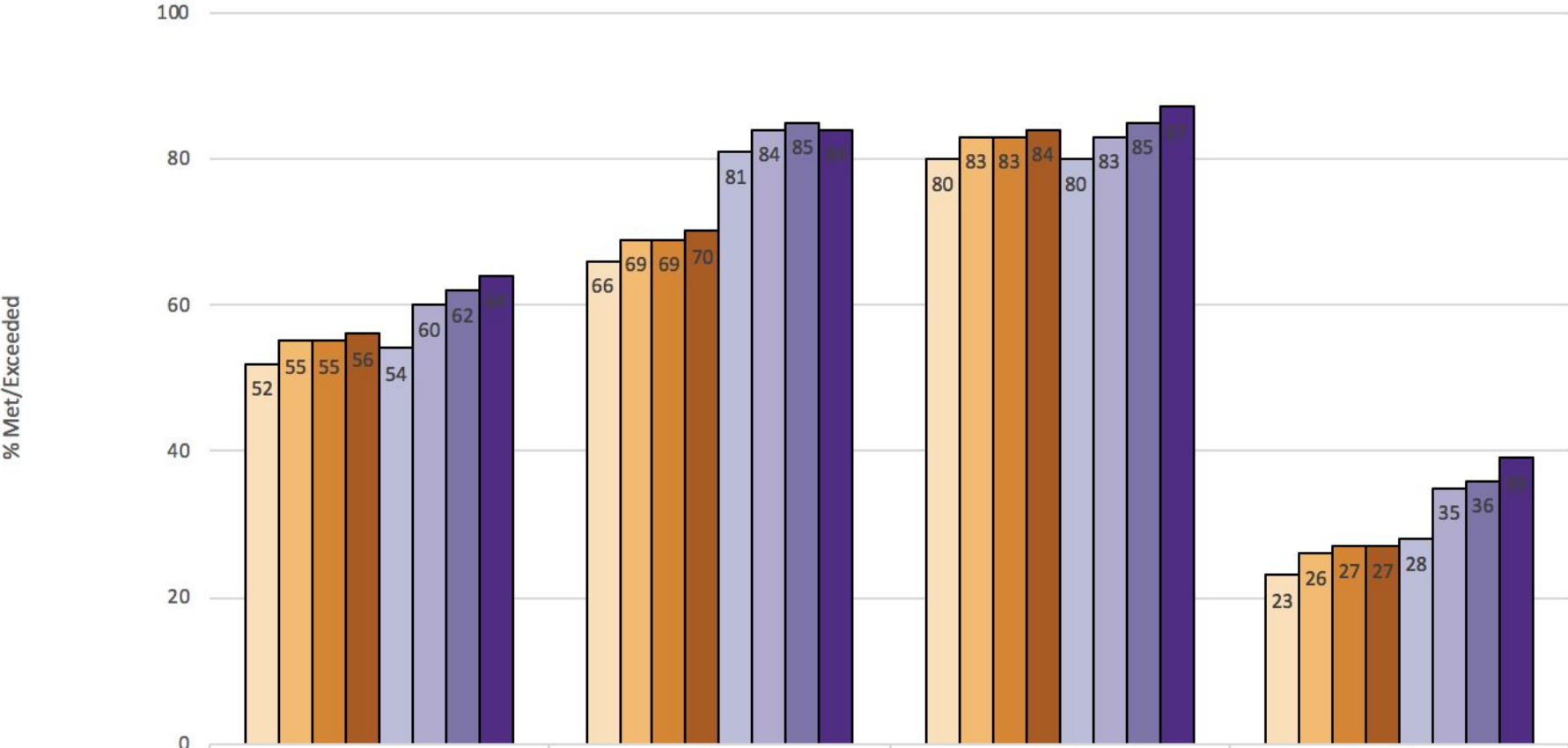
	ALL	White	Asian	Hispanic/Latino
County 2015 ELA	58	74	82	33
County 2016 ELA	62	76	84	37
County 2017 ELA	62	76	83	37
County 2018 ELA	63	77	84	38
MVWSD 2015 ELA	60	84	84	34
MVWSD 2016 ELA	66	85	85	44
MVWSD 2017 ELA	66	82	90	44
MVWSD 2018 ELA	68	88	87	44

## CAASPP Math County and District Subgroups



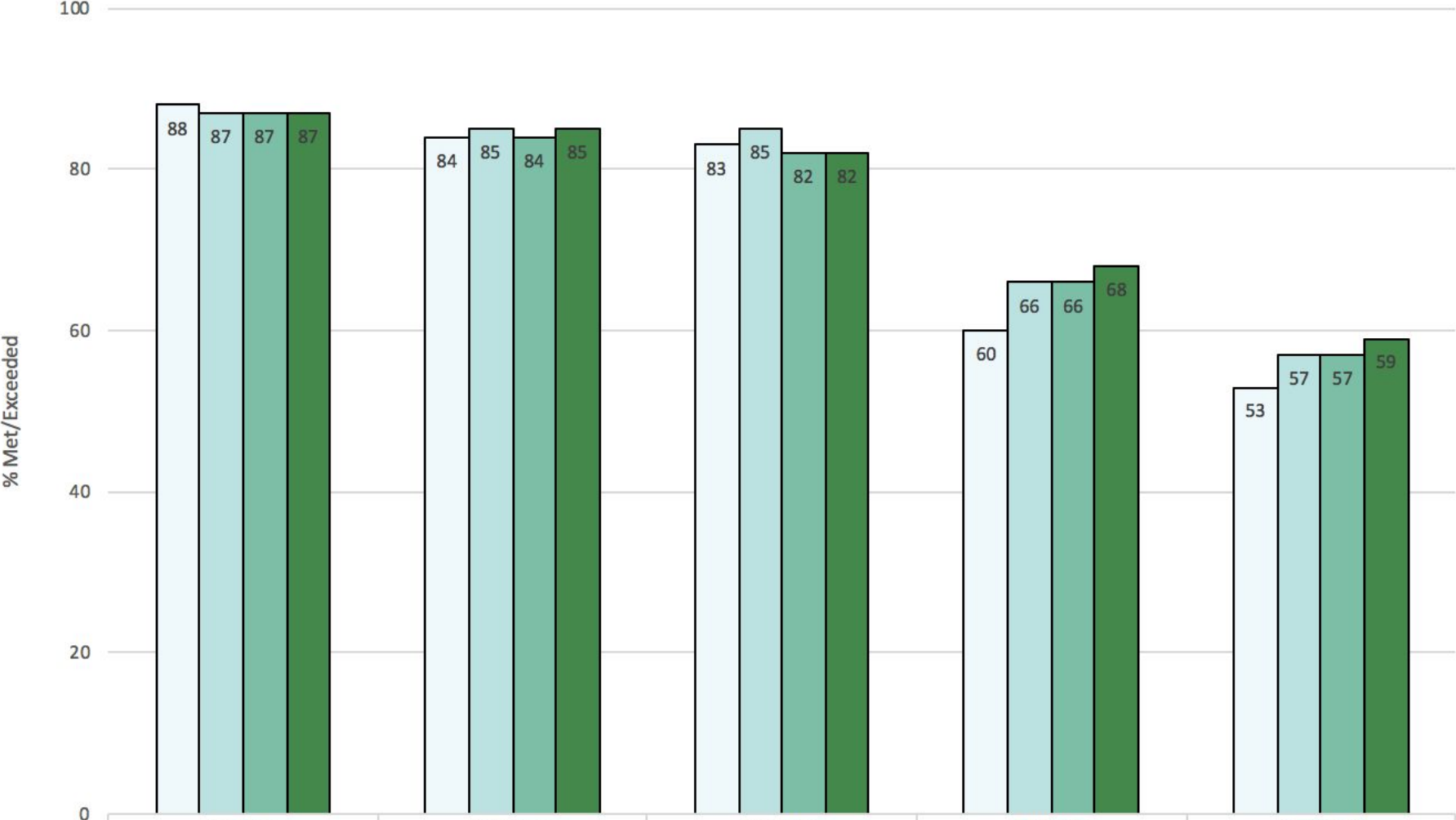
	ALL	English Learners	Socio-Economically Disadvantaged	Students with Disabilities
County 2015 Math	52	20	25	17
County 2016 Math	55	22	29	19
County 2017 Math	55	21	29	18
County 2018 Math	56	21	30	19
MVWSD 2015 Math	54	17	26	12
MVWSD 2016 Math	60	18	31	16
MVWSD 2017 Math	62	17	31	18
MVWSD 2018 Math	64	23	35	22

# CAASPP Math County and District Ethnicity



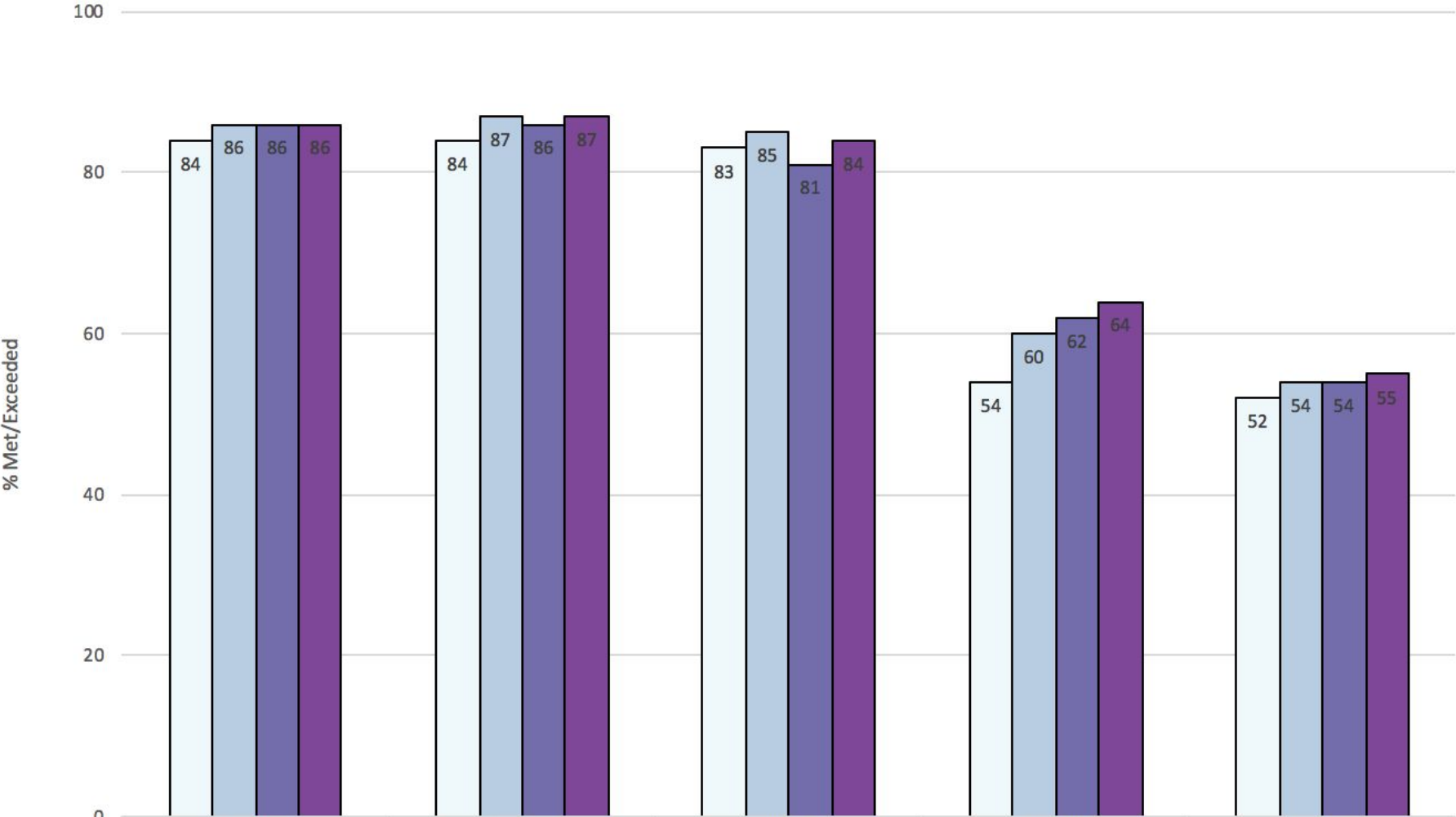
	ALL	White	Asian	Hispanic/Latino
County 2015 Math	52	66	80	23
County 2016 Math	55	69	83	26
County 2017 Math	55	69	83	27
County 2018 Math	56	70	84	27
MVWSD 2015 Math	54	81	80	28
MVWSD 2016 Math	60	84	83	35
MVWSD 2017 Math	62	85	85	36
MVWSD 2018 Math	64	84	87	39

# CAASPP ELA Neighboring Districts



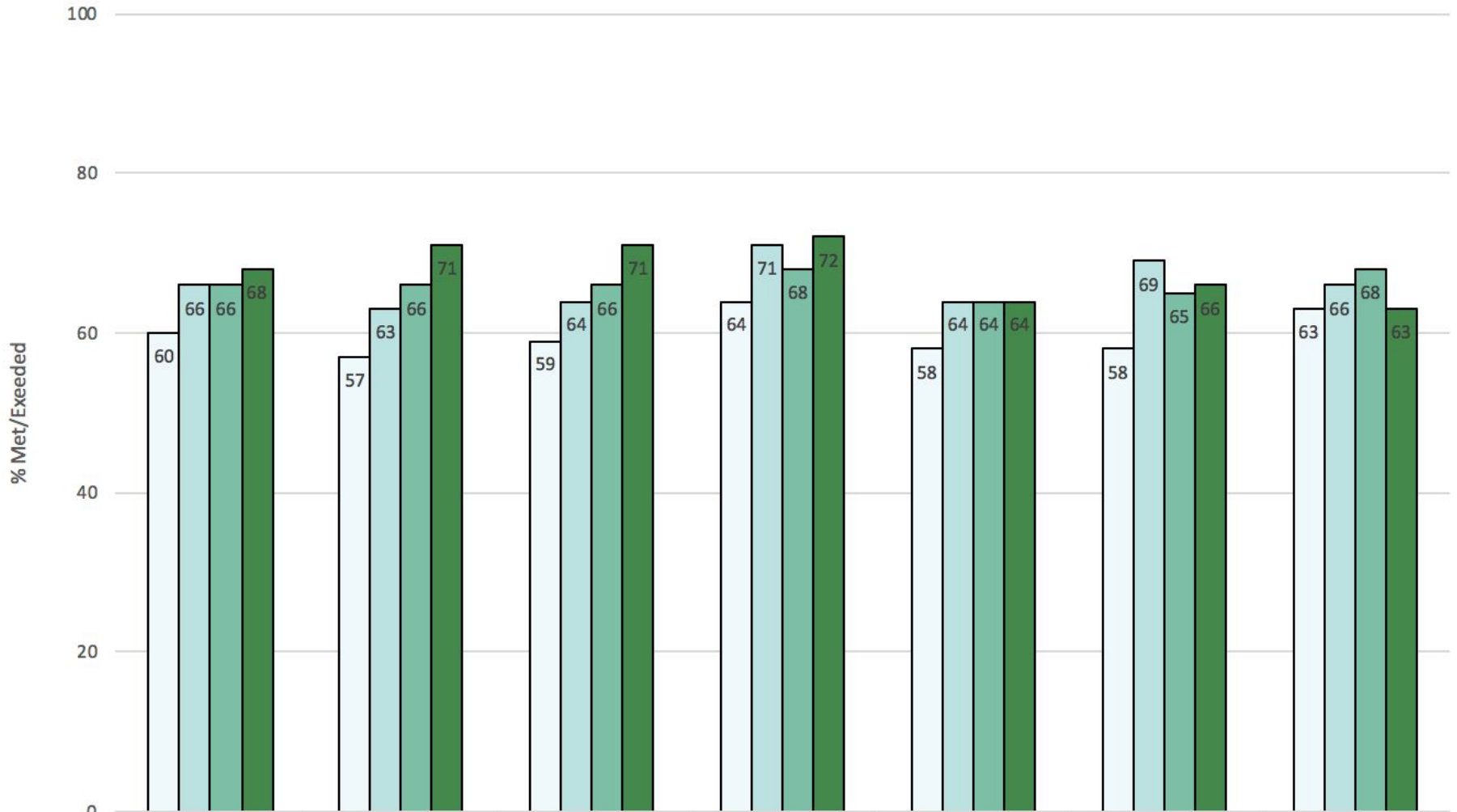
	Los Altos	Cupertino	Palo Alto	MVWSD	Sunnyvale
2015 ELA	88	84	83	60	53
2016 ELA	87	85	85	66	57
2017 ELA	87	84	82	66	57
2018 ELA	87	85	82	68	59

# CAASPP Math Neighboring Districts



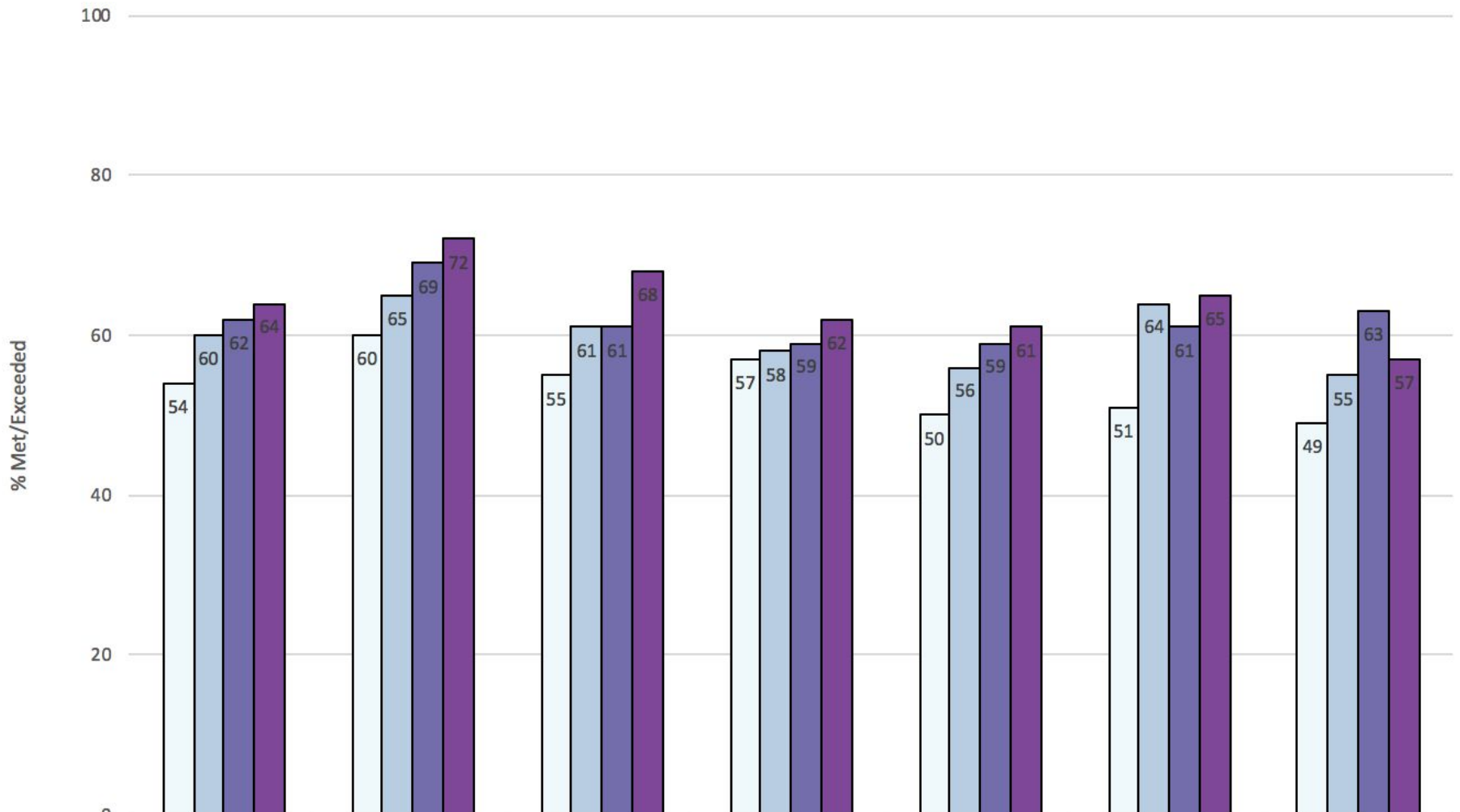
	Los Altos	Cupertino	Palo Alto	MVWSD	Sunnyvale
2015 Math	84	84	83	54	52
2016 Math	86	87	85	60	54
2017 Math	86	86	81	62	54
2018 Math	86	87	84	64	55

## CAASPP ELA By Grade Level



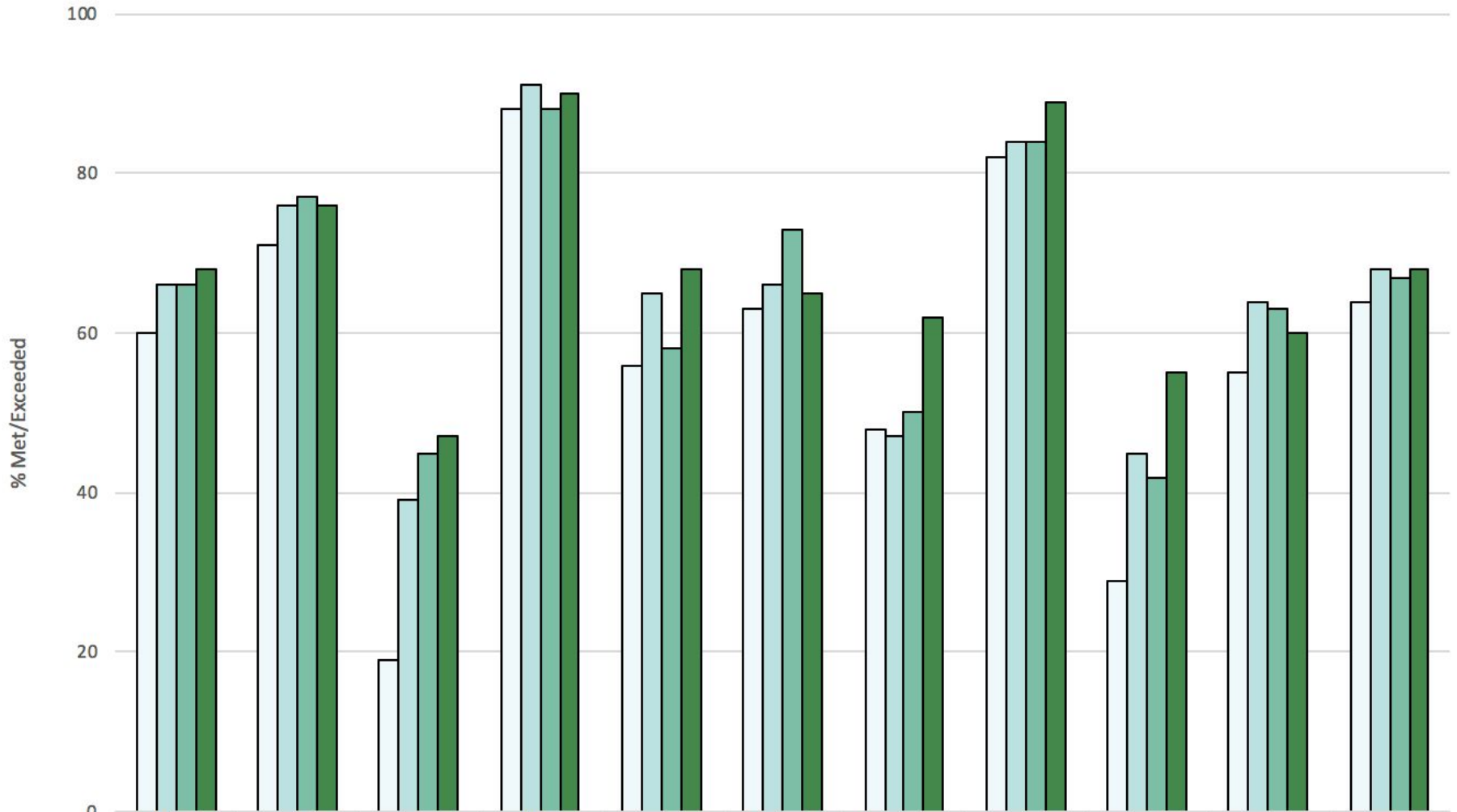
	MVWSD	Grade 3	Grade 4	Grade 5	Grade 6	Grade 7	Grade 8
2015 ELA	60	57	59	64	58	58	63
2016 ELA	66	63	64	71	64	69	66
2017 ELA	66	66	66	68	64	65	68
2018 ELA	68	71	71	72	64	66	63

## CAASPP Math By Grade Level



	MVWSD	Grade 3	Grade 4	Grade 5	Grade 6	Grade 7	Grade 8
2015 Math	54	60	55	57	50	51	49
2016 Math	60	65	61	58	56	64	55
2017 Math	62	69	61	59	59	61	63
2018 Math	64	72	68	62	61	65	57

## CAASPP ELA MVWSD Schools



	MVWSD	Bubb	Castro	Huff	Landels	Mistral	Monta Loma	Stevenson	Theuerkauf	Crittenden	Graham
2015 ELA	60	71	19	88	56	63	48	82	29	55	64
2016 ELA	66	76	39	91	65	66	47	84	45	64	68
2017 ELA	66	77	45	88	58	73	50	84	42	63	67
2018 ELA	68	76	47	90	68	65	62	89	55	60	68

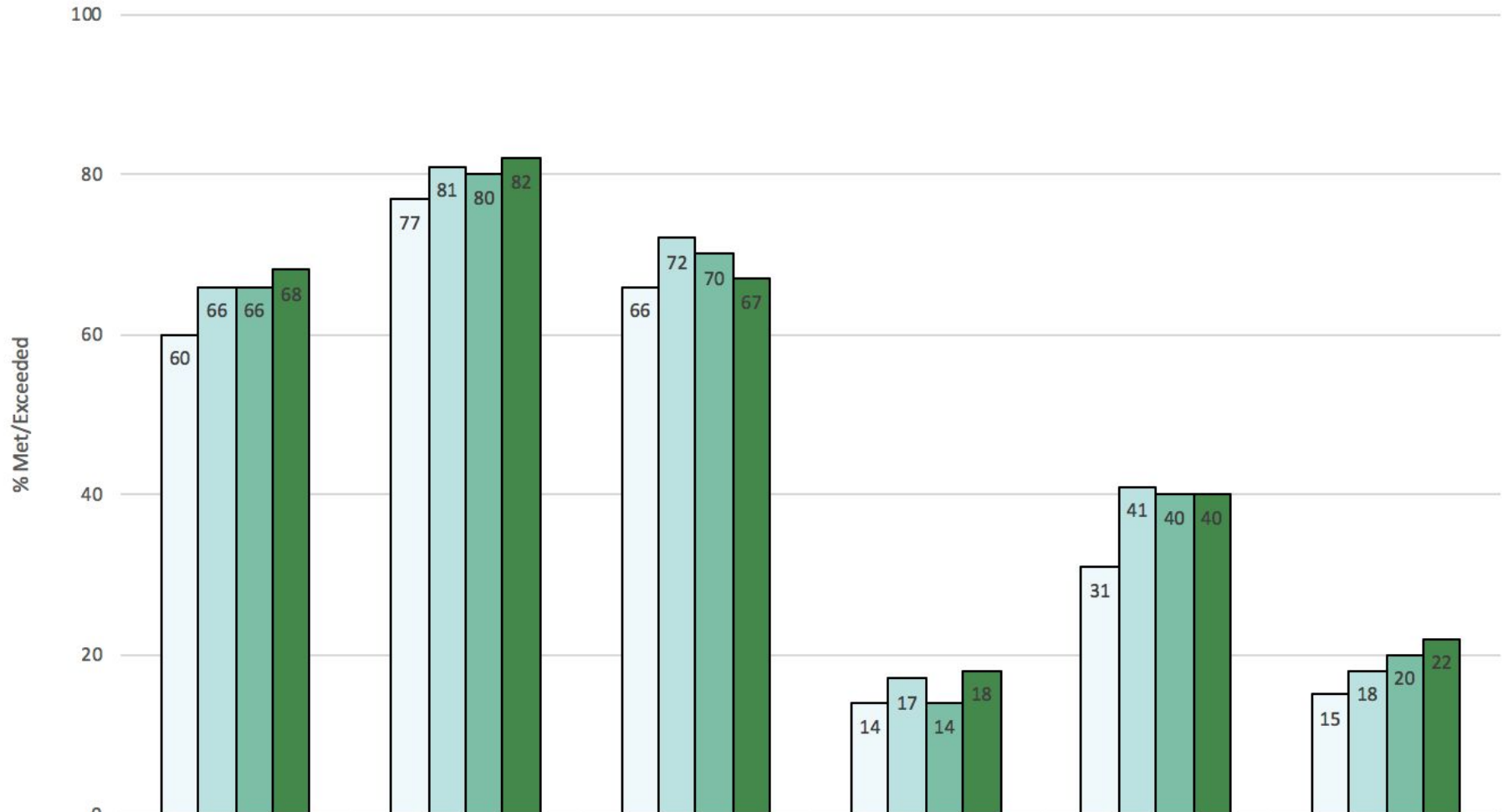


## CAASPP Math MVWSD Schools



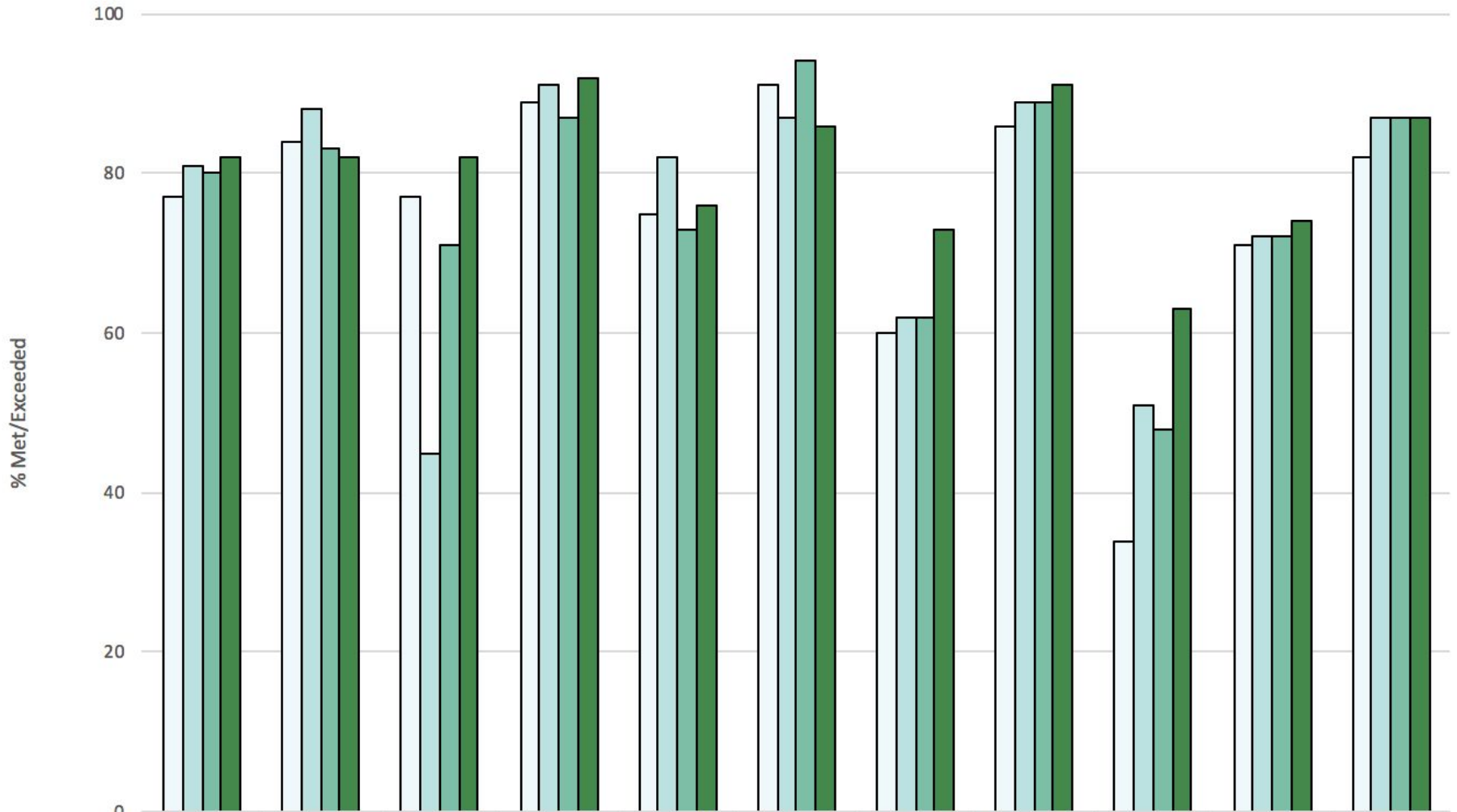
	MVWSD	Bubb	Castro	Huff	Landels	Mistral	Monta Loma	Stevenson	Theuerkauf	Crittenden	Graham
2015 Math	54	73	16	85	68	59	45	85	24	41	58
2016 Math	60	74	32	88	53	60	50	81	38	51	63
2017 Math	62	76	41	87	53	67	44	85	30	55	65
2018 Math	64	75	39	86	64	68	51	91	47	56	66

## CAASPP ELA By Subgroup



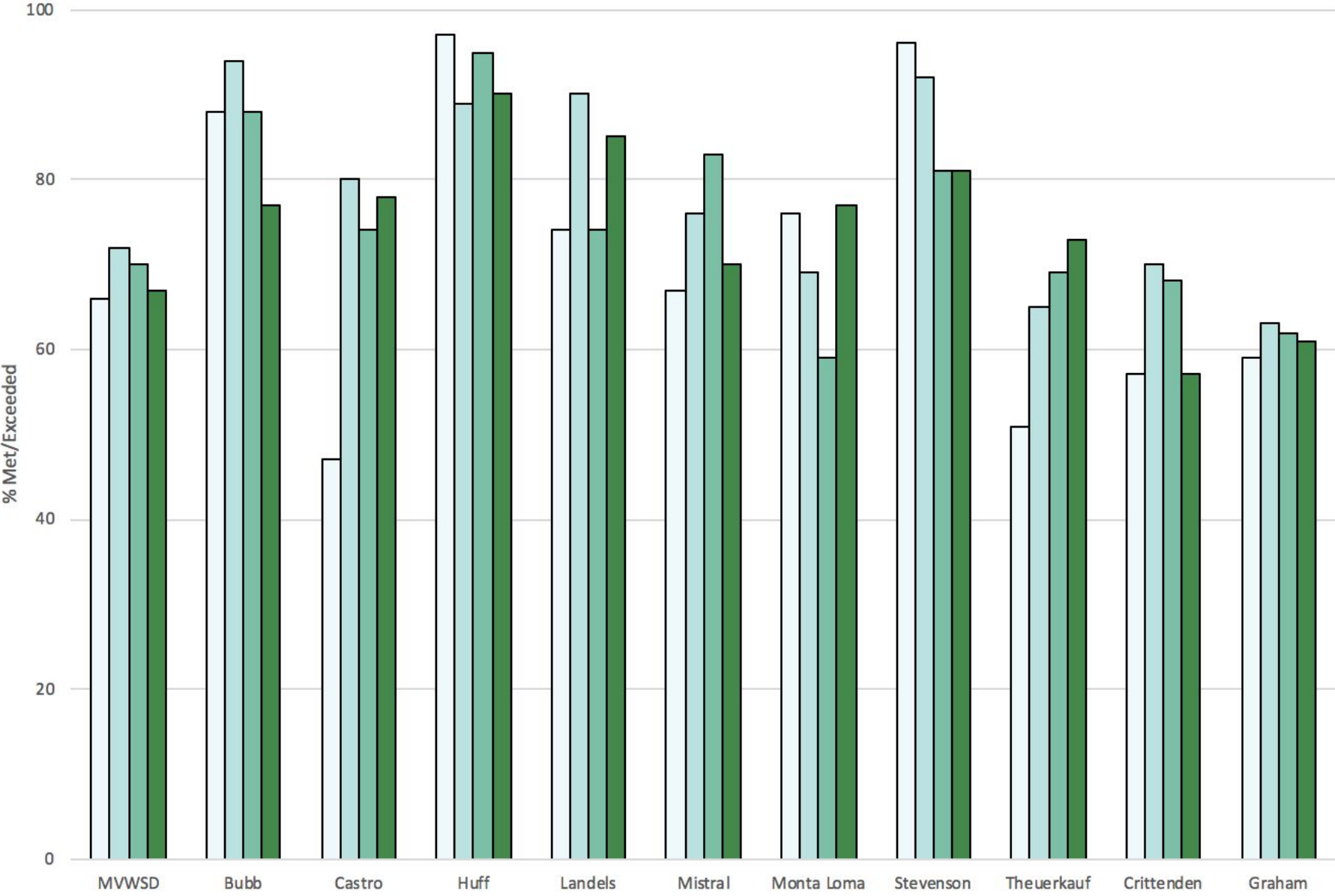
	MVWSD	English Only	RFEP	English Learner	Socio-Economically Disadvantaged	Students with Disabilities
2015 ELA	60	77	66	14	31	15
2016 ELA	66	81	72	17	41	18
2017 ELA	66	80	70	14	40	20
2018 ELA	68	82	67	18	40	22

## CAASPP ELA English Only

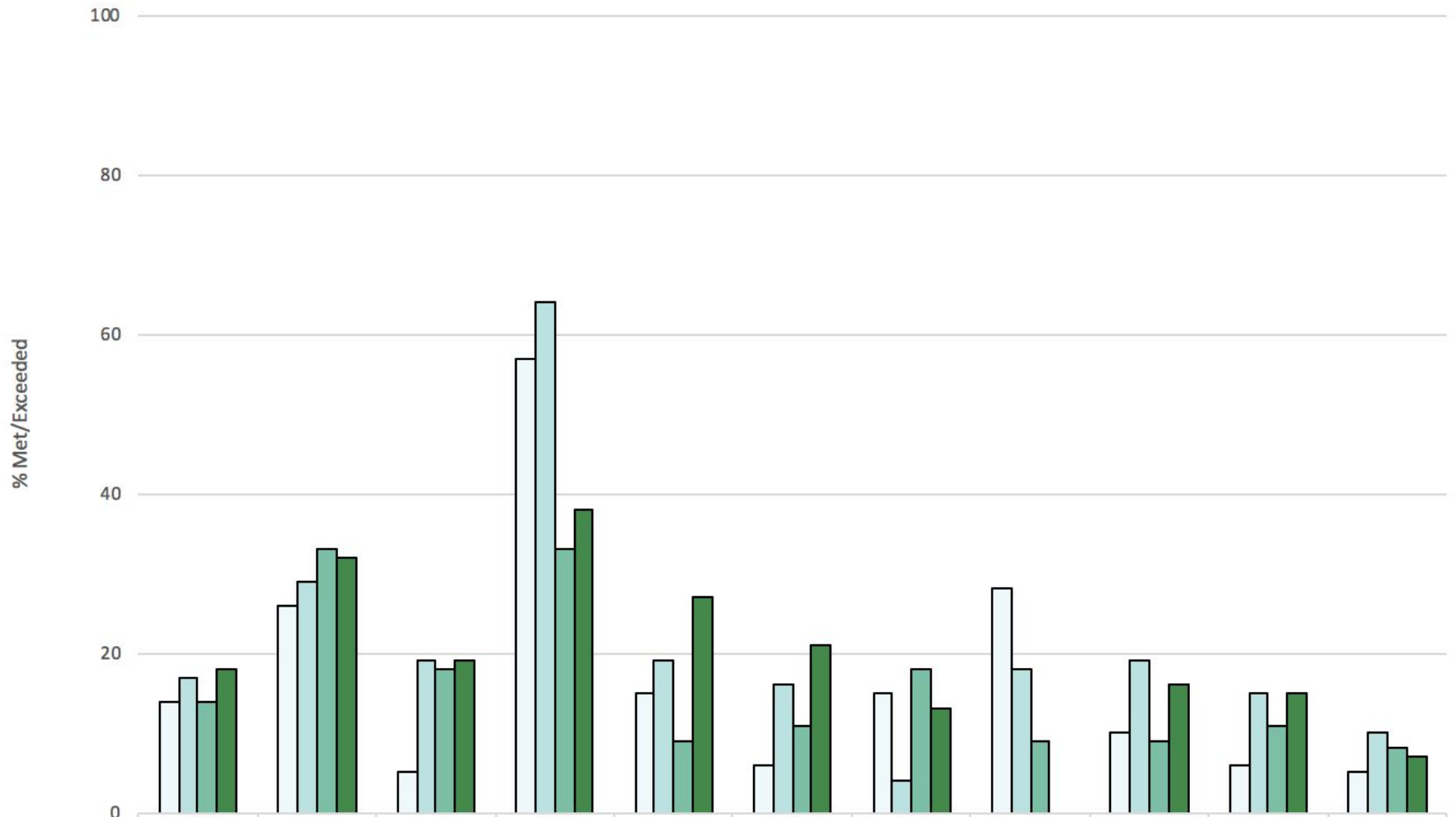


	MVWSD	Bubb	Castro	Huff	Landels	Mistral	Monta Loma	Stevenson	Theuerkauf	Crittenden	Graham
2015 EO ELA	77	84	77	89	75	91	60	86	34	71	82
2016 EO ELA	81	88	45	91	82	87	62	89	51	72	87
2017 EO ELA	80	83	71	87	73	94	62	89	48	72	87
2018 EO ELA	82	82	82	92	76	86	73	91	63	74	87

# CAASPP ELA Reclassified Fluent English Proficient

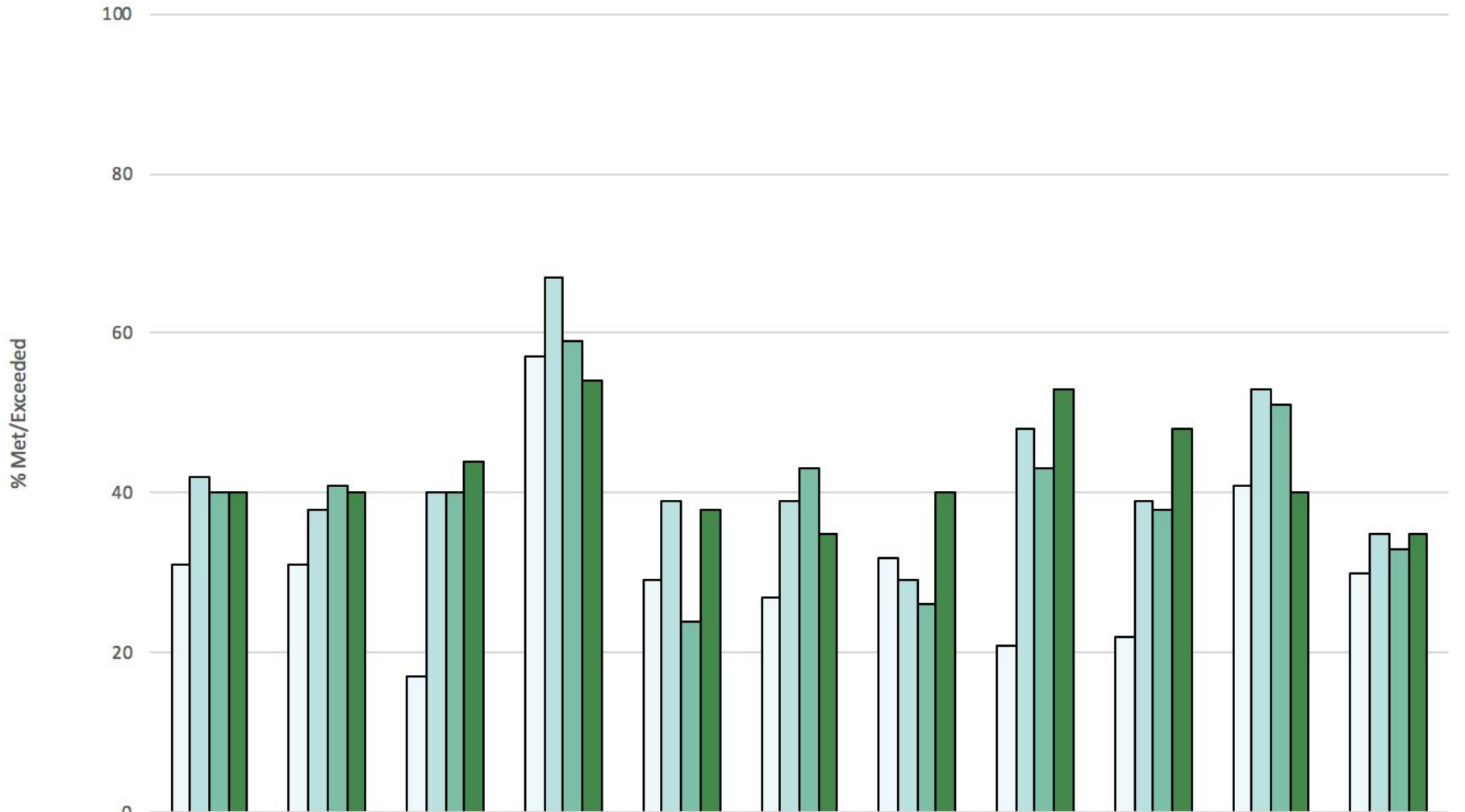


## CAASPP ELA English Learners



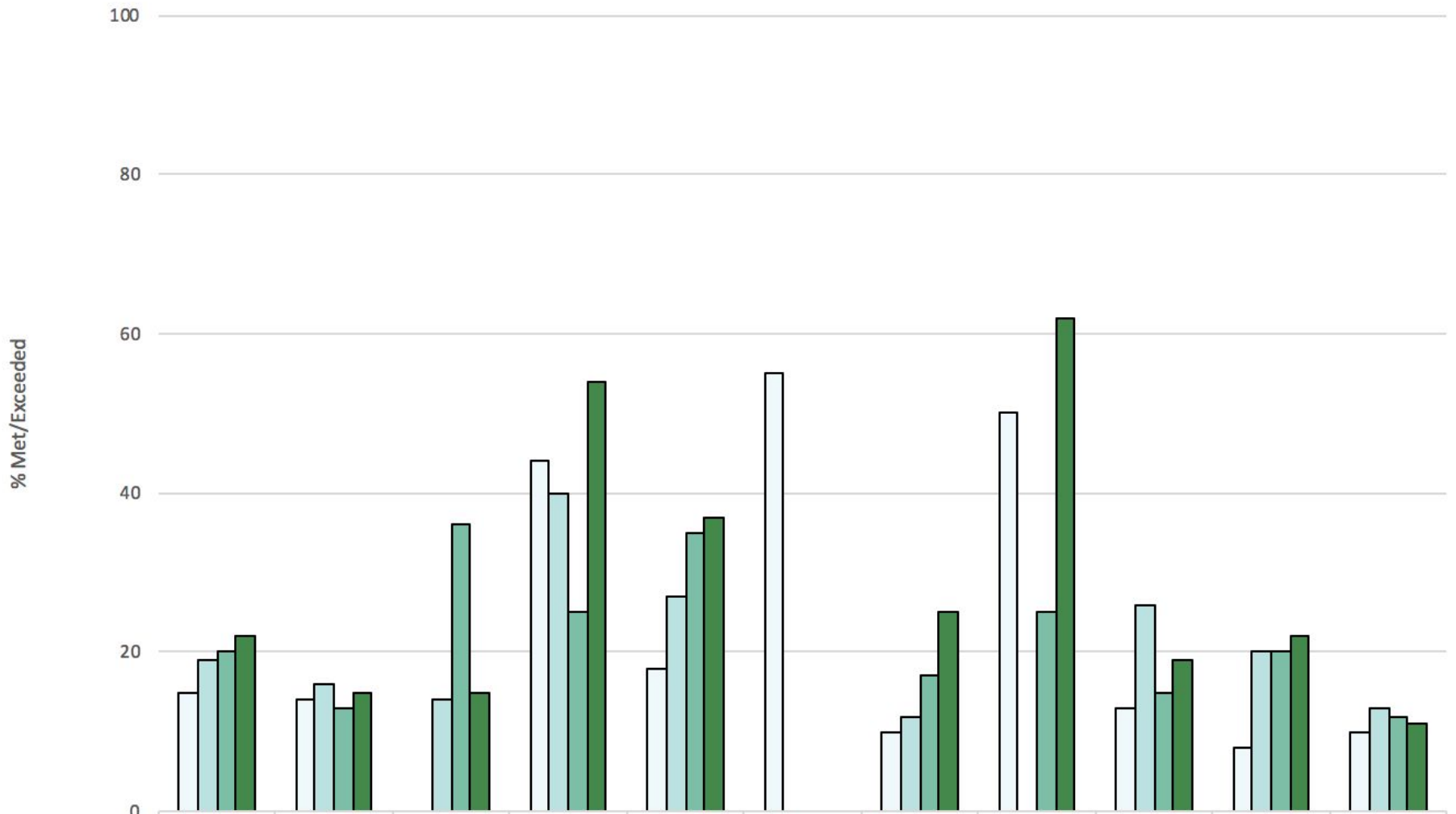
	MVWSD	Bubb	Castro	Huff	Landels	Mistral	Monta Loma	Stevenson	Theuerkauf	Crittenden	Graham
2015 ELELA	14	26	5	57	15	6	15	28	10	6	5
2016 ELELA	17	29	19	64	19	16	4	18	19	15	10
2017 ELELA	14	33	18	33	9	11	18	9	9	11	8
2018 ELELA	18	32	19	38	27	21	13	n/a	16	15	7

## CAASPP ELA Socio-Economically Disadvantaged



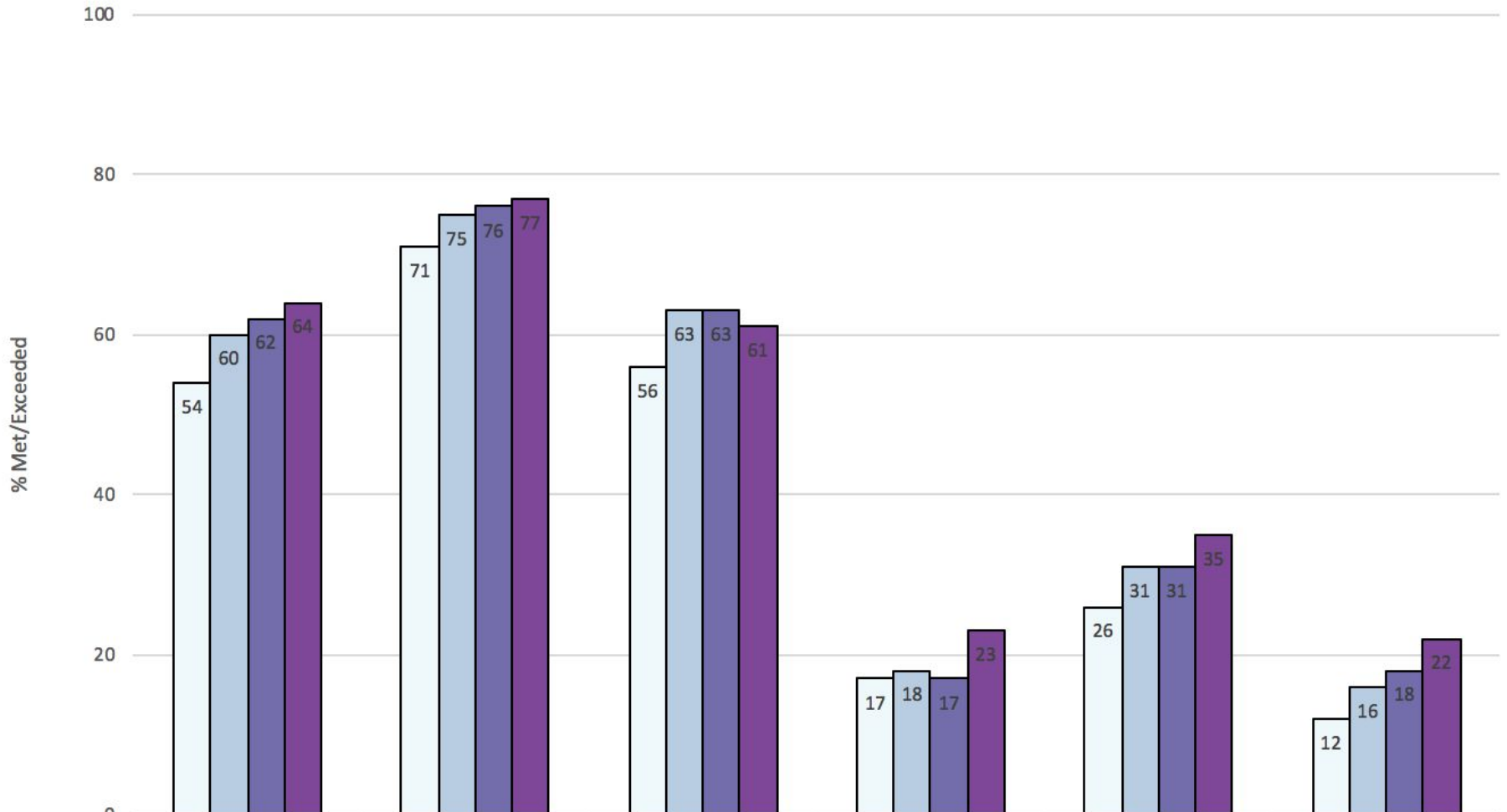
	MVWSD	Bubb	Castro	Huff	Landels	Mistral	Monta Loma	Stevenson	Theuerkauf	Crittenden	Graham
2015 SEDELA	31	31	17	57	29	27	32	21	22	41	30
2016 SEDELA	42	38	40	67	39	39	29	48	39	53	35
2017 SEDELA	40	41	40	59	24	43	26	43	38	51	33
2018 SEDELA	40	40	44	54	38	35	40	53	48	40	35

## CAASPP ELA Students with Disabilities



	MVWSD	Bubb	Castro	Huff	Landels	Mistral	Monta Loma	Stevenson	Theuerkauf	Crittenden	Graham
2015 SED ELA	15	14	0	44	18	55	10	50	13	8	10
2016 SWD ELA	19	16	14	40	27	n/a	12	n/a	26	20	13
2017 SWD ELA	20	13	36	25	35	n/a	17	25	15	20	12
2018 SWD ELA	22	15	15	54	37	n/a	25	62	19	22	11

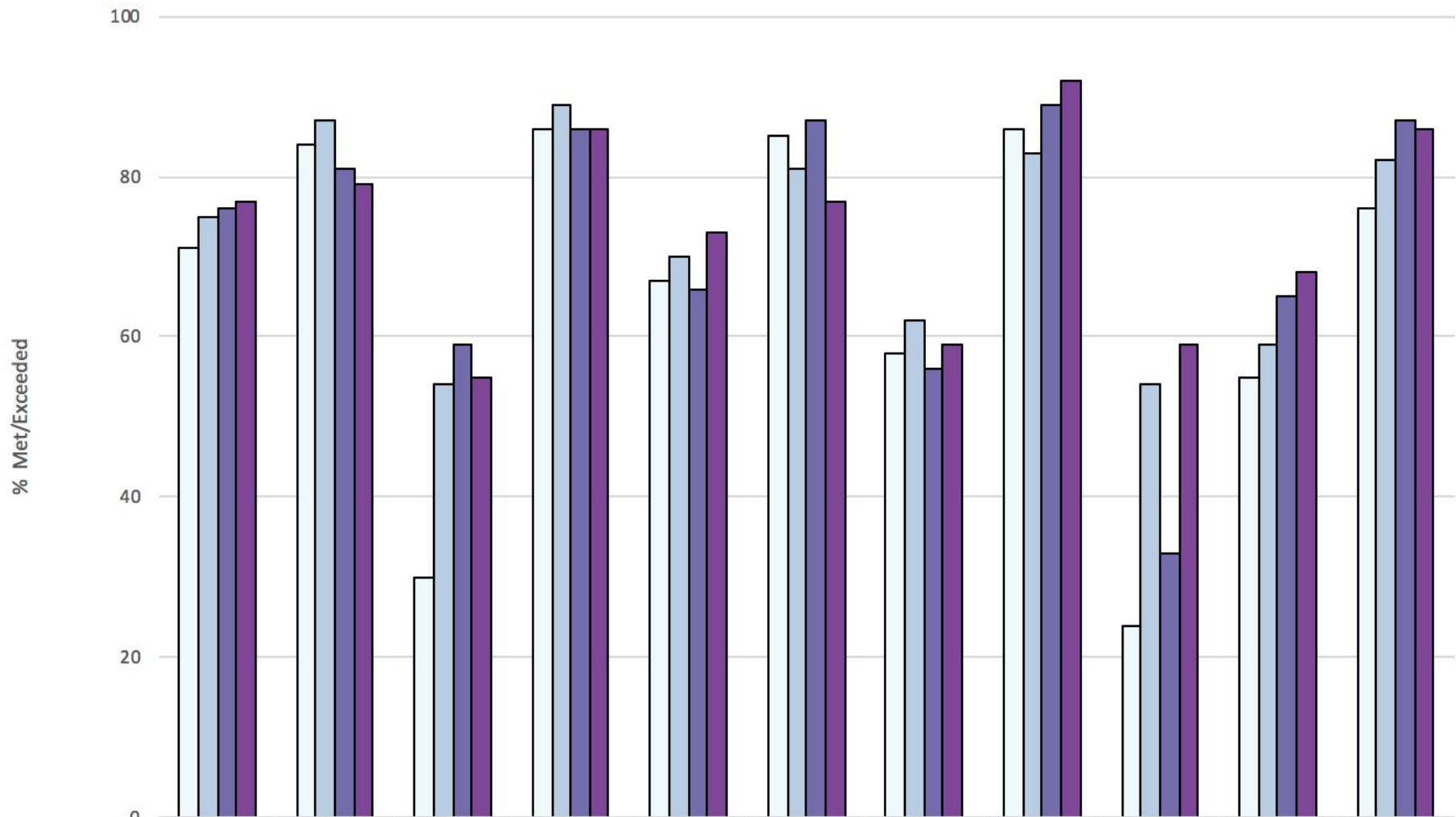
## CAASPP Math By Subgroup



	MVWSD	English Only	RFEF	English Learner	Socio-Economically Disadvantaged	Students with Disabilities
2015 Math	54	71	56	17	26	12
2016 Math	60	75	63	18	31	16
2017 Math	62	76	63	17	31	18
2018 Math	64	77	61	23	35	22

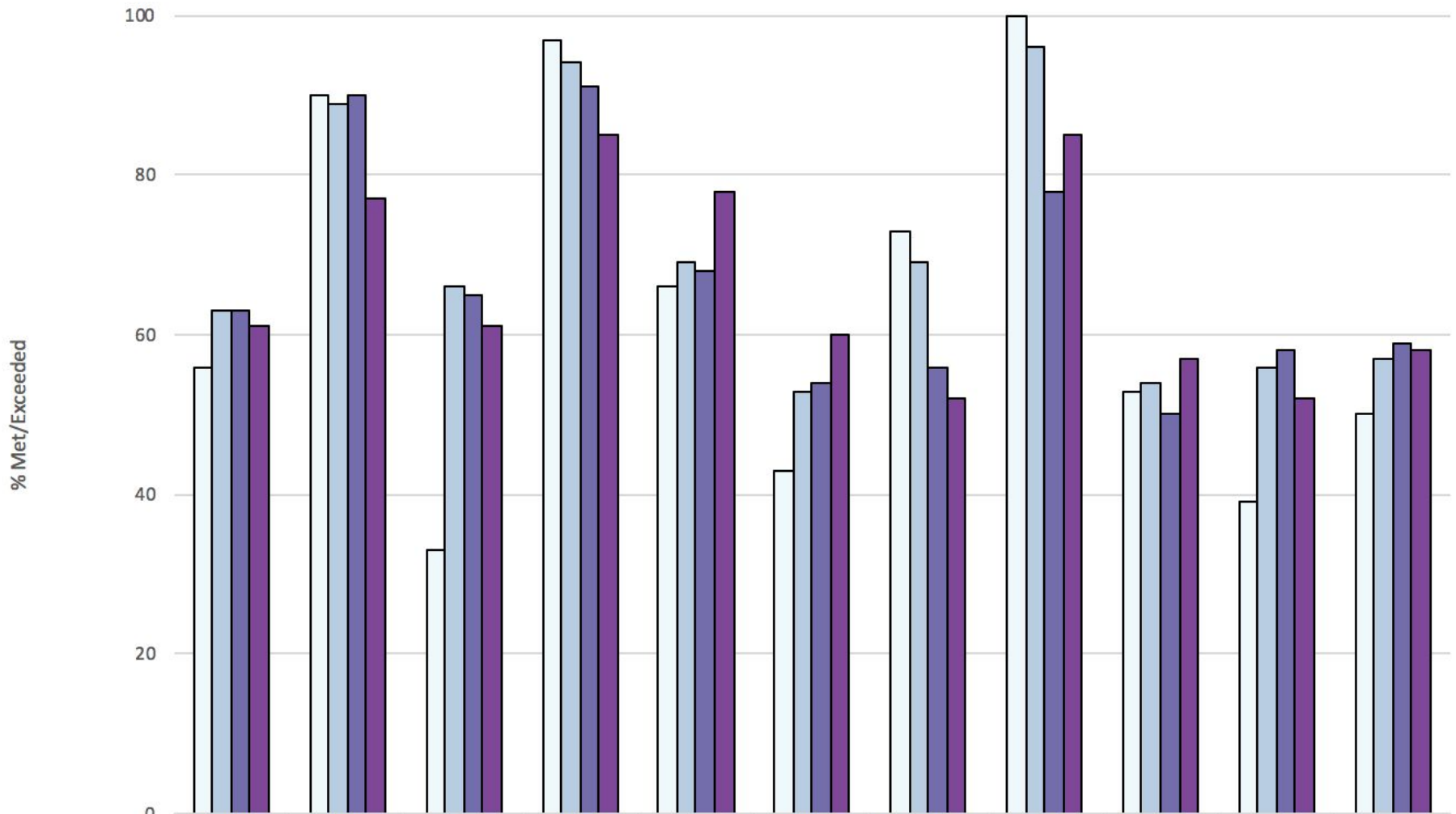


## CAASPP Math English Only



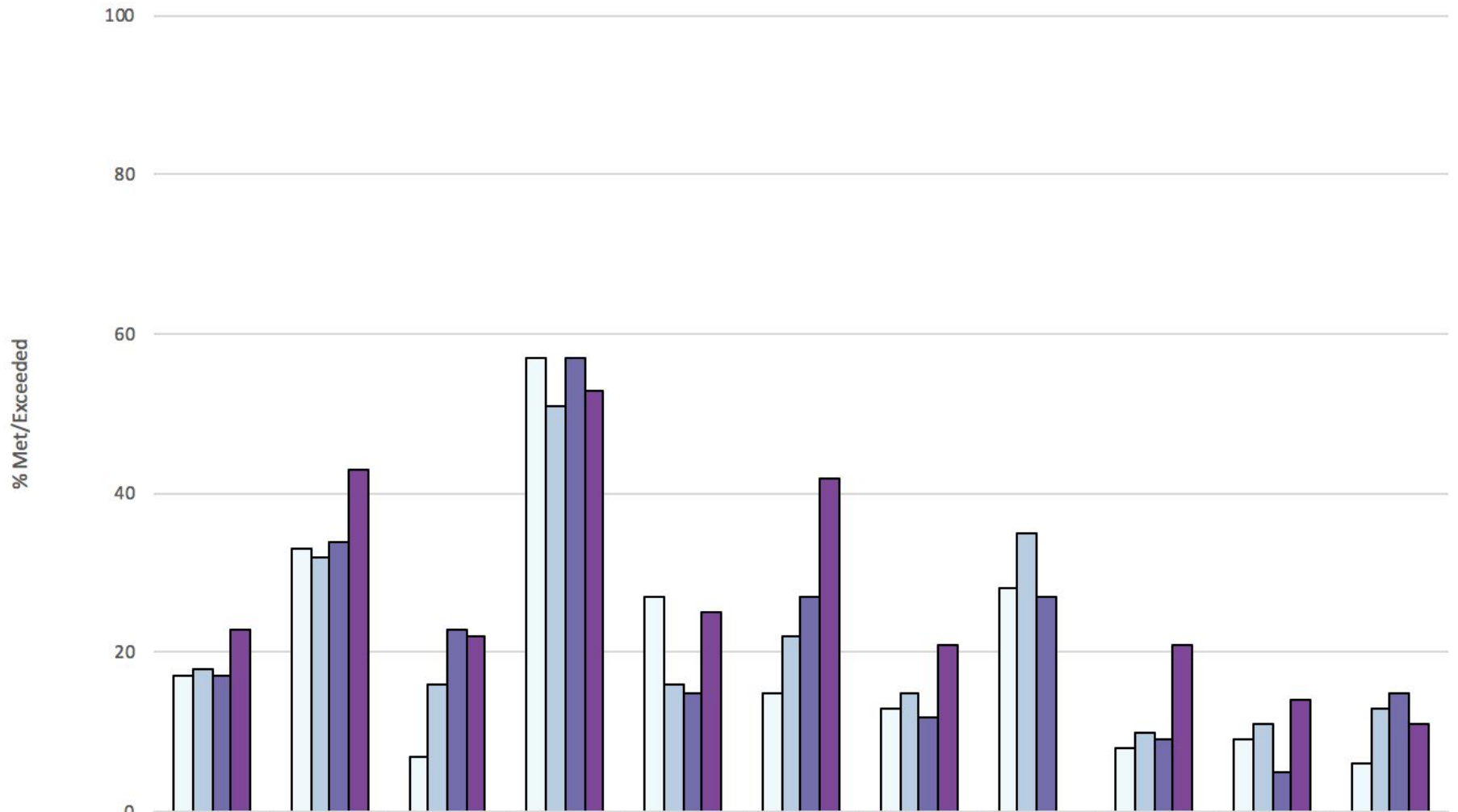
	MVWSD	Bubb	Castro	Huff	Landels	Mistral	Monta Loma	Stevenson	Theuerkauf	Crittenden	Graham
2015 EO Math	71	84	30	86	67	85	58	86	24	55	76
2016 EO Math	75	87	54	89	70	81	62	83	54	59	82
2017 EO Math	76	81	59	86	66	87	56	89	33	65	87
2018 EO Math	77	79	55	86	73	77	59	92	59	68	86

## CAASPP Math Reclassified Fluent English Proficient



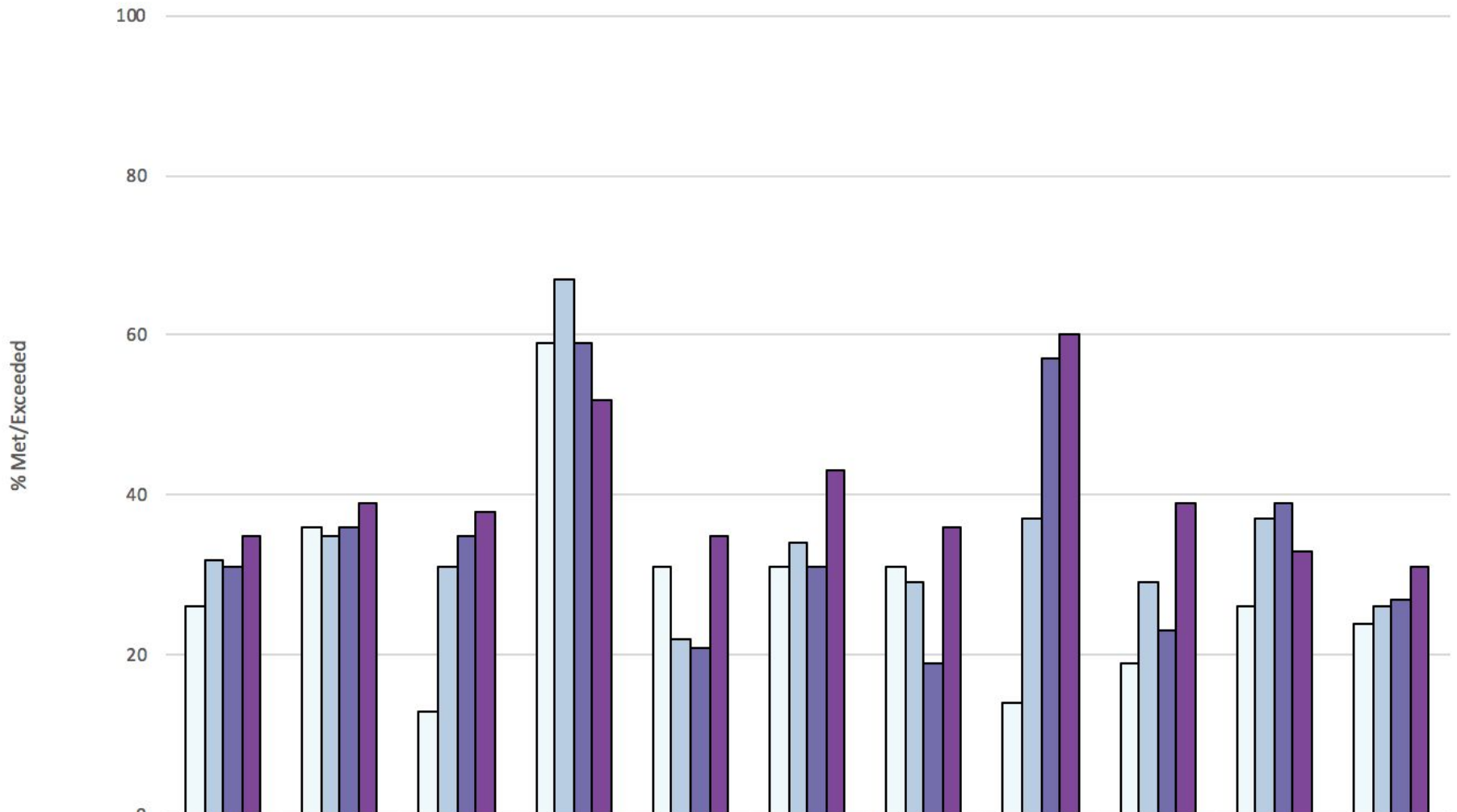
	MVWSD	Bubb	Castro	Huff	Landels	Mistral	Monta Loma	Stevenson	Theuerkauf	Crittenden	Graham
2015 RFEP Math	56	90	33	97	66	43	73	100	53	39	50
2016 RFEP Math	63	89	66	94	69	53	69	96	54	56	57
2017 RFEP Math	63	90	65	91	68	54	56	78	50	58	59
2018 RFEP Math	61	77	61	85	78	60	52	85	57	52	58

## CAASPP Math English Learner



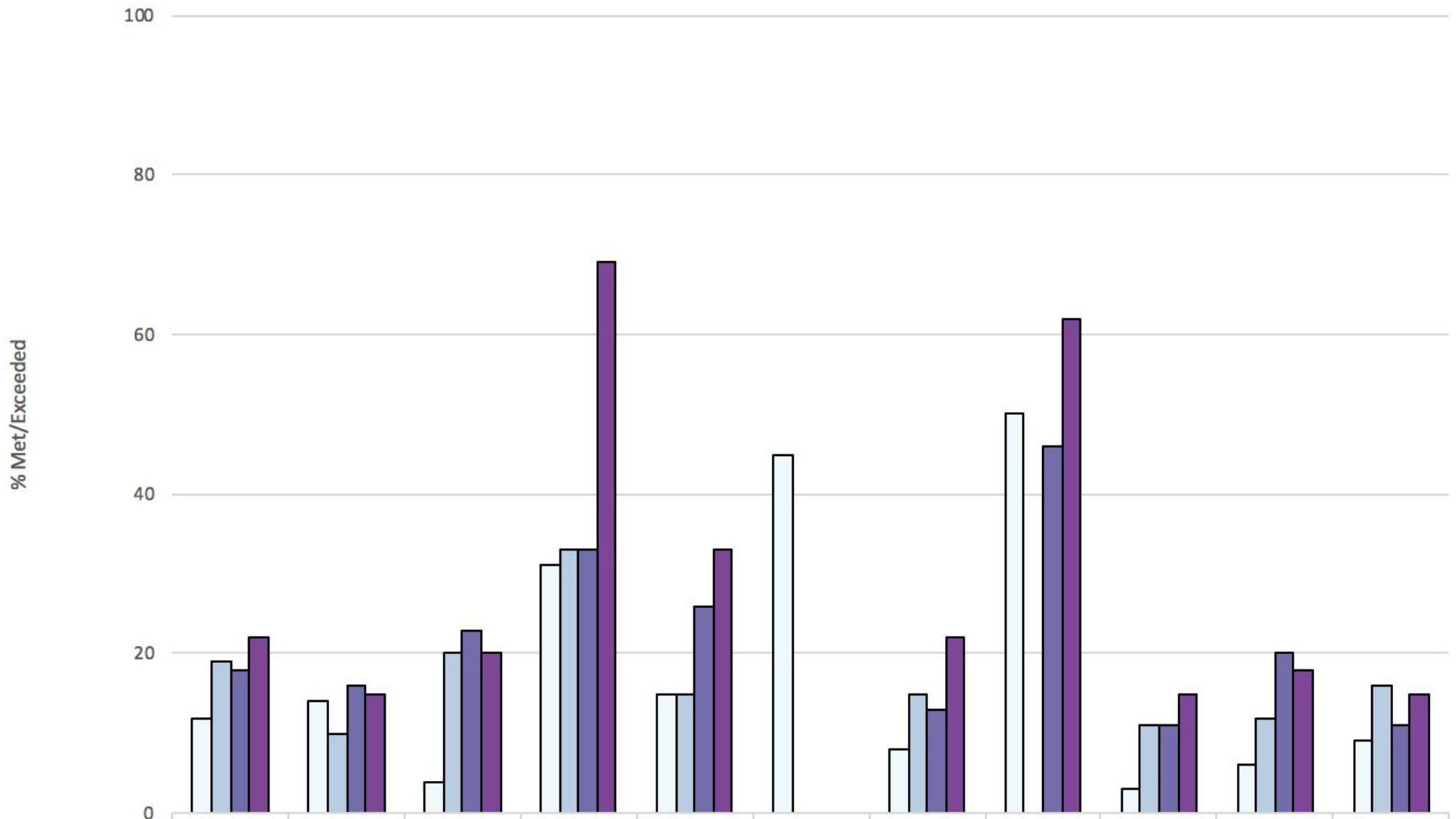
	MVWSD	Bubb	Castro	Huff	Landels	Mistral	Monta Loma	Stevenson	Theuerkauf	Crittenden	Graham
2015 EL Math	17	33	7	57	27	15	13	28	8	9	6
2016 EL Math	18	32	16	51	16	22	15	35	10	11	13
2017 EL Math	17	34	23	57	15	27	12	27	9	5	15
2018 EL Math	23	43	22	53	25	42	21	n/a	21	14	11

## CAASPP Math Socio-Economically Disadvantaged



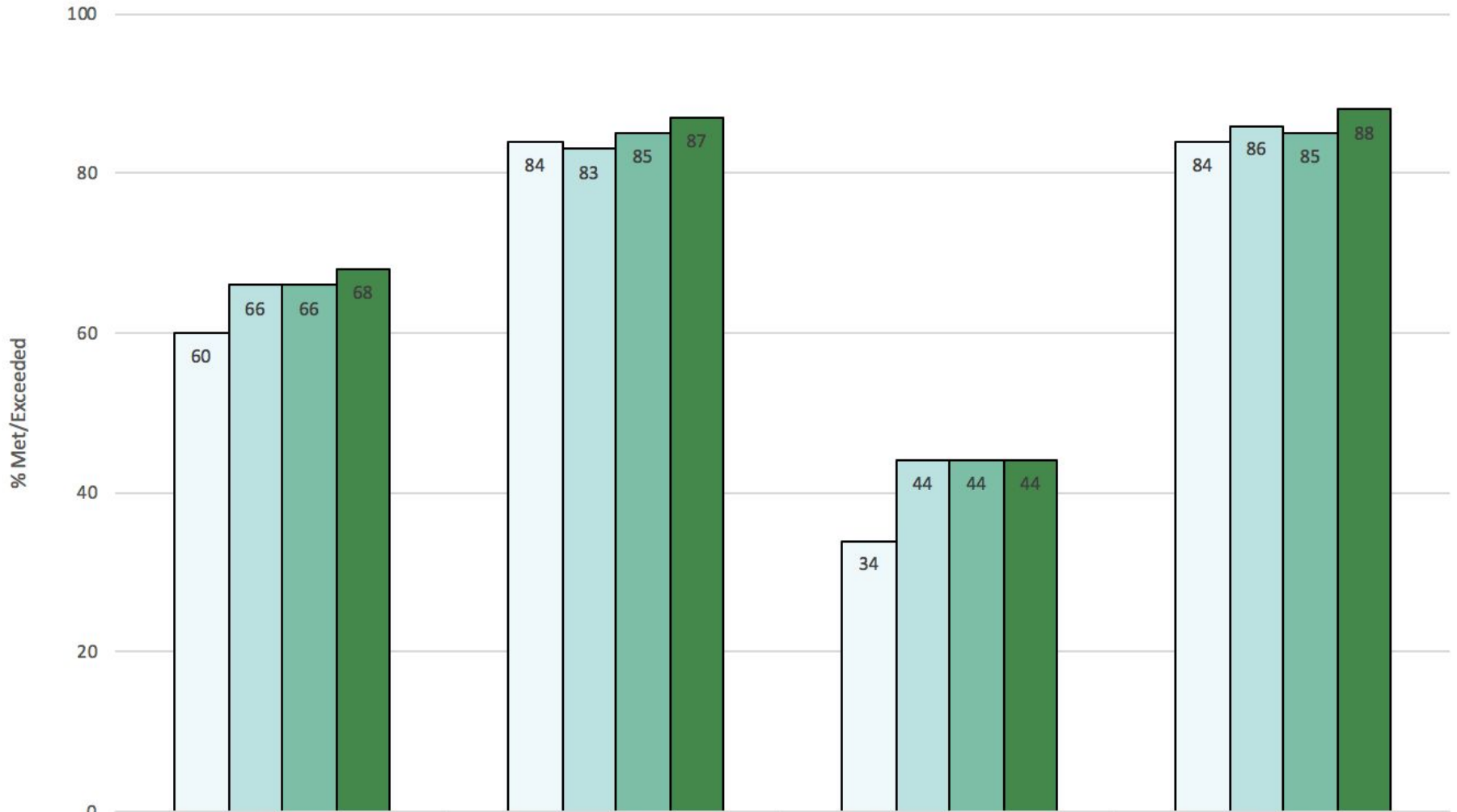
	MVWSD	Bubb	Castro	Huff	Landels	Mistral	Monta Loma	Stevenson	Theuerkauf	Crittenden	Graham
2015 SED Math	26	36	13	59	31	31	31	14	19	26	24
2016 SED Math	32	35	31	67	22	34	29	37	29	37	26
2017 SED Math	31	36	35	59	21	31	19	57	23	39	27
2018 SED Math	35	39	38	52	35	43	36	60	39	33	31

## CAASPP Math Students with Disabilities



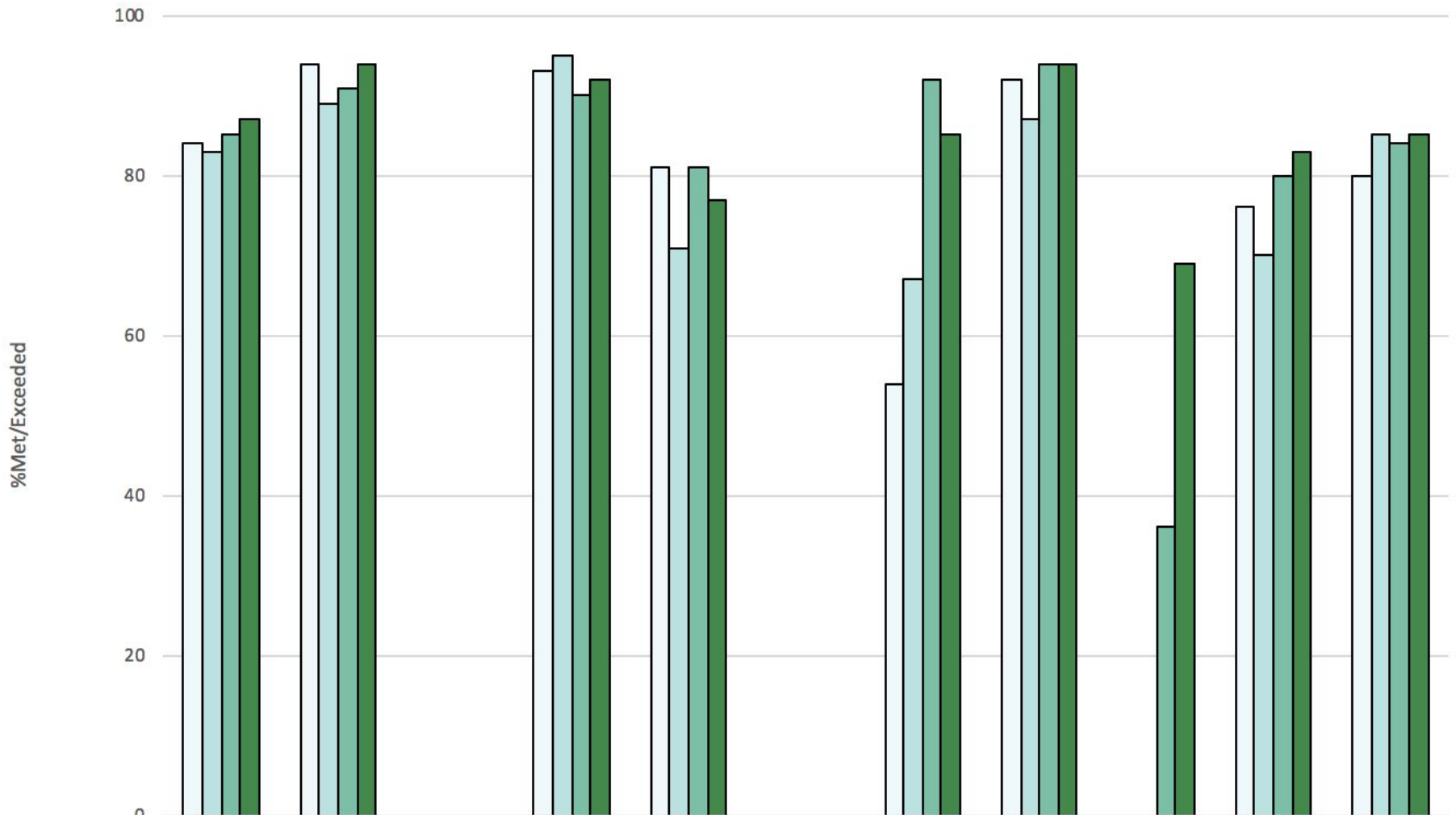
	MVWSD	Bubb	Castro	Huff	Landels	Mistral	Monta Loma	Stevenson	Theuerkauf	Crittenden	Graham
2015 SED Math	12	14	4	31	15	45	8	50	3	6	9
2016 SWD Math	19	10	20	33	15	n/a	15	n/a	11	12	16
2017 SWD Math	18	16	23	33	26	n/a	13	46	11	20	11
2018 SWD Math	22	15	20	69	33	n/a	22	62	15	18	15

## CAASPP ELA By Ethnicity



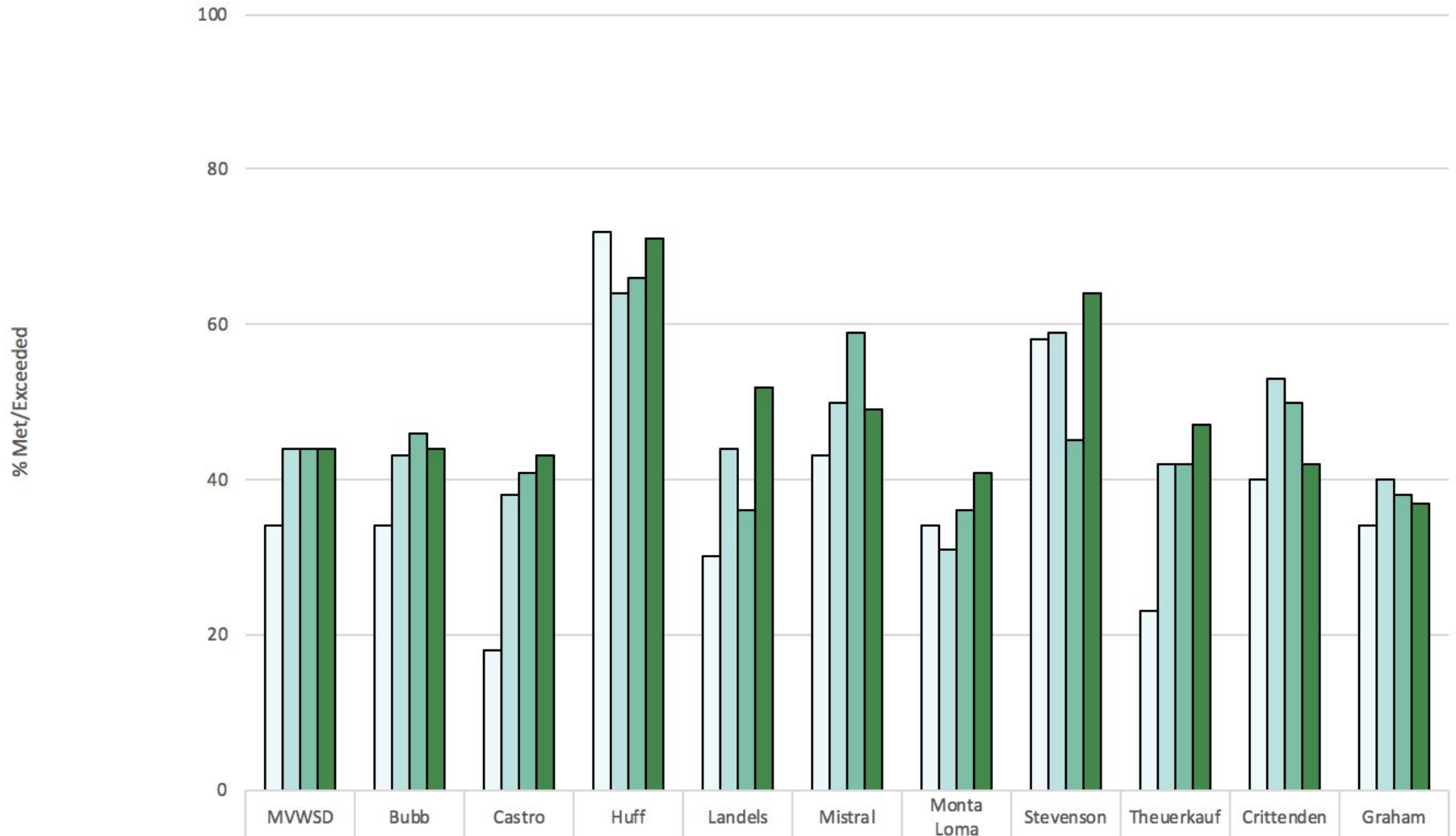
	MWUSD	Asian	Hispanic/Latino	White
2015 ELA	60	84	34	84
2016 ELA	66	83	44	86
2017 ELA	66	85	44	85
2018 ELA	68	87	44	88

## CAASPP ELA Asian



	MVWSD	Bubb	Castro	Huff	Landels	Mistral	Monta Loma	Stevenson	Theuerkauf	Crittenden	Graham
2015 Asian ELA	84	94	n/a	93	81	n/a	54	92	0	76	80
2016 Asian ELA	83	89	n/a	95	71	n/a	67	87	n/a	70	85
2017 Asian ELA	85	91	n/a	90	81	n/a	92	94	36	80	84
2018 Asian ELA	87	94	n/a	92	77	n/a	85	94	69	83	85

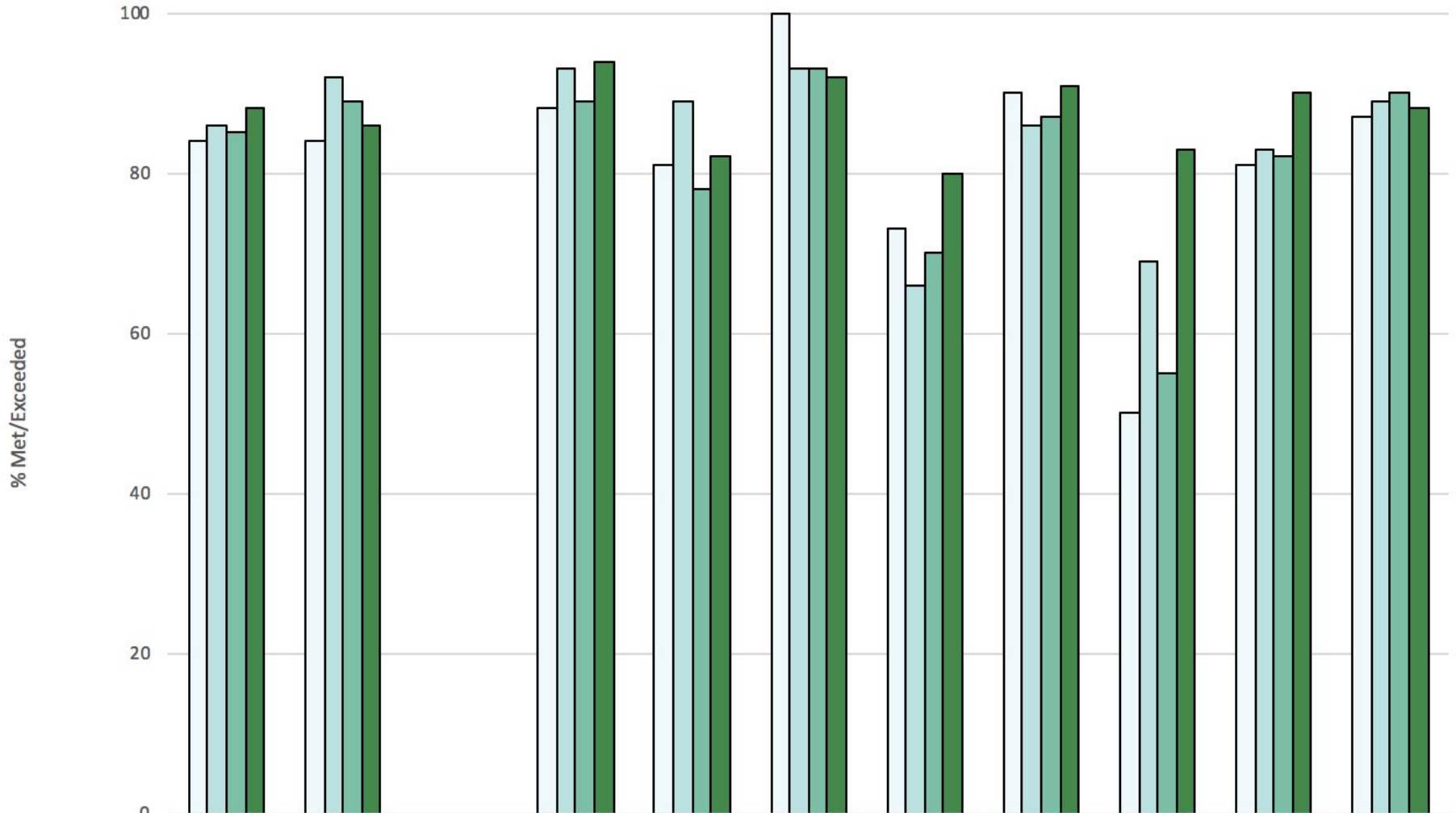
## CAASPP ELA Hispanic/Latino



2015 Hispanic/Latino ELA	34	34	18	72	30	43	34	58	23	40	34
2016 Hispanic/Latino ELA	44	43	38	64	44	50	31	59	42	53	40
2017 Hispanic/Latino ELA	44	46	41	66	36	59	36	45	42	50	38
2018 Hispanic/Latino ELA	44	44	43	71	52	49	41	64	47	42	37

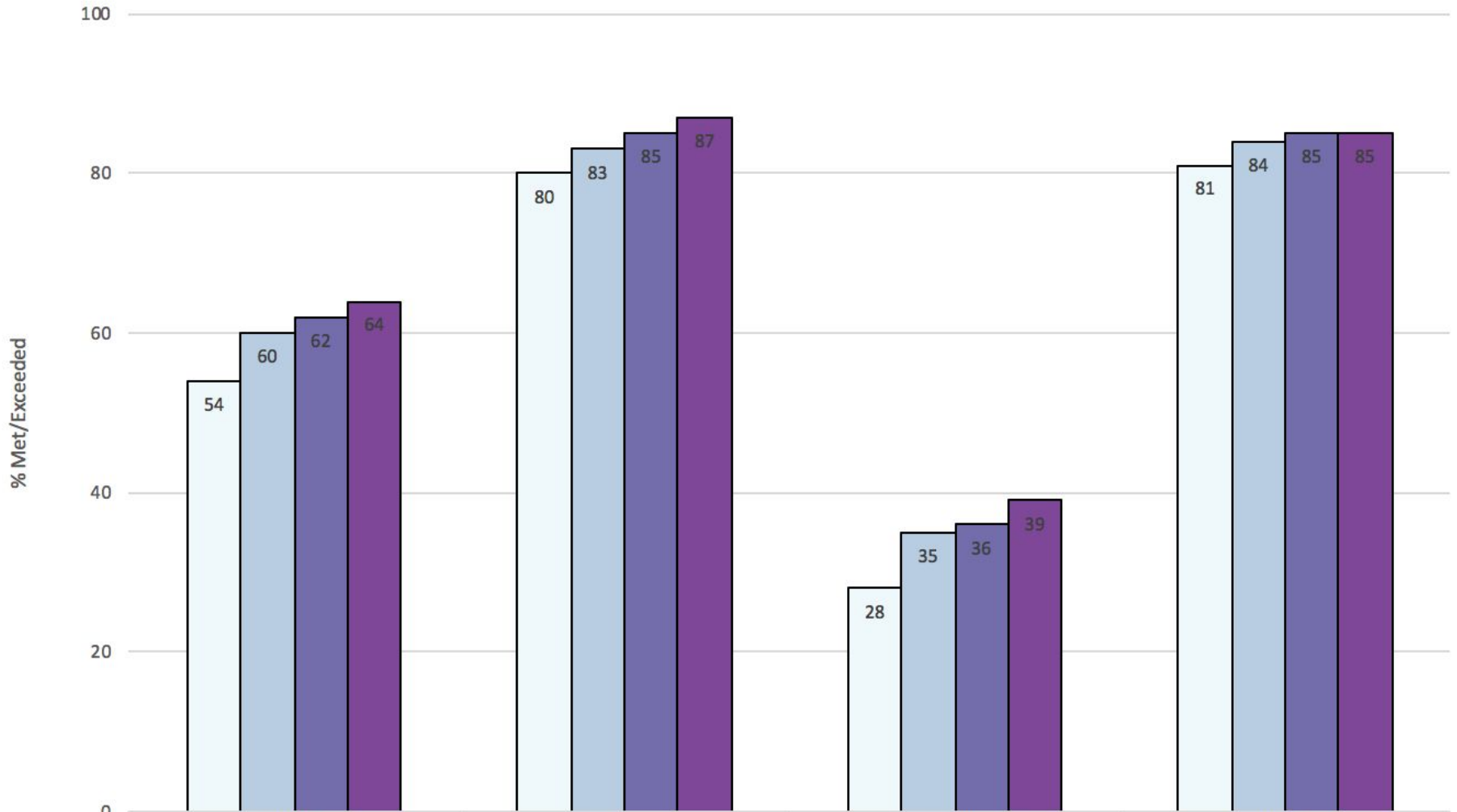


## CAASPP ELA White



	MVWSD	Bubb	Castro	Huff	Landels	Mistral	Monta Loma	Stevenson	Theuerkauf	Crittenden	Graham
2015 White ELA	84	84	n/a	88	81	100	73	90	50	81	87
2016 White ELA	86	92	n/a	93	89	93	66	86	69	83	89
2017 White ELA	85	89	n/a	89	78	93	70	87	55	82	90
2018 White ELA	88	86	n/a	94	82	92	80	91	83	90	88

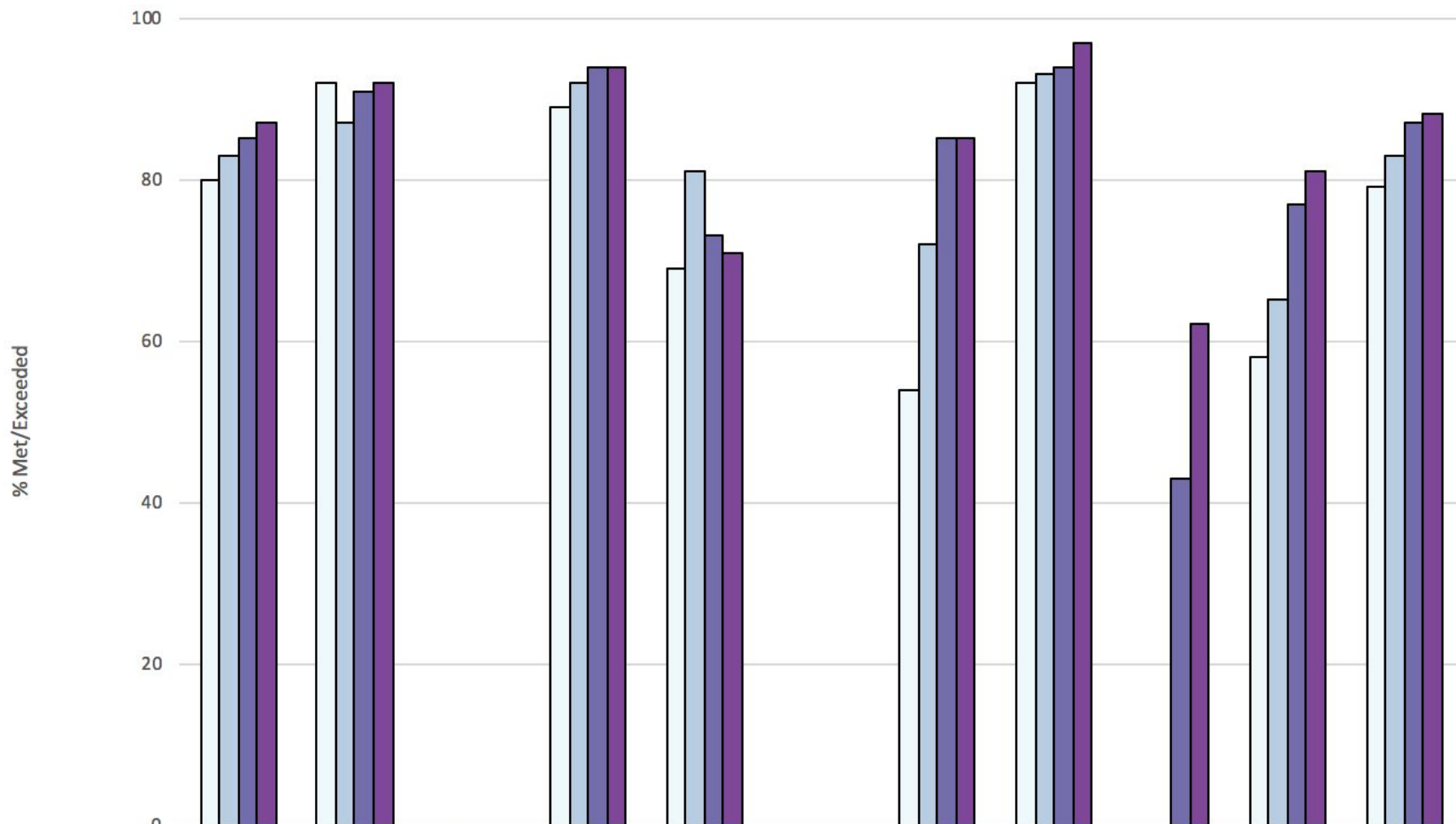
## CAASPP Math By Ethnicity



■ 2015 Math  
■ 2016 Math  
■ 2017 Math  
■ 2018 Math

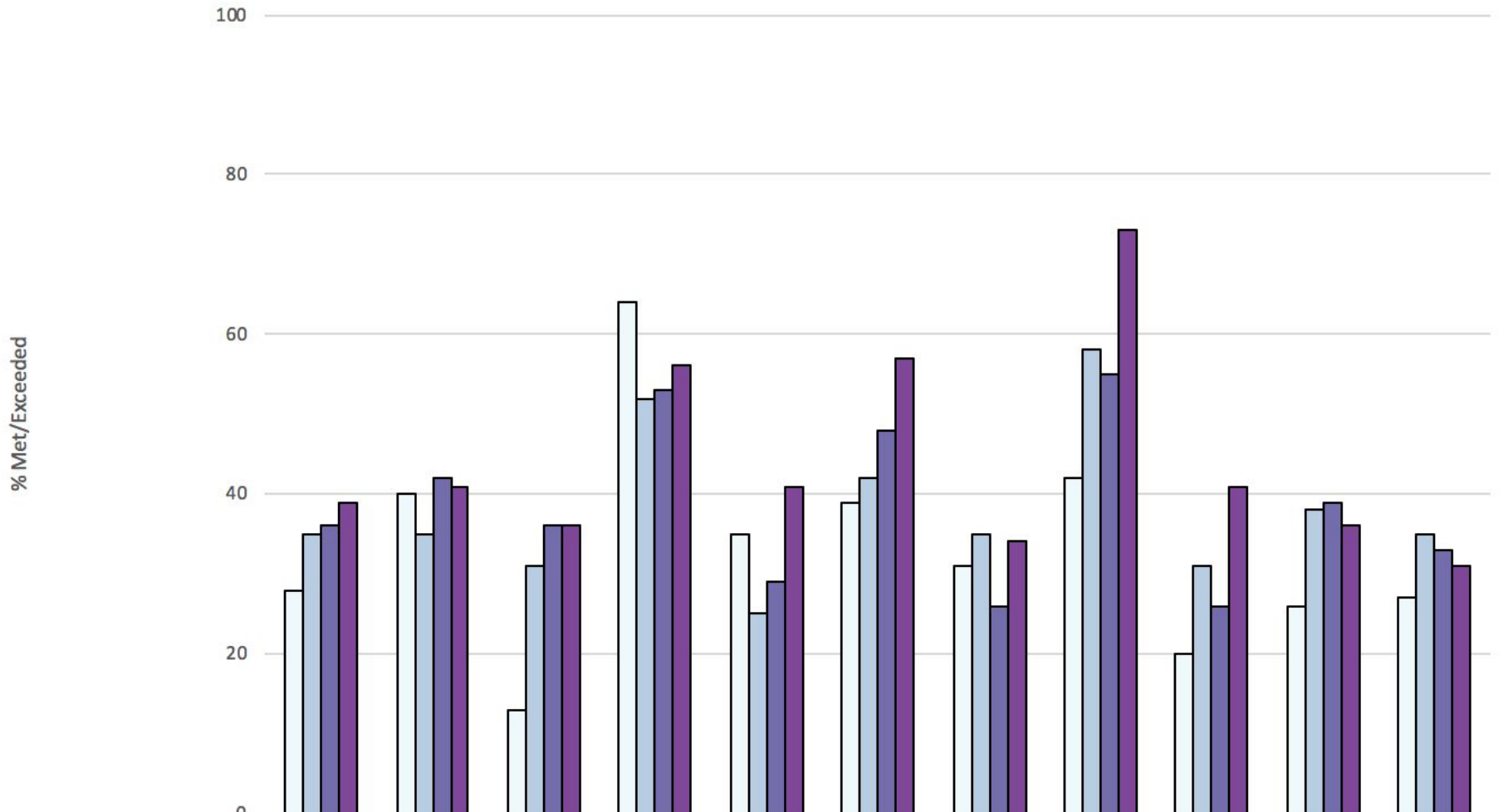
	MVWSD	Asian	Hispanic/Latino	White
2015 Math	54	80	28	81
2016 Math	60	83	35	84
2017 Math	62	85	36	85
2018 Math	64	87	39	85

## CAASPP Math Asian



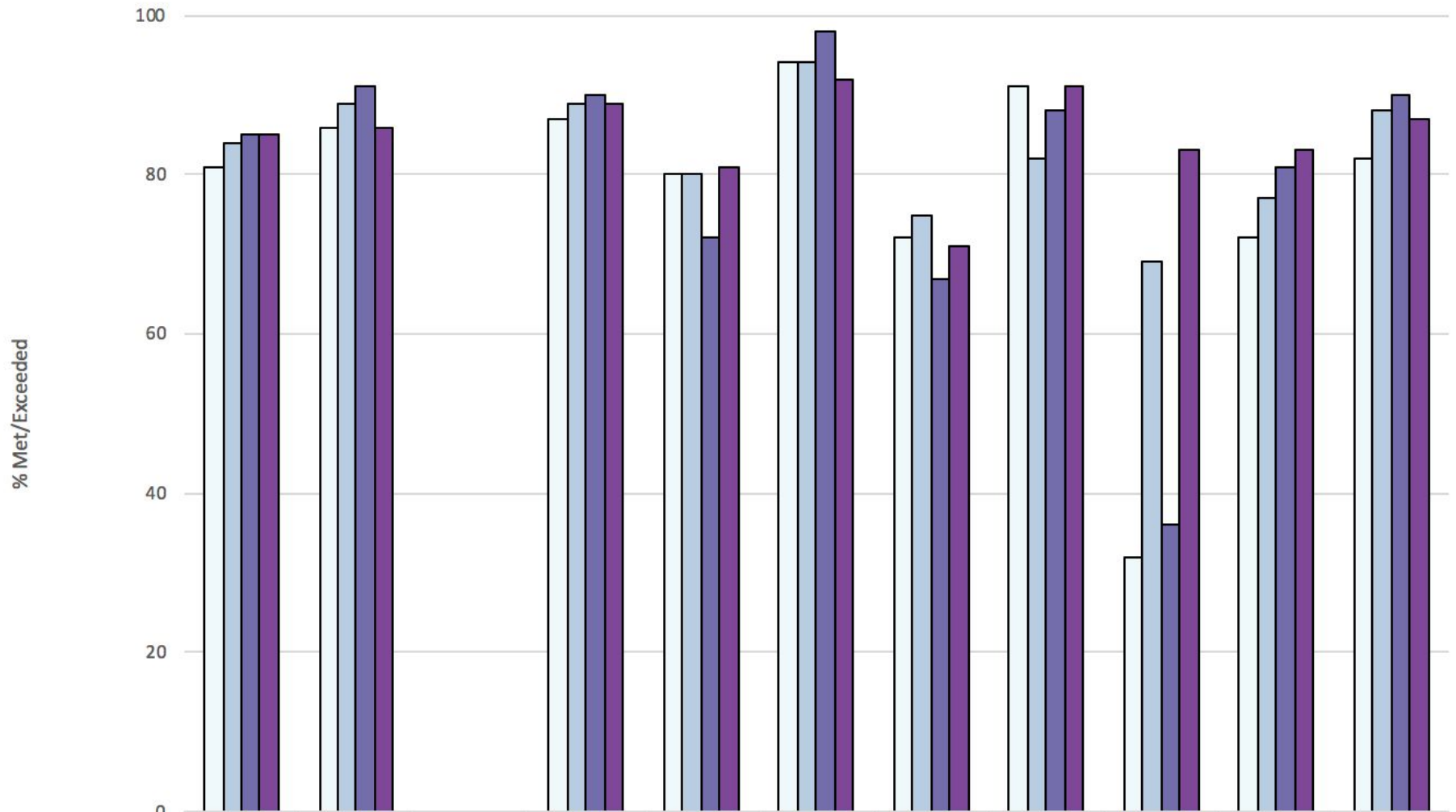
	MVWSD	Bubb	Castro	Huff	Landels	Mistral	Monta Loma	Stevenson	Theuerkauf	Crittenden	Graham
2015 Asian Math	80	92	n/a	89	69	n/a	54	92	0	58	79
2016 Asian Math	83	87	n/a	92	81	n/a	72	93	n/a	65	83
2017 Asian Math	85	91	n/a	94	73	n/a	85	94	43	77	87
2018 Asian Math	87	92	n/a	94	71	n/a	85	97	62	81	88

## CAASPP Math Hispanic/Latino



	MVWSD	Bubb	Castro	Huff	Landels	Mistral	Monta Loma	Stevenson	Theuerkauf	Crittenden	Graham
2015 Hispanic/Latino Math	28	40	13	64	35	39	31	42	20	26	27
2016 Hispanic/Latino Math	35	35	31	52	25	42	35	58	31	38	35
2017 Hispanic/Latino Math	36	42	36	53	29	48	26	55	26	39	33
2018 Hispanic/Latino Math	39	41	36	56	41	57	34	73	41	36	31

## CAAASPP Math White



	MVWSD	Bubb	Castro	Huff	Landels	Mistral	Monta Loma	Stevenson	Theuerkauf	Crittenden	Graham
2015 White Math	81	86	n/a	87	80	94	72	91	32	72	82
2016 White Math	84	89	n/a	89	80	94	75	82	69	77	88
2017 White Math	85	91	n/a	90	72	98	67	88	36	81	90
2018 White Math	85	86	n/a	89	81	92	71	91	83	83	87



Mountain View  
Whisman  
School District

# Trends

# English Language Arts - District Trends

- Outperformed county in all areas except English Language Learners - ELLs were even with the county this year
  - Higher growth across 4 years than the county with all groups
- Increased to 68% of students meeting and exceeding standards
  - 2 percentage point growth over 2016-17
  - 8 percentage point gain over 4 years
- Two neighboring districts maintained the level of proficiency from 2016-17. One decreased. MVWSD and Sunnyvale increased by 2 percentage points
  - MVWSD had higher increases over 4 years than any neighboring district

# English Language Arts - District Trends

- Elementary - gains from last year (4 to 5 percentage points for each grade)
  - Double digit gains: Theuerkauf (13) Monta Loma (12) Landels (10)
  - Smaller gains: Castro (2) Huff (2) Stevenson (5)
  - Losses: Bubb (-1) Mistral (-8)
- Growth over 4 years (2 to 28 percentage points)
  - Castro (28) and Theuerkauf (26)
  - Monta Loma (14) Landels (12) Stevenson (7)
  - Bubb (5) Huff (2) Mistral (2)
- Increase for English Learners (District wide 4 percentage point gain)
  - Gains at all sites except Bubb (-1) and Monta Loma (-5)
- Decrease for RFEPs (District wide 3 percentage point loss this year)
  - Gains at Castro, Landels, Monta Loma, Theuerkauf
  - Losses at Bubb, Huff, Mistral
  - Increase of 1 percentage point over the 4 years of SBAC



# English Language Arts - District Trends

- Middle school had an overall decrease (1 to -5 percentage points per grade)
  - Crittenden -3
  - Graham +1
- Growth over 4 years
  - Crittenden +5
  - Graham +4
- Increase for English Learners (District wide 4 percentage point gain)
  - Gain of 4 percentage points for Crittenden
  - Loss of 1 percentage points for Graham
- Decrease for RFEPs (District wide 3 percentage point loss)
  - Losses at Crittenden (-11) and Graham (-1)

# English Language Arts - District Trends

- SocioEconomically Disadvantaged
  - Flat since last year
  - Gain of 9 percentage points over 4 years
- Students with Disabilities
  - Increase of 2 percentage points since last year
  - Gain of 7 percentage points over 4 years
- Hispanic/Latino
  - Flat since last year
  - Gain of 10 percentage points over 4 years
- Elementary is growing while middle school remains flat

# Mathematics - District Trends

- Outperformed county in all areas
  - Higher growth across 4 years than the county with all groups
- Increased to 64% of students meeting and exceeding standards
  - 2 percentage point growth over 2016-17
  - 10 percentage point gain over 4 years
- MVWSD had higher increases than neighboring districts over 4 years
  - Neighboring districts: 0-3 percentage point gain
  - MVWSD 10 percentage point gain

# Mathematics - District Trends

- Elementary - gains from last year (3 to 7 percentage points for each grade)
  - Double digit gains: Theuerkauf (17) Landels (11)
  - Smaller gains: Monta Loma (7) Stevenson (6) Mistral (1)
  - Losses: Bubb (-1) Castro (-2) Huff (-1)
- Growth over 4 years (-4 to 23 percentage points)
  - Castro (23) and Theuerkauf (23)
  - Mistral (9) Monta Loma (6) Stevenson (6) Bubb (2) Huff (1)
  - Loss: Landels (-4)
- Increase for English Learners (District wide 6 percentage point gain)
  - Gains at all sites except Castro (-1)
- Decrease for RFEPs (District wide 2 percentage point loss this year)
  - Gains at Landels, Mistral, Stevenson, Theuerkauf
  - Losses at Bubb, Castro, Huff, Monta Loma
  - Increase of 5 percentage point over the 4 years of SBAC

# Mathematics - District Trends

- Middle school had an overall increase (-5 to 1 percentage point per grade)
  - Crittenden +1
  - Graham +1
- Growth over 4 years
  - Crittenden +15
  - Graham +8
- Increase for English Learners (District wide 4 percentage point gain)
  - Gain of 9 percentage points for Crittenden
  - Loss of 4 percentage points for Graham
- Decrease for RFEPs (District wide 3 percentage point loss)
  - Losses at Crittenden (-6) and Graham (-1)

# Mathematics - District Trends

- SocioEconomically Disadvantaged
  - Increase of 4 percentage points since last year
  - Gain of 9 percentage points over 4 years
- Students with Disabilities
  - Increase of 4 percentage points since last year
  - Gain of 10 percentage points over 4 years
- Hispanic/Latino
  - Increase of 3 percentage points since last year
  - Gain of 11 percentage points over 4 years
- Scores in grade 3 are the highest and trend down each grade from there



Mountain View  
Whisman  
School District

# Next Steps

# Next Steps

- Data analysis and site plans
  - RFEP goal added to monitor the progress of students
- Curriculum, pacing guides, and assessments
  - New middle school ELA pacing guide
- Coaching
  - New elementary math coach
- Response to Intervention
  - Addition of RTI classes in Math and ELA in middle school
- Professional Learning Communities
- Professional Development
  - Sheltered Instruction Observation Protocol
  - Summer Optional Professional Development
  - Optional Professional Development for teachers throughout the year
  - Professional Development for administrators





Mountain View  
Whisman  
School District

# Questions?